

# MERCURY METEOR 1975.





# MERCURY METEOR 1975.

## Solid reasons make it a solid, sensible buy.

There are many solid sensible reasons for choosing a Mercury Meteor. It is a full-sized car with many luxury and value features, but it is also a car with an affordable price.

You won't find the 1975 Mercury Meteor lacking in any way. It is impressively styled and spaciouly comfortable. It is extremely smooth riding and quiet. It has travelling room for six people and loads of luggage space. And most importantly, Meteor has good operating economy engineered right in.

Meteor also offers you the choice of six beautiful models. Montcalm and

Rideau 500 in 2-door hardtops, 4-door pillared hardtops and two spacious station wagons. They all add up to solid sensible value.

Meteor's looks are unmistakably Mercury. Its impressive styling is set off with a distinctive hood ornament that overlooks a freshly designed grille. The cleanly sculptured silhouette ends with handsome rear deck styling that includes new wrap around tail lamps, integral back up lights and side markers.

Looks however, are just one small reason for choosing a Mercury Meteor. A great many solid engineering features add to its value.

For a superbly smooth ride, Meteor's suspension is tuned to steel-belted radial ply tires. And those radials are standard equipment for 1975. They not only add to Meteor's smooth ride but they help you save on gas and deliver excellent tread life.

And all Meteors have solid state ignition that eliminates the points and condenser. It helps improve fuel economy over long periods due to more stable spark plug performance. This is what we mean when we say Meteor is engineered for good operating efficiency and economy. Solid engineering reasons make choosing a 1975 Mercury Meteor solid sense.

*Foreground—Montcalm 2-door hardtop.*

*Background—Montcalm 4-door pillared hardtop.*







*Optional illuminated visor-mounted vanity mirror.*

Look below at the interior of a Mercury Meteor. It may come as a surprise to you that this is a standard interior. The picture tells you that it is beautiful, but you really have to experience this comfort to fully appreciate it.

Beneath the rich brocade cloth and vinyl upholstered seating, is deep foam padding. Full length arm rests with a

wide cushioned sill run along the padded front doors. The simulated wood grain applique with bright frame that highlights the doors and the instrument panel adds a further touch of luxury. The carpeting is thick 12 ounce cut-pile, 100% nylon. It is both long wearing and very comfortable.

The trim materials used in Mercury Meteor are chosen for durability, easy care and long life, just as they are chosen for their attractive appearance.

As well as experiencing comfort in a Meteor interior, you and your passengers will experience the peace of quiet. Many pounds of sound deadening materials are placed strategically throughout Meteor's body for a truly enjoyable ride. Quiet and comfort are two more reasons that make 1975 Mercury Meteor a solid sensible buy.



*Meteor instrument panel (air conditioning and radio are optional).*

*Montcalm standard cloth and vinyl interior.*



*Optional AM/FM multiplex stereo radio with stereo tape.*

Yet another reason is Meteor's big car strength. It starts with a separate body/frame construction. The body is welded together to form a rigid unit and is mounted to a strong 5 cross-member perimeter frame. Extra protection comes from a steel guard rail in each of the doors and a double panelled roof. Add these to the long list of Safety Design features and you have the reasons why many people choose a Mercury Meteor.

Mercury Meteor also comes with a long list of standard equipment that includes: a 351 V8 engine; Select-Shift automatic transmission; power steering; power front disc brakes; solid state ignition; upper level power ventilation; inside hood release; steel-belted radial ply tires; and more.

Finally another solid reason for choosing a Mercury Meteor is the wide range of options offered. These appearance, convenience and functional options can both personalize your Meteor and add to its value at resale time. Your Mercury dealer will be happy to help

*Optional Digital Clock.*



you select the choice of options that best suit your needs. A number of the more popular options are illustrated and described throughout this brochure.

If you are looking for a full-sized car or wagon that is impressively styled, comfortable and smooth riding with luxury car features at an affordable price . . . then you are looking for the 1975 Mercury Meteor.

Many solid reasons make it a solid sensible buy.

*Certain items illustrated are optional at additional cost.*



# METEOR MONTCALM.

A smooth, quiet, relaxing ride.

The first impression you'll have of the 1975 Meteor Montcalm is a striking one. The styling tells you that this is our most luxurious Meteor. It's every inch a full-sized Mercury in the tradition of Marquis and Lincoln Continental.

Right along with this great styling comes a beautifully smooth, quiet ride. And, as with every Mercury, the ride is a matter of engineering. Computer selected springs, a radial tuned suspension, steel-belted radial ply tires, many pounds of strategically placed sound insulation together with a 124 inch wheel base make Montcalm the smoothest and quietest riding Meteor ever. It's a ride you and your passengers will truly enjoy.

And Meteor Montcalm will carry as many as six adults in really plush comfort. They'll relax in richly textured seats of soft Summit cloth with vinyl trim. And as well as being beautiful

these seats are also deeply padded for comfort.

An upper level power ventilation system keeps fresh air flowing through the car, even with the windows closed (whether the car is in motion or not).

Montcalm's standard equipment includes: a 351 cubic inch V8; 3-speed Select-Shift automatic transmission; power steering; power front disc brakes; steel-belted radial ply tires; solid state ignition; long wearing cut-pile nylon carpeting; 3 point restraint system; rocker panel mouldings; front bumper guards; washer jets mounted on the windshield arms so the fluid goes where it's most needed, and more.

To give your 1975 Montcalm a more distinctive and "personally yours" look, there is a wide array of options to choose from like: fender skirts; glamour metallic paint; vinyl roof; luxury wheel covers;



*Optional fingertip speed control with new 2-spoke rim blow steering wheel.*



*Optional AM/FM multiplex stereo radio.*

body-side mouldings with vinyl insert; and more.

Whichever way you decide to take your 1975 Montcalm 2-door, 4-door or wagon, with or without options, you'll find it certainly is a car that's built for today's values. Many solid reasons make it a solid buy.





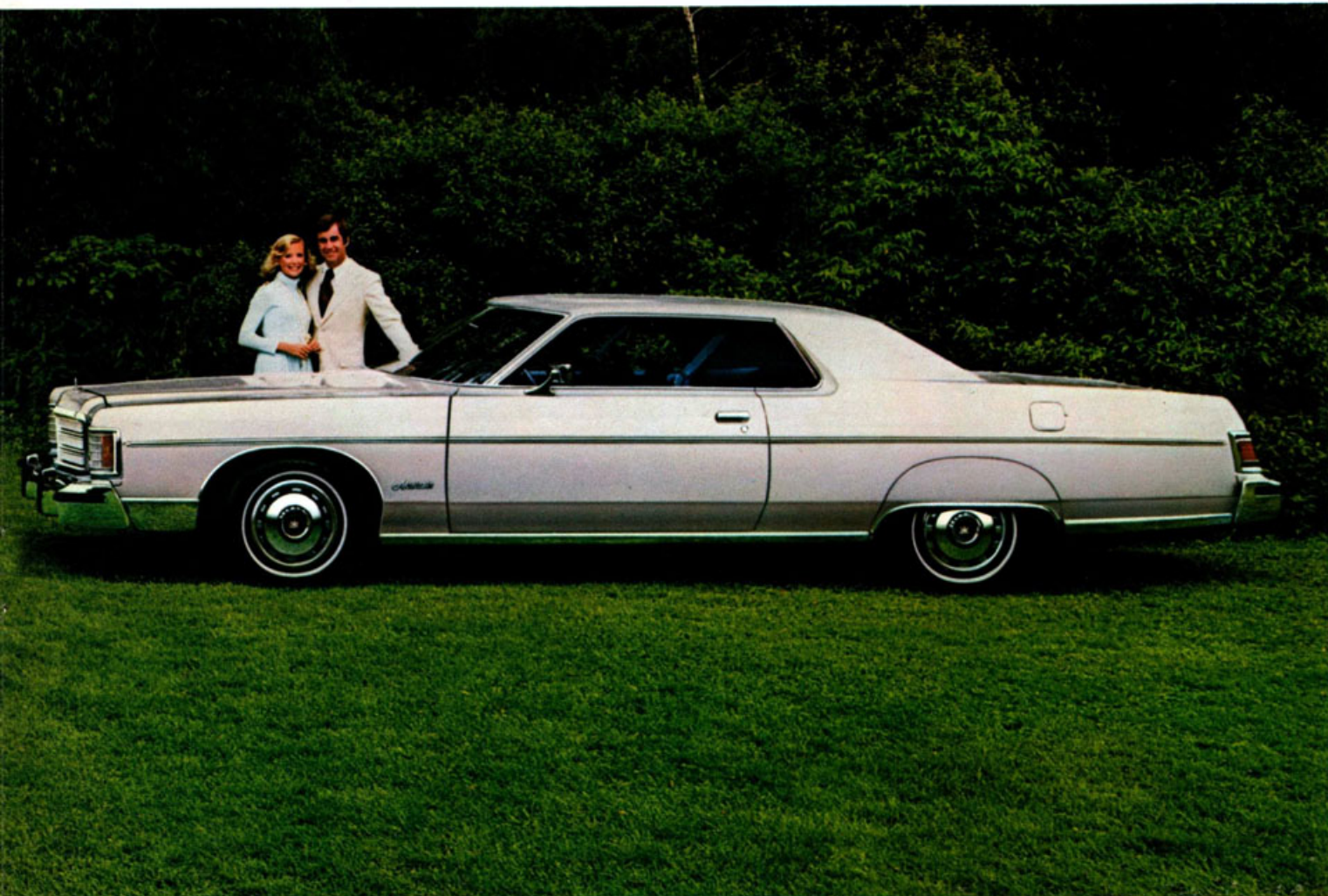


*Above: Montcalm optional all-vinyl interior (standard on Montcalm station wagon)*

*Left: Montcalm standard cloth and vinyl interior.*

*Below Left: Montcalm 4-door pillared hardtop. Right: Montcalm 2-door hardtop.*

*Certain items illustrated are optional at additional cost.*





# METEOR RIDEAU 500

## Value throughout every inch.

Look closely, because we really mean what we say. Value really is engineered throughout every inch of the Mercury Meteor Rideau 500.

Value starts with room. And in Rideau 500 there's plenty of it, with comfort for six full-sized adults. Our 4-door hardtop offers 39.7 inches of leg room for back seat passengers and 41.6 inches for front seat passengers. That's stretch out comfort. In the trunk there's a big 22.7 cubic feet of luggage space.

And with all this room comes plenty of comfort. You'll find the seats are deeply foam padded and tailored in hard wearing yet soft Barletta cloth and vinyl trim. Deep colour keyed cut-pile nylon carpeting adds to the comfortable feeling Rideau 500 gives you.

And along with this comfort comes smooth riding quiet. The kind you can only get from a big car like the Meteor Rideau 500. It starts with a long 124 inch wheelbase, a radial tuned suspension

and steel-belted radial ply tires that are now standard for 1975. It finishes with many pounds of sound absorbing materials placed strategically around the passenger compartment to absorb road

*Rideau 500 standard cloth and vinyl interior.*



*Optional electric clock.*

noise and vibration. Rideau 500 is as smooth as it is quiet. That's the kind of thing we mean by value.

But we also mean a long list of standard equipment. 351 cubic inch V8; Select-Shift automatic transmission; power steering; power front disc brakes; steel belted radial ply tires; solid state ignition; automatic parking brake release; left hand remote control mirror; automatic seat back release (2-doors); front bumper guards; glove compartment light, and more.

To make your Meteor Rideau 500 even more luxurious and more personally yours, you can add a number of appearance, convenience and functional options. Like tinted glass; digital clock; right-hand remote mirror; visibility light group; fingertip speed control, and more. Your Mercury dealer will be happy to help you make a final selection. Solid reasons make choosing Rideau 500 solid sense.

*Foreground: Rideau 500 2-door hardtop.*

*Background: Rideau 500 4-door pillared hardtop.*





# METEOR STATION WAGONS

## A lot of wagon and a lot of space.

Pay load or play load, Meteor wagons get the job done in great style. And if you want to know one of the most important things about these wagons . . . it is that they combine all of the important features of the Meteor cars and add few of their own. They're impressive, they're smooth riding, quiet and comfortable and they're spacious. And of course they're Mercurys.

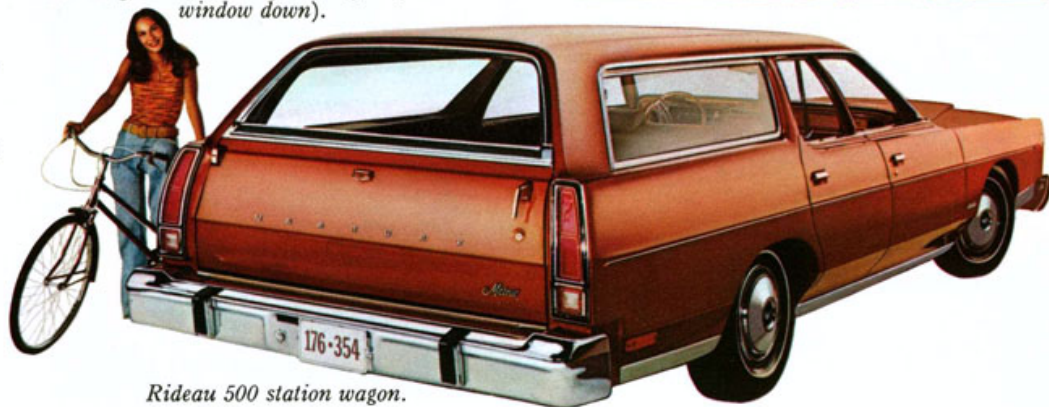
There are two Meteor wagons to choose from, the well appointed Montcalm and the value packed Rideau 500. Both have large easy to load cargo areas. And they both have the better ideas that have kept Ford the Wagonmaster for so many years.

Look at the huge cargo area. It's a cavernous 94.6 cubic feet. The standard floor area is large enough to take a 4' x 8' panel lying flat. But there is still more to come, under the load floor there's another 9.1 cubic feet of cargo space that can be locked so you can keep

valuables safe. And when you order the optional carpeted load floor, you get another 1.2 cubic feet of lockable space behind the left wheel housing.

Mercury wagons. Solid reasons make them solid sensible buys.

*3-way doorgate: swings open wide (with window up or down) for people and luggage. For long loads, it swings down flat (with window down).*



*Rideau 500 station wagon.*

*Montcalm station wagon.*

*Certain items illustrated are optional at additional cost.*





# MERCURY METEOR MAJOR SPECIFICATIONS

## Power team combinations

Availabilities:	351-2V V8	400-2V V8	460-4V V8
Rideau 500	Std.	Opt.	Opt.
Montcalm	Std.	Opt.	Opt.
Station Wagons	N.A.	Std.	Opt.

TRANSMISSION: Select-Shift Automatic standard on all models.

BRAKES: Dual hydraulic system with warning light. Power brakes (disc front, drum rear) standard on all models.

STEERING: Power steering standard on all models.

## Exterior Dimensions: (Inches)

Model	Length	Width	Height	Wheelbase	Tread		Luggage Capacity (cu.ft.)
					Front	Rear	
4-Door Pillared H.T.	229.0	79.6	54.3	124.0	64.1	64.3	20.5
2-Door Hardtop	229.0	79.6	53.3	124.0	64.1	64.3	20.5
Station Wagon	227.0	79.8	56.4	121.0	64.1	64.3	94.6*

\*Additional storage under floor: 9.1 cu. ft. on 6-passenger wagons, and 5.4 cu. ft. on dual-facing rear seat wagons

## Interior Dimensions:

Model	Front Compartment			
	Head Room	Leg Room	Shoulder Room	Hip Room
4-Door Pillared H.T.	37.8"	41.6"	61.5"	61.6"
2-Door Hardtop	37.3"	41.6"	61.5"	61.6"
Station Wagon	38.7"	41.6"	61.5"	61.6"

Model	Rear Compartment			
	Head Room	Leg Room	Shoulder Room	Hip Room
4-Door Pillared H.T.	36.9"	39.7"	61.4"	61.7"
2-Door Hardtop	36.3"	35.5"	60.6"	60.8"
Station Wagon	39.1"	37.0"	61.4"	61.7"

## Ford Motor Company Safety Design Features

- Dual Hydraulic Brake System with warning light
- Glare-reduced instrument panel padding, windshield wiper arms, steering wheel hub, and windshield pillars
- Energy-absorbing steering wheel and column
- Energy-absorbing armrests and safety-designed door handles
- Integral lap and shoulder belts with individual lap and shoulder belt retractors for front outboard occupants
- Lap belts with mini buckles for center front and all rear seating positions with retractors for rear outboard occupants
- Positive reminder warning light and buzzer for all front seat occupants
- Turn indicators with lane-changing signal feature
- Energy-absorbing instrument panel with padding for center and right passengers
- Padded sun visors
- Locking steering column with warning buzzer
- Two speed or variable speed windshield wipers
- Windshield washers with wiper mounted spray jets
- Impact absorbing laminated safety glass windshield
- Double-yoke safety door latches and safety hinges
- Hazard warning flasher
- Steel guard rails in side doors
- Backup lights
- Side marker lights
- Energy-absorbing front seat back tops with padding
- Self-locking front seat backs on 2-door vehicles
- Safety-designed coat hooks
- Safety-designed radio control knobs and push buttons (on all cars equipped with radios)
- Remote controlled outside rearview mirror, driver's side
- Safety rim wheels and load-rated tires
- Corrosion-resistant brake lines
- Uniform automatic transmission shift quadrant
- Parking lamps coupled with headlamps
- Non-reversing odometer
- Safety-designed front end structure
- Energy-absorbing front and rear bumpers
- Head restraints for front outboard occupants
- Safety glove box latch
- Inside yieldaway day/night mirror
- Front bumper guards
- Self adjusting brakes
- Inside hood latch release
- Anti-theft key system with one key for doors and ignition only, other key for glove compartment and trunk
- Visible vehicle identification
- Spare tire lock
- Safety designed roof structure

Illustrations and information presented were correct when approved for printing. Ford Motor Company of Canada, Limited reserves the right to discontinue or change at any time, specifications or design without incurring obligations.

Some features shown or described are optional at extra cost. Most options are offered on all models. Some options are required in combination with other options. Availability of some models and features described may be subject to a slight delay. Always consult your Mercury Dealer for the latest, most complete information on models, features, prices and availability.

MERCURY METEOR



Litho in Canada 8/74