

*MORE THAN EVER - MILES AHEAD*

**'53 Meteor.**



## SPECIFICATIONS

# '53 Meteor.

### CUSTOMLINE AND CRESTLINE ENGINES

**RATING:** The '53 Customline and Crestline Meteor L-head, 90° V-8 engine develops 120 maximum brake horsepower at 3600 r.p.m. Taxable horsepower 32.5. Piston displacement 255 cubic inches; bore/stroke 3.187" x 4.0". Compression ratio 6.8 to 1. Three point variable resilience engine mounting system. High-grade iron block and heads with redesigned high-compression combustion chambers; Controlled-Quality bore surface finish. Special cast alloy steel counterbalanced crankshaft; 3 selectively-fitted, precision-type main bearings; precision-type copper-lead connecting rod lower bearings. Tin-plated, spherical-head, Super-Fitted aluminum alloy pistons, 4 rings, phosphate coated. Precision-set free turning valves for smoother quieter engine operation and longer life: high chrome nickel alloy exhaust valves; high-grade steel intake valves. High-lift, quiet-contoured, special cast alloy iron camshaft with fibre timing gear.

**LUBRICATION:** Full-pressure lubrication to all main, connecting rod and camshaft bearings. Heavy-duty, by-pass type oil filter (optional at extra cost) with replaceable element. Internally-mounted, helical-gear type oil pump. Directed-flow crankcase ventilation. Oil capacity, 9 Imp. pts. with filter.

**COOLING SYSTEM:** Full-flow cooling system, with full-length water jackets; 2 high-velocity, centrifugal-type water pumps, permanently-lubricated double-row ball bearings. Balanced Butterfly-type thermostats for quick warm-up. Cushion-mounted radiator core; pressure-type radiator cap. Silent-Spin fan. Coolant capacity, 19 Imp. qts.

**FUEL SYSTEM:** Dual-downdraft, concentric-bowl carburetor of simplified design, mounted inside oil bath air cleaner. Automatic idling control. Improved "Loadomatic" Economy. Automatic choke with manifold-mounted heat control. Deep-Breath intake manifold; internally-mounted exhaust heat valve. Special fuel and vacuum pump unit, optional at extra cost, is factory installed on all cars equipped with Overdrive or Automatic. Double-sheet reverse-flow muffler. Oil bath air cleaner. Fuel tank capacity 14.5 Imp. gals.

**ELECTRICAL SYSTEM:** Water-proofed ignition with neoprene coverings for spark plugs and hi-tension wirings. Low cut-in generator; high-torque starting motor, inertia type drive with Standard and Overdrive transmissions, Bendix follow through type with Automatic Transmission. High-speed, single breaker-arm distributor with full-pressure type automatic spark control. 17-plate, 100 ampere-hour battery; 3-unit regulator. Narrow V-belts for driving engine accessories.

### MAINLINE ENGINE

**RATING:** The '53 Mainline Meteor L-head, 90° engine develops 110 maximum brake horsepower at 3800 r.p.m. Piston displacement, 239.4 cubic inches; bore/stroke 3.187" x 3.75". Compression ratio 7.2 to 1. High chrome nickel alloy exhaust valves; high-grade steel intake valves.

**FUEL SYSTEM:** Full-Flo fuel pump\* (optional at extra cost) with laminated-type filter. Manual choke.

\*Std. with Touch-O-Matic Overdrive or Merc-O-Matic Drive.

**ELECTRICAL SYSTEM:** 4-position ignition-starter switch.  
(Other specifications identical to Customline and Crestline engine.)

### CHASSIS

**FRAME:** Double-drop design; 5 cross members welded to heavy box-section side rails; K-bar construction. Special X-member construction used on Crestline Victoria and Convertible—and Mainline Ranch Wagon.

**CLUTCH:** Semi-centrifugal, dry, single plate type (with Standard and Overdrive transmissions). Outside diameter, 9.5 ins. Total friction area, 85.2 ins. Oil impregnated, sintered bronze pilot bearings. Permanently lubricated, ball-type throwout bearing.

**REAR AXLE:** Semi-floating type; hypoid gears; Hotchkiss drive. Forged axle shafts with integral flanges; welded pressed steel, banjo-type housing with rear cover welded in place. Ratios—Standard transmission, 3.90 to 1 optional. Ratios—Overdrive, 4.10 to 1 std., 3.90 to 1 optional. Ratios—Automatic transmission; 3.31 to 1 std., 3.54 to 1 optional. Higher axle capacity used in Mainline Ranch Wagon has composite type housing, Ranch Wagon ratios—Standard Transmission, 4.09 to 1 std., 4.27 to 1 optional; Overdrive, 4.27 to 1 std.; Automatic transmission, 3.54 to 1 std.

**FRONT SUSPENSION:** Independent, swinging link type with tailored-to-model Hydra-Coil springs. Double-acting Viscous-Control shock absorbers. One-piece torsion rod, rubber-mounted stabilizer. Elliott-type steering knuckles. Opposed tapered roller wheel bearings.

**REAR SUSPENSION:** Variable-rate suspension; 7-leaf, semi-elliptic springs, longitudinal mounted; rubber bushings at shackles and brackets; impregnated inserts between tips of upper leaves; tension type shackles. Tubular, double acting, diagonally-mounted, Viscous-Control shock absorbers. Mainline Ranch Wagon has 9-leaf, semi-elliptic springs.

**SERVICE BRAKES:** Double-seal, self-energizing, 4-wheel duo-servo type hydraulic brakes. 10" diameter composite steel and cast iron drums; moulded linings. Pendant foot control. Effective braking area 173.52 sq. ins. Easier-action hand brake. Mainline Ranch Wagon has 159.1 sq. ins. effective braking area.

**STEERING SYSTEM Customline and Crestline:** Worm and roller type steering gear with equal length tie rods. This design reduces steering effort by as much as 25%. Gear ratio, 18.2 to 1. Over-all steering ratio 26.4 to 1. Steering wheel diameter 18 ins. Turning radius, centre of outer front wheel, 20 ft. (approx.). **Mainline:** Symmetrical linkage with spring-loaded ball-stud in steering cross link; 90° mounted worm and roller type gear with triple-tooth roller on needle bearing. Over-all steering ratio 26.3 to 1.

**WHEELS AND TIRES Customline and Crestline:** 6.70 x 15 4-ply tires on 5" rims standard; 7.10 x 15 4-ply tires on 5" rims on Crestline models with Automatic transmission. **Mainline:** 6.70 x 15 4-ply tires on 5" rims standard; 7.10 x 15 4-ply tires standard on Ranch Wagon.

**EXTERIOR DIMENSIONS:** 115" wheelbase; 58" front and 56" rear treads, over-all width 74.68"; over-all length 197.8"; over-all height (loaded) 62.3", (curb) 64.1".

**BODY COLOURS AND UPHOLSTERIES:** Eleven single-tone enamels and metallics, and twenty-four two-tone colour combinations. Tone-blended upholstery fabrics, vinyls and nylons.

These specifications were in effect at the time this catalogue was approved for printing. Ford Motor Company of Canada, Limited, Windsor, Ontario, whose policy is one of continuous improvement, reserve the right, however, to discontinue or change at any time, specifications, design, or prices without notice and without incurring any obligation to purchaser.



**MERCURY - LINCOLN - METEOR**  
**FORD MOTOR COMPANY OF CANADA, LIMITED**  
**WINDSOR, ONTARIO**





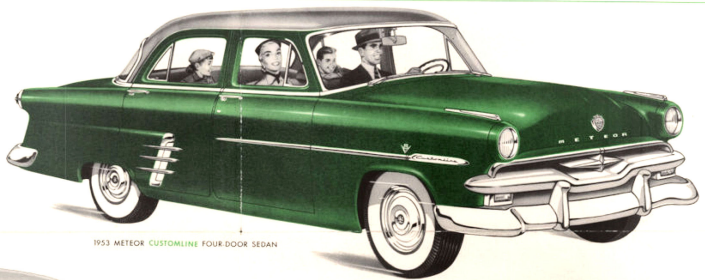
# '53 Meteor

HEADS THE LOW PRICE FIELD  
WITH 3 DISTINCTIVE SERIES

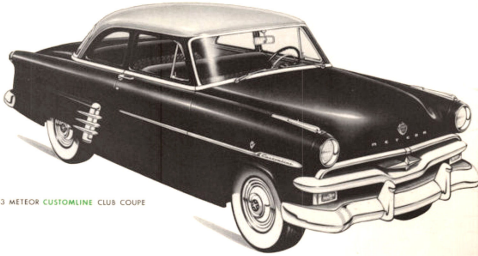
## CUSTOMLINE

120 H.P. V-8

NO OTHER CAR  
IN THE  
LOW PRICE FIELD  
OFFERS SO MUCH!



1953 METEOR CUSTOMLINE FOUR-DOOR SEDAN



1953 METEOR CUSTOMLINE CLUB COUPE

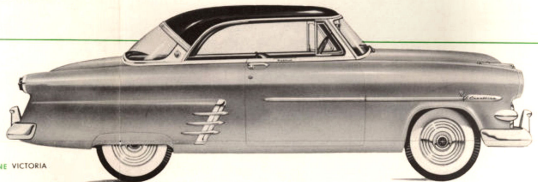


1953 METEOR CUSTOMLINE TWO-DOOR SEDAN

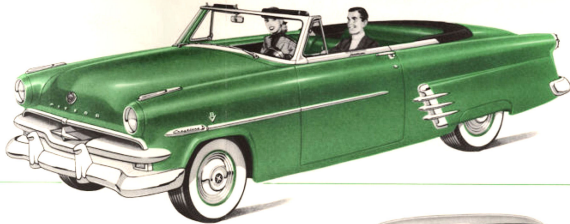
## CRESTLINE

120 H.P. V-8

DYNAMIC...  
BEAUTIFUL...  
YOUTHFUL!



1953 METEOR CRESTLINE VICTORIA

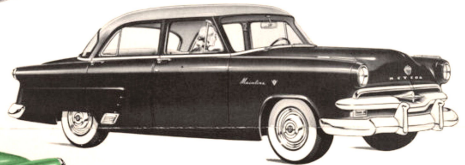


1953 METEOR CRESTLINE CONVERTIBLE

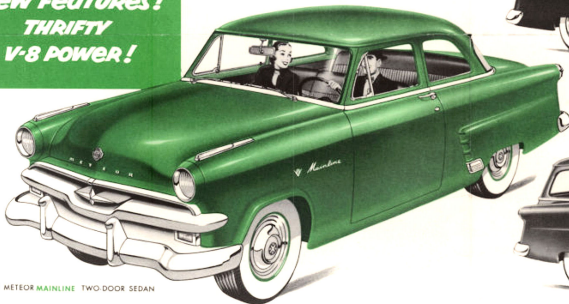
## MAINLINE

110 H.P. V-8

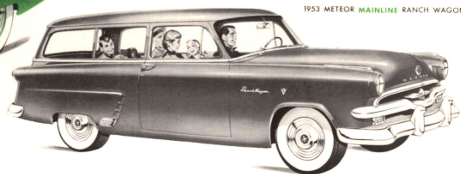
SMART  
NEW FEATURES!  
THRIFTY  
V-8 POWER!



1953 METEOR MAINLINE FOUR-DOOR SEDAN



1953 METEOR MAINLINE TWO-DOOR SEDAN



1953 METEOR MAINLINE RANCH WAGON

MORE THAN EVER - MILES AHEAD



# '53 Meteor