

06 MERCURY MONTEGO



MERCURY | NEW DOORS OPENED

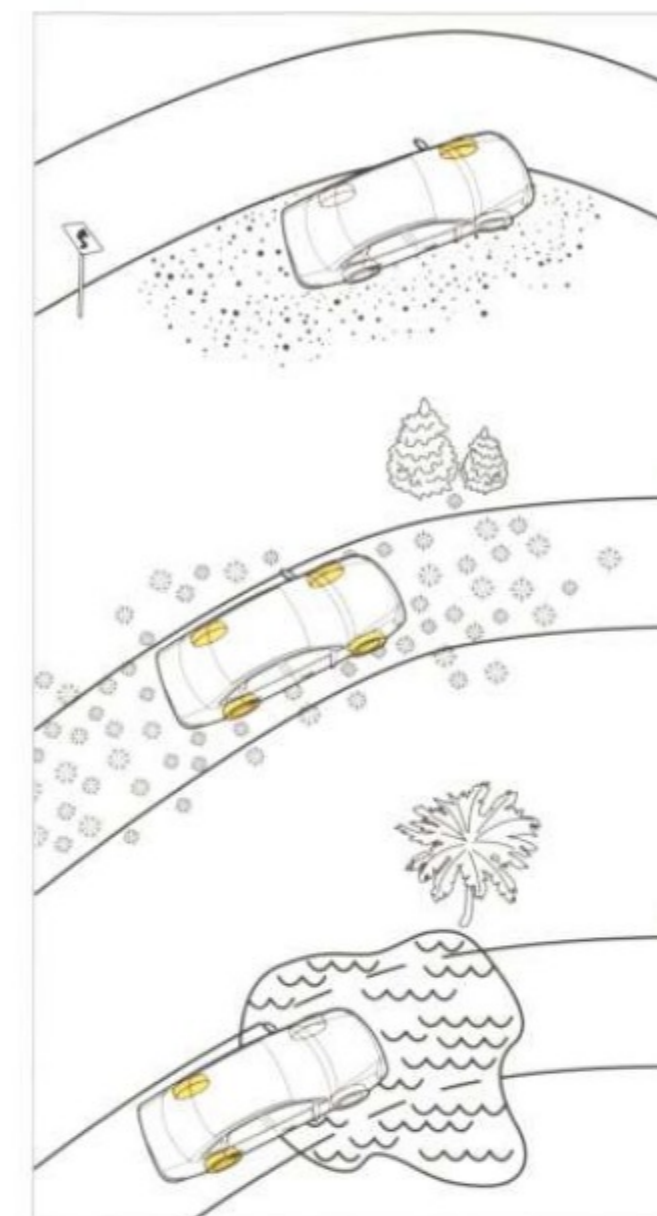
SATELLITE SILVER METALLIC: MONTEGO PREMIER WITH AVAILABLE EQUIPMENT



MERCURY



DARK SHADOW GREY METALLIC: MONTEGO PREMIER WITH AVAILABLE EQUIPMENT



[A] Because the system's Traction Control can direct torque side to side on each axle, Montego's available AWD can continue moving you forward even if only one wheel has grip.

[B] Since the wheels with the best traction always receive the most power, Montego AWD enhances control if the weather turns nasty.

[C] The instant Montego's AWD system senses a difference in speed between the front and rear wheels, the rear axle receives up to 100% of available engine torque to aid with traction.

When cornered, it really shines.

ALL-THE-TIME BENEFITS

Not just for the slippery road, Mercury Montego's available All-Wheel-Drive (AWD)* system can significantly enhance your dry-pavement fun. During rapid acceleration or hug-the-line cornering, for example, AWD seamlessly distributes power between front and rear wheels to give you increased control and performance. On snowy or wet road surfaces, of course, AWD really shines. The system's quick activation helps you get started and maintain control, even under difficult weather conditions. As soon as any wheel slip is detected, AWD delivers power to the wheels with the most traction – **maintaining optimal grip within 50 milliseconds**. It can also direct power side to side on each axle, thanks to Traction Control, allowing you to continue forward motion even if only one wheel has grip. **"I am very impressed that this is an AWD sedan – especially at this price," AutoWeek says.**

The heart of Montego's AWD operation is its HALDEX® coupling, which transmits driveshaft torque to the rear axle and wheels. Activation is seamless, smooth – and lightning-fast. The instant the system senses a difference in speed between the front and rear wheels, the rear axle receives up to 100% of available engine torque to aid traction. Teaming a Continuously Variable Transaxle (CVT) with AWD adds CVT's strengths to this system. Because the CVT offers broad drive ratios and optimizes engine torque for all driving conditions, Montego's AWD system has power on hand to maneuver through snow, mud, sand and other driving challenges.



*Available on all Montego models. HALDEX is a registered trademark owned by Haldex, AB.

mercuryvehicles.com

5 | MONTEGO: UNDERPINNINGS



MERCURY



SATELLITE SILVER METALLIC: MONTEGO PREMIER



MONTEGO: SOLID FOUNDATION | 6

- [A] HALDEX® AWD COUPLING
- [B] FULLY INDEPENDENT SUSPENSION
- [C] BIG DISC BRAKES
- [D] CUSHIONING BUSHINGS
- [E] STIFF SUBFRAMES



HANDLES WITH FLAIR

In just 50 milliseconds (that's extremely fast, by the way), the HALDEX coupling on Montego AWD models can deliver drive torque to the rear axle – giving you extra assurance that you'll have the best available traction to handle any road with confidence.

"Handling is spirited," *AutoWeek* says. Credit a fully independent front and rear suspension that's tuned to offer invigorating driving response while minimizing the impact of road bumps. Up front, MacPherson struts and rearward-facing L-arms aid in steering response and driving comfort. The multi-link rear suspension is built on a U-shaped welded-steel subframe that provides exceptional stiffness to resist the shaking, bending and other forms of movement that can accompany uneven road surfaces and potholes. This precise suspension tuning enhances driver feel from Montego's power rack-and-pinion steering. **"The ride quality in the Montego is excellent – controlled and well-damped," *The Detroit News* says.**

Standard 17" wheels (Premier models feature 18" wheels) allow large rotors and disc-brake pads to aid braking power and response time. Aluminum dual-piston front calipers exhibit excellent braking properties, while low-metallic pad materials achieve strong performance and minimize brake dust.

To improve traction on loose or slippery surfaces, available Traction Control on FWD models uses engine and/or brake controls to reduce wheel spin. On Montego AWD models, standard Traction Control works with the AWD system to direct torque side to side on each axle. **Even if only one wheel has traction, AWD can direct most of the torque there to continue forward motion.**

To maintain a supple and carefree ride, 30 bushings in the multi-link, AWD, independent rear suspension – and 24 bushings in FWD models – work to cushion forces from road seams and large bumps.

Montego's front and rear subframes and stiff unibody allow its power rack-and-pinion steering and front and rear suspension components to be finely tuned, contributing greatly to its smooth ride and agile handling characteristics.

71 MONTEGO: INTERIOR



SHALE TWO-TONE LEATHER TRIM WITH MINI-PERFORATED INSERTS: MONTEGO PREMIER

MONTEGO: AMENITIES | 8



Finely tailored, meticulously sculpted, delightfully detailed. And that's before you get in.



NEW NAVIGATION SYSTEM



DUAL-ZONE TEMPERATURE CONTROLS



NEW REAR-SEAT ENTERTAINMENT



HEATED FRONT SEATS



POWER MOONROOF

DESIGNED TO DELIGHT

"It's the details that make this car work," says *AutoWeek*. Like the modern chrome-finish trim rings around the instrument panel gauges, or the delightful satin-aluminum cuffs on the steering wheel. Audio choices range from an AM/FM stereo single-CD player on Luxury to Premier's standard Audiophile® Sound System with 6-disc in-dash CD changer and MP3 capability. Better yet is the new Navigation System, optional on Premier models. Easily accessible maps and menus are clearly displayed on a large 6.5" color LCD screen. Locating the nearest ATM, hotel, gas station or restaurant has never been easier. In addition, a handy Valet Mode lets you lock out the system when you don't want it used by others.

For those seated in the rear, they have their own advantages. For starters, **Montego is the most spacious sedan in its class*** in the critical areas of total passenger volume and rear head and leg room. And new this year is an available Rear-Seat DVD Entertainment System. With its 7" LCD viewing screen and 2 wireless headphones, you may start hearing "We're not there yet, are we?"

COMFORT PACKAGE, MONTEGO LUXURY ONLY:
AM/FM STEREO WITH 6-DISC IN-DASH CD CHANGER
4-WAY POWER FRONT-PASSENGER'S SEAT
DRIVER'S SEAT WITH POWER RECLINE**

MONTEGO PREMIER ONLY:
NAVIGATION SYSTEM†

*Standard 5-passenger Large Car class. **Also available as a stand-alone option on Montego Luxury. †Optional feature. Not available in Alaska.

mercuryvehicles.com



MERCURY



60/40 SPLIT-FOLDING REAR SEAT AND FOLD-DOWN FRONT-PASSENGER'S SEAT ALLOW ITEMS UP TO 9' THROUGH TRUNK



The height of sedan functionality.

INSIDER INFORMATION

From its inception, Mercury Montego was designed around a Command Seating™ position. Because the driver's seat sits high off the ground, benefits of this innovative thinking include easy entry and exit, a more upright seating position, and an **excellent view of the road** as you navigate through traffic. Instead of just seeing the road, you'll command it in ways you never expected.

On Montego Premier, supple leather-trimmed seats make every drive more luxurious. Power controls supply 8-way movement to the driver's seat and 4-way movement to the passenger's seat, including power recline on both. And 2 front-seat heat settings help take the chill out of crisp, autumn mornings.

Even with the front seat moved all the way back, the amount of breathing room in Montego's comforting rear seat is hard to believe. **Rear-seat leg room is best in class** – and more generous than many larger automobiles. And with **the largest trunk of any sedan**, Montego can hold everything you need to bring along for the ride.



SIT HIGH AND TAKE COMMAND OF THE ROAD

COMMAND SEATING

ENJOY THE LARGEST TRUNK OF ANY SEDAN

21.2 CU. FT.

RELAX WITH BEST-IN-CLASS REAR-SEAT COMFORT

41.9" OF LEG ROOM AND 5.8" OF KNEE CLEARANCE

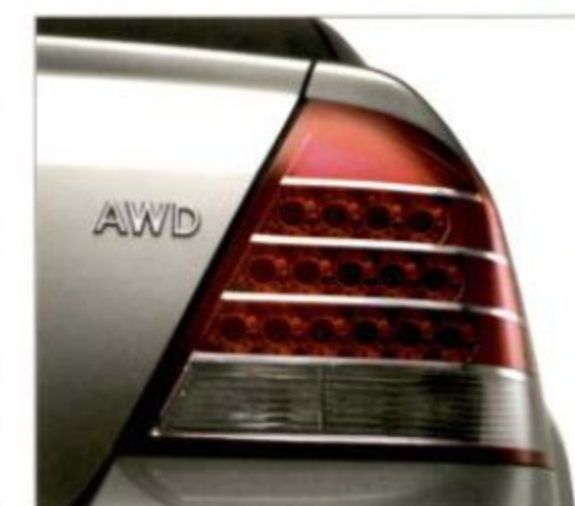


[A]	SPACE ARCHITECTURE™	Helps divert crash forces under the seats, away from occupants
[B]	PATENT-PENDING FRONT BUMPER PLATE	Reduces intrusion into the passenger compartment
[C]	DUAL-STAGE FRONT AIRBAGS	Part of the Personal Safety System® that enhances protection for the driver and front passenger
[D]	FRONT-SEAT SIDE AIRBAGS	Part of the available Safety Canopy™ System, deployed in certain side-impact or rollover events
[E]	ADAPTIVE STEERING COLUMN	Minimizes effect of crash forces on the driver

[F]	SIDE-CURTAIN AIRBAGS	Part of the available Safety Canopy System, deployed in certain side-impact or rollover events
[G]	LASER-WELDED STEEL SHEETS	Add extra strength to front frame rails
[H]	RIGID STRUCTURE	Channels crash forces into a high-strength steel "ring of protection" that surrounds the passenger compartment
[I]	SIDE-INTRUSION DOOR BEAMS	Helps protect against passenger-compartment intrusion in certain side-impact collisions



SECURITY APPROACH LAMPS
PERSONAL SAFETY SYSTEM
FRONT-PASSENGER SENSING SYSTEM
ADAPTIVE STEERING COLUMN
FRONT-SEAT SIDE AIRBAGS
SAFETY CANOPY SYSTEM
REVERSE SENSING SYSTEM
HID HEADLAMPS
LED TAILLAMPS



Interested in security? Just check our references.

SECURITY AND SAFETY

Will it help protect me in an accident? Are there safety systems covering all occupants? When shopping for a new car today, these are often the first items on the checklist. In this critical area, Mercury Montego is establishing quite a list of its own:

- Montego is the only sedan to earn Insurance Institute for Highway Safety (IIHS) "Best Pick" status,* plus the **government's highest 5-Star crash test safety rating in 4 categories** (including front and side impact) – without side airbags**
- Montego is the first sedan in its class to offer the Safety Canopy™ System with an **exclusive rollover sensor†**

That's just the beginning. All 5 seat positions receive 3-point safety belts and all outboard positions receive adjustable head restraints. Advanced SPACE Architecture™ (Side Protection And Cabin Enhancement) employs a hydroformed cross-car beam that runs between the door frames. In a side-impact collision, a bend in the beam's middle serves as a trigger point for deformation, helping to divert crash forces underneath the seats and away from occupants.

Occupant Protection Systems On every Montego, the Personal Safety System® and Front-Passenger Sensing System (FPSS) offer enhanced protection for the driver and front passenger in certain frontal collisions. Utilizing a network of smart sensors, the deployment

level of the dual-stage front airbags is based on several criteria: whether a front passenger is present and his/her weight range; the position of the driver's seat; whether the front safety belts are in use; and the overall severity of the crash. These details help the systems deploy the front airbags in just the right manner, at just the right time. To further minimize the effect of crash forces on the driver, Montego's adaptive steering column is smart enough to collapse in different ways depending on the driver's seat position and whether the front safety belts are in use.

Safety Package Available on Montego Luxury and Premier, this comprehensive system includes front-seat side airbags for enhanced chest protection, and Safety Canopy System side-curtain airbags that cover the windows on both rows of seats for **enhanced head protection for all outboard passengers**. If a rollover is starting or a side-impact collision is underway, sensors determine within milliseconds which of the airbags to deploy.

Reverse Sensing System Audibly alerts you to items behind Montego when backing up. Available on both models.

Highly Illuminating High-Intensity Discharge (HID) headlamps produce bright, white light for excellent down-the-road vision. Light-Emitting Diode (LED) taillamps illuminate quicker than traditional lamps, and make quite a design statement when lit.

*Based on 40-mph frontal offset crash test. **Excludes other Ford Motor Company vehicles. Front-seat side airbags are available. †Standard 5-passenger Large Car class.

mercuryvehicles.com

COLOR PALETTE

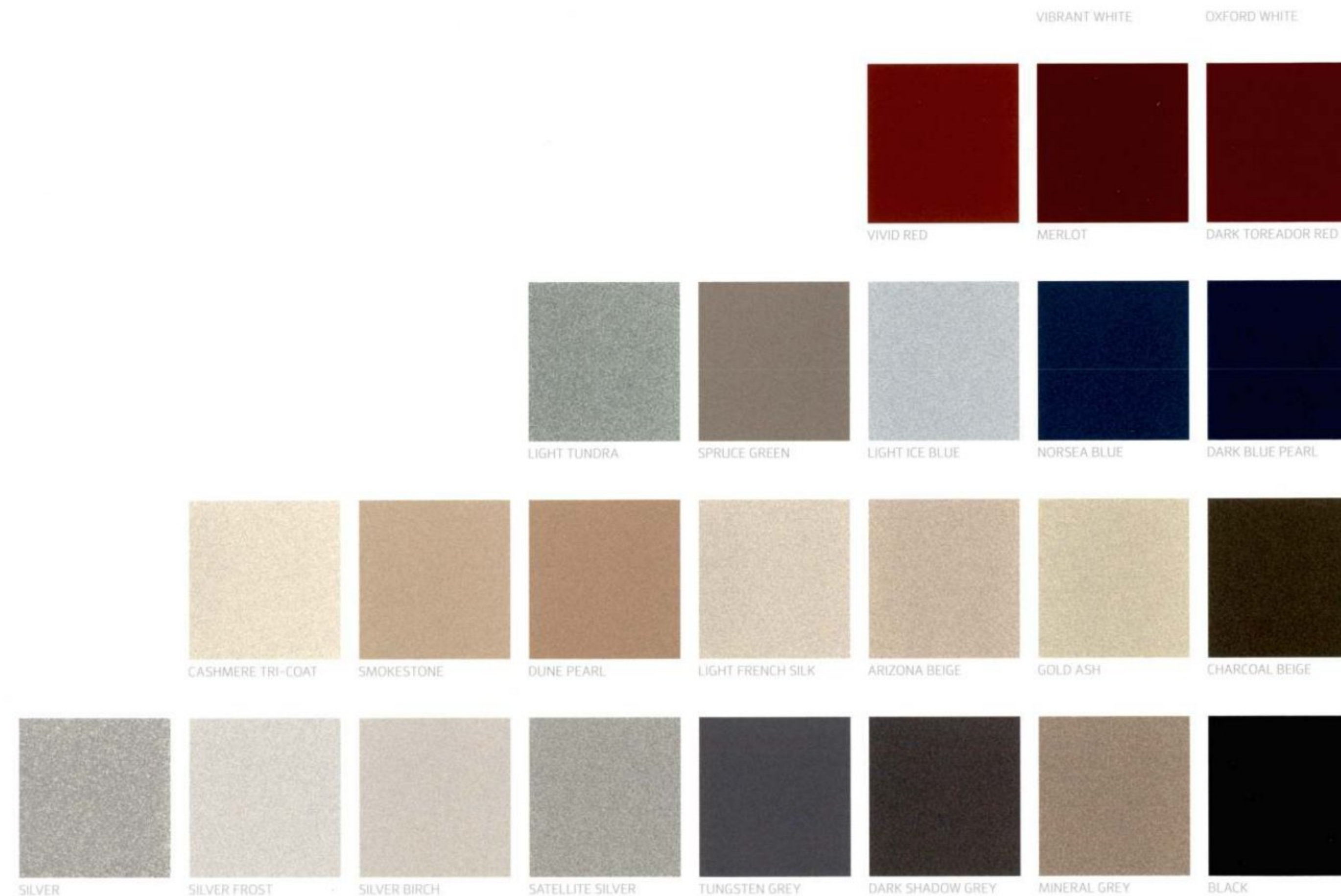
Please reference the Specifications card of your Mercury vehicle for the availability of specific Color Palette Combinations.



MERCURY | NEW DOORS OPENED

mercuryvehicles.com

MERCURY BRAND EXTERIOR PAINT COLORS



Lincoln Mercury reserves the right to change product specifications at any time without incurring obligations. Please see your Lincoln Mercury Dealer for actual paint/trim options. Mercury uses clearcoat paint for beauty and protection. All exterior paints are Metallic except for Vibrant White, Oxford White, Cashmere Tri-Coat and Black. Colors are representative only.

MERCURY BRAND CLOTH SEAT TRIM



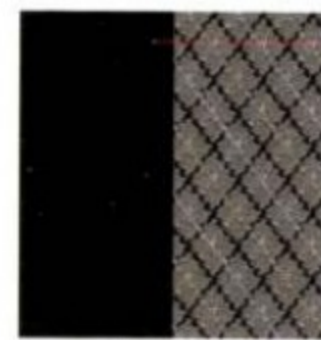
BLACK/LIGHT
PARCHMENT INSERTS



CAMEL



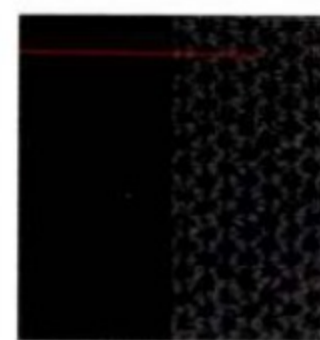
CAMEL/SAND INSERTS



CHARCOAL/MEDIUM
FLINT TWO-TONE



CHARCOAL BLACK/
MEDIUM LIGHT STONE
INSERTS



CHARCOAL BLACK
TWO-TONE



DARK CHARCOAL



LIGHT CAMEL
TWO-TONE



MEDIUM LIGHT STONE



MEDIUM LIGHT STONE
TWO-TONE



PEBBLE



PEBBLE/LIGHT PARCHMENT
INSERTS



PEBBLE TWO-TONE



SHALE TWO-TONE

MERCURY BRAND LEATHER SEAT TRIM



BLACK WITH DIAMOND
PLATE INSERTS



BLACK/LIGHT PARCHMENT
PREFERRED SUEDE®
INSERTS



CAMEL



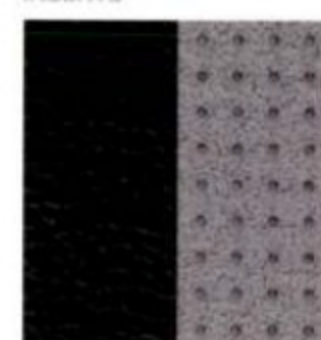
CAMEL WITH
PERFORATED INSERTS



CAMEL/SAND EMBOSSED
PREFERRED SUEDE
INSERTS



CHARCOAL/LIGHT FLINT
PERFORATED INSERTS



CHARCOAL/LIGHT FLINT
PREFERRED SUEDE
INSERTS



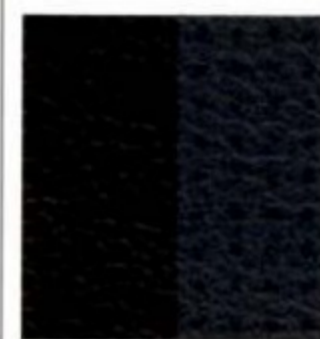
CHARCOAL/LIGHT FLINT
TWO-TONE



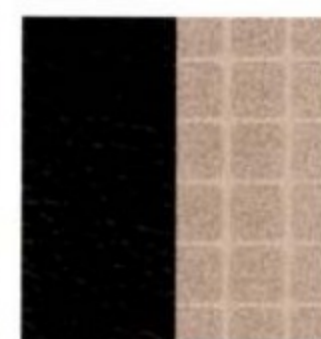
CHARCOAL BLACK



CHARCOAL BLACK WITH
PERFORATED INSERTS



CHARCOAL BLACK WITH
MINI-PERFORATED
INSERTS



CHARCOAL BLACK/SAND
EMBOSSED PREFERRED
SUEDE INSERTS



DARK CHARCOAL



DARK CHARCOAL/
MEDIUM LIGHT STONE
TWO-TONE



LIGHT CAMEL



MEDIUM LIGHT STONE



PEBBLE/LIGHT PARCHMENT
DIAMOND PLATE INSERTS



PEBBLE/LIGHT PARCHMENT
PERFORATED INSERTS



PEBBLE/LIGHT PARCHMENT
PREFERRED SUEDE
INSERTS



PEBBLE/LIGHT PARCHMENT
TWO-TONE



PEBBLE TWO-TONE
WITH MINI-PERFORATED
INSERTS



SHALE TWO-TONE
WITH MINI-PERFORATED
INSERTS

Preferred Suede is a registered trademark of Milliken & Company.



MONTEGO: POWER | 2

Modern power, precisely applied.

RESPONSIVE AND FUEL-EFFICIENT

3.0L DURATEC 30 V-6 ENGINE

203 HP & 207 LB.-FT. OF TORQUE

CONTINUOUSLY VARIABLE TRANSAXLE

6-SPEED AUTOMATIC TRANSAXLE

Power is important. Always has been. But these days, fuel economy is equally so. Adding more cubic inches, then, is not today's answer to responsive performance. Making every ounce of power work to your fullest advantage is smarter, and it's achieved with both powertrains available on Mercury Montego. Paired with either a Continuously Variable Transaxle (CVT) or 6-speed automatic, Montego's 3.0L Duratec 30 V-6 engine provides **responsive acceleration, smooth power and remarkable fuel efficiency**. The end result: a quietly confident 203 hp, 207 lb.-ft. of torque, and EPA-estimated fuel economy of 21 mpg city/29 highway on FWD models and 19 mpg city/26 highway on AWD models.

Montego's **class-exclusive CVT**, with a drive-ratio span of more than 6 to 1, offers a strong drive ratio for acceleration and passing power, and an economical ratio to **maximize fuel economy** when highway cruising. An intricate steel-link belt connecting 2 variable-size pulleys always keeps the engine in its most efficient range. Covering a nearly identical overall gear-ratio span as the CVT, Montego's electronically controlled **6-speed automatic transaxle** actually adapts to your driving conditions and adjusts shift points accordingly to optimize performance or fuel economy. In "low" range, the transmission controller increases engine braking to help hold a steady speed when going downhill on steep grades.



MERLOT METALLIC: MONTEGO PREMIER WITH AVAILABLE EQUIPMENT

mercuryvehicles.com

06 MERCURY MONTEGO



"It's the details that make this car work."

— AutoWeek



MERCURY | NEW DOORS OPENED

mercuryvehicles.com