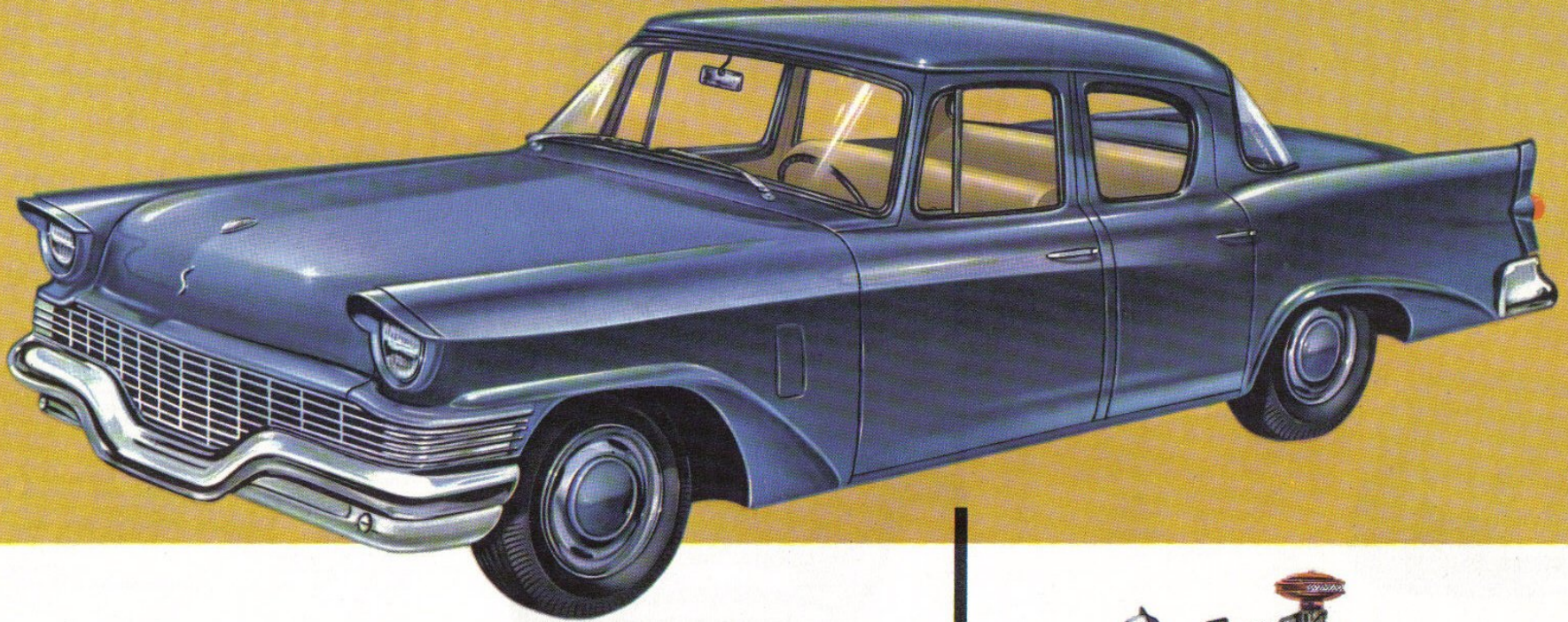
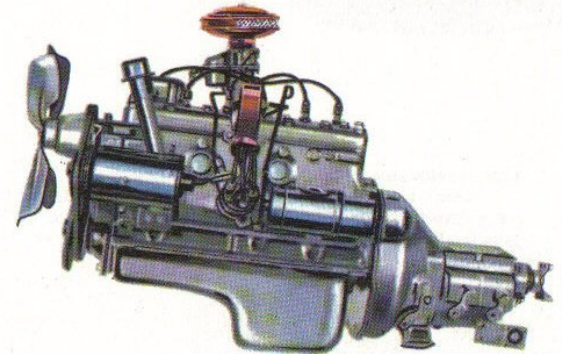


Studebaker *Champion Scotsman 4-Door*



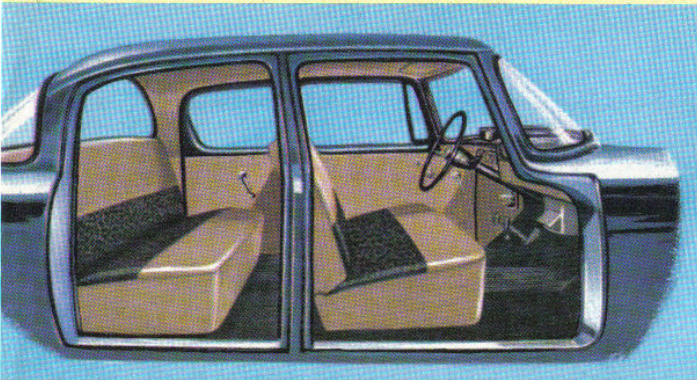
Full Size...Full Power...Maximum Economy

Enjoy complete comfort for six people in this new 4-door Champion Scotsman . . . the responsive Sweepstakes Six engine that is standard in all Studebaker Champions . . . up to 29 miles per gallon operating economy . . . and the lowest initial cost and depreciation of all major makes of cars. You'll like the smart, functional design of this new Champion Scotsman . . . styling that will stay up-to-date for more than just one year. You're sure to see the long term value in the attractive, functional interiors—built to stand hard family use. And you'll especially appreciate the many equipment features which are all included in the low initial price. For driving cross-town or cross-country, you'll find this new Champion Scotsman your most satisfactory, most economical purchase. And mile after mile you continue to benefit from the bonus built into all Studebaker products—*extra craftsmanship* that assures low up-keep and dependable operation.



The most economical, easiest-to-service powerplant on the market!

Studebaker's dependable, 7.8 to 1 compression, Sweepstakes Six . . . standard in the Champion Scotsman, has many advanced features. Water jackets that run the full length of the cylinder walls . . . full pressure lubrication . . . four automatic controls . . . moisture-proof ignition . . . 12 volt electrical system . . . a Celeron timing gear that runs quietly, never needs adjustment. It's America's most dependable Six.



Your Champion Scotsman has more headroom, both front and rear, than you'll find in most cars . . . full comfort for six people for short or long drives . . . and an eye-appealing functional interior styling that is color keyed about the rich, extra-durable, charcoal Naugahyde upholstery. This is a car that will retain its "new-car freshness" under hard family use.

You'll like the extra convenience of the three-way front seat adjustability that moves the seat *forward, upward and more erect* for the comfort of shorter drivers; and *rearward, lower and reclined* for taller persons.

Each mile you drive will increase your appreciation of the careful grouping of instruments and driving controls that lets you keep your eyes on the road, *always*. And about you, your friends and family as you ride on today's crowded roads is a solid steel shield of safety . . . the advanced box-section Studebaker body.

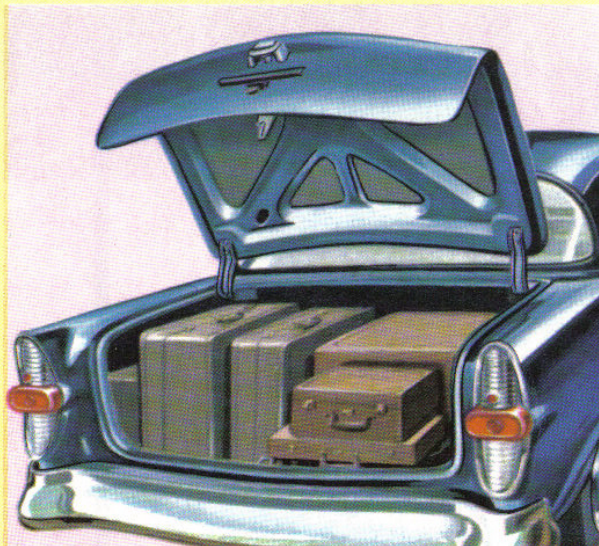
In addition to imparting a comforting feeling of security, these Studebaker Safety-Built bodies add measurably to your enjoyment . . . assure quiet, rattle-free driving as your speedometer adds up the thousands of miles.



A Safety Conscience . . . is built right into your Scotsman. Studebaker's exclusive "Cyclops Eye" speedometer shows you your speed in magnified, illuminated numbers which change from green to amber at 35 mph., to red at 55 mph. A constant safety reminder.

The Scotsman is full-sized all over

. . . there's no skimping of luggage space to provide the car's roomy interior. You can carry a complete family's vacation luggage in the trunk compartment . . . without removing the spare tire and wheel.



SPECIFICATIONS

Champion Scotsman 4-DOOR

Engine

Type	L-head, 6-cylinder
Bore & Stroke	3.0" x 4.38"
Piston Displacement, cu. ins.	185.6
Horsepower, taxable	21.6
Horsepower, max. @ r.p.m.	101 @ 4000
Torque, max. ft.-lbs. @ r.p.m.	152 @ 1800
Compression ratio	7.8 to 1
Air cleaner	dry type; wet type optional
Carburetor	single barrel, downdraft
Crankcase capacity	5 quarts
Cooling system capacity	11 quarts

Gasoline Consumption

Fuel, recommended	regular
Fuel, consumption, approx.	up to 29 m.p.g.

Electrical

Battery	12-volt, 9-plate, 50 amp. hr.
Generator, shunt-wound	30-amp. max. output
Starter switch	key start, safety type
Directional signals	standard

Chassis and Body

Transmission	3-speed standard, overdrive optional
Front suspension	independent wheel suspension; coil springs; telescopic, double-acting shock absorbers
Rear suspension	leaf springs; telescopic, double-acting shock absorbers, sea-leg mounted
Twin Traction	optional
Rear axle ratio	3.54 to 1
Steering	cam and twin lever variable ratio gear; symmetrical, centerpoint linkage; 5.25 turns lock to lock
Brakes	hydraulic, self-centering, self-energizing; 147.4 sq. in. lining
Tires, set of 5, tubeless	6.40 x 15
Fuel tank capacity	18 gallons
Windshield wipers, pair	vacuum standard, electric optional
Heater-defroster	standard

Colors	highland gray, lombard green, admiral blue
--------	--------------------------------------------

Dimensions and Weights

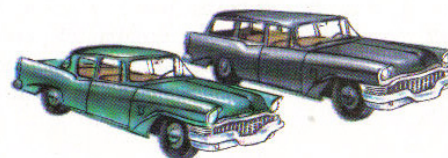
Overall length	202.4"
Overall width	75.8"
Overall height, loaded	59.8"
Wheelbase	116.5"
Shipping weight, lbs.	2725
Tread: fr.-rear	56.7"-55.7"
Turning Diameter: l.-r.	39.5'-38.5'
Headroom: fr.-rear	36.5'-35.5'
Legroom: fr.-rear	44"-39"
Hiproom: fr.-rear	59.5"-59"
Shoulder room: fr.-rear	55.5"-54.5"



Studebaker-Packard

CORPORATION

Where pride of Workmanship comes first!



ALSO AVAILABLE IN THE

Scotsman 2-door
AND *Station Wagon*