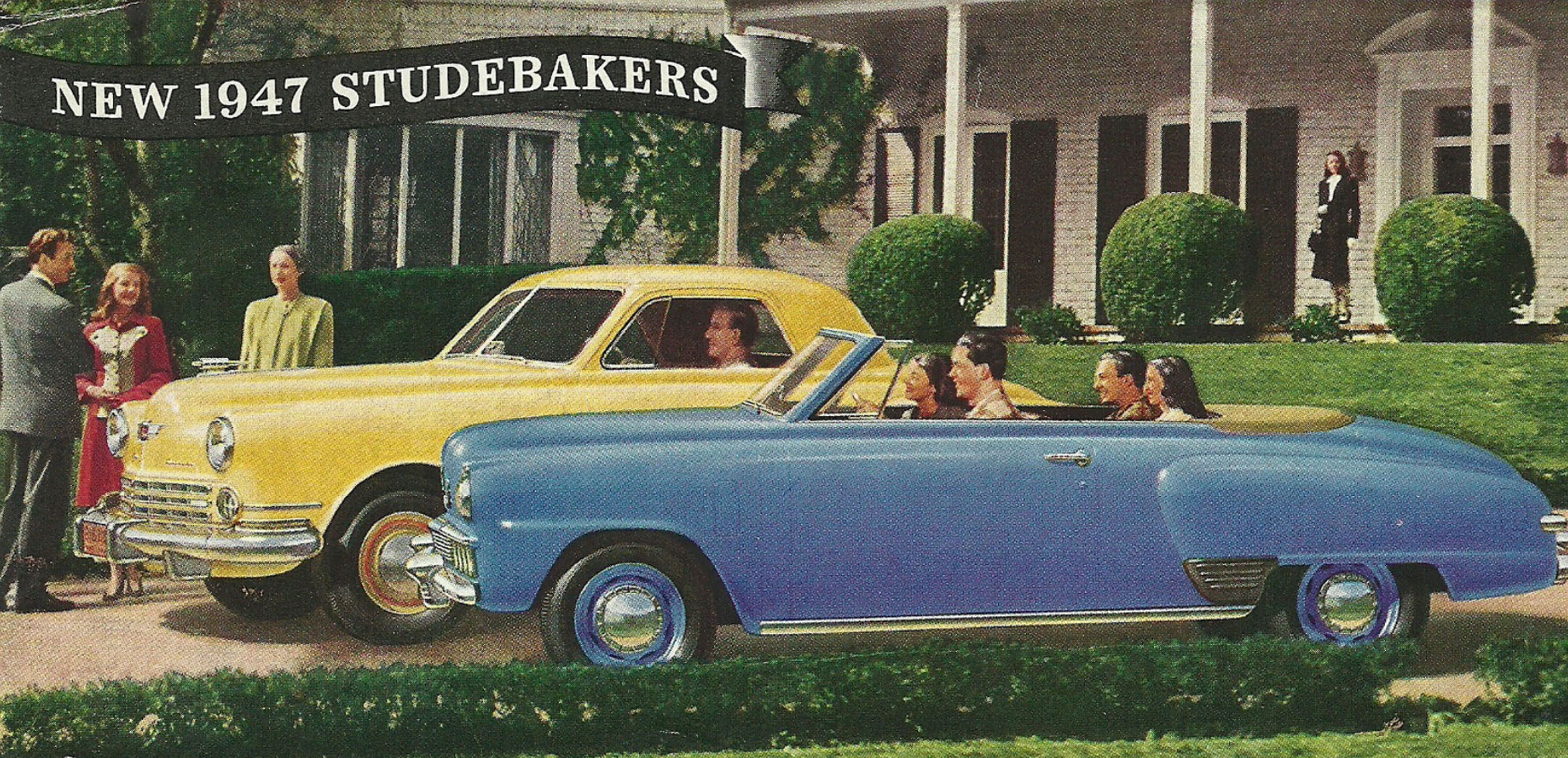
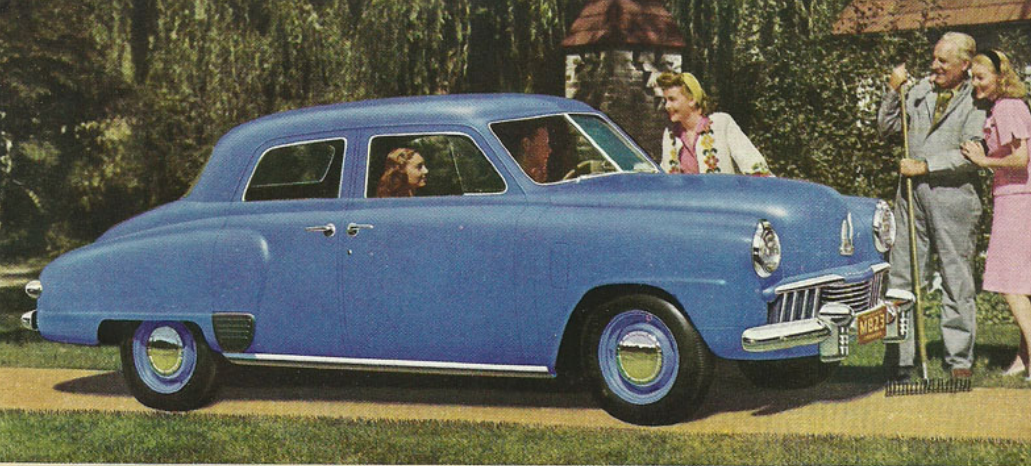
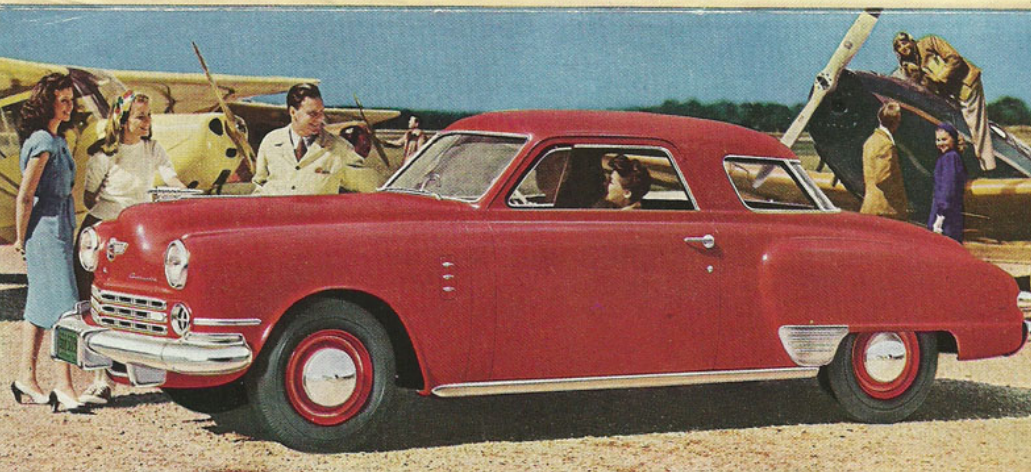


NEW 1947 STUDEBAKERS

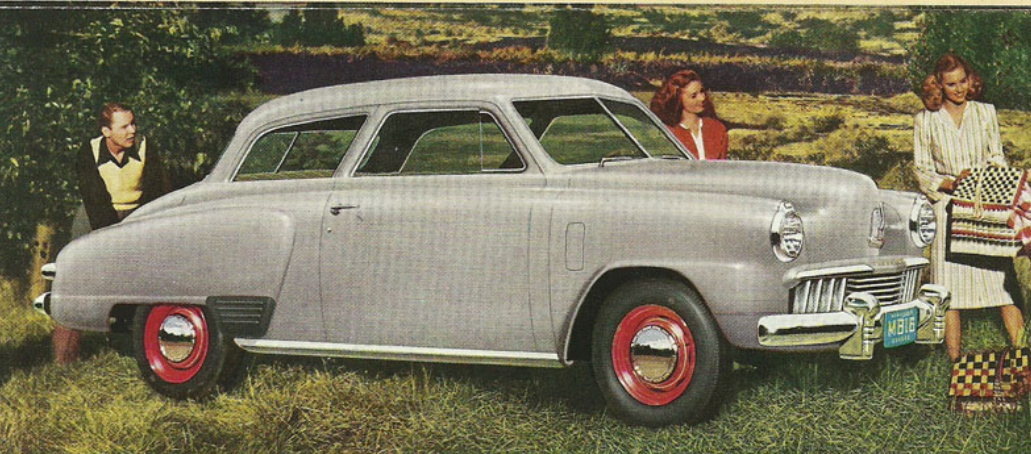




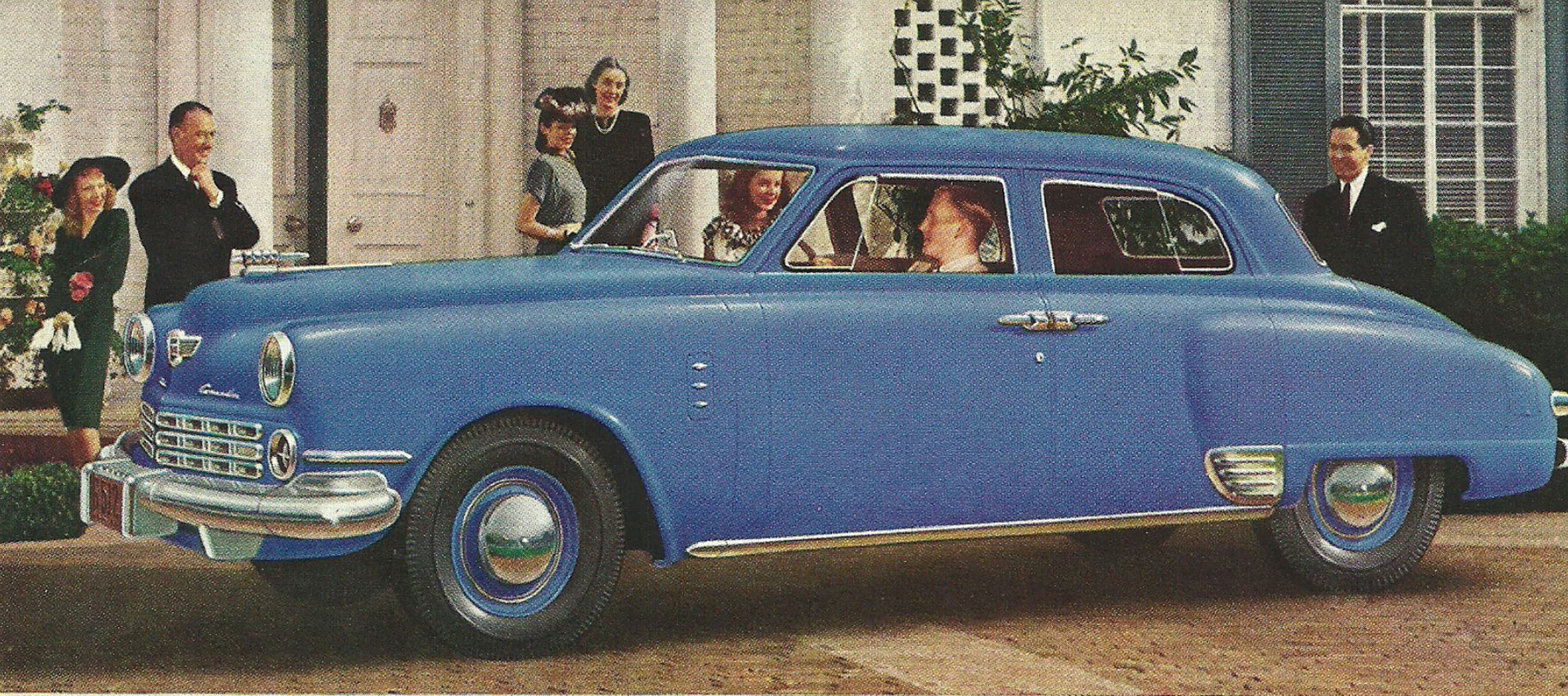
1947 Studebaker Champion Regal De Luxe 4-door Sedan for 6 passengers. This body style also available in the Commander model.



1947 Studebaker Commander Regal De Luxe Coupe for 5 passengers. This body style also available in the Champion model.



1947 Studebaker Champion Regal De Luxe 2-door Sedan for 6 passengers. This body style also available in the Commander model.



1947 Studebaker Commander Regal De Luxe Land Cruiser for 6 passengers.

First by far with a postwar car

NEW 1947 STUDEBAKER

STUDEBAKER has achieved the distinction of being first on the market with new 1947-model cars, thanks to the unique spirit that pervades its entire organization.

This folder shows you the cars that extraordinary teamwork and competence made possible.

They're cars completely new from every view. Low, long lines and superb appointments say more than columns of words could about their beauty. They're extra wide and roomy.

They're engineered in accord with advanced Studebaker principles of design that give you undreamed-of new riding comfort—plus top operating economy. And they're solid and sound with the trustworthy workmanship of the automobile industry's most painstaking craftsmen.

Airplane-type "black light" instrument panels . . . Exclusive self-adjusting brakes . . . Exclusive planar front end suspension—these features and many more are standard equipment. And, at moderate added cost, you get: Studebaker's exclusive Climatizer ventilating and heating system . . . Gas-saving overdrive . . . Automatic hill holder.



Father-and-son teams are seen at work in all sections of the modern Studebaker factories where fine craftsmanship is a 94-year tradition.

The 3-passenger coupe and convertible body styles illustrated on cover are available in either Commander or Champion models.