



SUBARU

FORESTER





Welcome to a world of new possibilities.

Don't just see it: Live it. With the 2020 Forester, you have enough comfort, safety, and versatility for this adventure and the next one. Tough and compact on the outside, spacious and inviting on the inside, the Forester can help you find possibility just about everywhere.







Performance you can trust. Capability you can feel.

The Forester gives you total driving confidence with its fun-to-drive nature, responsive handling, and outstanding ride comfort. Balanced and stable around turns, even with its SUV height, the Forester was carefully engineered to reduce fatigue on extended adventures for an enjoyable driving experience for all. And with Subaru Symmetrical Full-Time All-Wheel Drive and X-MODE® standard on all models, you can reach your destination with comfort and peace of mind.

X-MODE® and Hill Descent Control

Confidently conquer any road and enjoy the Forester's true driving potential with the traction-grabbing X-MODE® system featuring Hill Descent Control¹. You can also opt for even greater adaptability with dual-function X-MODE®², which includes two specifically designed settings: one for snow and dirt, one for deep snow and mud.

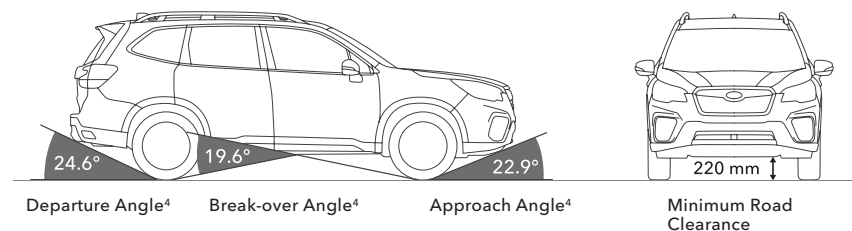
SI-DRIVE

Subaru Intelligent Drive (SI-DRIVE) lets you drive how you want, when you want. Select Intelligent Mode for balanced, smooth, and environmentally friendly performance, or Sport Mode for an immediate and linear torque-rich throttle response for sporty and smooth driving at any speed.³



High Ground Clearance

The Forester was designed for not only high SUV ground clearance but also with careful consideration for approach, departure, and break-over angles. All have been optimized to help you conquer obstacles without sustaining damage or getting stuck.



¹ Driver is always responsible for safe and attentive driving. Effectiveness of Hill Descent Control depends on many factors such as vehicle maintenance, weather, tire, and road conditions.

² Dual-function X-MODE® available on Sport, Limited, and Premier trims only.

³ Sport sharp (S#) mode on Sport trim.

⁴ When equipped with 18-inch wheels.

Comfort for everyone.

The Forester provides comfort to every passenger, in every seat. Its convenience begins even before you enter the vehicle, as the door openings have been specially designed to make getting in and out easy for everyone. Once inside, you'll notice the expanded and spacious cabin, with conveniences such as clever storage compartments and available centre console vents for the rear seats, while the quiet cabin reduces unwanted road noise and vibrations so everyone can share quality time together on the road.



Centre Console Box

The centre console is large enough to store your electronic devices like small tablets. There's also a 12V power socket inside for your convenience.



Panoramic Power Sunroof¹

The available panoramic power sunroof's large opening provides a sense of spaciousness while leaving plenty of headroom for all passengers.



Convenient Seat Access

Seat height, side sill placement, and door pillar design allow smooth seat access for rear passengers.



Side Sill Steps

The rear side sill steps are wider and flatter with a slip-resistant surface for convenient roof rail use.



¹ Touring, Sport, Limited, and Premier trims only.





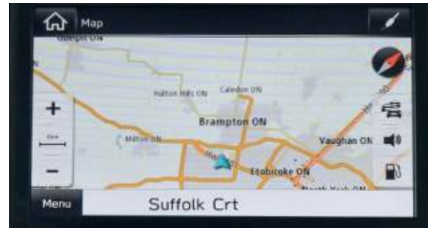
Feel connected, wherever you go.

Safely enjoy the convenience of smartphone connectivity while on the go, with standard Apple CarPlay®¹ and Android™ Auto.² Designed with both advanced functionality and ease of use in mind, the Forester provides you with the latest infotainment functions and intuitive controls. Combined with comfortable front seats that encourage a natural driving position, you'll feel right at home, no matter how far you go.



Apple CarPlay®¹ and Android™ Auto²

Use today's most popular apps with Apple CarPlay®¹ and Android™ Auto.² Voice recognition capabilities allow hands-free use, keeping everybody safe while reducing distractions when you're on the road.



Navigation³

With sharp graphics and voice recognition, the available touchscreen navigation system powered by TomTom®^{3,4} makes it easy to find your next destination. Simply swipe, pinch, and rotate the map as needed.



Multifunction Display

The available 6.3-inch LCD multifunction display provides useful information while keeping your eyes up and on the road. When the available navigation system³ is in use, it shows turn-by-turn directions as you approach intersections or turns.



Meter Display

The available full-colour LCD meter display keeps you informed about your drive and can easily be adjusted to meet your preferences.



Rearview Camera

When you shift into Reverse, the camera displays a live colour image on the head unit display, along with guidelines to make parking easy. Plus, the standard Rearview Camera washer clears dirt from the lens to ensure a clear view.



Premium Audio System with Harman Kardon®⁵ Speakers³

Featuring Harman Kardon®'s latest technology, GreenEdge®,⁵ the available premium audio system in the Forester delivers rich, clear audio through 9 speakers, including a subwoofer.

¹ Apple CarPlay® is a registered trademark of Apple Inc.

² Android™ is a trademark of Google LLC.

³ Limited and Premier trims only.

⁴ TomTom® is a registered trademark of TomTom International B.V.

⁵ Harman Kardon® and GreenEdge® are registered trademarks of Harman International Industries, Inc.



Plenty of space for all your memories.

An expanded cargo area, an easy-to-use power rear gate,¹ and a cargo light are just some of the ways the Forester brings more convenience and versatility to daily life. It's ready to help you do all the things you love doing.



Cargo Area

The extra-wide rear gate opening makes it easier than ever to load and unload your larger cargo items. The 60/40-split folding rear seats have been optimized for a flatter cargo floor, making it easier to carry longer items. Plus, the sides of the cargo area are made of a durable material that helps hide dirt and scratches so you can fully enjoy the outdoors without worry.



Power Rear Gate¹

The power rear gate¹ allows access to the cargo space with a single switch, even when your hands are full. The inner lock switch lets you conveniently close the rear gate and lock all doors at the same time.



Cargo Features

The 12V power supply, rear seat folding switch,² and bag hooks are consolidated in the same area for ease of use. The cargo net hooks are installed in the four corners of the cargo area for convenient luggage net use.

¹ Available on Touring, Sport, Limited, and Premier trims only.
² Limited and Premier trims only.

Subaru Core Technology

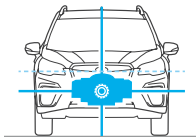
Subaru core technologies identify the Subaru brand and give you the unique driving feel you can find only in a Subaru. These core systems allow Subaru vehicles to live up to its standards in performance, comfort, safety, and reliability, while keeping its promise to deliver enjoyment and peace of mind to all passengers.



01

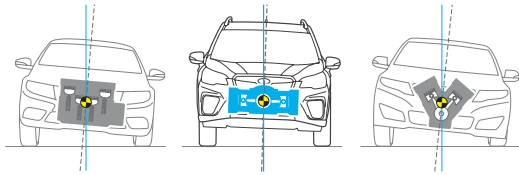
SUBARU BOXER® Engine

The SUBARU BOXER engine features pistons that move toward each other in a horizontal direction. Subaru has been committed to the SUBARU BOXER engine for over 50 years for its many advantages over other engine types, providing durability and reliable performance in its vehicles.



Increased Stability

The low centre of gravity and the flat design give it better side-to-side stability than other engine types.



Naturally Balanced

The engine's flat design is inherently rigid and self-balancing, generating less vibration than other engine types.

02

Subaru Symmetrical Full-Time All-Wheel Drive (AWD)

Subaru Symmetrical Full-Time AWD distributes power to all wheels for better traction on wet and slippery roads. Laid out in a horizontally symmetrical plane, this system has a well-balanced low centre of gravity design for a more stable and safer ride.

03

Lineartronic® CVT + Active Torque Split AWD

The Lineartronic® Continuously Variable Transmission (CVT) continuously adjusts to any ratio in its range for smooth and stepless operation that keeps the engine in its most efficient range for smooth acceleration, fuel efficiency, and performance when needed. It comes paired with Subaru's active torque split AWD system. Its default torque is well-balanced front to rear and adjusts in response to real-time traction conditions.

04

Subaru Global Platform

Enhancing all-around safety and performance, the Subaru Global Platform offers a driving feel you can find only in a Subaru. It's the future of Subaru—and delivers even more enjoyment and peace of mind to all drivers and passengers.

More Fun to Drive

The Forester SUV handles more like a car, for more responsive handling and better hazard avoidance on the road. Even with its high ground clearance, the Forester securely hugs the road around turns, resulting in an SUV that's safer and more fun to drive—even on long trips.

Ride Comfort

Improvements in chassis rigidity, suspension, and stabilisers efficiently absorb shocks from the road and hide uneven surfaces, allowing more comfort and less fatigue on long rides.

Safer

Thanks to its strong and energy-dispersing design, the Subaru Global Platform can help protect you and your passengers.



An extra set of eyes every time you drive.

Every Forester includes standard EyeSight® Driver Assist Technology.¹

EyeSight® Driver Assist Technology integrates multiple safety and convenience features so you'll always feel comfortable and protected, wherever you go. EyeSight gives you a virtual second pair of eyes on the road that can warn you of potential danger ahead and even apply the brakes if necessary. It's a vigilant safety feature that gives peace of mind to every drive. Once you experience it, driving will never be the same.



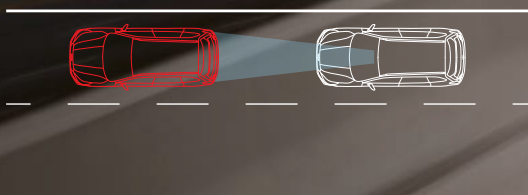
Pre-Collision Braking

A driver ahead unexpectedly hits the brakes or cuts you off. EyeSight® warns you, applies brakes and, at lower speeds, can even help you stop your Forester.



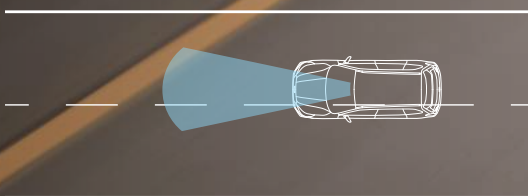
Pre-Collision Throttle Management

If you put the car in Drive instead of Reverse and EyeSight® sees an object in your path, it reduces throttle input to help you avoid accelerating into it.



Adaptive Cruise Control with Lane Centring Assist

This system can automatically keep you centred in your lane, safely behind the car in front of you—even in traffic and around curves.



Lane Departure and Sway Warning

You accidentally drift to the edge of your lane and begin to cross into another. EyeSight® watches for lane markers and chimes to warn you.

¹ EyeSight® is a driver assist technology, which may not operate optimally under all driving conditions. The driver is always responsible for safe and attentive driving. System effectiveness depends on many factors such as vehicle maintenance, weather and road conditions. The Pre-Collision Braking System is designed to provide automatic braking that either prevents a collision or reduces the severity of a frontal impact. Pre-Collision Throttle Management is designed to reduce acceleration and minimize the severity of certain frontal impacts. Lane Centring Assist is designed to assist the driver and are not substitutes for safe and attentive driving. Lane centring function operates only when used in conjunction with Adaptive Cruise Control. The Lane Departure and Sway Warning, and Lane Keep Assist operate only when the lane markings are visible, and its effectiveness depends on many factors. See Owner's Manual for complete details on system operation and limitations.



The road may waver, but not your priorities.

Safety that meets the highest expectations.

We know what's most important to you when you drive, and that's why safety is at the top of our minds, too. The Forester offers some of the most advanced active safety and driver awareness features on the market. EyeSight® Driver Assist Technology is standard on every Forester, while available LED Steering Responsive Headlights with High Beam Assist¹ can help make nighttime driving even safer. And for obstacles you don't see coming, you're covered with the available Subaru Rear/Side Vehicle Detection (SRVD) system, featuring Blind-Spot Detection (BSD) and Rear Cross-Traffic Alert (RCTA).^{1,2}



Blind-Spot Detection

Using radar sensors, Blind-Spot Detection warns you with a visual indicator on your side mirror if it senses a vehicle in your blind spot. Another feature of this system, Lane Change Assist,^{1,2} alerts you with a flashing indicator on your side mirror if it senses a vehicle approaching at a higher speed in a neighbouring lane and you signal for a lane change.



Rear Cross-Traffic Alert

Rear Cross-Traffic Alert uses radar sensors to help warn you of traffic approaching from the side as you are backing up, utilising a flashing visual indicator on your side mirror and Rearview Camera^{1,2} display as well as an audible warning.



Reverse Automatic Braking

Reverse Automatic Braking^{1,3} can detect objects directly behind your vehicle when backing up at a low speed and can help bring the Forester to a stop should an object be detected within its range and the driver fail to act. There's also the Rearview Camera to help you keep an eye out.

1 Availability varies by trim level. See your retailer for details. 2 Blind-Spot Detection, Lane Change Assist and Rear Cross-Traffic Alert are systems designed to assist the driver by monitoring the rear and side areas of the vehicle during a lane change or reversing and are not a substitute for safe and attentive driving. 3 The Reverse Automatic Braking System is not a substitute for safe and attentive driving. System effectiveness depends on many factors, such as vehicle maintenance, weather and road conditions. Always exercise caution and use vehicle mirrors and the Rear-Vision Camera when backing up. See Owner's Manual for complete details on system operation and limitations. 4 Activation with subscription required. 5 EyeSight® is a driver assist technology, which may not operate optimally under all driving conditions. The driver is always responsible for safe and attentive driving. System effectiveness depends on many factors such as vehicle maintenance, weather and road conditions. The Pre-Collision Braking System is designed to provide automatic braking that either prevents a collision or reduces the severity of a frontal impact. Pre-Collision Throttle Management is designed to reduce acceleration and minimize the severity of certain frontal impacts. Advanced Adaptive Cruise Control and Brake Light Recognition are designed to assist the driver and are not substitutes for safe and attentive driving. Lane centring function operates only when used in conjunction with Advanced Adaptive Cruise Control. The Lane Departure and Sway Warning, and Lane Keep Assist operate only when the lane markings are visible and its effectiveness depends on many factors. See Owner's Manual for complete details on system operation and limitations. 6 The DriverFocus safety technology is a driver recognition system designed to alert the driver if their attention to the road wavers or if the driver's face appears to turn away. The driver is always responsible for safe and attentive driving. System effectiveness may be affected by articles of clothing worn on the head or face. See Owner's Manual for complete details on system operations and limitations.



SUBARU STARLINK® Connected Services

The Forester features next-generation SUBARU STARLINK® Connected Services^{1,4} technology, bringing you added safety, security and convenience. It can alert a first responder in an emergency, help police locate your vehicle if it's stolen and more. And to get you started, new Forester drivers enjoy a free three-year SUBARU STARLINK® Connected Services subscription, which includes Advanced Automatic Collision Notification, Enhanced Roadside Assistance, SOS Emergency Assistance and customisable vehicle alerts. It's control when you want it, and help when you need it.



DriverFocus™ Distraction Mitigation System

Subaru is taking on one of the biggest issues in the automotive industry: distracted driving. The Forester features an award-winning state-of-the-art safety system that helps reduce distracted driving for both new and experienced drivers. Working with EyeSight® Driver Assist Technology,⁵ DriverFocus™^{1,6} is like having an attentive co-pilot along for the ride, ready to give a helpful alert if a driver becomes distracted or drowsy.

2020 Forester | Features & Dimensions

Panoramic Power Sunroof¹



LED Headlights



Dual-zone Automatic Climate Control²



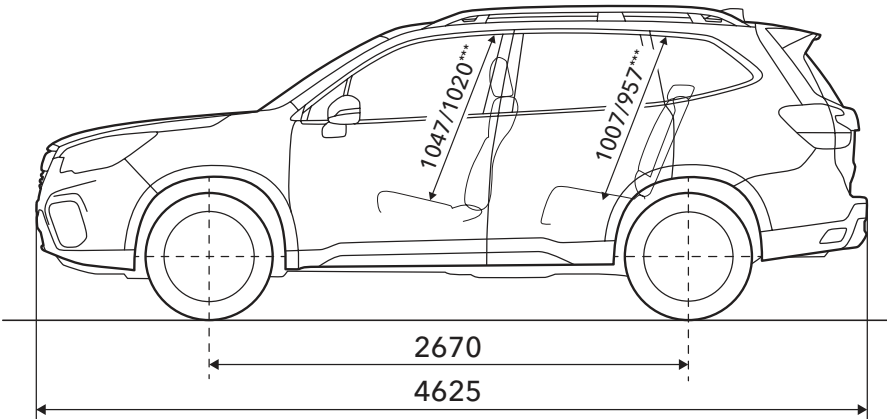
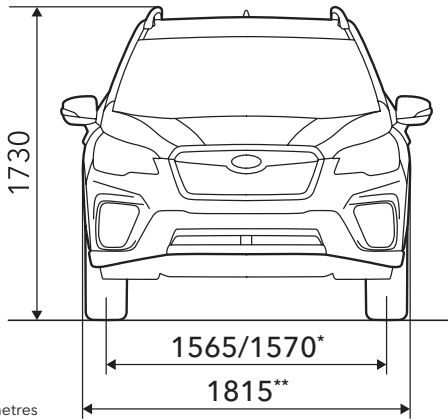
Two-position Driver's Seat Memory³



Roof Rails



Dual-function X-MODE^{®4}



Measurements in millimetres
* Front/Rear.
** Excluding mirrors.
*** With panoramic power sunroof.

For a detailed list of specifications, features, accessories, and model comparisons, please visit Subaru.ca or your nearest authorized Subaru Retailer.

1 Available on Touring, Sport, Limited, and Premier trims. 2 Not available on Forester trim. 3 Limited and Premier trims only. 4 Sport, Limited, and Premier trims. 5 Apple CarPlay[®] is a registered trademark of Apple Inc. 6 Android[™] is a trademark of Google LLC. 7 Compatible smartphone and application required. For application to operate, latest version of the application is required. Data provided by smartphone is displayed on the audio system screen. Some provinces prohibit the operation of handheld electronic devices while operating a vehicle. Smartphone apps should only be launched when vehicle is safely parked. Your wireless carrier's rates may apply. Aha[™] is a trademark of Harman International Industries, Inc. 8 Apple CarPlay[®] and iPod[®] are registered trademarks of Apple Inc. 9 Bluetooth[®] is a registered trademark of Bluetooth SIG, Inc., America. 10 Activation and required monthly subscription sold separately. Includes 3-month trial subscription. See your retailer. SiriusXM[®], Travel Link[®], and the SiriusXM logo, channel names and logos are trademarks of Sirius XM Radio Inc. and are used under licence by Sirius XM Canada Inc. Subscriptions to SiriusXM Canada are subject to the SiriusXM Canada Customer Agreement and other terms and conditions. 11 EyeSight[®] is a driver assist technology, which may not operate optimally under all driving conditions. The driver is always responsible for safe and attentive driving. System effectiveness depends on many factors such as vehicle maintenance, weather and road conditions. The Pre-Collision Braking System is designed to provide automatic braking that either prevents a collision or reduces the severity of a frontal impact. Pre-Collision Throttle Management is designed to reduce acceleration and minimize the severity of certain frontal impacts. Lane Centring Assist is designed to assist the driver and are not substitutes for safe and attentive driving. Lane centring function operates only when used in conjunction with Adaptive Cruise Control. The Lane Departure and Sway Warning, and Lane Keep Assist operate only when the lane markings are visible and its effectiveness depends on many factors. See Owner's Manual for complete details on system operation and limitations. 12 Activation with subscription required. 13 This system is not a substitute for safe and attentive driving. System effectiveness depends on many factors, such as vehicle maintenance, weather and road conditions. Always exercise caution and use vehicle mirrors and the Rear-Vision Camera when backing up. See Owner's Manual for complete details on system operation and limitations. 14 Blind-Spot Detection, Lane Change Assist and Rear Cross-Traffic Alert are systems designed to assist the driver by monitoring the rear and side areas of the vehicle during a lane change or reversing and are not a substitute for safe and attentive driving. 15 Harman Kardon[®] is a registered trademark of Harman International Industries, Inc. 16 The DriverFocus[™] Distraction Mitigation System is a driver recognition technology designed to alert drivers if their attention to the road wavers or if the driver's face appears to turn away. The driver is always responsible for safe and attentive driving. System effectiveness may be affected by articles of clothing worn on the head or face. See Owner's Manual for complete details on system operation and limitations.



Forester

- 182-hp 2.5-litre 4-cylinder SUBARU BOXER® engine with direct injection
- Subaru Symmetrical Full-Time All-Wheel Drive with X-MODE® featuring Hill Descent Control
- Lineartronic® CVT (Continuously Variable Transmission) with Active Torque Vectoring
- SI-DRIVE Engine Performance Management
- Auto Start Stop
- 17-inch steel wheels with covers
- Wiper blade with integrated washer nozzle
- Rearview Camera with washer
- Auto-on/off LED headlights
- Automatic climate control
- Cloth upholstery
- Rear Seat Reminder
- Heated front seats
- Raised roof rails: black finish
- 6.5-inch infotainment system: AM/FM/CD/MP3/WMA audio system with high-resolution touchscreen display, Apple CarPlay,®5 Android™ Auto,®6 STARLINK® smartphone integration (including Aha™ radio),7 4 speakers, dual USB input ports/iPod®8 control, auxiliary audio input, steering wheel-integrated controls, Bluetooth®9 mobile phone connectivity with voice activation and Bluetooth®9 streaming audio, SiriusXM® Satellite Radio10 and Travel Link®10
- EyeSight® Driver Assist Technology11



Sport

Includes Touring key features and adds/upgrades:

- Dual-function X-MODE® with Hill Descent Control
- SI-DRIVE with Sport Sharp (S#) mode
- 18-inch dark grey-painted alloy wheels
- LED steering responsive headlights
- LED fog lights
- Roof rails with integrated tie-downs
- Front, rear, and side underguards with orange accents
- Orange and gloss black exterior accents
- Door mirrors with LED integrated turn signals
- Dark Grey sport fabric with leather shifter
- Orange stitching and interior trim accents
- Sport gauges with colour LCD display
- 8-inch infotainment system: AM/FM/CD/MP3/WMA audio system with high-resolution touchscreen display, Apple CarPlay,®5 Android™ Auto,®6 STARLINK® smartphone integration (including Aha™ radio),7 6 speakers, dual USB input ports/iPod®8 control, auxiliary audio input, steering wheel-integrated controls, Bluetooth®9 mobile phone connectivity with voice activation and Bluetooth®9 streaming audio, SiriusXM® Satellite Radio10 and Travel Link®10



Convenience

Includes Forester key features and adds/upgrades:

- Lineartronic® CVT with manual-mode paddle shifters
- Roofline spoiler
- Multi-reflector halogen fog lights
- 17-inch aluminum-alloy wheels
- Windshield wiper de-icer
- 6.3-inch colour multifunction display
- Premium Cloth upholstery
- 10-way power-adjustable driver's seat, including lumbar support
- Leather-wrapped steering wheel
- Dual-zone automatic climate control
- Rear seat armrest with dual cupholders
- Tonneau cover
- SUBARU STARLINK® Connected Services12
- Proximity Key with Push-button Start
- Reverse Automatic Braking (RAB)13
- 6 speakers



Limited

Includes Touring key features and adds/upgrades:

- Dual-function X-MODE® with Hill Descent Control
- 18-inch aluminum-alloy wheels
- LED steering responsive headlights
- Two-position driver's seat memory
- Heated steering wheel and rear outboard seats
- One-touch folding rear seatbacks
- Auto-dimming side-view mirrors with approach lighting
- Auto-dimming rearview mirror with compass
- Door mirrors with LED integrated turn signals and passenger-side reverse tilt function
- Leather-trimmed upholstery
- Leather CVT shift boot
- 8-inch infotainment system with navigation: AM/FM/CD/MP3/WMA audio system with high-resolution capacitive touchscreen display with GPS navigation system, Apple CarPlay,®5 Android™ Auto,®6 STARLINK® smartphone integration (including Aha™ radio),7 dual USB input ports/iPod®8 control, auxiliary audio input, SMS text messaging capability, Bluetooth®9 mobile phone connectivity with voice activation and Bluetooth®9 streaming audio, SiriusXM® Satellite Radio,10 Traffic®10 and Travel Link®10
- Harman Kardon®15 9-speaker audio system with 8-channel amplifier



Touring

Includes Convenience key features and adds/upgrades:

- Subaru Rear/Side Vehicle Detection (SRVD) with Blind-Spot Detection (BSD) and Rear Cross-Traffic Alert (RCTA)14
- High Beam Assist (HBA)
- Reclining rear seat
- Dual rear USB input ports and A/C vents
- Power rear gate
- Panoramic power sunroof



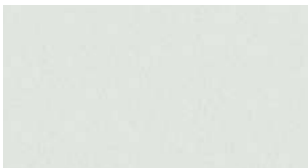
Premier

Includes Limited key features and adds/upgrades:

- DriverFocus™ Distraction Mitigation System16
- Brown Leather-trimmed upholstery
- Premier 18-inch aluminum-alloy wheels
- LED fog lights
- Roof rails with silver accents and integrated tie-downs
- Front, rear, and side underguards with silver finish
- Satin chrome side mirrors
- Chrome door handles
- Stainless steel rear bumper step pad
- 8-way power-adjustable front-passenger's seat

2020 Forester | Colours

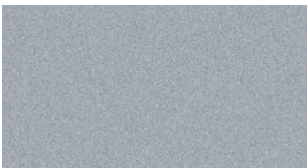
Exterior Colours



Crystal White Pearl



Sepia Bronze Metallic



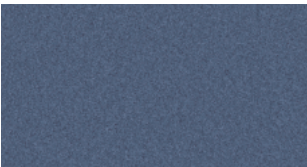
Ice Silver Metallic



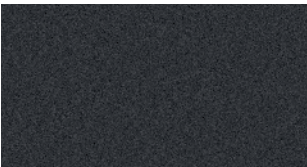
Jasper Green Metallic



Crimson Red Pearl



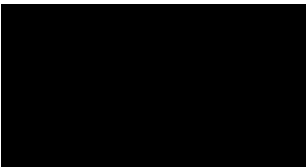
Horizon Blue Pearl



Magnetite Grey Metallic

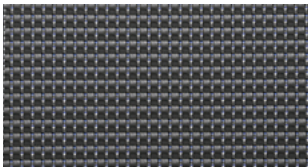


Dark Blue Pearl



Crystal Black Silica

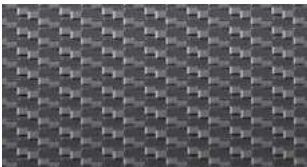
Seat Material



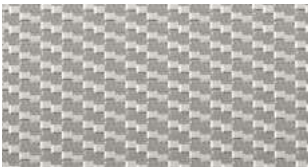
Black Cloth (BC)



Platinum Cloth (PC)



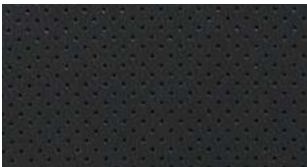
Black Premium Cloth (BPC)



Platinum Premium Cloth (PPC)



Dark Grey Sport Cloth (DGSC)



Black Leather (BL)



Platinum Leather (PL)



Brown Leather (BRL)

| Colour Combinations | Forester | Convenience | Touring | Sport | Limited | Premier |
|-------------------------|----------|-------------|------------|-------|----------|---------|
| Crystal White Pearl | BC | BPC | BPC | DGSC | BL | BRL |
| Sepia Bronze Metallic | BC | BPC | BPC | – | BL | – |
| Ice Silver Metallic | BC | BPC | BPC | DGSC | BL | BRL |
| Jasper Green Metallic | BC | BPC | BPC | – | BL or PL | BRL |
| Crimson Red Pearl | BC | BPC | BPC | – | BL | – |
| Horizon Blue Pearl | BC or PC | BPC or PPC | BPC or PPC | – | BL or PL | BRL |
| Magnetite Grey Metallic | BC | BPC | BPC | DGSC | BL | BRL |
| Dark Blue Pearl | – | – | – | DGSC | – | – |
| Crystal Black Silica | BC | BPC | BPC | DGSC | BL or PL | BRL |



Subaru Warranties

Every Subaru vehicle is designed and built to offer our customers the highest possible level of quality and reliability. We are proud of our vehicles and proud to stand behind them with a comprehensive warranty. For 2020 model-year vehicles, the warranty on all Subaru vehicles consists of the following:

New Vehicle Limited Warranty (36 month/60,000 km) – Covers basic and major components for 36 months or 60,000 km.

Major Component Limited Warranty (60 month/100,000 km) – Extends coverage of major components (more than just powertrain) up to 60 months or 100,000 km.

Surface Corrosion Limited Warranty (36 month/60,000 km) – Covers surface corrosion to visible painted body panels for 36 months or 60,000 km.

Anti-Perforation Limited Warranty (60 month/unlimited km) – Covers perforation due to corrosion to body sheet metal panels for 60 months, regardless of kilometres.

Emission Control System Limited Warranty – Covers some emissions components for 36 months or 60,000 km and the major parts of the emission control system for 96 months or 130,000 km.

Parts and Accessories Limited Warranty – Covers Subaru parts and accessories installed by the retailer prior to retail delivery of the vehicle for 36 months or 60,000 km, and Subaru parts and accessories installed by the retailer after the retail delivery of the vehicle for 12 months or 20,000 km from the date of the installation.

The above information is an overview of warranty coverage and is not a warranty statement. If you wish to see more details regarding Subaru warranties, please refer to your Subaru warranty booklet, contact your local retailer or visit our Web site at subaru.ca.

Subaru 360 C.A.R.E. Program (36 months/unlimited km)

Access to dedicated Subaru 360 C.A.R.E. (Customer Assistance for Roadside Emergencies) Roadside Assistance Services, which includes access to 1,000 CAA and AAA offices throughout Canada and the United States. In addition to towing, coverage also includes Fuel Delivery, Battery Boost, Flat Tire Service, Lock-Out Service, Trip Accident & Mechanical Breakdown Assistance Service, Winching and Extrication Service, Personalized Trip Planning and Routing, Theft and Hit-and-Run Reward, and Arrest Bond Certificate.

The above information is an overview of services. If you wish to see more details regarding Subaru 360 C.A.R.E., please visit our Web site at subaru.ca.

Subaru Protection Plan

As a Subaru owner, you have expectations for a pleasurable, trouble-free ownership experience – now and into the future. Once your 36-month/60,000-km New Vehicle Limited Warranty period ends,¹ our Subaru Protection Plan (SPP) – the only vehicle service contract endorsed by Subaru Canada for Subaru vehicles – can prolong your hassle-free ownership experience with three levels of extended service contract coverage tailored to your needs: Powertrain Protection; Major Protection; or Complete Protection (best level of coverage to complement the 60-month/100,000-km Major Component Limited Warranty). SPP offers comprehensive mechanical and electrical coverage and a number of additional features and benefits, such as Roadside Assistance and Alternate Transportation, for up to 7 years or 160,000 kilometres from your vehicle's in-service date. Whether your vehicle is purchased or leased, SPP protects you and your investment. Be sure to ask your retailer for details or visit subaru.ca.

¹ If you already own a Subaru vehicle and it is still within the 36-month/60,000-km New Vehicle Limited Warranty period, you are still eligible for SPP.

Subaru vehicles are uniquely designed to get out there more and to leave less behind. We build our vehicles for maximum longevity, because more time spent on the road equals less time spent in junkyards and landfills. Fully 98% of our vehicles sold in Canada over the last 10 years are still on the road today.¹ You'll also find very little waste created in the production of a Subaru. Many of our vehicles are built in the Subaru of Indiana Automotive, Inc., (SIA) factory, which was the first manufacturing facility in the U.S. to achieve zero-landfill status. Other Subaru facilities around the world now achieve similar goals in helping to preserve the environment. Respect for our surroundings is yet another way that Subaru vehicles help to build driver confidence for the road ahead.

¹ Based on IHS Markit, Canadian Vehicles in Operation as of June 30, 2017, for Model Years 2008 to 2018 vs. Total New Registrations of those vehicles.



For a detailed list of specifications, features, accessories, and model comparisons, please visit Subaru.ca or your nearest authorized Subaru Retailer.

The Supplemental Restraint System (SRS airbags) affords the driver and passenger additional protection in some collisions. This system provides supplemental protection only, and seatbelts must be worn in order to avoid injuries to out-of-position occupants upon airbag deployment. The combination of SRS and seatbelts provides the best protection in a serious accident. All illustrations, specifications, features and photographs contained in this brochure are based on product information available at the time of its printing and may not be completely accurate following its publication. Colours shown may vary due to reproduction variations in the printing process, and some vehicle parts cannot be shown in certain photographs. Subaru Canada, Inc. reserves the right to discontinue or make changes at any time, without notice or incurring obligations, to colours, materials, equipment, accessories, features, specifications and models, or to change their prices. Some models shown may be from international markets and are not available in Canada; may be shown with equipment or accessories that are optional (at extra cost) or available only in certain combinations; or may be subject to product delays or not be available in Canada. Please visit subaru.ca for the latest information and specifications. For complete details on product updates and warranties, please contact your Subaru retailer. Ascent, BRZ, Crosstrek, Forester, Impreza, Legacy, Outback, WRX, STI, EyeSight, Lineartronic, X-MODE, STARLINK, Subaru and SUBARU BOXER are registered trademarks of SUBARU CORPORATION. Aha™ is a trademark of Harman International Industries, Inc. Harman Kardon® is a registered trademark of Harman International Industries, Inc. Android™ is a trademark of Google LLC. Apple CarPlay® and iPod® are registered trademarks of Apple Inc. Bluetooth® is a registered trademark of Bluetooth SIG, Inc., America. TomTom® is a registered trademark of TomTom International B.V. SiriusXM®, Traffic®, Travel Link® and the SiriusXM logo, channel names and logos are trademarks of Sirius XM Radio Inc. and are used under licence by Sirius XM Canada Inc. Subscriptions to SiriusXM Canada are subject to the SiriusXM Canada Customer Agreement and other terms and conditions. Printed in Canada. © 2019 Subaru Canada, Inc. 2020 model year.



Environmental Management System
(EMS) ISO 14001:2015 certified by SGS

This booklet was printed on FSC® certified paper and contains 55% recycled fibre. It is chlorine-free, recyclable and biodegradable. FSC® (Forest Stewardship Council®) is an international organization that brings people together to find solutions that promote responsible management of the world's forests. This booklet was also produced using a "GREEN" printing process, which includes vegetable-based inks that leave no harmful residue. Please recycle.



subaru.ca

SUBARU CANADA, INC.

560 Suffolk Court, Mississauga, ON, L5R 4J7