

BRZ 2018



SUBARU

Confidence in Motion



FOR THE LOVE OF THE DRIVE.

Every car has a purpose. For the BRZ, it's this: to make driving more enjoyable, for all those who drive it. Designed around the low-profile, high-RPM SUBARU BOXER® engine, the BRZ is the quintessential performance formula—front engine, rear-wheel drive and feather-light. Get it out on the road and you'll see. This is how sports cars were meant to be built, and how they were meant to drive.

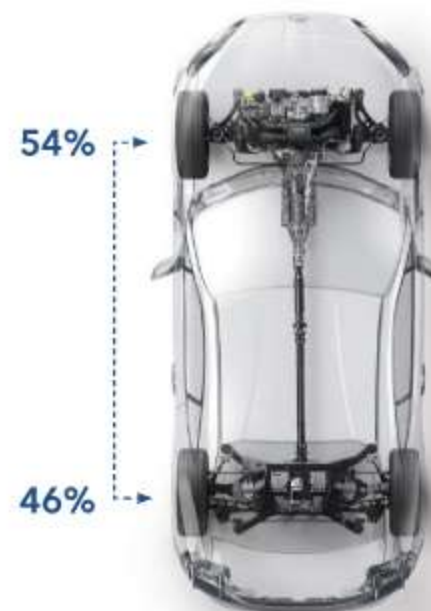




EMBRACE THE ROAD. GET CLOSER TO IT.

Low Centre of Gravity

A true all-out, great-looking sports car, the 2+2 BRZ is practical and accessible, too. With its optimally placed power plant, its handling conquers any winding mountain road or straightaway, anywhere you want to go. The result is nothing less than a thrill a minute. From roofline to seat positioning to the stunningly attractive car body, every engineering and safety advance (and there are many more) has created one of the lowest centres of gravity in any production vehicle on the road today. Get in, put it in gear (six-speed automatic or manual) and conquer the road.



Balance

50/50. It's a magic number for sports cars, symbolizing a theoretical vehicle with perfect weight distribution to the front and rear wheels. The Subaru BRZ comes very close with 54% of its weight over the front axle and 46% over the rear—the recipe for ideal handling performance.



PERFORMANCE COMES FROM WITHIN.

There's no denying the 2018 BRZ delivers driving enjoyment at any speed. That's because it was engineered from the ground up to have the kind of responsive, precise, balanced handling feel drivers dream of.



Sport Suspension

For performance driving, suspension is your connection to what matters most: the road. The suspension of the 2018 BRZ is dialed-in with spring rates, dampers, and stabilizers optimized for balanced, precise handling and comfortable overall ride quality.



Responsive Engine

Need to match revs for a downshift? No problem. The 205-horsepower¹ direct- and port-injected 2.0-litre, 4-cylinder SUBARU BOXER® engine is a driver's best friend, combining linear, usable power delivery, with high-RPM excitement.



Responsive Transmission

Get fully engaged with a close-ratio, 6-speed manual transmission with superb shift feel. Paddle shifters and downshift blipping control in the available 6-speed automatic transmission further enhance the sport experience with two distinct performance shift modes.²



TORSEN®³ Limited-slip Differential

With the same type of advanced TORSEN® limited-slip differential (LSD) as the high-performance WRX STI, the BRZ's LSD assures control in high-speed turns while enhancing confidence on rough roads.



SPORT-TECH RS—BRZ, AMPLIFIED.

For the discerning few who want a BRZ that can be pushed harder, with an even more responsive, track-day-ready driving experience, look no further than the BRZ Sport-tech RS.



10-spoke Alloy Wheels

The dark grey 17 x 7.5-inch, 10-spoke aluminum-alloy wheels are a perfect complement to the timeless looks and memorable performance of the BRZ.



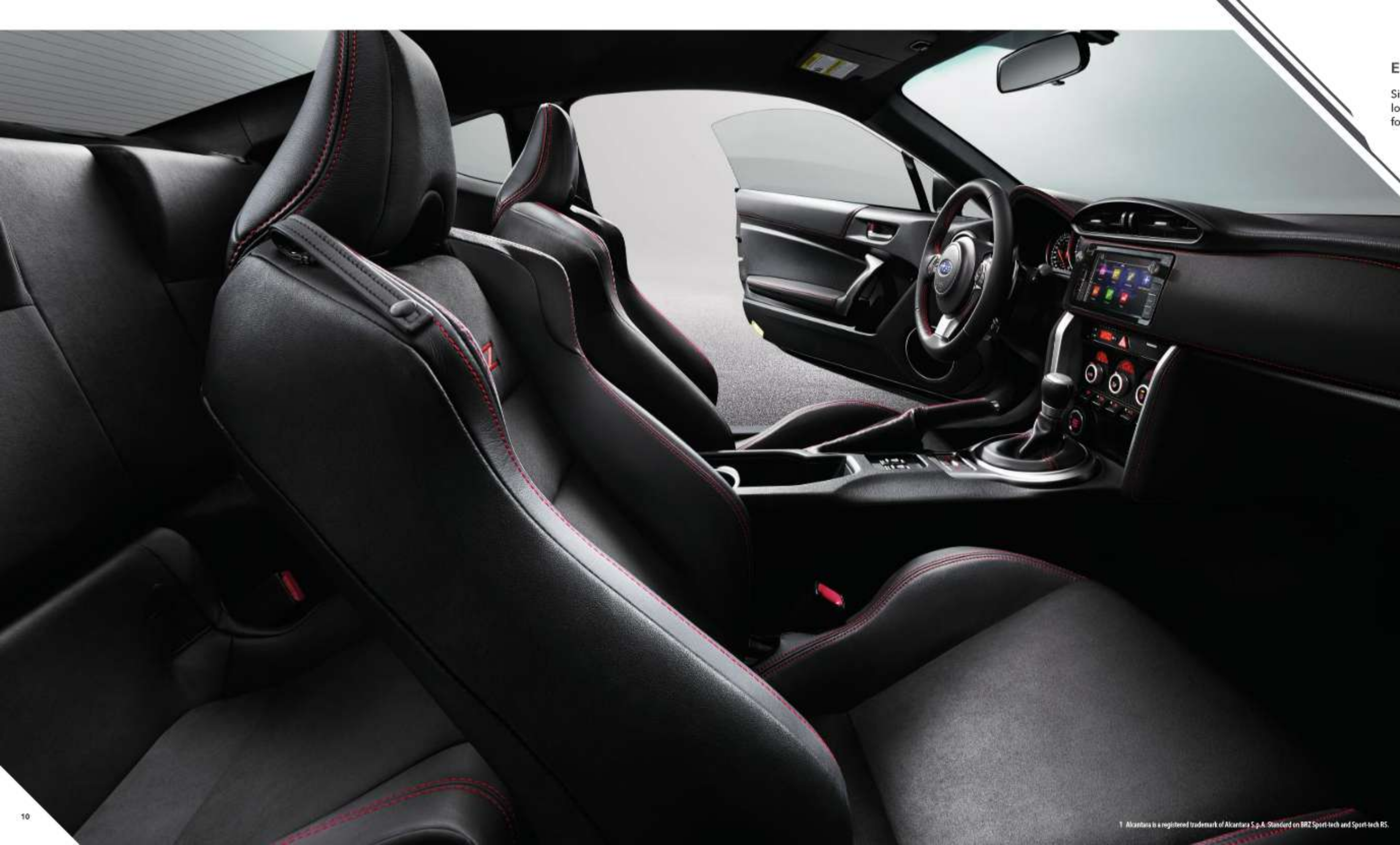
SACHS®¹ Performance Dampers

For a pure sports car like the BRZ, suspension is everything. SACHS® performance dampers give the Sport-tech RS more stability, better ride quality and more responsive handling.



Brembo®² Performance Brakes

Serious drivers know the importance of having powerful brakes that can withstand the rigours of performance driving. Brembo® performance brakes give the lightweight BRZ Sport-tech RS powerful, composed stopping power, corner after corner.



EVERY DRIVER'S HAPPY PLACE.

Sit in a Subaru BRZ, and feel it instantly. Performance lovers will intuitively understand an interior completely focused on the driver's ultimate connection and control.

Folding Rear Seatback

It's a pure sports car, of course. But fold the rear seatback down, and put in golf bags, diving gear, tennis rackets, racing tires—whatever inspires you.



Leather/Alcantara® Trim (Sport-tech, Sport-tech RS)

Performance-design front seats are available with premium leather trim and grippy Alcantara® inserts, featuring bolsters to help keep you in position while cornering. The seats also feature a low-profile design, complementing the low centre of gravity of the BRZ.

THE CENTRE OF CONNECTION.

Driver-centric ergonomics personalize every drive. With a steering wheel that fits comfortably in the palm of your hands and a conveniently placed short-throw shifter, you can take control of the Subaru BRZ with intuitive fluidity. The available Multi-information Display Meter includes a 4.2-inch colour TFT and sports car display, increasing the Subaru BRZ's sophistication as a sports car.¹

Connect to your world.

The new 7-inch touchscreen infotainment system with navigation gives the BRZ more connectivity options than ever before.² The SUBARU STARLINK™ system grants safe access to internet radio, apps and more. Standard Apple CarPlay™^{3,4} and Android™ Auto^{5,6} allow you to use today's most popular apps with ease, while voice recognition capabilities allow for hands-free use of system functions.



Engine Data Display

This displays the vehicle's engine performance curves, including torque and power curves.⁷



G-monitor Display

This exclusive Subaru BRZ screen shows a G-ball with peak hold, a steering angle gauge, braking force and throttle angle.⁷



Temperature Gauge Display

These gauges display engine coolant temperature, oil temperature and voltage.



Stop Watch Display

Keep track of your driving performance with the stop watch.



Trip Computer Display

This display allows you to monitor your average speed, trip time and trip distance.

¹ Not available on all trims. Please see retailer for details.
² Driver is always responsible for safe and attentive driving. Please refrain from operating the touchscreen while driving. Package communications fee may be charged depending on your area.
³ Compatible smartphones and applications required. Data provided by smartphone is displayed on the audio system screen. Some provinces prohibit the operation of handheld electronic devices while operating a vehicle. Smartphone apps should only be launched when vehicle is safely parked. Your wireless carrier's rates may apply.
⁴ Apple CarPlay is a trademark of Apple Inc., registered in the U.S. and other countries.
⁵ Android is a trademark of Google Inc.
⁶ Torque and power curves are not actual measurements and are based on preset values.
⁷ G-monitor can only be displayed when vehicle is stopped.

SUBARU CORE TECHNOLOGY

From conception, the BRZ was engineered as a symbol of sports car purity. Uniquely low and compact, the reliable SUBARU BOXER® engine was chosen as the foundation.

From there, the ideal sports coupe would come to fruition—one with a lightweight, balanced chassis and a component few driving purists would live without: rear-wheel drive.



Sports Car Drivetrain

Laid out symmetrically, the SUBARU BOXER® engine puts the crankshaft perfectly in line with the driveshaft for tremendous stability and dynamic agility. And the rear-wheel drive configuration allowed us to move the engine farther back and gives you precise control over your cornering attitude. We combined this agile platform with a quick-ratio steering system that's tuned to react with astounding precision and immediacy to your input.

Aerodynamics

Its fluid lines aren't just for looks. Thanks to advanced design, the Subaru BRZ is able to achieve a slippery coefficient of drag of just 0.27!



This 2.0-litre SUBARU BOXER® engine loves to be revved. With a high redline and over 100 hp per litre, you'll be sure there's plenty of power no matter what rpm you're at. You'll have less impact on the environment and more excitement at your disposal.

MANUAL TRANSMISSION

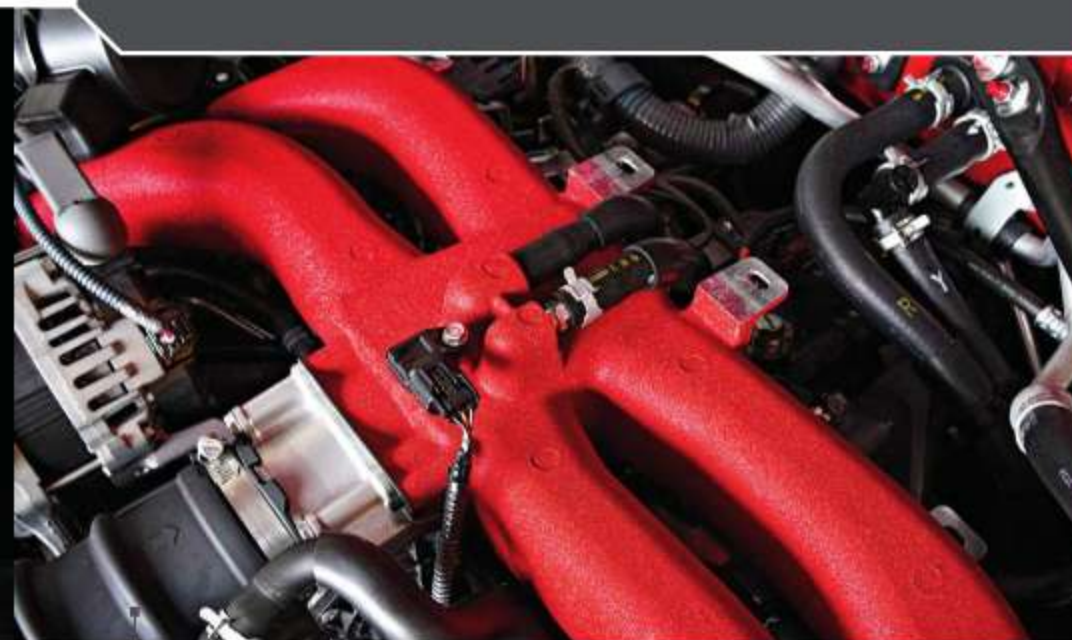
MAX OUTPUT:
205 hp @ 7,000 rpm

MAX TORQUE:
156 lb-ft @ 6,400–6,800 rpm

AUTOMATIC TRANSMISSION

MAX OUTPUT:
200 hp @ 7,000 rpm

MAX TORQUE:
151 lb-ft @ 6,400–6,600 rpm



The Classic SUBARU BOXER® Engine—Reimagined

It's in Subaru's soul, even its DNA. With up to 205 hp, the Subaru BRZ's 2.0-litre SUBARU BOXER® engine is the fast-beating heart inside the sleek sinuous body. Ingenious, thoughtful engineering brings it close to the driver, for the ultimate in weight balance and fine, exacting handling. With radical direct-and-port fuel injection technology, there's precise ignition for instant responsiveness and efficiency.

FLOOR IT, AND IT WILL FLOOR YOU.

Usable Power

Engage the six-speed transmission, and push it. Rev it. Smile. At any rpm, you've got the power, with the SUBARU BOXER® engine's horizontally opposed pistons, producing up to 205 peak horsepower. It's excitement in abundance, with less environmental impact—also a good thing. Let it move. Turn heads now and go!



Performance Suspension

A fully independent suspension brings out every bit of agility and responsiveness the Subaru BRZ has to offer. MacPherson-type front struts help maximize rigidity and a feeling of direct control by allowing the SUBARU BOXER® engine to be placed even lower in the chassis. And a double-wishbone design rear soaks up bumps without sacrificing control.

LIVE TO DRIVE ANOTHER DAY.

The excitement of performance can sometimes overshadow the details of safety, but we have given the Subaru BRZ an extensive protection system to show that your safety is always at the forefront of design. The capability of Vehicle

Stability Control helps keep you on your path, while safety continues to surround you and your passengers with the protection of airbags and ring-shaped reinforced framing—all to enhance every drive with confidence.

SRS¹ Airbags

Heightened control and visibility are elemental to the Subaru BRZ. However, you'll also have the confidence of knowing that, should something unfortunate happen, you have front, front-side and curtain SRS¹ airbags as standard equipment to help protect you from an impact.

Vehicle Stability Control

This advanced electronic system monitors an array of sensors—including braking, steering and yaw sensors—to help keep you from losing control as you push the Subaru BRZ to its limits.

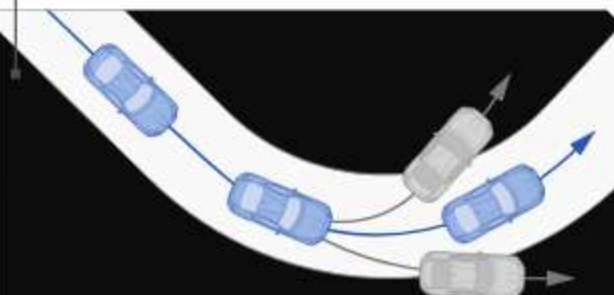


Lightweight Body

Simplicity in design and extensive use of high-tensile steel has helped reduce weight while making the chassis more rigid and precise. What's more, an aluminum hood further lightens the vehicle while bringing the centre of gravity even lower.

Ring-shaped Reinforcement Frame

The Subaru BRZ offers intense control and just as intense protection. Its frame design strengthens the passenger cabin from the roof to the doors, pillars and floor. This design, bolstered by generous use of high-tensile steel, helps to dissipate impact energy away from the occupants in a collision.

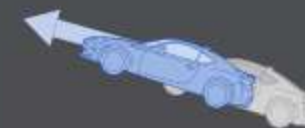


Check Surroundings Before Backing Up



Rearview Camera

The BRZ features a standard Rearview Camera that gives you a clearer view of the area behind your vehicle for extra visibility when you need it.



Hill Start Assist

Say goodbye to the "handbrake hill-start." To help you avoid rolling downhill when starting from a stop on steep hills or slopes, Hill Start Assist temporarily holds the car steady when the driver releases the brake pedal to press the accelerator pedal.

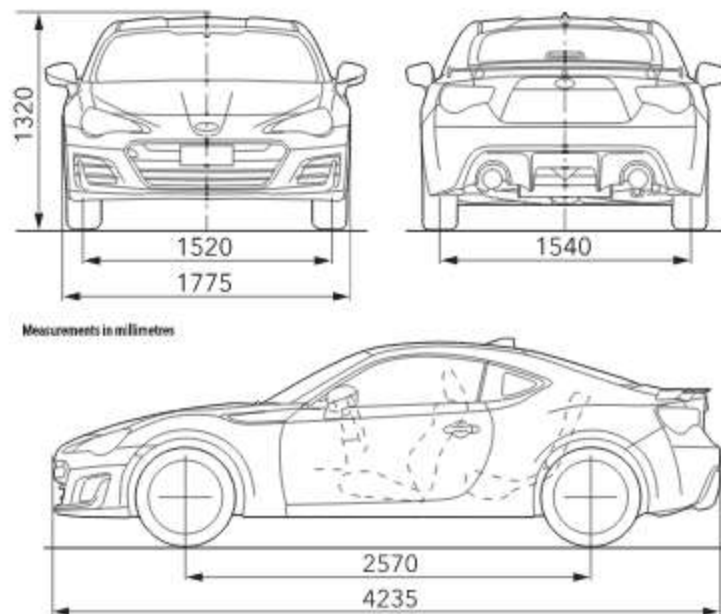
¹ SRS: Supplemental Restraint System. Effective when used in conjunction with seatbelts.

Fog Lights¹Brembo^{2,3} Performance Braking System

LED Headlights

Dual-zone Automatic Climate Control¹

7.0-inch Infotainment System with Navigation

Heated Front Seats¹

Chassis

Steering	BRZ, BRZ Sport-tech & BRZ Sport-tech RS Electric power-assisted quick ratio rack-and-pinion. Ratio: 13.1:1. Turning radius: 5.4 metres curb-to-curb.
Brakes	BRZ & BRZ Sport-tech 4-wheel disc, ventilated front and rear. 4-channel, dual-piston front and single-piston rear calipers. 4-sensor ABS with Electronic Brake-force Distribution (EBD). BRZ Sport-tech RS Brembo ² performance braking system. 4-wheel disc, ventilated front and rear. 4-channel, 4-piston front and 2-piston rear calipers. 4-sensor ABS with Electronic Brake-force Distribution (EBD).
Wheels	BRZ & BRZ Sport-tech 17 x 7.0-inch 10-spoke aluminum-alloy. Black with machine finish. BRZ Sport-tech RS 17 x 7.5-inch 10-spoke aluminum-alloy. Gunmetal grey finish.
Tires	BRZ, BRZ Sport-tech & BRZ Sport-tech RS 215/45 R17 Michelin ⁴ summer tires



BRZ

- 205-hp 2.0-litre 4-cylinder SUBARU BOXER⁵ engine
- Close-ratio 6-speed Manual Transmission (6MT)
- Performance-tuned suspension and ultra-low centre of gravity
- TORSEN⁵ limited-slip rear differential
- 17-inch aluminum-alloy wheels
- Rear spoiler
- LED headlights with automatic leveling
- Premium cloth upholstery
- Leather-wrapped steering wheel with integrated controls
- Heated side mirrors
- Rearview Camera
- Driver and front-seat passenger front and side-impact airbags; side-curtain airbags⁶
- 7.0-inch infotainment system with navigation: AM/FM audio system with high-resolution capacitive touchscreen display with GPS navigation system, Apple CarPlay⁷, Android⁸ Auto⁹, STARLINK¹⁰ smartphone integration (including Aha¹¹ radio); dual USB port/iPod¹² control, SMS text messaging capability, Bluetooth¹³ mobile phone connectivity with voice activation and Bluetooth¹³ streaming audio¹¹ and SiriusXM¹⁴ Satellite Radio¹³ with Advanced Audio Features, SiriusXM¹⁴ Traffic¹¹ and Travel Link¹⁴ (Optional Services)



BRZ Sport-tech

- 200-hp 2.0-litre 4-cylinder SUBARU BOXER⁵ engine
- 6-speed Automatic Transmission (6AT) with manual-mode paddle shifters and rev-matching downshift control
- Performance-tuned suspension and ultra-low centre of gravity
- TORSEN⁵ limited-slip rear differential
- 17-inch aluminum-alloy wheels
- Rear spoiler
- LED headlights with automatic leveling
- Alcantara¹¹ and leather-trimmed upholstery
- Leather-wrapped steering wheel with integrated controls
- Heated, sport-type front seats
- Heated side mirrors
- Performance instrument cluster with multifunction display featuring G-force metre, lap timer, performance gauges and more
- Dual-zone automatic climate control
- LED fog lights
- Proximity Key with Push-button Start
- Rearview Camera
- Driver and front-seat passenger front and side-impact airbags; side-curtain airbags⁶
- 7.0-inch infotainment system with navigation: AM/FM audio system with high-resolution capacitive touchscreen display with GPS navigation system, Apple CarPlay⁷, Android⁸ Auto⁹, STARLINK¹⁰ smartphone integration (including Aha¹¹ radio); dual USB port/iPod¹² control, SMS text messaging capability, Bluetooth¹³ mobile phone connectivity with voice activation and Bluetooth¹³ streaming audio¹¹ and SiriusXM¹⁴ Satellite Radio¹³ with Advanced Audio Features, SiriusXM¹⁴ Traffic¹¹ and Travel Link¹⁴ (Optional Services)



BRZ Sport-tech RS

Includes BRZ Sport-tech key features and adds/upgrades:

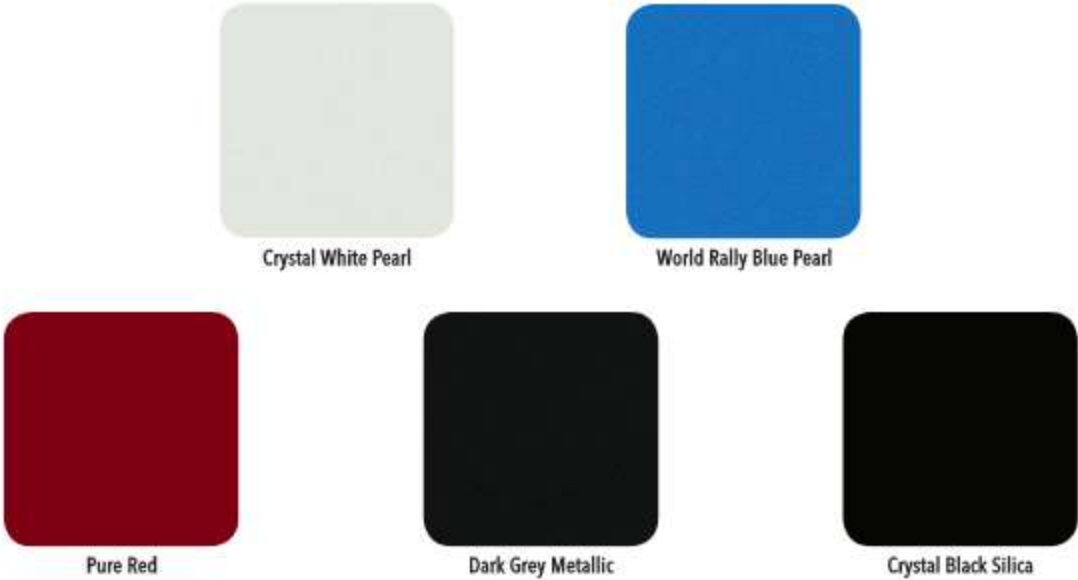
- 205-hp 2.0-litre 4-cylinder SUBARU BOXER⁵ engine
- Close-ratio 6-speed Manual Transmission (6MT)
- Brembo² performance braking system with 4-piston front and 2-piston rear calipers
- SACHS¹¹ performance dampers
- Wider 17-inch aluminum-alloy wheels with gunmetal grey finish



The biggest SUBARU page in the world

¹ Standard on BRZ Sport-tech and Sport-tech RS trims. ² Brembo is a registered trademark of Brembo S.p.A. ³ Standard on BRZ Sport-tech RS. ⁴ Michelin is a registered trademark of Michelin North America, Inc. ⁵ TORSEN is a registered trademark of JTEKT Corporation. ⁶ The Supplemental Restraint System (SRS) (airbags) affords the driver and the front passenger additional protection in moderate to severe frontal and side-impact collisions and outboard 2nd-row passengers additional protection in moderate to severe side-impact collisions. This system provides supplemental protection only, and seatbelts must be worn in order to avoid injuries to out-of-position occupants upon airbag deployment and to provide the best combined protection in a serious accident. Children should always be properly restrained in one of the rear seats. See Owner's Manual for recommended seating position. ⁷ Apple CarPlay is a trademark of Apple Inc., registered in the U.S. and other countries. ⁸ Android is a trademark of Google Inc. ⁹ Compatible smartphone and applications required. Data provided by smartphone is displayed on navigation screen. Some providers prohibit the operation of handheld electronic devices while operating a vehicle. Smartphone apps should only be launched when vehicle is safely parked. Aha is a trademark of Harman International Industries, Inc. Your wireless carrier's rates may apply. ¹⁰ Apple, iPhone, iPod and iTunes are registered trademarks of Apple Inc. ¹¹ Bluetooth is a registered trademark of Bluetooth SIG, Inc., America. ¹² Subscription required. ¹³ Alcantara is a registered trademark of Alcantara S.p.A. ¹⁴ SACHS is a registered trademark of ZF Sachs AG Corporation.

Paint



Upholstery



Colour Combinations	BRZ	BRZ Sport-tech	BRZ Sport-tech RS
Crystal White Pearl	BC	BL	BL
World Rally Blue Pearl	BC	BL	BL
Pure Red	BC	BL	BL
Dark Grey Metallic	BC	BL	BL
Crystal Black Silica	BC	BL	BL



Subaru Warranties

Every Subaru vehicle is designed and built to offer our customers the highest possible level of quality and reliability. We are proud of our vehicles and proud to stand behind them with a comprehensive warranty. For 2018 model year vehicles, the warranty on all Subaru vehicles consists of the following:

New Vehicle Limited Warranty (36 month/60,000 km) – Covers basic and major components for 36 months or 60,000 km.

Major Component Limited Warranty (60 month/100,000 km) – Extends coverage of major components (more than just powertrain) up to 60 months or 100,000 km.

Surface Corrosion Limited Warranty (36 month/60,000 km) – Covers surface corrosion to visible painted body panels for 36 months or 60,000 km.

Anti-Perforation Limited Warranty (60 month/unlimited km) – Covers perforation due to corrosion to body sheet metal panels for 60 months, regardless of kilometres.

Emission Control System Limited Warranty – Covers some emissions components for 36 months or 60,000 km and the major parts of the emission control system for 96 months or 130,000 km.

Parts and Accessories Limited Warranty – Covers Subaru parts and accessories installed by the retailer prior to retail delivery of the vehicle for 36 months or 60,000 km, and Subaru parts and accessories installed by the retailer after the retail delivery of the vehicle for 12 months or 20,000 km from the date of the installation.

The above information is an overview of warranty coverage and is not a warranty statement. If you wish to see more details regarding Subaru warranties, please refer to your Subaru warranty booklet, contact your local retailer or visit our Web site at subaru.ca.

Subaru 360 C.A.R.E. Program (36 months/unlimited km)

Access to dedicated Subaru 360 C.A.R.E. (Customer Assistance for Roadside Emergencies) Roadside Assistance Services, which includes access to 1,000 CAA and AAA offices throughout Canada and the United States. In addition to towing, coverage also includes Fuel Delivery, Battery Boost, Flat Tire Service, Lock-Out Service, Trip Accident & Mechanical Breakdown Assistance Service, Winching and Extrication Service, Personalized Trip Planning and Routing, Theft and Hit-and-Run Reward, and Arrest Bond Certificate.

The above information is an overview of services. If you wish to see more details regarding Subaru 360 C.A.R.E., please visit our Web site at subaru.ca.

Subaru Protection Plan

As a Subaru owner, you have expectations for a pleasurable, trouble-free ownership experience – now and into the future. Once your 36-month/60,000-km New Vehicle Limited Warranty period ends,¹ our Subaru Protection Plan (SPP) – the only vehicle service contract endorsed by Subaru Canada for Subaru vehicles – can prolong your hassle-free ownership experience with three levels of extended service contract coverage tailored to your needs: Powertrain Protection; Major Protection; or Complete Protection (best level of coverage to complement the 60-month/100,000-km Major Component Limited Warranty). SPP offers comprehensive mechanical and electrical coverage and a number of additional features and benefits, such as Roadside Assistance and Alternate Transportation, for up to 7 years or 160,000 kilometres from your vehicle's in-service date. Whether your vehicle is purchased or leased, SPP protects you and your investment. Be sure to ask your retailer for details or visit subaru.ca.

¹ If you already own a Subaru vehicle and it is still within the 36-month/60,000-km New Vehicle Limited Warranty period, you are still eligible for SPP.

Subaru vehicles are uniquely designed to get out there more and to leave less behind. We build our vehicles for maximum longevity because more time spent on the road equals less time spent in junkyards and landfills. Fully 98% of our vehicles sold in Canada over the last 10 years are still on the road today.¹ You'll also find very little waste created in the production of a Subaru—many of our vehicles are built in the Subaru of Indiana Automotive, Inc., (SIA) factory, which was the first manufacturing facility in the U.S. to achieve zero-landfill status. Other Subaru facilities around the world now achieve similar goals in helping to preserve the environment. Respect for our surroundings is yet another way that Subaru vehicles help to build driver confidence for the road ahead.

¹ Based on IHS Markit Automotive Canadian Vehicles in Operation data as of June 30, 2016, for model years 2007–2017. Actual longevity of any car will vary based upon operating conditions.



The biggest SUBARU page in the world



www.subaru.ca

For a detailed list of specifications, features, accessories and model comparisons, please visit Subaru.ca or your nearest authorized Subaru Dealer.

The Supplemental Restraint System (SRS airbags) affords the driver and passenger additional protection in some collisions. This system provides supplemental protection only, and seatbelts must be worn in order to avoid injuries to out-of-position occupants upon airbag deployment. The combination of SRS and seatbelts provides the best protection in a serious accident. All illustrations, specifications, features and photographs contained in this brochure are based on product information available at the time of its printing, and may not be completely accurate following its publication. Colours shown may vary due to reproduction variations in the printing process, and some vehicle parts cannot be shown in certain photographs. Subaru Canada, Inc. reserves the right to discontinue or make changes at any time, without notice or incurring obligations, to colours, materials, equipment, accessories, features, specifications and models, or to change their prices. Some models shown may be from international markets and are not available in Canada, or they may be shown with equipment or accessories that are optional (at extra cost) or only available in certain combinations, or they may be subject to product delays or not be available in Canada. Please visit subaru.ca for the latest information and specifications. For complete details on product updates and warranties, please contact your Subaru retailer. BRZ, Impreza, Outback, Legacy, Forester, WRX, STI, Crosstrek, Lineartronic, Subaru and SUBARU BOXER are registered trademarks of SUBARU CORPORATION. Confidence in Motion and STARLINK are trademarks of SUBARU CORPORATION. Aha is a trademark of Harman International Industries, Inc. Harman Kardon is a registered trademark of Harman International Industries, Inc. Android is a trademark of Google Inc. Apple, iPod and Siri are registered trademarks of Apple Inc. Apple CarPlay is a trademark of Apple Inc. Bluetooth is a registered trademark of Bluetooth SIG, Inc., America. HomeLink is a registered trademark of Gentex Corporation. TomTom is a registered trademark of TomTom International B.V. "SiriusXM", "Sirius", "XM", "SiriusXM Traffic", "SiriusXM Travel Link" and the SiriusXM logo, channel names and logos are trademarks of Sirius XM Radio Inc. and are used under licence by Sirius XM Canada Inc. Subscriptions to SiriusXM Canada are subject to the SiriusXM Canada Customer Agreement and other terms and conditions. Printed in Canada. © 2017 Subaru Canada, Inc. 2018 model year.



Environmental Management System (EMS) ISO 14001:2004 certified by SGS

This booklet was printed on FSC® certified paper and contains 55% recycled fibre. It is chlorine-free, recyclable and biodegradable. FSC® (Forest Stewardship Council®) is an international organization that brings people together to find solutions that promote responsible management of the world's forests. This booklet was also produced using a "GREEN" printing process, which includes vegetable-based inks that leave no harmful residue. Please recycle.

