

LEVORG



SUBARU

Confidence in Motion



Made by perfectionists, for multitaskers.

That moment when you've reached excellence in life—it feels great. And it feels even better when you're achieving highly in multiple areas. Some call it perfectionism; others consider it living life to the fullest. For those who continually strive to be better at everything, the Levorg was created.



Innovation made stylish.

There's a place where design and technology intersect, where form and function stand on equal ground. The Levorg exists in this sweet spot, blending useful functionality with eye-pleasing aesthetics wherever you look.



DESIGN

The Levorg makes its intentions clear with the hexagonal grille and muscular front end design with a fully functional hood-scoop that keeps the turbocharged SUBARU BOXER engine's intercooler constantly refreshed with cool air.



ILLUMINATION

The "Hawkeye" headlamps evoke images of the raptor, or bird of prey. Powered by LEDs, the headlamps have enough brightness to back up their aggressive style, providing all the illumination you'll need.



Performance
that transcends.

Design that rises above.



Designed for the world you live in.

And everything you'll
accomplish in it.



Imagine the possibilities.

The Levorg is a vehicle built for people with full lives, always living life to the fullest. That's why it's versatile enough for all the activities, passions, sports and interests that you live for, with ample cargo space and flexibility for your endeavours.



60/40 FOLDING REAR SEATS

For bulkier or odd-shaped items such as golf bags or skis, the 60/40 folding rear seats can adapt accordingly.



WIDER OPENING FOR EASIER ACCESS

It's easy to move items in and out of the voluminous cargo area of the Levorg, thanks to its rear door. When fully extended, users have wide open access to the Levorg's storage space.



*1 Cargo room floor length (with five occupants in vehicle)

*2 Cargo room floor width (between wheel housings)

*3 Cargo room height (directly behind rear seats)

Your world.

Your space.

Think of it as less of an “interior” and more of “your personal space.” No different than an office, home, or any other space where you’ll spend a lot of your time, the Levorg interior keeps you blissfully content with materials that are soft to the touch and supportive, with quality that allows it to endure the test of time. It’s a place of taste and class—a reflection of your own sensibilities.

SEATING DESIGN

The engaging driving experience of the Levorg is accentuated by front seats that support drivers and passengers in all the right places, helping maintain a balance of both comfort and control for a safer, more enjoyable driving experience.



D-SHAPED STEERING WHEEL

There’s a reason so much thought went into it—the steering wheel is your main connection to the driving experience. Beyond the sporty, D-shaped design, the steering wheel of the Levorg is easily gripped and manipulated, thanks to its sculpted shape and grip-worthy feel.





Always stay in touch.

The Levorg simplifies the driving experience by integrating your life into the vehicle seamlessly so you can stay entertained, informed, and connected, without losing sight of the most important thing—getting there and back safe and sound.



VOICE RECOGNITION*¹ AND SIRI EYES FREE**^{2*3}

Your Levorg has more hands-free options than ever before, thanks to intuitive Voice Recognition*¹ and Siri Eyes Free**^{2*3} integration. Use Siri to link your compatible Apple*³ product to your Levorg, allowing you to make hands-free calls, play music, check emails and search the web. Even without Siri, you can still have hands-free interaction with navigation, telephone, and audio systems for added ease in every drive.



MULTIFUNCTION DISPLAY

Positioned to be clearly visible with minimal distraction as you drive, this display shows you a variety of information that puts you in touch with your vehicle.



TOUCHSCREEN CONTROL

Using the touchscreen is an easy way to select your music, just as you would on your smartphone. Simply connect your smartphone through Bluetooth**⁴ or the USB port, and you can choose your music right on the touchscreen.

1. PADDLE SHIFTERS

For a more engaging experience, drivers can switch to manual mode and use the paddle shifters to experience the kind of responsive six-speed manual shifting you wouldn't expect from a Continuously Variable Transmission, allowing drivers to enjoy the delight of sports driving.



2. SI-DRIVE

SUBARU Intelligent Drive (SI-DRIVE) allows a selection of engine and transmission characteristics according to the driver's driving style, driving expectations, and driving situations. It offers two distinctive functions: Intelligent and Sport. Intelligent mode provides smoother acceleration and more efficient operation, whilst Sport mode offers a more exciting driving experience, with enhanced power and acceleration.



SUBARU STARLINK*⁵

Like a built-in smartphone for your car, having the SUBARU STARLINK*⁵ infotainment system lets you access internet radio, entertaining apps, and much more. Control it with the tabletlike 7-inch centre touchscreen, multifunction steering wheel controls, or one-shot voice recognition*¹. If you can't find your favourite music, connect your iPhone*³, smartphone or other mobile music device via the USB or standard AUX jack.

*¹ Voice Recognition is compatible with select languages only and cannot accept all languages.
 **² Siri-compatible Apple product (iPhone, iPad, iPod touch, etc.) required.
 *³ Apple, App Store, iPod, Siri, and iTunes are registered trademarks of Apple Inc.
 *⁴ Bluetooth is a registered trademark of Bluetooth SIG, Inc. America.
 *⁵ Driver is always responsible for safe and attentive driving. Please refrain from operating the touchscreen whilst driving. Package communications fee may be charged depending on your area.

SUBARU CORE
TECHNOLOGY

SUBARU BOXER
ENGINE:

BALANCED AND COMPOSED.

The horizontally opposed configuration of the SUBARU BOXER engine places the pistons 180 degrees apart, for a lower, flatter profile than other engine types. This gives the engine, and therefore the overall vehicle, a lower centre of gravity and better sense of balance.

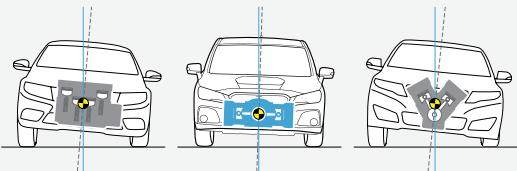


* Fuel consumption and CO₂ emissions: According to EC715/2007-2015/45W.



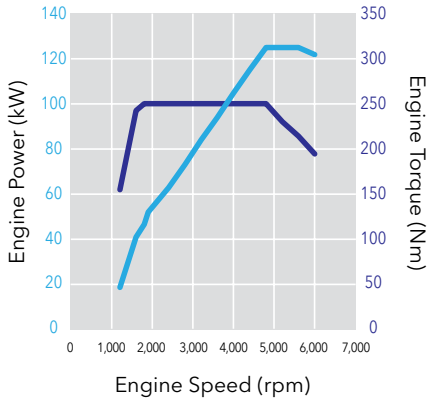
NATURALLY BALANCED

Unlike traditional “in-line” or “V-type” engine configurations, the pistons’ opposing movements inherently counteract each other, naturally helping to reduce vibration without the need for counter-balancers, which add weight and complexity.



LOW CENTRE OF GRAVITY

All of the heavy moving components inside a horizontally opposed engine—the connecting rods, pistons, camshafts and valve train—are positioned on a horizontal plane, as low as possible. This gives SUBARU vehicles a distinctly lower centre of gravity versus vehicles with “inline” and “v” configured engines, resulting in numerous handling and performance benefits.



1.6-LITRE DOHC DIRECT
INJECTION TURBO
SUBARU BOXER ENGINE

MAX OUTPUT:
125 kW (170 PS) / 4,800-5,600 rpm

MAX TORQUE:
250 Nm (25.5 kgfm) / 1,800-4,800 rpm

FUEL CONSUMPTION*:
6.9 lit./100km (1.6GT),
7.1 lit./100km (1.6GT-S)

CO₂ EMISSIONS*:
159 g/km (1.6GT),
164 g/km (1.6GT-S)

SYMMETRICAL
ALL-WHEEL DRIVE:

FOUR POINTS OF CONTACT.

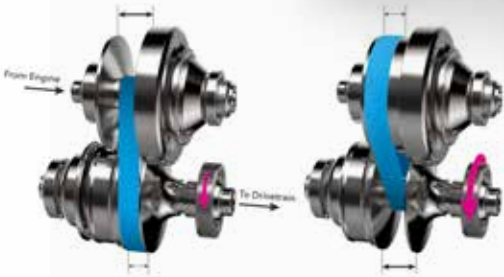
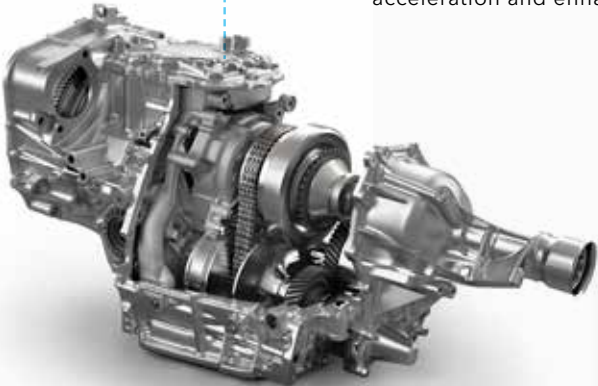
TRACTION IN ALL CONDITIONS.

There’s a reason Symmetrical All-Wheel Drive system is respected around the world. When road conditions are demanding, it delivers control and composure where other vehicles stumble by evenly distributing power to all four wheels. The benefits are immediately apparent— more controlled cornering, better traction in slippery conditions, and enhanced acceleration. The overall sensation is that driving becomes an easier, safer and more enjoyable affair.

LINEARTRONIC CVT:

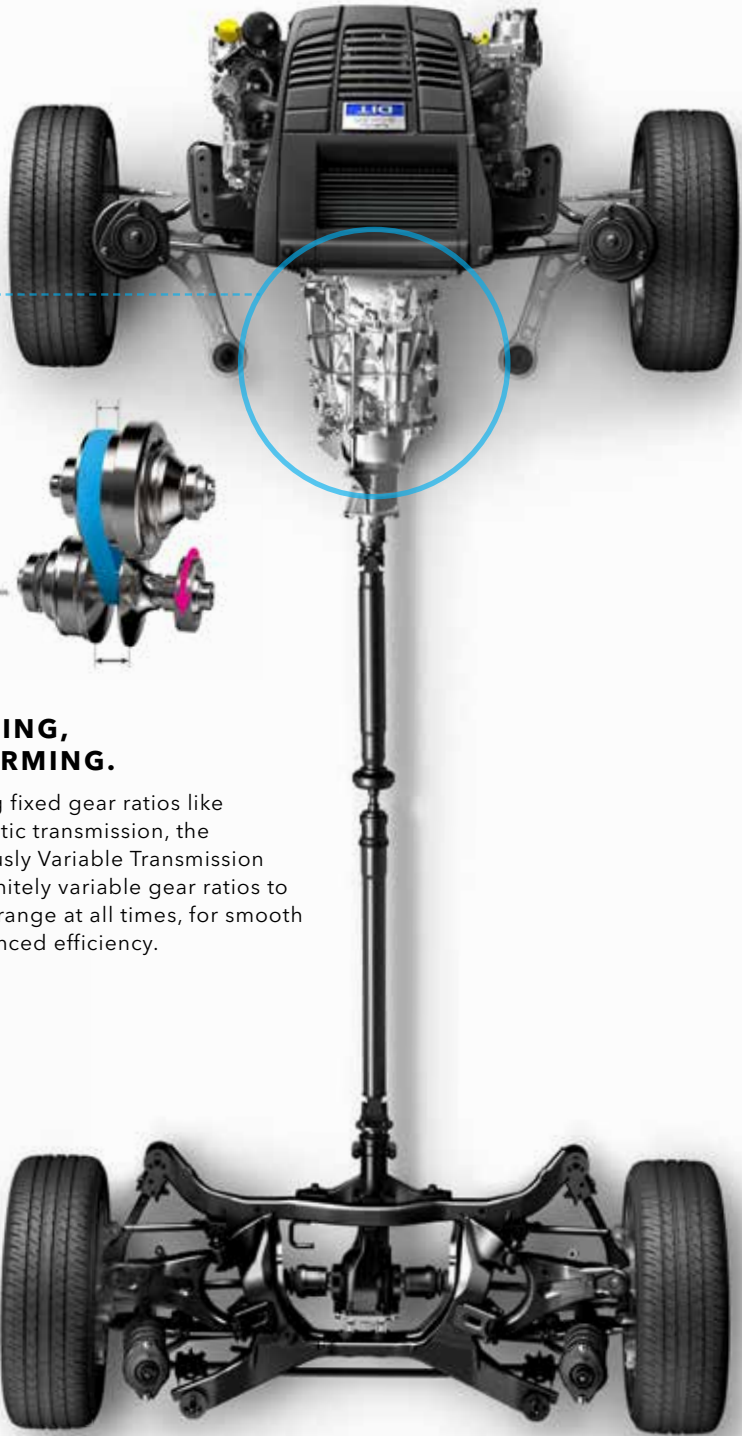
SHIFT YOUR EXPECTATIONS.

A passenger car with All-Wheel Drive—it was a totally new concept when SUBARU introduced it to the world. Afterwards, public perception of AWD technology changed forever. The trend continues with the latest Lineartronic CVT found in the Levorg. Responsive and lightweight, this transmission rejects the status quo with unexpected precision and liveliness.



ALWAYS ADAPTING,
ALWAYS PERFORMING.

Unburdened by having fixed gear ratios like a conventional automatic transmission, the Lineartronic Continuously Variable Transmission of the Levorg uses infinitely variable gear ratios to stay in the correct rev-range at all times, for smooth acceleration and enhanced efficiency.





01 VEHICLE DYNAMICS CONTROL SYSTEM

Vehicle Dynamics Control System monitors and analyses if the vehicle is following the driver's intended course via an array of sensors. If a tyre slips or a high speed turns the vehicle off its intended path, the AWD torque distribution, engine output, and brakes at each wheel are adjusted to assist in keeping the vehicle on course.

02 VISIBILITY IN ALL DIRECTIONS

The most important collision avoidance system inside any Subaru is the driver. That's why the Levorg was designed to provide maximum visibility in all directions without compromising structural integrity and safety. More visibility helps the driver stay in control and see potential accidents before they happen.

03 BRAKES

The 4-wheel disc brakes feature lightweight aluminum rear calipers for a strong, progressive braking feel. The Antilock Braking System includes electronic brake-force distribution to reapportion front and rear braking pressure when the vehicle is loaded. For more predictable and controlled braking during an emergency, the Levorg features both Brake Assist and Brake Override.

04 ADVANCED SAFETY PACKAGE: HIGH BEAM ASSIST (HBA)*1

High Beam Assist increases visibility and safety when driving at night by toggling the Levorg's high beams on and off automatically, depending on driving conditions.

05 ADVANCED SAFETY PACKAGE: SUBARU REAR VEHICLE DETECTION (SRVD)*1

Subaru Rear Vehicle Detection (SRVD) uses sensors placed around the vehicle to alert you of vehicles in your rear blind spots for safer lane changes, and can also warn you of potential collision danger, whilst driving in reverse into a street with cross traffic.

ACTIVE SAFETY

06 CABIN-PROTECTING LAYOUT

Subaru has a tradition of going above and beyond when it comes to your safety, and the Levorg is no different. Achieving excellence in safety requires outside-the-box thinking, and that's why the Levorg's frame and chassis were designed to help the SUBARU BOXER engine and gearbox move safely beneath the vehicle during a head-on collision rather than intruding into the cabin. It's yet another feature that gives you peace of mind whilst driving Levorg.

07 SRS*2 AIRBAGS

In case of a collision, occupants are protected with an arsenal of standard safety equipment including front SRS*2 airbags, plus front-side, curtain SRS*2 airbags, and knee SRS*2 airbags. To hold passengers firmly in place, the front seatbelts feature height-adjustable pretensioners, and also load limiters that ease peak forces to the chest. In a rear collision, front seats utilise rigid frames, firm headrests, and such details as energy-absorbing mounting of the inner seat springs, all to help reduce the chance of whiplash.

08 HEAD RESTRAINTS ON FRONT SEATS

Adjustable for both height and angle, head restraints are designed to accommodate passengers of different sizes and comfort preferences.

09 WHIPLASH-MITIGATING FRONT SEATS

Designed to enhance comfort and help the driver feel more planted for more control, these seats can also help reduce the possibility of whiplash resulting from certain types of collisions.

10 RING-SHAPED REINFORCEMENT FRAME

The Ring-shaped Reinforcement Frame is like a suit of armor for all occupants of the Levorg. It's a shroud of safety built into the passenger cabin's roof, doors, pillars, and floor. This design helps divert and dissipate impact energy away from the occupants in a collision by use of high-strength materials and strategic placements. Whilst making it stronger with increased torsional rigidity, the overall frame is still lightweight.

PASSIVE SAFETY

*1 The driver is always responsible for safe and attentive driving and observance of traffic regulations. Please do not depend solely on the Advanced Safety Package features for safe driving. There are limitations to the recognition features of this system. See Owner's Manual for complete details on system operation and limitations. Please ask your retailer for more details.

*2 SRS: Supplemental Restraint System. Effective when used in conjunction with seatbelts.

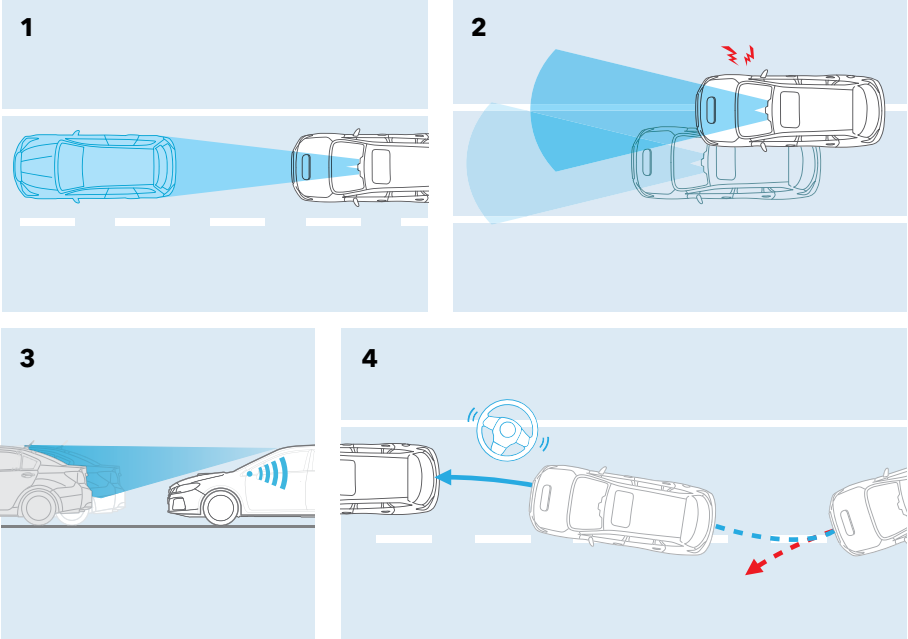


SUBARU'S WORLD-LEADING DRIVER ASSIST TECHNOLOGY



At Subaru, we believe in ALL-AROUND SAFETY and an important part of that is pre-crash safety, making sincere efforts to ensure an accident never happens. That's why we created EyeSight*¹, Subaru's cutting-edge driving support system. Like a second pair of eyes for the road ahead, EyeSight uses two stereo cameras capturing three-dimensional colour images with excellent image recognition, nearly as capable as the human eye. Using images from both cameras to precisely determine the shape, speed and distance, it not only detects vehicles, but also motorbikes, bicycles and pedestrians.*² When spotting potential danger, it warns the driver and even applies the brakes if necessary, to help avoid an accident. With improved safety performance like this, EyeSight reduces the burden on the driver and enhances your sense of security in the Levorg.

DRIVER ASSIST



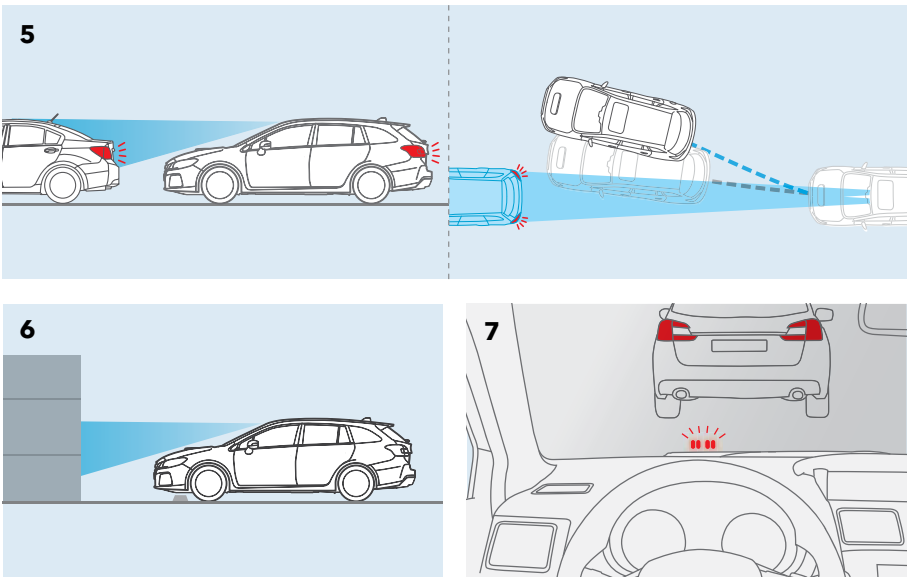
1. Adaptive Cruise Control
EyeSight*¹ doesn't only maintain the speed the driver sets as traditional cruise control does. When it senses a vehicle in front, Adaptive Cruise Control adjusts the speed to keep a set distance from the lead vehicle by monitoring the distance and the difference of the speed. It adjusts the engine, transmission and brake to keep your speed in line with the traffic flow in a wide range approximately from 0km/h to 180km/h. Designed for use on freeways, highways and similar roads, Adaptive Cruise Control actually detects a lead vehicle and its brake lamps and can help keep pace in stop-and-go highway traffic for you, a comfort and convenience on long drives.

2. Lane Sway and Departure Warning
When you are distracted by fatigue and are wandering or drifting in a lane, Lane Sway Warning helps you stay alert with a buzzer and a flashing indicator. However, Lane Sway Warning only activates at speeds of approximately 60 km/h or more. When travelling at speeds of approximately 50 km/h or more and you accidentally drift to the edge of your lane and begin to depart your lane without signaling, Lane Departure Warning warns you with a buzzer and a flashing indicator before you leave your lane.

3. Lead Vehicle Start Alert
When you're at a stop and EyeSight senses that traffic has started moving again, Lead Vehicle Start Alert prompts the driver to take action with a buzzer and a flashing indicator.

4. Lane Keep Assist
Whilst driving on freeways, highways and similar roads, Lane Keep Assist can monitor lane markings with a stereo camera and detects when the vehicle begins to move out of its lane. At speeds of approximately 65 km/h or more, it can assist with steering wheel operation to help prevent lane departure to support safe driving.

ACCIDENT PREVENTION



5. Pre-Collision Braking System*²
When it senses an impending collision with a vehicle or other obstacle in front, the Pre-CollisionBraking System can warn the driver with a buzzer and a light on your dash. If the driver still does not take evasive action to avoid the collision, the system can automatically apply the brakes to reduce any impact, or if possible, prevent the collision as well. If the driver takes evasive action to avoid a collision, Pre-CollisionBrake Assist can act to aide the driver in preventing the collision.Also, Pre-Collision Steering Assist helps drivers make a sharp turn to avoid a collision when it spots a potential frontal impact.

6. Pre-Collision Throttle Management
When EyeSight sees an obstacle in front of you and you put the vehicle in drive instead of reverse, Pre-Collision Throttle Management sounds several short beeps, turns on a flashing indicator and cuts the engine output to help you avoid a frontal collision.

7. EyeSight Assist Monitor*³
A display that links the operating status of EyeSight and warnings is projected onto the windscreen in a simplified way using LEDs to reduce driver eye movements.

*¹ EyeSight is a driving support system which may not operate optimally under all driving conditions. The driver is always responsible for safe and attentive driving and observance of traffic regulations. System effectiveness depends on many factors such as vehicle maintenance, weather and road conditions. See Owner's Manual for complete details on system operation and limitations for EyeSight including functions in this brochure.

*² Pre-Collision Braking System may not work in all situations. Depending on the speed difference from objects, the object's height and other conditions, every situation may not meet the necessary conditions for EyeSight to work optimally.
*³ Optional; part of the Advanced Safety Package.

Field of vision range from EyeSight (Not an actual measurement).

LEVORG 1.6GT-S



DIMENSIONS.....	L x W x H: 4,690 x 1,780 x 1,490 mm
ENGINE.....	Horizontally-opposed, 4-cylinder, turbocharged DOHC
CAPACITY.....	1,600 cc
MAX OUTPUT.....	125 kW (170 PS) / 4,800 - 5,600 rpm
MAX TORQUE.....	250 Nm (25.5 kgfm) / 1,800 - 4,800 rpm
TRANSMISSION.....	Lineartronic, AWD



LEVORG 1.6GT



DIMENSIONS.....	L x W x H: 4,690 x 1,780 x 1,485 mm
ENGINE.....	Horizontally-opposed, 4-cylinder, turbocharged DOHC
CAPACITY.....	1,600 cc
MAX OUTPUT.....	125 kW (170 PS) / 4,800 - 5,600 rpm
MAX TORQUE.....	250 Nm (25.5 kgfm) / 1,800 - 4,800 rpm
TRANSMISSION.....	Lineartronic, AWD



EXTERIOR COLOURS



CRYSTAL WHITE PEARL



ICE SILVER METALLIC



LAPIS BLUE PEARL



STEEL BLUE GREY METALLIC



PURE RED



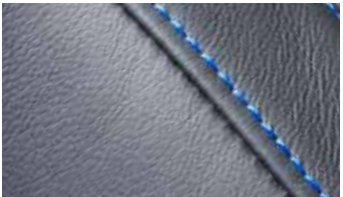
DARK GREY METALLIC



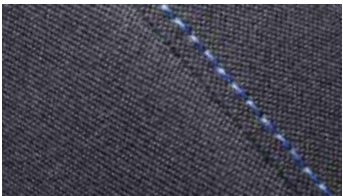
CRYSTAL BLACK SILICA

SEAT MATERIAL

1.6GT-S



Black Leather with Blue Stitching*

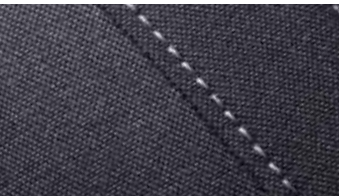


Black Fabric with Blue Stitching

1.6GT



Black Leather with Silver Stitching*



Black Fabric with Silver Stitching

* Optional
Owing to printing locations, colours may differ slightly from those shown in this chart. In addition, colours and seat variations may vary according to the individual market.



01

POP-UP TYPE HEADLAMP WASHERS

Pop-up washers use a high-pressure spray to help keep the available LED headlamps at their peak performance in poor weather.

02

18-INCH ALUMINIUM-ALLOY WHEELS

Available 18-inch alloy wheels give the Levorg even more style.

03

KEYLESS ACCESS WITH PUSH-BUTTON START SYSTEM*

With the key fob in your possession, you can unlock the front doors or tailgate by just gripping the handle and starting the engine with a push of a button. Even without your key fob, a 5-digit PIN code can unlock the doors.

04

POWER-SLIDING TILT-ADJUSTABLE GLASS SUNROOF*

The large, internally-sliding sunroof with a manual sunshade delivers a panoramic view and fresh breezes for front and rear passengers.



05

05

LED REAR COMBINATION LAMPS

The Levorg maintains both style and visibility with LED rear combination lamps, which feature LED tail and stop lamps, rear fog lamps, turn lamps and reverse lamps.

06

TWIN TAIL MUFFLERS

The twin tail mufflers on either side of the blacked-out under section leave no doubt of the sporty nature of the Levorg.

07

TILT-ADJUSTABLE / TELESCOPIC STEERING WHEEL

Dial in your driving experience with the tilt-adjustable and telescopic steering wheel, which can accommodate a wide range of preferences.

08

DUAL-ZONE AUTOMATIC AIR-CONDITIONING SYSTEM

This feature conveniently helps keep the temperature inside where you want it. It also allows the driver and front passenger to set different temperatures.



09

REAR VISION CAMERA*

When the driver shifts into reverse, the camera displays a live colour image on the in-dash display, along with guidelines to assist in parking manoeuvres.

10

SEAT HEATER*

For extra-cold days, the Levorg features adjustable heated seats for both driver and front-passenger seats.

11

USB POWER OUTLET (FRONT AND REAR)

Keep all your electronic devices fully charged and ready to use with easily accessed USB power outlets for both front and rear passengers.

12

REAR SEAT ARMREST WITH CUPHOLDER

Enjoy front-row comfort in the second row with the rear seat armrest, which folds down for extra comfort.

* Optional

LEVORG ACCESSORIES

PERSONALISE YOUR RIDE.

Whilst every Levorg comes generously equipped, Subaru accessories are the perfect way to tailor your Subaru to your life and your style. Whether you want to add convenience, enhance functionality, or personalise your Levorg's appearance, Subaru accessories are designed to provide the same fit and quality as your Subaru vehicle. For more details, ask for the accessory brochure or visit your nearest Subaru dealer.



STI Front Under Spoiler



STI Side Under Spoiler



STI Rear Under Spoiler



Tailgate Illumination



Tow Bar Detachable



Cargo Step Panel (Resin)



Carpet Mat Premium (LHD/RHD)



Cargo Tray Low



SUBARU DIGITAL EXPERIENCE



SUBARU INTERACTIVE EXPERIENCE

To help you explore all things Subaru, we offer various digital materials with a wide range of exciting, interactive content such as 360-views and videos.

eBrochure

Experience the Subaru dynamic eBrochure for more details, including videos, photos and more.

subaru-global.com/ebrochure



SUBARU
Confidence in Motion

Web Homepage

Visit our global homepage for complete information and news about Subaru and our vehicles.

subaru-global.com



YouTube

Subscribe to our channel to see all the latest videos and join the conversation about Subaru.

youtube.com/user/SubaruGlobalTV



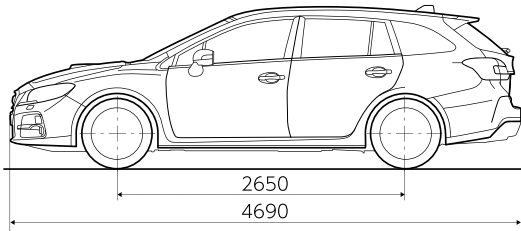
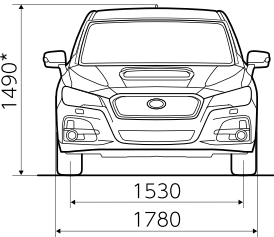
Facebook

Stay connected to our diverse Subaru community, and be the first to hear the latest news directly from Subaru.

facebook.com/SUBARU.GLOBAL

DIMENSIONS

LEVORG



* The 1.6 GT model has a height of 1,485 mm.

Dimensions are measured in accordance with standard measurement of Fuji Heavy Industries Ltd.

Fuji Heavy Industries Ltd. reserves the right to alter specifications and equipment without notice. Details of specifications, equipment, colour availability and the accessory lineup are subject to suit local conditions and requirements. Please inquire at your local dealer for details of any changes that might be required for your area.

Not all features, options, or packages are available for all models and regions. See your specification sheet for availability. Please contact your local authorised Subaru dealer for more details.



FUJI HEAVY INDUSTRIES LTD.

subaru-global.com

Printed in Belgium (17GTWENEC-01)

