

# SUBARU BRZ



**SUBARU**

*Confidence in Motion*





## A PURIFIED CONNECTION.

You know what you want to feel the instant you sit in. You know the thrill of having a deeper connection to your car in every twist or turn. Subaru knows, too. We've taken the poise and power of the SUBARU BOXER engine and engineered a pure sports car with the handling and response to deliver that thrill the first time you lay eyes on it and every day after.

"The BRZ is a new affordable driver's car of amazing delicacy and extraordinary talent."

Autocar

"The BRZ is just what we hoped it would be: a car that sucks you in and rewards your trust and confidence, a car with charisma and attitude. The BRZ is anti-fashion, pro-driving and 100 percent Subaru."

TopGear Magazine



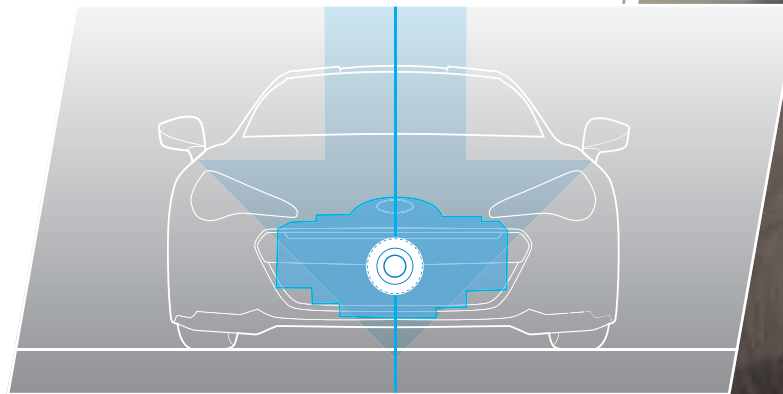
INTENSIFY YOUR RELATIONSHIP.





## THE HARMONY OF UNITY.

The foundation of the astonishing handling characteristics of the SUBARU BRZ comes from its rigid chassis. The intelligent design allows the SUBARU BOXER engine to sit lower – and thanks to its lightweight and balanced chassis, this creates a lower centre of gravity that further promotes excellent manoeuvrability and stability for a driving experience that is truly personal.



### **Low Centre of Gravity**

We challenged ourselves to give the SUBARU BRZ as low a centre of gravity as possible, because that means the most exciting handling possible. Every element of the car, from the flat, horizontally-opposed engine design to the roofline to the seat positioning, helps give the SUBARU BRZ one of the lowest centres of gravity of any mainstream vehicle available.







## EMBRACE EVERY CURVE.

The sculpted proportions of the SUBARU BRZ not only draw attention but are also designed to harness the wind. Around every corner, its slippery silhouette seems to glide through the air as it conceals the combination of lightweight material used to form the SUBARU BRZ. The subtle aerodynamic advantages, along with its overall weight further contribute to the nimble and direct handling response.



### **Aerodynamic Bodywork**

Its fluid lines aren't just for looks. Thanks to advanced design, the SUBARU BRZ is able to achieve a slippery coefficient of drag of just 0.27\*.

\*Value is a measurement of the vehicle equipped with aero package option in accordance with standard measurement of Fuji Heavy Industries Ltd.





## TWO HEARTS. ONE PASSION.

With a press of the pedal, feel the focus that was put into the SUBARU BRZ to bring out the most of every curve in the road. And to make that possible is the SUBARU BOXER engine. The horizontally-opposed pistons inherently combine balance with power and efficiency. Quickly reach the 7,400 rpm redline and instantly experience a drive that is both engaging and exhilarating.



DESIGNED TO MOVE YOU.







## ALWAYS STAY CONNECTED.

The excitement of performance can sometimes overshadow the details of safety but we have given the SUBARU BRZ an extensive protection system to show that your safety is always at the forefront of design. The capability of Vehicle Stability Control helps keep you on your path whilst safety continues to surround you and your passengers with the protection of airbags and ring-shaped reinforced framing. All to enhance every drive with confidence.



## THE CENTRE OF CONNECTION.

Driver-centric ergonomics personalise every drive. With a steering wheel that fits perfectly in the palm of your hands and an optimally placed short-throw shifter, you can take control of the SUBARU BRZ with intuitive fluidity. And with sport-design instrumentation, you'll immediately get the information you need most.

### **Responsive Transmission**

A 6-speed manual transmission helps you get fully engaged with driving, thanks to a short stroke and superb shift feel. The available 6-speed automatic features paddle shifters, downshift blipping control, and two distinct shift modes for performance that always suits your mood.



### **Sport Tachometer**

Designed with the enthusiast in mind, the large, centrally located tach with digital speedometer gives you the vital information you need for performance driving.







## WHERE PASSIONS UNITE.

The minute you sit in a SUBARU BRZ, you'll feel it. Every performance enthusiast will intuitively understand the way the interior is focused on ultimate driver connection and control. And whilst the deep bolsters and Alcantara®\*1 inserts give you excellent support during high-performance driving, the folding rear seats allow you to carry more to do more.

### **Leather/Alcantara®\*1 Trim\*2**

Available with premium leather trim and grippy Alcantara®\*1 inserts, performance-design front seats help you keep your position whilst cornering. They also feature a lowered seating position to bring the vehicle's centre of gravity down even further.



### **Folding Rear Seats**

You wouldn't expect this much utility from a pure sports car, but with the rear seats folded, there's enough room for a set of racing tyres or two golf bags.

\*1 Alcantara is a registered trademark of Alcantara S.p.A. \*2 Available on BRZ SE Lux models.





Sports Car Drivetrain

Laid out symmetrically, the SUBARU BOXER engine puts the crankshaft perfectly in line with the driveshaft for tremendous stability and dynamic agility. And the rear-wheel drive configuration allowed us to move the engine further back and gives you precise control over your cornering attitude. We combined this agile platform with a newly designed quick-ratio steering system that's tuned to react with astounding precision and immediacy to your input.

Performance Suspension



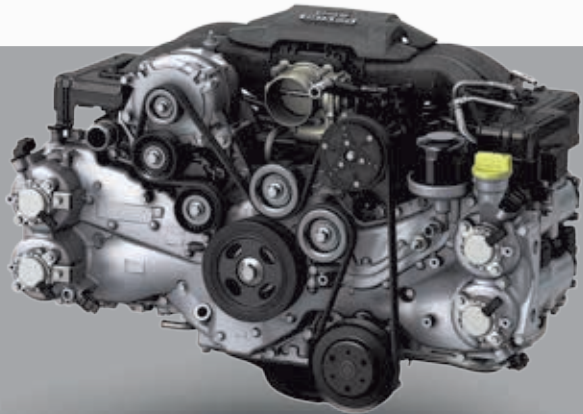
A fully independent suspension brings out every bit of agility and responsiveness that the SUBARU BRZ has to offer. MacPherson type front struts help maximise rigidity and a feeling of direct control by allowing the SUBARU BOXER engine to be placed even lower in the chassis. And a double wishbone rear design soaks up bumps without sacrificing control.

Torsen\* LSD



WRX STI Torsen LSD shown.

Exhilarating precision in every corner – that's what sets a SUBARU BRZ apart. An advanced Torsen limited-slip differential – the same type of LSD found in the high performance WRX STI – helps you stay on your line during a high-speed turn whilst enhancing your comfort and control on rough roads.

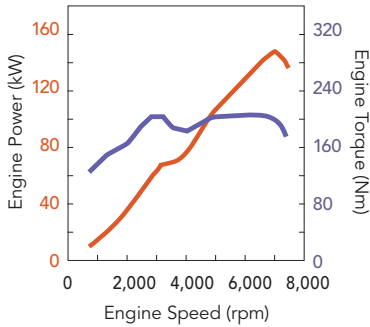


SUBARU BOXER Engine

The SUBARU BOXER engine powers the SUBARU BRZ to new heights of precision and excitement. We've placed this 2.0-litre engine lower, made it more compact and moved it closer to the driver. It's the first engine of its kind to feature direct and port fuel injection technology, which enhances both its responsiveness and fuel efficiency. It's a one-of-a-kind design that offers a new kind of satisfaction.

Power Output

This 200 PS engine loves to be revved. With a high redline, a flat torque curve and 100 PS per litre, you'll be sure there's plenty of power no matter what rpm you're at. You'll have less impact on the environment, and more excitement at your disposal.



MAX OUTPUT:  
200 PS / 7,000 rpm

MAX TORQUE:  
205 Nm / 6,400 – 6,600 rpm

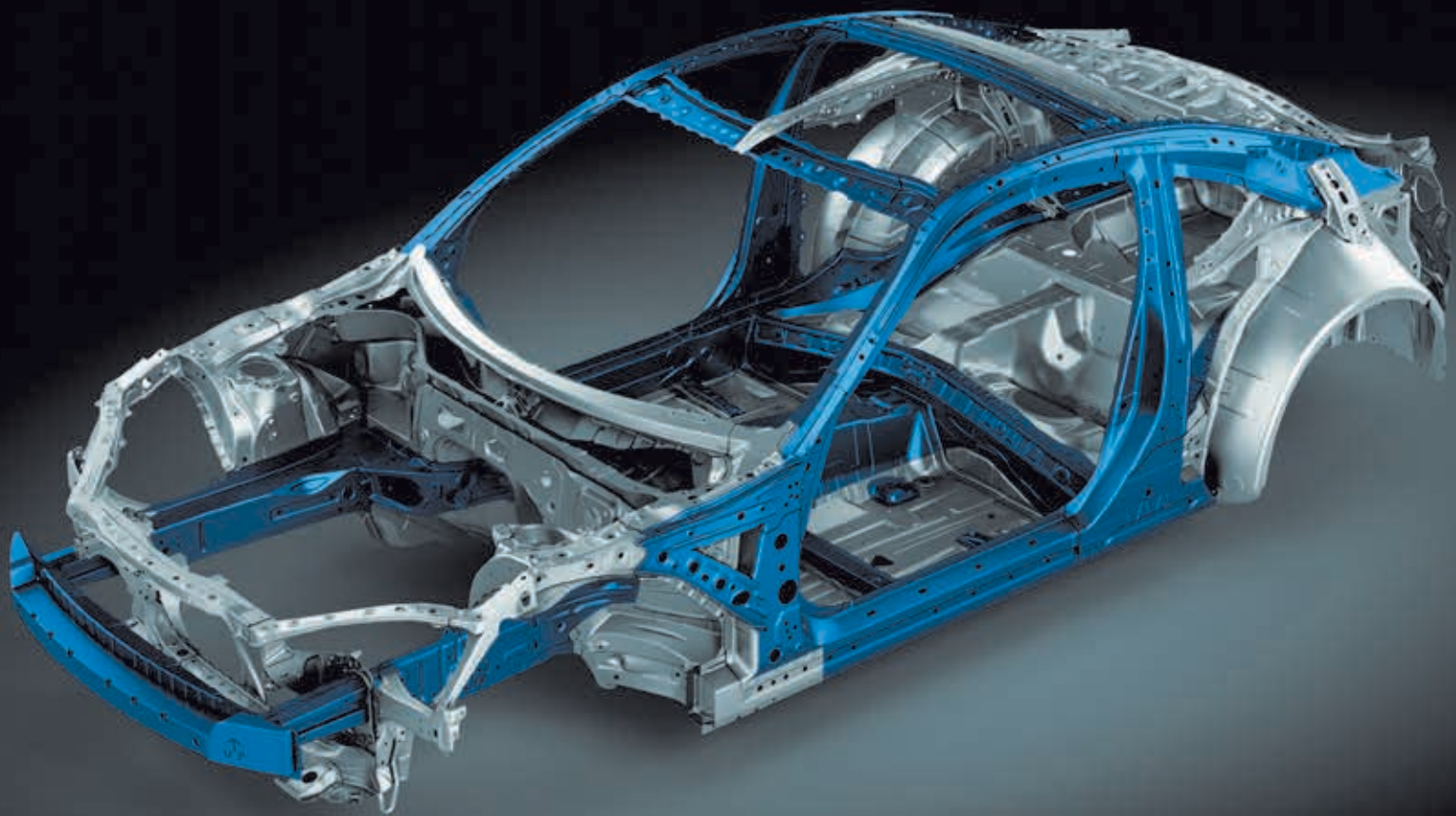
FUEL ECONOMY (BRZ SE/SE Lux):  
36.2 mpg (6MT), 39.8 mpg (6AT)

CO<sub>2</sub> EMISSIONS (BRZ SE/SE Lux):  
180 g/km\* (6MT), 164 g/km\* (6AT)

\*Fuel consumption and CO<sub>2</sub> emissions: according to EC715/2007-EC195/2013J.  
MPG figures are EU test figures for comparative purposes and may not reflect real driving results.

\*Torsen is a registered trademark of JTEKT Corporation.





**Ring-shaped Reinforcement Frames**

The SUBARU BRZ offers intense control and just as intense protection. Its frame design strengthens the passenger cabin from the roof to the doors, pillars and floor. This design, bolstered by generous use of high-tensile steel, helps to dissipate impact energy away from the occupants in a collision.

**Lightweight Body**

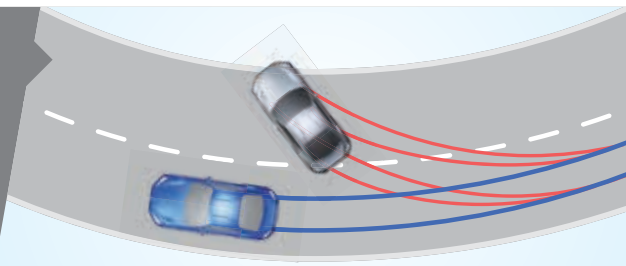
Simplicity in design and extensive use of high-tensile steel has helped reduce weight whilst making the chassis more rigid and precise. What's more, an aluminium bonnet further lightens the vehicle, whilst bringing the centre of gravity even lower.

**High Visibility**

A car that's a thrill to drive should also inspire confidence. Clever interior design gives you exceptional views from all angles – helping you have a greater command of your surroundings.

**Vehicle Stability Control**

This advanced electronic system monitors an array of sensors – including braking, steering and yaw sensors – to help keep you from losing control as you push the SUBARU BRZ to its limits.



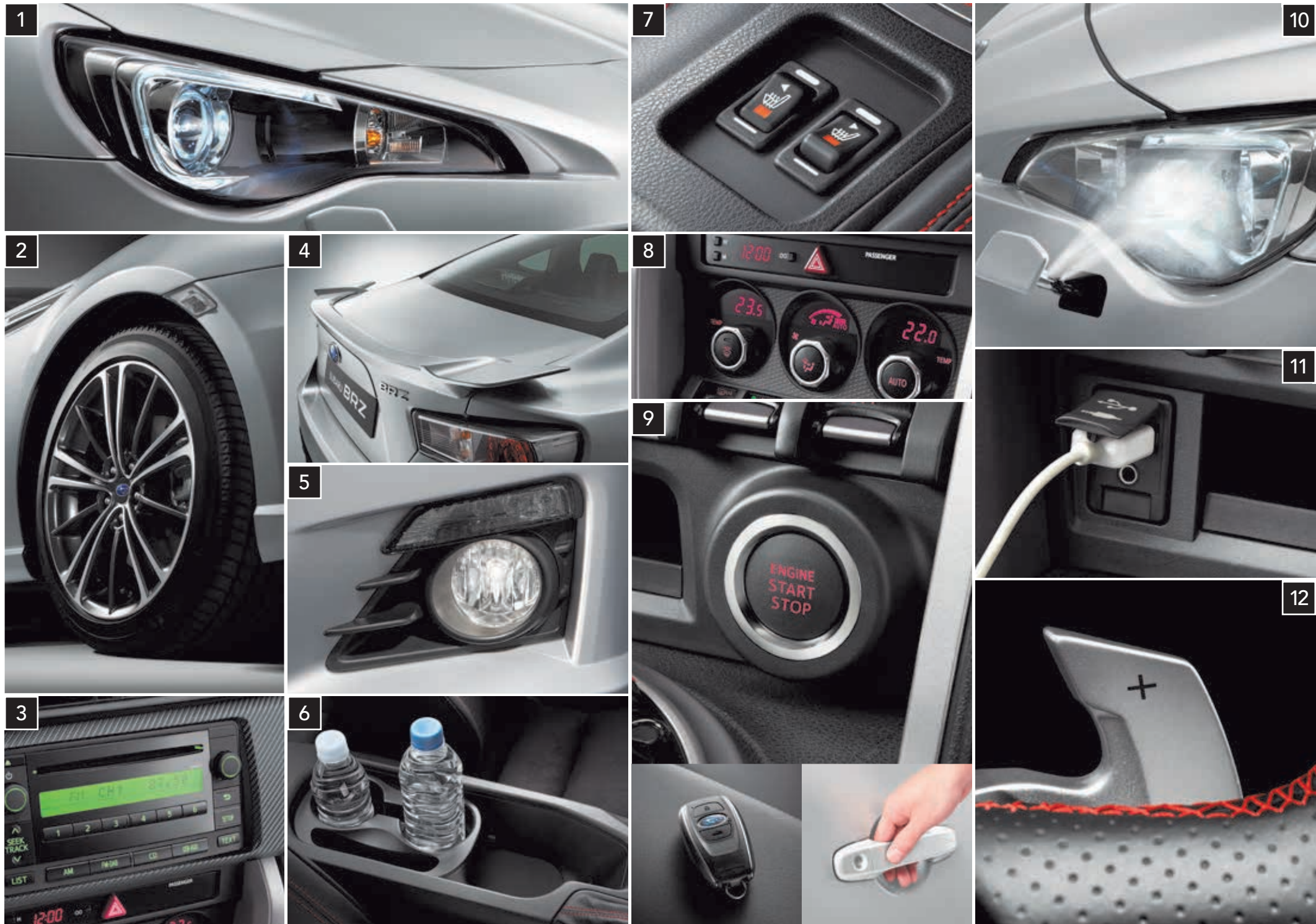
**SRS\* Airbags**

Heightened control and visibility are elemental to the SUBARU BRZ. However, you'll also have the confidence of knowing that, should something unfortunate happen, you have front SRS\* airbags, front-side and curtain SRS\* airbags as standard equipment to help protect you from an impact. Also, the SUBARU BRZ comes standard with a knee SRS\* airbag, which helps protect the lower extremities of the driver.



\*SRS: Supplemental Restraint System. Must be used in conjunction with seatbelts.





**1 HID Headlamp**

The thrilling design of the SUBARU BRZ is heightened with the brilliant clarity of HID headlamps.

**2 17-inch Aluminium Alloy Wheels**

As lightweight as they are distinctive, every SUBARU BRZ comes with aluminium alloy wheels that reduce unsprung weight and sharpen your style.

**3 6-speaker Audio System\*1**

This powerful audio system brings your music to life. You'll have a variety of input options, including CD, USB and an auxiliary jack.

**4 Rear Spoiler**

The rear spoiler adds a sporty touch and will make the SUBARU BRZ even friendlier with the wind.

**5 Fog Lamps**

Multi-reflector fog lamps emit a wide, flat beam that reflects less glare in fog, for added safety.

**6 Two Front Cup Holders**

Flexible storage for 2 cups or bottles, it can be moved back and forth or removed to create a larger storage space.

**7 Heated Front Seats\*2**

Counteracting cold days, available heated front seats offer two settings, for rapid heating or soothing warmth.

**8 Dual-zone Automatic Air-conditioning**

This advanced climate control system allows the passenger and driver to set different temperatures depending on their personal preference.

**9 Keyless Access with Push Button Start**

Start your SUBARU BRZ without removing your key from your pocket or purse.

**10 Headlamp Washers**

Pop-up type washers use a high-pressure spray to help keep the headlamps performing in poor weather.

**11 USB and Auxiliary Audio Input Jack**

Plug in a USB-enabled device to play your music through the car's audio system or use the 3.5 mm audio jack with just about any portable music player.

**12 Paddle Shifters**

Standard with automatic transmission models, they allow you to execute crisp shifts with your fingertips.

\*1 DAB Radio not available in the UK. \*2 SE Lux only.



SUBARU BRZ SE and SE Lux

DIMENSIONS..... L x W x H: 4,240 x 1,775 x 1,320 mm\*1  
ENGINE..... Horizontally-opposed, 4-cylinder,  
DOHC 16-valve petrol  
CAPACITY..... 1,998 cc  
MAX OUTPUT..... 200 PS (147 kW) / 7,000 rpm  
MAX TORQUE..... 205 Nm (20.9 kgfm) / 6,400–6,600 rpm  
TRANSMISSION..... 6-speed manual transmission or  
6-speed automatic transmission, RWD



SE Lux Interior



SE Interior



Side Fin Blade [E7110CA000]



Fuel Lid Garnish [J1210CA800]



Rear Under Diffuser (E5610CA000)

SUBARU **BRZ**  
SPECIFICATION | STANDARD FEATURES  
EXTERIOR COLOUR

\*1 Value is a measurement, including the height of radio antenna. The height to the roof is 1,285 mm.  
Fuji Heavy Industries Ltd. reserves the right to alter specifications and equipment without notice. Details of specifications, equipment, colour availability and the accessory lineup are subject to suit local conditions and requirements. Please enquire at your local dealer for details of any changes that might be required for your area.



SPECIFICATIONS

Item			Rear-Wheel Drive	
			SUBARU BRZ SE/SE LUX	
			6MT	6AT
ENGINE				
Type		Horizontally-opposed, 4-cylinder, 4-stroke, petrol engine		
		DOHC 16-valve		
Bore/Stroke	mm	86/86		
Capacity	cc	1,998		
Compression ratio		12.5		
Fuel system		Direct and port fuel injection		
Fuel tank capacity	lit.	50		
PERFORMANCE				
Max. output (DIN)		PS @ rpm	200 @ 7,000	
Max. torque (DIN)		Nm @ rpm	205 @ 6,400-6,600	
Max. speed		mph	140 (in 6th gear)	130 (in 5th gear)
Acceleration (0-100 km/h)		sec.	7.6	8.2
Fuel consumption*1	Urban	mpg	27.2	29.4
	Extra-urban	mpg	44.1	49.6
	Combined	mpg	36.2	39.8
CO <sub>2</sub> emissions*1		g/km	180	164
DIMENSIONS & WEIGHT				
Overall length		mm	4,240	
Overall width (excluding mirrors)		mm	1,775	
Overall height*2		mm	1,320	
Wheelbase		mm	2,570	
Track	Front	mm	1,520	
	Rear	mm	1,540	
Ground clearance (at kerb weight)		mm	120	130
Boot volume*3		lit.	243	
Seating capacity		persons	4	
Kerb weight		kg	1,230	1,253
TRANS-AXLE				
Gear ratio	1st		3.626	3.538
	2nd		2.188	2.060
	3rd		1.541	1.404
	4th		1.213	1.000
	5th		1.000	0.713
	6th		0.767	0.582
	Reverse		3.437	3.168
Final drive axle ratio			4.100	4.100
CHASSIS				
Steering		Rack and pinion, electric power steering system		
Suspension (4-wheel independent)	Front	MacPherson strut type		
	Rear	Double wishbone type		
Minimum turning circle at tyre (radius)		m	5.4	
Brakes	Front	16" Ventilated disc brakes		
	Rear	15" Ventilated disc brakes		
Tyre/wheel size		215/45R17, 17 x 7" J		

\*1 Fuel consumption and CO<sub>2</sub> emissions: according to EC715/2007-566/2011. \*2 Value is a measurement including the height of the radio antenna. The height to roof is 1,285 mm. \*3 Measured by VDA. Vehicle kerb weight varies according to the types of optional equipment included. Specification data and model lineup may vary according to market. MPG figures are EU test figures for comparative purposes and may not reflect real driving results.

STANDARD AND OPTIONAL FEATURES

Item	BRZ SE		BRZ SE Lux	
	6MT	6AT	6MT	6AT
EXTERIOR				
Auto on/off headlamps	●	●	●	●
HID headlamps with auto levelling	●	●	●	●
Pop-up type headlamp washers	●	●	●	●
Front fog lamps	●	●	●	●
Rear fog lamp	●	●	●	●
Power-folding door mirrors	●	●	●	●
UV protection glass: Front and rear side windows, rear quarter and rear window	●	●	●	●
Variable intermittent windshield wipers	●	●	●	●
17-inch aluminium alloy wheels	●	●	●	●
Engine, transmission and floor under cover	●	●	●	●
Fender garnish	●	●	●	●
Rear spoiler	●	●	●	●
Rear diffuser	●	●	●	●
Shark-fin antenna	●	●	●	●
Twin tail muffler cutter	●	●	●	●
SEATING / TRIMS				
Leather wrapped steering wheel with red stitching	●	●	●	●
Leather wrapped gearshift knob and hand brake lever	●	●	●	●
Sporty front seats (Fabric)	●	●	–	–
Sporty front seats (Leather and Alcantara®*1)	–	–	●	●
6-way manual adjustable driver's seat	●	●	●	●
Front seat heaters	–	–	●	●
Side sill cover (Stainless)	●	●	●	●
Rear passenger's seat	●	●	●	●
Easy entry function	●	●	●	●
Walk-in function (Front passenger's seat)	●	●	●	●
Seat back pocket (Front passenger seat)	●	●	●	●
COMFORT / CONVENIENCE				
Power windows*2	●	●	●	●
Remote control key system	●	●	●	●
Keyless access and push button start system	●	●	●	●
Map lamps	●	●	●	●
Boot room lamp	●	●	●	●
Vanity mirrors with lids (for driver and front passenger)	●	●	●	●
Centre tray	●	●	●	●
2 front cup holders (in the centre console)	●	●	●	●
Door pockets with bottle holders (on all side doors)	●	●	●	●
Boot opener	●	●	●	●
Interior fuel lid lock release	●	●	●	●
Two 12-volt power outlets (centre console and glove box)	●	●	●	●
Box sub-trunk (under cargo storage)	●	●	●	●
Tyre repair kit	●	●	●	●

Item	BRZ SE		BRZ SE Lux	
	6MT	6AT	6MT	6AT
CLIMATE CONTROL				
Dual-zone automatic air-conditioning system with anti-dust filter	●	●	●	●
Heated door mirrors	●	●	●	●
Front and side defrosters	●	●	●	●
Electric rear window defogger with timer	●	●	●	●
AUDIO & NAVIGATION				
2-DIN audio system: 1-CD with 6-speakers	●	●	●	●
USB and auxiliary audio input jack (in the centre panel)	●	●	●	●
Pioneer SatNav and multimedia system with Bluetooth®*3	OPT	OPT	OPT	OPT
CONTROL / INSTRUMENTS				
Digital speed meter	●	●	●	●
Tilt-adjustable/telescopic steering wheel	●	●	●	●
Paddle shift	–	●	–	●
Quick ratio power steering	●	●	●	●
Multi-Information display*4	●	●	●	●
Driver-set rev indicator	●	●	●	●
Cruise control	●	●	●	●
Aluminium pedals	●	●	●	●
DRIVABILITY				
Vehicle Stability Control	●	●	●	●
SPORT and SNOW mode function	–	●	–	●
Torsen LSD (Limited Slip Differential)*5	●	●	●	●
SAFETY				
Front SRS*6 airbags	●	●	●	●
Front side SRS*6 airbags (for driver and front passenger)	●	●	●	●
Curtain SRS*6 airbags	●	●	●	●
Knee SRS*6 airbag	●	●	●	●
Side-door reinforcement beams	●	●	●	●
Steering column support beam	●	●	●	●
Whiplash reducing front seats	●	●	●	●
Seatbelt indicator	●	●	●	●
Front seatbelts with pretensioners and load limiters	●	●	●	●
Rear 3-point seatbelts for 2 seating positions	●	●	●	●
4-sensor/4-channel ABS	●	●	●	●
Brake assist system	●	●	●	●
ISO-FIX adapted child seat anchors (with tether anchors)	●	●	●	●
Anti-theft security system with engine immobiliser	●	●	●	●

\*1 Alcantara® is a registered trademark of Alcantara S.p.A.  
\*2 Driver's and passenger's side front window has auto up/down function with pinch protection.  
\*3 Bluetooth is a registered trademark of Bluetooth SIG, Inc. America. Subject to mobile phone compatibility.  
\*4 It shows: current fuel consumption, average fuel consumption, ambient temperature, odometer and trip meter.  
\*5 Torsen LSD: TORSEN is a registered trademark of JTEKT Inc.  
\*6 SRS: Supplemental Restraint System. Must be used in conjunction with seatbelts. The service intervals for all Subaru BRZ models are every 12 months / 10,000 miles, whichever is sooner.



# COLOURS



WR BLUE PEARL



ICE SILVER METALLIC



LIGHTNING RED



DARK GREY METALLIC

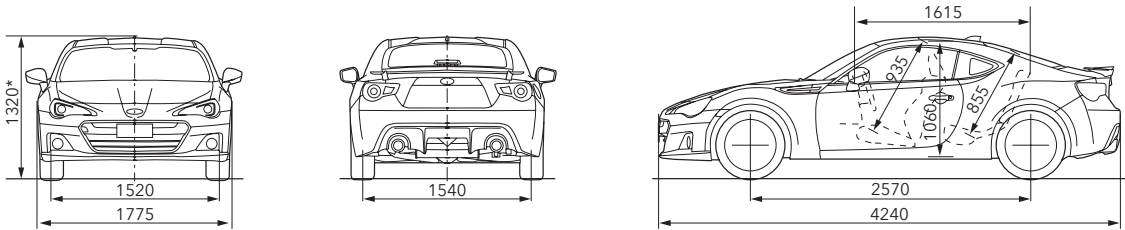


CRYSTAL WHITE PEARL



CRYSTAL BLACK SILICA

# DIMENSIONS



\*Value is a measurement, including the height of radio antenna. The height to the roof is 1,285 mm. Dimensions are measured in accordance with standard measurement of Fuji Heavy Industries Ltd.





# SUBARU

*Confidence in Motion*

**5 YEAR**  
WARRANTY<sup>†</sup>

<sup>†</sup>The Subaru BRZ is covered by a 5 Year / 100,000 mile (whichever is sooner) Limited Warranty which comprises of a standard 3 Year / 60,000 mile (whichever is sooner) Manufacturer's Warranty (bumper to bumper, excluding clutch driven plate) and an Extended Warranty (applies to powertrain only) provided by the importer, Subaru (UK) Ltd, for up to a total of 5 Years or 100,000 miles (whichever occurs first). All vehicle bodywork is covered by a 12 Year Anti-Corrosion Warranty and paintwork is covered by a 3 Year Warranty. Added reassurance is provided by a comprehensive 3 Year Recovery and Assistance Programme valid in the UK only. For general terms and conditions visit [www.subaru.co.uk](http://www.subaru.co.uk)

Technical Data and equipment based on the latest information available at the time of printing. Subaru (UK) Ltd reserves the right to make changes at any time, without notice, in colours, materials, design, prices, equipment and specifications and to discontinue models. Customers are advised to consult their Subaru dealer on the precise details of warranties/guarantees and vehicles available for sale. Models specified are strictly subject to availability. Owing to the limitations of printing processes, the colours reproduced may not exactly match product colours. The contents of this brochure are the copyright of Subaru (UK) Ltd and may not be copied or displayed for commercial purposes without the express permission of Subaru (UK) Ltd.  
© Subaru (UK) Ltd. E & O.E.