

2013 Forester



Love. It's what makes a Subaru, a Subaru.



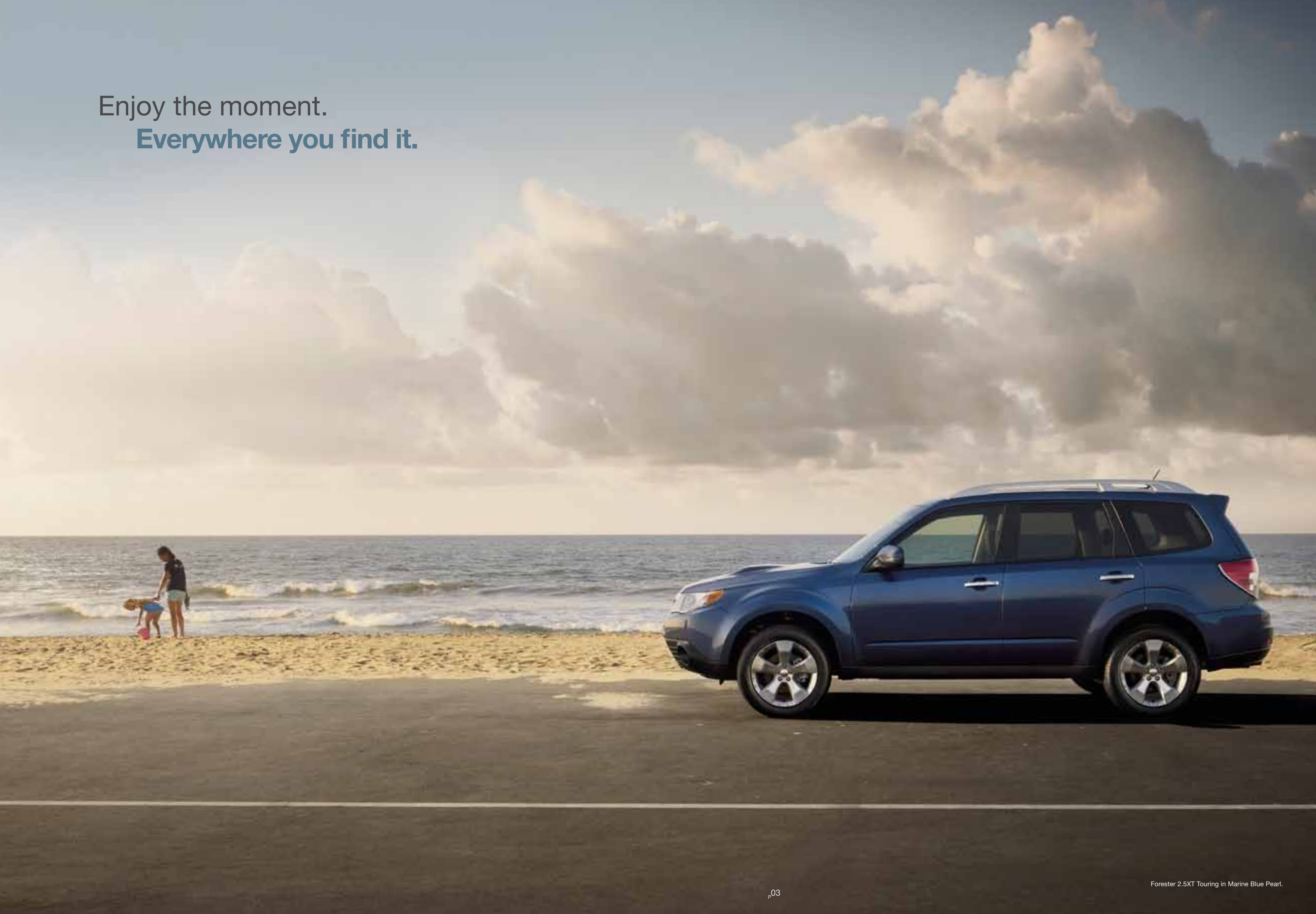
Smarter solutions.
Everyday inspirations.



The 2013 Subaru Forester

There's power in finding the perfect balance. And Forester offers the combination of appealing design, astounding versatility and crash-test proven safety that'll empower you for all the adventures you encounter every day.

Enjoy the moment.
Everywhere you find it.





Turn what you have to do
into what you love to do.



“Unlike many crossovers, the Forester is a delight to drive;
the ride is supple and the handling is secure.”

— *Car and Driver Buyer's Guide 2012 (2012 Subaru Forester)*

A detailed view of the front interior of a car. The seats are upholstered in light-colored leather with visible stitching. The dashboard and center console are also in a matching light color. The steering wheel is visible on the right side of the frame. The overall lighting is bright, suggesting a sunny day.

One size that **actually** fits all.

In charge. At ease.



Interior Features

Settle into the driver's seat, and you'll find yourself in a spacious cabin, filled with amenities designed for the comfort and convenience of everyone aboard. Those in the rear are sure to appreciate the reclining rear seats!¹ Your front passenger will like having a height-adjustable seat, and everyone will enjoy the sunshine and fresh air flowing in from the optional oversized panoramic moonroof. Add in available dual-zone automatic climate control, and your only problem may be getting your passengers to leave.

¹ Reclining rear seats not available on base 2.5X.

Take your comfort zone
on the road.



Versatility. Security. Agility.
In total harmony.



Passenger Protection

Our body structure design, with the Ring-shaped Reinforcement Frame, is engineered to be exceptionally strong for maximum resistance to impact energy, while an array of airbags¹—all standard—further help prevent injury.

¹ Always wear seatbelts. Children should be properly restrained in the rear seat.

² Retractable rear tray not available on base 2.5X.



Interior Versatility

Insightful features like the multifunction center console, and the retractable rear tray² help keep your stuff neatly under control. While a spacious cargo area and a 60/40 split-folding rear seatback make loading, hauling and handling cargo easy.



Subaru Symmetrical AWD

With an almost perfectly symmetrical layout, our unique all-wheel drive system offers better balance for stability and a more efficient flow of power to all four wheels for greater grip and control.



Exceptional Control

The balance and stability of the SUBARU BOXER® engine and the grip of Subaru Symmetrical AWD help give you the power to avoid danger. That poise is combined with VDC electronic stability control, which can intervene to help you stay in control.



Rewarding Technology

Set your desired temperature and available dual-zone automatic climate control will manage your comfort, while standard iPod® control and Bluetooth® hands-free connectivity keep you connected and entertained. Add available HD Radio™ with iTunes® tagging and satellite radio for even more fun on the go.



Ground Clearance

It may have the driving manners of a sedan, but the Forester features a rugged, 4-wheel independent suspension with up to 8.9 inches of ground clearance—enough to allow you to indulge your adventurous side.

2.5X



- 170-hp 2.5-liter 4-cylinder SUBARU BOXER® engine
- Subaru Symmetrical All-Wheel Drive
- 5-speed manual transmission or optional 4-speed automatic transmission
- 16-inch steel wheels with covers
- Cloth upholstery
- 6-way manually adjustable driver's seat. 6-way manually adjustable front-passenger's seat.
- 4-speaker single-CD audio system with Bluetooth® connectivity and USB port/iPod® control

2.5X Limited



- 170-hp 2.5-liter 4-cylinder SUBARU BOXER® engine
- Subaru Symmetrical All-Wheel Drive
- 4-speed automatic transmission
- 17-inch aluminum-alloy wheels
- Raised roof rails: black finish
- Panoramic moonroof
- 10-way power adjustable driver's seat. 6-way manually adjustable front-passenger's seat.
- Reclining rear seatbacks and retractable rear tray with dual cup holders
- Fog lights
- Leather-trimmed upholstery
- 6-speaker single-CD audio system with 4.3-inch LCD display, HD Radio™, Bluetooth® connectivity and USB port/iPod® control
- Automatic climate control system
- All-Weather Package

2.5XT Premium



- 224-hp turbocharged 2.5-liter 4-cylinder SUBARU BOXER® engine
- Subaru Symmetrical All-Wheel Drive
- 4-speed automatic transmission
- 17-inch aluminum-alloy wheels
- Cloth upholstery
- Panoramic moonroof
- 10-way power adjustable driver's seat. 6-way manually adjustable front-passenger's seat.
- Reclining rear seatbacks
- 4-speaker single-CD audio system with Bluetooth® connectivity and USB port/iPod® control
- Aluminum-alloy pedal covers

2.5X Premium



- 170-hp 2.5-liter 4-cylinder SUBARU BOXER® engine
- Subaru Symmetrical All-Wheel Drive
- 5-speed manual transmission or optional 4-speed automatic transmission
- Cloth upholstery
- ▲ Panoramic moonroof
- ▲ 17-inch aluminum-alloy wheels
- ▲ Raised roof rails: black finish
- ▲ 10-way power adjustable driver's seat. 6-way manually adjustable front-passenger's seat.
- ▲ Reclining rear seatbacks
- ▲ Retractable rear tray with dual cup holders

2.5X Touring



- 170-hp 2.5-liter 4-cylinder SUBARU BOXER® engine
- Subaru Symmetrical All-Wheel Drive
- 4-speed automatic transmission
- 17-inch aluminum-alloy wheels
- Panoramic moonroof
- 10-way power adjustable driver's seat. 6-way manually adjustable front-passenger's seat.
- ▲ 7-speaker single-CD audio system with 4.3-inch LCD display, HD Radio™, Bluetooth® connectivity and USB port/iPod® control
- ▲ Rear-Vision Camera
- ▲ HID low-beam headlights
- ▲ Side mirrors with integrated turn signals
- ▲ Raised roof rails: silver finish
- ▲ Leather-trimmed upholstery with one-touch folding rear seatbacks
- ▲ Electroluminescent gauges
- ▲ Dual-zone automatic climate control system

2.5XT Touring



- 224-hp turbocharged 2.5-liter 4-cylinder SUBARU BOXER® engine
- Subaru Symmetrical All-Wheel Drive
- 4-speed automatic transmission
- 17-inch aluminum-alloy wheels
- Panoramic moonroof
- 10-way power adjustable driver's seat. 6-way manually adjustable front-passenger's seat.
- ▲ HID low-beam headlights. Fog lights
- ▲ Side mirrors with integrated turn signals
- ▲ Raised roof rails: silver finish
- ▲ Leather-trimmed upholstery with one-touch folding rear seatbacks
- ▲ 7-speaker single-CD audio system with 4.3-inch LCD display, HD Radio™, Bluetooth® connectivity and USB port/iPod® control
- ▲ Rear-Vision Camera
- ▲ Dual-zone automatic climate control system
- ▲ Electroluminescent gauges
- ▲ All-Weather Package

▲ Additions or differences from preceding trim level at left.

ENGINE AND DRIVETRAIN

	2.5X	2.5XT
Engine	2.5-liter DOHC aluminum-alloy 16-valve horizontally opposed SUBARU BOXER® engine with Active Valve Control System.	2.5-liter DOHC intercooled, turbocharged aluminum-alloy 16-valve 4-cylinder horizontally opposed SUBARU BOXER® engine with Active Valve Control System.
Power Torque	170 hp @ 5,800 rpm 174 lb-ft @ 4,100 rpm	224 hp @ 5,200 rpm 226 lb-ft @ 2,800 rpm
Manual transmission	Fully synchronized 5-speed manual with Incline Start Assist. 2.5X and 2.5X Premium: Standard. 2.5X Limited, 2.5X Touring, 2.5XT Premium and 2.5XT Touring: Not available.	
Automatic transmission	4-speed electronic direct-control automatic with manual shift mode. 2.5X and 2.5X Premium: Optional. 2.5X Limited, 2.5X Touring, 2.5XT Premium and 2.5XT Touring: Standard.	
CA Emissions	PZEV¹	LEV2
Maximum towing capacity	2,400 lbs	2,400 lbs

TRACTION AND STABILITY

Symmetrical All-Wheel Drive	Standard	Standard
Vehicle Dynamics Control (VDC)	Standard VDC electronic stability control utilizes sensors which constantly monitor wheel speeds, steering angle, brake pressure, vehicle yaw rate and lateral g-forces. If VDC detects a difference between the driver's intended path and the one the vehicle is actually taking, VDC applies braking power and/or reduces engine torque to help correct vehicle path.	
Traction Control System (TCS)	VDC also incorporates an all-wheel, all-speed traction control system which senses a loss of traction and applies braking force to the slipping wheel or wheels as necessary to maintain vehicle motion.	

FUEL

Fuel economy (city/highway/combined)²	Manual: 21/27/23 mpg Automatic: 21/27/23 mpg	19/24/21 mpg
Fuel requirement	Unleaded gasoline (87 octane)	Premium unleaded gasoline (91 octane)

CHASSIS

Steering	Power-assisted rack-and-pinion. Turning circle: 34.4 feet.	
Suspension	4-wheel independent suspension. Front: Strut-type with lower L-arm. Stabilizer bar. Rear: Double wishbone. Stabilizer bar.	
Brakes	4-wheel disc, ventilated front. 4-channel, 4-sensor ABS with Electronic Brake-force Distribution (EBD).	
Brake Assist	When emergency braking is detected by how quickly the brake pedal is pressed, maximum brake pressure is immediately applied.	

WHEELS AND TIRES

Wheels	2.5X: 16 x 6.5-inch steel with wheel covers Alloy Wheel Value Package: 16 x 6.5-inch 5-spoke aluminum alloy 2.5X Premium, 2.5X Limited and 2.5X Touring: 17 x 7.0-inch 5-split-spoke aluminum alloy	2.5XT Premium and 2.5XT Touring: 17 x 7.0-inch 5-spoke aluminum alloy
Tires	2.5X: 215/65 R16 96H all-season Alloy Wheel Value Package: 215/65 R16 96H all-season 2.5X Premium, 2.5X Limited and 2.5X Touring: 225/55 R17 95H all-season	2.5XT Premium and 2.5XT Touring: 225/55 R17 95H all-season

EXTERIOR AND INTERIOR DIMENSIONS

Length/Width/Height	179.5 inches/70.1 inches/66.9 inches with roof rails (65.9 inches without roof rails)	179.5 inches/70.1 inches/66.9 inches with roof rails
Wheelbase	103.0 inches	103.0 inches
Track (front/rear)	60.2 inches/60.2 inches	60.2 inches/60.2 inches
Base curb weight (manual/automatic)	2.5X: 3,250 lbs/3,300 lbs 2.5X Premium: 3,300 lbs/3,340 lbs 2.5X Limited: N/A/3,360 lbs 2.5X Touring: N/A/3,360 lbs	2.5XT Premium: N/A/3,450 lbs 2.5XT Touring: N/A/3,460 lbs
Headroom (front/rear)	41.6 inches/40.4 inches (with moonroof: 40.0 inches/37.7 inches)	40.0 inches/37.7 inches
Legroom (front/rear)	43.1 inches/38.0 inches	43.1 inches/38.0 inches
Shoulder room (front/rear)	56.1 inches/55.6 inches	56.1 inches/55.6 inches
Passenger volume	107.6 cubic feet (with moonroof: 102.1 cubic feet)	102.1 cubic feet
Cargo volume	33.5 cubic feet (with moonroof: 30.8 cubic feet)	30.8 cubic feet
Maximum cargo volume	68.3 cubic feet with rear seat lowered (with moonroof: 63.0 cubic feet)	63.0 cubic feet with rear seat lowered

Protecting Your Investment

Once you're part of our family, we'll be there for you. Every Subaru comes with 24-hour roadside assistance for 3 years or 36,000 miles. If you have trouble on the road, a tow to the nearest Subaru dealership and other services are just a phone call away. And to protect you over the long haul, we offer Added Security®—extended service agreements and maintenance plans that will help protect your car for up to 7 years or 100,000 miles. They're the only mechanical and maintenance plans backed by Subaru of America, Inc., and because we've been backing them for more than 25 years, they're agreements you can trust. Your dealer has full coverage details.

Warranties

New Car Limited Warranty	3 years or 36,000 miles, whichever comes first.
Powertrain Limited Warranty	5 years or 60,000 miles, whichever comes first.
Wear Item Limited Warranty	3 years or 36,000 miles, whichever comes first. Repairs to the following items will also be covered under Wear Item Limited Warranty: • Brake Pads • Wiper Blades • Clutch Linings • Transmitter Batteries
Rust Perforation Limited Warranty	5 years, unlimited mileage.

EXTERIOR	2.5X	2.5X Premium	2.5X Limited	2.5X Touring	2.5XT Premium	2.5XT Touring
High-intensity discharge (HID) low-beam and multireflector halogen high-beam headlights	–	–	–	●	–	●
Fog lights	◻	○	●	●	◻	●
Functional hood scoop (feeds turbocharger intercooler)	–	–	–	–	●	●
Rear spoiler	–	–	–	–	●	●
Black side mirrors	●	–	–	–	–	–
Body-color side mirrors	–	●	●	–	●	–
Body-color side mirrors with integrated turn signals	–	–	–	●	–	●
Windshield wiper de-icer and heated side mirrors (All-Weather Package)	–	○ ³	●	●	–	●
Raised roof rails: black finish	○	●	●	–	●	–
Raised roof rails: silver finish	–	–	–	●	–	●
Panoramic moonroof (99% UV light reducing)	–	●	●	●	●	●

SEATING AND TRIM						
6-way manually adjustable driver's seat. 6-way manually adjustable front-passenger's seat.	●	–	–	–	–	–
10-way power adjustable driver's seat with power adjustable lumbar support. 6-way manually adjustable front-passenger's seat.	–	●	●	●	●	●
Heated front seats (All-Weather Package)	–	○ ³	●	●	–	●
Reclining rear seats	–	●	●	●	●	●
60/40-split flat-folding rear seatbacks	●	●	●	●	●	●
One-touch folding rear seatbacks	–	–	–	●	–	●
Leather-wrapped steering wheel and shifter handle	–	–	●	●	–	●
Cloth upholstery	●	●	–	–	●	–
Leather-trimmed upholstery	–	–	●	●	–	●
Aluminum-alloy pedal covers	–	–	–	–	●	●

CONVENIENCE FEATURES						
Driver's auto up/down power window	–	●	●	●	●	●
3-spoke steering wheel with audio system, cruise control and Bluetooth® buttons	●	● ⁴	●	●	●	●
Manually adjustable tilt steering column	●	–	–	–	–	–
Manually adjustable tilt/telescoping steering column	–	●	●	●	●	●
8 cup holders	–	●	●	●	●	●
Overhead console with dual maplights and sunglasses storage	●	●	●	●	●	●
Multifunction center console with detachable pocket and partition, sliding armrest, dual cup holders and 12-volt power outlets	●	●	●	●	●	●
Retractable rear tray with dual cup holders	–	●	●	●	●	●
Cargo-area with 2 grocery bag hooks, 4 tiedown hooks and 2 upper utility hooks	●	●	●	●	●	●
Cargo-area underfloor storage	●	●	●	●	●	●
Removable cargo-area tray	–	–	●	●	–	–

INSTRUMENTATION						
Analog speedometer, tachometer and fuel gauges	●	●	●	–	●	–
Analog speedometer, tachometer, “eco” fuel economy and temperature gauges with electroluminescent lighting	–	–	–	●	–	●
Multifunction display with average fuel economy, clock and ambient temperature	●	●	●	●	●	●

AUDIO SYSTEMS						
4-speaker single-CD audio system with USB port/iPod® control, Bluetooth® audio streaming and hands-free phone connectivity, and 3.5-mm auxiliary jack	●	● ⁵	–	–	●	–
6-speaker (2.5X Premium and 2.5X Limited) or 7-speaker (2.5X Touring and 2.5XT Touring) single-CD audio system with 4.3-inch LCD display, HD Radio™ with iTunes® tagging capability, USB port/iPod® control, Bluetooth® audio streaming and hands-free phone connectivity, and 3.5-mm auxiliary jack	–	○	●	● ⁶	–	● ⁶

CLIMATE CONTROL						
Manually adjustable CFC-free air conditioning system with air filtration	●	●	–	–	●	–
Automatic climate control system with air filtration	–	–	●	–	–	–
Dual-zone automatic climate control system with air filtration	–	–	–	●	–	●

SECURITY						
Keyless entry system with answer-back electronic chirp	●	●	●	●	●	●
Antitheft security system	●	●	●	●	●	●
Engine immobilizer	●	●	●	●	●	●

SAFETY	2.5X	2.5X Premium	2.5X Limited	2.5X Touring	2.5XT Premium	2.5XT Touring
ACTIVE						
Subaru Symmetrical All-Wheel Drive (AWD)	●	●	●	●	●	●
Vehicle Dynamics Control (VDC)	●	●	●	●	●	●
SUBARU BOXER® engine	●	●	●	●	●	●
4-wheel antilock braking system (ABS) with Electronic Brake-force Distribution (EBD)	●	●	●	●	●	●
Brake Assist	●	●	●	●	●	●
Daytime Running Lights (DRL)	●	●	●	●	●	●

PASSIVE						
Driver's and front-passenger's front airbags (SRS) ⁷	●	●	●	●	●	●
Subaru advanced frontal airbag system ⁷	●	●	●	●	●	●
Seat-mounted front side-impact airbags (SRS) ⁷	●	●	●	●	●	●
Side-curtain airbags protecting front and rear outboard occupants (SRS) ⁷	●	●	●	●	●	●
Rollover sensor (SRS) ⁷	●	●	●	●	●	●
Height-adjustable active front-seat head restraints	●	●	●	●	●	●
Height-adjustable 3-point front seatbelts with pretensioners and force limiters. 3-point seatbelts at all rear seating positions.	●	●	●	●	●	●
Rear child-safety door locks	●	●	●	●	●	●
LATCH system: Lower Anchors and Tethers for Children	●	●	●	●	●	●
Rear-Vision Camera ⁵	–	◻	◻	●	–	●

OPTIONAL EQUIPMENT						
4-speed adaptive electronic direct-control automatic transmission with manual shift mode	○	○	●	●	●	●
TomTom® navigation system: Integrated 4-speaker audio system with single-CD/DVD ⁸ player and detachable TomTom® high-resolution 4.3-inch touch-screen navigation system with TomTom® Traffic ⁹	–	○ ¹⁰	–	–	–	–
Navigation System: High-resolution 6.1-inch touch-screen voice-activated GPS navigation system and integrated 6-speaker audio system with HD Radio™ with iTunes® tagging capability, USB port/iPod® control, XM® Satellite Radio ¹¹ and XM® NavTraffic ¹¹ , SMS text messaging capability, Bluetooth® audio streaming and hands-free phone connectivity, and 3.5-mm auxiliary jack	–	–	○	○	–	○
All-Weather Package: Windshield wiper de-icer, heated side mirrors and heated front seats	–	○ ³	●	●	–	●
Alloy Wheel Value Package: Raised roof rails, 16 x 6.5-inch aluminum-alloy wheels	○	–	–	–	–	–
All-Weather Plus Package: 6-speaker single-CD audio system with 4.3-inch LCD display, HD Radio™ with iTunes® tagging capability, USB port/iPod® control, Bluetooth® audio streaming and hands-free phone connectivity, and a 3.5-mm auxiliary jack, fog lights and All-Weather Package	–	○	–	–	–	–
Rear-Vision Camera ⁵	–	◻	◻	●	–	●

● Standard ○ Optional – Not equipped ◻ Available dealer-installed accessory

1 2013 Subaru Impreza and XV Crosstrek 2.0L, and Forester, Outback, Legacy 2.5L non-turbo models achieving a Partial Zero Emission Vehicle (PZEV) rating by the California Air Resources Board are available in all 50 states. Only those registered in California, Connecticut, Maine, Maryland, Massachusetts, New Jersey, New York, Rhode Island and Vermont will be eligible for the 15 years/150,000 mile emission warranty. Oregon, Pennsylvania and Washington vehicles are not covered under PZEV emissions control warranty. See your warranty maintenance booklet for additional information. 2 2013 EPA fuel economy estimates. Actual mileage may vary. 3 Standard on 2.5X Premium equipped with 5-speed manual transmission, optional when equipped with 4-speed automatic transmission. 4 Steering-wheel-mounted Bluetooth® hands-free phone buttons not available with optional TomTom® navigation system. 5 Rear-Vision Camera available as an accessory on 2.5X Premium equipped with optional TomTom® navigation system, 2.5X Premium equipped with optional All-Weather Plus Package and 2.5X Limited. Bluetooth® audio streaming not available with optional TomTom® navigation system. See your dealer. 6 6-speaker audio system when equipped with optional navigation system. 7 The Supplemental Restraint System (SRS) (airbags) affords the driver and the front passenger additional protection in moderate to severe frontal and side-impact collisions and outboard 2nd-row passengers additional protection in moderate to severe side-impact collisions. This system provides supplemental protection only, and seatbelts must be worn in order to avoid injuries to out-of-position occupants upon airbag deployment and to provide the best combined protection in a serious accident. Children should always be properly restrained in one of the rear seats. See Owner's Manual for recommended seating position. 8 DVD player only with vehicle stopped and parking brake engaged. 9 Subscription fee and cell-phone data plan usage required. Not all cell phones compatible and service not available in all areas. See your dealer. 10 With automatic transmission only. 11 Activation and required monthly subscription sold separately. Includes 4-month trial subscription. See your dealer.

Some images shown are for illustration purposes only. Specifications in this brochure are based on the latest product information available at the time of publication. For the most up-to-date and detailed product information, log on to subaru.com. Some equipment shown in photography in this brochure is optional at extra cost. Specific options may be available only in combination with other options. Specific combinations of equipment or features may vary from time to time and by geographic area. Certain accessories and equipment may not be available at the time of publication. Subaru of America, Inc., reserves the right to change or discontinue at any time, without notice, prices, colors, materials, equipment, accessories, specifications, models and packages without incurring any obligation to make the same or similar changes on vehicles previously sold. Colors shown may vary due to reproduction and printing processes.

This brochure was prepared by Subaru of America, Inc. A warranty from Subaru of America, Inc., is available only on cars sold to the first retail purchaser through an authorized Subaru dealer in the continental U.S. or Alaska. Subaru, SUBARU BOXER, Added Security, Equity Shield and Forester are registered trademarks. Confidence in Motion is a trademark of Fuji Heavy Industries, Ltd. Bluetooth is a registered trademark of Bluetooth SIG, Inc. HomeLink is a registered trademark of Prince Corporation, a wholly owned subsidiary of Johnson Controls. SIRIUS and XM Satellite Radio are registered trademarks of SiriusXM Radio Inc. iPod and iTunes are registered trademarks of Apple Inc. TomTom is a registered trademark of TomTom International B.V. Corporation. HD Radio is a trademark of iBiquity Digital Corporation. For more information, contact your Subaru dealer or log on to subaru.com.

Which wheels?



2.5X—Alloy Wheel Value Package



2.5X—Premium, Limited and Touring



2.5XT—Premium and Touring

Make your Forester truly yours.



Heavy-duty Cargo Basket

Mounts to standard roof rails and is compatible with most genuine Subaru roof carriers for bikes, kayaks, skis and cargo carriers. A Roof Carrier Base Kit is available for models without roof rails.

Aero cross bars shown with heavy-duty cargo basket.



Cargo Tray

Tough, durable tray helps protect cargo area. Can be easily removed and rinsed clean.



Sport Grille

Bold metal mesh design adds an aggressive look to Forester. Comes pre-painted and ready to install.



Rear Bumper Cover

Helps protect upper surface of painted rear bumper from scratches and dings during loading and unloading.



All-weather Floor Mats

Custom-fitted, heavy-gauge protective mats. Help protect vehicle carpet from sand, dirt and moisture.

Not intended for use on top of carpeted floor mats.



Moonroof Air Deflector

Helps reduce wind noise and sun glare when moonroof is open.



Body Side Moldings

Color-matched moldings help protect vehicle doors from parking lot dings, while attractively blending with the lines of the car.



Reverse Assist Sensors

Helps provide added confidence when backing up or parallel parking. While in reverse, audible warnings alert the driver as the vehicle approaches large objects in its path.



Remote Engine Starter

Allows vehicle to start by pushing a button from the convenience of home or the office (up to 400 feet away, depending on obstructions) so that the vehicle's interior temperature is more comfortable upon entry.



Trailer Hitch

Heavy-duty rated at 200 lbs tongue weight and 2,400 lbs towing capacity.

Ball not included. Trailer brakes may be needed.



SiriusXM™ Satellite Radio

Over 130 digital channels of commercial-free music, sports, news, talk, lifestyle and more. Application varies by model.

Excludes all vehicles equipped with navigation systems. Monthly subscriptions sold separately. Additional fees, equipment and taxes may apply. Not available in Hawaii and Alaska.

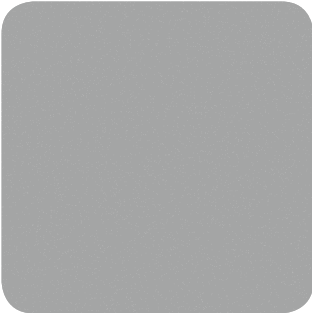


Puddle Lights

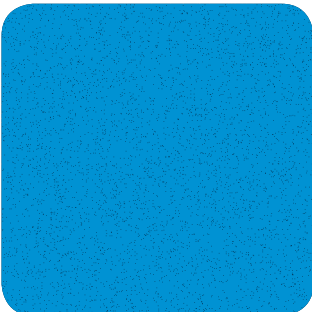
LED lights illuminate when vehicle doors are unlocked using the keyless entry. A soft glow shines on the ground, aiding entry and exit of the vehicle.



Satin White Pearl



Ice Silver Metallic



Marine Blue Pearl



Sage Green Metallic

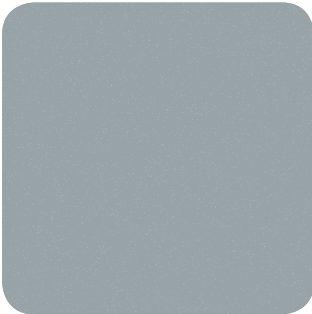
Paint



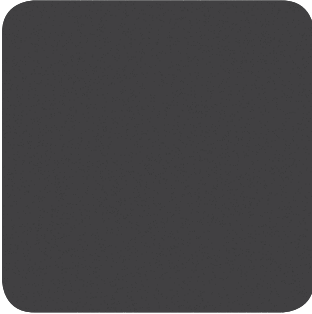
Camellia Red Pearl



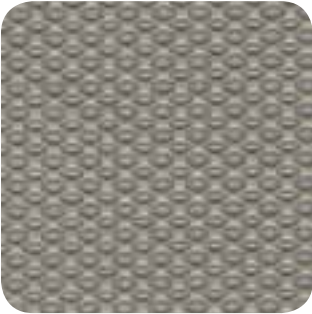
Deep Cherry Pearl



Dark Gray Metallic



Obsidian Black Pearl



Platinum Cloth (PC)



Black Cloth (BC)



Platinum Moray Cloth (PMC)

Upholstery



Black Moray Cloth (BMC)



Platinum Leather (PL)



Black Leather (BL)

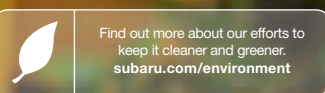
<i>Color Combinations</i>	2.5X 2.5X Premium	2.5XT Premium	2.5X Limited 2.5X Touring 2.5XT Touring
Satin White Pearl	PC	PMC	PL
Ice Silver Metallic	BC	BMC	BL
Marine Blue Pearl	PC	PMC	PL
Sage Green Metallic	PC	PMC	PL
Camellia Red Pearl	PC	PMC	PL
Deep Cherry Pearl	BC	BMC	BL
Dark Gray Metallic	PC	PMC	PL
Obsidian Black Pearl	BC	BMC	BL

These brochures were printed with vegetable-based inks and produced using a “Green Printing Process” and FSC® standards. The Forest Stewardship Council™ (FSC) is an international organization that brings people together to find solutions which promote responsible stewardship of the world's forests and environments.

By producing these brochures in a green way rather than by traditional methods, we saved 66 trees preserved for the future; 30,155 gallons wastewater flow saved; 1,912 lbs solid waste not generated; 6,687 lbs net greenhouse gases prevented; 27,000,000 BTUs energy not consumed. Calculations provided by Environmental Paper Network. FSC® is not responsible for any calculations on saving resources by choosing this paper.

Responsible. Reliable. Ready to join the family.

At Subaru, we're committed to building a lasting, rewarding relationship with you and the world we share. We start by building our vehicles to last—it's why 96% of all the vehicles we've built in the last 10 years are still on the road today.¹ We also share your desire for a cleaner, greener world. The Forester, Impreza, XV Crosstrek, Legacy and Outback have all been recognized with Partial Zero Emission Vehicle—PZEV²—status because of their exceptionally low emissions. What's more, in 2004 Subaru of Indiana Automotive, Inc., (SIA) became the first manufacturing facility in the U.S. to reach zero landfill status—nothing from its manufacturing efforts ever goes into a landfill.



1 Based on Polk registration data in the U.S. 2002–2011. 2 2013 Subaru Impreza and XV Crosstrek 2.0L, and Forester, Outback, Legacy 2.5L non-turbo models achieving a Partial Zero Emission Vehicle (PZEV) rating by the California Air Resources Board are available in all 50 states. Only those registered in California, Connecticut, Maine, Maryland, Massachusetts, New Jersey, New York, Rhode Island and Vermont will be eligible for the 15 years/150,000 mile emission warranty. Oregon, Pennsylvania and Washington vehicles are not covered under PZEV emissions control warranty. See your warranty maintenance booklet for additional information.

