

I'm on my fifth Subaru; this one has 180,000 miles and is going strong • My life is pretty random, but my Subaru fits it—perfectly • This car has never failed to take me where I want to go • Because of the excellent safety these cars have, I was able to walk away from the accident with little to no injury • The cargo area fits all the things I love to bring on an adventure • Both of our Subaru cars have never failed to perform for us, and we plan to stick with Subaru for a long time • **Subaru vehicles in the words of those who own them** • I feel a lot of confidence knowing my car is a Top Safety Pick, and has a five-star crash-test safety rating • My Subaru is so dependable • As bad as the conditions get out here, my Subaru has kept a firm grip on the road • I need a car I can count on. My Subaru has never let me down • We use our Subaru for hiking and camping, as well as raft and kayak transport. It has served well on many adventures • With all the different ways you can configure the interior, who needs a pickup? • Thank you for making a vehicle that I can believe in • I will never drive anything other than Subaru • Thanks for a great driving experience!



Love. It's what makes a Subaru, a Subaru.

2009 | **Model Line**



subaru.com



This brochure was printed with vegetable-based inks and produced using a "Green Printing Process" and FSC standards. The Forest Stewardship Council (FSC) is an international organization that brings people together to find solutions which promote responsible stewardship of the world's forests and environments.

By producing this brochure in a green way rather than by traditional methods, we saved 282.55 fully grown trees; 120,019 gallons of water; 200,138,365 BTUs of energy; 13,280 lbs of solid waste; and 26,147 lbs of greenhouse gases!

This brochure is printed in the U.S.A. on recycled paper. ©
©2008 Subaru of America, Inc. 09.FULSRB.525 (S-8639, 590K, 9/08, CG)

2009 Subaru Model Line



Because what's "out there" is always more interesting. Because seasons are beautiful things. Because trust is the greatest creature comfort. Because the best part of a road trip is being on the road. Because you're working today for a better tomorrow. There are many reasons to own a Subaru, but being able to live your life the way you love is the most important. **Love. It's what makes a Subaru, a Subaru.**

Subaru Symmetrical All-Wheel Drive is the result of more than 30 years of passionate engineering focused on designing the best system for vehicle traction possible. Better traction means better handling and control.

It expands a vehicle’s versatility and capability. Traction increases the trust and confidence drivers can put in their vehicles. Subaru believes in traction. It’s why Subaru owners believe in their vehicles.

control

All Weather Conditions

Snow and rain can surprise even the best planners. Be ready with the exceptional traction and control of Subaru AWD.



Multiple Road Types

The best adventures don’t always happen on immaculate asphalt. Subaru AWD helps give you the freedom to stray off the beaten path onto gravel, dirt, or other road types with confidence.



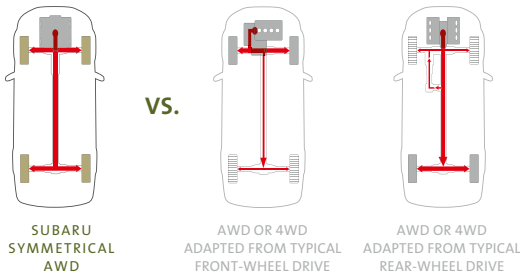
Accident Avoidance

When danger steps into your path, the safest route is to step right around it. The trademark traction and control of Subaru AWD helps you stay safe by staying ready.



Spirited Handling

You won’t be the first to be surprised by the handling and agility of a Subaru. Subaru AWD maximizes the feeling of being connected to the road with its remarkable balance and grip.



Quicker Response

There are only four small patches of rubber that keep you in control of your vehicle. The more your tires are engaged, the more control you have. Subaru keeps more power routed to all four tires than other systems that only fully engage all wheels as a reaction to slippage that has already occurred.

Better Balance

Every Subaru is built for AWD from the ground up. This allows us to create a balanced, symmetrical drivetrain, which starts with the SUBARU BOXER® engine. The engine’s horizontally opposed design has a lower center of gravity than other formats, and the drivetrain is free of the extra components some systems need to get power to all four wheels. This balance means stability and agility that helps make driving your Subaru safer and more fun.



For Subaru, the only thing more important than the driving experience of our vehicles is that you arrive safely at your destination. This commitment to **protect** occupants with multidimensional safety is what made each and every Subaru model tested, when equipped with available VDC, an IIHS 2008 Top Safety Pick.¹



★★★★★
for front and side-impact collisions.² — National Highway Traffic Safety Administration
OUTBACK

★★★★★
for front and side-impact collisions.² — National Highway Traffic Safety Administration
FORESTER

★★★★★
for front and side-impact collisions.² — National Highway Traffic Safety Administration
TRIBECA

★★★★★
for front and side-impact collisions.² — National Highway Traffic Safety Administration
LEGACY

★★★★★
for front and side-impact collisions.² — National Highway Traffic Safety Administration
IMPREZA

¹ Rating based on Insurance Institute for Highway Safety's (IIHS's) 40-mile-per-hour frontal crash test, 31-mile-per-hour side-impact test, and 20-mile-per-hour rear-impact test. For more information, contact IIHS or visit their website at www.iihs.org.

² Star ratings are part of the U.S. Department of Transportation's [safercar.gov](http://www.safercar.gov) program (www.safercar.gov).

Durability and a low impact on the **environment** have long made Subaru vehicles the choice of drivers who want to enjoy the beauty of the natural world. By eliminating pollutants during the production process and creating efficient, low-emission vehicles, Subaru works diligently to protect that beauty and the earth we all share.

clean

Zero Landfill

In 2004, Subaru of Indiana Automotive (SIA) became the first manufacturing facility in the U.S. to reach zero landfill status—nothing from its manufacturing efforts ever goes into a landfill. What's more, Subaru facilities in Japan have achieved similar goals in reusing and recycling industrial waste, and in greatly reducing carbon emissions.

Low Emissions

The Forester 2.5X, Legacy 2.5i and Outback 2.5i models are three of the select group of vehicles to achieve Partial Zero Emission Vehicle (PZEV)¹ status. They achieve this recognition for cleanliness and efficiency without the negative environmental impact required to manufacture some high-efficiency systems, and without compromising performance and versatility.



For select Forester 2.5X, Legacy 2.5i and Outback 2.5i models, the SmartWay mark is based on the vehicle's officially certified exhaust emissions and greenhouse gas scores.² Visit www.epa.gov/greenvehicles for more information.

¹ Available on 2009 Forester, Legacy and Outback non-turbo 2.5-liter models certified as Partial Zero Emission Vehicles (PZEV) that are sold, registered and operated in California, Connecticut, Maine, Massachusetts, New Jersey, New York, Oregon, Pennsylvania, Rhode Island, Vermont and Washington. PZEV emissions warranty applies only in certain states. See your dealer for complete information on emissions and new car limited warranties.

² For all 2009 Forester, Legacy and Outback non-turbo 2.5-liter models certified as PZEV that are sold, registered and operated only in California and certain other states.

Forester



Because you love every moment.

Where are you headed today? Picking up or dropping off? Loading or unloading? Getting there or getting away? Your day-to-day endeavors ask a lot of you. But, with more space, more comfort, and more versatility than ever, the completely redesigned Subaru Forester® has a way of changing the things you have to do into the things you love to do.

Forester

2.5X | 2.5X Premium | 2.5X Limited | 2.5XT | 2.5XT Limited

For the adventure called life.

Engineering a truly versatile vehicle doesn't have to be complicated, it just has to be smart. With ingeniously distributed space, excellent visibility, and features like standard AWD—the all-new Forester inspires confidence on the road, while fitting intelligently into an owner's life. Choose the efficient 2.5X with a 170-horsepower SUBARU BOXER® engine for maximum efficiency. Or go for the potent, turbocharged 224-horsepower 2.5XT for ample motivation.



Forester 2.5XT Limited with Platinum leather.



Multifunction Center Console

Need a place for a purse? Or a couple of extra cups? Maybe you need a pocket perfect for your iPod® or cell phone? Whatever it is, chances are the adaptable new center console of the Forester can find a way to fit it.

Increased Interior Room

Increasing the legroom for rear passengers was just the start. Wider door openings and more step-in room make it easier for adults to get in and out. And the space is thoughtfully distributed, which means big things like boxes or skis and little things like books or bags fit, and can be reached more easily.



Retractable Rear Tray

Another example of smart innovations that enhance the versatility of the Forester interior. Even with the rear armrest down, this feature folds out to reveal a convenient tray and cupholders for the rear passengers. It folds away neatly when you need to make more room!

Navigation System

Get turn-by-turn directions to that restaurant across town or to a national park on the other side of the state. The available GPS navigation system features an ultra-sharp, 7-inch screen and an easy-to-use touch-screen interface. When not in use, the system provides you with useful tools, like a calendar and calculator.

Top Safety Pick

Subaru safety starts with features like the ring-shaped reinforcement frame for the strength to help protect passengers in an accident, and is enhanced by technology like VDC electronic stability control for the agility and control to help avoid accidents in the first place. This approach to safety helps make the Forester an exceptionally safe vehicle, one recognized as a Top Safety Pick² by the Insurance Institute of Highway Safety.

¹ Not available on base 2.5X.
² Rating based on Insurance Institute for Highway Safety's (IIHS's) 40-mile-per-hour frontal crash test, 31-mile-per-hour side-impact test, and 20-mile-per-hour rear-impact test. For more information, contact IIHS or visit their website at www.iihs.org.

Tribeca



Because you love the journey.

We took everything you already love about Subaru—innovative engineering, intelligent design, all-wheel drive control and safety—and expanded on it with style and space to create the biggest and most versatile Subaru ever. With the Tribeca®, you have enough versatility to accommodate what the week brings, and enough sophistication for all the weekends in between.





Tribeca Limited with Desert Beige leather and optional 3rd-row seating.

Tribeca

Tribeca | Tribeca Special Edition
Tribeca Limited



Flexible Cargo Space

The best way to make your journey more enjoyable is to bring more of the things and people you love. With 64 different ways to configure the interior, you'll be able to customize it to make the best use of the 74.4 cubic feet of total cargo space the Tribeca gives you to work with.

¹ With optional 3rd row.

3rd-Row Seating

The available 3rd row allows for 7-passenger capability—or fold down one or both of the seats to access a cargo-area with up to 37.6 cubic feet of space. What's more, you can access the 3rd row from both sides of the vehicle.

Flexible 2nd Row

With a seatback split three ways, you can seat three across, or fold down one or two of the seatbacks to carry longer cargo. Also, the 2nd row slides almost eight inches forward and backward, and reclines for comfort.

Refined space. Abundant rewards.

Many SUVs offer a spacious interior. But the Tribeca is designed to be so much more. First, the elegant interior is intelligently proportioned to optimize passenger comfort while maintaining vehicle agility and drivability. Second, it's loaded with convenience features like ten separate cupholders, four cargo-area hooks, and the flexible 2nd row to ensure maximum utility. This style and convenience is matched with smooth performance. Its 6-cylinder SUBARU BOXER® engine, which runs on regular unleaded, produces an inspiring 256 horsepower.



Rear-Seat Entertainment

Your passengers can enjoy their favorite movies on the road with the available rear-seat DVD entertainment system. It features a large 9-inch monitor with widescreen format, wireless headphones, remote control and video iPod® compatibility (additional equipment required). You can also plug in a video camera or console to play video games.

Navigation System with Rear-Vision Camera

The comfort and confidence of knowing where you're going at all times. A few taps on the available navigation system and you'll have a guide, across town or across the country. Or switch to the rear-vision camera to get a clear view of exactly what's behind you.



Outback



Because you love adventure.

What draws you to the life of adventure? The roar of a rushing river? First tracks in fresh powder? Maybe it's getting to that spectacular overlook right at sunrise. The 2009 Outback® is ready to give you the confidence to get there. With Subaru Symmetrical All-Wheel Drive standard, it's prepared to handle the unexpected detours, unpredictable weather and other challenges you can count on along the way.

Outback

2.5i | 2.5i Special Edition | 2.5i Limited
2.5XT Limited | 3.0R Limited

The all-season, all-sport, all-star crossover.

Ready-for-anything capability matched with take-everything versatility. The Outback has the qualities and features you need to embrace your adventurous side. Choose from the 170-horsepower 2.5i, which delivers great gas mileage and low emissions. The 243-horsepower 2.5XT, and its turbocharged kick. And the 245-horsepower 3.0R, which provides ultra-smooth performance. Each trim level is designed for comfort and confidence on the road with features like the available panoramic moonroof and Vehicle Dynamics Control (VDC).



Outback 3.0R Limited with Warm Ivory leather and optional navigation system.



Harman Kardon Premium Audio

With 440 watts of power and brilliant clarity, every one of your adventures will have the soundtrack it deserves. Music comes alive with 9 speakers and an amplifier built and custom-tuned by the audio wizards at Harman Kardon® for stunning range and realism, which is heightened by Digital Signal Processing (DSP) for astounding fidelity.

Rugged Suspension

With as much as 8.7 inches of ground clearance, rough conditions won't slow you down. What's more, this 4-wheel independent system was built to provide responsive stability and reliable support for all your adventures.

SI-Drive

Puts maximum performance or efficiency within easy reach. Available Subaru Intelligent Drive (SI-DRIVE) tailors the performance of the Outback to suit your driving needs—or desires. Intelligent mode helps get the best gas mileage possible, while Sport and Sport Sharp modes give you increasingly quick throttle response and acceleration.



Versatile Roof Rack

Capable of carrying up to 100 pounds of gear, the roof rack system is ready to take on whatever equipment you just can't fit inside the spacious interior of the Outback. Choose from a wide list of available top-quality accessories to get the exact carrying setup you need.

Cargo Capacity

From skis to backpacks to water bottles, the Outback adapts to your changing needs with plenty of storage space and flexible cargo systems that keep your gear secure yet conveniently at hand. With 60/40-split flat-folding rear seats, you can carry a myriad of differently sized objects, even while carrying passengers. Fold both rear seats for full access to 65.4 cubic feet of cargo area.

Legacy



Because you love to drive.



Temptation at first sight? Yes, but just wait until you get to know it better. On paper, the Legacy® has all the specs and features that you've ever wanted in a sport sedan. But true chemistry blooms once you get it out on the road. As it transforms every drive into a voyage with its smooth, efficient power and precise control, your mind gets used to the phrase "I love to drive."

Legacy

2.5i | 2.5i Special Edition | 2.5i Limited | 2.5GT Limited
2.5GT spec.B | 3.0R | 3.0R Limited

RPMs with a Ph.D.

The Legacy is a sport sedan enhanced to put you in control on the road with the traction of AWD, and the balance of the SUBARU BOXER® engine. It also puts you in control of the performance with sophisticated technologies like Subaru Intelligent Drive (SI-DRIVE). Powering the 2.5i models is a 170-hp 4-cylinder engine, while the 2.5GT models feature the inspiring punch of 243 turbocharged horses. For smooth and responsive power, the 6-cylinder 3.0R delivers 245 horsepower. Each choice creates a unique driving experience that moves you in more ways than one.



Legacy 2.5GT Limited with Charcoal Gray leather, optional navigation system and automatic transmission.



Navigation and Satellite Radio

With the available GPS navigation system, you'll be able to find that epic drive or that restaurant everyone is talking about. All it takes is a few taps on the 7-inch high-resolution touch-screen. XM® or SIRIUS® Satellite Radio is also available. Choose either one, and enjoy a vast array of digital-quality programming no matter where your love of driving takes you.

Bilstein Suspension

Outfitted with an aggressive sport-tuned Bilstein® suspension, the 2.5GT spec.B and the 3.0R Limited take control a step beyond. The spec.B suspension uses aluminum components to reduce weight. Both ride on 18-inch wheels with wide, performance-oriented tires to maintain optimal adhesion. All working together to create an intimate connection to the road.



Harman Kardon Premium Audio

With 385 watts of power and brilliant clarity, your music will have the impact it deserves. 9 speakers and an amplifier built by the engineers at Harman Kardon® create stunning range and realism. Engineered to replicate home theater quality sound in the cabin of your Legacy, the premium audio system uses Digital Signal Processing (DSP) for astounding fidelity.

60/40-Split Folding Seats

Who says you can't take it with you? Driving may be a reward unto itself, but being able to fit your stuff inside your car makes it all the better. The 60/40-split flat-folding rear seats will help you accommodate a variety of differently shaped objects even if you're bringing along passengers.

SI-Drive

With a mere flick, the available Subaru Intelligent Drive (SI-DRIVE) system transforms performance characteristics to suit your driving needs—or desires. Put it in Intelligent mode for smoother response and fuel efficiency. Dial it up to Sport for quick throttle feedback and linear acceleration. Sport Sharp mode delivers even quicker response, for maximum enjoyment.

Interior Refinement

Step inside and be rewarded. Drivers can achieve ideal comfort with a tilt-and-telescoping steering wheel, an available 8-way power driver's seat with 2-position memory and available heated front seats. Everyone will appreciate the available leather-trimmed upholstery, and an interior designed for stylish sensibilities.

Impreza



Because you love calling the shots.



Backpacking by day. Backstage by night. Finally a car that can keep up with your demanding life. With Subaru traction and control, the 2009 Subaru Impreza can take you as far away from the action as you want and has the roominess to get you and your friends back to the middle of everything. With several versions to choose from—including 4-door or 5—good luck picking a favorite.

Impreza

2.5i | 2.5i Premium | Outback Sport | 2.5GT



Flexible Space

Both the 4- and 5-door Impreza let you transport a myriad of differently sized objects with their 60/40-split flat-folding rear seats. With both the rear seatbacks up, you can seat three friends. It also allows for two passengers and a long item, or one passenger and gear for everybody. Or fold both for full access to the 44.4 cubic feet of cargo capacity in the 5-door, and enough room to hold three golf club bags in the 4-door.

Impreza 2.5i Premium in Satin White Pearl with Ivory Tricot and optional navigation system.



Works smarter, so you can play harder.

The Impreza gives you the freedom to do what you want, when you want. Weather won't stop you. Space won't limit you. With all the handy compartments and places for gear, your stuff won't get in your way. You'll never lack for motivation with the 170-horsepower SUBARU BOXER® engine. And with the exciting surge that comes from the 224-horsepower 2.5GT, everyday life won't be able to slow you down. With such smart design and engineering, there's truly nothing stopping you now.



Impreza 2.5GT in Spark Silver Metallic.

Multidimensional Safety

Subaru safety starts with features like the ring-shaped reinforcement frame for the strength to help protect passengers in an accident. It's then enhanced by technology like VDC electronic stability control for the agility to help avoid accidents in the first place. This approach to safety helps make the Impreza an exceptionally safe vehicle that's still fun to drive.

2.5GT

Your fast-paced life just got faster. The new Impreza 2.5GT has no trouble keeping up with you. It sports a power-packed 224-horsepower SUBARU BOXER engine, which delivers 226 lb-ft of torque for quicker, more confident runs up the mountain or down the block.

Audio and Entertainment System

The music never ends with an available in-dash 6-disc CD changer pumping out music through its 10 speakers. The available premium audio system is enhanced with SRS Circle Surround Automotive® audio enhancement to mimic live performances. And with the available accessory iPod® interface kit and auxiliary input, you can choose the media source that best suits your entertainment needs.

Outback Sport

For those who want to take their Impreza even farther, they can. The Outback Sport comes with a roof rack to hold what you'll need on your getaway, and increased ground clearance to tackle rough conditions you might find in getting to your secret spot.



Impreza Outback Sport in Sage Green Metallic/Steel Silver Metallic.

Impreza WRX



Because you love the rush.

Point A to point B doesn't even begin to describe it. You see an open stretch of tarmac as a blank canvas, and driving as a form of self-expression. You are not alone. G-force junkies can be found all over the world. And for years, untold numbers have been united by their passion for an incomparable high-performance car: the Impreza WRX®—which is now bolder and badder. Just one taste, and you'll know exactly what has inspired so many.

Impreza WRX

WRX | WRX Premium

Now, every road is a shortcut.

Always there with time to spare. The new 2009 WRX keeps you ahead of the competition with remarkable specs, stats and features. Its legendary turbocharged SUBARU BOXER® engine now puts 265 horsepower—more than any previous WRX—of raw power at your disposal, while a tweaked, track-ready suspension and rally-tested AWD system glue rubber to road like nothing else. And this new WRX still crosses the line between being fast and being user friendly. Choose between a 4- or 5-door model, both with an available moonroof, and both with plenty of room for all the people and gear you care to bring along for the ride.

Impreza WRX Premium with Carbon Black Checkered cloth and optional navigation system.



Navigation System and Bluetooth

Just a few taps on the high-resolution touch-screen of the available GPS navigation system and you'll have a copilot across town or across the country. What's more, you'll be able to make hands-free calls with the integrated Bluetooth® phone function.¹

¹ Accessory microphone required.

Enhanced Suspension

Competing on menacing rally courses will teach you a thing or two about handling. The WRX features a 4-wheel independent suspension that's stiffer and more track-ready than ever. Struts in front and a double wishbone design in the rear help devour the world's greatest roads as well as handle the rigors of real-world driving.

Performance-Oriented Interior

The WRX features a cockpit layout designed to complement intense driving. Sport-design instruments deliver key information with maximum efficiency. Front seats designed for performance help keep you in the pocket when g-forces take hold. And the leather-wrapped steering wheel with available controls for the audio system gives you the perfect thing to hang on to.

Satellite Radio

Rock to hip hop. Stand-up comedy to sports commentary. Every WRX is pre-wired for either XM® or SIRIUS® Satellite Radio so you'll be able to enjoy a vast array of digital-quality programming no matter where you are.¹

¹ With your paid subscription and additional equipment. Activation and monthly subscription sold separately.



Amplified Power

Horsepower is only a number. In the case of the 2009 WRX, a very high number. Its smooth-revving SUBARU BOXER engine now produces 265 horsepower, and 244 lb-ft of torque. With the Subaru Active Valve Control System (AVCS), and an advanced intercooler and turbocharger design, the WRX produces the kind of low-end torque that has to be felt to be believed.

Ring-Shaped Reinforcement Frame

Exceptionally strong, the frame design of the WRX is built for safety, but it also enhances handling precision. Its design helps to create body stiffness and to help the vehicle respond swiftly to driver input when hammering into a corner.

WRX STI

Raised on dirt. Eats roads for lunch.

Aero-tuned. Acceleration happy. And oh so electrifying. The WRX STI® is the apex of Subaru high-performance engineering and an icon for racing fans and speed freaks worldwide. Step behind the wheel and on the throttle and you'll experience 15 years of rally racing experience boiled down to 4.7 seconds.¹

¹ 2008 WRX STI. Zero-60 mph. *Motor Trend*, March 2008.



Intense Power

A rush like none other. Turn the key, ignite the power plant and feel the intercooled, high-boost turbocharger spool up to unleash 305 horses, and 290 lb-ft of vicious torque sure to keep you firmly pinned to your seat. The SUBARU BOXER® engine's low-slung and uniquely balanced design keeps all that power poised and agile for precision handling.

Cutting-Edge Control

Experience response and control that's virtually telepathic. Inverted struts up front add stability and cornering precision, and a new rear suspension with double wishbone design helps eat up uneven roads without upsetting the chassis. And fat Brembo® brakes help you keep a leash on all that power and acceleration.

Customized Performance

Inside the STI, with features like a performance instrument panel and steering wheel-mounted controls, you'll experience an interface that's obsessively driver-centric. But the STI puts you in the driver's seat in more ways than one. With the exclusive Driver Controlled Center Differential (DCCD), you can define how Subaru AWD distributes power. Use three distinct automatic modes to fine-tune the system for the road conditions you encounter, or use manual mode to create the handling characteristics you desire.



Championship Bloodline

From radical changes in body style to subtle suspension tweaks, Subaru Tecnica International—the high-performance wing of Subaru—takes the lessons learned in the crucible of rally competition and applies them to its signature model, the WRX STI. Each stage in the evolution of this model reflects what's needed on the racecourse to stay competitive in the most demanding motorsport around.

Your Subaru will be a vehicle you can love for years to come. It’s a promise attested to by the fact that 95% of Subaru vehicles sold in the past ten years are still on the road today.¹ **Love. It’s what makes a Subaru, a Subaru.**



Subaru Added Security

It’s possibly the most important option you choose. Protect your investment with a Subaru® Added Security® extended service contract—the only one backed by Subaru of America, Inc. Ask your salesperson for coverage details and assistance in selecting the plan that’s best for you—up to 7 years or 100,000 miles.

Subaru.com

Begin your Subaru experience right in your own home. Here, you can find extensive information, including specs, photos and reviews. Build your own Subaru, locate dealers, and schedule a test drive. After your purchase, activate your free My.Subaru site, where Subaru owners can track their vehicles’ service histories, schedule service appointments, receive special offers exclusive to My.Subaru members, and much more.

The Subaru Roadside Assistance Program

This comprehensive package covers all 2009 Subaru vehicles during the first 3 years or 36,000 miles, whichever comes first. By calling the toll-free number in the Owner’s Information Kit, Subaru owners can take advantage of any of the following benefits:

- 24-Hour Roadside Assistance, seven days a week, 365 days a year, throughout the United States.
- Emergency Towing Service to the nearest authorized Subaru dealer.
- Emergency Roadside Assistance for jump starts, gasoline (up to two gallons), flat tire change, emergency lockout service (lost key or key is locked in the vehicle), and emergency fluid replacement.

Powertrain Limited Warranty

5 years or 60,000 miles, whichever comes first.

Rust Perforation Limited Warranty

5 years, unlimited mileage.

New Car Limited Warranty

3 years or 36,000 miles, whichever comes first.

Wear Item Limited Warranty

3 years or 36,000 miles, whichever comes first. We cover you where others don’t. Repairs to the following items will also be covered under warranty:

- Brake Pads
- Wiper Blades
- Clutch Linings
- Transmitter Batteries

Insurance Privileges for Subaru Owners

The driving experience is only one of the benefits of Subaru ownership. Through Subaru Advantage Insurance by Liberty Mutual, Subaru owners may be eligible for an exclusive rate on auto and home insurance just for owning a Subaru. To learn more about Subaru Advantage Insurance and the special features designed for Subaru owners, visit subaru.com.

Model Overview

TRIBECA®	TRIBECA, TRIBECA SPECIAL EDITION AND TRIBECA LIMITED	
 <small>Tribeca Limited in Newport Blue Pearl.</small>	SPECIFICATIONS <ul style="list-style-type: none">• 256-hp 3.6-liter 6-cylinder SUBARU BOXER® engine• Subaru Symmetrical All-Wheel Drive (AWD)• 16 city/21 highway mpg¹• 5-speed SPORTSHIFT® automatic transmission• VDC electronic stability control• Front, side and side-curtain airbags (SRS)²	TRIBECA SPECIAL EDITION FEATURES <ul style="list-style-type: none">• Leather-trimmed upholstery• Heated power front seats with lumbar adjustment and 2-position driver’s seat memory• Rear cabin air conditioner• 3rd-row seats with 50/50-split flat-folding seatbacks
	TRIBECA FEATURES <ul style="list-style-type: none">• Dual-zone automatic climate control system• 6-speaker audio system with XM® or SIRIUS® Satellite Radio capability³• Integrated key fob• 60/40-split sliding 2nd-row seats with fore/aft travel• 40/20/40-split flat-folding 2nd-row seatbacks• 3rd-row seats with 50/50-split flat-folding seatbacks	TRIBECA LIMITED FEATURES <ul style="list-style-type: none">• Leather-trimmed upholstery• Heated power front seats with lumbar adjustment and 2-position driver’s seat memory• 9-speaker premium audio system with XM or SIRIUS Satellite Radio capability³• Touch-screen GPS navigation system with rear-vision camera and XM Satellite Radio⁴• Rear-seat DVD entertainment system• 3rd-row seats with 50/50-split flat-folding seatbacks• Power tilt/sliding-glass moonroof
OUTBACK®	2.5i, 2.5i SPECIAL EDITION AND 2.5i LIMITED	
 <small>Outback 2.5XT Limited in Diamond Gray Metallic/Quartz Silver Metallic.</small>	SPECIFICATIONS <ul style="list-style-type: none">• 170-hp 2.5-liter 4-cylinder SUBARU BOXER engine• Subaru Symmetrical All-Wheel Drive (AWD)• 20 city/27 highway mpg¹ (manual transmission)• 5-speed manual or 4-speed SPORTSHIFT automatic transmission• VDC electronic stability control• Front, side and side-curtain airbags (SRS)²	2.5i SPECIAL EDITION FEATURES <ul style="list-style-type: none">• Cloth upholstery• 8-way power driver’s seat• Heated front seats• 440-watt 9-speaker Harman Kardon® premium audio system• Heated side mirrors and windshield wiper de-icer• Foglights
	2.5i FEATURES <ul style="list-style-type: none">• Cloth upholstery• 6-speaker audio system with auxiliary audio jack• 12-volt power outlets• Cargo-area underfloor storage• Roof rails	2.5i LIMITED FEATURES <ul style="list-style-type: none">• Leather-trimmed upholstery• 440-watt 9-speaker Harman Kardon premium audio system• Leather-wrapped steering wheel with audio system and cruise control buttons• Dual-zone automatic climate control system• Panoramic power tilt/sliding moonroof
2.5XT LIMITED		
SPECIFICATIONS <ul style="list-style-type: none">• 243-hp 2.5-liter intercooled, turbocharged 4-cylinder SUBARU BOXER engine• Subaru Symmetrical All-Wheel Drive (AWD)• Subaru Intelligent Drive (SI-DRIVE)• 18 city/24 highway mpg¹• 5-speed manual or 5-speed SPORTSHIFT automatic transmission• VDC electronic stability control• Front, side and side-curtain airbags (SRS)²		FEATURES <ul style="list-style-type: none">• Leather-trimmed upholstery• Heated power front seats• 440-watt 9-speaker Harman Kardon premium audio system• Dual-zone automatic climate control system• Leather-wrapped steering wheel with SI-DRIVE and multifunction display controls• Touch-screen GPS navigation system• Panoramic power tilt/sliding moonroof
3.0R LIMITED		
SPECIFICATIONS <ul style="list-style-type: none">• 245-hp 3.0-liter 6-cylinder SUBARU BOXER engine• Subaru Symmetrical All-Wheel Drive (AWD)• Subaru Intelligent Drive (SI-DRIVE)• 17 city/24 highway mpg¹• 5-speed SPORTSHIFT automatic transmission• VDC electronic stability control• Front, side and side-curtain airbags (SRS)²		FEATURES <ul style="list-style-type: none">• Leather-trimmed upholstery• Heated power front seats• 440-watt 9-speaker Harman Kardon premium audio system• Dual-zone automatic climate control system• Leather-wrapped steering wheel with SI-DRIVE and multifunction display controls• Touch-screen GPS navigation system• Panoramic power tilt/sliding moonroof

Some features may be standard or optional depending on model and trim level. Please see your dealer or log on to subaru.com for more information.

¹ Based on R. L. Polk & Co. registration data in the U.S. 1998 to July 2007.

Model Overview

LEGACY®	2.5i, 2.5i SPECIAL EDITION AND 2.5i LIMITED	
 <p>Legacy 2.5GT Limited in Diamond Gray Metallic.</p>	SPECIFICATIONS <ul style="list-style-type: none">• 170-hp 2.5-liter 4-cylinder SUBARU BOXER® engine• Subaru Symmetrical All-Wheel Drive (AWD)• 20 city/27 highway mpg¹ (manual transmission)• 5-speed manual or 4-speed SPORTSHIFT® automatic transmission• VDC electronic stability control• Front, side and side-curtain airbags (SRS)²	FEATURES <ul style="list-style-type: none">• Cloth or leather-trimmed upholstery• 8-way power driver's seat• Heated front seats• 385-watt 9-speaker Harman Kardon® premium audio system• Dual-zone automatic climate control system• Power tilt/sliding moonroof
	2.5GT LIMITED AND 2.5GT SPEC.B	
	SPECIFICATIONS <ul style="list-style-type: none">• 243-hp 2.5-liter intercooled, turbocharged 4-cylinder SUBARU BOXER engine• Subaru Symmetrical All-Wheel Drive (AWD)• Subaru Intelligent Drive (SI-DRIVE)• 18 city/25 highway mpg¹ (2.5GT Ltd. with manual transmission)• 5-speed manual or 5-speed SPORTSHIFT automatic transmission (2.5GT Limited)• 6-speed manual transmission(2.5GT spec.B)• Bilstein® sport-tuned suspension(2.5GT spec.B)• VDC electronic stability control⁵• Front, side and side-curtain airbags (SRS)²	FEATURES <ul style="list-style-type: none">• Leather-trimmed upholstery• Performance-design power front seats• Heated front seats• 385-watt 9-speaker Harman Kardon premium audio system• Dual-zone automatic climate control system• Touch-screen GPS navigation system• Heated side mirrors and windshield wiper de-icer• Power tilt/sliding moonroof
	3.0R AND 3.0R LIMITED	
	SPECIFICATIONS <ul style="list-style-type: none">• 245-hp 3.0-liter 6-cylinder SUBARU BOXER engine• Subaru Symmetrical All-Wheel Drive (AWD)• Subaru Intelligent Drive (SI-DRIVE)• 17 city/24 highway mpg¹• 5-speed SPORTSHIFT automatic transmission• Bilstein® sport-tuned suspension (3.0R Limited)• VDC electronic stability control• Front, side and side-curtain airbags (SRS)²	FEATURES <ul style="list-style-type: none">• Cloth or leather-trimmed upholstery• Performance-design heated 8-way power driver's seat• 385-watt 9-speaker Harman Kardon premium audio system• Dual-zone automatic climate control system• Touch-screen GPS navigation system• SPORTSHIFT transmission paddle shifters• Power tilt/sliding moonroof
FORESTER®	2.5X, 2.5X PREMIUM AND 2.5X LIMITED	
 <p>Forester 2.5X in Newport Blue Pearl.</p>	SPECIFICATIONS <ul style="list-style-type: none">• 170-hp 2.5-liter 4-cylinder SUBARU BOXER engine• Subaru Symmetrical All-Wheel Drive (AWD)• 20 city/27 highway mpg¹ (manual transmission)• 5-speed manual or 4-speed SPORTSHIFT automatic transmission• VDC electronic stability control• Front, side and side-curtain airbags (SRS)²	2.5X PREMIUM FEATURES <ul style="list-style-type: none">• Cloth upholstery• Multifunction steering wheel• Reclining rear seats• Retractable rear tray• Panoramic power sliding moonroof
	2.5X FEATURES <ul style="list-style-type: none">• Cloth upholstery• 4-speaker audio system with auxiliary audio jack• Multifunction center console with sliding armrest• Cargo-area underfloor storage and grocery bag, tiedown and upper utility hooks	2.5X LIMITED FEATURES <ul style="list-style-type: none">• Leather-trimmed upholstery• 6-speaker audio system with SRS Circle Surround Automotive® audio enhancement• Automatic climate control system• Leather-wrapped multifunction steering wheel• Panoramic power sliding moonroof
	2.5XT AND 2.5XT LIMITED	
	SPECIFICATIONS <ul style="list-style-type: none">• 224-hp 2.5-liter intercooled, turbocharged 4-cylinder SUBARU BOXER engine• Subaru Symmetrical All-Wheel Drive (AWD)• 19 city/24 highway mpg¹• 4-speed SPORTSHIFT automatic transmission• VDC electronic stability control• Front, side and side-curtain airbags (SRS)²	FEATURES <ul style="list-style-type: none">• Leather-trimmed upholstery• 10-way power adjustable driver's seat• 6-speaker audio system with SRS Circle Surround Automotive® audio enhancement• Automatic climate control system• Multifunction steering wheel• Rear spoiler• Panoramic power sliding moonroof

IMPREZA®	2.5i, 2.5i PREMIUM, OUTBACK SPORT® AND 2.5GT	
 <p>Impreza 2.5GT in Spark Silver Metallic.</p>	2.5i AND OUTBACK SPORT SPECIFICATIONS <ul style="list-style-type: none">• 170-hp 2.5-liter 4-cylinder SUBARU BOXER engine• Subaru Symmetrical All-Wheel Drive (AWD)• 20 city/27 highway mpg¹ (manual transmission)• VDC electronic stability control• 5-speed manual or 4-speed SPORTSHIFT automatic transmission• Front, side and side-curtain airbags (SRS)²	2.5i, 2.5i PREMIUM AND OUTBACK SPORT FEATURES <ul style="list-style-type: none">• Cloth or Tricot upholstery• 10-speaker audio system with SRS Circle Surround Automotive audio enhancement• Leather-wrapped multifunction steering wheel• Touch-screen navigation system with SIRIUS® Satellite Radio⁴• Power tilt/sliding moonroof
	2.5GT SPECIFICATIONS <ul style="list-style-type: none">• 224-hp 2.5-liter intercooled, turbocharged 4-cylinder SUBARU BOXER engine• Subaru Symmetrical All-Wheel Drive (AWD)• 19 city/24 highway mpg¹• 4-speed SPORTSHIFT automatic transmission• Sport-tuned suspension• VDC electronic stability control• Front, side and side-curtain airbags (SRS)²	2.5GT FEATURES <ul style="list-style-type: none">• Cloth upholstery• Heated front seats• 10-speaker audio system with SRS Circle Surround Automotive audio enhancement• Automatic climate control system• Leather-wrapped multifunction steering wheel• Power tilt/sliding moonroof
	WRX®, WRX PREMIUM AND WRX STI®	
	WRX SPECIFICATIONS <ul style="list-style-type: none">• 265-hp 2.5-liter intercooled, turbocharged 4-cylinder SUBARU BOXER engine• Subaru Symmetrical All-Wheel Drive (AWD)• 18 city/25 highway mpg¹• Sport-tuned suspension• 5-speed manual transmission• VDC electronic stability control• Front, side and side-curtain airbags (SRS)²	WRX FEATURES <ul style="list-style-type: none">• Performance-design front seats with red stitching• 10-speaker audio system with SRS Circle Surround Automotive audio enhancement• Automatic climate control system• Leather-wrapped multifunction steering wheel with red stitching• Touch-screen navigation system with SIRIUS Satellite Radio⁴• Power tilt/sliding moonroof
	WRX STI SPECIFICATIONS <ul style="list-style-type: none">• 305-hp 2.5-liter intercooled, turbocharged 4-cylinder SUBARU BOXER engine• Subaru Symmetrical All-Wheel Drive (AWD) with Driver Controlled Center Differential (DCCD)• Subaru Intelligent Drive (SI-DRIVE)• 17 city/23 highway mpg¹• High-performance sport-tuned suspension• Brembo® performance brake system• 6-speed manual transmission• VDC electronic stability control with performance Traction mode• Front, side and side-curtain airbags (SRS)²	WRX STI FEATURES <ul style="list-style-type: none">• Alcantara®/leather-trimmed upholstery• STI-design front seats• 10-speaker audio system with Audyssey MultEQ® audio enhancement• Automatic climate control system• STI-design multifunction steering wheel• Touch-screen navigation system• STI high-performance-tuned exhaust system with quad outlets• 18-inch BBS® 18-spoke aluminum-alloy wheels
	Some features may be standard or optional depending on model and trim level. Please see your dealer or log on to subaru.com for more information.	

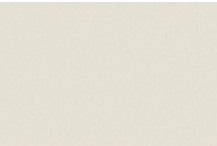
¹ 2009 EPA fuel economy estimates. Actual mileage may vary. ² The Supplemental Restraint System (SRS) affords the driver and the front passenger additional protection in moderate to severe frontal and side-impact collisions and outboard 2nd-row passengers additional protection in moderate to severe side-impact collisions. This system provides supplemental protection only, and seatbelts must be worn in order to avoid injuries to out-of-position occupants upon airbag deployment and to provide the best combined protection in a serious accident. Children should always be properly restrained in one of the rear seats. See Owner's Manual for recommended seating position. ³ With your paid subscription and additional equipment. ⁴ XM or SIRIUS Satellite Radio hardware (depending on model) included when equipped with optional navigation system. Activation and monthly subscription sold separately. See your dealer. ⁵ Not available on 2.5GT Limited with manual transmission.

Some images shown are for illustration purposes only. Specifications in this brochure are based on the latest product information available at the time of publication. For the most up-to-date product information, log on to subaru.com. Some equipment shown in photography in this brochure is optional at extra cost. Specific options may be available only in combination with other options. Specific combinations of equipment or features may vary from time to time and by geographic area. Certain accessories and equipment may not be available at the time of publication. Subaru of America, Inc., reserves the right to change or discontinue at any time, without notice, prices, colors, materials, equipment, accessories, specifications, models and packages without incurring any obligation to make the same or similar changes on vehicles previously sold. Colors shown may vary due to reproduction and printing processes.

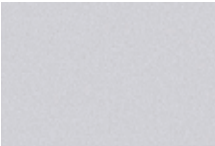
This brochure was prepared by Subaru of America, Inc. A warranty from Subaru of America, Inc., is available only on cars sold to the first retail purchaser through an authorized Subaru dealer in the continental U.S. or Alaska. Subaru, SUBARU BOXER, Added Security, Forester, Impreza, Legacy, Outback, Outback Sport, STI, Tribeca and WRX are registered trademarks. SPORTSHIFT is a registered trademark of Prodrive Ltd. SmartWay is a registered trademark of the U.S. Environmental Protection Agency. iPod is a registered trademark of Apple Inc. Harman Kardon is a registered trademark of Harman International Industries, Inc. Bilstein is a registered trademark of ThyssenKrupp Bilstein of America. SRS Circle Surround Automotive is a registered trademark of SRS Labs, Inc. Audyssey MultEQ is a registered trademark of Audyssey Laboratories, Inc. Bluetooth is a registered trademark of Bluetooth SIG, Inc. BBS is a registered trademark of BBS Kraftfahrzeugtechnik AG. Brembo is a registered trademark of Freni Brembo S.p.A. Alcantara is a registered trademark of Alcantara S.p.A. and Alcantara is produced by Toray Group. SIRIUS is a registered trademark of Sirius Satellite Radio Inc. XM is a registered trademark of XM Satellite Radio Inc. For more information, contact your Subaru dealer or log on to subaru.com.

Paint Colors

SINGLE-TONE



Satin White Pearl



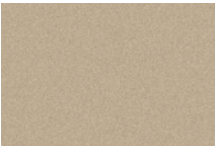
Spark Silver Metallic



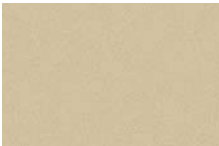
Quartz Silver Metallic



Steel Silver Metallic



Harvest Gold Metallic



Topaz Gold Metallic



Sunlight Gold Opal



Seacrest Green Metallic



Sage Green Metallic



Paprika Red Pearl



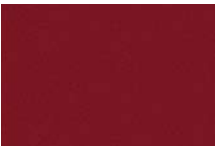
Lightning Red



WR Blue Mica



Newport Blue Pearl



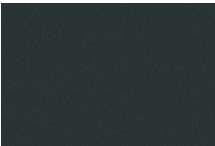
Camellia Red Pearl



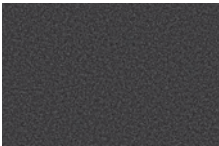
Ruby Red Pearl



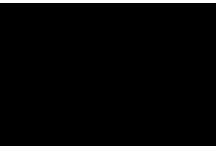
Deep Bronze Metallic



Dark Gray Metallic

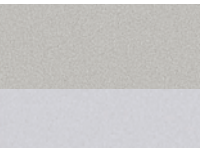


Diamond Gray Metallic

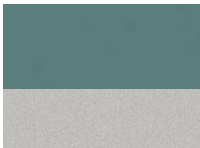


Obsidian Black Pearl

TWO-TONE



Steel Silver Metallic/
Spark Silver Metallic



Sage Green Metallic/
Steel Silver Metallic



Newport Blue Pearl/
Steel Silver Metallic



Newport Blue Pearl/
Quartz Silver Metallic



Diamond Gray Metallic/
Quartz Silver Metallic



Obsidian Black Pearl/
Dark Gray Metallic

SINGLE-TONE	TRIBECA	OUTBACK	LEGACY	IMPENZA	FORESTER
Satin White Pearl	●	●	●	●	●
Spark Silver Metallic	–	–	–	●	●
Quartz Silver Metallic	●	●	●	–	–
Steel Silver Metallic	–	–	–	–	●
Harvest Gold Metallic	●	●	–	–	–
Topaz Gold Metallic	–	–	–	–	●
Sunlight Gold Opal	–	–	–	●	–
Seacrest Green Metallic	–	●	●	–	–
Sage Green Metallic	–	–	–	–	●
Paprika Red Pearl	–	–	–	●	–
Lightning Red	–	–	–	●	–
WR Blue Mica	–	–	–	●	–
Newport Blue Pearl	●	–	●	●	●
Camellia Red Pearl	–	–	–	–	●
Ruby Red Pearl	●	–	●	–	–
Deep Bronze Metallic	●	●	●	–	–
Dark Gray Metallic	–	–	–	●	●
Diamond Gray Metallic	●	–	●	–	–
Obsidian Black Pearl	●	●	●	●	●

TWO-TONE	TRIBECA	OUTBACK	LEGACY	IMPENZA	FORESTER
Steel Silver Metallic/Spark Silver Metallic	–	–	–	●	–
Sage Green Metallic/Steel Silver Metallic	–	–	–	●	–
Newport Blue Pearl/Steel Silver Metallic	–	–	–	●	–
Newport Blue Pearl/Quartz Silver Metallic	–	●	–	–	–
Diamond Gray Metallic/Quartz Silver Metallic	–	●	–	–	–
Obsidian Black Pearl/Dark Gray Metallic	–	–	–	●	–

● Standard – Not available

Upholstery

CLOTH



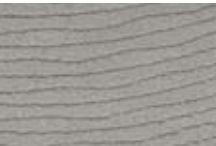
Ivory Cloth



Ivory Tricot



Aurora Platinum Cloth



Platinum Dune Cloth



Warm Ivory Cloth



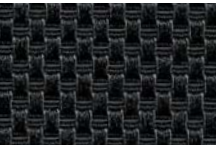
Aurora Black Cloth



Slate Gray Cloth



Carbon Black Cloth



Carbon Black
Checkered Cloth



Carbon Black Tricot



Off-Black Cloth

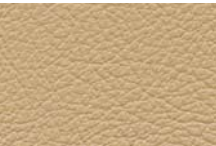


Black Dune Cloth

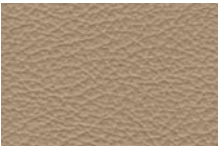
CLOTH	TRIBECA	OUTBACK	LEGACY	IMPENZA	FORESTER
Ivory Cloth	–	–	–	●	–
Ivory Tricot	–	–	–	●	–
Aurora Platinum Cloth	–	–	–	–	●
Platinum Dune Cloth	–	–	–	–	●
Warm Ivory Cloth	–	●	●	–	–
Aurora Black Cloth	–	–	–	–	●
Slate Gray Cloth	●	–	–	–	–
Carbon Black Cloth	–	–	–	●	–
Carbon Black Checkered Cloth	–	–	–	●	–
Carbon Black Tricot	–	–	–	●	–
Off-Black Cloth	–	●	●	–	–
Black Dune Cloth	–	–	–	–	●

● Standard – Not available

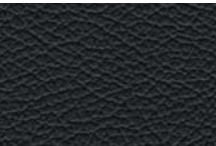
LEATHER AND ALCANTARA®



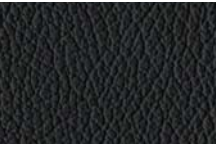
Desert Beige Leather



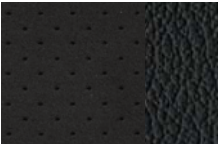
Warm Ivory Leather



Slate Gray Leather



Off-Black Leather



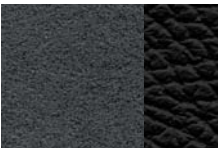
Off-Black
Alcantara/Leather



Black Leather



Platinum Leather



Graphite Gray Alcantara/
Carbon Black Leather

LEATHER AND ALCANTARA	TRIBECA	OUTBACK	LEGACY	IMPENZA	FORESTER
Desert Beige Leather	●	–	–	–	–
Warm Ivory Leather	–	●	●	–	–
Slate Gray Leather	●	–	–	–	–
Off-Black Leather	–	●	●	–	–
Off-Black Alcantara/Leather	–	–	●	–	–
Black Leather	–	–	–	–	●
Platinum Leather	–	–	–	–	●
Graphite Gray Alcantara/Carbon Black Leather	–	–	–	●	–

● Standard – Not available