

2007 SUBARU
LEGACY





THINK

WHAT MAKES A SUBARU, A SUBARU?

It is a heritage of innovation and spirited performance. A dedication to keeping you safe, with a driving experience that not only invigorates, but protects. A commitment to building vehicles that fit your life with smart and efficient engineering. In creating a car that is as graceful as it is thrilling, we remain focused on these ideals. Because we never stop thinking of vehicles that go beyond your expectations.



Legacy 2.5 GT spec. B Sedan shown in Diamond Gray Metallic.



HEATED FRONT SEATS The Legacy is designed to provide thoughtful comfort. Shivering on cold mornings while waiting for the cabin to warm up becomes a thing of the past with available heated front seats. The 4-stage setting lets you choose the precise temperature for ideal comfort.

AUXILIARY AUDIO JACK FOR MEDIA PLAYERS Standard on all Legacy models, you can keep your personal playlists handy accessible with the new auxiliary audio jack, which will accommodate your iPod® or virtually any portable media player. Just plug it in and your tunes will flow through the speakers.

ELECTROLUMINESCENT GAUGES Legacy is engineered to be invigorating even before you take to the road. Start the engine and the instrument cluster leaps to life with a full sweep of the dials. And the available electroluminescent gauges always remain easy to read, no matter what the lighting condition is outside.

Legacy 2.5 GT Limited Sedan shown with Charcoal Gray leather, optional automatic transmission and navigation system.

The Subaru LEGACY Style that's abundant with substance.

As its name suggests, the Legacy is endowed with years of heritage and development. Yet it also embodies our latest innovation and technology. It engages the driving enthusiast and keeps you in control with a balanced boxer engine, the stability of Subaru Symmetrical All-Wheel Drive and a nimble sport-tuned suspension. Reassures the rational side with its class-leading safety scores. And invites the touch with an interior rich in refinement. All creating a sport sedan and wagon to stimulate the mind. And tempt the heart.

2.5i | Sedan and Wagon

Powered by a 175-hp engine, the 2.5i offers performance, value and a full complement of safety features.

2.5i SPECIAL EDITION | Sedan and Wagon

All of the amenities of the 2.5i, plus a power moonroof and the convenience of an 8-way power driver's seat.

2.5i LIMITED | Sedan and Wagon

Enjoy the added luxury of leather-trimmed seats, heated front seats, a 6-disc in-dash CD changer, dual-zone automatic climate control and standard automatic transmission.

2.5 GT LIMITED | Sedan and Wagon

Fully loaded with perforated-leather-trimmed performance-design front seats, it's motivated by 243 turbocharged horsepower moderated by the new Subaru Intelligent Drive (SI-DRIVE) performance management system.



2.5 GT spec. B | Sedan

The spec. B elevates Legacy to a new level with performance-enhanced suspension, SI-DRIVE, Vehicle Dynamics Control (VDC) and a 6-speed manual transmission.



Zero to 60.

FEEL

And all the emotions in between.



Legacy 2.5 GT spec. B Sedan shown with Charcoal Gray leather/Dusk Blue Alcantara®.

2.5 GT SPEC. B SEDAN You'll know the spec. B is something special when you see the exclusive 18-inch aluminum-alloy wheels and unique ground effects. Step inside to find a one-of-a-kind atmosphere enhanced by Charcoal Gray leather-trimmed upholstery with Dusk Blue Alcantara inserts. And aggressively bolstered front seats provide maximized support during cornering.

STEERING-WHEEL-MOUNTED AUDIO CONTROLS Convenience at the tips of your fingers. Raise or lower the volume, change the station, or flip through the tracks, all without the distraction of taking your eyes away from the road. The steering-wheel-mounted audio controls let you manage it all while keeping your hands in their proper driving positions.



6-SPEED MANUAL TRANSMISSION The top gear. One extra to take full advantage of every horsepower, and wring out every last drop of performance. The 6-speed manual of the 2.5 GT spec. B. is designed for optimum performance to take maximum advantage of the engine's output, while the shifter has been engineered for faster, more positive shifts.



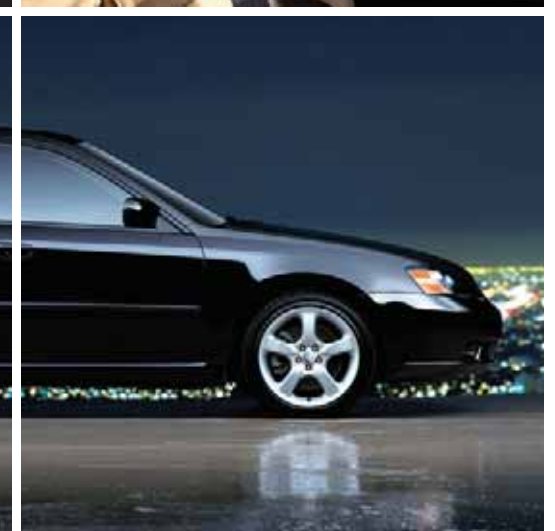
INTERIOR | VERSATILITY Step inside the Subaru Legacy to find a world built to indulge the driver and passengers. You'll find a cockpit designed to put every control within intuitive reach, premium materials on every surface and an available moonroof to let in the sunshine and fresh air. Six optimally placed speakers impart multilayered audio output from your favorite CD, while the available SRS WOW™ 3D audio enhancement dazzles you with its full, rich output. And the versatility of the seating and cargo area lets you bring along everything you want to seek new destinations, and all the twisty ways there.

NAVIGATION SYSTEM The available navigation system guides the way across town, across state lines or across the country. And you can access it all with some simple taps on the easy-to-use touch-screen. It also provides audio readouts and a trip computer with info on fuel economy, driving distance, maintenance reminders, a calendar, calculator and controls for vehicle settings.

60/40-SPLIT FOLDING REAR SEATS Offering high levels of flexibility, both the Legacy wagon and sedan let you transport a myriad of differently sized objects. Put both rear seatbacks of the 60/40-split seats up to carry up to three passengers. It also allows for two passengers and a long article, or one passenger and gear for the entire team. Or fold both rear seatbacks for full access to the cargo or trunk area.

XM® SATELLITE RADIO Listen to rock, jazz, classical or any channel in digital-quality sound, wherever your journey may take you. Every Legacy is prewired for satellite radio that lets you access over 170 channels of XM feed (with your paid subscription and additional equipment).





Legacy 2.5 GT Limited Sedan shown in Brilliant Silver Metallic.



CONFIDENCE TO SET YOUR OWN COURSE.

The Legacy can put you on the road to exhilaration by the most reassuring means possible. Because trademark innovations like our standard Subaru Symmetrical All-Wheel Drive and boxer engine not only give you traction and stability for active driving, but also active safety to help steer clear of an accident altogether. With advancements to protect you in an unavoidable collision, it's the kind of safety that lets you drive with confidence.

It's what makes a Subaru, a Subaru.

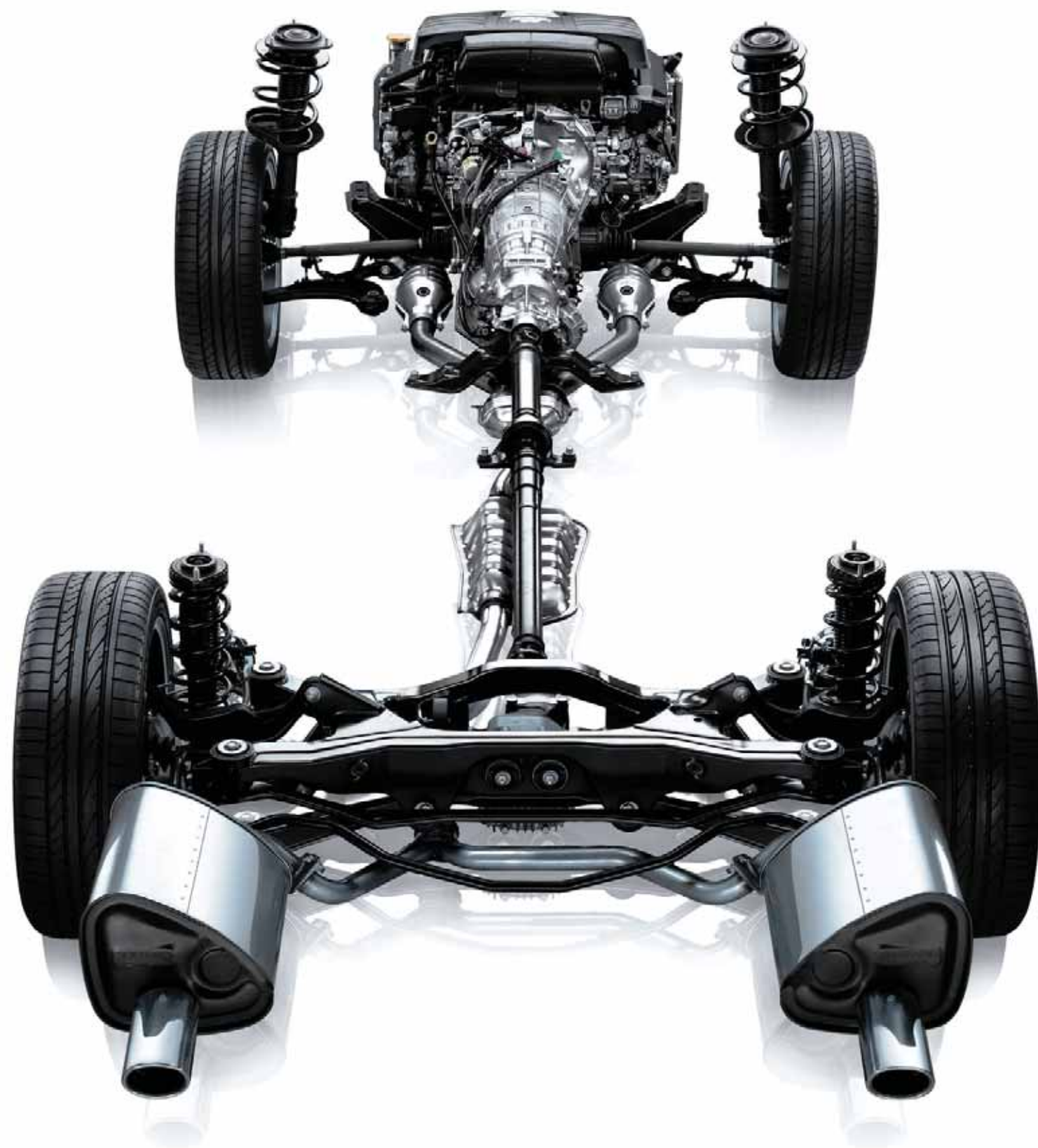
Every Subaru was designed to achieve the highest crash test scores in its class. But to help keep you from having to test it out yourself, we engineered the Legacy to provide stability, control and agile handling characteristics. Then we equipped it with active safety features that help you

to negotiate an unexpected situation. In the event of an impact, its numerous passive safety systems help to minimize the results of the encounter. It all adds up to a multidimensional approach to safety that results not only from selected features, but every aspect of the vehicle.

Gold Top Safety Pick: The Highest Rating for front, side and rear crash tests.¹

- Insurance Institute for Highway Safety (IIHS)

¹ For more information, contact the Insurance Institute for Highway Safety or visit their website at www.iihs.org.



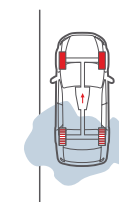
Subaru Symmetrical All-Wheel Drive

Knowledge that your tires are gripping, not slipping. It's instrumental in finding the assurance to tackle that curve with all the verve that makes an exhilarating driving experience. The unique Subaru Symmetrical All-Wheel Drive system delivers traction that you can depend on. Its ideal balance helps to ensure stability and poise. And its efficiency at transmitting power delivers greater grip and quick response to slippage. Providing you with better handling in slick conditions, and intensified performance in any condition. It's a system that puts you in control of the road, and possibly your well-being.

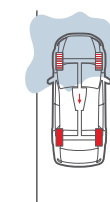
MORE PREDICTABLE TRACTION

IT'S WHAT MAKES A SUBARU, A SUBARU.

CONTINUOUS AWD Legacy models equipped with the 5- or 6-speed manual transmissions use a viscous-locking center differential. Should wheel slippage occur, it helps transfer power to the wheels with the most traction.



ACTIVE AWD Paired with the 4-speed automatic, the Active AWD system monitors parameters such as wheel slippage and vehicle speed, actively adjusting power to the front or rear wheels for optimal adhesion.



VTD AWD The 2.5 GT Limited with 5-speed automatic uses Variable Torque Distribution (VTD) that normally splits power 45% front and 55% rear for a sporty feel, and dynamically reappor-tions torque for maximum grip.





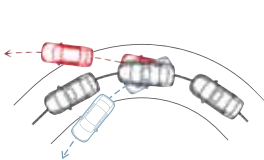
Legacy 2.5i Special Edition Sedan shown in Obsidian Black Pearl.

HANDLING The joy of driving goes beyond horsepower. It's in piloting a car that feels like an extension of yourself. One that exhibits quick reflexes and unfazed predictability through S-curves, hairpins, switchbacks. That's why every chassis component of the Legacy, with its precise rack-and-pinion steering, rigid and lightweight body structure, 4-wheel disc brakes and independent suspension, is geared toward one goal—driving pleasure.

2.5 GT SPEC. B Delivering all the excitement of the Legacy 2.5 GT Limited, the 2.5 GT spec. B takes it a step beyond with Bilstein® sport suspension with inverted struts in front. Aluminum components to help reduce unsprung weight. Vehicle Dynamics Control (VDC) to help the spec. B stay true to its course. A 6-speed manual transmission to make the most of every horsepower. And it rides

on spec. B-only 18-inch 10-spoke aluminum-alloy wheels with wide, sticky tires with a Tire Pressure Monitoring System (TPMS) to let you know when they aren't optimally inflated, so that you can correct the situation as soon as possible. All working together to connect you to the road like never before. It's the most exhilarating Legacy, ever.

VEHICLE DYNAMICS CONTROL The available stability control system helps keep you on your intended path by measuring variables such as steering input, braking and vehicle angle. Sensing any deviation that causes the vehicle to stray from your intended course, VDC applies individual brakes and/or reduces engine power to help counteract the motion and help keep you safely in control.



SUSPENSION Years of insight gained from intense world-rally championships, coupled with the daily rigors of real-world driving, went into the development of our 4-wheel independent suspension. The result is the responsiveness and communicative nature of a precision-tuned vehicle. Yet it provides a supple, fluid ride, minimizing jostling over blemished pavement. Impeccable road manners, with enough verve to take on the curves.



Subaru Boxer Engine It's what makes a Subaru, a Subaru.

Press the accelerator to get outstanding power, along with a healthy dose of innovation. At the heart of the Legacy is our legendary SUBARU BOXER engine, with pistons laid flat in horizontal opposition. Used in every Subaru, this design

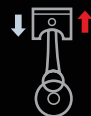
lowers the center of gravity, promoting precise handling and enhanced stability, while increasing durability and reducing vibration. It's the force that gives you greater control, and greater safety.



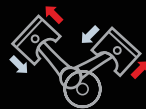
LESS VIBRATION The 180-degree boxer engine layout allows the pistons to move in exact horizontal opposition, effectively negating the vibrations of the opposing pistons. Its smoothness not only sweetens power delivery, it also helps increase longevity.



SUBARU BOXER ENGINE

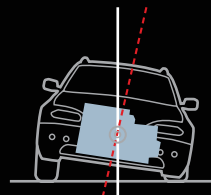
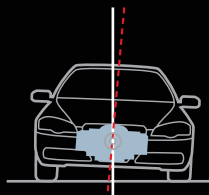


INLINE ENGINE



V-TYPE ENGINE

GREATER STABILITY The SUBARU BOXER engine's lightweight, compact design lowers the vehicle center of gravity. Providing more stable handling characteristics to better keep the car along its intended path, especially when changing direction quickly.



ENGINE The roots of Subaru heritage lie in the aviation industry. It is this experience that allows us to recognize and optimize the inherent advantages of the horizontally opposed boxer engine configuration. With its compactness, superior performance, inherent smoothness and reliability, it is a design that Subaru has continually refined for almost 40 years. And it remains the only configuration worthy of meeting our standards.

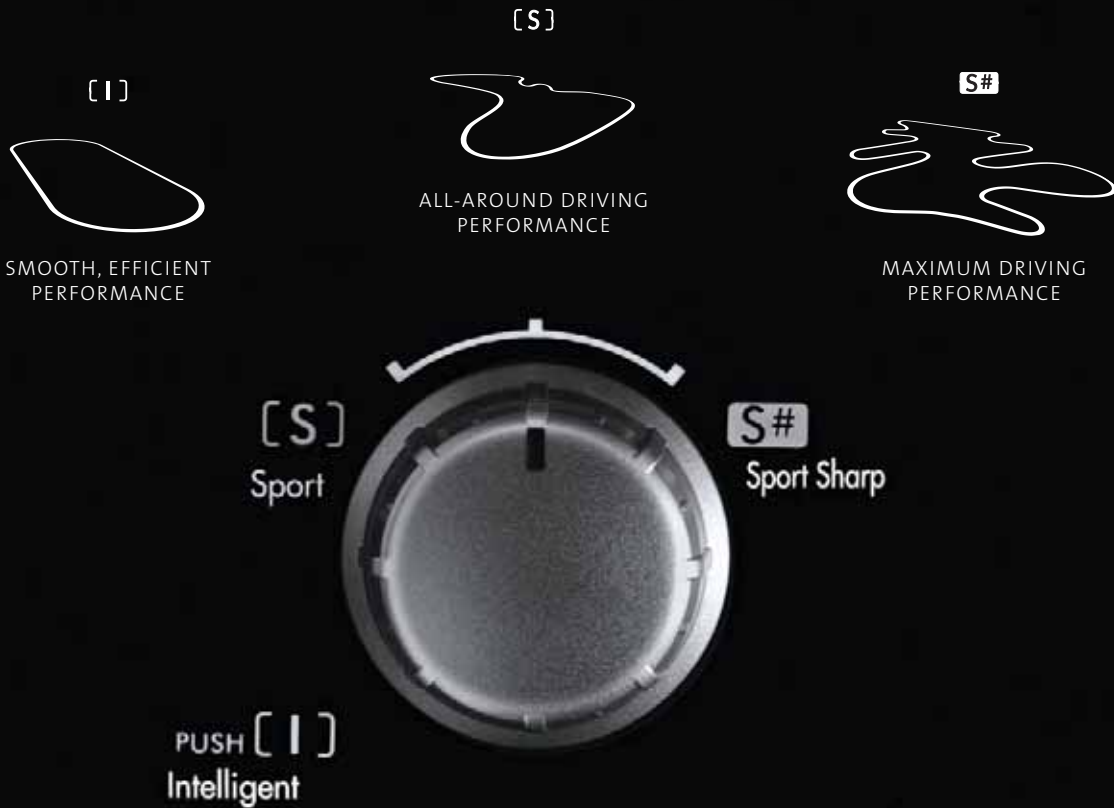


2.5i The aluminum-alloy 2.5-liter 4-cylinder engine utilizes computer-controlled i-Active Valve Lift System that delivers 175-horsepower and broadens the torque curve. Yet it meets one of the strictest emissions standards for gasoline engines¹, while providing a superior fuel economy of 23 city/30 highway mpg.²

¹ When equipped to meet the California-certified Partial Zero Emission Vehicle (PZEV) standard.
² With automatic transmission. ³ 2006 Legacy 2.5 GT spec.B Sedan. *Road & Track*, March 2006

2.5 GT LIMITED AND 2.5 GT SPEC.B The intercooled turbocharger raises horsepower to 243 and torque to a potent 241. It's capable of launching the Legacy 2.5 GT spec.B from 0 to 60 in 5.1 seconds.³ And the Active Valve Control System improves breathability for more power throughout the rev range.

SI-DRIVE Maximize engine performance and efficiency with a mere turn of the rotary. The new Subaru Intelligent Drive (SI-DRIVE) system of the 2.5 GT Limited and 2.5 GT spec.B controls performance characteristics to suit your driving needs—or desires. Put it in Intelligent mode for smoother response and fuel efficiency. Dial it up to Sport for quick throttle feedback and linear acceleration. For full-on propulsion, the Sport Sharp mode delivers more power sooner, greater low-end thrust and maximum enjoyment. Apparently, grins can be switched on.



HOW FAST DO YOU WANT TO GO TODAY?

AUTOMATIC TRANSMISSION The available 4-speed automatic features SPORTSHIFT manual control for greater involvement. Available on 2.5 GT Limited is a 5-speed automatic with steering-wheel-mounted SPORTSHIFT buttons.

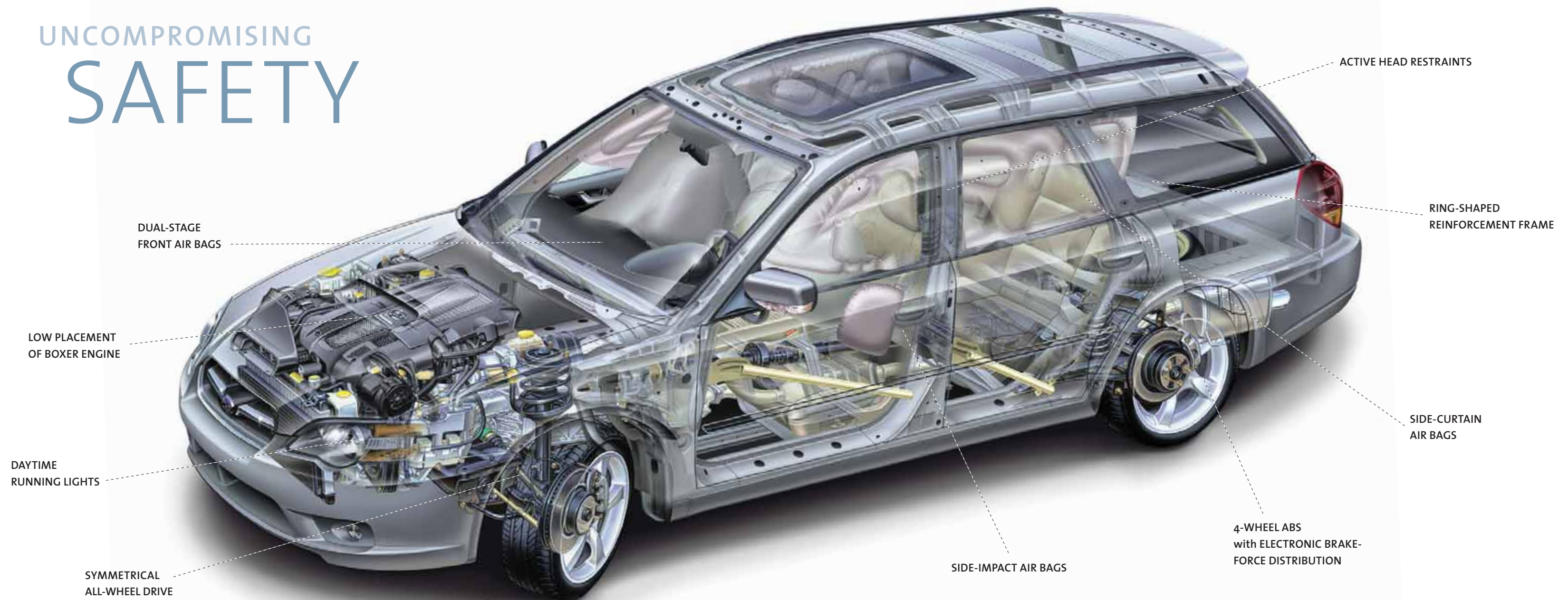


5-SPEED MANUAL TRANSMISSION For those who prefer to row their own gears. The 5-speed manual transmission of the 2.5i and 2.5 GT Limited is fully synchronized for precise shifts.

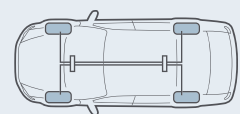


Legacy 2.5 GT Limited Wagon shown in Satin White Pearl.

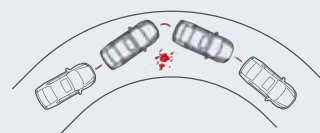
UNCOMPROMISING SAFETY



ACTIVE SAFETY Our approach to keeping you safe only begins with the traction of Subaru Symmetrical AWD and responsive handling combining to keep you in control. These inherent advantages are supported by a comprehensive array of features to help you in an emergency. To help avoid an impending accident, 4-wheel antilock disc brakes (ABS) are enhanced with Electronic Brake-force Distribution (EBD) to maximize stopping power sooner. At Subaru, every innovation is designed with your protection in mind.

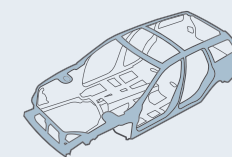


TIRE PRESSURE MONITORING SYSTEM Maintaining proper pressure is key in preserving optimal handling and control. The Tire Pressure Monitoring System (TPMS) alerts you when one or more of your tires loses pressure so that you may correct the situation as soon as possible.¹

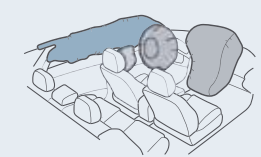


CONTROL Standard full-time AWD automatically adjusts power front and rear, helping to maintain greater traction, no matter what the road surface or the weather has in store, helping you to maintain better control of your Legacy.

PASSIVE SAFETY Subaru innovations not only help you avoid a collision. They help you and your passengers survive one, thanks to features like seat belts with front pretensioners and load limiters, side-impact beams and a Ring-Shaped Reinforcement Frame around the cabin to help dissipate the impact of a crash. Active front-seat head restraints help reduce the chances of whiplash. And an extensive array of air bags helps offer protection from the front and sides.² Together, they help the Legacy achieve a Gold Top Safety Pick rating, the highest results in IIHS crash safety testing.³



REINFORCED CONSTRUCTION Engineered for exceptional strength to help maintain the integrity of the cabin structure, the innovative Subaru ring-shaped reinforcements around the passenger compartment also help dissipate crash-impact energy away from occupants.



FRONT, SIDE AND CURTAIN AIR BAGS An intelligent front air bag system senses driver's seat position and front-passenger seat occupancy to determine the safest deployment level for each. Side-curtain air bags to help protect front and outboard rear seat passengers.

¹ Available only on 2.5 GT Limited and 2.5 GT spec. B models. ² Always wear seat belts. Children should be properly restrained in the rear seat. ³ For more information, contact the Insurance Institute for Highway Safety or visit their website at www.iihs.org.



Accessories

Outfit your Subaru to be as unique as your adventures. Backed by a 3-year/36,000-mile limited warranty,¹ Genuine Subaru Accessories give you the ability to take everything—and anything—you need.

Legacy 2.5 GT Limited Wagon shown in Brilliant Silver Metallic.



EXTENDED ROOF CARGO CARRIER Mounted to the accessory crossbars, this cargo carrier (shown above) provides 16 cubic feet and up to 100 pounds of lockable storage capacity to carry everything you need, and may be opened on either the right or left side. Accommodates skis of up to 180 cm in length.

AUTO-DIMMING MIRROR WITH COMPASS/HOMELINK® Mirror darkens when headlights are detected from the rear of the vehicle. Includes electronic compass and three integrated Homelink buttons.

CENTER ARMREST EXTENSION Raises up and forward for additional comfort when driving.

AVAILABLE ACCESSORIES

- XM® Satellite Radio
 - Remote engine starter
 - Rocker panel trim
 - Rear dome reading light
 - Kayak carrier
 - STI Short-throw Shifter (manual transmission)
 - MOMO® Shift Knobs
 - STI Metal Pedal Pad Set
 - STI Side Sill Plate
 - Hood Protector
 - Roof Cargo Carriers
- Ski Attachment (6 pair)
 - Fork-mounted Bike Carrier
 - Rear spoiler (sedan)
 - Moonroof Air Deflector
 - Cargo Nets
 - Compartment Separator/Dog Guard
 - Fog Lamps
 - Subwoofer/Amplifier
 - Security System Upgrade Shock Sensor
 - Splash Guards
- All-weather Floor Mats
 - Rear Cargo Trays
 - Front End Covers
 - Severe Weather Companion
 - Strut Tower Brace
 - Performance Gauge Pack
 - For a complete list of available accessories, log on to www.subaru.com

¹ Accessories backed by 3-year/36,000-mile New Car Limited Warranty when installed at time of vehicle purchase. For complete details on warranty coverage and exclusions, see your Subaru dealer or log on to www.subaru.com.



Ownership Benefits

Enjoying your Subaru for years to come—that’s the promise of our comprehensive warranties and roadside assistance program. It’s a fact attested by the 96% of Subaru vehicles sold in the past 10 years that are still on the road today.¹ It’s the confidence you feel when you get behind the wheel.

NEW CAR LIMITED WARRANTY 3 years or 36,000 miles, whichever comes first.	POWERTRAIN LIMITED WARRANTY 5 years or 60,000 miles, whichever comes first.
WEAR ITEM LIMITED WARRANTY 3 years or 36,000 miles, whichever comes first.	RUST PERFORATION LIMITED WARRANTY 5 years, unlimited mileage.

THE SUBARU ROADSIDE ASSISTANCE PROGRAM covers all 2007 Subaru vehicles during the first 3 years or 36,000 miles, whichever comes first. By calling the toll-free number in the Owner’s Information Kit, Subaru owners can take advantage of any of the following benefits:

- 24-hour Roadside Assistance, seven days a week, 365 days a year, throughout the United States.
- Emergency Towing Service to the nearest authorized Subaru dealer.
- Emergency Roadside Assistance for jump starts, gasoline (up to two gallons), flat tire change, emergency lockout service (lost key or key is locked in the vehicle) and emergency fluid replacement.

SUBARU ADDED SECURITY® could be the most important option you choose. Protect your investment with a Subaru Added Security extended service contract—the **only** one backed by Subaru of America, Inc. Ask your salesperson for coverage details and assistance in selecting the plan that’s best for you, up to 7 years or 100,000 miles.

SUBARU.COM begins your Subaru experience. Here, you can find extensive information including specs, photos and reviews. Build your own Subaru, locate dealers and schedule a test drive. After your purchase, activate your free My.Subaru site, where Subaru owners can track their vehicle’s service history, schedule service appointments, receive special offers exclusive to My.Subaru members and much more.

For complete warranty and program information, including coverage and exclusions, see your Subaru dealer.
¹ Based on R. L. Polk & Co. vehicle registration statistics for period ending 7/31/05.

Colors

Paint



Brilliant Silver Metallic



Diamond Gray Metallic



Obsidian Black Pearl



Newport Blue Pearl

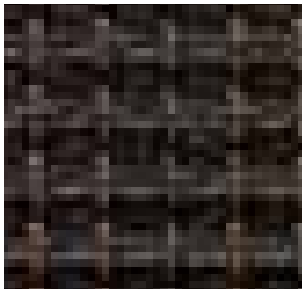


Regal Blue Pearl



Satin White Pearl

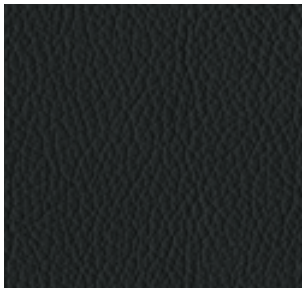
Upholstery



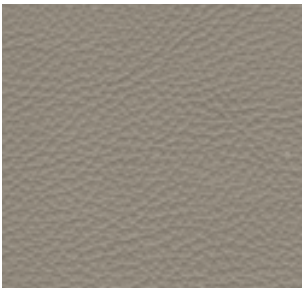
Dark Charcoal Tweed



Warm Ivory Tweed



Charcoal Gray Leather



Taupe Leather



Charcoal Gray Leather/Dusk Blue Alcantara®

Legacy Specifications

ENGINE AND DRIVETRAIN		2.5i AND 2.5i SPECIAL EDITION SEDAN AND WAGON		2.5i LIMITED SEDAN AND WAGON		2.5 GT LIMITED SEDAN AND WAGON		2.5 GT SPEC. B SEDAN	
Engine		2.5-liter SOHC aluminum-alloy 16-valve horizontally opposed 4-cylinder SUBARU BOXER engine with i-Active Valve Lift System. Platinum-tipped spark plugs.				2.5-liter DOHC intercooled, turbocharged aluminum-alloy 16-valve 4-cylinder horizontally opposed SUBARU BOXER engine with Active Valve Control System. Iridium spark plugs.			
Power¹		175 hp @ 6,000 rpm				243 hp @ 6,000 rpm			
Torque¹		169 lb-ft @ 4,400 rpm				241 lb-ft @ 3,600 rpm			
Compression ratio		10.0:1				8.2:1			
Bore and stroke		99.5 x 79.0 mm				99.5 x 79.0 mm			
Intake system		Aluminum-alloy intake manifold				Composite-resin intake manifold. Turbocharger with air-to-air intercooler. Maximum boost pressure: 13.5 psi.			
Fuel and ignition system		Sequential multiport fuel injection. Electronic Throttle Control (ETC). Engine management with integrated self-diagnostics and adaptive driving habits capability. Distributorless electronic ignition – 2.5i models. Direct ignition – 2.5 GT models.							
SI-DRIVE performance management system		Available only on 2.5 GT Limited and 2.5 GT spec.B models, Subaru Intelligent Drive (SI-DRIVE) enables three distinctively different modes of vehicle performance characteristics by regulating the engine control unit (ECU), the automatic transmission control unit (if equipped), and by fine-tuning the electronically controlled throttle.							
Manual transmission		Fully synchronized 5-speed manual 2.5i Sedan and Wagon, 2.5i S.E. Sedan: Standard. 2.5i S.E. Wagon, 2.5i Limited Sedan and Wagon: Not available.				Fully synchronized reinforced 5-speed manual. Sedan: Standard. Wagon: Not available.		Standard fully synchronized 6-speed manual	
Automatic transmission		4-speed adaptive electronic direct-control automatic with SPORTSHIFT® manual control 2.5i and 2.5i S.E. Sedans: Optional. 2.5i S.E. Wagon, 2.5i Limited Sedan and Wagon: Standard. 2.5i Wagon: Not available.				5-speed adaptive electronic direct-control automatic with SPORTSHIFT manual control. Sedan: Optional. Wagon: Standard.		Not available	
Emissions		Certified Low Emission Vehicle (LEV2)²				Certified Low Emission Vehicle (LEV2)			
FUEL		SEDAN		WAGON		SEDAN		WAGON	
Fuel economy (city/highway)		Manual Automatic		22/29 mpg 23/30 mpg	22/29 mpg 23/30 mpg	N/A 23/30 mpg	N/A 23/30 mpg	20/27 mpg 19/25 mpg	N/A 19/25 mpg
Fuel requirement		Unleaded gasoline (87 octane)				Premium unleaded gasoline required (91 octane)			

SUBARU SYMMETRICAL ALL-WHEEL DRIVE

Continuous All-Wheel Drive	Models equipped with 5- or 6-speed manual transmissions utilize a viscous-type locking center differential with torque distribution normally configured at a 50/50-split front-to-rear. If wheel speed differs between front and rear axles, the system helps distribute power to the wheels with the most traction. 2.5 GT Limited models equipped with a viscous-type limited-slip rear differential. 2.5 GT spec. B Sedan equipped with a Torsen® limited-slip rear differential.
Active All-Wheel Drive	Models equipped with 4-speed automatic transmission utilize an electronically controlled variable transfer clutch to distribute power to where traction is needed. Sensors monitor parameters such as wheel slippage, throttle position and braking, to help determine torque distribution and direct it to the wheels with optimum traction.
Variable Torque Distribution (VTD) All-Wheel Drive	Models equipped with 5-speed automatic transmission utilize an electronically controlled variable transfer clutch in conjunction with a planetary-type center differential, and a viscous-type limited-slip rear differential. Torque distribution is normally configured at a performance-oriented rear-wheel-biased 45/55-split front-to-rear. Sensors monitor parameters such as wheel slippage, throttle position and braking to help determine torque distribution and direct it to the wheels with optimum traction.

STABILITY AND TRACTION

Vehicle Dynamics Control (VDC)	Standard on 2.5 GT Limited Sedan with navigation system and 2.5 GT spec. B Sedan, VDC stability control utilizes sensors which constantly monitor wheel speed, steering angle, brake pressure, vehicle yaw rate and lateral g-forces. If VDC detects a difference between the driver’s intended path and the one the vehicle is actually taking, VDC applies braking power and/or reduces engine torque to help correct vehicle path.
Traction Control System (TCS)	VDC also incorporates an all-wheel, all-speed traction control system which senses a loss of traction and applies braking force to the slipping wheel or wheels as necessary to maintain vehicle motion.

CHASSIS

Steering	Engine-speed-sensing variable power-assisted rack-and-pinion. Turns lock-to-lock: 3.2. Ratio: 16.5:1. Turning circle: 35.4 ft.	Engine-speed-sensing variable power-assisted rack-and-pinion. Turns lock-to-lock: 2.8. Ratio: 15:1. Turning circle: 35.4 ft. (2.5 GT spec. B: 38.0 ft.)
Suspension	4-wheel independent suspension. Front: Strut type with lower L-arm. Antidive geometry. Rear: Multilink with antilift and antisquat geometry. Front and rear stabilizer bars.	4-wheel independent suspension with sport-tuned Bilstein® shocks. Front: Inverted-strut-type with aluminum-alloy control arms. Rear: Multilink with aluminum-alloy rear arms and upper links.
Brakes	4-wheel disc, ventilated front. 4-channel, 4-sensor ABS with Electronic Brake-force Distribution (EBD).	4-wheel disc, ventilated front and rear. 4-channel, 4-sensor ABS with Electronic Brake-force Distribution (EBD).
Brake discs	Front: 11.5 in./Rear: 10.6 in.	Front: 12.3 in./Rear: 11.3 in.

WHEELS AND TIRES

Wheels	17 x 7.0-inch 5-spoke aluminum-alloy. Silver finish.	17 x 7.0-inch 6-spoke aluminum-alloy. Silver finish.	18 x 7.0-inch 10-spoke aluminum-alloy. Silver finish.
Tires	205/50 R17 88V M+S all-season	215/45 ZR17 M+S all-season	215/45 R18 89Y summer performance tires

EXTERIOR DIMENSIONS	SEDANS					WAGONS			
Length / Height / Width	186.2 in. / 56.1 in. (2.5 GT spec. B: 56.5 in.)/ 68.1 in.					188.7 in. / 58.1 in. (includes roof rails) / 68.1 in.			
Wheelbase	105.1 in.					105.1 in.			
Track (front/rear)	58.9 in./58.5 in.					58.9 in./58.5 in.			
Base curb weight (manual/automatic)	2.5i 3,270 lbs./ 3,325 lbs.	2.5i SPECIAL EDITION 3,305 lbs./ 3,360 lbs.	2.5i LIMITED N/A/ 3,365 lbs.	2.5 GT LIMITED 3,415 lbs./ 3,485 lbs.	2.5 GT SPEC. B 3,515 lbs./ N/A	2.5i 3,305 lbs./ N/A	2.5i SPECIAL EDITION N/A/ 3,420 lbs.	2.5i LIMITED N/A/ 3,420 lbs.	2.5 GT LIMITED N/A/ 3,530 lbs.
Coefficient of drag (cd)	0.31					0.32			

INTERIOR DIMENSIONS

Headroom (front/rear)	39.5 in./36.5 in. (with moonroof: 37.6 in./36.5 in.)	40.5 in./39.1 in. (with moonroof: 38.7 in./37.1 in.)
Legroom (f/r) Shoulder room (f/r)	44.1 in./33.9 in. 54.2 in./53.7 in.	44.1 in./33.9 in. 54.4 in./53.7 in.
Passenger volume	93.5 cu. ft. (with moonroof: 90.9 cu. ft.)	97.7 cu. ft. (with moonroof: 92.6 cu. ft.)
Cargo volume	11.4 cu. ft.	33.5 cu. ft.
Maximum cargo volume	11.4 cu. ft.	65.4 cu. ft. with rear seat lowered

LEGACY								
Color Combinations		2.5i AND 2.5i SPECIAL EDITION SEDAN AND WAGON		2.5i LIMITED SEDAN AND WAGON		2.5 GT LIMITED SEDAN AND WAGON		2.5 GT SPEC. B SEDAN
		UPHOLSTERY	Dark Charcoal Tweed	Warm Ivory Tweed	Charcoal Gray Leather	Taupe Leather	Charcoal Gray Leather	Taupe Leather
PAINT								
Brilliant Silver Metallic			●	–	●	–	●	–
Diamond Gray Metallic			–	–	●	–	●	–
Newport Blue Pearl			–	●	–	●	–	–
Obsidian Black Pearl			●	–	●	–	●	–
Regal Blue Pearl			–	●	–	–	–	–
Satin White Pearl			–	●	–	●	–	–

● Available – Not available

Legacy Specifications

EXTERIOR	2.5i SEDAN AND WAGON	2.5i SPECIAL EDITION SEDAN AND WAGON	2.5i LIMITED SEDAN AND WAGON	2.5 GT LIMITED SEDAN AND WAGON	2.5 GT SPEC. B SEDAN
Projector-beam low-beam and multireflector high-beam headlights	●	●	●	●	●
Projector-beam fog lights	○ ³	○ ³	●	●	●
Aluminum-alloy hood	●	●	●	–	–
Aluminum-alloy hood with functional scoop (feeds turbocharger intercooler)	–	–	–	●	●
Front bumper with lower air intake and integrated front spoiler	●	●	●	●	●
Body-color door handles and side mirrors	●	●	●	●	●
Body-color side mirrors with integrated turn signals	–	–	–	●	●
Heated side mirrors and windshield wipers de-icer	–	–	●	●	●
Two-speed windshield wipers with variable intermittent mode	●	●	●	●	●
Single-speed rear window wiper with fixed intermittent mode and de-icer (wagon)	●	●	●	●	–
Aerodynamic side ground effects	●	●	●	●	–
Aerodynamic side ground effects with chrome trim	–	–	–	–	●
Aluminum-alloy rear gate with integrated spoiler (wagon)	●	●	●	●	–
Dual chrome exhaust outlets	●	●	●	●	●
Black-finish low-profile roof rails (wagon)	●	●	●	●	–
Power tilt/sliding-glass moonroof (sedan)	–	●	●	●	●
Panoramic tilt/sliding dual-panel moonroof (wagon)	–	●	●	●	–

SEATING AND TRIM

6-way manually adjustable driver’s seat with manually adjustable lumbar support. 4-way manually adjustable front-passenger seat.	●	–	–	–	–
8-way power driver’s seat with manually adjustable lumbar support. 4-way manually adjustable front-passenger seat.	–	●	●	–	–
8-way power driver’s seat and 4-way power front-passenger seat, both with manually adjustable lumbar support	–	–	–	●	●
2-position driver’s seat memory	–	–	–	–	●
4-stage heated front seats	–	–	●	●	●
Performance-design front seats	–	–	–	●	●
60/40-split flat-folding rear seatback	●	●	●	●	●
3-spoke steering wheel with manually adjustable tilt column	●	●	–	–	–
Leather-wrapped 3-spoke steering wheel with manually adjustable tilt column	–	–	●	●	–
Leather-wrapped 3-spoke MOMO® brand steering wheel with manually adjustable tilt column and automatic transmission SPORTSHIFT® manual control buttons	–	–	–	○ ⁴	–
Leather-wrapped 3-spoke MOMO® brand steering wheel with manually adjustable tilt column	–	–	–	–	●
Leather-wrapped manual transmission shifter handle	–	–	–	●	●
Leather-wrapped automatic transmission shifter handle with woodgrain-patterned inlay	–	–	●	○ ⁴	–
Cloth upholstery	●	●	–	–	–
Leather-trimmed upholstery	–	–	●	●	–
Leather-trimmed upholstery with Alcantara® seat inserts	–	–	–	–	●
Titanium metallic trim on doors and console	●	●	–	–	●
Titanium metallic trim with Chestnut woodgrain-patterned accents ⁵	–	–	●	●	–
Titanium metallic trim with Elm woodgrain-patterned accents ⁶	–	–	●	●	–
Carpeted floor mats	●	●	●	●	●

CONVENIENCE FEATURES

Power front and rear windows with driver’s auto-down	●	●	●	●	●
Electronically controlled cruise control	●	●	●	●	●
Dual cup holders in center console with retractable lid. Retractable dual rear cup holders.	●	●	●	●	●
Sun visors with extenders and illuminated vanity mirrors	●	●	●	●	●
Illuminated glovebox and in-dash storage compartment	●	●	●	● ⁷	–
Center console with armrest and enclosed storage compartment	●	●	●	●	●
12-volt power outlet in dash and center console storage compartment	●	●	●	●	●
Trunk/cargo-area-concealed under-floor storage tray. Concealed storage compartments in wagons’ cargo-area side panels. Dual grocery bag hooks.	●	●	●	●	●
Retractable/removable cargo-area cover. 4 tiedown hooks. (wagon)	●	●	●	●	–
Remote starter prewiring ¹ (automatic transmission only)	●	●	●	●	–

AUDIO AND COMMUNICATION SYSTEMS

100-watt 6-speaker audio system with single-disc in-dash CD player and MP3/WMA capability	●	●	–	–	–
100-watt 6-speaker audio system with 6-disc in-dash CD changer, MP3/WMA capability and SRS WOW™ 3D audio enhancement	–	–	●	●	●
Auxiliary audio jack for portable media players	●	●	●	●	●
XM® Satellite Radio capability ¹	●	●	●	●	●
Steering-wheel-mounted audio controls	–	–	–	–	●
Touch-screen GPS navigation system	–	–	–	○ ⁸	●

INSTRUMENTATION

Analog speedometer, tachometer, coolant temperature and fuel gauges	●	●	●	●	●
Sport-design electroluminescent lighting	–	–	–	●	●
Gauge needles full-sweep on start-up	●	●	●	●	●
Digital odometer and automatic transmission (when equipped) shift-position indicator	●	●	●	●	●
Digital trip computer displaying fuel economy, driving range, digital clock, journey time, ambient temperature and road surface freeze warning	●	●	●	–	–
Multifunction screen displaying trip computer (fuel economy, driving range, digital clock, journey time, ambient temperature, road surface freeze warning) and selected SI-DRIVE system mode (Intelligent, Sport or Sport Sharp)	–	–	–	●	●
Multifunction screen displaying navigation system information, trip computer functions, maintenance intervals, controls for various vehicle settings, calendar, calculator and memo-taking function	–	–	–	○ ⁹	●

CLIMATE CONTROL

Manually adjustable CFC-free air conditioning system with rotary controls for temperature, 4-speed fan and airflow direction	●	●	–	–	–
Dual-zone automatic digital climate control system with controls for temperature, 6-speed fan, airflow direction, automatic mode and CFC-free air conditioning	–	–	●	●	●

SECURITY

Keyless entry system with trunk release (sedan) or cargo-area unlock (wagon) and answer-back electronic chirp	●	●	●	●	●
Antitheft security system with engine immobilizer and answer-back electronic chirp	●	●	●	●	●

SAFETY

ACTIVE

Subaru Symmetrical All-Wheel Drive (AWD)	●	●	●	●	●
SUBARU BOXER engine	●	●	●	●	●
4-wheel antilock brakes (ABS) with Electronic Brake-force Distribution (EBD)	●	●	●	●	●
4-wheel independent suspension	●	●	●	●	●
Vehicle Dynamics Control (VDC)	–	–	–	● ⁵	●
Traction Control System (TCS)	–	–	–	● ⁶	●
Tire Pressure Monitoring System (TPMS)	–	–	–	●	●
Daytime Running Lights (DRL)	●	●	●	●	●

PASSIVE

Dual-stage deployment driver and front-passenger front air bags (SRS) ¹⁰	●	●	●	●	●
Subaru advanced frontal air bag system with driver’s seat position sensor and front-passenger occupant detection sensor (SRS) ¹⁰	●	●	●	●	●
Side-curtain air bags protecting front and rear outboard occupants (SRS) ¹⁰	●	●	●	●	●
Seat-mounted front side-impact airbags (SRS) ¹⁰	●	●	●	●	●
Height-adjustable Active Front Seat Head restraints	●	●	●	●	●
Three individual height-adjustable rear head restraints (wagon). Three rear head restraints (sedan).	●	●	●	●	●
Height-adjustable 3-point front seatbelts with pretensioners and force limiters. 3-point rear seatbelts at all seating positions.	●	●	●	●	●
Rear child-safety door locks	●	●	●	●	●
LATCH system: Lower Anchors and Tethers for Children	●	●	●	●	●
Safety brake pedal system	●	●	●	●	●
Energy-absorbing collapsible steering column	●	●	●	●	●
Ring-Shaped Reinforcement Frame body structure	●	●	●	●	●

OPTIONAL EQUIPMENT

Touch-screen GPS navigation system	–	–	–	○ ⁸	●
4-speed adaptive electronic direct-control automatic transmission with SPORTSHIFT manual control	○ ¹¹	○ ¹²	●	–	–
5-speed adaptive electronic direct-control automatic transmission with SPORTSHIFT manual control	–	–	–	○ ⁴	–

● Standard ○ Optional – Not available

¹ Subaru has applied the new SAE method for measuring horsepower and torque. ² Some 2007 Legacy models with the naturally aspirated 2.5-liter engine distributed for sale in California (and in Maine, Massachusetts, New York and Vermont which have adopted California Specification Emission Control Systems and Warranties and are registered for use in those states) will be specially equipped to meet the California-certified Partial Zero Emission Vehicle (PZEV) credited Super Ultra Low Emission Vehicle (SULEV2) requirements. The manufacturer’s PZEV emission control system warranty coverage is for 15 years or 150,000 miles, whichever comes first. For complete warranty information, including coverage and exclusions, see your Subaru dealer. ³ Available as an accessory. See your dealer. Satellite radio hardware and required monthly subscription sold separately. ⁴ Standard on 2.5 GT Limited Wagon. ⁵ With Charcoal Gray leather upholstery. See color combinations chart. ⁶ With Taupe leather upholstery. See color combinations chart. ⁷ Optional navigation system replaces in-dash storage compartment. ⁸ Available only on 2.5 GT Limited Sedan with optional automatic transmission. ⁹ Available only on 2.5 GT Limited Sedan with optional navigation system. ¹⁰ The Supplemental Restraint System (SRS) (air bags) affords the driver and the front and rear outboard passengers additional protection in moderate to severe frontal and side-impact collisions. This system provides supplemental protection only, and seatbelts must be worn in order to avoid injuries to out-of-position occupants upon bag deployment and to provide the best combined protection in a serious accident. Children should always be properly restrained in the rear seat. ¹¹ Not available on 2.5i Wagon. ¹² Standard on 2.5i Special Edition Wagon.

Some images shown are for illustration purposes only. Specifications in this brochure are based on the latest product information available at the time of publication. For the most up-to-date product information, log on to www.subaru.com. Some equipment shown in photography in this brochure is optional at extra cost. Specific options may be available only in combination with other options. Specific combinations of equipment or features may vary from time to time and by geographic area. Certain accessories and equipment may not be available at the time of publication. Subaru of America, Inc., reserves the right to change or discontinue at any time, without notice, prices, colors, materials, equipment, accessories, specifications, models and packages without incurring any obligation to make the same or similar changes on vehicles previously sold. Colors shown may vary due to reproduction and printing processes. This brochure was prepared by Subaru of America, Inc. A warranty from Subaru of America, Inc., is available only on cars sold to the first retail purchaser through an authorized Subaru dealer in the continental U.S. or Alaska. Subaru, SUBARU BOXER, Legacy and MOMO are registered trademarks. SPORTSHIFT is a registered trademark of Prodrive Ltd. HomeLink is a registered trademark of Prince Corporation, a wholly owned subsidiary of Johnson Controls. Alcantara is a registered trademark of Alcantara S.p.A. and Alcantara is produced by Toray Group. SRS WOW is a trademark of SRS Labs, Inc. TORSEN is a registered trademark of JTEKT Corporation. XM is a registered trademark of XM Satellite Radio Inc. iPod is a registered trademark of Apple Computer, Inc. Think. Feel. Drive. is a trademark. For more information, contact your Subaru dealer or log on to www.subaru.com.



Redefining invigoration in three dimensions. | **Think. Feel. Drive.**