

2006 SUBARU  
**LEGACY**



**THINK.** About innovating. About performance that inspires pleasure as well as confidence. About style abundant with substance. In engineering vehicles that go beyond the expected, we never stop thinking. To create new driving experiences. To design a vehicle that's as graceful as it is thrilling. And to be true to what makes a Subaru, a Subaru.









Legacy 2.5 GT Limited Sedan shown with Charcoal leather, optional automatic transmission and navigation system, and accessory center armrest extension.

**The Subaru Legacy** As its name suggests, the Legacy is endowed with years of heritage and development. Yet it also embodies our latest innovation and technology. A sport sedan and wagon that appeals to the senses, the emotions and the intellect. It engages the driving enthusiast with a balanced boxer engine, Symmetrical All-Wheel Drive stability and nimble sport-tuned suspension. Invites the touch with an interior rich in refinement. And captures the eye with its elegant exterior. It all leads up to a vehicle that stimulates the mind. And tempts the heart.

## 2.5i

### **2.5i | Sedan and Wagon**

Powered by a 175-hp engine, the 2.5i offers performance, value and a full complement of safety features.

### **2.5i Special Edition | Sedan and Wagon**

All of the amenities of the 2.5i, plus a power moonroof and the convenience of an 8-way power driver's seat.

### **2.5i Limited | Sedan and Wagon**

Enjoy the added luxury of leather-trimmed seats, heated front seats, a 6-disc in-dash CD changer and dual-zone automatic climate control.



### **2.5 GT Limited | Sedan and Wagon**

Fully loaded with perforated leather-trimmed performance-design front seats, and motivated by 250 turbocharged horsepower.

## 2.5 GT







# FEEL.

Behind the wheel, there is exhilaration.

The freedom of control  
over motion, acceleration, destination.



## Interior

Step inside the Subaru Legacy to find a world built exclusively to indulge the driver. You'll find a cockpit designed to put every control within intuitive reach, premium materials on every surface and an available moonroof to let in the sunshine and fresh air. Six optimally placed speakers impart multilayered audio output from your favorite CD. And an available touch-screen GPS navigation system leads you to your next destination, providing visual and voice guidance every step of the way. Seated inside such an inviting interior, you may just find yourself seeking new destinations and all the twisty ways there.

---



**Performance-design front seats** Curvy roads sing their siren song. You respond. The aggressively bolstered front seats of the Legacy 2.5 GT Limited provide firm, comfortable seating, while giving maximized support during cornering.

**Heated seats** Let the available 4-stage heated front seats take the bite out of a chilly morning drive.

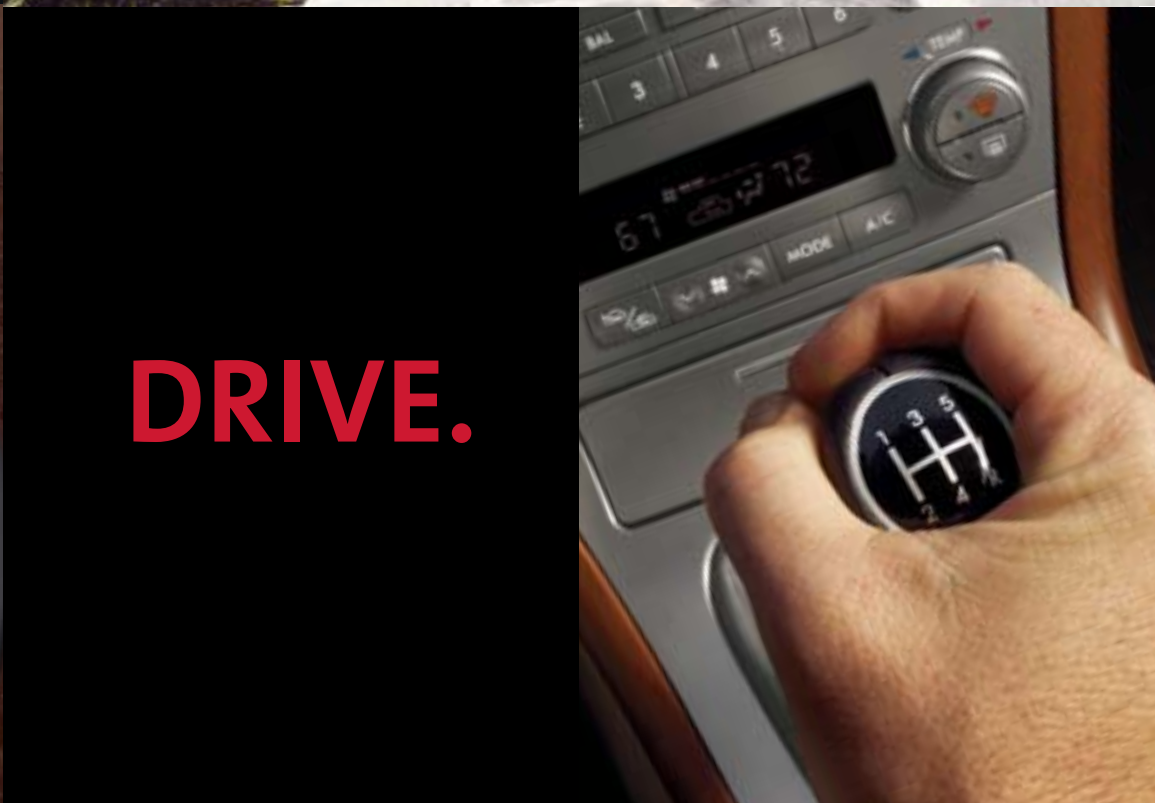
**Dual-zone automatic climate control** For maximum comfort for both the driver and front passenger, the available dual-zone climate control provides independent temperature adjustments.

**Electroluminescent gauges** Start the engine and the instrument cluster leaps to life with a full sweep of the dials. The available electroluminescent gauges brighten all the pertinent information so they always remain easy to read, no matter what the lighting condition is outside.



Legacy 2.5 GT Limited Sedan shown with optional navigation system.







# Subaru Boxer Engine

Press the accelerator to get outstanding power, along with a healthy dose of innovation. At the heart of the Legacy is our legendary SUBARU BOXER engine, with pistons laid flat in horizontal opposition. Used in every Subaru, this design lowers the center of gravity, providing more precise handling while increasing durability and reducing vibration. Balance. Stability. Power. It's what makes a Subaru, a Subaru.

**2.5i** The aluminum-alloy 2.5-liter 4-cylinder engine utilizes a new computer-controlled i-Active Valve Lift System that helps increase horsepower to 175 while delivering a broader torque curve. Yet it meets one of the strictest emissions standards for gasoline engines.<sup>1</sup>

**2.5 GT Limited** The intercooled turbocharger raises both horsepower and torque to a potent 250. It's capable of launching the Legacy 2.5GT Limited from 0 to 60 in 5.8 seconds.<sup>2</sup> And the Active Valve Control System improves breathability for more power throughout.



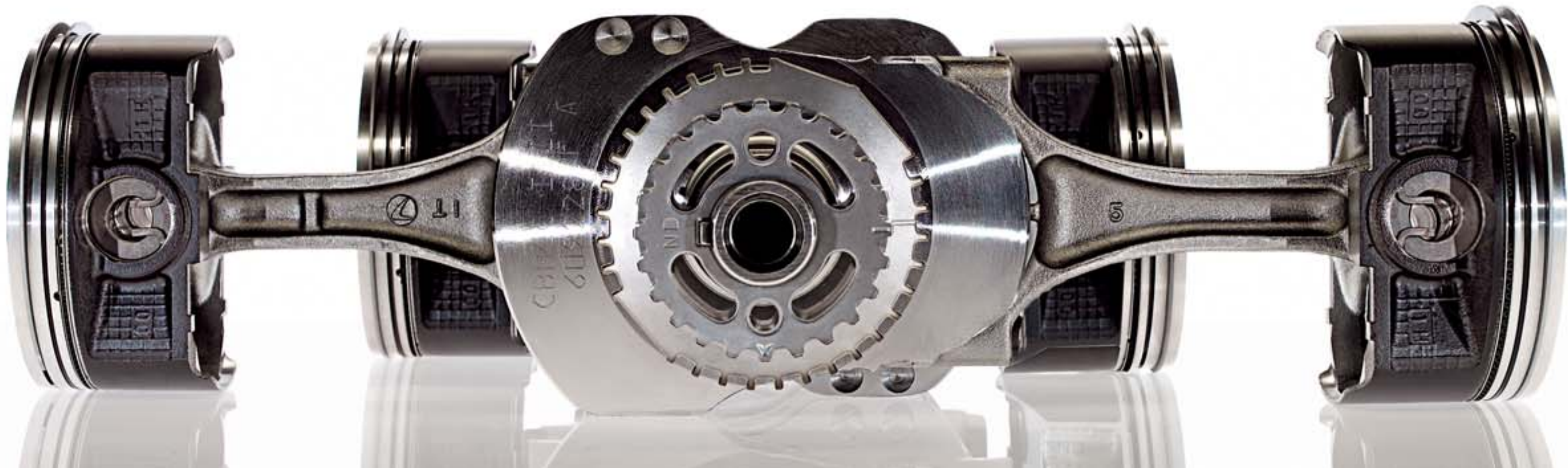
The roots of Subaru heritage lie in the aviation industry. It is this experience that allows us to recognize and optimize the inherent advantages of the horizontally opposed boxer engine configuration. With its compactness, superior performance, inherent smoothness and reliability, it is a design that Subaru has continually refined for almost 40 years. And it remains the only configuration worthy of meeting our standards.



**5-speed manual transmission** It's fully synchronized for precise shifts. The Legacy 2.5 GT Limited has a reinforced dual-mass flywheel clutch for even smoother, direct action.

**Automatic transmission with SPORTSHIFT®** The available 4-speed automatic unit features SPORTSHIFT manual control for greater involvement. Available on 2.5 GT Limited models is a 5-speed automatic with steering wheel-mounted SPORTSHIFT buttons so you can keep your hands on the wheel while running through the gears.

<sup>1</sup> When equipped to meet the California-certified Partial Zero Emission Vehicle (PZEV) standard.







Legacy 2.5 GT Limited Sedan shown in Atlantic Blue Pearl.

**Control** The Subaru standard full-time Symmetrical All-Wheel Drive (AWD) automatically adjusts power to all four wheels, helping to maintain greater traction, no matter what the road or weather has in store. But the unique configuration of Symmetrical AWD delivers an added benefit. Its ideal equilibrium ensures stability and poise. And since power flows directly from the engine to the wheels, its efficiency ensures quicker response to slippage for greater grip. Providing more than just safety on slick roads, it intensifies performance on any road. Subaru offers three advanced AWD systems in the Legacy.



**Continuous AWD** Models equipped with the 5-speed manual use a viscous-center locking differential. Should wheel slippage occur, it helps transfer power to the wheels with the most traction.

**Active AWD** Paired with the 4-speed automatic, the Active AWD system monitors parameters such as wheel slippage and vehicle speed, actively adjusting power to the front or rear wheels for optimal adhesion.

**VTD AWD** The 2.5 GT Limited with 5-speed automatic uses Variable Torque Distribution (VTD) that normally splits power 45% front and 55% rear for a sporty feel, and dynamically reapportions torque for maximum grip.

**Handling** The joy of driving goes beyond horsepower. It's in piloting a car that feels like an extension of yourself. One that exhibits quick reflexes and unfazed predictability through S-curves, hairpins, switchbacks. That's why every chassis component of the Legacy, with its precise rack-and-pinion steering, rigid and lightweight body structure, 4-wheel disc brakes and independent suspension, is geared toward one goal—driving pleasure.



**Suspension** Years of insight gained from intense world-rally championships coupled with the rigors of real-world driving went into the development of our 4-wheel independent suspension. The result is the responsiveness and communicative nature of a precision-tuned vehicle. Yet it provides a supple, fluid ride, minimizing jostling over blemished pavement. Impeccable road manners, with more than enough verve to take on the curves.



## Versatility

The Legacy is available in two distinct, yet equally appealing configurations. Both equip you with the versatility that you need to complement your own unique lifestyle. The sedan provides a generously proportioned trunk with an under-floor storage tray, as well as a pass-through for long, narrow items when you lower the rear-seat center armrest. For those who want to take it all with you, the Legacy wagon provides up to 66.2 cu. ft. of cargo capacity with the rear seats lowered. And low-profile roof rails with accessory crossbars accommodate your extra gear, such as skis and snowboards.

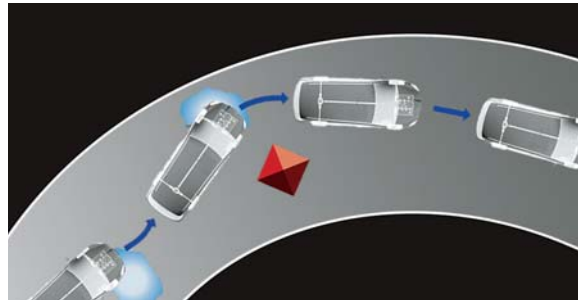


**Flexible space** The cargo area of the Legacy wagon offers up to 33.5 cu. ft. of space when both rear seats are in use. Lower one of the 60/40-split seatbacks for seating and cargo capability, or lower both to make full use of the up to 66.2 cu. ft. of storage space. You'll also find concealed compartments in the side panels and an under-floor storage tray to keep small items secure and organized. And you can keep it all away from prying eyes with the standard retractable/removable cargo-area cover.





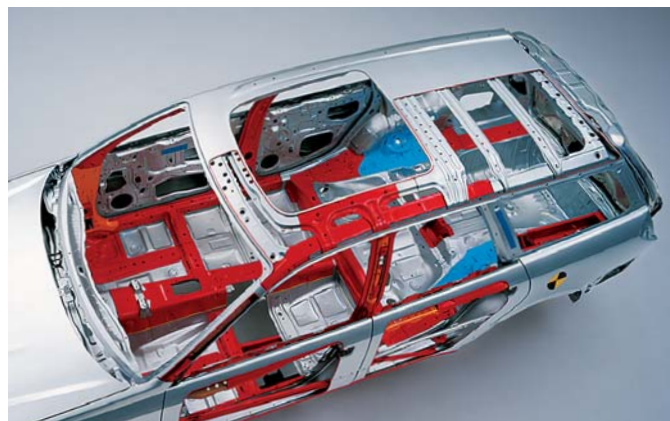
## Safety



**Active safety** Lower center of gravity due to SUBARU BOXER engine • Symmetrical All-Wheel Drive stability • 4-wheel independent suspension • Responsive rack-and-pinion steering • Daytime Running Lights (DRL) • 4-wheel disc brakes • 4-channel, 4-sensor antilock brakes (ABS) • Electronic Brake-force Distribution (EBD)

**The Subaru Commitment** We never rest in our enduring effort to devise better ways to protect passengers. Features like front seatbelts with pretensioners and force limiters, crumple zones, side-impact beams and a Ring-Shaped Reinforcement Frame aid in minimizing the effects of a collision. And a full array of air bags offers protection for the front and sides.<sup>1</sup> To avoid trouble in the first place, we've engineered the driving characteristics to give you maximum control. Our trademark Symmetrical AWD and lower center of gravity work in concert with the four-wheel independent suspension and rigid chassis for nimbleness and agility. At Subaru, every innovation is designed with your safety in mind.

**Passive safety** Dual-stage front air bags • Front and rear side-curtain air bags • Front side-impact air bags • Active front-seat head restraints • Front seatbelts with pretensioners and force limiters • Safety brake pedal system • Energy-absorbing collapsible steering column • Ring-Shaped Reinforcement Frame body structure



<sup>1</sup> Always wear seatbelts. Children should be properly restrained in the rear seat.



Legacy 2.5i Sedan shown in Regal Blue Pearl.



# Accessories

Outfit your Subaru to complement your individuality. Backed by a 3-year/36,000-mile limited warranty,<sup>1</sup> Genuine Subaru Accessories give you the ability to enhance performance, versatility and style.



**Center Armrest Extension** Raises up and forward for additional comfort when driving.



**Autodimming Mirror with Compass/HomeLink®** Mirror darkens when headlights are detected from the rear of the vehicle. Includes electronic compass and three integrated HomeLink buttons.

## Available Accessories

- STI Short-throw Shifter (manual transmission)
- MOMO® Shift Knobs
- STI Metal Pedal Pad Set
- STI Side Sill Plate
- Hood Protector
- Roof Cargo Carriers
- Ski Attachment (6 pair)
- Fork-mounted Bike Carrier
- Spoiler
- Moonroof Air Deflector
- Cargo Nets
- Compartment Separator/Dog Guard
- Fog Lamps
- Subwoofer/Amplifier
- Security System Upgrade Shock Sensor
- Splash Guards
- All-weather Floor Mats
- Rear Cargo Tray
- Front End Covers
- Severe Weather Companion
- Strut Tower Brace
- Performance Gauge Pack

For a complete list of available accessories, log on to [www.subaru.com](http://www.subaru.com)



## Extended Roof Cargo Carrier

Mounted to the accessory crossbars, this cargo carrier provides 16 cubic feet and up to 100 pounds of lockable storage capacity, and may be opened on either the right or left side. Holds skis of up to 180 cm in length.

<sup>1</sup> Accessories backed by 3-year/36,000-mile New Car Limited Warranty when installed at time of vehicle purchase. For complete details on warranty coverage and exclusions, see your Subaru dealer or log on to [www.subaru.com](http://www.subaru.com)

## Ownership

Enjoying your Subaru for years to come—that's the promise of our comprehensive warranties and roadside assistance program. It's a fact attested by the nearly 97% of Subaru vehicles sold in the past 10 years that are still on the road today.<sup>1</sup> It's the confidence you feel when you get behind the wheel.

**New Car Limited Warranty** 3 years or 36,000 miles, whichever comes first.

**Wear Item Limited Warranty** 3 years or 36,000 miles, whichever comes first.

**Powertrain Limited Warranty** 5 years or 60,000 miles, whichever comes first.

**Rust Perforation Limited Warranty** 5 years, unlimited mileage.

**The Subaru Roadside Assistance Program** covers all 2006 Subaru vehicles during the first 3 years or 36,000 miles, whichever comes first. By calling the toll-free number in the Owner's Information Kit, Subaru owners can take advantage of any of the following benefits:

- 24-hour Roadside Assistance, seven days a week, 365 days a year, throughout the United States.
- Emergency Towing Service to the nearest authorized Subaru dealer.
- Emergency Roadside Assistance for jump starts, gasoline (up to two gallons), flat tire change, emergency lockout service (lost key or key is locked in the vehicle) and emergency fluid replacement.

**Subaru Added Security®** could be the most important option you choose. Protect your investment with a Subaru Added Security extended service contract—the **only** one backed by Subaru of America, Inc. Ask your salesperson for coverage details and assistance in selecting the plan that's best for you, up to 7 years or 100,000 miles.



**Stop by [subaru.com](http://subaru.com)** to begin your Subaru experience. Here, you can find extensive information including specs, photos and reviews. Build your own Subaru, locate dealers and schedule a test drive. After your purchase, join [my.subaru.com](http://my.subaru.com), where Subaru owners can access their vehicle's service and warranty history, schedule appointments and much more.

**[subaru.com](http://subaru.com)**

For complete warranty and program information, including coverage and exclusions, see your Subaru dealer.

<sup>1</sup> Based on R. L. Polk & Co. vehicle registration statistics for period ending 6/30/03.



Colors

Paint



Atlantic Blue Pearl



Brilliant Silver Metallic



Garnet Red Pearl



Obsidian Black Pearl



Regal Blue Pearl

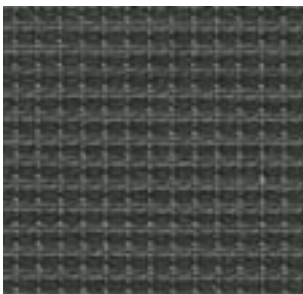


Satin White Pearl

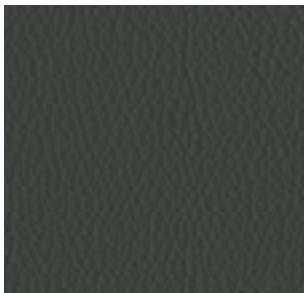
Upholstery



Taupe Flat Woven Cloth



Tweed Flat Woven Cloth



Charcoal Leather



Taupe Leather

LEGACY

Color Combinations

PAINT	UPHOLSTERY	2.5i AND 2.5i SPECIAL EDITION SEDAN AND WAGON		2.5i LIMITED SEDAN AND WAGON		2.5 GT LIMITED SEDAN AND WAGON	
		Taupe Flat Woven Cloth	Tweed Flat Woven Cloth	Charcoal Leather	Taupe Leather	Charcoal Leather	Taupe Leather
Atlantic Blue Pearl		●	–	–	●	–	●
Brilliant Silver Metallic		–	●	●	–	●	–
Garnet Red Pearl		–	–	–	–	●	–
Obsidian Black Pearl		–	●	●	–	●	–
Regal Blue Pearl		●	–	–	●	–	●
Satin White Pearl		●	–	–	●	–	●

● Available    – Not available

ENGINE AND DRIVETRAIN	2.5i AND 2.5i SPECIAL EDITION SEDAN AND WAGON	2.5i LIMITED SEDAN AND WAGON	2.5 GT LIMITED SEDAN AND WAGON
Engine	2.5-liter SOHC aluminum-alloy 16-valve horizontally opposed 4-cylinder SUBARU BOXER engine with i-Active Valve Lift System. Platinum-tipped spark plugs.	2.5-liter SOHC aluminum-alloy 16-valve horizontally opposed 4-cylinder SUBARU BOXER engine with i-Active Valve Lift System. Platinum-tipped spark plugs.	2.5-liter DOHC intercooled, turbocharged aluminum-alloy 16-valve 4-cylinder horizontally opposed SUBARU BOXER engine with Active Valve Control System. Iridium spark plugs.
Power	175 hp @ 6,000 rpm	175 hp @ 6,000 rpm	250 hp @ 6,000 rpm
Torque	169 lb-ft @ 4,400 rpm	169 lb-ft @ 4,400 rpm	250 lb-ft @ 3,600 rpm
Compression ratio	10.0:1	10.0:1	8.2:1
Bore and stroke	99.5 x 79.0 mm	99.5 x 79.0 mm	99.5 x 79.0 mm
Intake system	Aluminum-alloy intake manifold	Aluminum-alloy intake manifold	Composite-resin intake manifold. Turbocharger with air-to-air intercooler. Maximum boost pressure: 13.5 psi.
Fuel and ignition system	Sequential multiport fuel injection. Electronic Throttle Control (ETC). Engine management with integrated self-diagnostics and adaptive driving habits capability. Distributorless electronic ignition – 2.5i models. Direct ignition – 2.5 GT Limited.		
Manual transmission	Standard fully synchronized 5-speed manual	Not available	<b>Sedan:</b> Standard. <b>Wagon:</b> Not available. Fully synchronized reinforced 5-speed manual with dual-mass flywheel.
Automatic transmission	Optional 4-speed adaptive electronic direct-control automatic with SPORTSHIFT® manual control	Standard 4-speed adaptive electronic direct-control automatic with SPORTSHIFT manual control	<b>Sedan:</b> Optional. <b>Wagon:</b> Standard. 5-speed adaptive electronic direct-control automatic with SPORTSHIFT manual control.
Emissions	Certified Low Emission Vehicle (LEV2 LEV) <sup>1</sup>	Certified Low Emission Vehicle (LEV2 LEV) <sup>1</sup>	Certified Ultra Low Emission Vehicle (LEV1 ULEV)

FUEL		SEDAN	WAGON	SEDAN	WAGON	SEDAN	WAGON
Fuel economy (city/highway)	Manual Automatic	22/29 mpg 23/30 mpg	22/29 mpg 23/30 mpg	N/A 23/30 mpg	N/A 23/30 mpg	20/26 mpg 19/25 mpg	N/A 19/24 mpg
Fuel requirement		Unleaded gasoline (87 octane)		Unleaded gasoline (87 octane)		Premium unleaded gasoline (91 octane) recommended	

## SYMMETRICAL ALL-WHEEL DRIVE

Continuous All-Wheel Drive	Models equipped with 5-speed manual transmission utilize a viscous-type locking center differential with torque distribution normally configured at a 50/50-split front-to-rear. If wheel speed differs between front and rear axles, the system helps distribute power to the wheels with the most traction. 2.5 GT Limited models also equipped with a viscous-type limited-slip rear differential.
Active All-Wheel Drive	Models equipped with 4-speed automatic transmission utilize an electronically controlled variable transfer clutch to distribute power to where traction is needed. Sensors monitor parameters such as wheel slippage, throttle position and braking, to help determine torque distribution and direct it to the wheels with optimum traction.
Variable Torque Distribution (VTD) All-Wheel Drive	Models equipped with 5-speed automatic transmission utilize an electronically controlled variable transfer clutch in conjunction with a planetary-type center differential, and a viscous-type limited-slip rear differential. Torque distribution is normally configured at a performance-oriented rear-wheel-biased 45/55 split front-to-rear. Sensors monitor parameters such as wheel slippage, throttle position and braking to help determine torque distribution and direct it to the wheels with optimum traction.

## CHASSIS

Steering	Engine-speed-sensing variable power-assisted rack-and-pinion. Turns lock-to-lock: 3.2. Turning circle: 35.4 ft.	Engine-speed-sensing variable power-assisted rack-and-pinion. Turns lock-to-lock: 3.2. Turning circle: 35.4 ft.	Engine-speed-sensing variable power-assisted rack-and-pinion. Turns lock-to-lock: 2.8. Turning circle: 35.4 ft.
Suspension	4-wheel independent suspension. Front: Strut type with lower L-arm. Antidive geometry. Rear: Multilink with antilift and antisquat geometry. Front and rear stabilizer bars.		
Brakes	4-wheel disc, ventilated front. 4-channel, 4-sensor ABS with Electronic Brake-force Distribution (EBD).	4-wheel disc, ventilated front. 4-channel, 4-sensor ABS with Electronic Brake-force Distribution (EBD).	4-wheel disc, ventilated front and rear. 4-channel, 4-sensor ABS with Electronic Brake-force Distribution (EBD).
Brake discs	Front: 11.5 in./Rear: 10.6 in.	Front: 11.5 in./Rear: 10.6 in.	Front: 12.3 in./Rear: 11.3 in.

## WHEELS AND TIRES

Wheels	17 x 7.0-inch 5-spoke aluminum-alloy. Silver finish.		
Tires	205/50 R17 89H M+S all-season	205/50 R17 89H M+S all-season	215/45 ZR17 M+S all-season

## EXTERIOR DIMENSIONS

	SEDANS				WAGONS			
Length	186.2 in.				188.7 in.			
Height	56.1 in.				58.1 in. (includes roof rails)			
Width	68.1 in.				68.1 in.			
Wheelbase	105.1 in.				105.1 in.			
Track (front/rear)	58.9 in./58.5 in.				58.9 in./58.5 in.			
Base curb weight (manual/automatic)	2.5i 3,250 lbs./ 3,295 lbs.	2.5i SPECIAL EDITION 3,305 lbs./ 3,350 lbs.	2.5i LIMITED N/A/ 3,350 lbs.	2.5 GT LIMITED 3,365 lbs./ 3,435 lbs.	2.5i 3,305 lbs./ 3,350 lbs.	2.5i SPECIAL EDITION 3,375 lbs./ 3,420 lbs.	2.5i LIMITED N/A/ 3,420 lbs.	2.5 GT LIMITED N/A/ 3,500 lbs.
Coefficient of drag (cd)	0.31				0.32			

## INTERIOR DIMENSIONS

Headroom (front/rear)	39.5 in./36.5 in. (with moonroof: 37.6 in./36.5 in.)	40.5 in./39.1 in. (with moonroof: 38.7 in./37.1 in.)
Legroom (front/rear)	44.1 in./33.9 in.	44.1 in./33.9 in.
Shoulder room (front/rear)	54.4 in./53.7 in.	54.4 in./53.7 in.
Cabin capacity	93.1 cu. ft.	97.4 cu. ft.
Cargo capacity	11.4 cu. ft.	33.5 cu. ft. (with moonroof: 32.1 cu. ft.)
Maximum cargo capacity	11.4 cu. ft.	66.2 cu. ft. with rear seat lowered (with moonroof: 61.7 cu. ft.)



EXTERIOR

	2.5i SEDAN AND WAGON	2.5i SPECIAL EDITION SEDAN AND WAGON	2.5i LIMITED SEDAN AND WAGON	2.5 GT LIMITED SEDAN AND WAGON
Projector-beam low-beam and multireflector high-beam headlights	●	●	●	●
Projector-beam fog lights	○ <sup>2</sup>	○ <sup>2</sup>	●	●
Aluminum-alloy hood	●	●	●	–
Aluminum-alloy hood with functional scoop (feeds turbocharger intercooler)	–	–	–	●
Front bumper with lower air intake and integrated front spoiler	●	●	●	●
Body-color door handles and side mirrors	●	●	●	●
Body-color side mirrors with integrated turn signals	–	–	–	●
Heated side mirrors and windshield wipers de-icer	–	–	●	●
Two-speed windshield wipers with variable intermittent mode	●	●	●	●
Single-speed rear window wiper with fixed intermittent mode and de-icer (wagon)	●	●	●	●
Aerodynamic side ground effects	●	●	●	●
Aluminum-alloy tailgate with integrated rear spoiler (wagon)	●	●	●	●
Dual chrome exhaust outlets	●	●	●	●
Black-finish low-profile roof rails (wagon)	●	●	●	●
Power tilt/sliding-glass moonroof (sedan)	–	●	●	●
Panoramic tilt/sliding dual-panel moonroof (wagon)	–	●	●	●

SEATING AND TRIM

6-way manually adjustable driver's seat with manually adjustable lumbar support. 4-way manually adjustable front-passenger seat.	●	–	–	–
8-way power driver's seat with manually adjustable lumbar support. 4-way manually adjustable front-passenger seat.	–	●	●	–
8-way power driver's seat and 4-way power front-passenger seat, both with manually adjustable lumbar support	–	–	–	●
4-stage heated front seats	–	–	●	●
Performance-design front seats	–	–	–	●
Rear-center armrest with trunk pass-through (sedan)	●	●	●	●
60/40-split flat-folding rear seatback (wagon)	●	●	●	●
3-spoke steering wheel with manually adjustable tilt column	●	●	–	–
Leather-wrapped 3-spoke steering wheel with manually adjustable tilt column	–	–	●	●
Leather-wrapped 3-spoke MOMO® brand steering wheel with automatic transmission SPORTSHIFT® manual control buttons and manually adjustable tilt column	–	–	–	○ <sup>3</sup>
Leather-wrapped manual transmission shifter handle	–	–	–	●
Leather-wrapped automatic transmission shifter handle with titanium-metallic inlay <sup>4</sup>	–	–	●	○ <sup>3</sup>
Leather-wrapped automatic transmission shifter handle with woodgrain-patterned inlay <sup>5</sup>	–	–	●	○ <sup>3</sup>
Cloth upholstery	●	●	–	–
Leather-trimmed upholstery	–	–	●	●
Titanium metallic trim on doors and console <sup>4</sup>	●	●	●	●
Titanium metallic trim with woodgrain-patterned accents on doors and console <sup>5</sup>	–	–	●	●
Carpeted floor mats	●	●	●	●

CONVENIENCE FEATURES

Power front and rear windows with driver's auto-down	●	●	●	●
Electronically controlled cruise control	●	●	●	●
Dual cup holders in center console with retractable lid. Retractable dual rear cup holders.	●	●	●	●
Sun visors with extenders and illuminated vanity mirrors	●	●	●	●
Illuminated glovebox and in-dash storage compartment	●	●	●	● <sup>6</sup>
Center console with armrest and enclosed storage compartment	●	●	●	●
12-volt power outlet in dash and center console storage compartment	●	●	●	●
Trunk/cargo-area-concealed under-floor storage tray. Concealed storage compartments in wagons' cargo-area side panels. Dual grocery bag hooks.	●	●	●	●
Retractable/removable cargo-area cover. 4 tie-down hooks. (wagon)	●	●	●	●

● Standard   ○ Optional   – Not available

## AUDIO AND COMMUNICATION SYSTEMS

	2.5i SEDAN AND WAGON	2.5i SPECIAL EDITION SEDAN AND WAGON	2.5i LIMITED SEDAN AND WAGON	2.5 GT LIMITED SEDAN AND WAGON
120-watt 6-speaker audio system with single-disc in-dash CD player	●	●	–	–
120-watt 6-speaker audio system with 6-disc in-dash CD changer	–	–	●	●
Touch-screen GPS navigation system	–	–	–	○ <sup>7</sup>

## INSTRUMENTATION

Analog speedometer, tachometer, coolant temperature and fuel gauges	●	●	●	●
Sport-design electroluminescent lighting	–	–	–	●
Gauge needles full-sweep on start-up	●	●	●	●
Digital odometer and automatic transmission (when equipped) shift-position indicator	●	●	●	●
Digital trip computer displaying fuel economy, driving range, digital clock and ambient temperature	●	●	●	●
Multifunction screen displaying navigation system information, trip computer functions, maintenance intervals, controls for various vehicle settings, calendar, calculator and memo-taking function	–	–	–	○ <sup>7</sup>

## CLIMATE CONTROL

Manually adjustable CFC-free air conditioning system with rotary controls for temperature, 4-speed fan and airflow direction	●	●	–	–
Dual-zone automatic digital climate control system with controls for temperature, 6-speed fan, airflow direction, automatic mode and CFC-free air conditioning	–	–	●	●

## SECURITY

Keyless entry system with trunk release (sedan) or cargo-area unlock (wagon) and answer-back electronic chirp	●	●	●	●
Antitheft security system with engine immobilizer and answer-back electronic chirp	●	●	●	●

## SAFETY

Dual-stage deployment driver and front-passenger front air bags (SRS) <sup>8</sup>	●	●	●	●
Subaru advanced frontal air bag system with driver's seat position sensor and front-passenger occupant detection sensor (SRS) <sup>8</sup>	●	●	●	●
Side-curtain air bags protecting front and rear outboard occupants (SRS) <sup>8</sup>	●	●	●	●
Seat-mounted front side-impact airbags (SRS) <sup>8</sup>	●	●	●	●
Height-adjustable Active Front Seat Head restraints	●	●	●	●
Three individual height-adjustable rear head restraints (wagon). Height-adjustable outboard rear head restraints (sedan).	●	●	●	●
Height-adjustable 3-point front seatbelts with pretensioners and force limiters. 3-point rear seatbelts at all seating positions.	●	●	●	●
Rear child-safety door locks	●	●	●	●
LATCH system: Lower Anchors and Tethers for Children	●	●	●	●
Safety brake pedal system	●	●	●	●
Energy-absorbing collapsible steering column	●	●	●	●
Ring-Shaped Reinforcement Frame body structure	●	●	●	●
Daytime Running Lights (DRL)	●	●	●	●

## OPTIONAL EQUIPMENT

Touch-screen GPS navigation system	–	–	–	○ <sup>7</sup>
4-speed adaptive electronic direct-control automatic transmission with SPORTSHIFT manual control	○	○	●	–
5-speed adaptive electronic direct-control automatic transmission with SPORTSHIFT manual control	–	–	–	○ <sup>3</sup>

● Standard    ○ Optional    – Not available

<sup>1</sup> Some 2006 Legacy models with the naturally aspirated 2.5-liter engine distributed for sale in California (and in Maine, Massachusetts, New York and Vermont which have adopted California Specification Emission Control Systems and Warranties and are registered for use in those states) will be specially equipped to meet the California-certified Partial Zero Emission Vehicle (PZEV) credited Super Ultra Low Emission Vehicle (SULEV2) requirements. The manufacturer's PZEV emission control system warranty coverage is for 15 years or 150,000 miles, whichever comes first. For complete warranty information, including coverage and exclusions, see your Subaru dealer.

<sup>2</sup> Available as an accessory. See your dealer.

<sup>3</sup> Standard on 2.5 GT Limited Wagon.

<sup>4</sup> With Tweed Flat Woven cloth and Charcoal leather upholsteries. See color combinations chart.

<sup>5</sup> With Taupe Flat Woven cloth and Taupe leather upholsteries. See color combinations chart.

<sup>6</sup> Optional navigation system replaces in-dash storage compartment.

<sup>7</sup> Available only on 2.5 GT Limited Sedan with optional automatic transmission.

<sup>8</sup> The Supplemental Restraint System (SRS) (air bags) affords the driver and the front and rear outboard passengers additional protection in moderate to severe frontal and side-impact collisions. This system provides supplemental protection only, and seatbelts must be worn in order to avoid injuries to out-of-position occupants upon bag deployment and to provide the best combined protection in a serious accident. Children should always be properly restrained in the rear seat.

Some images shown are for illustration purposes only. Specifications in this brochure are based on the latest product information available at the time of publication. For the most up-to-date product information, log on to [www.subaru.com](http://www.subaru.com). Some equipment shown in photography in this brochure is optional at extra cost. Specific options may be available only in combination with other options. Specific combinations of equipment or features may vary from time to time and by geographic area. Certain accessories and equipment may not be available at the time of publication. Subaru of America, Inc., reserves the right to change or discontinue at any time, without notice, prices, colors, materials, equipment, accessories, specifications, models and packages without incurring any obligation to make the same or similar changes on vehicles previously sold. Colors shown may vary due to reproduction and printing processes. This brochure was prepared by Subaru of America, Inc. A warranty from Subaru of America, Inc., is available only on cars sold to the first retail purchaser through an authorized Subaru dealer in the continental U.S. or Alaska. Subaru, SUBARU BOXER, Legacy and MOMO are registered trademarks. SPORTSHIFT is a registered trademark of Prodrive Ltd. HomeLink is a registered trademark of Prince Corporation, a wholly owned subsidiary of Johnson Controls. For more information, contact your Subaru dealer or log on to [www.subaru.com](http://www.subaru.com).





2006 SUBARU LEGACY

Redefining invigoration in three dimensions. | **Think. Feel. Drive.**