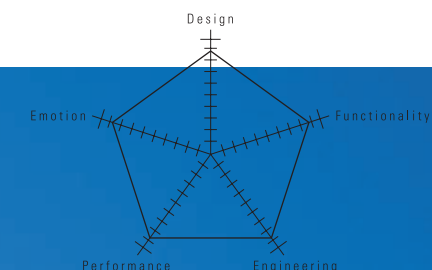


FORESTER





The Perfect Balance

Subaru Symmetrical AWD

The symmetry of SUBARU BOXER Horizontally-Opposed Engine design is perfectly matched by that of the drivetrain's layout. Subaru has spent over 30 years refining both, and developing innovative suspension technologies to complement them. All three work in harmony: the engine's low centre of gravity enhancing All-Wheel Drive (AWD) ability, in turn allowing sophisticated suspensions to deliver precise feel and handling. Every dynamic force acting on Forester is equalised, which is why you'll always feel at one with it, wherever you drive.

SYMMETRICAL AWD



***Advanced technology for
an increasingly demanding world.***

In the city or way out beyond,

the driving environment is pretty tough.

That's why the Subaru brand represents

three distinct promises, interwoven in one.

First, radical new thinking creates high technology advances.

*Then, a passionate feel for engineering translates them
into useable reality.*

In turn, whenever you drive a Subaru,

you appreciate the appeal of multi-purpose practicality.

*Think. Feel. Drive. Three elements in a unique equation which
sums up Subaru's vision for a world of different demands.*

They are epitomised in the latest Forester –

a high-tech machine built to tame the wilds of nature.

But they also apply across the whole Subaru range,

supported as always by a wealth of FIA WRC-bred experience.

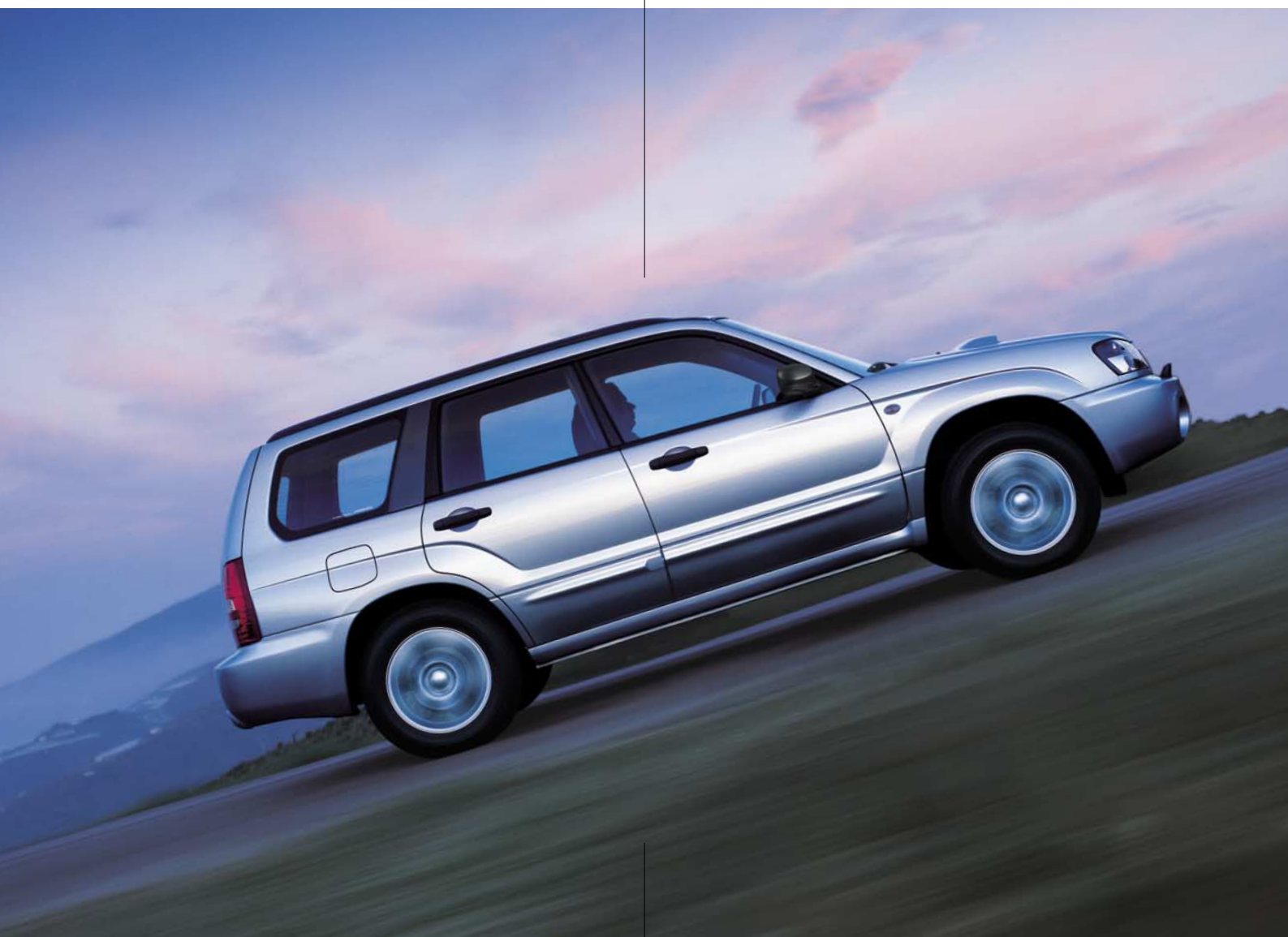
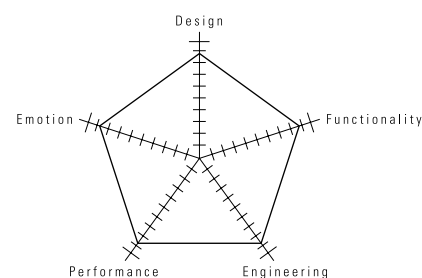


*- Petter Solberg & Phil Mills -
2003 FIA World Rally Championship for Drivers & Co-Drivers*

Forester.
For every life you lead.

Consider “the Crossover” concept of Subaru elevated to new heights. First, think about a commanding driving position and interior versatility no Sedan could offer. Then, there’s the experience of on and rough-road ability no ordinary Station Wagon provides. Forester lets you have both. Choose from the all-new 2.5XT, or the 2.0XT and 2.0X. Perhaps the best way to decide is to test drive all three.





2.0XT



2.5XT

Synchronise work with play.

The journey from working day to leisure time and back again is seamless in a Forester. Its technology advances and intelligent engineering make it easy to combine the 'must-do' with the 'want-to-do' – in the city

or the great outdoors. Again, the symmetry of Subaru makes the transition effortless. Bringing calm and order to commuting, as well as adding extra stimulus to your experience of more pleasurable activities.

Comforting thoughts.



An overall sense of everything being in the right proportion is fundamental to the emotive attraction of Forester. You'll feel at one with the exterior styling, of course. You'll identify readily with the image it projects, and what it says about your personality.

Look deeper, and there's the reassurance of the brand values and build quality that are synonymous with Subaru. Each and every detail contributes to your comfort, whenever you take your seat inside.

Transcendental powers.

It's easily possible to produce an AWD vehicle, which can carry all and go anywhere, except you're likely to compromise ride and handling in a tall, top-heavy design that handles tarmac with the aplomb of a tank. Not so however with Forester, in which "the Crossover" concept is embedded. Flexible power, smooth ride, crisp handling and a low centre of gravity are synthesised with long travel suspension and generous ground clearance in a rugged, reliable, synergy of hi-tech brain and brawn, engineered to handle every twist and turn beautifully.



Totally symmetrical lifestyles.

Mountain biking adventure to business trips and motorway cruising, Forester takes them all in its stride. The idea is prompted by the need for an all-rounder that lets you think outside of the usual,

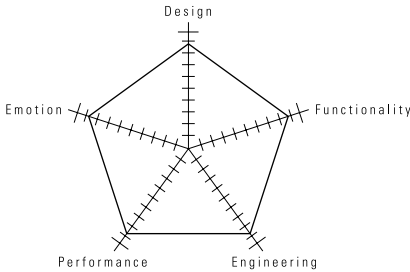
listen to your soul yet satisfy your everyday needs. If necessity is the mother of invention, then this is as close as you can come to melding the demands of city living with the intuitive call of leisure.



2.0X (Optional bike carrier)



2.0X





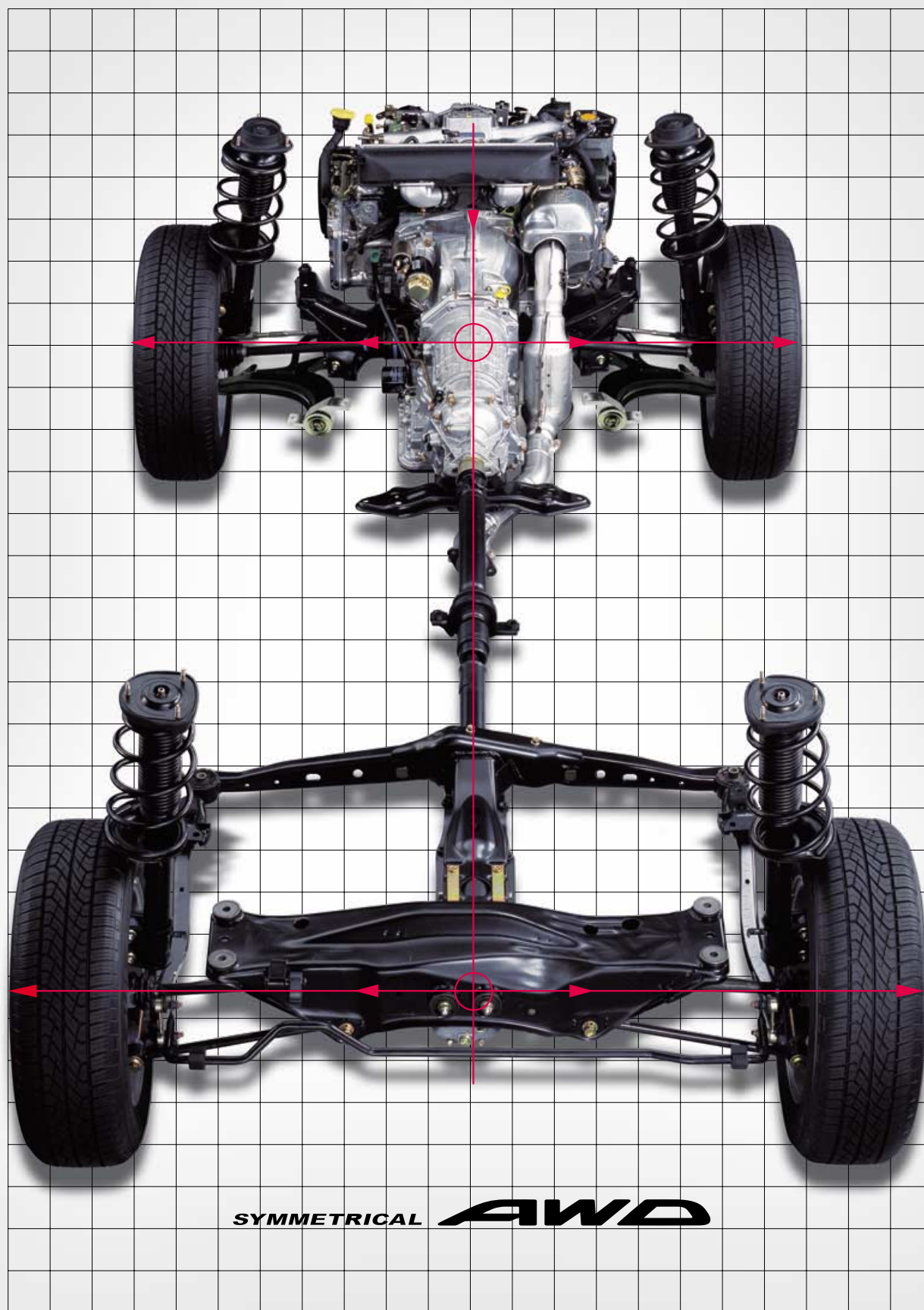
Escape the ordinary.

Tamed or wild – Forester is purpose-built to handle every bend beautifully. One look says it all. Purposeful wheel arches and aluminium wheels, striking shaped tailgate – all speak of driving a different road. But here's a style that really hits the headlines in the high technology surroundings of modern cityscape living, with the ultimate in urban presence. Speculate about spacious interior, generous legroom, stunning all-round visibility, cutting edge aerodynamics, incredible cornering powers with performance and economy – Forester is the ultimate synthesis of two very different worlds.

Go up in the world.

Conviction through cohesion is the theme of Forester's 'Think. Feel. Drive.' core philosophy. Extra ground clearance and long-travel yet supple suspension means you can tackle the toughest conditions in comfort. Powerful performance and practicality are wedded with them through the careful application of the most advanced technology – all developed through the strengths of Subaru's clear insight into what this unique vehicle should offer.





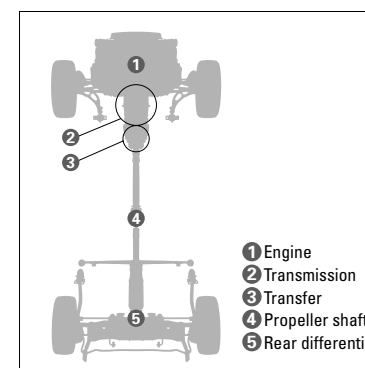
SYMMETRICAL AWD

The value of the mechanism called Subaru Symmetrical AWD is recognised by the world.

The feeling of total compatibility.

What could possibly have driven Subaru on a quest to think differently about car design for more than three decades? Why persevere with a combination of SUBARU BOXER Horizontally-Opposed Engines and totally linear drivetrain layout when everyone else seemed to favour more conventional approaches? The reason is simple. Two high technology thoughts that work together to produce results and whose potential has only been exploited by Subaru. It's all about a philosophy of rhyme, rhythm and reason.

All the main components, from engine to transmission, transfer to propeller shaft and rear differential, are arranged in line, with no doglegs or deviations – with a laterally symmetrical layout. Coupled with jewel-like engineering, Subaru brings together all the benefits to give neutral balance and poise, for ideal weight distribution, front to rear and side to side.



SUBARU BOXER



Lightweight and compact Horizontally-Opposed Engines are intrinsically smoother and more efficient than In-line or V-type Engine. That's why Subaru has carefully thought through the idea from day one. Superb rotational balance means less vibration, because the pistons mutually counteract the lateral vibration. Obviously, the flatter design also mean the engine can sit much further down within the chassis, which gives a lower centre of gravity and total compatibility with the AWD layout and suspension systems.

DRIVE SUBARU



2.5XT

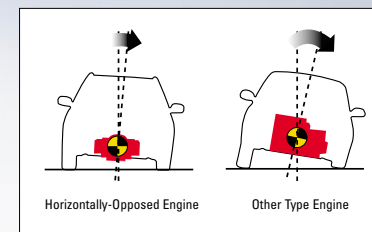
Explore the envelope.

Drive the difference that forward-thinking technology and engineering bring to Forester. Because everything is perfectly resolved and ordered, there's a unique symmetry weight distribution and refinement on the road. So, when you're on the school run in a down-pour, Forester's perfect weight balance gets you safely there, certain in the knowledge that secure handling and tenacious grip will bring security and peace of mind – whatever the road conditions. It's almost as if the car can anticipate your thoughts, providing a feeling of stability and safety that enhances the real joy of driving.



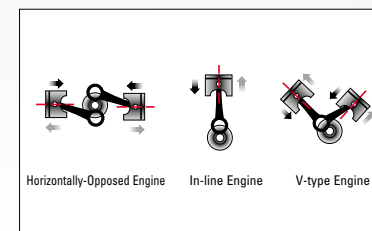
Everything is direct, involving and yet exciting – without the undesirable threats of sudden loss of grip or traction.

Three distinct advantages.



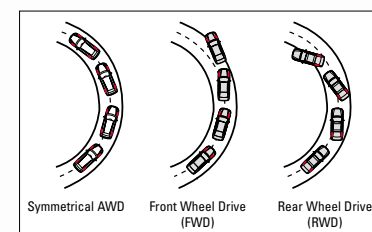
Better balance

Whenever you turn a corner, centrifugal force always causes the car to turn towards the outside edge of the bend. How much it affects handling depends on the body's centre of gravity. If it's high, it takes longer to regain balance and control. If it's low – as with the Horizontally-Opposed Engine – there's less deviation from your chosen direction. Body roll is reduced, and the whole feeling of stability is considerably improved. The overall sensation is one of fuss-free cornering, thanks to Subaru's applied technology.



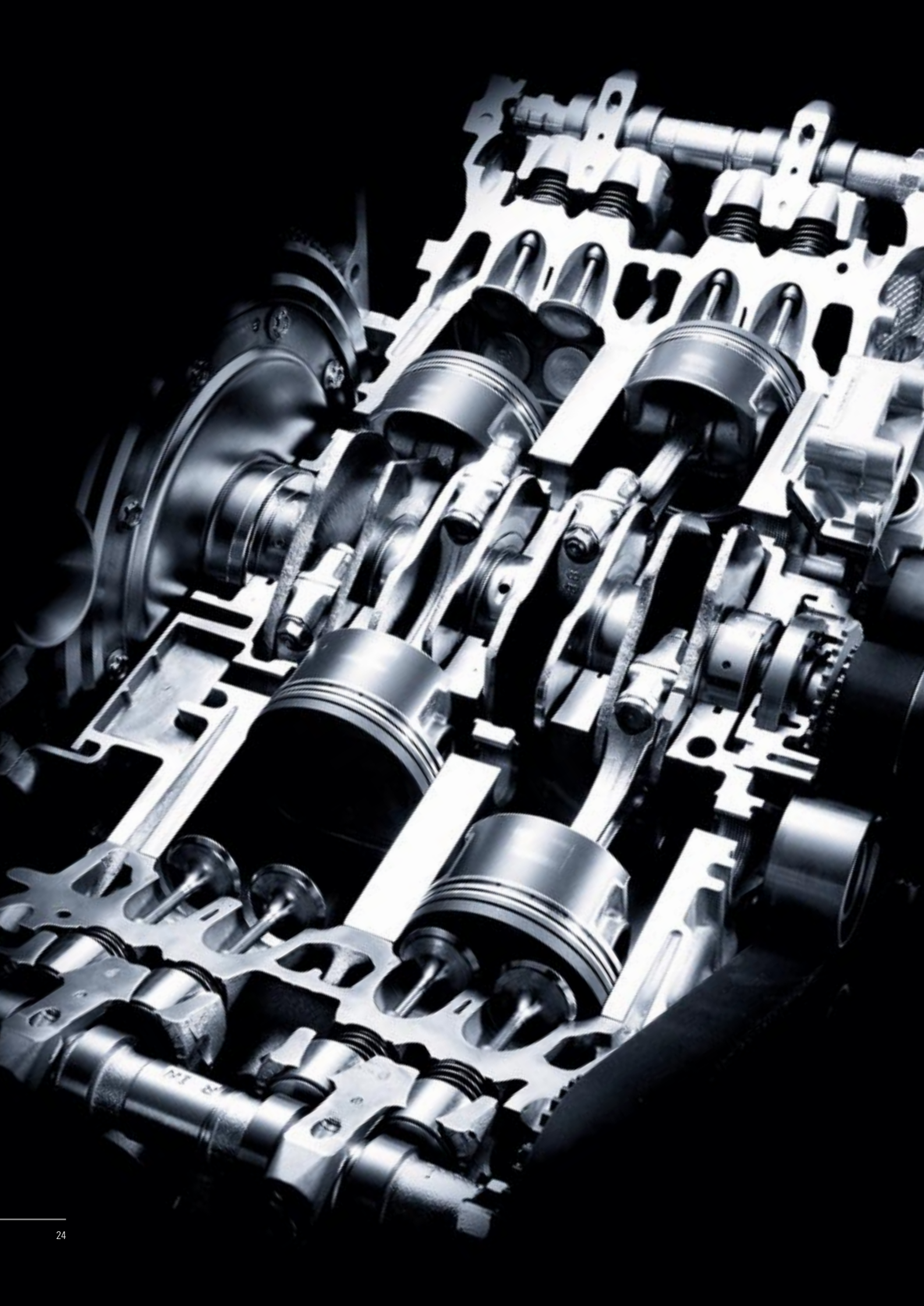
Less vibration

With its 180 degree configuration, Subaru's Horizontally-Opposed Engine cuts down vibration dramatically, by eliminating the inertia of opposing pistons – unlike with In-line or V-type Engine, where pistons are competing with each other. The result with Subaru is smooth, seamless progress right through the rev range, and unprecedented driving comfort.



More grip and traction

One reason that Subaru has devoted so much time and energy to perfecting full-time All-Wheel Drive is the system's inherent advantages over two wheel drive in cornering. By transmitting power through all four tyres, neutral steering naturally turns the car in the direction of the curve, for confident, controlled handling. By contrast, when traction is only delivered through two tyres, lateral forces tend to make a car try either to understeer or oversteer, which can lead to instability.



the POWER

Advanced engine technologies.

Subaru always looks to push the barriers of performance and environmental responsibility with refinements to the well-proven Horizontally-Opposed Engine design. The line-up for the latest Forester – including a new 2.5-litre turbo – emphatically proves the point: these are powerplants for the future of all-round performance.

More new technologies

Quality should not be compromised for power, that's why Subaru strives to ensure that each aspect is to an equal standard. Casting high strength sintered metal into aluminium supports that hold the crankshaft provides the ideal distance between crankshaft and engine, because the difference in heat expansion is the same, it also minimises the vibration noise (only for 2.5XT).



Steel casted journal

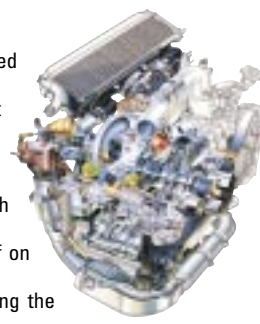
SUBARU BOXER 2.5-litre turbo engine

New to Forester, but carefully developed from the technology of the World Rally car, this engine lends a new dimension to the 'Think. Feel. Drive.' concept. Imaginative engineering and the classic Horizontally-Opposed layout mean power is instantly on tap at the touch of the throttle, with silky-smooth delivery at both low and high speeds.



SUBARU BOXER 2.0-litre turbo engine

Another potent power plant – again developed through FIA WRC experience – means that response is instant in this latest version of the trademark Horizontally-Opposed Engine. With Forester, it sets new levels in the cohesion of on and rough-road capability as well as delivering the traditional smoothness of power with the economy of fuel consumption that everyone needs.



SUBARU BOXER 2.0-litre engine

Sharing the same family characteristics as its turbocharged relations, this free-revving naturally-aspirated unit also promises excellent fuel economy, helped by electronic control exhaust gas re-circulation. By utilising the best of various technologies, improved driving performance and extra engine efficiency are inextricably interlinked.





the SHIFT

Transmission technologies trained for the job.

Making best possible use of the built-in advantages of AWD and a symmetrical drivetrain layout, the automatic and manual transmissions in the Forester apply the latest technology where it's most needed. The feel and touch of every gearchange is perfectly matched and at one with the on or rough-road conditions, giving every ounce of performance while making sure that fuel economy is at its best. Unlike other vehicles, with their complex differentials and torque split systems, the linear powertrain in Forester means dedicated, precise performance and traction, whenever you need it.

Electronically-controlled 4-speed Automatic Transmission (E-4AT)

This advanced, electronically controlled 4-speed automatic transmission with direct hydraulic control system features a gate-type selector, with even smoother gearshifts that become almost imperceptible. Married to the latest generation intelligent, active torque split system, torque distribution is electronically controlled, and automatically adjusted between front and rear wheels to react to any changes in driving conditions.



5-speed Manual Transmission (5MT)

Available on all Forester models, this 5-speed manual gearbox is matched by a compact centre differential gear, coupled with a viscous LSD (installed in both the centre and rear differential), which provides optimum torque distribution between front and rear wheels to react to any changes in driving conditions. This dual-range transmission (for 2.0X only), which allows you to switch between 'Hi' and 'Lo' modes (the 'Lo' mode reinforces go-anywhere capability and towing) uses a flexible flywheel that reduces engine vibration and noise still further.



Dual-range select lever

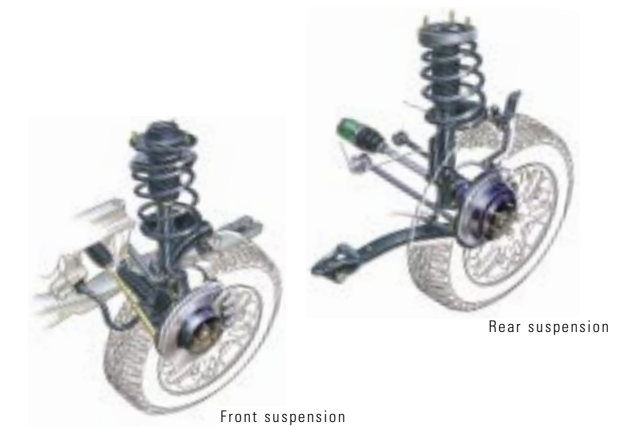
the DRIVABILITY

Suspension technologies to complement both.

Given the symmetry of Forester's engines and transmissions working in such harmony, you have to have a highly-developed suspension system to match. One that will provide all the stability you need in a higher-riding vehicle, whether you're driving fully laden on a long motorway cruise, or negotiating rough terrain. Forester's suspension has been thoroughly thought through, to give the exact balance of strength and suppleness you want in a multi-purpose vehicle. Working in concert with AWD and the engine's low centre of gravity, it keeps pitch and roll to a minimum, letting you drive with both poise and panache.

Suspension

Building on an enviable rallying background, Subaru has completely re-tuned the dynamics of chassis and suspension in the Forester, to improve stability, steering responsiveness and overall rigidity. Given the built-in advantage of a low centre of gravity, it means that on-road comfort can be balanced with rough-road performance as never before. Even in the tightest corners, and when full loaded, the lack of roll and pitch so often associated with unwieldy, high riding 4x4s is refreshingly absent.



Self-levelizer

Using self-levelizer struts for the posture recovery capability affords you the greatest possible driving control when carrying a full load. It's yet another example of advanced technology supporting all the other elements in the system, providing you with superb feel and road-holding capability.

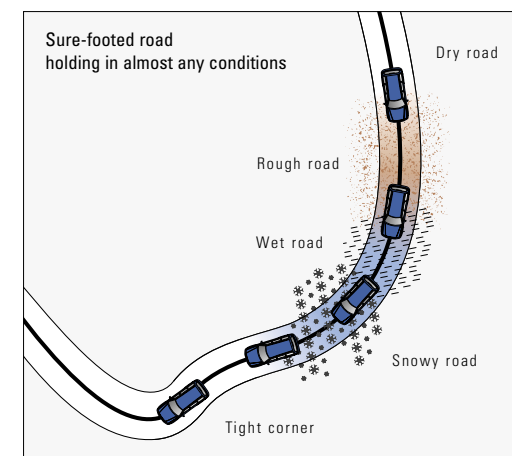


the ACTIVE safety

Active safety technologies.

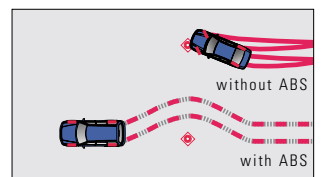
Safety starts with the AWD

Sure-footed grip on every kind of surface, in almost any conditions, is the first step to keeping you safe inside. Which is why Forester is one of the most protective vehicles you could drive. Point it into tight bends, take wet roads or mud covered tracks, and you feel more confident knowing that power will be transmitted to where the most traction is. At the same time, the symmetrical drivetrain adds extra stability. And remember, because this is full-time All-Wheel Drive, these benefits are taking care of you every second of the journey – even on dry, straight roads.

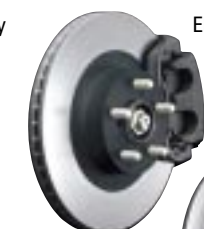


ABS braking

4-sensor/4-channel ABS is standard on the Forester – working through compact sensors on all four wheels. This innovation gives greater control



accuracy, detecting the moment of lock-up instantly, allowing you to brake safely and steer away from the source of trouble at the same time. Also, the Electronic Brake-force Distribution system complements ABS.



Front brake

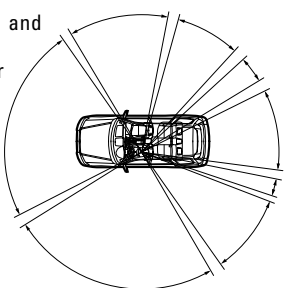


Rear brake

This 'smart' technology minimises the change in braking distance due to differences in loading conditions, by actively controlling the rear wheel braking force.

Seeing safer

Thanks to a higher driving position and panoramic windows, visibility is better all round in the latest Forester. The thinking being that the easier it is to see potential hazards, the easier it will be to avoid them.



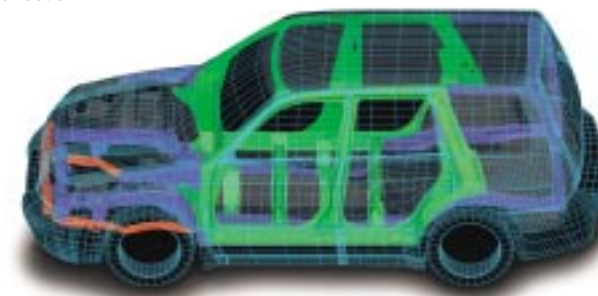
Best horizontal vision in its class.

the PASSIVE safety

All-round protection.

Ring-Shaped Reinforcement Frames

This highly advanced concept has reached world-class levels of collision safety, yet through brilliant thinking, actually reduces weight at the same time. It's a seemingly impossible balance that could only be achieved through perfecting leading edge welding techniques on centre pillars and front frame support members, matched by added energy absorption at the door shoulder level. The whole effect is that you and your passengers are surrounded by a circle of reinforced protection against collisions from any direction.



■ : Ring-Shaped Reinforcement Frames ■ : Sub frame
■ : Chassis Reinforcement Frames

Pedestrian protection

Greater distance between bonnet and engine, energy absorbing front bumpers and detachable module type wipers – all show that we're thinking about the safety of those outside the Forester as well as in.



After collision

Module wiper

Aluminium bonnet

Lightweight, and especially designed to minimise pedestrian injury, absorbing impacts and keeping the head away from contact with more solid components underneath.



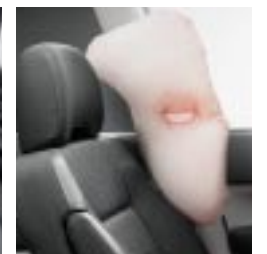
Airbags, seat belts and active headrests

Front seat active headrests are a novel safety feature. They move forward automatically in a rear end collision, cradling the head and lessening the risk of whiplash injuries. SRS* dual front and front side airbags are standard (except 2.0X for which dual front side airbags are optional.) Front seatbelts have high output pretensioners and load limiters, while child tether anchors and ISO-FIX child seat anchors are naturally in place – because when Subaru thinks safety, we think of everything.

*SRS = Supplemental Restraint System.
Most effective when used in conjunction with seat belts.



SRS* dual front airbags



SRS* dual front side airbags



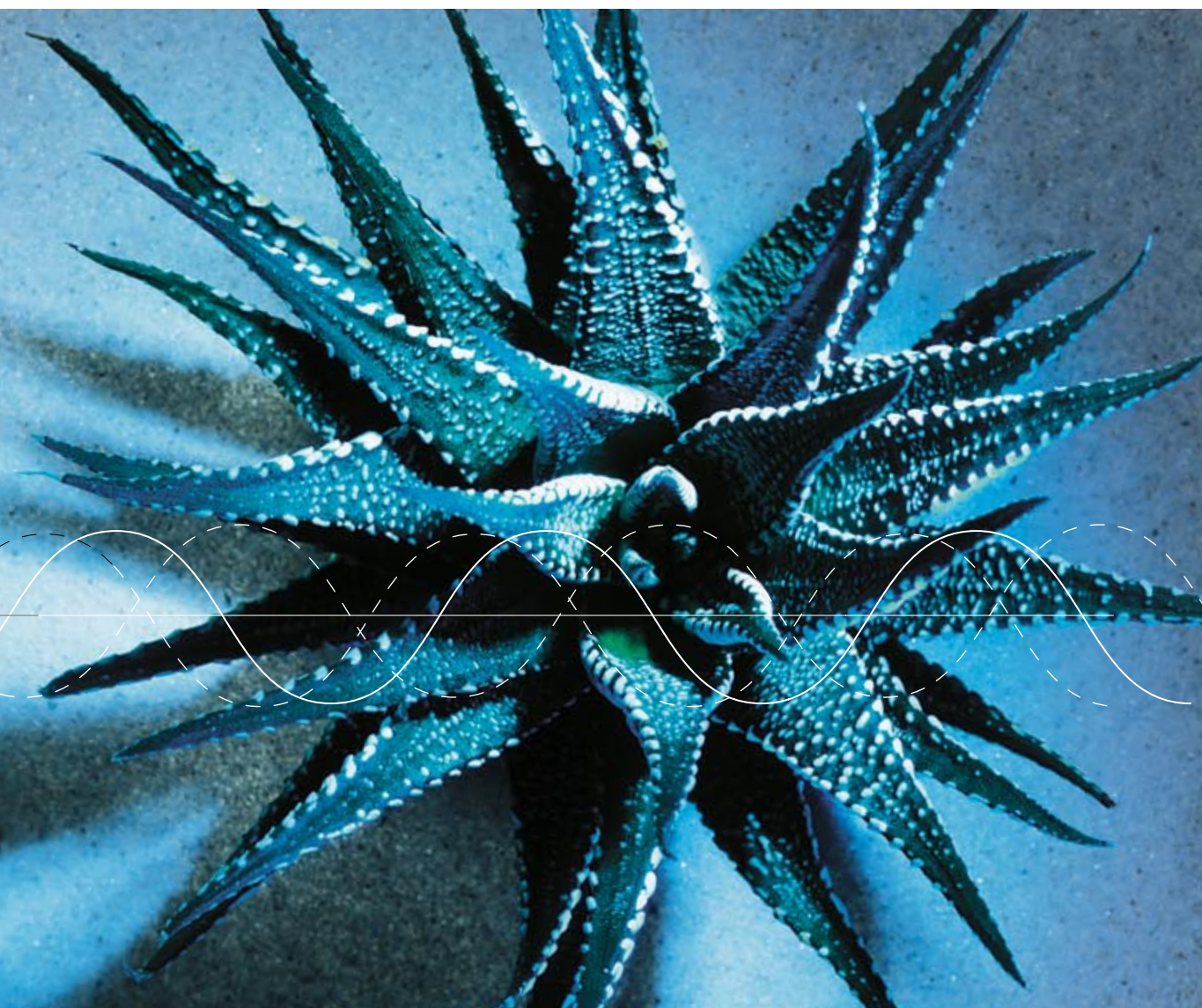
Three 3-point rear seat belts



Active headrests

thinking responsibly

We like all Subaru owners to feel that they're driving cars that are as eco-friendly as we can possibly make them. That's because we're completely committed to environmental and energy issues. So, naturally, we look to reduce weight and improve aerodynamics to improve economy, while cutting down emissions to lowest possible levels. But we also develop recycling technology that helps to make best use of natural resources and reduce waste. That's the kind of technology which will bring us all a better future.





2.5XT

the SPACE

The Flexible Space.

The capacity for everything.

When you want to make full use of Forester's leisure potential in the great outdoors, you'll find room inside for everything you need. 60/40 split fold rear seat offer up a cavernous 1,629 litres* of storage space, with a covered cargo box in the floor. All round the inside there are clever, useful spaces for stowing a whole host of different kinds of things.

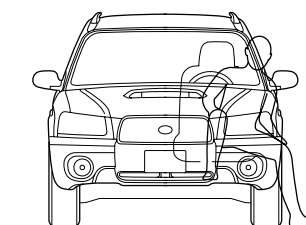
*Measured by VDA V14



2.5XT



The Forester offers impressive interior space all round, with generous width, headroom and rear legroom. Loading luggage through the rear tailgate is easy, too, and cargo floor length is equally cavernous.



Getting in and out of the Forester's capacious interior is simple as well. Access is easy, thanks to the careful design of seats and door openings.



60/40 split fold rear seat



Full flat luggage space



Retractable cargo cover

A higher quality of cockpit.



2.5XT
(with optional Navigation system)

A commanding cockpit for the driver sums up the improvements in the sporty, quality feel of Forester as an SUV, complete with its new design emphasis on the layout of the three individual meters. It's easier to see the gear select indicator, too, by displaying it in LCD, which is set in the lower part of the centre meter. There's also an all-new design of steering wheel, while the shape of the controls and inner structure of the fully-automatic air conditioner have been redesigned.

A higher quality of living.



2.5XT
(with optional Navigation system)

Take the supreme comfort of the 2.5XT's leather seats, or the new high quality material used in the 2.0X itself. Either way, you can sit back and enjoy complete comfort. Sophisticated layout means plenty of legroom and wide interior space for the passengers. So the environment is calm and comforting, but still with a distinctly sporting feel.



Forester 2.5XT

(5MT, AWD)
Dimensions : L x W x H: 4,450 x 1,735 x 1,585 mm.
Engine: Horizontally-Opposed, 4-cylinder, Turbocharged DOHC, 16-valve, gasoline engine
Displacement: 2,457 cc.
Max output: 155 kW (210 PS) / 5,600 rpm

Photo (upper): Crystal Grey Metallic
(lower): Regal Blue Pearl / Grey Metallic
P40 / P41: The optional Navigation system is used.





Forester 2.0XT

(5MT / E-4AT, AWD)
 Dimensions : L x W x H: 4,450 x 1,735 x 1,585 mm.
 Engine: Horizontally-Opposed, 4-cylinder, Turbocharged DOHC, 16-valve, gasoline engine
 Displacement: 1,994 cc.
 Max output: 130 kW (177 PS) / 5,600 rpm



Photo: Obsidian Black Pearl
 P43: The optional sunroof is used.

Forester 2.0X

(5MT Dual-range/ E-4AT, AWD)
 Dimensions : L x W x H: 4,450 x 1,735 x 1,590 mm.
 Engine: Horizontally-Opposed, 4-cylinder, SOHC, 16-valve, gasoline engine
 Displacement: 1,994 cc.
 Max output: 92 kW (125 PS) / 5,600 rpm



Photo: Premium Silver Metallic / Grey
 P42: The optional high quality audio, automatic air-conditioning system and seat heater are used.

Exterior Equipment

Wherever you look around the outside of Forester, you'll see how cleverly we've thought out its striking style and detailing. Don't forget, there is also a range of complementary options to choose from, that help make your Forester even more outstanding.



Fog lamp
(Standard on 2.5XT and 2.0XT, optional on 2.0X)



Large glass sunroof
(Standard on 2.5XT, optional on 2.0XT and 2.0X)



Roof rails



In-glass antenna



Heated door mirrors



16 inch aluminium alloy wheel (2.5XT)



16 inch aluminium alloy wheel (2.0XT)



15 inch aluminium alloy wheel (2.0X / Option)

Interior Equipment

Inside, we believe comfort and practicality should go hand in hand. So, you'll find a place for everything, because we've thought of all the different roles Forester can be called on to play. Whichever one you choose, we'll help you enjoy it to the full.



Cruise control
(Standard on 2.5XT, optional on 2.0XT and 2.0X)



Navigation system (Option)



High-quality audio with 7 speakers
(Standard on 2.5XT and 2.0XT, optional on 2.0X)



Audio satellite control switch (2.5XT)



Automatic air-conditioning system
(Standard on 2.5XT and 2.0XT, optional on 2.0X)



Centre and rear cup holders



12-volt cargo area power outlet



Seat lifter

Accessories

There's no doubt that the Subaru Forester is eye-catching from the start. It's also enviably well-equipped as standard – especially when compared with other vehicles in its price range. However, we recognise that some owners will want to impress their personality still further on this unique vehicle. That's why we have a full range of Subaru Genuine Accessories available to make yours even more individual. Which promises as much versatility and freedom as does the Forester itself.



Sports style (2.5XT)
Optional Front grille, Grille side panel, Front under spoiler,
Side under spoiler, Rear under spoiler and Alloy wheel (16 inch)



Cross-country style (2.0X)
Optional Front bumper guard, Fender flare, Bumper protector kit,
Roof spoiler, Side protector kit, Rear gate handle, Side visor, Muffler extension,
Trailer hitch, Rear bicycle holder (Installed on tow ball), Dog guard (K/M)
and Alloy wheel (15 inch)



Great journeys begin in a Subaru. Enjoy.



Front bumper guard



Rear gate handle



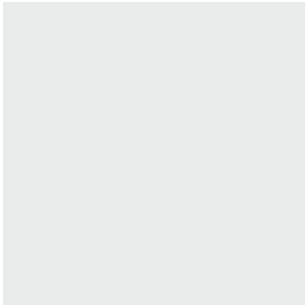
Navigation radio (Pictogram Type)



Auto-dimming compass mirror

Exterior Colour

Upper colour



Pure White



Premium Silver Metallic



Regal Blue Pearl



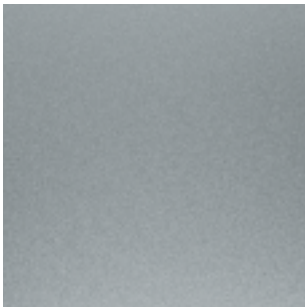
Red Metallic



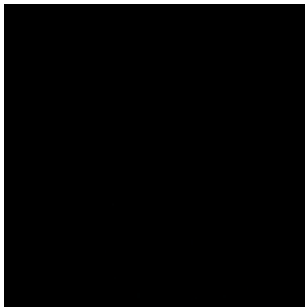
Dark Green Mica



Champagne Gold Opal



Crystal Grey Metallic

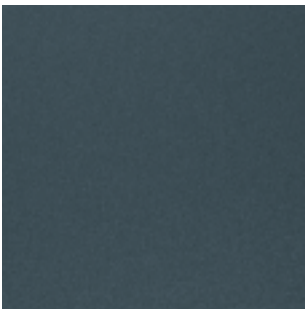


Obsidian Black Pearl

Lower colour



Grey Metallic



Grey

Colour Chart

	2.5XT		2.0XT		2.0X		
	Monotone	Two-tone Grey Metallic	Monotone	Two-tone Grey Metallic	Monotone	Two-tone Grey Metallic	Two-tone Grey
Pure White	●		●		●	●	
Premium Silver Metallic	●		●		●	●	●
Regal Blue Pearl	●	●	●	●		●	●
Red Metallic	●		●			●	●
Dark Green Mica		●		●		●	●
Champagne Gold Opal	●		●				
Crystal Grey Metallic	●		●				
Obsidian Black Pearl	●		●			●	●

subaru-global.com

