



SUBARU

# LEGACY





### **Most Comfortable and Spacious**

Abundance is what defines comfort and space in our most refined sedan ever. It means soft-touch materials throughout the spacious cabin, including a generous 1004 mm of legroom for rear-seat passengers. And the Legacy GT trim indulges you even further with premium upgrades, including genuine Nappa Leather.

### **Most Advanced**

Every Legacy now includes an 11.6-inch tablet-style infotainment system for easy, intuitive connection. Through SUBARU STARLINK® Multimedia, you can enjoy your music and apps almost anywhere you go with standard wireless Apple CarPlay®<sup>1</sup> and Android™ Auto<sup>2</sup> integration.





## Arrive like you've never imagined.

### Meet the 2023 Subaru Legacy.

It's that feeling you get when you reach the next level—when the latest safety technologies combine with renowned Subaru reliability to give you confidence. A sense of connection is made possible by advanced technology, and you experience the warm invitation of premium materials and abundant space. You're here. Feel the love, for all the right reasons.


#### Safest

Innovations in the Legacy look out for you and help keep you focused on the road, including the standard EyeSight® Driver Assist Technology<sup>3</sup> and the available DriverFocus® Distraction Mitigation System<sup>4</sup>. Underlying all this is the Subaru Global Platform for a more stable and secure ride.

#### Most Reliable

This has always been a sedan designed to last. One of the many reasons is Subaru core technology, featuring Subaru Symmetrical Full-Time All-Wheel Drive—standard on every Legacy.

1 Apple CarPlay® is a registered trademark of Apple Inc.<sup>1</sup> 2 Android™ is a trademark of Google LLC<sup>1</sup>. 3 EyeSight® is a driver assist technology, which may not operate optimally under all driving conditions. The driver is always responsible for safe and attentive driving. System effectiveness depends on many factors such as vehicle maintenance, weather and road conditions. See Owner's Manual for complete details on system operation and limitations. 4 The DriverFocus® Distraction Mitigation System is a driver recognition technology designed to alert drivers if their attention to the road wavers or if the driver's face appears to turn away. The driver is always responsible for safe and attentive driving. System effectiveness may be affected by articles of clothing worn on the head or face. See Owner's Manual for complete details on system operation and limitations.



**We've been  
expecting you.**

With next-level comfort and generous space, the Legacy is designed to welcome you every time. With SUBARU STARLINK® Connected Services, you have Remote Engine Start with Climate Control<sup>1</sup> which lets you set the perfect temperature inside even before you get in. The experience continues with a roomy cabin, refined soft-touch materials and a heated full-circumference steering wheel. To meet personal preferences, you can also opt for heated rear seats<sup>2</sup>. And thanks to a body structure that optimizes sound insulation, the Legacy is noticeably quiet inside.





1 Requires Keyless Access with Push-Button Start and subscription to SUBARU STARLINK® Connected Services. Activation with subscription required. 3-year subscription included. See your retailer for details.  
2 Availability varies by trim level. See your retailer for details.





Genuine Nappa Leather



Wide-angle mono camera





## You are here. Experience it.

### Legacy GT

Wherever your road leads, the Legacy GT is there to elevate the moments along the way. Its sport-tuned suspension and steering respond with precision, while SI-DRIVE puts you in control of efficiency and performance. Inside, exclusive Black Nappa Leather-trimmed upholstery surrounds you in comfort—a feeling that’s heightened by heated and ventilated front seats, heated rear seats and the rich, warm sound of the Harman Kardon®<sup>1</sup> premium audio system. Meanwhile, safety features like the award-winning DriverFocus®<sup>2</sup> Distraction Mitigation System<sup>2</sup>, front-view camera and enhanced EyeSight<sup>3</sup> with new wide-angle mono camera offer greater peace of mind. It’s the Legacy in its most advanced form.

1 Harman Kardon® is a registered trademark of Harman International Industries, Inc. 2 The DriverFocus® Distraction Mitigation System is a driver recognition technology designed to alert drivers if their attention to the road wavers or if the driver’s face appears to turn away. The driver is always responsible for safe and attentive driving. System effectiveness may be affected by articles of clothing worn on the head or face. See Owner’s Manual for complete details on system operation and limitations. 3 EyeSight® is a driver assist technology, which may not operate optimally under all driving conditions. The driver is always responsible for safe and attentive driving. System effectiveness depends on many factors such as vehicle maintenance, weather and road conditions. See Owner’s Manual for complete details on system operation and limitations.



Ventilated front seats



Sport suspension



>Welcome to your element.







OUT TEMP 24 °C 3:03 PM

Accel 0% Angle 0° Calendar 18 FRI

Map Radio Media

Phone Apps MySubaru

Settings Apple CarPlay Car Info

21.0 A/C 22.5

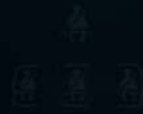
ON/OFF < > A/C



VOLUME



× / HOLD



PASSENGER AIR BAG



TUNE



HOLD





## Connect at any moment. Accommodate for any mood.

Accessing your favourite media whenever you want is essential, and the Legacy makes this feel seamless with a standard 11.6-inch tablet-style infotainment system. SUBARU STARLINK® smartphone integration lets you connect with ease, thanks to standard wireless Apple CarPlay®<sup>1</sup> and Android™ Auto<sup>2</sup>. The Legacy also features both USB-A and USB-C ports to keep your devices charged. Opt for the Harman Kardon®<sup>3</sup> premium audio system to bring your music to life through 12 speakers and a 576-watt-equivalent amplifier.



### Wireless Charging

No untangling required. The wireless charger includes intelligent charging profiles, battery protection, temperature control and short circuit safe guards.



### **DriverFocus®** Distraction Mitigation System

From the moment you sit behind the wheel, available DriverFocus® recognizes you and automatically adjusts the Legacy to your preferences. This includes driver's seat settings, climate controls, side mirrors and even your choices for which vehicle system information appears on the screen.

1 Apple CarPlay® is a registered trademark of Apple Inc.<sup>1</sup> 2 Android™ is a trademark of Google LLC<sup>2</sup>. 3 Harman Kardon® is a registered trademark of Harman International Industries, Inc. 4 The DriverFocus® Distraction Mitigation System is a driver recognition technology designed to alert drivers if their attention to the road wavers or if the driver's face appears to turn away. The driver is always responsible for safe and attentive driving. System effectiveness may be affected by articles of clothing worn on the head or face. See Owner's Manual for complete details on system operation and limitations.

## Let your passion take you far.

### Reliability for miles—and more.

Starting from its core, the Legacy is built for longevity. Subaru Symmetrical Full-Time All-Wheel Drive is the result of decades of Subaru expertise in full-time AWD engineering. The horizontally opposed design of the SUBARU BOXER® engine results in less vibration and wear-and-tear, and the Subaru Global Platform is simply our strongest foundation ever—incredibly durable and built to last.

### Choose your engine.

With its low centre of gravity, the SUBARU BOXER® engine helps to enhance performance and handling. And with the Legacy, you have two options. The direct-injection SUBARU BOXER® engine delivers capable performance with 182 hp. Meanwhile, the Legacy GT trim features a 260-hp direct-injection turbocharged SUBARU BOXER® engine with 277 lb-ft of torque. Either way, you use only the fuel you need, as standard Auto Start Stop can shut off the engine when idling in traffic.







**182 HP**

**Direct-Injection** Boxer Engine

**260 HP**

**Direct-Injection Turbocharged** Boxer Engine





## An extra set of eyes every time you drive.

The Legacy features the latest EyeSight® Driver Assist Technology<sup>1</sup>, a set of systems designed to watch the road ahead, alert you and even intervene if necessary. New innovations include an available wide-angle mono camera<sup>2</sup> providing an enhanced range of visibility to better detect vehicles and pedestrians. Plus, EyeSight® is now equipped with Automatic Emergency Steering, which can help you avoid a collision by providing steering and pre-collision braking support if it determines there's enough space in the lane of travel to intervene.





**Pre-Collision Braking<sup>1</sup>**

Can help slow and bring your Legacy to a full stop if necessary.



**Lane Departure and Sway Warning<sup>1</sup>**

Can alert you if you drift to the edge of your lane and begin to cross into another.



**Adaptive Cruise Control with Lane Centring Assist<sup>1</sup>**

Automatically keeps you centred in your lane, at a safe distance behind the car in front of you—even in traffic and around curves.



**Pre-Collision Throttle Management<sup>1</sup>**

Can reduce your engine power to help give you more time to react and to help minimize the possible impact force and frontal impact damage.



**DriverFocus<sup>®</sup>**  
Distraction Mitigation System

**Creating safer roads by reducing distracted driving.**

Subaru is taking on one of the biggest issues in the automotive industry: distracted driving. The Legacy features an award-winning state-of-the-art safety system that helps reduce distracted driving for both new and experienced drivers. Working with EyeSight<sup>®</sup> Driver Assist Technology<sup>1</sup>, DriverFocus<sup>®3,4</sup> is like having an attentive co-pilot along for the ride, ready to give a helpful alert if a driver becomes distracted or drowsy.

1 EyeSight<sup>®</sup> is a driver assist technology, which may not operate optimally under all driving conditions. The driver is always responsible for safe and attentive driving. System effectiveness depends on many factors such as vehicle maintenance, weather and road conditions. The Pre-Collision Braking System is designed to provide automatic braking that either prevents a collision or reduces the severity of a frontal impact. Pre-Collision Throttle Management is designed to reduce acceleration and minimize the severity of certain frontal impacts. Lane Centring Assist is designed to assist the driver and are not substitutes for safe and attentive driving. Lane centring function operates only when used in conjunction with Adaptive Cruise Control. The Lane Departure and Sway Warning, and Lane Keep Assist operate only when the lane markings are visible, and its effectiveness depends on many factors. See Owner's Manual for complete details on system operation and limitations. 2 GT trim only. 3 The DriverFocus<sup>®</sup> Distraction Mitigation System is a driver recognition technology designed to alert drivers if their attention to the road wavers or if the driver's face appears to turn away. The driver is always responsible for safe and attentive driving. System effectiveness may be affected by articles of clothing worn on the head or face. See Owner's Manual for complete details on system operation and limitation. 4 Availability varies by trim level. See your retailer for details.

**In the stop and go,  
confidence in all directions.**



#### **Blind-Spot Detection**

Using radar sensors, Blind-Spot Detection<sup>2</sup> warns you with a visual indicator on your side mirror if it senses a vehicle in your blind spot. Another feature of this system, Lane Change Assist, alerts you with a flashing indicator on your side mirror if it senses a vehicle approaching at a higher speed in a neighbouring lane and you signal for a lane change.

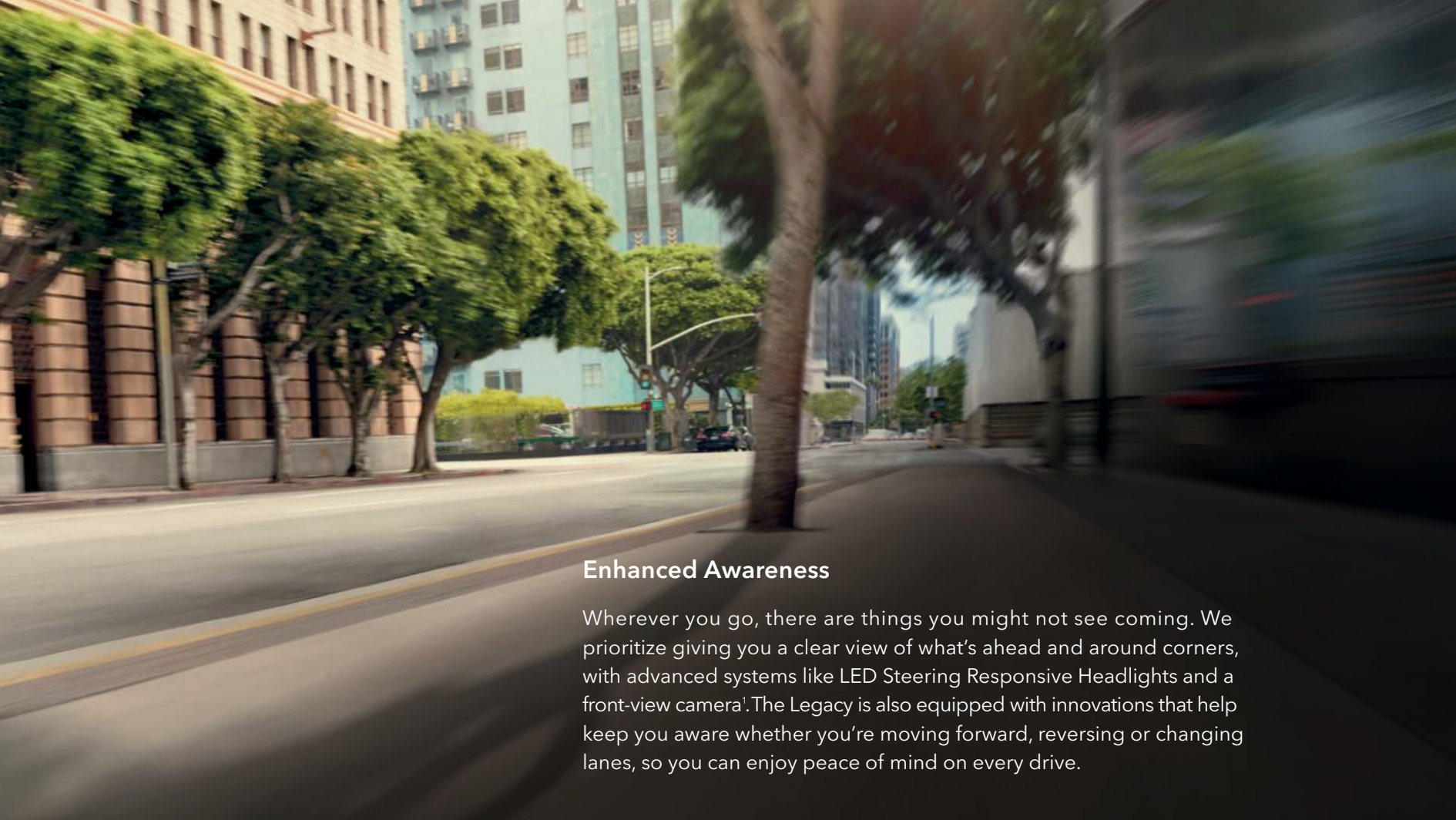


#### **Rear Cross-Traffic Alert**

Rear Cross-Traffic Alert<sup>2</sup> uses radar sensors to help warn you of traffic approaching from the side as you are backing up, utilizing a flashing visual indicator on your side mirror and rearview camera display as well as an audible warning.

1. Availability varies by trim level. See your retailer for details. 2. Blind-Spot Detection, Lane Change Assist and Rear Cross-Traffic Alert are systems designed to assist the driver by monitoring the rear and side areas of the vehicle during a lane change or reversing and are not a substitute for safe and attentive driving. 3. The Reverse Automatic Braking System is not a substitute for safe and attentive driving. System effectiveness depends on many factors, such as vehicle maintenance, weather and road conditions. Always exercise caution, and use vehicle mirrors and the rearview camera when backing up. See Owner's Manual for complete details on system operation and limitations. 4. Activation with subscription required.





## Enhanced Awareness

Wherever you go, there are things you might not see coming. We prioritize giving you a clear view of what's ahead and around corners, with advanced systems like LED Steering Responsive Headlights and a front-view camera<sup>1</sup>. The Legacy is also equipped with innovations that help keep you aware whether you're moving forward, reversing or changing lanes, so you can enjoy peace of mind on every drive.



### Reverse Automatic Braking

Reverse Automatic Braking<sup>3</sup> can detect objects directly behind your vehicle when backing up at a low speed and can help bring the Legacy to a stop should an object be detected within its range and the brakes have yet to be applied. There's also the rearview camera to help you keep an eye out.



### SUBARU STARLINK® Connected Services

The Legacy features next-generation SUBARU STARLINK® Connected Services<sup>4</sup> technology, bringing you added safety, security and convenience. It can alert a first responder in an emergency, help police locate your vehicle if it's stolen and more. And to get you started, new Legacy drivers enjoy a free three-year SUBARU STARLINK® Connected Services trial, which includes Advanced Automatic Collision Notification, Enhanced Roadside Assistance, SOS Emergency Assistance and customizable vehicle alerts. It's control when you want it, and help when you need it.

# 2023 Legacy | Features & Dimensions

Standard 11.6" tablet-style infotainment system



Genuine Nappa Leather<sup>1</sup>



Standard Steering Responsive Headlights



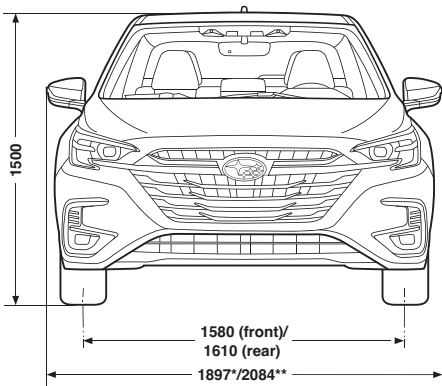
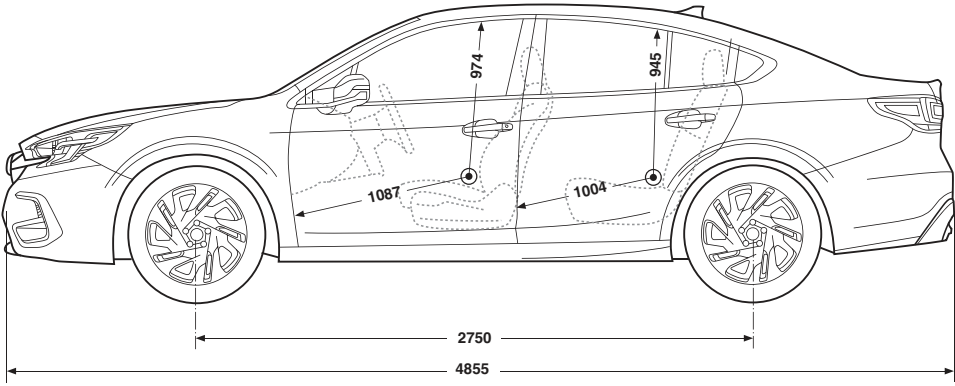
Standard SUBARU STARLINK<sup>®</sup> Connected Services with Remote Engine Start with Climate Control<sup>2</sup>



Harman Kardon<sup>®</sup> 576-watt premium audio system with 12 speakers<sup>3,4</sup>



Standard EyeSight<sup>®</sup> Driver Assist Technology<sup>5</sup> with available wide-angle mono camera<sup>1</sup>



Measurements in millimetres  
\* With mirrors folded.  
\*\* With mirrors extended.

For a detailed list of specifications, features, accessories and model comparisons, please visit [Subaru.ca](http://Subaru.ca) or your nearest authorized Subaru Retailer.

1 GT trim only. 2 Requires Keyless Access with Push-Button Start and subscription to SUBARU STARLINK<sup>®</sup> Connected Services. Activation with subscription required. 3-year subscription included. See your retailer for details. 3 Limited and GT trims only. 4 Harman Kardon<sup>®</sup> is a registered trademark of Harman International Industries, Inc. 5 EyeSight<sup>®</sup> is a driver assist technology, which may not operate optimally under all driving conditions. The driver is always responsible for safe and attentive driving. System effectiveness depends on many factors such as vehicle maintenance, weather and road conditions. See Owner's Manual for complete details on system operation and limitations. 6 Apple CarPlay<sup>®</sup> is a registered trademark of Apple Inc.<sup>1</sup> 7 Android<sup>™</sup> is a trademark of Google LLC<sup>1</sup>. 8 Bluetooth<sup>®</sup> is a registered trademark of Bluetooth SIG, Inc., America. 9 Activation and required monthly subscription sold separately. Includes 3-month trial subscription. See your retailer for details. SiriusXM<sup>®</sup>, Travel Link<sup>®</sup> and the SiriusXM logo, channel names and logos are trademarks of Sirius XM Radio Inc. and are used under licence by Sirius XM Canada Inc. Subscriptions to SiriusXM Canada are subject to the SiriusXM Canada Customer Agreement and other terms and conditions. 10 HomeLink<sup>®</sup> is a registered trademark of Gentex Corporation. 11 Activation with subscription required. 12 Blind-Spot Detection, Lane Change Assist and Rear Cross-Traffic Alert are systems designed to assist the driver by monitoring the rear and side areas of the vehicle during a lane change or reversing and are not a substitute for safe and attentive driving. 13 The Reverse Automatic Braking System is not a substitute for safe and attentive driving. System effectiveness depends on many factors, such as vehicle maintenance, weather and road conditions. Always exercise caution, and use vehicle mirrors and the rearview camera when backing up. See Owner's Manual for complete details on system operation and limitations. 14 The DriverFocus<sup>®</sup> Distraction Mitigation System is a driver recognition technology designed to alert drivers if their attention to the road wavers or if the driver's face appears to turn away. The driver is always responsible for safe and attentive driving. System effectiveness may be affected by articles of clothing worn on the head or face. See Owner's Manual for complete details on system operation and limitations.





## Touring

- 182-hp 2.5-litre 4-cylinder SUBARU BOXER® engine with direct injection
- Auto Start Stop
- EyeSight® Driver Assist Technology<sup>5</sup>
- Subaru Symmetrical Full-Time All-Wheel Drive
- Lineartronic® CVT (Continuously Variable Transmission) with Active Torque Vectoring
- LED Steering Responsive Headlights with High Beam Assist
- 17-inch aluminum-alloy wheels
- LED foglights
- Heated body-colour auto-dimming side mirrors with approach lighting
- Power tilting and sliding glass sunroof
- 11.6-inch tablet-style infotainment system with high-resolution touchscreen display, AM/FM/MP3/WMA audio system with wireless Apple CarPlay® and Android™ Auto<sup>7</sup> functionality, USB-A and USB-C port controls, auxiliary audio input, steering wheel-integrated controls, Bluetooth® mobile phone connectivity with voice activation and Bluetooth® streaming audio, and SiriusXM® and SiriusXM® Travel Link®<sup>9</sup>
- Auto-dimming rearview compass mirror with HomeLink®<sup>10</sup>
- Windshield wiper de-icer
- Auto-up/down front and rear windows
- Cloth upholstery
- 10-way power-adjustable driver seat with lumbar support and 4-way manually adjustable front-passenger seat
- Heated front seats
- Leather-wrapped steering wheel and shifter handle
- Full circumference heated steering wheel
- Centre console rear vents and USB-A and USB-C charge ports
- Dual-zone automatic climate control with synchronization
- Welcome lighting
- Proximity key with Push-Button Start
- SUBARU STARLINK® Connected Services<sup>11</sup> (free 3-year trial subscription included)
- Subaru Side/Rear Vehicle Detection (SRVD) system with Blind-Spot Detection and Rear Cross-Traffic Alert<sup>12</sup>
- Reverse Automatic Braking<sup>13</sup>
- Wireless phone charger
- Rearview camera with dynamic guide lines
- Rear seatbelt reminder



## Limited

### Includes Touring key features and adds:

- DriverFocus® Distraction Mitigation System<sup>14</sup>
- 18-inch aluminum-alloy wheels
- Leather-trimmed upholstery
- 12-way power-adjustable driver seat with 4-way lumbar support
- 8-way power-adjustable front-passenger seat
- Adjustable driver seat thigh support
- Two-position memory driver seat and side mirrors
- Heated rear seats
- 11.6-inch tablet-style infotainment system with high-resolution touchscreen display, GPS navigation, AM/FM/MP3/WMA audio system with wireless Apple CarPlay® and Android™ Auto<sup>7</sup> functionality, USB-A and USB-C port controls, auxiliary audio input, steering wheel-integrated controls, Bluetooth® mobile phone connectivity with voice activation and Bluetooth® streaming audio, and SiriusXM® Traffic®<sup>9</sup> and SiriusXM® Travel Link®<sup>9</sup>
- 12-speaker, 576-watt-equivalent Harman Kardon®<sup>4</sup> audio system



## GT

### Includes Limited key features and adds:

- 260-hp 2.4-litre 4-cylinder Direct-Injection Turbocharged (DIT) SUBARU BOXER® engine with high-torque Lineartronic® CVT (Continuously Variable Transmission) and dual chrome exhaust tip
- SI-Drive
- Sport-tuned suspension and steering
- Gunmetal painted alloy wheels
- Front grille with red accent
- Dark grey painted power folding side mirrors and roof antenna
- Exclusive GT badging
- Exclusive GT floor mats
- EyeSight® Driver Assist Technology<sup>5</sup> with wide-angle mono camera
- Front-view camera
- Alloy sport pedals
- Black Nappa Leather-trimmed upholstery
- High-grade leather-wrapped steering wheel
- Ventilated front seats
- Centre console-mounted single-disc CD player

# 2023 Legacy | Colours

## Exterior Colours



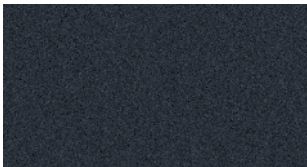
Crystal White Pearl



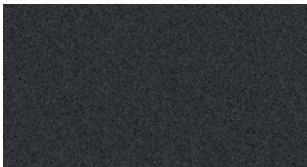
Ice Silver Metallic



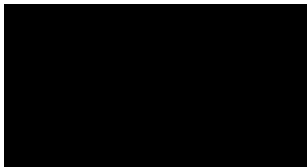
Brilliant Bronze Metallic



Cosmic Blue Pearl



Magnetite Grey Metallic



Crystal Black Silica

## Seat Material



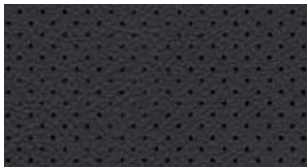
Black Cloth (BC)



Black Leather (BL)



Platinum Leather (PL)



Black Nappa Leather (BNL)

Colour Combinations	Touring	Limited	GT
Crystal White Pearl	BC	BL	BNL
Ice Silver Metallic	BC	BL	BNL
Brilliant Bronze Metallic	BC	BL	–
Cosmic Blue Pearl	BC	BL or PL	BNL
Magnetite Grey Metallic	BC	BL	BNL
Crystal Black Silica	BC	BL	BNL





## Subaru Warranties

Every Subaru vehicle is designed and built to offer our customers the highest possible level of quality and reliability. We are proud of our vehicles and proud to stand behind them with a comprehensive warranty. For 2023 model-year vehicles, the warranty on all Subaru vehicles consists of the following:

**New Vehicle Limited Warranty (36 month/60,000 km)** – Covers basic and major components for 36 months or 60,000 km.

**Major Component Limited Warranty (60 month/100,000 km)** – Extends coverage of major components (more than just powertrain) up to 60 months or 100,000 km.

**Surface Corrosion Limited Warranty (36 month/60,000 km)** – Covers surface corrosion to visible painted body panels for 36 months or 60,000 km.

**Anti-Perforation Limited Warranty (60 month/unlimited km)** – Covers perforation due to corrosion to body sheet metal panels for 60 months, regardless of kilometres.

**Emission Control System Limited Warranty** – Covers some emissions components for 36 months or 60,000 km and the major parts of the emission control system for 96 months or 130,000 km.

**Parts and Accessories Limited Warranty** – Covers Subaru parts and accessories installed by the retailer prior to retail delivery of the vehicle for 36 months or 60,000 km, and Subaru parts and accessories installed by the retailer after the retail delivery of the vehicle for 12 months or 20,000 km from the date of the installation.

The above information is an overview of warranty coverage and is not a warranty statement. If you wish to see more details regarding Subaru warranties, please refer to your Subaru warranty booklet, contact your local retailer or visit our Web site at [subaru.ca](http://subaru.ca).

## Subaru 360 C.A.R.E. Program (36 months/unlimited km)

Access to dedicated Subaru 360 C.A.R.E. (Customer Assistance for Roadside Emergencies) Roadside Assistance Services, which includes access to 1,000 CAA and AAA offices throughout Canada and the United States. In addition to towing, coverage also includes Fuel Delivery, Battery Boost, Flat Tire Service, Lock-Out Service, Trip Accident & Mechanical Breakdown Assistance Service, Winching and Extrication Service, Personalized Trip Planning and Routing, Theft and Hit-and-Run Reward, and Arrest Bond Certificate.

The above information is an overview of services. If you wish to see more details regarding Subaru 360 C.A.R.E., please visit our Web site at [subaru.ca](http://subaru.ca).

## Subaru Protection Plan

As a Subaru owner, you have expectations for a pleasurable, trouble-free ownership experience – now and into the future. Once your 36-month/60,000-km New Vehicle Limited Warranty period ends<sup>1</sup>, our Subaru Protection Plan (SPP) – the only vehicle service contract endorsed by Subaru Canada for Subaru vehicles – can prolong your hassle-free ownership experience with three levels of extended service contract coverage tailored to your needs: Powertrain Protection; Major Protection; or Complete Protection (best level of coverage to complement the 60-month/100,000-km Major Component Limited Warranty). SPP offers comprehensive mechanical and electrical coverage and a number of additional features and benefits, such as Roadside Assistance and Alternate Transportation, for up to 7 years or 160,000 kilometres from your vehicle's in-service date. Whether your vehicle is purchased or leased, SPP protects you and your investment. Be sure to ask your retailer for details or visit [subaru.ca](http://subaru.ca).

<sup>1</sup> If you already own a Subaru vehicle and it is still within the 36-month/60,000-km New Vehicle Limited Warranty period, you are still eligible for SPP.

Subaru vehicles are uniquely designed to get out there more and to leave less behind. We build our vehicles for maximum longevity, because more time spent on the road equals less time spent in junkyards and landfills. In fact, 97.4% of our vehicles sold in Canada over the last 10 years are still on the road today<sup>1</sup>. You'll also find very little waste created in the production of a Subaru. Many of our vehicles are built in the Subaru of Indiana Automotive, Inc., (SIA) factory, which was the first manufacturing facility in the U.S. to achieve zero-landfill status. Other Subaru facilities around the world now achieve similar goals in helping to preserve the environment. Respect for our surroundings is yet another way that Subaru vehicles help to build driver confidence for the road ahead.

<sup>1</sup> Based on IHS Markit Vehicles in Operation as of June 30, 2021, for Model Years 2012 to 2021 vs. Total New Registrations of those vehicles.



**For a detailed list of specifications, features, accessories and model comparisons, please visit [Subaru.ca](http://Subaru.ca) or your nearest authorized Subaru Retailer.**

The Supplemental Restraint System (SRS airbags) affords the driver and passenger additional protection in some collisions. This system provides supplemental protection only, and seatbelts must be worn in order to avoid injuries to out-of-position occupants upon airbag deployment. The combination of SRS and seatbelts provides the best protection in a serious accident. All illustrations, specifications, features and photographs contained in this brochure are based on product information available at the time of its printing and may not be completely accurate following its publication. Colours shown may vary due to reproduction variations in the printing process, and some vehicle parts cannot be shown in certain photographs. Subaru Canada, Inc. reserves the right to discontinue or make changes at any time, without notice or incurring obligations, to colours, materials, equipment, accessories, features, specifications and models, or to change their prices. Some models shown may be from international markets and are not available in Canada; may be shown with equipment or accessories that are optional (at extra cost) or available only in certain combinations; or may be subject to product delays or not be available in Canada. Please visit [subaru.ca](http://subaru.ca) for the latest information and specifications. For complete details on product updates and warranties, please contact your Subaru retailer. Ascent, BRZ, Crosstrek, Forester, Impreza, Legacy, Outback, Solterra, WRX, STI, DriverFocus, EyeSight, Lineartronic, X-MODE, STARLINK, Subaru and SUBARU BOXER are registered trademarks of SUBARU CORPORATION. Android™ is a trademark of Google LLC. Apple CarPlay® is a registered trademark of Apple Inc. Bluetooth® is a registered trademark of Bluetooth SIG, Inc., America. Harman Kardon® is a registered trademark of Harman International Industries, Inc. HomeLink® is a registered trademark of Gentex Corporation. SiriusXM®, Travel Link® and the SiriusXM logo, channel names and logos are trademarks of Sirius XM Radio Inc. and are used under licence by Sirius XM Canada Inc. Subscriptions to SiriusXM Canada are subject to the SiriusXM Canada Customer Agreement and other terms and conditions.

† Ability of this product to access connected content is subject to change without notice and could be affected by any of the following: compatibility issues with future firmware versions of the smartphone; compatibility issues with future versions of the connected content application(s) for the smartphone; changes to or discontinuation of the connected content application(s) or service by its provider. Printed in Canada. © 2022 Subaru Canada, Inc. 2023 model year.



Environmental Management System  
(EMS) ISO 14001:2015 certified by SGS

This brochure was printed on certified paper and contains recycled fibre. It is chlorine-free, recyclable and biodegradable. It was produced using a "Green Printing Process" which includes vegetable-based inks that make this brochure fully recyclable leaving no harmful residue. Please recycle.



PROCESS CERTIFIED FOR REDUCED  
ENVIRONMENTAL IMPACT. VIEW  
SPECIFIC ATTRIBUTES EVALUATED  
UL COMFOL  
UL 2801

[subaru.ca](http://subaru.ca)

**SUBARU CANADA, INC.**

560 Suffolk Court, Mississauga, ON, L5R 4J7