



SUBARU

BRZ



## **Rediscover rubber and road.**

Driving should feel like driving. It's a simple, undeniable idea that gets right at the heart of the all-new BRZ, a hyper-focused, thrillingly pure sports car—now with more power, more torque and quicker acceleration. You're the driver, and the BRZ won't let you forget it.







## Engineered to be driven.

The BRZ delivers enjoyment at any speed. That's because it was engineered to feel responsive, precise and balanced.



### Track-tested Suspension

Performance driving depends on a well-tuned suspension. The 2022 BRZ has been dialed in even further with spring rates, dampers, and stabilisers optimized to keep you in control during quick manoeuvres.



### All-new Engine

Making the all-new BRZ even quicker out of the corners is a redesigned SUBARU BOXER® engine with 228 hp. It also boasts 184 lb-ft of torque—a 18% increase for 2022—now delivered sooner and across a wider rev range.



### Two Ways to Shift

Get fully engaged with a close-ratio, 6-speed manual transmission with superb shift feel. You can also opt for the redesigned six-speed automatic with paddle shifters and rev matching to enhance that feeling of control from shifting.<sup>1</sup>



### TORSEN®<sup>2</sup> Limited-slip Differential

With the same type of advanced TORSEN® limited-slip differential (LSD) as the high-performance WRX STI, the BRZ's LSD assures control in high-speed turns and greater confidence for spirited driving.

<sup>1</sup> Automatic transmission models only.

<sup>2</sup> TORSEN® is a registered trademark of JTEKT Corporation.



## **Cockpit, not interior.**

Performance driving is about the driver, and that's why every detail inside the BRZ has been carefully considered. Low-mounted performance-design front seats keep you centred and in place, while the perfectly placed pedals, shifter and leather-wrapped steering wheel let you make your manoeuvres decisively.



1 Ultrasuede® is a registered trademark of Toray Industries, Inc. Availability varies by trim level. See your retailer for details.



### Performance-design Seats

When you're deep in the corners, you'll be glad that the BRZ comes standard with supportive front seats with deep bolsters and available Ultrasuede® inserts,<sup>1</sup> which provide extra grip to help keep you in the pocket.





## Connect to your world.

For easy access to music and apps, the BRZ features a new 8-inch touchscreen<sup>2</sup> infotainment system with Apple CarPlay<sup>®3,4</sup> and Android<sup>™</sup> Auto<sup>3,5</sup> integration. And thanks to Remote Engine Start with Climate Control,<sup>6,7</sup> you can set the perfect temperature even before you get in.

## The centre of connection.

Driver-centric ergonomics personalize every drive. With a steering wheel that fits comfortably in your palms and a conveniently placed shift lever, you can take control of the Subaru BRZ with intuitive fluidity. With a customizable digital instrument cluster featuring Sport,<sup>1</sup> Snow<sup>1</sup> and Track mode displays, along with a host of other customizable information, you can dial in your drive with only the information you want to see.



<sup>1</sup> Requires automatic transmission. See your retailer for details. <sup>2</sup> Driver is always responsible for safe and attentive driving. Please refrain from operating the touchscreen while driving. <sup>3</sup> Compatible smartphone and applications required. Data provided by smartphone is displayed on the audio system screen. Some provinces prohibit the operation of handheld electronic devices while operating a vehicle. Smartphone apps should only be launched when vehicle is safely parked. Your wireless carrier's rates may apply. <sup>4</sup> Apple CarPlay<sup>®</sup> is a registered trademark of Apple Inc.<sup>1</sup> <sup>5</sup> Android<sup>™</sup> is a trademark of Google LLC.<sup>1</sup> <sup>6</sup> Availability varies by trim level. See your retailer for details. <sup>7</sup> Requires automatic transmission and subscription to SUBARU STARLINK<sup>®</sup> Connected Services. 3-year free trial included. See your retailer for details.




## Fresh styling is just the beginning.

The reimagined exterior design of the 2022 BRZ isn't just for looks. Purpose is all around, from its light 17- or 18-inch alloy wheels<sup>1</sup> to its side rocker spoilers and integrated ducktail rear spoiler. Side, front and rear vents are all functional and designed to improve airflow.





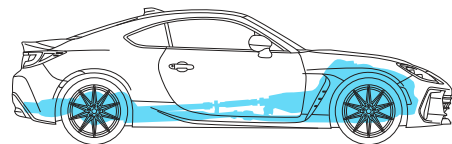


**Suddenly you realize all your  
kitchen knives are dull.**



## Subaru Core Technology

From its original conception, the BRZ was engineered as a symbol of sports car purity. Uniquely low and compact, the reliable SUBARU BOXER® engine was chosen as the foundation. From there, the ideal sports coupe would come to fruition—one with a lightweight, balanced chassis and a component few driving purists would live without: rear-wheel drive.



### Aerodynamics

The revised exterior of the BRZ is designed to reduce drag with functional designs, from its vented front bumper, rear bumper and fenders to its integrated ducktail rear spoiler.

### Sports Car Drivetrain

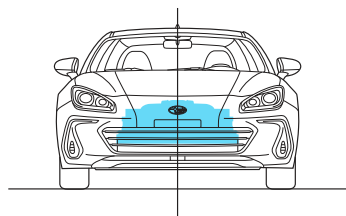
Laid out symmetrically, the SUBARU BOXER® engine puts the crankshaft perfectly in line with the driveshaft for tremendous stability and dynamic agility. Plus, the rear-wheel drive configuration allowed us to move the engine farther back to give you precise control over your cornering attitude. We combined this agile platform with a quick-ratio steering system that's tuned to react with astounding precision and immediacy to your input.



**Floor it,  
and it will floor you.**

#### **More Usable Power**

Engage the six-speed transmission, and push it. Rev it. Smile. At any rpm, power is delivered smoothly and efficiently, thanks to the SUBARU BOXER® engine's balanced design with horizontally opposed pistons.

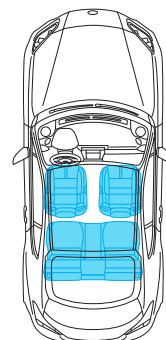


#### **The Classic SUBARU BOXER® Engine**

The heart and soul of the BRZ is an all-new 2.4-litre SUBARU BOXER® engine with 228 hp and 184 lb-ft of torque. Designed to be light, low and stable, the BOXER® engine has been optimized to deliver power and torque even quicker and over a wider rev range.

#### **Ultra-low Centre of Gravity**

From the roofline to the seating position to the SUBARU BOXER® engine, every element of the 2022 BRZ is placed as low as possible. This helps create an even lower centre of gravity of just 456 mm.



#### **Performance Suspension**

A retuned, fully independent suspension brings out every bit of agility and responsiveness the all-new Subaru BRZ has to offer. MacPherson-type front struts help maximize rigidity and a feeling of direct control by allowing the SUBARU BOXER® engine to be placed even lower in the chassis. And a double-wishbone rear design soaks up bumps without sacrificing control.

## An extra set of eyes every time you drive.

This is the first time the BRZ has offered EyeSight® Driver Assist Technology,<sup>1,2</sup> a suite of systems designed to watch the road ahead, alert you and even intervene to help avoid a collision.



### Pre-Collision Braking<sup>1,2</sup>

A driver ahead unexpectedly hits the brakes or cuts you off. EyeSight® warns you, applies brakes and, at lower speeds, can even help you stop your BRZ.



### Lane Departure and Sway Warning<sup>1,2</sup>

Can alert you if you drift to the edge of your lane and begin to cross into another.



### Adaptive Cruise Control<sup>1,2</sup>

Traffic doesn't always flow smoothly. EyeSight® can keep a set speed, look ahead and help your BRZ automatically adjust to keep your distance.



### Pre-Collision Throttle Management<sup>1,2</sup>

Can reduce your engine power to help give you more time to react and to help minimize the possible impact force and frontal impact damage.

### Lightweight Body

Simplicity in design and extensive use of high-tensile steel has helped keep the weight low while making the chassis more rigid and precise. The BRZ now incorporates more aluminum into its design. Utilizing an aluminum hood, front fenders and roof panel helps allow for structural safety improvements, while reducing weight and bringing the centre of gravity even lower.

### Hill Start Assist

Say goodbye to the “handbrake hill-start.” To help you avoid rolling downhill when starting from a stop on steep hills or slopes, Hill Start Assist temporarily holds the car steady when the driver releases the brake pedal to press the accelerator pedal.

### Rearview Camera

The BRZ features a standard Rearview Camera with dynamic guide lines that gives you a clearer view of the area behind your vehicle for extra visibility when you need it.

### Ring-shaped Reinforcement Frame

The Subau BRZ offers intense control, and its protection is just as intense. Its frame design strengthens the passenger cabin from the roof to the doors, pillars and floor. This design, bolstered by generous use of high-tensile steel, helps to dissipate impact energy away from the occupants in a collision.

### SRS<sup>3</sup> Airbags

Heightened control and visibility are elemental to the Subaru BRZ. However, you'll also have the confidence of knowing that, should something unfortunate happen, you have front, front-side and curtain SRS<sup>3</sup> airbags, along with a new driver's knee SRS<sup>3</sup> airbag as standard equipment to help protect you from an impact.

### Vehicle Stability Control

This advanced electronic system monitors an array of sensors—including braking, steering and yaw sensors—to help keep you from losing control as you push the Subaru BRZ to its limits.

## Peace of mind and performance coexist.

The all-new BRZ now offers a wider range of available safety innovations, including LED Steering Responsive Headlights<sup>4</sup> with High Beam Assist,<sup>1</sup> SUBARU STARLINK<sup>®</sup> Safety and Security,<sup>4,5</sup> Blind-Spot Detection,<sup>4,6</sup> and Rear Cross-Traffic Alert.<sup>4,6</sup>



1 Requires automatic transmission. See your retailer for details. 2 EyeSight<sup>®</sup> is a driver assist technology, which may not operate optimally under all driving conditions. The driver is always responsible for safe and attentive driving. System effectiveness depends on many factors such as vehicle maintenance, weather and road conditions. The Pre-Collision Braking System is designed to provide automatic braking that either prevents a collision or reduces the severity of a frontal impact. The Pre-Collision Throttle Management System is designed to reduce acceleration and minimize the severity of certain frontal impacts. Adaptive Cruise Control is designed to assist the driver and is not a substitute for safe and attentive driving. Lane Departure and Sway Warning operate only when the lane markings are visible, and system effectiveness depends on many factors. See Owner's Manual for complete details on system operation and limitations. 3 SRS: Supplemental Restraint System. Effective when used in conjunction with seatbelts. 4 Availability varies by trim level. See your retailer for details. 5 Activation with subscription required. 6 Blind-Spot Detection, Lane Change Assist and Rear Cross-Traffic Alert are systems designed to assist the driver by monitoring the rear and side areas of the vehicle during a lane change or reversing and are not a substitute for safe and attentive driving.

# 2022 BRZ | Features & Dimensions

7.0-inch customizable digital gauge cluster



Michelin®1 Pilot®1 Sport 4 Tires²



LED Headlights



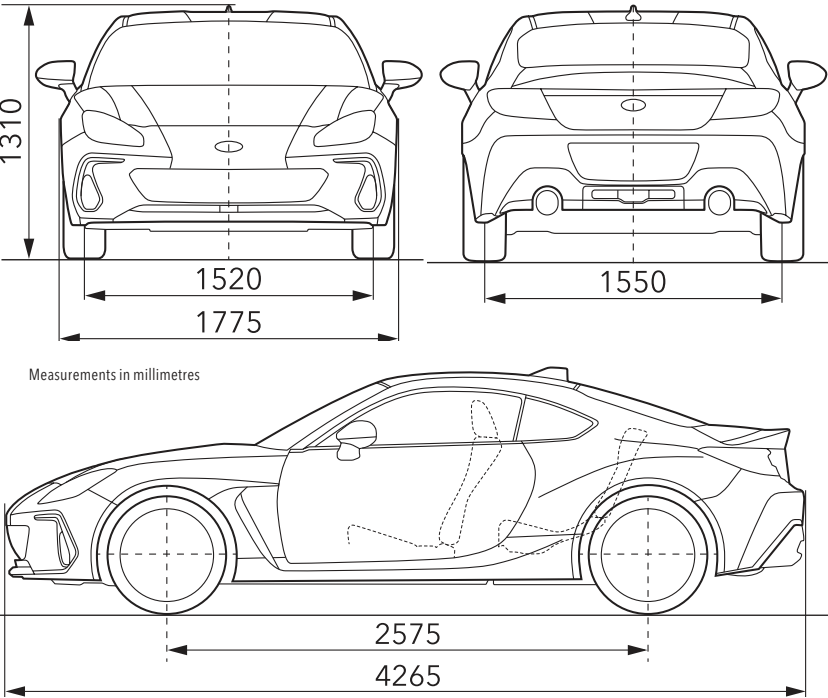
Dual-zone Automatic Climate Control



8.0-inch Infotainment System with Apple CarPlay®³ and Android™ Auto⁴



Heated Front Seats²



- Steering

**BRZ & BRZ Sport-tech**  
 Electric power-assisted quick ratio rack-and-pinion.  
 Ratio: 13.5:1. Turning radius: 5.4 metres curb-to-curb.
- Brakes

**BRZ & BRZ Sport-tech**  
 4-wheel disc, ventilated front and rear. 4-channel, dual-piston front and single-piston rear calipers. 4-sensor ABS with Electronic Brake-force Distribution (EBD).
- Wheels

**BRZ**  
 17 x 7.5-inch 10-spoke aluminum-alloy.  
 High-luster grey with machine finish.

**BRZ Sport-tech**  
 18 x 7.5-inch 10-spoke aluminum-alloy.  
 Dark grey matte finish.
- Tires

**BRZ**  
 215/45 R17 Michelin®¹ high-performance summer tires.

**BRZ Sport-tech**  
 215/40 R18 Michelin®¹ Pilot®¹ Sport 4 ultra-high performance summer tires.



## BRZ

- 228-hp 2.4-litre 4-cylinder SUBARU BOXER® engine with direct and port fuel injection
- Close-ratio 6-speed manual transmission
- Sport-tuned suspension, 4-wheel, fully independent suspension
- Multi-spoke 17-inch aluminum-alloy wheels
- Auto-on/off LED headlights and taillights
- Functional front bumper, fender and rear bumper vents
- Integrated front bumper underspoiler
- Side rocker spoilers
- Integrated ducktail rear spoiler
- Cloth upholstery
- Leather-wrapped steering wheel with audio system, Bluetooth®,<sup>5</sup> meter display and cruise control buttons
- 7.0-inch customizable digital gauge cluster with Normal, Sport,<sup>6</sup> Snow<sup>6</sup> and Track modes, digital speedometer, tachometer, coolant temperature and fuel level displays, G-force meter and lap time displays and other vehicle functions
- Auto-up/down power windows
- Electronic cruise control
- Rearview Camera
- Proximity key with Push-Button Start
- Anti-theft security system
- 8.0-inch infotainment system with high-resolution touchscreen display, AM/FM audio system with Apple CarPlay®<sup>3</sup> and Android™<sup>4</sup> Auto<sup>4</sup> functionality, 6 speakers, dual USB input ports, auxiliary audio input, steering wheel-integrated controls, SMS text messaging capability, Bluetooth®<sup>5</sup> mobile phone connectivity with voice activation and Bluetooth®<sup>5</sup> streaming audio, and SiriusXM® Satellite Radio<sup>7</sup> and Travel Link®<sup>7</sup>
- Carpeted floor mats with embroidered BRZ logo and red stitching
- BRZ with EyeSight®: Includes EyeSight® Driver Assist Technology,<sup>8</sup> 6-speed automatic transmission with manual-mode paddle shifters and rev-matching downshift control and High Beam Assist



## BRZ Sport-tech

### Includes BRZ key features and adds/upgrades:

- 18-inch aluminum-alloy wheels with Michelin®<sup>1</sup> Pilot®<sup>1</sup> Sport 4 ultra-high performance summer tires
- LED Steering Responsive Headlights
- Ultrasuede®<sup>10</sup> and leather-trimmed upholstery
- Aluminum-alloy sill cover inserts
- Brin Naub®<sup>11</sup> Microsuede instrument cluster meter visor and door panel accents
- 8 speakers with 2-channel amplifier
- Dual-mode heated front seats
- SUBARU STARLINK® Connected Services<sup>12</sup> (free 3-year trial subscription included)
- Subaru Side/Rear Vehicle Detection (SRVD) system with Blind-Spot Detection and Rear Cross-Traffic Alert<sup>13</sup>
- Sport-tech with EyeSight®: Includes EyeSight® Driver Assist Technology,<sup>8</sup> 6-speed automatic transmission with manual-mode paddle shifters and rev-matching downshift control, High Beam Assist and Reverse Automatic Braking<sup>9</sup>

For a detailed list of specifications, features, accessories, and model comparisons, please visit [Subaru.ca](https://www.subaru.ca) or your nearest authorized Subaru Retailer.

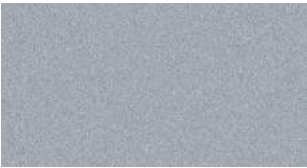
1 Michelin® and Pilot® are registered trademarks of Michelin North America Inc. 2 Standard on Sport-tech trims. 3 Apple CarPlay® is a registered trademark of Apple Inc. 4 Android™ is a trademark of Google LLC. 5 Bluetooth® is a registered trademark of Bluetooth SIG, Inc., America. 6 Requires automatic transmission. 7 Activation and required monthly subscription sold separately. Includes 3-month trial subscription. See your retailer for details. SiriusXM®, Travel Link®, and the SiriusXM logo, channel names and logos are trademarks of Sirius XM Radio Inc. and are used under licence by Sirius XM Canada Inc. Subscriptions to SiriusXM Canada are subject to the SiriusXM Canada Customer Agreement and other terms and conditions. 8 EyeSight® is a driver assist technology, which may not operate optimally under all driving conditions. The driver is always responsible for safe and attentive driving. System effectiveness depends on many factors such as vehicle maintenance, weather and road conditions. The Pre-Collision Braking System is designed to provide automatic braking that either prevents a collision or reduces the severity of a frontal impact. The Pre-Collision Throttle Management System is designed to reduce acceleration and minimize the severity of certain frontal impacts. Adaptive Cruise Control is designed to assist the driver and is not a substitute for safe and attentive driving. The Lane Departure and Sway Warning and Lane Keep Assist operate only when the lane markings are visible, and system effectiveness depends on many factors. See Owner's Manual for complete details on system operation and limitations. 9 The Reverse Automatic Braking System is not a substitute for safe and attentive driving. System effectiveness depends on many factors, such as vehicle maintenance, weather and road conditions. Always exercise caution, and use vehicle mirrors and the rearview camera when backing up. See Owner's Manual for complete details on system operation and limitations. 10 Ultrasuede® is a registered trademark of Toray Industries, Inc. 11 BRIN NAUB® is a registered trademark of TB Kawashima Co., Ltd. 12 Activation with subscription required. 13 Blind-Spot Detection, Lane Change Assist and Rear Cross-Traffic Alert are systems designed to assist the driver by monitoring the rear and side areas of the vehicle during a lane change or reversing and are not a substitute for safe and attentive driving.

2022 BRZ | Colours

Exterior  
Colours



Crystal White Pearl



Ice Silver Metallic



World Rally Blue Pearl



Ignition Red



Magnetite Grey Metallic



Crystal Black Silica

Seat  
Material



Black Cloth (BC)



Black Leather / Ultrasuede® (BL)

Colour Combinations	BRZ	BRZ Sport-tech
Crystal White Pearl	BC	BL
Ice Silver Metallic	BC	BL
World Rally Blue Pearl	BC	BL
Ignition Red	BC	BL
Magnetite Grey Metallic	BC	BL
Crystal Black Silica	BC	BL



## Subaru Warranties

Every Subaru vehicle is designed and built to offer our customers the highest possible level of quality and reliability. We are proud of our vehicles and proud to stand behind them with a comprehensive warranty. For 2022 model-year vehicles, the warranty on all Subaru vehicles consists of the following:

**New Vehicle Limited Warranty (36 month/60,000 km)** – Covers basic and major components for 36 months or 60,000 km.

**Major Component Limited Warranty (60 month/100,000 km)** – Extends coverage of major components (more than just powertrain) up to 60 months or 100,000 km.

**Surface Corrosion Limited Warranty (36 month/60,000 km)** – Covers surface corrosion to visible painted body panels for 36 months or 60,000 km.

**Anti-Perforation Limited Warranty (60 month/unlimited km)** – Covers perforation due to corrosion to body sheet metal panels for 60 months, regardless of kilometres.

**Emission Control System Limited Warranty** – Covers some emissions components for 36 months or 60,000 km and the major parts of the emission control system for 96 months or 130,000 km.

**Parts and Accessories Limited Warranty** – Covers Subaru parts and accessories installed by the retailer prior to retail delivery of the vehicle for 36 months or 60,000 km, and Subaru parts and accessories installed by the retailer after the retail delivery of the vehicle for 12 months or 20,000 km from the date of the installation.

The above information is an overview of warranty coverage and is not a warranty statement. If you wish to see more details regarding Subaru warranties, please refer to your Subaru warranty booklet, contact your local retailer or visit our Web site at [subaru.ca](http://subaru.ca).

## Subaru 360 C.A.R.E. Program (36 months/unlimited km)

Access to dedicated Subaru 360 C.A.R.E. (Customer Assistance for Roadside Emergencies) Roadside Assistance Services, which includes access to 1,000 CAA and AAA offices throughout Canada and the United States. In addition to towing, coverage also includes Fuel Delivery, Battery Boost, Flat Tire Service, Lock-Out Service, Trip Accident & Mechanical Breakdown Assistance Service, Winching and Extrication Service, Personalized Trip Planning and Routing, Theft and Hit-and-Run Reward, and Arrest Bond Certificate.

The above information is an overview of services. If you wish to see more details regarding Subaru 360 C.A.R.E., please visit our Web site at [subaru.ca](http://subaru.ca).

## Subaru Protection Plan

As a Subaru owner, you have expectations for a pleasurable, trouble-free ownership experience – now and into the future. Once your 36-month/60,000-km New Vehicle Limited Warranty period ends,<sup>1</sup> our Subaru Protection Plan (SPP) – the only vehicle service contract endorsed by Subaru Canada for Subaru vehicles – can prolong your hassle-free ownership experience with three levels of extended service contract coverage tailored to your needs: Powertrain Protection; Major Protection; or Complete Protection (best level of coverage to complement the 60-month/100,000-km Major Component Limited Warranty). SPP offers comprehensive mechanical and electrical coverage and a number of additional features and benefits, such as Roadside Assistance and Alternate Transportation, for up to 7 years or 160,000 kilometres from your vehicle's in-service date. Whether your vehicle is purchased or leased, SPP protects you and your investment. Be sure to ask your retailer for details or visit [subaru.ca](http://subaru.ca).

<sup>1</sup> If you already own a Subaru vehicle and it is still within the 36-month/60,000-km New Vehicle Limited Warranty period, you are still eligible for SPP.

Subaru vehicles are uniquely designed to get out there more and to leave less behind. We build our vehicles for maximum longevity, because more time spent on the road equals less time spent in junkyards and landfills. In fact, 97.4% of our vehicles sold in Canada over the last 10 years are still on the road today.<sup>1</sup> You'll also find very little waste created in the production of a Subaru. Many of our vehicles are built in the Subaru of Indiana Automotive, Inc., (SIA) factory, which was the first manufacturing facility in the U.S. to achieve zero-landfill status. Other Subaru facilities around the world now achieve similar goals in helping to preserve the environment. Respect for our surroundings is yet another way that Subaru vehicles help to build driver confidence for the road ahead.

<sup>1</sup> Based on IHS Markit Vehicles in Operation as of June 30, 2021, for Model Years 2012 to 2021 vs. Total New Registrations of those vehicles.



**For a detailed list of specifications, features, accessories, and model comparisons, please visit [Subaru.ca](http://Subaru.ca) or your nearest authorized Subaru Retailer.**

The Supplemental Restraint System (SRS airbags) affords the driver and passenger additional protection in some collisions. This system provides supplemental protection only, and seatbelts must be worn in order to avoid injuries to out-of-position occupants upon airbag deployment. The combination of SRS and seatbelts provides the best protection in a serious accident. All illustrations, specifications, features and photographs contained in this brochure are based on product information available at the time of its printing and may not be completely accurate following its publication. Colours shown may vary due to reproduction variations in the printing process, and some vehicle parts cannot be shown in certain photographs. Subaru Canada, Inc. reserves the right to discontinue or make changes at any time, without notice or incurring obligations, to colours, materials, equipment, accessories, features, specifications and models, or to change their prices. Some models shown may be from international markets and are not available in Canada; may be shown with equipment or accessories that are optional (at extra cost) or available only in certain combinations; or may be subject to product delays or not be available in Canada. Please visit [subaru.ca](http://subaru.ca) for the latest information and specifications. For complete details on product updates and warranties, please contact your Subaru retailer. Ascent, BRZ, Crosstrek, Forester, EyeSight, Impreza, Legacy, Outback, WRX, STI, Lineartronic, X-MODE, STARLINK, Subaru and SUBARU BOXER are registered trademarks of SUBARU CORPORATION. Aha™ is a trademark of Harman International Industries, Inc. Alcantara® is a registered trademark of Alcantara S.p.A. Android™ is a trademark of Google LLC. Apple CarPlay® is a registered trademark of Apple Inc. Bluetooth® is a registered trademark of Bluetooth SIG, Inc., America. BRIN NAUB® is a registered trademark of TB Kawashima Co., Ltd. Michelin® and Pilot® are registered trademarks of Michelin North America, Inc. SiriusXM®, Travel Link®, and the SiriusXM logo, channel names and logos are trademarks of Sirius XM Radio Inc. and are used under licence by Sirius XM Canada Inc. Subscriptions to SiriusXM Canada are subject to the SiriusXM Canada Customer Agreement and other terms and conditions. TORSEN® is a registered trademark of JTEKT Corporation. Ultrasuede® is a registered trademark of Toray Industries, Inc.

† Ability of this product to access connected content is subject to change without notice and could be affected by any of the following: compatibility issues with future firmware versions of the smartphone; compatibility issues with future versions of the connected content application(s) for the smartphone; changes to or discontinuation of the connected content application(s) or service by its provider. Printed in Canada. © 2021 Subaru Canada, Inc. 2022 model year.



Environmental Management System  
(EMS) ISO 14001:2015 certified by SGS

This booklet was printed on FSC® certified paper and contains 55% recycled fibre. It is chlorine-free, recyclable and biodegradable. FSC® (Forest Stewardship Council®) is an international organization that brings people together to find solutions that promote responsible management of the world's forests. This booklet was also produced using a "GREEN" printing process, which includes vegetable-based inks that leave no harmful residue. Please recycle.



[subaru.ca](http://subaru.ca)

**SUBARU CANADA, INC.**

560 Suffolk Court, Mississauga, ON, L5R 4J7