



SUBARU

CROSSTREK





Adventure: its second coat of paint.

Meet the new 2021 Subaru Crosstrek

When you drive a new Crosstrek off the lot, it will be clean—alarmingly clean. But not for long. With this kind of far-out capability, a spontaneous adventure suddenly seems well within reason. Soon your Crosstrek will get those mud accents it deserves.







Far never felt so close.

There's a moment when you realize there are no other cars in sight—it's bound to happen when you have Subaru Symmetrical Full-Time All-Wheel Drive. An adventure has begun, and you're going to need all 220 mm of ground clearance. Terrain might get steep and slippery, but the Crosstrek has X-MODE® with Hill Descent Control.¹ You'll hold your ground.



X-MODE® with Hill Descent Control

When it comes to rough terrain, X-MODE® with Hill Descent Control¹ optimizes Vehicle Dynamics Control and other systems to help control the vehicle's speed and enhance traction. With the Crosstrek Outdoor, dual-function X-MODE® offers two settings to help you take on specific road conditions.

¹ Requires Lineartronic® CVT.

Looks don't always deceive.

The all-new Crosstrek Outdoor

With its bold styling, the Crosstrek Outdoor looks capable. But that's also how it's built. Thanks to its new SUBARU BOXER® engine, the Crosstrek Outdoor delivers 182 hp. In adverse conditions, its engineering offers the unyielding traction of dual-function X-MODE®,¹ a system that includes terrain-specific settings designed to take on snow and dirt or deep snow and mud.



New Styling

Whether it's headed for an unpaved road or it's just come back from one, the Crosstrek Outdoor makes an impression with its new cladding and alloy wheels.



Soft-touch All-weather Upholstery¹

Friendly to dogs, weather and adventure in all forms, the Crosstrek Outdoor features durable, easy-to-clean seats that are also comfortable and supportive.



Dual-function X-MODE®

In challenging conditions, dual-function X-MODE®¹ delivers reliable traction and control with two specifically designed settings: Snow/Dirt Mode for slipperier roads, and Deep Snow/Mud Mode for stickier situations.





Ready for what you are.

Cargo Versatility

The Crosstrek takes the process out of packing up. You have up to 1,565 litres of cargo room and a host of versatile features to work with, including a wide rear gate opening, standard roof rails and a cargo tonneau cover¹ to keep your gear protected in the back. There's also a 60/40-split flat-folding rear seatback to accommodate longer items and a passenger or two on the same trip.



1 Roof Rails

You can be more than fully equipped for your next destination, thanks to roof rails that come standard with the Crosstrek.



2 Cargo Tonneau Cover

To keep your gear safely hidden, the Crosstrek features a cargo tonneau cover¹ for a little extra peace of mind when you step away from your vehicle.

3 60/40 Seating

When your gear needs even more room, the Crosstrek delivers with folding rear seats that extend the cargo area and your possibilities.





Small just got spacious.

Though it might be able to squeeze into tight parking spots, the Crosstrek is noticeably roomy on the inside with up to 2,857 litres¹ of passenger space. Enter easily through its wide door openings, and sink into its supportive seats, available in durable cloth, supple leather² or soft-touch all-weather upholstery.³ It won't matter if your journey has hours left to go.

1 Power-sliding, Tilt-adjustable Glass Sunroof

When the moment is right, bring more sky into your drive.⁴

2 6-Way Power Driver Seat

With an available 6-way power driver seat⁴ and generous legroom for everyone, the Crosstrek offers comfort for any distance you travel.

3 Rear Seat Centre Armrest

The Crosstrek offers comfort for all passengers and conveniences like thoughtfully placed cup holders in the rear seat centre armrest.⁵



1 Without available power sunroof. 2 Limited trim only. See your retailer for details. 3 Outdoor trim only. See your retailer for details. 4 Sport and Limited trims only. See your retailer for details. 5 Touring, Outdoor, Sport and Limited trims only. See your retailer for details.





Make a connection.

Your music and apps are always along for the ride with SUBARU STARLINK® smartphone integration featuring Apple CarPlay® and Android™ Auto functionality. An available 8.0-inch screen makes it all easily accessible, while a 432-watt-equivalent Harman Kardon®¹ premium audio system gives your playlist a clear, detailed polish as it sings through eight speakers. Thanks to Remote Engine Start with Climate Control,² you can use your phone to set the perfect temperature even before you step in.

1 Apple CarPlay® and Android™ Auto

Step in. Connect. With Crosstrek, it's that simple, thanks to standard Apple CarPlay®³ and Android™ Auto.⁴ Voice recognition capabilities allow for hands-free use to help reduce distractions while on the road.

2 Multifunction Display

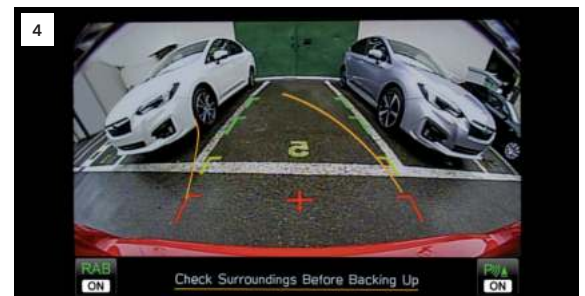
The available 6.3-inch full-colour LCD multifunction display⁵ at the top of the instrument panel makes useful information easy to see and understand.

3 Meter Display

The available 4.2-inch full-colour LCD meter display helps you understand useful driving information with a quick glance so you can keep your eyes on the road.

4 Rearview Camera

Conveniently manoeuvre the Crosstrek in tight city spaces with ease. When you shift into reverse, the camera displays a live colour image on the head unit display, along with guidelines to assist with parking.



¹ Limited trim only. Harman Kardon® is a registered trademark of Harman International Industries, Inc. ² Availability varies by trim level. See your retailer for details. Activation with subscription required. ³ Apple CarPlay® is a registered trademark of Apple Inc. ⁴ Android™ and Android™ Auto are trademarks of Google LLC. ⁵ Touring, Sport, Outdoor and Limited trims only.



An extra set of eyes every time you drive.

EyeSight® Driver Assist Technology^{1,2} integrates multiple safety and convenience features so you'll always feel comfortable and protected, wherever you go. EyeSight® gives you a virtual second pair of eyes on the road that can warn you of potential danger ahead and even apply the brakes if necessary. It's a vigilant safety feature that gives peace of mind to every drive. Once you experience it, driving will never be the same.



Pre-Collision Braking

A driver ahead unexpectedly hits the brakes or cuts you off. EyeSight®^{1,2} warns you, applies brakes to help avoid impact and, at lower speeds, can even help you stop your Crosstrek.



Lane Departure and Sway Warning with Lane Keep Assist

You accidentally drift to the edge of your lane and begin to cross into another. EyeSight®^{1,2} watches for lane markers and can alert you with visual and audible warnings before you leave your lane. And when activated, Lane Keep Assist can even help steer you back into your proper course.



Adaptive Cruise Control with Lane Centring Assist

This system helps keep you centred in your lane, at a safe distance behind the car in front of you—even in traffic and around curves.



Pre-Collision Throttle Management

This system reduces power to your engine to help you avoid accidentally accelerating into the car in front of you while merging, or if you unintentionally put your Crosstrek in Drive instead of Reverse.

¹ EyeSight® is a driver assist technology, which may not operate optimally under all driving conditions. The driver is always responsible for safe and attentive driving. System effectiveness depends on many factors such as vehicle maintenance, weather and road conditions. The Pre-Collision Braking System is designed to provide automatic braking that either prevents a collision or reduces the severity of a frontal impact. Pre-Collision Throttle Management is designed to reduce acceleration and minimize the severity of certain frontal impacts. Lane Centring Assist is designed to assist the driver and are not substitutes for safe and attentive driving. Lane centring function operates only when used in conjunction with Adaptive Cruise Control. The Lane Departure and Sway Warning, and Lane Keep Assist operate only when the lane markings are visible, and its effectiveness depends on many factors. See Owner's Manual for complete details on system operation and limitations. ² Availability varies by trim level. See your retailer for details.

Protect what you love.

Enhanced Safety

Safety is more than a duty for us—it's a passion. That's why every Crosstrek is built on the Subaru Global Platform with a strong Ring-shaped Reinforcement Frame. To help improve driver visibility, available LED Steering Responsive Headlights¹ can help you see around corners, and High Beam Assist can automatically dim and activate your high beams as needed.¹



Blind-Spot Detection

Using radar sensors, Blind-Spot Detection warns you with a visual indicator on your exterior mirror if it senses a vehicle in your blind spot. Another feature of this system, Lane Change Assist, alerts you with a flashing indicator on your exterior mirror if it senses a vehicle approaching at a higher speed in a neighbouring lane and you signal for a lane change.^{1,2}



Rear Cross-Traffic Alert

Rear Cross-Traffic Alert uses radar sensors to help warn you of traffic approaching from the side as you are backing up, utilizing a flashing visual indicator on your exterior mirror and Rearview Camera display as well as an audible warning.^{1,2}

1 Availability varies by trim level. See your retailer for details. 2 Blind-Spot Detection, Lane Change Assist and Rear Cross-Traffic Alert are systems designed to assist the driver by monitoring the rear and side areas of the vehicle during a lane change or reversing and are not a substitute for safe and attentive driving. 3 The Reverse Automatic Braking System is not a substitute for safe and attentive driving. System effectiveness depends on many factors, such as vehicle maintenance, weather and road conditions. Always exercise caution and use vehicle mirrors and the Rearview Camera when backing up. See Owner's Manual for complete details on system operation and limitations. 4 Activation with subscription required.



Reverse Automatic Braking

Reverse Automatic Braking can detect objects directly behind your vehicle when backing up at a low speed and can help bring the Crosstrek to a stop if it detects an object within its range and the brakes have yet to be applied. There's also the Rearview Camera to help you keep an eye out.^{1,3}



SUBARU STARLINK® Connected Services

The Crosstrek features next-generation SUBARU STARLINK® Connected Services technology,^{1,4} bringing you added safety, security and convenience. It can alert a first responder in an emergency, help police locate your vehicle if it's stolen and more. And to get you started, new Crosstrek drivers enjoy a free three-year SUBARU STARLINK® Connected Services subscription, which includes Advanced Automatic Collision Notification, Enhanced Roadside Assistance, SOS Emergency Assistance and more.

2021 Crosstrek | Features & Dimensions

Apple CarPlay®^{1,2} / Android™ Auto^{2,3}



Power Glass Sunroof⁴ and Roof Rails



18-inch Aluminum-alloy Wheels⁵



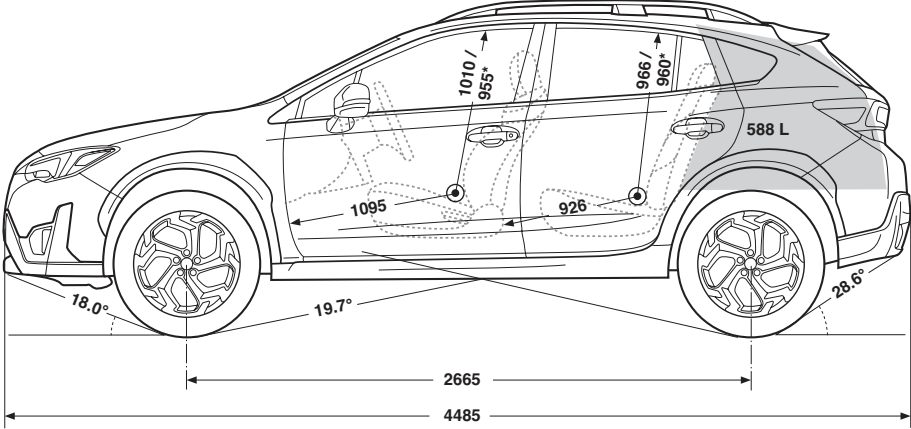
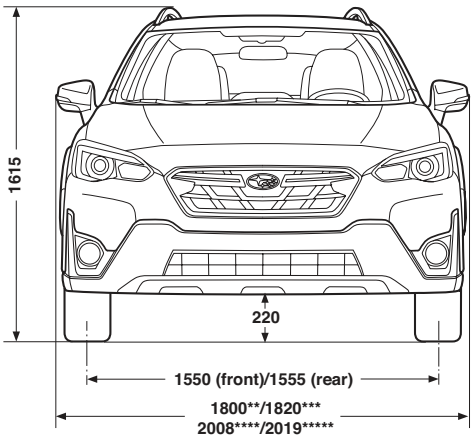
Power Driver Seat⁴



Dual-zone Automatic Climate Control⁵



Heated Steering Wheel⁶



Measurements in millimetres unless specified.
* With available sunroof.
** With mirrors folded.
*** Outdoor trim with mirrors folded.
**** Mirrors extended.
***** Mirrors with integrated turn signals extended.

For a detailed list of specifications, features, accessories and model comparisons, please visit Subaru.ca or your nearest authorized Subaru Retailer.

1 Apple CarPlay® and iPod® are registered trademarks of Apple Inc. 2 Compatible smartphone and applications required. Data provided by smartphone is displayed on the audio system screen. Some provinces prohibit the operation of handheld electronic devices while operating a vehicle. Smartphone apps should only be launched when vehicle is safely parked. Aha™ is a trademark of Harman International Industries, Inc. Your wireless carrier's rates may apply. 3 Android™ and Android™ Auto are trademarks of Google LLC. 4 Sport and Limited trims only. Not available on Convenience, Touring and Outdoor trims. 5 Limited trim only. 6 Touring, Outdoor, Sport and Limited trims only. 7 Bluetooth® is a registered trademark of Bluetooth SIG, Inc., America. 8 EyeSight® is a driver assist technology, which may not operate optimally under all driving conditions. The driver is always responsible for safe and attentive driving. System effectiveness depends on many factors such as vehicle maintenance, weather and road conditions. See Owner's Manual for complete details on system operation and limitations. 9 Subscription required. Includes 3-month trial subscription. See your retailer for details. 10 Activation with subscription required. 11 Blind-Spot Detection, Lane Change Assist and Rear Cross-Traffic Alert are systems designed to assist the driver by monitoring the rear and side areas of the vehicle during a lane change or reversing and are not a substitute for safe and attentive driving. 12 The Reverse Automatic Braking System is not a substitute for safe and attentive driving. System effectiveness depends on many factors, such as vehicle maintenance, vehicle speed, weather and road conditions. Always exercise caution and use vehicle mirrors and the Rearview Camera when backing up. See Owner's Manual for complete details on system operation and limitations. 13 Harman Kardon® and GreenEdge® are registered trademarks of Harman International Industries, Inc.

2021 Crosstrek | Trim Levels



Convenience

- 152-hp 2.0-litre 4-cylinder SUBARU BOXER® engine with Direct Injection
- Subaru Symmetrical Full-Time All-Wheel Drive
- 6-speed manual transmission or optional Lineartronic® CVT (Continuously Variable Transmission) with X-MODE®
- Active Torque Vectoring
- 220 mm of ground clearance
- 17-inch aluminum-alloy wheels
- Power-adjustable, heated, body-colour side mirrors
- Roof rails
- Roofline spoiler with integrated brake light
- Cloth upholstery
- 6-way manually adjustable driver's seat. 4-way manually adjustable front-passenger's seat.
- Automatic climate control
- One-touch turn signal
- Information display
- Electronic cruise control
- Rearview Camera
- 6.5-inch infotainment system: AM/FM/MP3/WMA audio system with high-resolution touchscreen display, Apple CarPlay®,^{1,2} Android™ Auto,^{2,3} STARLINK® smartphone integration (including Aha™ radio),² 4 speakers, USB port/iPod®¹ control, auxiliary audio input, steering wheel-integrated controls, Bluetooth®⁷ mobile phone connectivity with voice activation and Bluetooth®⁷ streaming audio
- Convenience with EyeSight®: Includes EyeSight® Driver Assist Technology,⁸ Gauge cluster with colour LCD display, Lineartronic® CVT, X-MODE®, Auto Start Stop and SI-DRIVE



Touring

Includes Convenience key features and adds/upgrades:

- Proximity key with push-button start
- LED fog lights
- Auto-on/off headlights
- Leather-wrapped steering wheel
- Dual-mode heated front seats
- Heated steering wheel
- Windshield wiper de-icer
- Steering wheel-mounted paddle shifters (CVT only)
- Rear centre armrest with cupholders
- CD player
- SiriusXM® Satellite Radio⁹ with Advanced Audio features
- Dual USB input ports/iPod®¹ control
- SUBARU STARLINK® Connected Services¹⁰ (free 3-year trial subscription included)
- 6 speakers
- Gauge cluster with colour LCD display
- 6.3-inch colour multifunction display
- Cargo-area tonneau cover
- Touring with EyeSight®: Includes EyeSight® Driver Assist Technology,⁸ Lineartronic® CVT with paddle shifters, X-MODE®, Auto Start Stop and SI-DRIVE



Outdoor

Includes Touring with EyeSight® key features and adds/upgrades:

- 182-hp 2.5-litre 4-cylinder SUBARU BOXER® engine with Direct Injection
- Dual-function X-MODE®
- 17-inch aluminum-alloy wheels in dark grey metallic finish
- Outdoor front bumper, grille and side cladding
- Gun metallic exterior accents and badging
- Front-view camera
- Rear liftgate lamp
- Soft-touch all-weather upholstery with yellow contrast stitching
- Subaru Rear/Side Vehicle Detection (SRVD) with Blind-Spot Detection (BSD) and Rear Cross-Traffic Alert (RCTA)¹¹
- 8.0-inch infotainment system: AM/FM/CD/MP3/WMA audio system with high-resolution touchscreen display, Apple CarPlay®,^{1,2} Android™ Auto,^{2,3} STARLINK® smartphone integration (including Aha™ radio),² 6 speakers, dual USB port/iPod®¹ control, auxiliary audio input, steering wheel-integrated controls, Bluetooth®⁷ mobile phone connectivity with voice activation and Bluetooth®⁷ streaming audio, and SiriusXM® Satellite Radio⁹ with Advanced Audio Features and Travel Link®⁹ (Optional Services)
- Dual USB charge ports in centre console



Sport

Includes Touring key features and adds/upgrades:

- LED Steering Responsive Headlights (SRH)
- Power tilting and sliding glass sunroof
- Aluminum pedals
- Power driver's seat
- Subaru Rear/Side Vehicle Detection (SRVD) with Blind-Spot Detection (BSD) and Rear Cross-Traffic Alert (RCTA)¹¹
- 8.0-inch infotainment system: AM/FM/CD/MP3/WMA audio system with high-resolution touchscreen display, Apple CarPlay®,^{1,2} Android™ Auto,^{2,3} STARLINK® smartphone integration (including Aha™ radio),² 6 speakers, dual USB port/iPod®¹ control, auxiliary audio input, steering wheel-integrated controls, Bluetooth®⁷ mobile phone connectivity with voice activation and Bluetooth®⁷ streaming audio, and SiriusXM® Satellite Radio⁹ with Advanced Audio Features and Travel Link®⁹ (Optional Services)
- Dual USB charge ports in centre console
- Sport with EyeSight®: Includes EyeSight® Driver Assist Technology,⁸ Reverse Automatic Braking (RAB),¹² High Beam Assist (HBA), Lineartronic® CVT with paddle shifters, X-MODE®, Auto Start Stop and SI-DRIVE



Limited

Includes Sport with EyeSight® key features and adds/upgrades:

- 182-hp 2.5-litre 4-cylinder SUBARU BOXER® engine with Direct Injection
- 18-inch aluminum-alloy wheels
- Body-colour side mirrors with integrated LED turn signals
- Chrome door handles and door trim moldings
- Leather-trimmed upholstery
- Dual-zone automatic climate control system
- 8.0-inch infotainment system with navigation: AM/FM/CD/MP3/WMA audio system with high-resolution capacitive touchscreen display with GPS navigation system, Apple CarPlay®,^{1,2} Android™ Auto,^{2,3} STARLINK® smartphone integration (including Aha™ radio),² dual USB port/iPod®¹ control, auxiliary audio input, SMS text messaging capability, Bluetooth®⁷ mobile phone connectivity with voice activation and Bluetooth®⁷ streaming audio, and SiriusXM® Satellite Radio⁹ with Advanced Audio Features, SiriusXM® Traffic®⁹ and Travel Link®⁹ (Optional Services)
- 8-speaker, 432-watt-equivalent Harman Kardon®¹³ GreenEdge®¹³ premium audio system

2021 Crosstrek | Colours

Exterior Colours



Crystal White Pearl



Ice Silver Metallic



Cool Grey Khaki



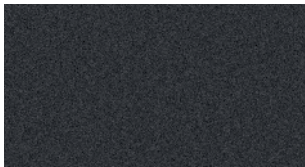
Plasma Yellow Pearl



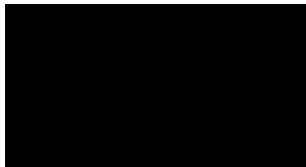
Pure Red



Dark Blue Pearl



Magnetite Grey Metallic



Crystal Black Silica

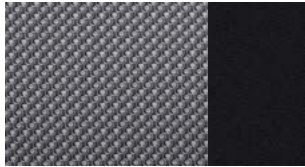
Seat Material



Black Cloth (BC)



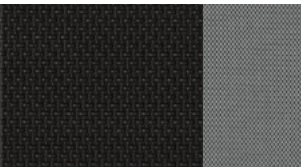
Black Premium Cloth (BPCT)
Touring



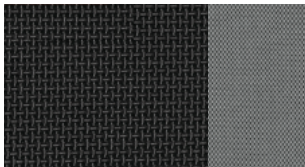
Black Premium Cloth (BPCS)
Sport



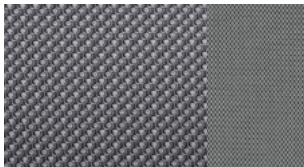
Black Leather (BL)



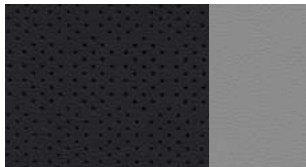
Grey Cloth (GC)



Grey Premium Cloth (GPCT)
Touring



Grey Premium Cloth (GPCS)
Sport



Grey Leather (GL)



Soft-touch All-weather
Upholstery (ST)

Colour Combinations	Convenience	Touring	Outdoor	Sport	Limited
Crystal White Pearl	BC	BPCT	ST	BPCS	BL
Ice Silver Metallic	BC	BPCT	–	BPCS	BL
Cool Grey Khaki	GC	GPCT	ST	GPCS	GL
Plasma Yellow Pearl	–	–	ST	–	–
Pure Red	–	BPCT	ST	BPCS	BL
Dark Blue Pearl	–	BPCT	ST	BPCS	BL
Magnetite Grey Metallic	BC	BPCT	ST	BPCS	BL
Crystal Black Silica	BC	BPCT	ST	BPCS	BL



Subaru Warranties

Every Subaru vehicle is designed and built to offer our customers the highest possible level of quality and reliability. We are proud of our vehicles and proud to stand behind them with a comprehensive warranty. For 2021 model-year vehicles, the warranty on all Subaru vehicles consists of the following:

New Vehicle Limited Warranty (36 month/60,000 km) – Covers basic and major components for 36 months or 60,000 km.

Major Component Limited Warranty (60 month/100,000 km) – Extends coverage of major components (more than just powertrain) up to 60 months or 100,000 km.

Surface Corrosion Limited Warranty (36 month/60,000 km) – Covers surface corrosion to visible painted body panels for 36 months or 60,000 km.

Anti-Perforation Limited Warranty (60 month/unlimited km) – Covers perforation due to corrosion to body sheet metal panels for 60 months, regardless of kilometres.

Emission Control System Limited Warranty – Covers some emissions components for 36 months or 60,000 km and the major parts of the emission control system for 96 months or 130,000 km.

Parts and Accessories Limited Warranty – Covers Subaru parts and accessories installed by the retailer prior to retail delivery of the vehicle for 36 months or 60,000 km, and Subaru parts and accessories installed by the retailer after the retail delivery of the vehicle for 12 months or 20,000 km from the date of the installation.

The above information is an overview of warranty coverage and is not a warranty statement. If you wish to see more details regarding Subaru warranties, please refer to your Subaru warranty booklet, contact your local retailer or visit our Web site at subaru.ca.

Subaru 360 C.A.R.E. Program (36 months/unlimited km)

Access to dedicated Subaru 360 C.A.R.E. (Customer Assistance for Roadside Emergencies) Roadside Assistance Services, which includes access to 1,000 CAA and AAA offices throughout Canada and the United States. In addition to towing, coverage also includes Fuel Delivery, Battery Boost, Flat Tire Service, Lock-Out Service, Trip Accident & Mechanical Breakdown Assistance Service, Winching and Extrication Service, Personalized Trip Planning and Routing, Theft and Hit-and-Run Reward, and Arrest Bond Certificate.

The above information is an overview of services. If you wish to see more details regarding Subaru 360 C.A.R.E., please visit our Web site at subaru.ca.

Subaru Protection Plan

As a Subaru owner, you have expectations for a pleasurable, trouble-free ownership experience – now and into the future. Once your 36-month/60,000-km New Vehicle Limited Warranty period ends,¹ our Subaru Protection Plan (SPP) – the only vehicle service contract endorsed by Subaru Canada for Subaru vehicles – can prolong your hassle-free ownership experience with three levels of extended service contract coverage tailored to your needs: Powertrain Protection; Major Protection; or Complete Protection (best level of coverage to complement the 60-month/100,000-km Major Component Limited Warranty). SPP offers comprehensive mechanical and electrical coverage and a number of additional features and benefits, such as Roadside Assistance and Alternate Transportation, for up to 7 years or 160,000 kilometres from your vehicle's in-service date. Whether your vehicle is purchased or leased, SPP protects you and your investment. Be sure to ask your retailer for details or visit subaru.ca.

¹ If you already own a Subaru vehicle and it is still within the 36-month/60,000-km New Vehicle Limited Warranty period, you are still eligible for SPP.

Subaru vehicles are uniquely designed to get out there more and to leave less behind. We build our vehicles for maximum longevity, because more time spent on the road equals less time spent in junkyards and landfills. In fact, 98% of Subaru vehicles sold in Canada over the last 10 years are still on the road today.¹ You'll also find very little waste created in the production of a Subaru. Many of our vehicles are built in the Subaru of Indiana Automotive, Inc., (SIA) factory, which was the first manufacturing facility in the U.S. to achieve zero-landfill status. Other Subaru facilities around the world now achieve similar goals in helping to preserve the environment. Respect for our surroundings is yet another way that Subaru vehicles help to build driver confidence for the road ahead.

¹ Based on IHS Markit, Canadian Vehicles in Operation as of June 30, 2019, for Model Years 2010 to 2019 vs. Total New Registrations of those vehicles.



For a detailed list of specifications, features, accessories and model comparisons, please visit Subaru.ca or your nearest authorized Subaru Retailer.

The Supplemental Restraint System (SRS airbags) affords the driver and passenger additional protection in some collisions. This system provides supplemental protection only, and seatbelts must be worn in order to avoid injuries to out-of-position occupants upon airbag deployment. The combination of SRS and seatbelts provides the best protection in a serious accident. All illustrations, specifications, features and photographs contained in this brochure are based on product information available at the time of its printing, and may not be completely accurate following its publication. Colours shown may vary due to reproduction variations in the printing process, and some vehicle parts cannot be shown in certain photographs. Subaru Canada, Inc. reserves the right to discontinue or make changes at any time, without notice or incurring obligations, to colours, materials, equipment, accessories, features, specifications and models, or to change their prices. Some models shown may be from international markets and are not available in Canada, or they may be shown with equipment or accessories that are optional (at extra cost) or only available in certain combinations, or they may be subject to product delays or not be available in Canada. Please visit subaru.ca for the latest information and specifications. For complete details on product updates and warranties, please contact your Subaru retailer. Ascent, BRZ, Impreza, Outback, Legacy, Forester, WRX, STI, Crosstrek, Lineartronic, Subaru and SUBARU BOXER are registered trademarks. Confidence in Motion and STARLINK are trademarks of SUBARU CORPORATION. Aha™ is a trademark of Harman International Industries, Inc. Apple CarPlay® and iPod® are registered trademarks of Apple Inc. Bluetooth® is a registered trademark of Bluetooth SIG, Inc., America. Harman Kardon® is a registered trademark of Harman International Industries, Inc. SiriusXM®, Sirius®, XM®, Traffic®, and the SiriusXM logo, channel names and logos are trademarks of Sirius XM Radio Inc. and are used under licence by Sirius XM Canada Inc. Subscriptions to SiriusXM Canada are subject to the SiriusXM Canada Customer Agreement and other terms and conditions. Printed in Canada. © 2020 Subaru Canada, Inc. 2021 model year.



Environmental Management System
(EMS) ISO 14001:2015 certified by SGS

This booklet was printed on FSC® certified paper and contains 55% recycled fibre. It is chlorine-free, recyclable and biodegradable. FSC® (Forest Stewardship Council®) is an international organization that brings people together to find solutions that promote responsible management of the world's forests. This booklet was also produced using a "GREEN" printing process, which includes vegetable-based inks that leave no harmful residue. Please recycle.



subaru.ca

SUBARU CANADA, INC.

560 Suffolk Court, Mississauga, ON, L5R 4J7