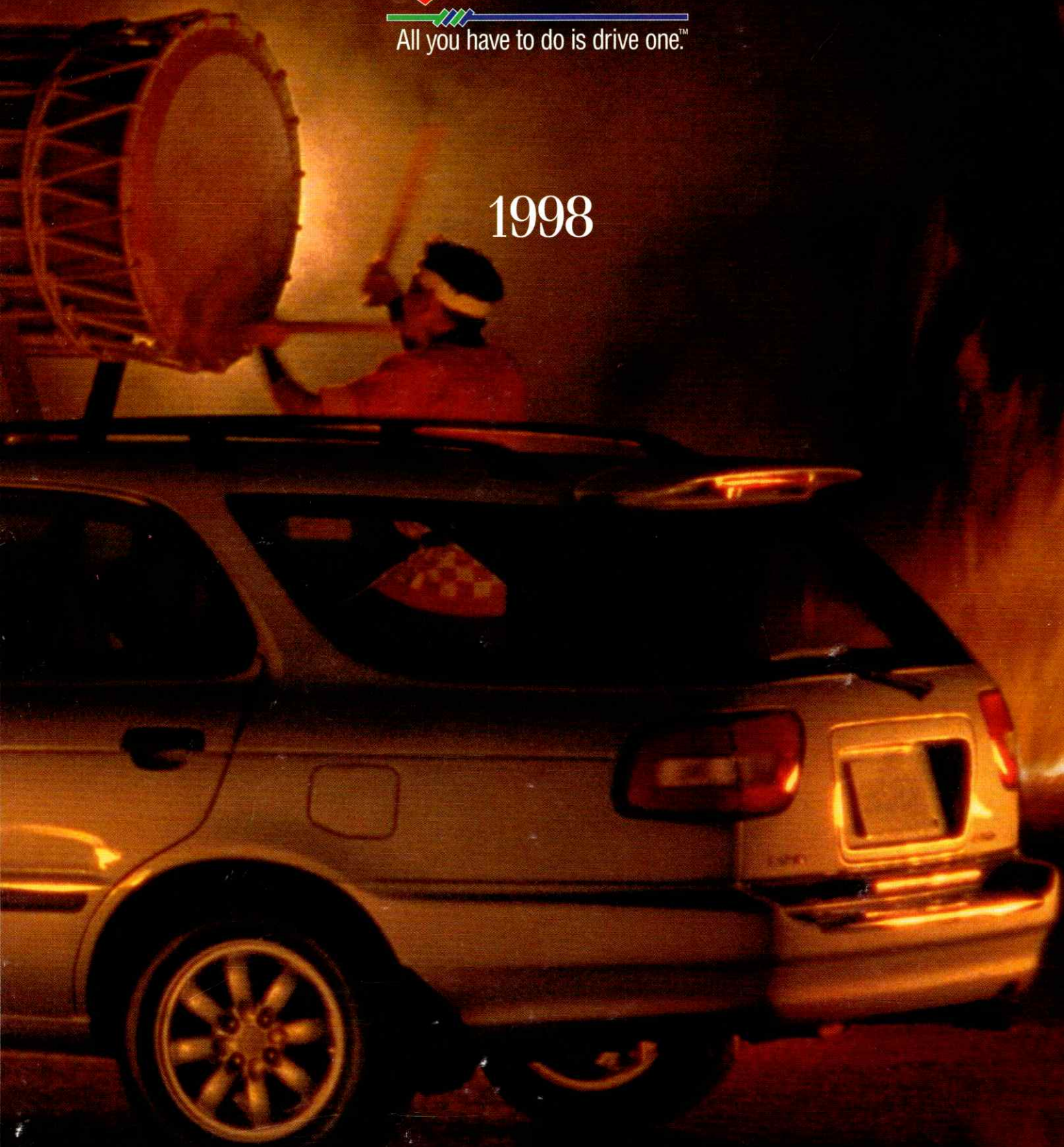




1998







▲ **SANDRA MacDAVID, Retiree**

*I've been driving Suzuki vehicles for a while now, and love the Japanese quality and reliability built into each one—not to mention the great service I get at my Suzuki Dealership. Exactly how impressed am I? Well, I trust my Dealer so much that I've bought two Suzuki vehicles over the phone from my kitchen!*

## 1998 ESTEEM WAGON

Last year, we achieved a Suzuki landmark—10 million vehicles sold worldwide.

This year, we're celebrating by introducing the all-new Esteem Wagon to Canada (though we can't technically say "introducing" as it's already a hit in Europe and Japan). It's got all the Japanese quality and features you'll find in our Esteem sedan, with one difference—more cargo space.

The Esteem Wagon promises to be one of the most practical, stylish and sporty looking vehicles on the road. With a 16 valve 1.6 litre four cylinder



engine, electronic multi-point fuel injection and safety features including dual airbags, side impact beams and child safety rear door locks as well as comfort features like 14 inch wheels and tires, front/rear mud flaps, roof rails, intermittent front windshield

wipers (and a wiper washer in the rear) and an AM/FM 4 speaker cassette stereo system, Esteem Wagon leaves the competition in the dust. Move up to the Esteem Wagon GLX and revel in air conditioning, aluminum alloy wheels, power windows, door locks and mirrors and a rear spoiler. It's the perfect vehicle for folks looking for a little more room.

We're proud of our Esteem Wagon. We know you will be too. So if you'd like to find out how well the Esteem Wagon is built, take a test drive.

But be careful. It might just wind up in your driveway.



# Introducing the all new 1998 Esteem Wagon.



Every 1998 Suzuki comes equipped with dual airbags.







## 1998 ESTEEM SEDAN

The Sedan. A true statement for the '90's driver. Reliable and stylish, dependable and versatile. A good value all-around.

Meet the Esteem Sedan. It's designed to be stylish without sacrificing practicality. When these two elements weave themselves together this well, you know you've got a winner.

Every detail of the Esteem Sedan has been designed with you in mind. A 16 valve, 1.6 litre 4-cylinder engine, electronic multi-point fuel injection and safety features like dual airbags, side impact beams and child safety rear door



locks. Of course, if you decide to move up to the GLX, you'll also get air conditioning, 14 inch tires, power windows, door locks and mirrors and an AM/FM 4 speaker cassette stereo system. But whatever model you

choose, you'll be getting the Japanese quality that's made us famous in over 172 countries.

There are enough standard features and accessories to put together an Esteem Sedan that's perfect for your needs.



*Dependability and value—with European flair.*



Every 1998 Suzuki comes equipped with dual airbags.





## 1998 SIDEKICK SPORT

In the market for a new SUV? Check out the company that invented the category. Frankly, we're one of the best makers of 4X4s on the planet.

And we have the Sidekick Sport to prove it.

Look at the features. A 1.8 litre, 4-cylinder twin cam engine, 4-wheel drive, anti-lock brakes, power windows and door locks and an AM/FM stereo cassette with four speakers. This year, we've also improved the interior seat design and dashboard to provide a more ergonomic drive.

Move to our JLX model and get air



conditioning, aluminum alloy wheels, deluxe front and rear mud flaps, automatic freewheeling hubs, map lights and an AM/FM stereo CD player.

There's also the things you may not have thought about. Like the fact that the Sidekick Sport is built on a ladder-

frame chassis. Elementary? Not when you consider the fact that some other SUVs are built on a car chassis. That's right, a car chassis.

Yet another reason why we're regarded as a world leader in 4X4 technology.



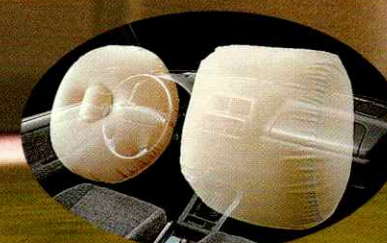
### ▲ KEN MARSH, Outdoorsman

At 6'5" and 290 pounds, I don't get into just any 4x4. That's why I drive a Sidekick. It's got way more room than the half-ton I used to drive. You name it, we've done it—camping, fishing, even a wedding party! On road or off, it's the most reliable 4x4 around.

*Go anywhere, do anything—in complete comfort.*



Every 1998 Suzuki comes equipped with dual airbags.





# Canada's most economical sport-utility vehicle.

## ▲ SHANA SPRINGMAN, Rehabilitation therapy assistant

When my dad bought the first Suzuki Sidekick, he had no idea what he was starting. Soon, both my mom and brother were driving them too! So when it came time for my first 4x4, what else was I supposed to do? I bought a 2-Door Sidekick with its legendary Japanese quality—and now we have four.

## 1998 2 DOOR SIDEKICK

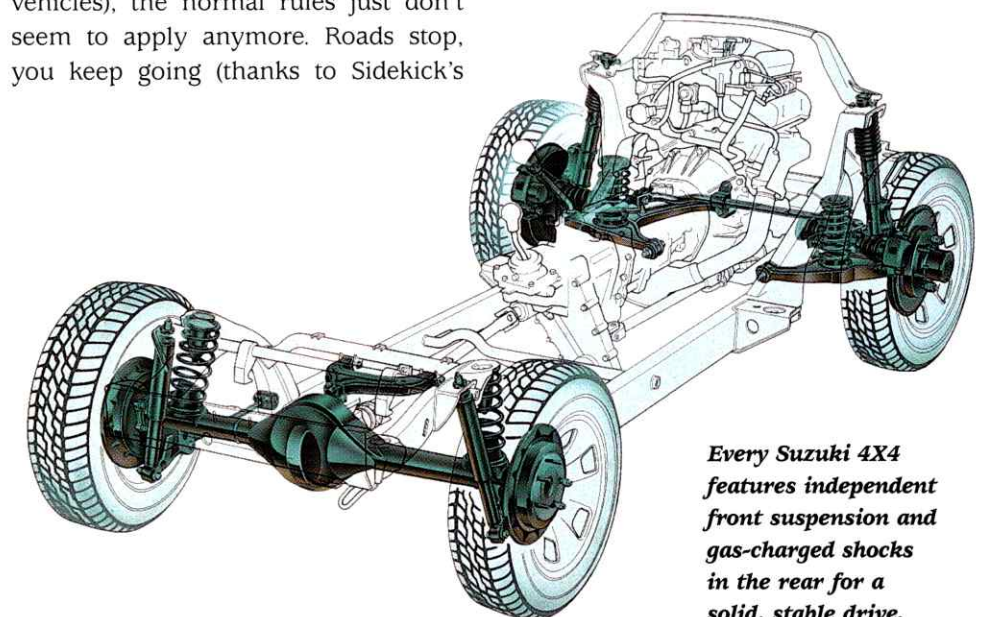
If you believe that getting there is half the fun, check out the 4x4 that Transport Canada's rated the most economical sport utility vehicle in the country. And the 4x4 that owners call dependable and fun.

Meet the 2-Door Sidekick. Here's how it works. You get into the driver's seat and turn the key. Ample power is supplied by a 1.6 litre 16 valve, 4 cylinder engine. Surrounded by features like dual airbags, side impact beams, an aggressive new 2-tone look with flared wheelwells and raised white letter tires, you drive out of the lot.

Suddenly (as in many Suzuki vehicles), the normal rules just don't seem to apply anymore. Roads stop, you keep going (thanks to Sidekick's

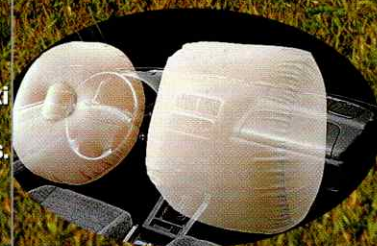
true 4X4 high and low range transfer case as well as its specially designed ladder-frame). Tight parking spaces are a thing of the past. If it's a nice day, you can easily fold down the top and feel the wind in your hair. Every destination you can imagine is right there for the taking—with some of the best fuel mileage around.

It's a wonderful experience. And we're flattered. Look around—we knew we were onto something when we introduced it. Every year, we make it better and every year, more and more Canadians put the 2 Door Sidekick on—and off—the road.



Every Suzuki 4X4 features independent front suspension and gas-charged shocks in the rear for a solid, stable drive.

Every 1998 Suzuki comes equipped with dual airbags.







▲ **RICK STEER, Entrepreneur**

*In 1993, I decided to start a courier service. What better business partner than a Suzuki Swift? Since then, we've both done well. Business is booming, and my Suzuki Swift's got over 230,000 kilometres logged so far. The best part is that it's still running like it was on day one!*

## 1998 SWIFT

What do you get when you cross Japanese quality with the kind of value you just can't find every day?

The Suzuki Swift.

It's enough to make our competitors green with envy—a high quality, highly crafted Japanese vehicle that you can buy for less than other base models.

We've made the Suzuki Swift for years and we make the Suzuki Swift better every year. Like this year—we've revamped the exterior for an aggressive new look with redesigned headlamps

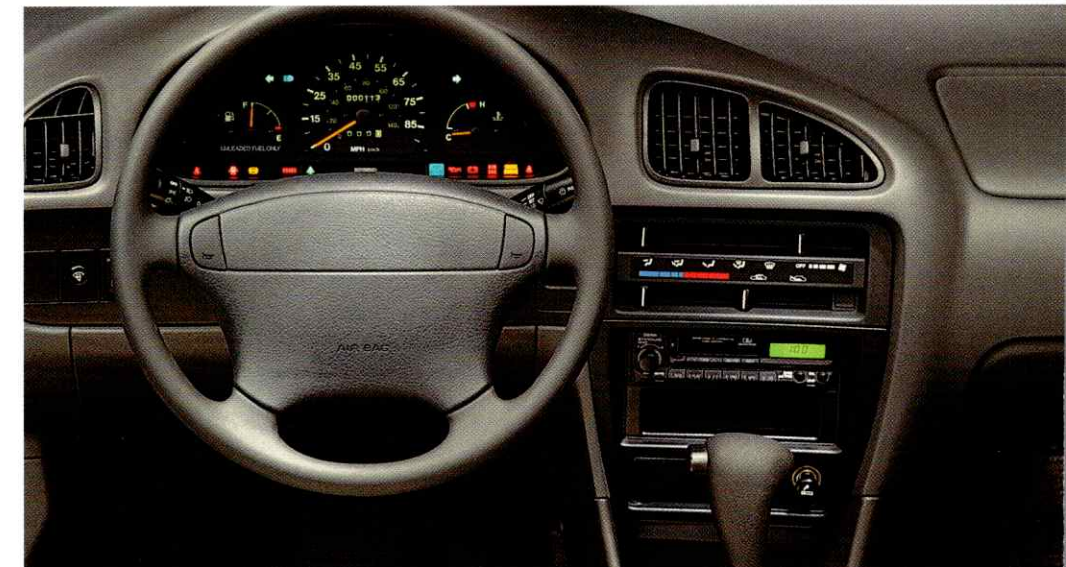
and front and rear bumper styling. We've also added a peppy new multi-point electronically fuel injected 1.3 litre, 16 valve 4 cylinder engine.

But the Suzuki Swift still has all the features that have made it famous. Multi-point electronic fuel injection (new for '98), a transmission in 5 speed manual or 3 speed automatic, dual airbags, side impact beams, a rear parcel shelf, rear wiper-washer, dual mirrors and a fold-down rear seat.

Quite simply, the Suzuki Swift is



the best value on the road today. But more importantly, in the opinion of our customers. That's why we're among the top three Canadian car manufacturers in customer satisfaction (according to a recent CAA survey).



*Japanese quality has never been so accessible.*



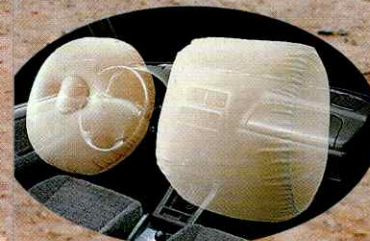
Every 1998 Suzuki comes equipped with dual airbags.



*The best 4x4x4 door value — on or off the road.*



Every 1998 Suzuki comes equipped with dual airbags.



▲ **CLIFF KAFKA, Mountain bike enthusiast**

*Want to hear about Japanese quality at it's best? Try driving down the Hope-Princeton highway in some of the worst driving conditions in B.C. history—the great snowstorm of '97. Not only did my 4-Door Sidekick get me home safely, it allowed me to tow out other vehicles along the way.*

**1998 4 DOOR SIDEKICK**

How do you define a classic—by the amount of time it's spent on the scene? By the amount of affinity people have for it? By a dogged determination to remain unique?

We've got a truly unique classic. The 4-Door Sidekick Classic. It's been one of our most popular 4x4's for years. Perhaps it's because of the Sidekick Classic's incredible durability. Or the fact that it's still Canada's lowest priced 4-door 4X4.

It all starts with a single overhead cam 16 valve 1.6 litre four cylinder engine. The power it provides is ample, and is available with either a 5 speed manual or four speed automatic (with overdrive) transmission—both of which come with multi-point electronic fuel injection. Not to mention the high and low range



transfer case that comes standard in all our Sidekicks.

But it doesn't stop there. Dual airbags, side impact beams, child safety rear door locks and a split fold-down rear seat (allowing you to virtually customize your interior) are a few of the other features that come standard on the Sidekick Classic.

In short, it's one of the best ways to get to where you're going.







Getting there's half the fun.

▲ **FARAH HORNETT, Student**

*Nothing beats a drive through town on a hot summer day with my X-90's T-top roofs down and the wind in my hair. It's the first new vehicle I've ever owned—and I'm so impressed with the Suzuki X-90's fantastic Japanese quality that I'll probably be a Suzuki driver for life!*

**1998 X-90**

How much fun can you possibly have in a vehicle?

If the X-90's any indication, the answer's easy. As much fun as you want.

Another lauded innovation from Suzuki, the X-90 is one of the most attention-grabbing vehicles on the road. Especially when you take the T-top roof panels off, stow them in the spacious trunk and head out for a ride you won't soon forget.

The Suzuki X-90 is also one of the best built vehicles around. A 16 valve, 1.6 litre 4-cylinder engine, electronic multi-point fuel injection, a 5 speed manual or 4 speed automatic transmission and safety features including dual airbags, side impact beams and 4-wheel anti-lock brakes. You'll also enjoy power windows and door locks, cruise control, AM/FM stereo cassette



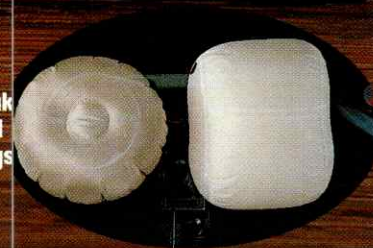
with 4 speakers, aluminum wheels with true 4X4 auto locking hubs, a locking fuel door, a rear spoiler and a redesigned interior featuring protein leather seats. The X-90 is a true all-season sports vehicle—which means that you can have as much fun off the beaten path as on. Any time, anywhere, any season.

That's just the way it is when you own a true year-round sport utility vehicle.

When the weather heats up, just pop off the X-90's glass T-top panels and enjoy the ride.



Every 1998 Suzuki comes equipped with dual airbags





# SPECIFICATIONS

## 1998 ESTEEM WAGON

<b>Engine</b> .....	16 valve, SOHC, inline 4 cylinder	
<b>Displacement</b> .....	1.6 litres	
<b>Horsepower</b> .....	95 @ 6,000 rpm	
<b>Torque (lb - ft)</b> .....	99 @ 3,000 rpm	
<b>Injection Type</b> .....	Electronic Fuel Injection (Multi-point)	
<b>Fuel Type</b> .....	Regular Unleaded	
<b>Transmission</b> .....	5 Speed Manual (GL) 4 Speed Automatic with Overdrive (GL/GLX)	
<b>Fuel Consumption</b>	<b>M/T</b>	<b>A/T</b>
City L/100km (mpg).....	8.1 (35)	8.4 (33)
Highway L/100km (mpg).....	6.0 (47)	6.2 (46)
<b>Dimensions - mm (inches)</b>		
Wheelbase.....	2,480 (97.6)	
Length.....	4,345 (171.1)	
Width.....	1,690 (66.5)	
Height.....	1,460 (57.5)	
<b>Capacities - litres (cu. ft.)</b>		
Passenger index.....	2,444 (86.3)	
Cargo volume index.....	680 (24.0)	
Fuel tank.....	51 litres	
<b>Weights - kg (lbs)</b>	<b>M/T</b>	<b>A/T</b>
Curb weight.....	1,070 (2,359)	1,080 (2,381)
Gross vehicle weight rating.....	1,520 (3,351)	
<b>Steering</b> .....	Power Assisted Rack & Pinion	
<b>Brakes</b>		
Front.....	Power Assisted Ventilated Disc	
Rear.....	Power Assisted Drum	
<b>Suspension</b> .....	Independent 4-wheel Macpherson Strut with Front Stabilizer Bar	
<b>Tires</b> .....	P185/60R14	

	GL	GLX
<b>Interior Equipment</b>		
Air Conditioning.....	O	S
Variable Intermittent Wipers.....	S	S
Tachometer.....	NA	S
Trip Odometer.....	S	S
12 Volt Outlet.....	S	S
Reclining Front Seats.....	S	S
Seat Back Pockets.....	NA	S
Underfloor Storage Compartment.....	S	S
Cargo Area Side Storage Compartment.....	S	S
ETR AM/FM Stereo Cassette		
with 4 Speakers & Digital Clock.....	S	S
Power Windows.....	NA	S
Power Door Locks.....	NA	S
Split Fold Down Rear Seat.....	S	S
Cup Holders.....	S	S
Full Centre Console.....	S	S
Front Door Pockets.....	S	S
Remote Fuel Lid Release.....	S	S
Remote Trunk Release.....	NA	S
Electric Rear Defroster.....	S	S

<b>Exterior Equipment</b>		
Aluminum Alloy Wheels.....	O	S
Full Wheel Covers.....	S	NA
Dual Outside Mirrors.....	S	Power
Side Protective Moulding.....	S	S
Front & Rear Mud flaps.....	S	S
Rear Window Wiper/Washer.....	S	S
Roof Rails.....	S	S
Rear Spoiler.....	O	S

<b>Safety Equipment</b>		
Dual Airbags*.....	S	S
Side Door Impact Beams.....	S	S
Child Safety Rear Door Locks.....	S	S

### Colours Available for 1998 Esteem Wagon



## 1998 ESTEEM SEDAN

<b>Engine</b> .....	16 valve, SOHC, inline 4 cylinder	
<b>Displacement</b> .....	1.6 litres	
<b>Horsepower</b> .....	95 @ 6,000 rpm	
<b>Torque (lb - ft)</b> .....	99 @ 3,000 rpm	
<b>Injection Type</b> .....	Electronic Fuel Injection (Multi-point)	
<b>Fuel Type</b> .....	Regular Unleaded	
<b>Transmission</b> .....	5 Speed Manual (GL) 4 Speed Automatic with Overdrive (GL/GLX)	
<b>Fuel Consumption</b>	<b>M/T</b>	<b>A/T</b>
City L/100km (mpg).....	8.1 (35)	8.4 (33)
Highway L/100km (mpg).....	6.0 (47)	6.2 (46)
<b>Dimensions - mm (inches)</b>		
Wheelbase.....	2,480 (97.6)	
Length.....	4,195 (165.2)	
Width.....	1,680 (66.1) 1,690 (66.5)	
Height.....	1,370 (53.9)	
<b>Capacities - litres (cu. ft.)</b>		
Passenger index.....	2,433 (85.9)	
Cargo volume index.....	340 (12.0)	
Fuel tank.....	51 litres	
<b>Weights - kg (lbs)</b>	<b>M/T</b>	<b>A/T</b>
Curb weight.....	1,010 (2,227)	1,020 (2,249)
Gross vehicle weight rating.....	1,460 (3,219)	
<b>Steering</b> .....	Power Assisted Rack & Pinion	
<b>Brakes</b>		
Front.....	Power Assisted Ventilated Disc	
Rear.....	Power Assisted Drum	
<b>Suspension</b> .....	Independent 4-wheel Macpherson Strut with Front Stabilizer Bar	
<b>Tires</b> .....	P175/70R13 P185/60R14	

	GL	GLX
<b>Interior Equipment</b>		
Air Conditioning.....	O	S
Variable Intermittent Wipers.....	S	S
Tachometer.....	NA	S
Trip Odometer.....	S	S
12 Volt Outlet.....	S	S
Shoulder Belts.....	S (Adjustable front)	S (Adjustable front)
Reclining Front Seats.....	S	S
Seat Back Pockets.....	NA	S
ETR AM/FM Stereo Cassette		
with 4 Speakers & Digital Clock.....	O	S
Power Windows.....	NA	S
Power Door Locks.....	NA	S
Full Centre Console.....	S	S
Front Door Pockets.....	S	S
Remote Fuel Lid Release.....	S	S
Remote Trunk Release.....	S	S
Electric Rear Defroster.....	S	S

<b>Exterior Equipment</b>		
Aluminum Alloy Wheels.....	O	O
Full Wheel Covers.....	S	S
Dual Outside Mirrors.....	S	Power
Side Protective Moulding.....	NA	S
Front & Rear Mud flaps.....	O	S

<b>Safety Equipment</b>		
Dual Airbags*.....	S	S
Side Door Impact Beams.....	S	S
Child Safety Rear Door Locks.....	S	S

### Colours Available for 1998 Esteem Sedan





# SPECIFICATIONS

## 1998 SIDEKICK SPORT 4X4

<b>Engine</b> .....	16 valve, DOHC, inline 4 cylinder
<b>Displacement</b> .....	1.8 litres
<b>Horsepower</b> .....	120 @ 6,500 rpm
<b>Torque (lb - ft)</b> .....	114 @ 3,500 rpm
<b>Injection Type</b> .....	Electronic Fuel Injection (Multi-Point)
<b>Fuel Type</b> .....	Regular Unleaded
<b>Transmission</b> .....	5 Speed Manual (JX) 4 Speed Automatic with Overdrive (JX/JLX)
<b>Fuel Consumption</b>	<b>M/T</b> <b>A/T</b>
City L/100km (mpg).....	10.5 (27) 10.7 (26)
Highway L/100km (mpg).....	8.6 (33) 8.6 (33)

### Dimensions - mm (inches)

Wheelbase.....	2,480 (97.6)
Length.....	4,125 (162.4)
Width.....	1,695 (66.7)
Height.....	1,685 (66.3)

### Capacities - litres (cu. ft.)

Passenger index.....	2,438 (86.1)
Cargo volume index.....	1,274 (45.0)
Fuel tank.....	70 litres
Towing Capacity.....	680 kg (1,500 lbs)

<b>Weights - kg (lbs)</b>	<b>M/T</b> <b>A/T</b>
Curb weight.....	1,340 (2,954) 1,360 (2,998)
Gross vehicle weight rating.....	1,670 (3,682)

**Steering**.....Power Assisted Ball & Nut

### Brakes

Front.....	Power Assisted Ventilated Disc
Rear.....	Power Assisted Drum

### Suspension

Front.....	Macpherson Strut
Rear.....	Rigid Axle with Lower Trailing Arm & Upper "A" Arm

**Tires**.....P215/65R16

<b>Interior Equipment</b>	<b>JX</b> <b>JLX</b>
---------------------------	----------------------

Air Conditioning.....	O	S
Intermittent Wipers.....	S	S
Tachometer.....	S	S
12 Volt Outlet.....	S	S
Reclining Front Seats.....	S	S
Power Windows.....	S	S
Power Door Locks.....	S	S
Cruise Control.....	NA	S
ETR AM/FM Stereo Cassette with 4 Speakers & Digital Clock.....	S	O
ETR AM/FM Stereo CD Player with 4 Speakers & Digital Clock.....	O	S
Map Lights.....	NA	S
Split Folding Rear Seats.....	S	S
Cup Holders.....	S	S
Full Centre Console.....	S	S
Locking Glove Box.....	S	S
Electric Rear Defroster.....	S	S
Remote Fuel Lid Release.....	S	S
Front Door Pockets.....	S	S

### Exterior Equipment

Free Wheeling Hubs.....	Manual	Automatic
Aluminum Alloy Wheels.....	O	S
Rear Window Wiper/Washer.....	S	S
Front/Rear Mud flaps.....	O	S
Dual Outside Mirrors.....	S	Power

### Safety Equipment

Dual Airbags*.....	S	S
Side Door Impact Beams.....	S	S
Child Safety Rear Door Locks.....	S	S
4-Wheel Anti-Lock Brake System.....	S	S

### Colours Available for 1998 Sidekick Sport



Superior White



Saturn Black Metallic



Radiant Red Mica



Scuba Blue Metallic



British Green Metallic

## 1998 SIDEKICK 2-DOOR 4X4

<b>Engine</b> .....	16 valve, SOHC, inline 4 cylinder
<b>Displacement</b> .....	1.6 litres
<b>Horsepower</b> .....	95 @ 5,600 rpm
<b>Torque (lb - ft)</b> .....	98 @ 4,000 rpm
<b>Injection Type</b> .....	Electronic Fuel Injection (Multi-Point)
<b>Fuel Type</b> .....	Regular Unleaded
<b>Transmission</b> .....	5 Speed Manual.....3 Speed Automatic
<b>Fuel Consumption</b>	<b>M/T</b> <b>A/T</b>
City L/100km (mpg).....	10.1 (28) 10.5 (27)
Highway L/100km (mpg).....	8.1 (35) 8.9 (32)

### Dimensions - mm (inches)

Wheelbase.....	2,200 (86.6)
Length.....	3,650 (143.7)
Width.....	1,655 (65.2)
Height.....	1,654 (65.1)

### Capacities - litres (cu. ft.)

Passenger index.....	2,398 (84.7)
Cargo volume index.....	932 (32.9)
Fuel tank.....	42 litres
Towing Capacity.....	450 kg (1,000 lbs)

<b>Weights - kg (lbs)</b>	<b>M/T</b> <b>A/T</b>
Curb weight.....	1,125 (2,480) 1,150 (2,535)
Gross vehicle weight rating.....	1,500 (3,307)

**Steering**.....Power Assisted Ball & Nut

### Brakes

Front.....	Power Assisted Solid Disc
Rear.....	Power Assisted Drum

### Suspension

Front.....	Macpherson Strut
Rear.....	Rigid Axle with Lower Trailing Arm & Upper "A" Arm

**Tires**.....P205/75R15

### Interior Equipment

Air Conditioning.....	O
Intermittent Wipers.....	S
Tachometer.....	S
12 Volt Outlet.....	S
Reclining Front Seats.....	S
ETR AM/FM Stereo Cassette with 4 Speakers & Digital Clock.....	O
Fold Down Rear Seat.....	S
Cup Holders.....	S
Full Centre Console.....	S
Locking Glove Box.....	S
Front Door Pockets.....	S

### Exterior Equipment

Free Wheeling Hubs.....	Manual
Aluminum Alloy Wheels.....	O
Raised White Letter Tires.....	S
Dual Outside Mirrors.....	S

### Safety Equipment

Dual Airbags*.....	S
Side Door Impact Beams.....	S

### Colours Available for 1998 Sidekick 2-Door



Superior White



Jet Black



Toreador Red Metallic



Medium Blue Metallic



Envision Green



Purple Graphite Metallic



## 1998 SWIFT HATCHBACK

<b>Engine</b> .....	16 valve, SOHC, inline 4 cylinder	
<b>Displacement</b> .....	1.3 litres	
<b>Horsepower</b> .....	79 @ 6,000 rpm	
<b>Torque (lb - ft)</b> .....	75 @ 3,000 rpm	
<b>Injection Type</b> .....	Electronic Fuel Injection (multi-point)	
<b>Fuel Type</b> .....	Regular Unleaded	
<b>Transmission</b> .....	5 Speed Manual	3 Speed Automatic
<b>Fuel Consumption</b>	<b>M/T</b>	<b>A/T</b>
City L/100km (mpg).....	6.4 (44)	7.8 (36)
Highway L/100km (mpg).....	4.9 (58)	6.2 (45)
<b>Dimensions - mm (inches)</b>		
Wheelbase.....	2,365 (93.1)	
Length.....	3,795 (149.4)	
Width.....	1,590 (62.6)	
Height.....	1,390 (54.7)	
<b>Capacities - litres (cu. ft.)</b>		
Passenger index.....	2,191 (77.4)	
Cargo volume index.....	238 (8.4)	
Fuel tank.....	39 litres	
<b>Weights - kg (lbs)</b>	<b>M/T</b>	<b>A/T</b>
Curb weight.....	860 (1,895)	875 (1,929)
Gross vehicle weight rating.....	1,190 (2,624)	
<b>Steering</b> .....	Manual Rack & Pinion	
<b>Brakes</b>		
Front.....	Power Assisted Ventilated Disc	
Rear.....	Power Assisted Drum	
<b>Suspension</b>		
Front.....	Independent MacPherson Strut with Stabilizer	
Rear.....	Independent MacPherson Strut with Stabilizer	
<b>Tires</b> .....	P155 / 80R13	
<b>Interior Equipment</b>		
Air Conditioning.....	O	
Intermittent Wipers.....	S	
Trip Odometer.....	S	
12 Volt Outlet.....	S	
Shoulder Belts.....	Front & Rear	
Reclining Front Seats.....	S	
ETR AM/FM Stereo Cassette with 4 Speakers & Digital Clock.....	O	
Fold-Down Rear Seat.....	One Piece	
Cup Holders.....	S	
Full Centre Console.....	S	
Front Door Pockets.....	S	
Electric Rear Defroster.....	S	
Rear Parcel Shelf.....	S	
<b>Exterior Equipment</b>		
Aluminum Alloy Wheels.....	O	
Full Wheel Covers.....	S	
Dual Outside Mirrors.....	S	
Side Protective Moulding.....	S	
Rear Window Wiper/Washer.....	S	
<b>Safety Equipment</b>		
Dual Airbags*.....	S	
Side Door Impact Beams.....	S	

### Colours Available for 1998 Swift Hatchback



Superior White



Jet Black



Victory Red



Medium Blue Metallic



Envision Green



Purple Graphite Metallic



Aragon Gold Metallic

## 1998 SIDEKICK 4-DOOR 4X4

<b>Engine</b> .....	16-valve, SOHC, inline 4 cylinder	
<b>Displacement</b> .....	1.6 litres	
<b>Horsepower</b> .....	95 @ 5,600 rpm	
<b>Torque (lb - ft)</b> .....	98 @ 4,000 rpm	
<b>Injection Type</b> .....	Electronic Fuel Injection (Multi-Point)	
<b>Fuel Type</b> .....	Regular Unleaded	
<b>Transmission</b> .....	5 Speed Manual	4 Speed Automatic with Overdrive
<b>Fuel Consumption</b>	<b>M/T</b>	<b>A/T</b>
City L/100km (mpg).....	10.1 (28)	10.5 (27)
Highway L/100km (mpg).....	8.2 (35)	8.2 (35)
<b>Dimensions - mm (inches)</b>		
Wheelbase.....	2,480 (97.6)	
Length.....	4,030 (158.7)	
Width.....	1,635 (64.4)	
Height.....	1,690 (66.5)	
<b>Capacities - litres (cu. ft.)</b>		
Passenger index.....	2,523 (89.1)	
Cargo volume index.....	1,274 (45.0)	
Fuel tank.....	55 litres	
Towing Capacity.....	680 kg (1,500 lbs)	
<b>Weights - kg (lbs)</b>	<b>M/T</b>	<b>A/T</b>
Curb weight.....	1,250 (2,756)	1,280 (2,822)
Gross vehicle weight rating.....	1,600 (3,527)	
<b>Steering</b> .....	Power Assisted Ball & Nut	
<b>Brakes</b>		
Front.....	Power Assisted Ventilated Disc	
Rear.....	Power Assisted Drum	
<b>Suspension</b>		
Front.....	Macpherson Strut	
Rear.....	Rigid Axle with Lower Trailing Arm & Upper "A" Arm	
<b>Tires</b> .....	P205/75R15	
<b>Interior Equipment</b>		
Air Conditioning.....	O	
Intermittent Wipers.....	S	
Tachometer.....	S	
12 Volt Outlet.....	S	
Reclining Front Seats.....	S	
Power Steering.....	S	
ETR AM/FM Stereo Cassette with 4 Speakers & Digital Clock.....	O	
Split Folding Rear Seats.....	S	
Cup Holders.....	S	
Full Centre Console.....	S	
Locking Glove Box.....	S	
Electric Rear Defroster.....	S	
Front Door Pockets.....	S	
<b>Exterior Equipment</b>		
Free Wheeling Hubs.....	Manual	
Aluminum Alloy Wheels.....	O	
Rear Window Wiper/Washer.....	S	
Dual Outside Mirrors.....	S	
<b>Safety Equipment</b>		
Dual Airbags*.....	S	
Side Door Impact Beams.....	S	
Child Safety Rear Door Locks.....	S	

### Colours Available for 1998 Sidekick 4-Door



Superior White



Jet Black



Toreador Red Metallic



Envision Green



Purple Graphite Metallic



Subtle Grey



# SPECIFICATIONS

## 1998 X-90 4X4

<b>Engine</b> .....	16-valve, SOHC, inline 4 cylinder	
<b>Displacement</b> .....	1.6 litres	
<b>Horsepower</b> .....	95 @ 5,600 rpm	
<b>Torque (lb - ft)</b> .....	98 @ 4,000 rpm	
<b>Injection Type</b> .....	Electronic Fuel Injection (Multi-Point)	
<b>Fuel Type</b> .....	Regular Unleaded	
<b>Transmission</b> .....	5 Speed Manual	4 Speed Automatic with Overdrive
<b>Fuel Consumption</b> .....	<b>M/T</b>	<b>A/T</b>
City L/100km (mpg) .....	9.4 (30)	9.9 (28)
Highway L/100km (mpg) .....	7.4 (38)	7.6 (37)
<b>Dimensions - mm (inches)</b>		
Wheelbase .....	2,200 (86.6)	
Length .....	3,710 (146.1)	
Width .....	1,695 (66.7)	
Height .....	1,537 (60.5)	
<b>Capacities - litres (cu. ft.)</b>		
Passenger index .....	1,149 (40.6)	
Cargo volume index .....	237 (8.4)	
Fuel tank .....	42 litres	
Towing Capacity .....	450 kg (1,000 lbs)	
<b>Weights - kg (lbs)</b>	<b>M/T</b>	<b>A/T</b>
Curb weight .....	1,120 (2,469)	1,145 (2,524)
Gross vehicle weight rating .....	1,340 (2,954)	
<b>Steering</b> .....	Power Assisted Ball & Nut	
<b>Brakes</b>		
Front .....	Power Assisted Solid Disc	
Rear .....	Power Assisted Drum	
<b>Suspension</b>		
Front .....	Macpherson Strut	
Rear .....	Rigid Axle with Lower Trailing Arm & Upper "A" Arm	
<b>Tires</b> .....	P195/65R15	
<b>Interior Equipment</b>		
Air Conditioning .....	O	
Intermittent Wipers .....	S	
Tachometer .....	S	
12 Volt Outlet .....	S	
Electric Rear Defroster .....	S	
Power Windows .....	S	
Power Door Locks .....	S	
Cruise Control .....	S	
Reclining Front Seats .....	S	
ETR AM/FM Stereo Cassette		
with 4 Speakers & Digital Clock .....	S	
Cup Holders .....	S	
Full Centre Console .....	S	
Locking Glove Box .....	S	
<b>Exterior Equipment</b>		
Free Wheeling Hubs .....	Automatic	
Aluminum Alloy Wheels .....	S	
Dual Outside Mirrors .....	S	
Rear Spoiler .....	S	
Locking Fuel Door .....	S	
<b>Safety Equipment</b>		
Dual Airbags** .....	S	
Side Door Impact Beams .....	S	
4-Wheel Anti-Lock Brake System .....	S	

### Colours Available for 1998 X-90



Saturn Black Metallic



Antares Red



Miami Blue Metallic



Mercury Silver Metallic

## ACCESSORIES

When you purchase Suzuki accessories, you're guaranteed a high quality, competitively priced product that has been specifically designed for your vehicle. So, go ahead and customize your Suzuki ... express yourself! After all, you and your Suzuki deserve nothing less.

## PARTS AND SERVICE

Suzuki Parts and Service have been satisfying even the most demanding of customers for over 17 years. We're proud of the high standard of our quality products and reputable service. Service that you can depend on. Nation-wide, our dealers are there to make sure that your vehicle gets the best possible care. Our highly trained technicians know your vehicle inside out. Be sure to insist on Genuine Suzuki Parts, then you know you're getting great value without compromising quality.

*In addition to the best service,  
we give you the best parts. Suzuki Genuine.*



## SUZUKI CANADA CREDIT

Now everything you need to finance your Suzuki—including knowledgeable and courteous staff—is available at your dealership. Ask your dealer for details, because it's never been easier to buy or lease a Suzuki.



## SUZUKI LEASE

Interested in a new Suzuki as often as every two years? Then the Suzuki Lease may be for you. With a Suzuki Lease, you pay for the length of time you drive—which can make driving financially convenient. Pick from a range of leasing arrangements with little or no down payments. Your monthly Suzuki Lease payments can be significantly less than the retail finance payment for the same vehicle. When your lease is up, you can buy your Suzuki outright or get behind the wheel of a brand new one.

## ROADSIDE ASSISTANCE PLAN

Anywhere in Canada and the continental U.S.A., you and your Suzuki are safe. If you run into trouble, just call our toll free number and you'll be connected to a bilingual Suzuki Secure counsellor who will give you the help you need. Your Suzuki will, if necessary, be towed free of charge (up to 30 km) to the nearest Suzuki Dealer or CAA/AAA approved service centre—24 hours a day, 365 days a year. You're covered for 3 Year/80,000 km.

## SUZUKI NEW VEHICLE WARRANTY

When you purchase a Suzuki, you're covered by a 3 Year/80,000 km zero-deductible, fully-transferrable warranty. If any parts should fail due to defects in manufacturing or installation, they will be repaired or replaced free of charge. At no cost to you. It's our way of making sure you hit the road with confidence.

Suzuki, Swift, Esteem, X-90, and Sidekick are registered trademarks of Suzuki Motor Corporation of Japan. Suzuki Motor Corporation of Japan and Suzuki Canada Inc. reserve the right to change, without notice, equipment specifications, colours and materials. Each model may be discontinued without notice. Please inquire at your local dealer for details of any such changes. Some items appearing in photographs may be optional at extra cost. Sidekick is a multi-purpose vehicle which will handle and maneuver differently from all ordinary passenger cars, in driving conditions which may occur on streets, highways and off-road. Avoid sharp turns and abrupt maneuvers. You should read driving guidelines and instructions in the owner's manual, wear your seat belt at all times, and please don't drink and drive. X-90 roof panels are not designed to hold occupants inside the vehicle, or to protect against the intrusion of foreign objects in the event of an accident. Wear your seat belt at all times. \*To avoid injury from an inflating air bag: always place children 12 years old and under in the rear seat; always move both driver and passenger seats as far back from air bag as practical; never transport a child in a rear-facing child seat in the front seat; always use the seat belts and buckle up properly. \*\*To avoid injury from an inflating air bag: we strongly recommend that you not let a child 12 years old and under ride in the X-90; always move both driver and passenger seats as far back from air bag as practical; never transport a child in a rear-facing child seat in the X-90; always use the seat belts and buckle up properly.







For a Suzuki Dealer near you, call 1-800-264-4619