

## 2 DOOR SIDEKICK® 4x4

- 80 h.p. 1.6 litre single overhead cam engine • Electronic fuel injection
- 5 speed manual or 3 speed automatic transmission
- Rear wheel anti-lock brake system • Manual free wheeling hubs



## SAMURAI® 4x4

- 66 h.p. 1.3 litre electronically fuel injected engine • Single overhead cam
- Power front disc brakes • 5 speed transmission
- Dual speed transfer case

## SUZUKI—A HISTORY OF PERFORMANCE.

From the beginning, the history of Suzuki has been one of human determination. In 1909, Michio Suzuki established the Suzuki Loom Works in order to manufacture a more productive loom. Today, Suzuki Motor Corporation employs 13,000 employees and operates 38 assembly plants around the world. The products we sell range from passenger cars and 4-wheel drive sport/utility vehicles

to motorcycles, all-terrain vehicles, and outboard motors.

And while there may seem to be a vast distance between Suzuki's origins and where the company is today, the connection is a close one because the guiding philosophy has remained the same: produce a better quality product and success will follow.

Suzuki has always started by asking what people need. We then employ technology

and breakthrough engineering to satisfy our customers with value-packed products at competitive prices.

But this product is only the first link in Suzuki's unique chain of customer satisfaction. Suzuki is committed to supplying knowledgeable and friendly service to ensure a positive relationship between our customers and our dealers.

It's been a remarkable performance so far.

## THE SUZUKI WARRANTY

Every 1992 Suzuki enjoys a 3 year/80,000 km, bumper-to-bumper, transferable, zero deductible limited warranty. Please see your Authorized Suzuki Dealer for full details. Suzuki, Swift, Sidekick and Samurai are registered trademarks of Suzuki Motor Corporation of Japan. Suzuki

Motor Corporation of Japan and Suzuki Canada Inc. reserve the right to change, without notice, equipment, specifications, colours, and materials.

Each model may be discontinued without notice. Please inquire at your local dealer for details of any such changes. Some items

appearing in photographs may be optional at extra cost.

Please be advised that Suzuki 4x4's handle and manoeuvre differently than a conventional passenger car. Avoid sharp turns and abrupt manoeuvres and always wear your seat belt. For specific information, read your owner's manual.



THE WHEELS ARE TURNING

# SUZUKI 1992

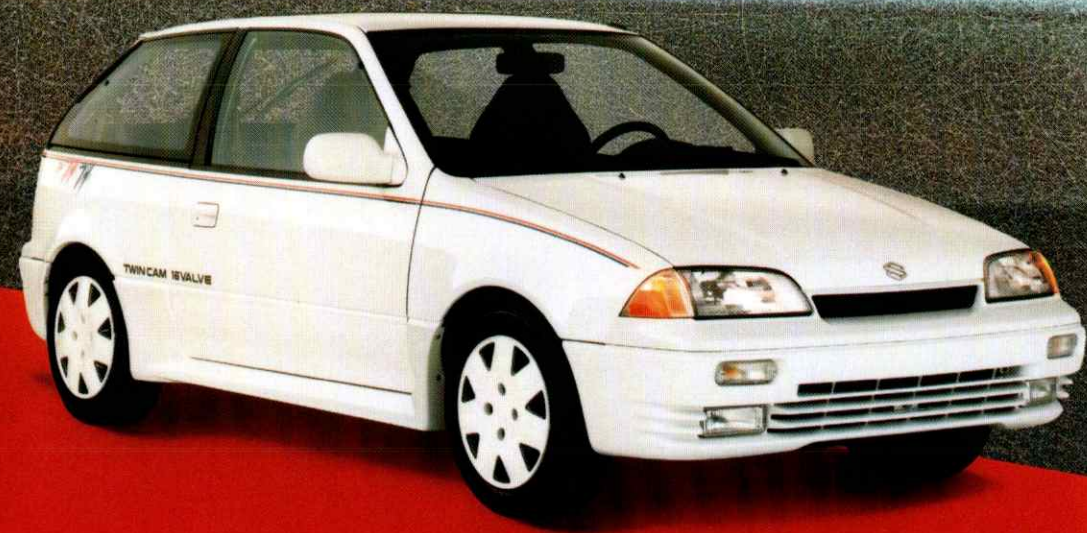






## SWIFT® SEDAN

- New 92 h.p. 1.6 litre, 16 valve engine (GL, GLX)
- New "European" suspension (GL, GLX) • Front wheel drive
- Tinted glass/reclining bucket seats • Child proof door locks



## SWIFT® GT

- 16 valves, twin overhead cams • 100 h.p. with multi-point fuel injection
- 4 wheel power assisted disc brakes • Ground effects package
- 0.32 Drag coefficient



## SWIFT® HATCHBACK

- 4 cylinder S.O.H.C. engine • 2 speed and intermittent wipers
- Rear wiper/washer • Electric rear defroster
- 55 m.p.g. highway



## 4 DOOR SIDEKICK® 4x4

- New 95 h.p. 1.6 litre, 16 valve overhead cam engine with electronic fuel injection
- Rear wheel anti-lock brake system
- 4 speed automatic transmission with overdrive and power mode • 35 m.p.g. highway