



Alto Automatic





4 Door Alto Automatic

Two speed fully automatic operation with kick down for rapid acceleration. High performance 4-stroke, watercooled OHC engine front wheel drive specially developed by Suzuki. Easy access 4 door convenience with roomy interior for extra comfort, and full reclining front seats with head restraints.

Rear storage space can be increased using split rear seats, which can be folded down separately and easily accessible through a hatchback rear window.

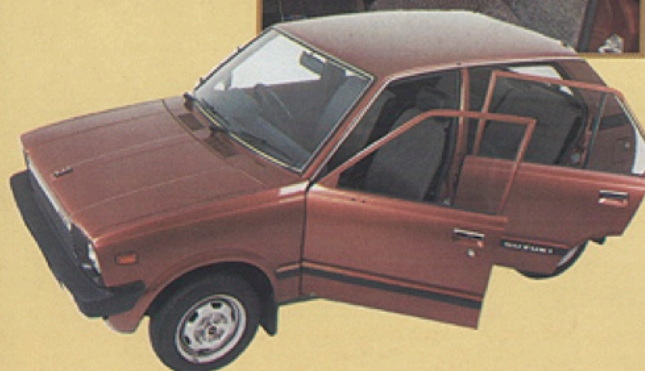
A full functional instrument panel with large easy to read fully illuminated meters including AM radio as standard.

The Alto Automatic has been engineered to ensure comfortable and safe driving with the minimum of fuss.



Radial ply tyres plus a dual braking system for added safety.

Other features include: child safety locks, 3 speed fan for fresh and recirculating heating, 2 speed and intermittent wipers with electric washers, full carpeting, cigarette lighter, lockable petrol cap and heated rear window.



ALTO Automatic Specifications

overall length	3295 mm (129.7 in)
overall width	1415 mm (55.7 in)
overall height	1340 mm (52.7 in)
wheelbase	2150 mm (84.6 in)
curb weight	628 kg (1384 lbs)
seating capacity	4 persons
engine type	4 stroke cycle, watercooled, single OHC
No. of cylinders	3
piston displacement	796 cm ³ (48.6 cu.in)
max. horsepower	39.5 BHP (29.42 KW) at 5,500 rpm (SAE NET)
max. torque	43.4 lb/ft (59.0Nm) at 3,000 rpm (SAE NET)
transmission type	Automatic with planetary gear
Tyre size (front & rear)	145/70 SR12
turning radius	4.4 m (14.4 ft)
steering type	rack and pinion
brake system front	disc
rear	drum
fuel tank	5.9 imp gals/27 litres
engine oil	4.4 imp pints/2.5 litres

Government fuel consumption: urban cycle 38.8 mpg; constant 56mph 49.7 mpg

The information in this brochure was accurate at the date of going to print. The company, however, reserve the right, while preserving the essential characteristics of the models described and illustrated to introduce at any time modifications, changes of details, equipment or accessories as may be considered necessary to improve the models described or for any other reason of a construction or operational nature. Every endeavour will be made to bring the brochure up-to-date, from time to time but, in order to avoid any misunderstanding, any person interested should enquire of the company (or their Dealers) as to whether there have been any material alterations since the date of issue of this brochure.



A Heron Corporation Company
Suzuki G.B. (CAR5) Ltd, Gatwick Road, Crawley, West Sussex

Contact your nearest dealer
for a test drive

See the full range of genuine accessories on display at your local dealer.