



Way of Life!

THE NEW SUZUKI BALENO

EXPERIENCE THE DRIVE



EXPERIENCE THE **BALENO**



Say hello to the new Suzuki Baleno, the practical hatchback that's also a joy to drive. Thanks to our new Boosterjet turbocharged engine, you enjoy maximum performance whilst maintaining great fuel efficiency.

Even though it's a compact hatchback, it's a roomy one, boasting a remarkably spacious interior. Plus it comes packed full of features, including satellite navigation and air conditioning as standard.

Now it's time to experience the Baleno.

INTRODUCING *BOOSTERJET*

One of the most unexpected things about the Baleno is that it's an efficient hatchback that drives like a dream. However, once you take a peek under the bonnet, it's easy to understand why.

The Boosterjet turbocharged engine gives you maximum performance whilst maintaining great fuel efficiency. Plus, with the Baleno's impressive power, torque and really light body, you're guaranteed a powerful yet nimble performance behind the wheel. So you can experience the joy of the drive for even longer.

The Baleno 1.0-litre Boosterjet is available with both 5-speed manual and 6-speed automatic transmission options.



STYLISH GOOD LOOKS

With its stylish design and practical touches, the Baleno is the perfect combination of form and function. Take a look and see what it's got.

- Dynamically flowing curves
- LED daytime running lights
- HID headlights
- Rear upper spoiler
- Low and wide stance for outstanding stability



*SZ5 model only.



SPACE AND COMFORT

It may be a compact hatchback, but the Baleno has plenty of room on the inside. So if you're looking for a little extra legroom, or if you need some extra space for all your shopping and luggage, then the Baleno has everything you need.

- Plenty of luggage space (320-litres)
- Lots of legroom for passengers
- Centre console box with armrest*
- Excellent head and shoulder room for both front passengers
- Easy entry to the rear seats thanks to a wide opening space
- Flexible boot space including removable double floor, 60:40 split folding rear seats and clever storage compartments



*SZ5 model only.

MORE TO ENJOY



The Baleno is equipped with all the latest technology, so you can be sure of a drive that's both comfortable and entertaining.

Take a look at all of the features you can enjoy:

- Satellite navigation
- Bluetooth handsfree phone connectivity
- DAB digital radio
- Apple CarPlay™ and MirrorLink connectivity*
- Air conditioning
- Advanced digital display with fuel efficiency, average speed, power, torque and more**
- A stylish and user-friendly instrument panel



*Connectivity depends on phone model and operating system. Contact your local Suzuki Dealer for more information. ** S25 model only.
Apple and CarPlay are trademarks of Apple Inc. registered in the U.S. and other countries. CarPlay is a trademark of Apple Inc.





SAFETY THAT REASSURES

When it comes to safety, we strive to make you feel protected. That's why the Baleno is equipped with state of the art safety features to help make you as safe as possible behind the wheel.

- **Radar Brake Support*** detects potential collisions and reacts by either alerting you or automatically applying the brakes
- **Adaptive Cruise Control*** measures the distance between you and the vehicle ahead and adapts your speed to maintain a pre-set following distance
- **Front, Side and Curtain Airbags** on the driver and passenger sides



*SZ5 model only.

CHOOSE YOUR COLOUR

The Baleno comes in a range of six striking colours, so take a look and find the one that's right for you.



Superior White



Fire Red



Premium Silver Metallic



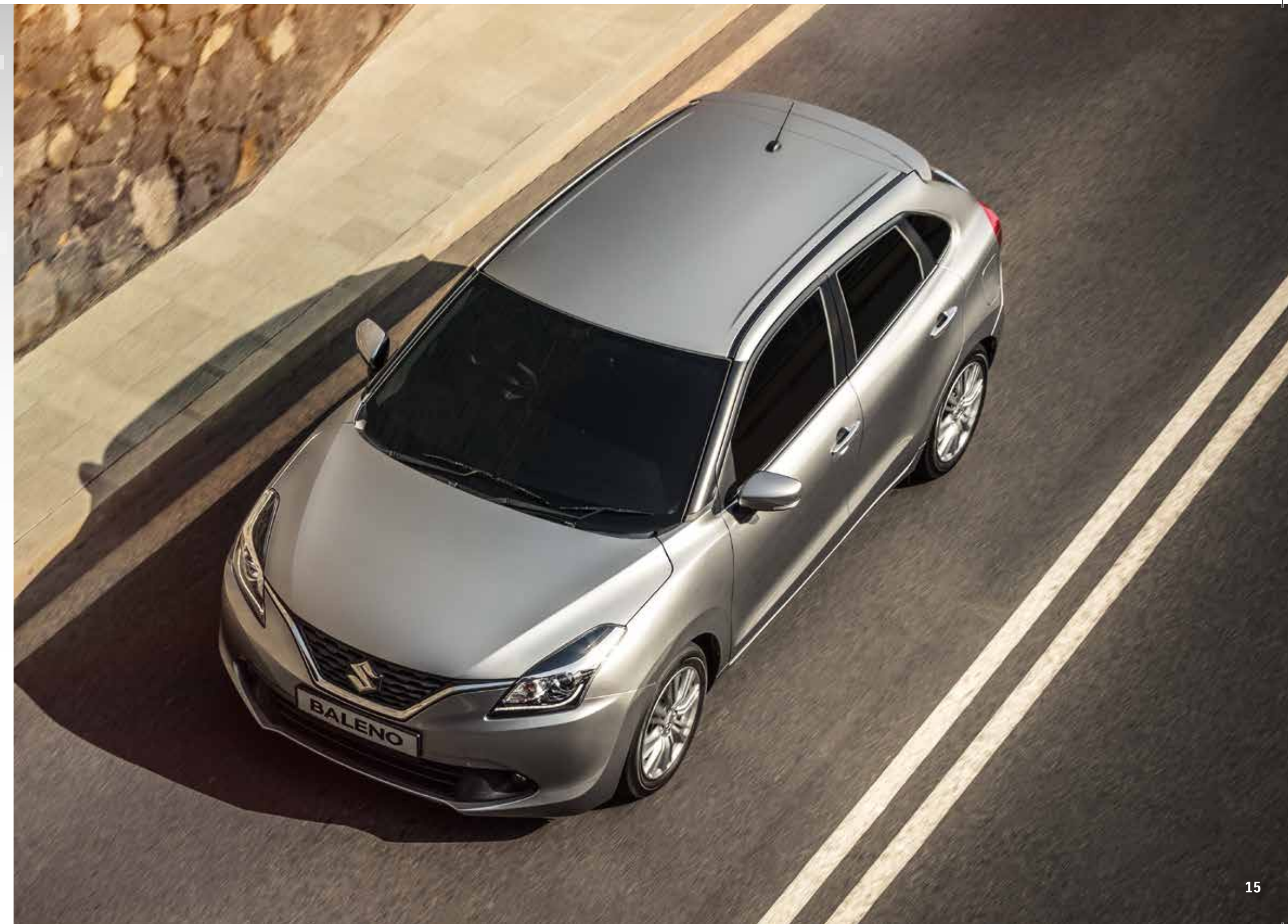
Ray Blue Metallic



Glistening Grey Metallic



Midnight Black Pearl



SEE THE DIFFERENCE

So, you've seen the Baleno and you know what it can do. Now's the time to pick the model that's made for you.



BALENO SZ-T

Here's what you get with the SZ-T:

- Front, side and curtain airbags
- HID headlights
- Rear privacy glass
- Leather steering wheel
- Front electric windows
- Manual air conditioning
- Bluetooth connectivity
- Satellite navigation
- DAB digital radio
- Reversing camera
- Front fog lights
- 16" alloy wheels

1.0 Boosterjet manual

BALENO SZ5

You already get this list of impressive features with the SZ-T:

- Front, side and curtain airbags
- HID headlights
- Rear privacy glass
- Leather steering wheel
- Front electric windows
- Bluetooth connectivity
- Satellite navigation
- DAB digital radio
- Reversing camera
- Front fog lights
- 16" alloy wheels

Now check out all the extra features you get with the SZ5:

- Automatic climate control
- Adaptive Cruise Control
- Radar Brake Support
- Rear electric windows
- Colour trip display
- LED rear lights

1.0 Boosterjet manual and 1.0 Boosterjet automatic

MAKE IT YOURS

STYLE PACK*

Get even more admiring glances wherever you go with this head-turning set of accessories:

- Wheel arch and side skirt
- Black and polished alloy wheels
- Chromed fog lamp trim set



*Model shown includes side body moulding set

Want to give your Baleno that personal touch? We'll have a look at our great range of stylish and practical extras and see how you can make the Baleno yours. To see the full range, visit suzuki.co.uk/cars/accessories

PROTECTION PACK

This tough set of accessories has everything you need to take care of you, and your new car:

- Front and rear flexible mudflap set
- Side body moulding set
- Bumper corner protection set



■ Black polished 'Journey' alloy wheels



■ Chromed fog lamp trim set



■ Flexible mud flap, front



■ Chromed rear hatch moulding
■ Rear parking sensor
■ Rear bumper protector sheet



■ Door sill trim set, aluminium



■ Side body moulding



■ Carpet mat set



■ Cargo tray

FINANCE
THAT FITS



Once you’ve found the perfect Suzuki for you, you’ll want to find an ideal finance package to go with it. There are a number of finance packages, so whatever your needs, you’ll be spoilt for choice.

- 1. Finance packages could be available from one to five years. We know you love choices that’s why we let you choose the period that works best for you.*
- 2. Fixed payments available^, allowing you to budget ahead and avoid any surprises.
- 3. You want flexibility? With Suzuki Finance Personal Contract Plan (PCP) you can have it. Set payment periods from 2-3.5 years (or 4 years on selected models), then take the best option for you when you reach the end of your agreement:
 - Why not part exchange the vehicle for a new one?^ This gives you the option of driving away a new car every two or three years.
 - You can return the vehicle and not pay the Final Lump Sum Payment***
 - Or why not pay the Final Lump Sum Payment in full to own the vehicle?
- 4. What’s more, you’ll be in good company. Suzuki Finance is part of Lloyds Banking Group.

We can help you find the finance deal that's right for you. Drop in to your local Dealer, pull up a chair and have a chat.

Maximum mileage restrictions may apply, speak to your Dealer for details. *One to five years not available on all finance products. ^Ask your Dealer for the latest rates and terms and conditions. **Subject to settlement of your existing finance agreement; new finance agreements are subject to status ***Subject to the vehicle being returned on time, in good condition (fair wear and tear accepted), within the permitted maximum mileage and all the required repayments having been made. Excess mileage charges apply.

Finance is available to persons aged 18 years or over, subject to status. New finance agreements are subject to status. Available to customers within the UK (excludes Channel Islands and Isle of Man). Suzuki Finance, part of Lloyds Banking Group, St. William House, Tresillian Terrace, Cardiff CF10 5BH

THE SUZUKI
SERVICE PROMISE

At Suzuki, we aim to give you the best possible service when you visit your Suzuki Dealer. Which is why we’ve created the Suzuki Service Promise.

We promise that every Suzuki customer will experience superior levels of care and leave impressed by the little extras we include as standard:

- Alternative transport options
- Simple and transparent pricing
- Only pre-approved work undertaken
- Suzuki trained technicians
- Suzuki Genuine Parts
- Progress report during the day
- Wash and vacuum with pre-booked work
- Vehicle health check on every visit
- Accident Aftercare

WARRANTY

Every new Baleno comes with a comprehensive 3 year or 60,000 mile warranty (whichever comes first) and a 12 year anti-perforation warranty.

ROADSIDE ASSISTANCE

We’re always around if you need roadside assistance. New cars come with one year Suzuki Assistance provided by the AA. The cover includes 24-hour roadside assistance, home start and recovery through UK and Europe.

TALK TO US

Our Suzuki Information Service could talk all day about your Suzuki. From the product range to services for drivers, they can fill you in on everything. So if you’ve got a question, just get in touch on 08085 011959 or at Suzuki GB PLC, Steinbeck Crescent, Snelshall West, Milton Keynes, Bucks MK4 4AE.



TECHNICAL SPECIFICATIONS

MODEL			1.0 BOOSTERJET	
Available Grades			Manual: SZ-T, SZ5 Automatic: SZ5	
Engine	Type		K10C Direct Injection Turbo	
	Number of cylinders		3	
	Number of valves		12	
	Piston displacement	cm³	998	
	Maximum output	PS (kW) / rpm	111 (82) / 5,500	
	Maximum torque	Nm (lbft) / rpm	Manual: 170 (125) / 2,000-3,500 Automatic: 160 (118) / 1,500-4,000	
	Fuel distribution		Direct Injection	
	EU emission standard		Euro 6	
Transmission	Type		5-speed manual	6-speed automatic
	Gear ratio	1st	3.545	4.667
		2nd	1.904	2.533
		3rd	1.233	1.556
		4th	0.885	1.135
		5th	0.690	0.859
		6th	-	0.686
		Reverse	3.250	3.394
	Final gear ratio		3.944	3.502
Weights and Dimensions	Tyres		185/55 R16	
	Overall length	mm	3,995	
	Overall width	mm	1,745	
	Overall height	mm	1,470	
	Wheelbase	mm	2,520	
	Minimum turning circle	m	9.8	
	Ground clearance	mm	120	
	Seating capacity	Persons	5	
	Luggage capacity Max. volume	litres	1,085	
	Luggage capacity (seatback folded, VDA)	litres	756	
	Luggage capacity (seatback raised, VDA)	litres	320	
	Kerb weight inc full options	kg	950	980
	Gross vehicle weight	kg	1,430	
	Max towing weight (braked)	kg	1,000	
	Max towing weight (un-braked)	kg	400	
Performance and Economy	Maximum speed	mph	124	118
	0-62 mph	seconds	11.4	11.0
	Fuel tank capacity	litres	37	
	CO ₂ emissions	g/km	105	115
	Urban	mpg (l/100km)	52.3 (5.4)	44.8 (6.3)
	Extra-Urban	mpg (l/100km)	70.6 (4.0)	68.8 (4.1)
	Combined	mpg (l/100km)	62.7 (4.5)	57.6 (4.9)

Fuel consumption figures are based on an EU test for comparative purposes only and may not reflect real driving results

EQUIPMENT

CATEGORY	DESCRIPTION	SZ-T	SZ5
Safety	ABS with EBD function	●	●
	ESP® (Electronic Stability Program)*		●
	Radar Brake Support	Option	●
	Hill hold control (automatic transmission only)		●
	Brake assist function	●	●
	TPMS (tyre pressure monitoring system)	●	●
	SRS front dual airbags	●	●
	SRS side airbags	●	●
	SRS curtain airbags	●	●
	Front passenger airbag deactivation system	●	●
	Front 3-point ELR seatbelts with pretensioners, force limiters and shoulder height adjusters	●	●
	Rear 3-point ELR seatbelts with pretensioners & force limiters x2, 3-point ELR seatbelt for centre seat	●	●
	ISOFIX child seat anchorages	●	●
	Child seat tether anchorages	●	●
	Childproof rear door locks	●	●
	Emergency flat tyre repair kit	●	●
Security	Immobiliser	●	●
	Deadlocks	●	●
	Freewheeling key cylinders	●	●
	Remote central door locking	●	●
	High-mount stop lamp	●	●
Comfort and Convenience	Adaptive cruise control		●
	Keyless entry with engine start button		●
	Cabin lights	●	●
	Front sun visor with vanity mirror & ticket holder	●	●
	Electric front windows	●	●
	Electric rear windows		●
	Assist grips	●	●
	Shift knob black with chrome/silver accent	●	●
	Driver's side foot rest	●	●
	Remote fuel lid opener	●	●
	Fabric door trim insert front	●	●
	Fabric door trim insert rear		●
	Chrome inside door handles	●	●
	Fabric seat upholstery	●	●
	4.2-inch colour LCD display		●
	3-spoke leather covered steering wheel	●	●
	Tilt-adjustable steering wheel	●	
	Tilt and telescopic adjustable steering wheel		●
	Tachometer	●	●
	Gear shift indicator	●	●
	Digital clock	●	●
	Outside temperature display	●	●
	Fuel consumption display (average/instantaneous) and range display	●	●
	12V accessory socket	●	●
	Paddle Shift (automatic only)		●

CATEGORY	DESCRIPTION	SZ-T	SZ5
Heating and Visibility	Automatic air conditioning		●
	Manual air conditioning	●	
	Pollen filter		●
	HID projector headlamps	●	●
	Guide me home light function	●	●
	LED daytime running lights	●	●
	Automatic headlamps	●	●
	Front fog lamps	●	●
	Rear combination lamps standard	●	
	Rear combination lamps high		●
	Green-tinted windows	●	●
	Rear privacy glass	●	●
	Electrically adjustable, heated door mirrors	●	●
Storage	Cup holders front x2	●	●
	Cup holders rear x1	●	
	Bottle holders	●	●
	Centre console box	●	
	Centre console box with armrest		●
	Centre-lower box	●	●
	Luggage area cover	●	●
	Luggage area board	●	●
	Luggage area light	●	●
	Storage pockets front doors	●	●
Entertainment and communication	Smartphone linkage display audio	●	●
	Navigation system	●	●
	USB and AUX connectors	●	●
	DAB digital radio	●	●
	4 speakers & 2 tweeters	●	●
	Bluetooth integrated into audio unit	●	●
Styling	16" Alloy wheels	●	●
	Front grille black with chrome accent	●	●
	Outside door handles body coloured	●	
	Outside door handles chrome		●
	Door mirrors with built-in turn signal lamp		●
	Black coloured A & B pillars	●	●
	Chrome beltline mouldings		●
	Roof-end spoiler	●	●
	Tailgate trim (chromed)	●	●

*ESP® is a registered trademark of Daimler AG

BALENO MEETS DRIVER

Interested in finding out more about the new Baleno?
Contact your local Dealer or visit our website today to book a test drive.
www.suzuki.co.uk/cars/baleno



Specifications shown have been achieved by production models under standard operating conditions. Data is intended to describe vehicles and their performance fairly, but may not apply to every vehicle. Colours, specifications and equipment may vary without notice. All details correct at time of going to press: May 2016. Vehicles shown throughout this brochure are for illustration only and may feature non-UK equipment. Suzuki GB PLC, Steinbeck Crescent, Snelshall West, Milton Keynes, Bucks MK4 4AE. Suzuki Information Service: 0808 501 1959 (calls may be recorded or monitored)