

# VITARA



Way of Life!



**MOST SATISFIED CUSTOMERS**  
CARS - 2015



**THE COMPACT SUV. REINVENTED.**











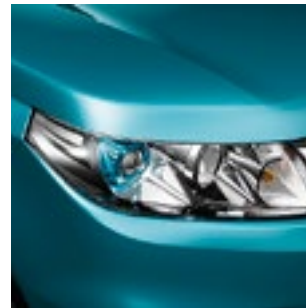




## In a class of its own

When Suzuki launched the Vitara in 1988, there was quite simply, nothing else like it. For the first time, here was a vehicle with outstanding off-road performance and the ease-of-use in everyday life. It's hard to imagine that almost 30 years ago, they had to create a whole new category for the Vitara – the Compact SUV.

Now, the all new Vitara is poised to innovate again, just as it did all those years ago. Suzuki, the brand that invented the Compact SUV, has now completely RE-INVENTED it.











## Refining the space

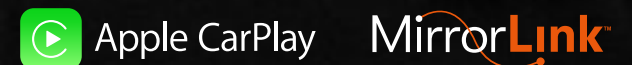
The clean design and elegant lines of the generously proportioned interior evoke a modern, luxurious sense of calm. This is accentuated by the panoramic sunroof which floods the interior with natural light and creates an even greater sense of spaciousness (LTD).

Fabrics and materials have been carefully selected for comfort, practicality, and style. Plus choose from a range of selectable colour-keyed trim details and customise the interior to your own taste. Roomy and flexible, the new Vitara offers a generous 375 litres of luggage space for your travel, sporting, business or family needs. The 60:40 folding seating options make it easy to accommodate large items.



## Understated, practical, elegant

Elegant lines flow into subtle curves, silver meets black, and symmetry and simplicity rule. But it's more than just good looks. The new Vitara's controls and meters have been meticulously designed and positioned. Everything is where you expect it to be, stylishly functional and aesthetically pleasing. The meter cluster clearly displays engine revolutions, road speed, fuel economy and usage, ambient temperature and gear position (auto). A beautifully simple analogue clock sits front and centre while the leather bound steering wheel integrates audio, cruise and handsfree controls. Every detail – down to the satisfying click of the climate air-conditioning dials, has been carefully considered to make the new Vitara a pure pleasure to drive.

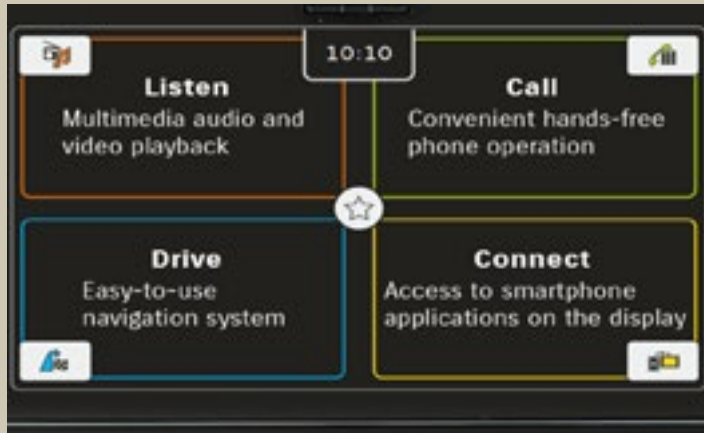


(Required USB connection not illustrated)



## Technology at your fingertips

To keep you entertained and informed the new Vitara has a centrally located 7-inch touchscreen display. This features a voice-activated audio navigation system, smartphone connectivity, and a reversing camera.



### SMARTPHONE CONNECTIVITY

With Bluetooth®, the Vitara is wirelessly connected to your music and contacts on your smartphone for hands-free operation. Plus with both Apple CarPlay and MirrorLink you can access a range of phone apps to simultaneously broadcast on your touchscreen display.



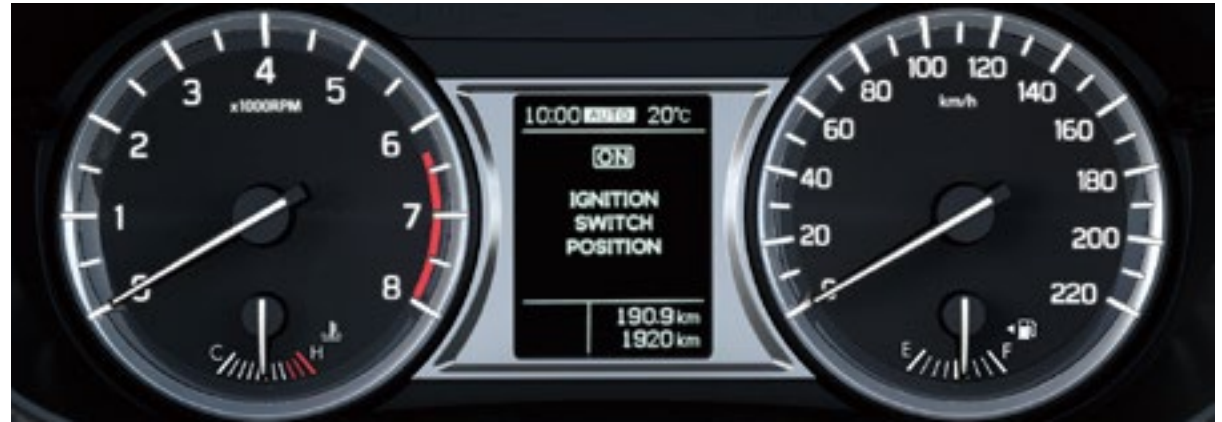
### MAPS

To help you get where you're going – or explore the road less travelled, the new Vitara has a built-in satellite navigation system with easy to follow maps. There's even a guidance feature that can help you avoid traffic jams.



### REVERSING CAMERA

This virtually eliminates blindspots and allows you to reverse safely without having to twist around in your seat. It makes parking easier and can be a lifesaver when kids or animals are around.



### CLIMATE AIR-CONDITIONING

Climate air-conditioning ensures every journey is a comfortable one. Dial in your desired temperature quickly and easily with digital accuracy. There's even a special pollen filter that removes dust and other particles so you can breathe easy – especially useful when you're out exploring the countryside.



### TILT AND TELE STEERING

Ergonomically designed adjustable seats combined with a multi-position steering wheel can adapt to virtually any shape and posture, ensuring the new Vitara will fit you like a glove.



### CRUISE CONTROL AND SPEED LIMITER

Cruise Control maintains your speed to a set level, while the speed limiter function allows you to set a maximum speed for safe driving.



### PUSH BUTTON START

Keyless start saves you fumbling for your keys every time you get in the car and is especially handy if your arms are full. It's more secure than a regular key, plus it prevents you from locking yourself out (LTD).









## The best of both worlds

In this modern world you no longer have to sacrifice fuel efficiency for engine performance. The combination of Vitara's low body weight with Suzuki's latest VVT engine design provides performance in the city, effortless open-road cruising, and plenty of off-road muscle when it's needed. A high-riding, roomy SUV with the fuel efficiency normally associated with a compact car (5.8L/100kms combined - 2WD), the new Vitara fits in a lot more adventure between fills. Plus, with a suspension tuned to ensure the best possible combination of stability and comfort, you are ready to go down any road.



### 5-SPEED MANUAL

There's nothing more satisfying than being in complete control. The Vitara's smooth-shifting manual is the perfect choice for drivers who love to drive.



### NEW 6-STAGE AUTO

With the close ratios of the newly developed 6-stage automatic gearbox, the Vitara offers a sensation of seamless power. Shifts are almost imperceptible and when you're ready for some fun, you can take control using the paddle shifters on the steering wheel.



**ALLGRIP**







## Choose your drive

Despite its elegant looks and civilised city manners the Vitara AWD is a capable, all-terrain performer. Again, Suzuki's unparalleled experience comes to the fore, giving you the confidence, stability and sure-footed handling you'd expect from a true off-roader. Different road surfaces and changing conditions each present their own challenge and the way the Vitara's transmission, engine and safety systems respond is customised to maximise performance in any given situation. With four selectable ALLGRIP modes you are able to modify the Vitara's handling at the touch of a button.



### **AUTO MODE**

Prioritises fuel economy in typical driving conditions and automatically switches to 4WD when it detects slippage.

### **SNOW MODE**

Optimal for snowy, unpaved and other slippery surfaces, the traction is enhanced during acceleration to give stability and control.



### **SPORT MODE**

Improves cornering performance and engine response by optimizing the accelerator and torque characteristics (Auto).

### **LOCK MODE**

For getting out of snow, mud, or sand, more torque is distributed to the rear wheels, while ESP and other control technologies are optimised to free the car.



# Taking safety to new levels

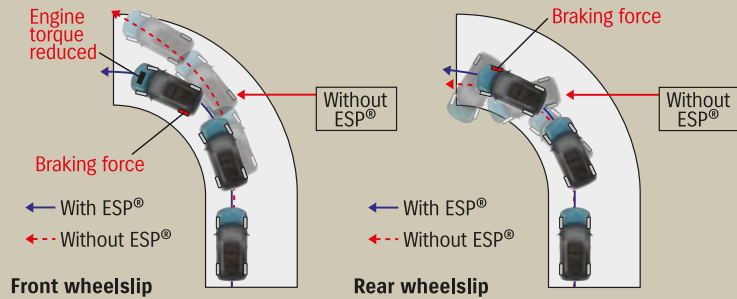
Inside the Vitara's quiet, well designed cabin, you get a reassuring sense of protection, and it's easy to see why. Thanks to a combination of TECT body design, 7 airbags and a suite of electronic systems including ABS with Electronic Brakeforce Distribution, and ESP Electronic Stability, Vitara offers exceptional passenger protection.





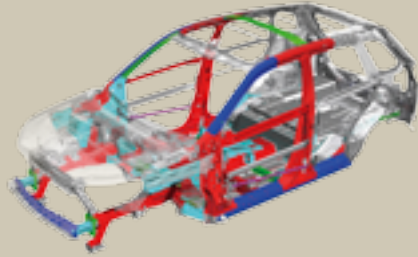
## ESP® control system

Electronic Stability Programme (ESP®) helps you stay in complete control when you're cornering by counteracting understeer and oversteer. It also improves traction and reduces skidding – whatever the surface, whatever the conditions.



### TECT BODY DESIGN

The beauty of the new Vitara's body goes more than skin deep. Incorporating Suzuki's TECT (Total Effective Control Technology) makes the Vitara lighter and safer with crumple zones to absorb and dissipate energy.



### HILL DESCENT CONTROL

This safety function regulates the speed at which the Vitara travels downhill. It's especially handy if you're on a steep slope or in a difficult off-road situation (AWD).



### HILL HOLD CONTROL

If you're on an incline, the brake is automatically applied until you move forward to prevent you rolling backwards. This makes hill starts easy, even in the most challenging conditions (Auto).

## 7 airbag system

A comprehensive 7-airbag system is fitted to mitigate collision forces. Front airbags for driver and passenger and a driver's knee airbag for protection in a frontal impact; side airbags to protect the driver and passenger's chest and lumbar regions in the event of a side impact; left and right curtain airbags to protect the heads of front and rear passengers in the event of a side impact.



### FOG LAMPS & LED DAYLIGHT RUNNING LAMPS

Essential for good road visibility in poor weather the Vitara's fog lamps are accentuated by the automatic daytime LED driving lamps.



### FRONT & REAR DISC BRAKES

Front ventilated and solid rear disc brakes deliver powerful braking performance with the security of ABS with Electronic Stability Programming (ESP®) to add stability during evasive manoeuvres.



### PARKING SENSORS

Parking is safer and easier with ultrasonic sensors in the front and rear bumpers that detect obstacles and send you a warning you can both see and hear (LTD).







## Urban accessory range

Sophisticated and stylish, the Vitara's right at home in the city. Parked alongside others, its unique presence draws admiring gazes from even the most well-heeled crowd. The Urban accessory range accentuates this heightened sense of style with chrome-plated fog lamp bezels, body-side mouldings and a roof spoiler.



## Rugged accessory range

Tough, practical, capable. The Vitara can go anywhere and look good doing it. Building on the Vitara's staunch attitude and off-road ability, the Rugged accessory range features front and rear skid plates, fog lamp bezels, body-side mouldings, and loading edge protection.



## No two Vitaras need be alike

No two drivers are the same, so the new Vitara offers a wide range of models and an extensive array of personalisation options. Whether you're looking for a few final touches for the interior or more significant enhancements for the exterior, there is no shortage of choice, or opportunities, to make the Vitara truly your own. As well as being able to customise your Vitara's exterior, you can also go to town on the interior, adding even more character to reflect your own unique personality. A range of trim options are available that encase the strikingly elegant instrument panel in your choice of colour.

**Turquoise**



**Orange**



**Piano black**



**White**





Equipment

COMFORT		JLX 2WD	LTD 2WD	JLX AWD	LTD AWD
Power steering		●	●	●	●
Tilt and telescopic-adjustable steering column		●	●	●	●
Electric windows front and rear		●	●	●	●
Steering wheel paddle shifters (Auto)		●	●	●	●
Cruise control and speed limiter		●	●	●	●
ALLGRIP 4-mode driving dial		-	-	●	●
Panoramic sunroof		-	●	-	●
Entry and start	Remote central door locking with answer-back	●	●	●	●
	Keyless entry and push-button start	-	●	-	●
Climate air conditioning with pollen filter		●	●	●	●
Media system	7-inch touch-screen tuner/SD	●	●	●	●
	Apple CarPlay and MirrorLink connectivity	●	●	●	●
	Satellite navigation and reversing camera	●	●	●	●
	USB input	●	●	●	●
	Handsfree Bluetooth® connectivity	●	●	●	●
	Four speaker system	●	-	●	-
	Six speaker system	-	●	-	●
Door mirrors	Electrically adjustable	●	●	●	●
	Electrically folding with integrated turn signals	-	●	-	●

INSTRUMENT PANEL

Tachometer		●	●	●	●
Illuminated instrument panel with dimmer		●	●	●	●
Information display	Outside temperature, digital clock, gear indicator	●	●	●	●
	Fuel consumption (instantaneous/average)	●	●	●	●
	ALLGRIP driving mode indicator	-	-	●	●
Lights-on key reminder and door-ajar warning lamp		●	●	●	●
Seatbelt warning system for all seating positions		●	●	●	●

INTERIOR

Cabin lights	Front map, centre cabin, glovebox	●	●	●	●
	Front footwell, centre lower box, vanity mirrors	●	●	●	●
Centre analogue clock		●	●	●	●
Central panel detailing	Silver	●	-	●	-
	Carbon patterned	-	●	-	●
Seat upholstery	Fabric with contrast stitching	●	-	●	-
	Leather and suede type fabric	-	●	-	●
Drink holders	4 front, 2 rear	●	●	●	●
	Leather steering wheel with cruise, audio, and phone controls	●	●	●	●
Driver's side seat height adjuster		●	●	●	●
60:40 split rear seats		●	●	●	●
Adjustable head restraints x5		●	●	●	●
Chrome garnishes		●	●	●	●
Front door storage pockets / arm rests		●	●	●	●
Overhead console box		-	●	-	●
Rear luggage board		●	●	●	●
Luggage area cover		●	●	●	●
12 V accessory socket front and rear		●	●	●	●

EXTERIOR		JLX 2WD	LTD 2WD	JLX AWD	LTD AWD
Styling	Wheel arch and under-protection mouldings	●	●	●	●
	Skid plate front and rear	●	●	●	●
	Silver roof rails	●	●	●	●
	Chrome accent grille	-	●	-	●
Headlamps	Halogen multi-reflector	●	-	●	-
	Halogen multi-reflector and LED projector	-	●	-	●
	LED daylight running lamps	●	●	●	●
	Automatic light-sensing	-	●	-	●
	Auto-levelling	-	●	-	●
Front fog lamps		●	●	●	●
Windscreen wipers	Front: 2-speed, variable intermittent, washer	●	●	●	●
	Rear: 1-speed, intermittent, washer	●	●	●	●
	Auto rain-sensing	-	●	-	●
Privacy glass (rear passenger, three quarter & hatch)		●	●	●	●
Tyres and wheels	215/55R 17 grey alloy wheels	●	-	●	-
	215/55R 17 polished alloy wheels	-	●	-	●
	Temporary spare wheel	●	●	●	●

SAFETY AND SECURITY

ABS with EBD and brake assist function		●	●	●	●
Brake override system		●	●	●	●
Hill-hold assist (Auto)		●	●	●	●
Hill descent control		-	-	●	●
Electronic stability programme (ESP®)		●	●	●	●
4-wheel disc brakes		●	●	●	●
Parking proximity sensors (4 front and 4 rear)		-	●	-	●
Reversing camera		●	●	●	●
SRS dual front airbags		●	●	●	●
Driver's knee airbag		●	●	●	●
Driver and passenger side airbags		●	●	●	●
Front and rear curtain airbags		●	●	●	●
Side impact beams		●	●	●	●
Collapsible steering column		●	●	●	●
Brake and clutch decoupling mechanism		●	●	●	●
Front ELR seatbelts with pre-tensioners and force limiters		●	●	●	●
Rear 3-point ELR seatbelts x3		●	●	●	●
ISOFIX child seat anchorages x2 and tether anchorages x3		●	●	●	●
Child-proof rear door locks		●	●	●	●
Engine security immobiliser		●	●	●	●

ESP® is a registered trademark of Daimler AG. Bluetooth® is a registered trademark of Bluetooth SIG, Inc. Garmin™ is a registered trademark of Garmin Ltd. Apple and CarPlay are trademarks of Apple Inc. MirrorLink is a certification mark of the Car Connectivity Consortium LLC. Apple CarPlay is compatible with iPhone 5 and above. For MirrorLink-compatible smartphones see [www.mirrorlink.com](http://www.mirrorlink.com)

\*Fuel consumption will vary due to factors such as vehicle condition, driving style and traffic conditions.



## Specifications

DIMENSIONS		2WD MODELS		AWD MODELS	
Overall length	mm	4,175		4,175	
Overall width	mm	1,775		1,775	
Overall height	mm	1,610		1,610	
Wheelbase	mm	2,500		2,500	
Track	Front mm	1,535		1,535	
	Rear mm	1,505		1,505	
Ground clearance	mm	185		185	
Minimum turning radius	m	5.2		5.2	

WEIGHTS					
Curb weight	JLX	kg	Man / Auto	1,070 / 1,095	1,160
	LTD	kg		1,120	1,185
Gross vehicle weight		kg		1,730	1,730

ENGINE					
Type	M16A				
Number of cylinders / valves	4 / 16				
Piston displacement	1,586				
Bore stroke	78.0 x 83.0				
Compression ratio	11:1				
Maximum output	86/6,000				
Maximum torque	156/4,400				
Fuel distribution	Multipoint injection				
Fuel type	91-98 RON				
Fuel consumption (combined*)	L/100km	Man / Auto	5.8 / 6.0	6.3	
C02 emissions	g/km	Man / Auto	123 / 127	131	

TRANSMISSION				
Drive system	Front wheel drive		ALLGRIP AWD	
Type	5-speed Man	6-stage Auto	6-stage Auto	
Gear ratios	1st	3.545	4.667	4.667
	2nd	1.904	2.533	2.533
	3rd	1.258	1.556	1.556
	4th	0.911	1.135	1.135
	5th	0.725	0.859	0.859
	6th	-	0.686	0.686
	Reverse	3.250	3.394	3.394
Final drive ratio	Front	4.411	3.502	3.502

CHASSIS		
Steering	Electric power assisted rack and pinion	
Brakes	Front	Ventilated discs
	Rear	Solid discs
Suspension	Front	MacPherson strut & coil spring
	Rear	Torsion beam & coil spring
Tyres	215/55 R17	

CAPACITIES			
Seating capacity	Persons	5	
Luggage capacity	Rear seatback folded	Litres	710
	Rear seatback raised	Litres	375
Fuel tank capacity		Litres	47
Towing capacity	Unbraked / Braked	kg	600 / 1,200

# VITARA



### JLX models



Cool White Pearl (ZNL)



Premium Silver 2 Metallic (ZCD)



Cosmic Black Pearl (ZCE)



Atlantis Turquoise Pearl Metallic (ZQN)

### LTD models



Cool White Pearl (ZNL)



Premium Silver 2 Metallic (ZCD)



Cosmic Black Pearl (ZCE)



Savannah Ivory Metallic / Cosmic Black Pearl (A9N)



Horizon Orange Metallic / Superior White (A6J)



Atlantis Turquoise Pearl Metallic / Cosmic Black Pearl (A9L)



Fabric with contrast stitching interior



Leather and suede type fabric interior



# VITARA!

**SUZUKI NEW ZEALAND LIMITED 1 HEADS ROAD, WANGANUI, NEW ZEALAND. [WWW.SUZUKI.CO.NZ](http://WWW.SUZUKI.CO.NZ)**

Standard and optional equipment available may vary from time to time. Some international models illustrated – please enquire at your Suzuki dealer for exact specifications. Suzuki New Zealand Ltd reserves the right to change, without notice, prices, colours, materials, equipment, specifications and models, and also to discontinue models. Your fuel consumption will vary due to factors such as vehicle condition, driving style and traffic conditions. Jan 2016 SZA0396.



**Way of Life!**