

# SX4



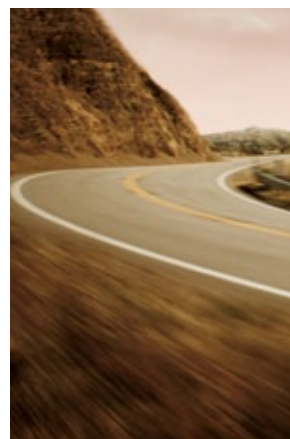
Way of Life!





# Sporthatch style as versatile as you are

Mostly we go to places we need to be; into the office, off to school or sports, or out shopping. The SX4 LTD Sporhatch is perfectly suited to all this and more. Combining intelligent use of space, a responsible yet athletic engine and the style to shine, the SX4 is all you need to explore near and far.





**Roof Rails**

Stylish and aerodynamic, the fixed roof rails on the SX4 provide flexibility and versatility for your perfect getaway.

**Cruise Control**

Cruise comfortably and consistently under the legal limit with the SX4's simple to operate controls. Suitable for open roads and longer trips.

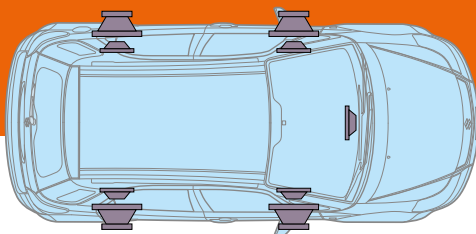


## Awaiting your command

Get behind the wheel of the SX4 and you'll soon discover what makes this Suzuki so special. Awaiting your commands is a full-featured satellite navigation system that also controls audio and Bluetooth® handsfree calling. Elegantly crafted with quality materials and easy to reach controls, the SX4 creates a stylishly integrated driving environment. Visibility is superb in all directions and your comfort is never compromised.

### Ready to navigate

The SX4 comes complete with a Garmin touch-screen satellite navigation and infotainment system including 2D and 3D maps, handsfree calling, address book copying with supported phones, connection to iPod or other USB audio device, CD and SD card playing, and quality AM/FM audio system with nine speakers placed around the cabin.







### Simple, Effective Layout

Once you get behind the wheel of your SX4 you'll soon appreciate that this car was designed with the driver in mind. The European-inspired dash layout is simple and elegant, with everything in just the right place to make driving easy and enjoyable. Surfaces are strong yet soft to the eye with minimal glare and subtle design touches including dark chrome garnishes and hardwearing, contemporary seat fabrics.



### Space Travel

The 60:40 rear seats fold down to allow larger items to be stowed in the rear while still providing space for two passengers.

### Elevated Seating

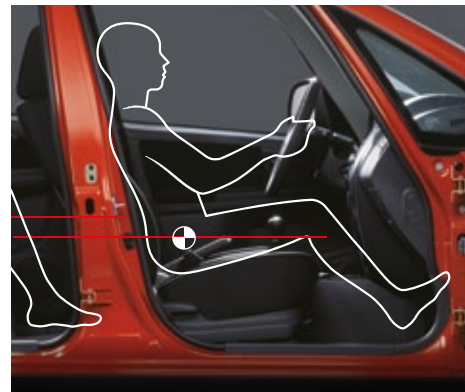
The SX4 features a high driving position with elevated seating for both front and rear occupants. This provides the driver with all-round visibility, while passengers can enjoy better comfort and ease of entry and exit.

### CVT Automatic

Suzuki's continuously variable transmission (CVT) delivers smooth, efficient transitions for excellent performance and improved fuel efficiency. The CVT transmission can also be operated in a 6 stage 'steptronic' mode from the gear lever, or via steering wheel mounted paddle shifters.

### Integrated controls

Controls for air conditioning, ventilation, electric windows and mirrors are fully integrated and easily accessible. Fully automatic climate air with pollen filter keeps the cabin fresh and free from allergens.



### Tilt Adjustable Steering Wheel

For greater comfort, the steering column is easily adjusted to match your personal preference.

### Keyless Start System

Lets you lock and unlock the vehicle by pressing a button on the door handle, and start the car while the key stays safely in your pocket. Excellent for security.







## Ready for the unexpected

The SX4 has a comprehensive array of active and passive safety features. ABS braking and ESP® with traction and stability control supplements the stopping power that the 4-wheel disc brakes deliver. As you take to the road, this range of safety features combines to provide the assurance you need to enjoy your SX4's performance to the full.



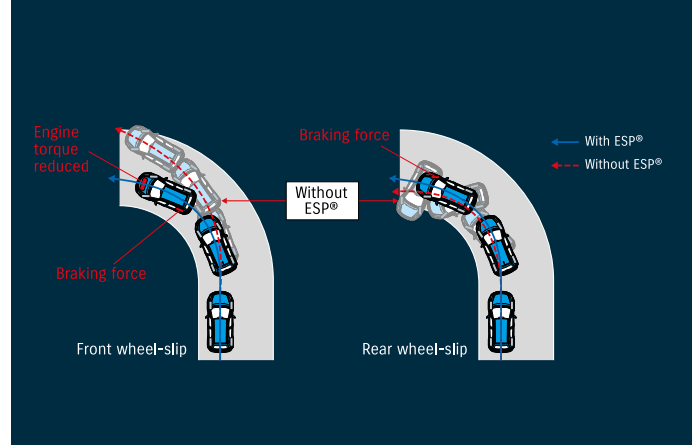




### ESP® Control System

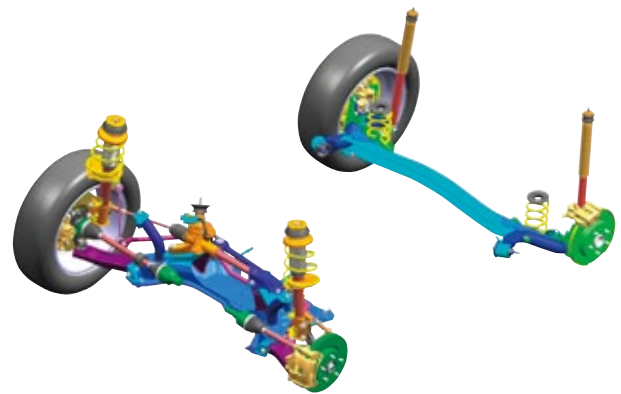
An Electronic Stability Programme (ESP®) supplements the SX4's inherent stability with three major functions: ABS with EBD (Electronic Brake force Distribution), traction control, and stability control. Various sensors are employed to determine and hold the intended cornering line, adjusting power to increase traction while reducing wheel-slip for enhanced safety.

ESP® is a registered trademark of Daimler AG



### Responsive Suspension

The SX4 incorporates an independent MacPherson strut front suspension and rigid torsion bar rear suspension. This combination has been well proven to help absorb vertical motion and bouncing, providing a safer, smoother ride.

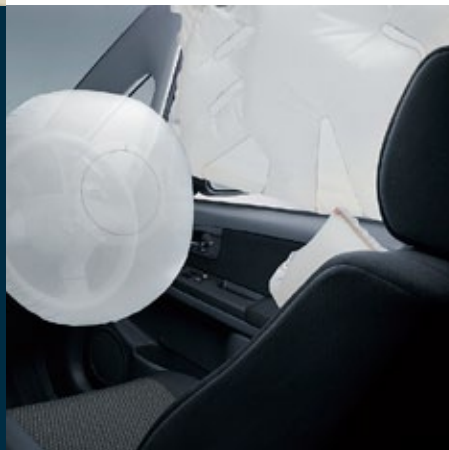
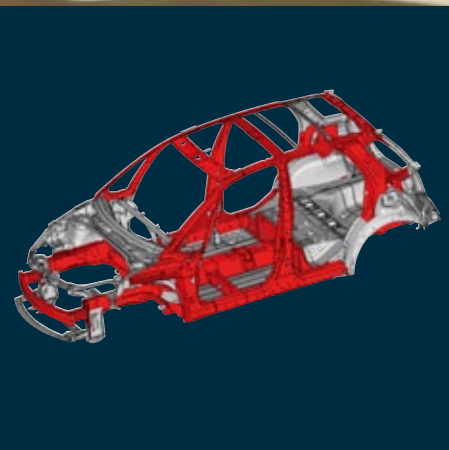


### Brake Override System

SX4 is fitted with a safety Brake Override System. This mechanism enables the driver to halt the vehicle if the accelerator pedal becomes stuck. The throttle-override technology cuts the power in the unlikely event of the brake and accelerator pedal being depressed at the same time.

### Power for all reasons

Suzuki's efficient 2.0 litre 16 valve DOHC VVT unit is standard. Variable valve timing technology (VVT) provides plenty of low range torque for immediate response and quick acceleration. As the revs increase, the timing rate varies to provide more effective fuel combustion, putting an impressive 112kW of power at your command. Designed to deliver higher energy output with maximum efficiency, the engine is more fuel-efficient, with lower CO2 emissions, than many similar sized units.



### Safety-engineered body

The SX4 body incorporates Suzuki's TECT safety design. A rigid frame directs energy around the cabin and away from the occupants, while numerous crumple zones help absorb and dissipate collision energy before it can reach the interior. Side impact door beams, reconfigured side members, and other reinforcements throughout further enhance the design.

### Preventative Safety

Safety in your SX4 begins with enhanced visibility on all sides, an elevated driver position, and minimal blind spots. A six airbag system combining SRS front, side and curtain airbags is provided to help prevent injury in the event of a collision.

### Strap yourself in

Front and rear seats are equipped with three-point ELR seatbelts with pretensioners and force limiters for enhanced safety. Rear seats also include two ISOFIX and three tether child seat anchorages.



# SX4



COMFORT		LTD SPORTHATCH
Electric windows		•
Electrically adjustable and folding door mirrors		•
Vertical adjustable tilt steering wheel		•
Remote control door locking with answer back (includes tailgate)		•
Keyless entry and start system		•
Climate-control air conditioning with pollen filter		•
Audio system	Touch-screen tuner/CD/SD/MP3 with sat nav	•
	USB input	•
	Handsfree Bluetooth® connectivity	•
	Nine speaker system	•
Steering wheel audio controls with back-lighting		•
CVT with steering wheel mounted shift paddles		•
Cruise control		•
INSTRUMENT PANEL		
Tachometer		•
Information display	Digital clock	•
	Outside temperature gauge	•
	Fuel consumption gauge	•
Lights-off / key reminder and door-ajar warning lamp		•
Fuel warning indicator		•
Driver's seatbelt warning lamp		•
INTERIOR		
Cabin lights (3 position) and luggage area light		•
Sun visors	x 2 (with ticket holder & vanity mirror)	•
Bottle holders	Front: 4 / Rear: 3	•
Leather-bound steering wheel		•
Cloth seat material / door trims		•
Front seats	Front seat armrests	•
	Lever-type seat height adjuster (driver's side)	•
	Under-seat tray (Front passenger's side)	•
	Seatback pocket (passenger's side)	•
Rear seats	60/40 split folding	•
	Adjustable head restraints x 3	•
Assist grips		•
Front door storage pockets / arm rests		•
Rear luggage shelf		•
12V accessory socket		•
Remote fuel lid opener		•
Glove box		•
EXTERIOR		
Styling	Wheel arch extensions	•
	Under-protection mouldings	•
	Roof Rails	•
	Rear spoiler	•
Multi-reflect halogen headlamps		•
Electric folding mirrors with built-in signal lamps		•
Front fog lamps		•
Green tinted windows		•
Windscreen wipers	Front: 2-speed variable intermittent & washer	•
	Rear: 1-speed intermittent wiper & washer	•
Rear window demister		•
Tyres and wheels	205/60R16 with aluminium alloy wheels	•
SAFETY AND SECURITY		
ABS with EBD and brake assist		•
Brake override system		•
Electronic stability programme (ESP®)		•
4-wheel disc brakes		•
SRS dual front airbags		•
Driver and passenger side airbags		•
Front and rear curtain airbags		•
Side impact beams		•
Collapsible steering column		•
Brake and clutch decoupling mechanism		•
Front ELR seatbelts with pre-tensioners and force limiters		•
Rear 3-point ELR seatbelts x3		•
ISOFIX child seat anchorages x2 and tether anchorages x3		•
Child-proof rear door locks		•
Engine security immobiliser		•
Driver's door security unlock		•

ESP® is a registered trademark of Daimler AG.

DIMENSIONS		LTD SPORTHATCH
Overall length	mm	4,150
Overall width	mm	1,755
Overall height	mm	1,605
Wheelbase	mm	2,500
Track	Front mm	1,500
	Rear mm	1,495
Ground clearance	mm	175
Minimum turning radius	m	5.3
WEIGHTS		
Curb weight	kg	1,285
Gross vehicle weight	kg	1,710
ENGINE		
Type		J20B
Number of cylinders / valves		4 / 16
Piston displacement		1,995
Bore stroke		84.0 x 90.0
Compression ratio		10.2:1
Maximum output		112/6,200
Maximum torque		190/4,000
Fuel distribution		Multipoint injection
Fuel type		91RON
Fuel consumption (combined)	L/100km	7.6
CO2 emissions	g/km	178
TRANSMISSION		
Drive system		2WD
Type		CVT
CHASSIS		
Steering		Power assisted rack and pinion
Brakes	Front	Ventilated discs
	Rear	Solid discs
Suspension	Front	MacPherson strut & coil spring
	Rear	Torsion beam
Tyres		205/60R16
CAPACITIES		
Seating capacity	Persons	5
Luggage capacity	Rear seatback folded	Litres 530
(VDA method)	Rear seatback raised	Litres 253
Fuel tank capacity	Litres	50

## EXTERIOR PAINT OPTIONS



Snow White



Star Silver



Mineral Grey



Super Black



Boost Blue



Sunlight Copper



Ablaze Red

Standard and optional equipment available may vary from time to time. Please enquire at your Suzuki dealer for exact specifications. Suzuki New Zealand Ltd reserves the right to change, without notice, prices, colours, materials, equipment, specifications and models, and also to discontinue models. Fuel consumption information is provided for comparative purposes only. Your fuel consumption will vary due to factors such as vehicle condition, driving style and traffic conditions. Feb 2014 SZA0117



SUZUKI NEW ZEALAND LIMITED 1 HEADS ROAD, WANGANUI, NEW ZEALAND. WWW.SUZUKI.CO.NZ