



SUZUKI

Way of Life!

**THE  
SUZUKI  
SWIFT  
SPORT**



**HAVE TO**  
*have it.*



# SOME THINGS YOU JUST HAVE TO HAVE

**Like the Swift Sport. Because when it comes to a hot-hatch with plenty of style, agility and attitude, this one will grab you from the word go.**

For a compact car, it's got loads going on. Like performance-focussed design to make your pulse race. And sharp, responsive handling that puts the exhilaration back into driving. Then there's safety (best in its class in fact), great fuel economy and outstanding value.

All this and we haven't even mentioned how much fun it is to drive.

**Feel like you have to have one?  
Could be the best decision you ever make.**



**04. Performance**



**10. Exterior**



**16. Interior**



**22. Safety**



**28. Colours and accessories**



**32. History**



**34. Tech specs**



**CAN YOU FEEL THE  
FORCE?**







# MORE THAN YOU BARGAINED FOR

*with sharp engineering that's built to impress.*

**Put your foot down and you'll immediately understand what makes the Swift Sport such an exciting hot hatch.**

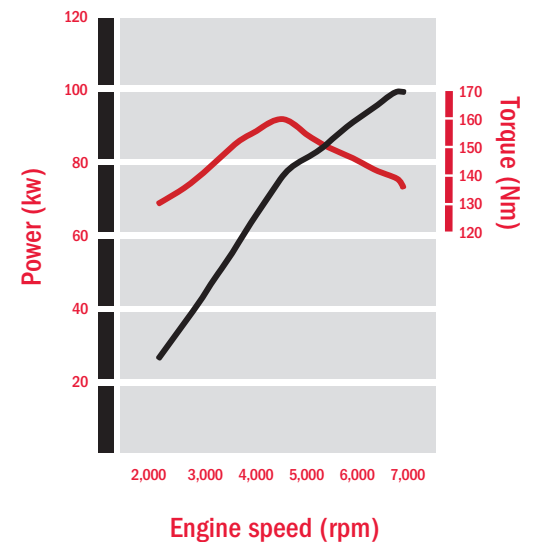
Because it's light with a high power to weight ratio, it manages 0-62 mph in just 8.7 seconds. Then there's the 6 speed manual gearbox that delivers a seamless transmission of power and acceleration.

But since most of us don't live on a racetrack, the Swift Sport has also been engineered to deal with the reality of city driving and speed limits. So it's lively, but controlled when it has to be too.

From a design perspective, the Swift Sport's wide stance, low centre of gravity and short overhangs enhance its handling, and help to ensure a smooth journey even when the road up ahead isn't.

Want more? Look further and you'll find stiffer coil springs and the use of MONROE® shock absorbers for more responsive handling and reduced body roll. And for added grip there are low profile tyres that don't just perform brilliantly, they look the business too.

The Swift Sport has been built to be fast and to control the road. Can't wait to experience it? You'll find 'how to book a test drive' at the back of this brochure.





A detailed close-up of a car engine, showing various components like the valve cover, intake manifold, and timing belt. The engine is silver and black, with some yellow text on the valve cover.

# LOW EMISSIONS LOW FUEL COSTS

**no compromise.**

**Performance shouldn't come at a cost to you or the next generation. That's why the Swift Sport is built for efficiency, with fuel consumption on a combined cycle of up to 44.1mpg. That means low CO<sub>2</sub> emissions at 147g/km and less road tax.**

It also means you'll spend less time at the pumps. And let's face it, when you're behind the wheel relishing the ride, you don't want to be pulling in at petrol stations. Although they do provide a great opportunity for other car owners to sneak a few admiring glances.














# IT'S A RACY LITTLE NUMBER

# SPORTS STYLING

**that's got plenty of attitude.**

**Head-turning stuff, that's what Swift Sports are made of. Because from whichever angle you admire them, their sleek sports styling, sharp bodywork and low stance look the business. And enhance performance too.**

When it comes to body colour, whichever of the five you choose from, their high quality metallic finish adds a layer of understated class. While its compact three door design boosts the car's robust profile and sporty feel.

But the Swift Sport is not just about style. It's about substance too. And its diffuser with dual exhaust and rear upper spoiler improves the car's aerodynamics and helps it hold the road. It also reduces drag, increasing fuel efficiency and lowering CO<sub>2</sub>.

Serious road-worthy attitude? The Swift Sport has got more than enough.









# YOUR FRIENDS WILL BE ENVIOUS

*get used to it.*



**The Swift Sport comes fully loaded with plenty of sharp-looking exterior features. But none that come at an extra cost to you, as they're fitted as standard.**

High Intensity Discharge Headlamps that light up the road with a more powerful beam. Electronically folding door mirrors that help parking in tight spots. Finned front fog lamps, headlamps and rear combination lamps with sharp anthracite accents. They're all included.

Then there's the body coloured exterior mirrors, door handles, spoiler and side sill covers which all make a statement. As do the bold front and rear bumpers and chunky front grille. The sporty set of 17" alloys, rear roof spoiler and twin exhausts complete the picture.

There you have it. A host of sharp-looking features that come as standard. Although of course, there's nothing standard about this car.





**IT'S WHAT'S  
INSIDE THAT  
COUNTS**











# ONCE YOU GET IN

*you might not want to get out.*

**A quick glance at the Swift Sport could become a long gaze, because once you're inside you'll be hooked. Its bold lines and sporty accents demand respect from every angle.**

In the front, the sport seats with red stitch trim put you in the mood for driving, while the stainless steel sport pedals respond fast underfoot. Take a closer look and you'll find nifty storage solutions cleverly placed around the cabin. Three cup holders, seatback pockets, a ticket holder in the sun visor, coat hooks and glove box mean everything is close to hand when it needs to be.

In the back, the spacious interior means everyone travels comfortably. And if you're carrying luggage its roomy boot manages over 211 litres of space, extending to 512 litres with the seats folded down.

For a compact car, the Swift Sport has got plenty of space appeal.

**ACCESSORISE WITH: PIONEER® MULTIMEDIA UNIT**









# TAKE A CLOSER LOOK

*it's all in the detail.*

**When it comes to the interior, the Swift Sport has got one you'll be more than happy to get up close and personal with. Everything about it has been designed to put the pleasure back into driving.**

The leather-covered steering wheel allows for a natural grip and easier handling, with red stitching for a genuine sporty look. While the dynamic instrument panel design looks futuristically good. When your hands are at the wheel, audio and Bluetooth phone controls are both at your fingertips. And for music fans, the Swift Sport's MP3/WMA compatible CD tuner with four speakers, two tweeters and USB port never misses a beat.

When it's warm outside, automatic air con helps you keep your cool while long journeys are made easier with Cruise Control. And with the Swift Sport's keyless entry system, as long as the key fob is in your pocket, the car starts at the touch of a button.

Attention to detail? You'll find plenty. And it's all included in the price.





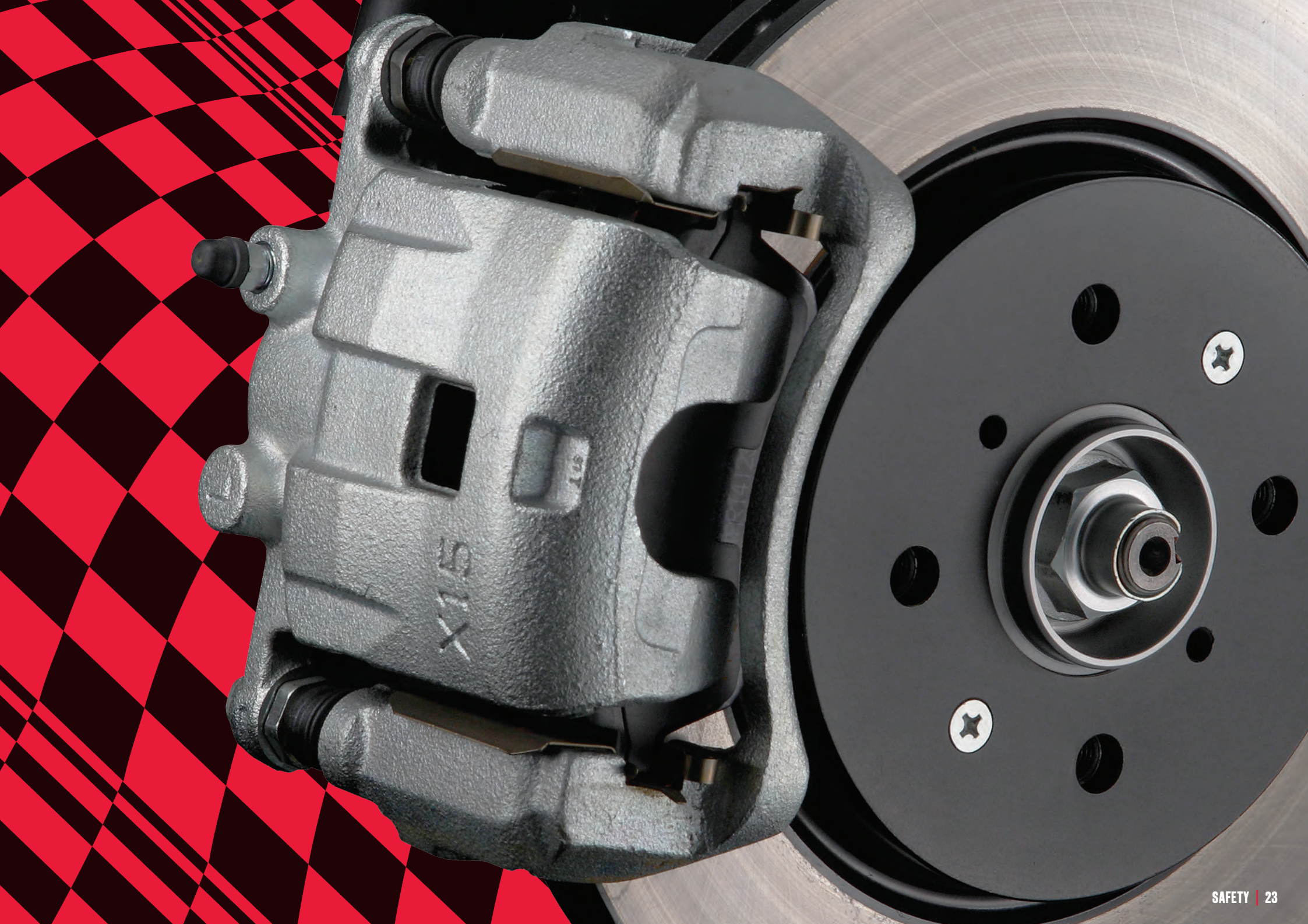


# WE'VE GOT SAFETY SORTED

Safety is a priority for Suzuki and a key feature that's instinctively built in to everything we do. In fact, Euro NCAP has awarded the Swift the maximum five-star ranking. So when you drive one of our cars, you're in safe hands.













# MAXIMUM SAFETY COMES AS STANDARD

*so sit back and enjoy the drive.*

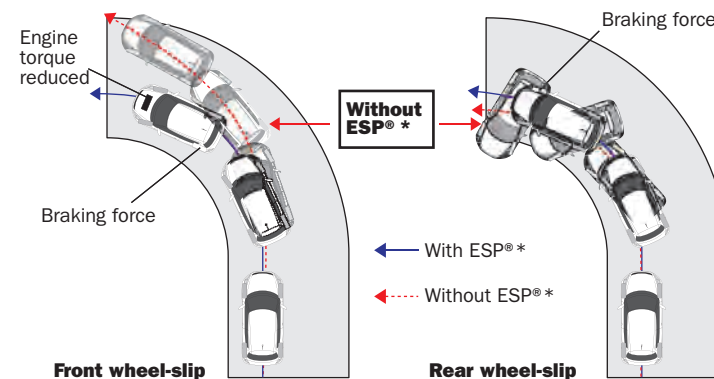
**There's a good reason why owners get such a buzz driving their Swift Sport. It's designed to be fast, fun and responsive. But while speed is paramount, safety is too. And there's an impressive portfolio of advanced safety features built in to the car, all of which come as standard.**

On the outside, the Swift Sport is made of a stiff yet light body based on Suzuki's Total Effective Control Technology, which absorbs and disperses any shock of impact. High-tensile steel keeps the body light in weight but don't let that fool you, as it offers masses of reassurance. And the car's reduced roll angles mean more control on tight corners.

On the inside, the Swift Sport's got everyone covered with seven airbags, including curtain airbags and one for the driver's knee. Then there's its ESP®\* (Electronic Stability Program) which reduces the effect of skidding during an emergency manoeuvre. To top that there's the additional reassurance of ABS and EBD (Electronic Brake-force Distribution), a system that varies the amount of force applied to each of the brakes when needed. And for precious cargo in the back? The ISOFIX child seat points will keep them safe as houses.

The Swift Sport is all the car you want, with all the safety you could ask for.

\*ESP® is a registered trademark of Daimler AG





**STOP**



**STARING, START DRIVING.**

# GET SOME COLOUR IN YOUR LIFE.

Make your mark with one  
of these colour options.



COOL WHITE PEARL METALLIC



SILKY SILVER METALLIC



COSMIC BLACK PEARL METALLIC



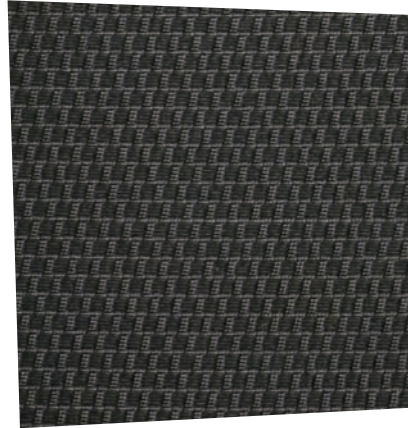


**ABLAZE RED PEARL METALLIC**



**KASHMIR BLUE PEARL METALLIC**

**Sport trim**





# EXPRESS YOURSELF

**with accessories and details,  
just make it fun.**



No two Swift Sports need to look the same thanks to our smart accessories that you can mix and match. And you'll find all of them on our website. So for once, we're going to suggest you let your fingers do the walking to: [www.suzuki.co.uk/cars/mysuzuki/my-accessories](http://www.suzuki.co.uk/cars/mysuzuki/my-accessories)





**FRONT LOWER SPOILER**



**SIDE GRAPHIC DECAL**



**REAR LOWER SPOILER**



**MULTI ROOF RACK**



**SILVER CENTRE CONSOLE TRIM**



**SILVER DOOR SILL TRIM SET**



**METALLIC SILVER FOG LAMP BEZEL SET**



**CENTRE ARMREST**



**CARGO TRAY**



**REVERSING AID SENSOR KIT**



**CARPET MAT SET**



**MULTI ROOF RACK AND LOCKABLE BIKE MODULE**



**LEATHER GEAR KNOB WITH RED DETAILING**



**DARK GREY, CARBON EFFECT DOOR SILL TRIM SET**



**PIONEER® MULTIMEDIA UNIT**

# OVER A CENTURY OF ENGINEERING MILESTONES.

## 1909

### inspiration

**Suzuki Founded:** Michio Suzuki founds the Suzuki loom works in the small Japanese village of Hamamatsu.

He creates a loom that is different from the rest. It's faster, more productive and easier for everyone to use. It came from a philosophy about a way of life that no one had considered before. Michio Suzuki believed in innovative technology for people.



## 1952

### original

**First Motor Vehicles:** Suzuki is now established as one of the world's leading manufacturers and Michio Suzuki turns to everyday life for inspiration.

He discovers the need for affordable and reliable transport. He develops an inventive two-wheeled bicycle powered by an engine, and works on innovative prototypes for a car that is compact as well as practical to drive. Transport now becomes Michio Suzuki's main focus.



## 1955

### ground breaking

**The Suzulight:** Following the success of Suzuki motorcycles, an even more successful automobile is launched.

The Suzulight breaks the mould with front wheel drive, four wheel independent suspension and rack and pinion steering.



## 1965

### new waters

**Suzuki Outboard motors:**

Suzuki establishes themselves in the outboard motor field by launching their D55 2-stroke and Fronte 800 outboard motors.



## 1970

### original

**Jimny 4x4 debuts & Kosia automobiles plant is born:** Bringing the first 'real' 4x4 into the market, Suzuki unveils the Jimny.

It allows more and more people to explore off-road, and the car soon becomes a keen favourite amongst drivers.



## 1976

### popular

**Alto Debuts:** The first generation Alto breaks into the automobile market with a competitive price.

Its combination of compact design and value gains it much publicity with it regarded as a "micro sensation."

## 1980

### legendary

**GSX Debuts:** Suzuki release the GSX-series.

An evolution of the GS, the GSX contains a powerful 4-valve engine, with the early four-cylinder engines being commonly regarded amongst the most reliable motorcycle engines ever mass-produced.





# 1983

## crowd favourite

**Swift Debuts:** Premiering at the 1983 Tokyo Motor Show, the Swift starts life with many different names across the world.

Ranging from Geo Metro to Margalla. Originally classed as a supermini or supercompact, the success of the Swift has evolved into a hatchback, a sedan and even a convertible.



# 1988

## small and tough

**Grand Vitara Debuts:**

Known under a variety of names worldwide, such as Suzuki Escudo, Sidekick, Geo Tracker and simply Vitara, the Grand Vitara bridges the gap between the small car and the traditional 4x4.

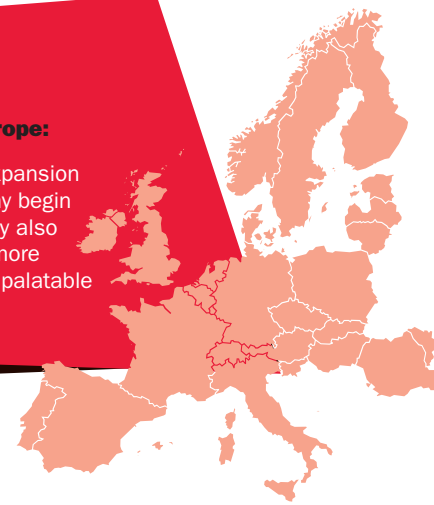


# 1990

## development

**Suzuki ventures into Europe:**

In a bid to continue with expansion and innovation the company begin to expand into Europe. They also change their name to the more internationally friendly and palatable Suzuki Motor Corporation.



# 2002

## celebrity

**Suzuki Liana gains fame as Top Gear track car:**

The Top Gear test track hosts the Suzuki Liana as their reasonably priced car. Many celebrities graced the wheel including Michael Gambon, Michael McIntyre and Jimmy Carr with the fastest non-professional lap being won by Ellen McArthur, completing the lap in 1 minute 46.7 seconds.



# 2004

## sporty and stylish

**Swift compact unveiled:**

The second generation Swift makes its entrance at the Paris Motor Show. The Swift marks a significant departure from the 'Cultus-based' model and becomes much more sporty and stylish.



# 2005

## fun

**Swift is Car of the Year:**

The Swift is presented with a special achievement award of Japan's 'Most Fun car of the Year' in 2005.

# 2009

## centenary

**100 years of innovation:**

Suzuki reaches its centenary, remembering its humble beginnings Suzuki commemorates its years of innovation and success.



**Good to know, means good to go. With Suzuki, getting your new car is just the start. Because we'll help you make the most of the journey now and in the future too. Here's a quick heads up of what we can offer.**

#### **WARRANTY. IT'S ABOUT TRUST.**

Every new Suzuki comes with a comprehensive three year or 60,000 mile warranty (whichever comes first) and a twelve year anti-perforation warranty\*. The warranty is also transferable to other owners too. So they can also have peace of mind.

#### **ROADSIDE RECOVERY. WE'LL BE RIGHT THERE.**

We're always around if you need breakdown assistance too – from the flat tyre, to the unforeseen accident. New cars come with a one year Suzuki Assistance plan provided by the AA Suzuki Assistance team. The cover includes 24 hour Roadside and Homestart cover, with European assistance too.

#### **TALK TO US.**

Our Customer Services Team could talk all day about your Suzuki. From the product range to services for drivers, they can fill you in on everything.

So if you've got a question, just get in touch on 0845 850 8800 or at Suzuki GB PLC, Steinbeck Crescent, Snelshall West, Milton Keynes, Bucks MK4 4AE.

## Technical Specifications

Engine	Type	M16A
	Number of cylinders	4
	Number of valves	16
	Piston displacement	cm3 1,586
	Maximum output	PS (kW)/rpm 136 (100) / 6,900
	Maximum torque	Nm (lbft)/rpm 160 (118) / 4,400
	Fuel distribution	Multi Pt
	EU emission standard	Euro 5

Transmission	Type	6-speed manual
	Gear ratio	1st 3.615
	2nd 2.047	
	3rd 1.518	
	4th 1.156	
	5th 0.918	
	6th 0.794	
	Reverse 3.481	
	Final gear ratio 3.944	

Weights & Dimensions	Tyres	195 / 45 R17
	Overall length	mm 3,890
	Overall width	mm 1,695
	Overall height	mm 1,510
	Wheelbase	mm 2,430
	Minimum turning circle	m 10.4
	Ground clearance	mm 130
	Seating capacity	Persons 4
	Luggage capacity (seatback folded, VDA)	512
	Luggage capacity (seatback raised, VDA)	211
	Kerb weight inc full options	kg 1,045
	Gross vehicle weight	kg 1,480

\*Jimny comes with 6 year perforation warranty



<b>Performance &amp; Economy</b>	Maximum speed	mph	121
	0-62 mph	seconds	8.7
	Fuel tank capacity	litres	42
	CO <sub>2</sub> emissions	g/km	147
	Urban	mpg (l/100km)	33.6 (8.4)
	Extra-Urban	mpg (l/100km)	54.3 (5.2)
	Combined	mpg (l/100km)	44.1 (6.4)

## Equipment

### SAFETY

- ABS with EBD and Brake Assist function
- ESP® (Electronic Stability Program)\*
- Driver & front passenger airbags
- Front passenger airbag deactivation system
- Side airbags (incorporated into front seats)
- Curtain airbags
- Driver knee airbag
- Front 3-point ELR seatbelts with pretensioner, force limiter and height adjuster
- Rear 3-point ELR seatbelts
- Foot-protecting brake and clutch pedals
- Side impact protection beams
- High mounted stop lamp
- ISOFIX child seat anchorages
- Child seat tether anchorages
- Childproof rear door locks

### SECURITY

- Immobiliser
- Remote central door locking
- Deadlocks
- Freewheeling key cylinders
- Visible VIN

### COMFORT AND CONVENIENCE

- Cruise control
- Driver seat height adjuster
- Electric front windows with drivers side auto-down
- Front accessory socket
- Front sun visors with vanity mirrors
- Front assist grips x 2
- Rear assist grips x 2

- Power steering
- Tilt and telescopic adjustable steering wheel
- Tachometer
- Digital clock
- Outside temperature display
- Fuel consumption display (average/instantaneous) and range display
- Remote fuel lid opener
- Low fuel warning lamp
- Lights-on and key-in reminder
- Front map light
- Centre cabin light
- Luggage area lamp
- Front seatbelt warning lamp & alarm

### HEATING, VENTILATION AND VISIBILITY

- Automatic air conditioning
- Pollen filter
- Front fog lamps
- Front wiper with adjustable intermittent
- Rear wiper with intermittent
- Automatic headlamps
- HID projector headlamps
- Automatic headlamp levelling
- Electrically adjustable, heated door mirrors
- Electrically folding door mirrors

### STORAGE

- 3 cup holders
- Glove box
- Upper storage tray with lid
- Front passenger side seatback pocket
- Ticket holder (on drivers sun visor)

- Centre console with storage
- Storage pocket with bottle holder, all doors

### ENTERTAINMENT

- MP3 / WMA compatible CD tuner
- USB socket
- 4 speakers
- 2 tweeters
- Steering wheel mounted audio controls
- Rear roof mounted antenna

### STYLING

- 17" Alloy wheels
- Tailgate mounted roof spoiler
- Side sill covers
- Dual exhaust exits
- MONROE® shock absorbers\*\*
- Body colour ext door handles and mirrors
- Black-coloured A & B pillars
- Rear privacy glass
- Green-tinted glass
- 3-spoke leather covered steering wheel
- Stainless steel sports pedals

### TECHNOLOGY

- Keyless entry with engine start button
- Bluetooth integrated into audio unit

\*ESP® is a registered trademark of Daimler AG.

\*\*MONROE® is a registered trademark of Tenneco.

## Finance

We put as much thought into keeping things easy on your pockets as we do into making cars that are easy on the eye. That's why we have developed a number of affordable finance packages.

1. Finance packages from one to five years. We know you love choices, that's why we let you choose the period that works best for you.<sup>1</sup>
2. Fixed interest rates,<sup>2</sup> which ensure your payments won't change during the loan period, so you'll know where you are at.
3. Fixed payments, allowing you to budget ahead and avoid any surprises.
4. Or fancy driving away a new car every two or three years? Suzuki Finance Driveplan, our Personal Contract Purchase product, gives you this benefit.<sup>3</sup>
5. And you'll be in good company. Suzuki Finance is part of Black Horse Group which is part of Lloyds Banking Group.

Drop in to your local Dealer, pull up a chair and crunch some figures. The coffee might not be blended to perfection, but you can be sure there will be a finance offer to suit your palate.

Finance is available to persons aged 18 years or over, subject to status. Indemnities may be required. Suzuki Finance, St William House, Tresillian Terrace, Cardiff CF10 5BH.

<sup>1</sup> Ask your Dealer about the latest offers.

<sup>2</sup> Ask your Dealer for the latest terms and conditions.

<sup>3</sup> Car to be returned to your Suzuki Dealer on time, in good condition (fair wear and tear accepted) and within the Permitted Maximum Mileage.

# READY TO TAKE A TEST DRIVE?

You may not want to give the car back.



**VISIT YOUR LOCAL AUTHORISED SUZUKI DEALER OR [WWW.SUZUKI.CO.UK/CARS](http://WWW.SUZUKI.CO.UK/CARS)**

Specifications shown have been achieved by production models under standard operating conditions. Data is intended to describe vehicles and their performance fairly, but may not apply to every vehicle. Colours, specifications and equipment may vary without notice. All details correct at time of going to press: June 2012. Vehicles shown throughout this brochure are for illustration only and may feature non-UK equipment.

Suzuki GB PLC, Steinbeck Crescent, Snelshall West, Milton Keynes, Bucks MK4 4AE. Suzuki Contact Centre: 0845 850 8800 (calls may be recorded or monitored)



**Way of Life!**