



SUZUKI

Way of Life!

THE SUZUKI SWIFT



HAVE TO
have it.



CAN'T STOP

thinking about the Swift?

We know the feeling. Because when you design a smart-looking hot hatch that's this much fun to drive, it's hard to think about anything else.

What makes the Swift so sought-after? Once people experience its superb handling and natural responsiveness, they feel they have to have one. (Just ask our Dealers. They'll tell you that more than half of those who take a test drive buy one.)

Then there's safety. With a Euro NCAP 5-Star rating it's up there with the best in its class. Same can be said for affordability. Which other car delivers so much performance for such amazing value? Exactly.

The Swift is confident, fuel savvy and bursting with personality. Feel like you have to have one? It's okay. You've come to the right place.

The more you get to know it, the more you have to have it.



04. Exterior



10. Interior



16. Performance



22. Safety



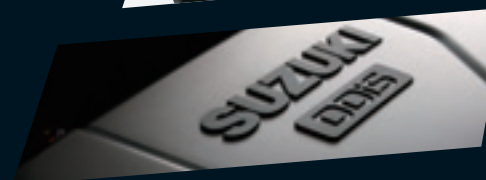
26. Range and colours



34. Accessories



36. History



38. Tech Specs



The front left corner of a white car is visible on the left side of the image, showing the headlight, side mirror, and front wheel. The car is positioned against a background of bold, diagonal blue and black stripes.

**WHEN IT COMES
TO LOOKS,**

**you've either got them
or you haven't.**

DYNAMIC STYLING

that's distinctly different
from every angle.

When it comes to looks, the Swift's got plenty to outshine the competition. Its sporty styling gives it a certain something that makes you want to admire it again. And again.

But while image is important, functionality is too.

There's the wide stance on the Swift that not only turns heads, but also contributes to its great handling. At the back you'll notice its distinct flared rear, offering more elbow room for passengers. And while we're sure you've already checked them out, there's a sharp set of 16" alloy wheels* sitting pretty under each of the Swift's flared wheel arches.

All in all it's a stunning car that's been designed to make driving more fun. And you'll look great driving around in it too.

*SZ3 and SZ4 models only.







DETAILS *you'll want to show off.*

Every angle of the Swift's smart exterior has been well thought out to work flawlessly and look the part.

Take the wrap-over headlamps. Like a pair of designer shades, they accentuate the front line of the car, confidently gazing back at you every time you look at them. While the vertical rear combination lamps get on with the job, beautifully.

Body coloured door handles and heated door mirrors (which can be electronically adjusted) blend seamlessly into the Swift's side profile. And, although you'll get used to people staring longingly at your Swift as you drive past, finishing touches like rear privacy glass* come in handy too.

Style and substance? Brains and beauty? You can never have too much.

*SZ4 models only.



ACCESSORISE WITH: SPORT STYLE FRONT SPOILER



SO GOOD INSIDE

you won't want to get out.







WELL HELLO

introducing an interior you'll
relish getting to grips with.

Ready to get up close and personal? Then let's focus on the Swift's stylish and functional interior. One look at its sleek dashboard with matt finish and silver trim, and you'll instantly appreciate the thought we put into the detail.

Then of course as you drive, you don't want to be focused on anything else but the road ahead. That's why we've designed everything on the dash to be instantly visible and intuitively to hand. There are audio controls on the steering wheel and the meters are clustered together clearly. Then there's the advanced audio equipment which has Bluetooth phone and music connectivity* to make calling and listening to music hassle (and hands) free.

The steering wheel also comes leather covered, there's a USB socket for your MP3 player and even automatic air con*. It's like travelling in first class on every journey.

*SZ4 models only.



The image shows the interior of a Swift motorhome. The front seats are black with a textured, ribbed fabric. The rear bench seat is also black and appears to be a 60/40 split seat. The dashboard and steering wheel are visible on the left side. The overall interior is dark and modern.

BEST SEATS IN THE HOUSE

at the front or back.

Whether you're in the driver's seat, passenger seat or travelling in the back, there's plenty of space in the Swift to get comfy. The textured upholstery is slick and sporty throughout, and the front seats come with side bolsters for extra support.

There's enough head and elbow room for even your tallest friends and loads of clever storage ideas for your smallest bits and bobs. Look around and you'll spot practical bottle and cup holders and deep door pockets. Take a closer look and you'll find a compartment hidden in the dash, ideal for storage that needs to be kept within easy reach. There's also the flexibility of a 60/40 split rear seat, which comes in handy when you've got passengers in the back and long pieces of luggage too.

The Swift is so lovely on the inside you'll probably never take a short cut to anywhere ever again.

WANT MORE? Here are a couple of nice little extras.

The Swift's fun-to-drive attitude and responsive handling mean you might find yourself taking the long route more often. Thankfully, with cruise control* it's like having your very own co-pilot on the road with you. It makes long distance driving less of a feat and more of a treat. Just set it to your chosen speed and cruise.

Then there's its keyless entry system with engine start button*. Provided the key fob is in your bag or pocket, the car starts at the touch of a button. So no faffing around looking for them and wasting time when you could be on your way.

*SZ4 models only.

ACCESSORISE WITH: PIONEER® MULTIMEDIA UNIT





PERFORMANCE TO BE PROUD OF

always puts on a great show.







BORN TO PERFORM

it's Swift by name and by nature.

The Swift is a car designed to perform impeccably when you're out with it. It's responsive, agile and streetwise. Here's why.

It's built using high strength steel for a light and strong body. This ensures it's robust, yet still easy to manoeuvre when you're whizzing around town or winding through the country. Its wide stance and low centre of gravity enhance the car's handling and its set up ensures a smooth journey, even when the road up ahead isn't. Then there are the aerodynamics that have been designed to make it quiet and efficient. Giving you plenty of opportunity as you're driving to relish the fact that owning a Swift is one of the best decisions you ever made.

ENGINES WITH PLENTY OF PULLING POWER

you'll fancy one of them.



**When it comes to performance the Swift packs a punch.
And you don't have to be a petrol head to appreciate it.**

The 1.2 litre petrol engine, available with manual or automatic* transmission, is made using the latest weight-saving technologies and materials. This means plenty of flexibility and response every time you set off. Yet power doesn't have to come at a cost (to you or the Earth), as it also boasts some of the lowest CO₂ emissions in its class. Spotted a Swift at a petrol station recently? Possibly not, as outstanding fuel economy means it's never greedy at the pump.

Then there's the 1.3 litre diesel engine. With its impressive performance and fuel efficiency figures plus low CO₂ emissions, it's got all the verve you'll want.

You'll find out exactly what we mean when you take a test drive. All we ask is that you remember to give the car back.

*SZ4 models only.

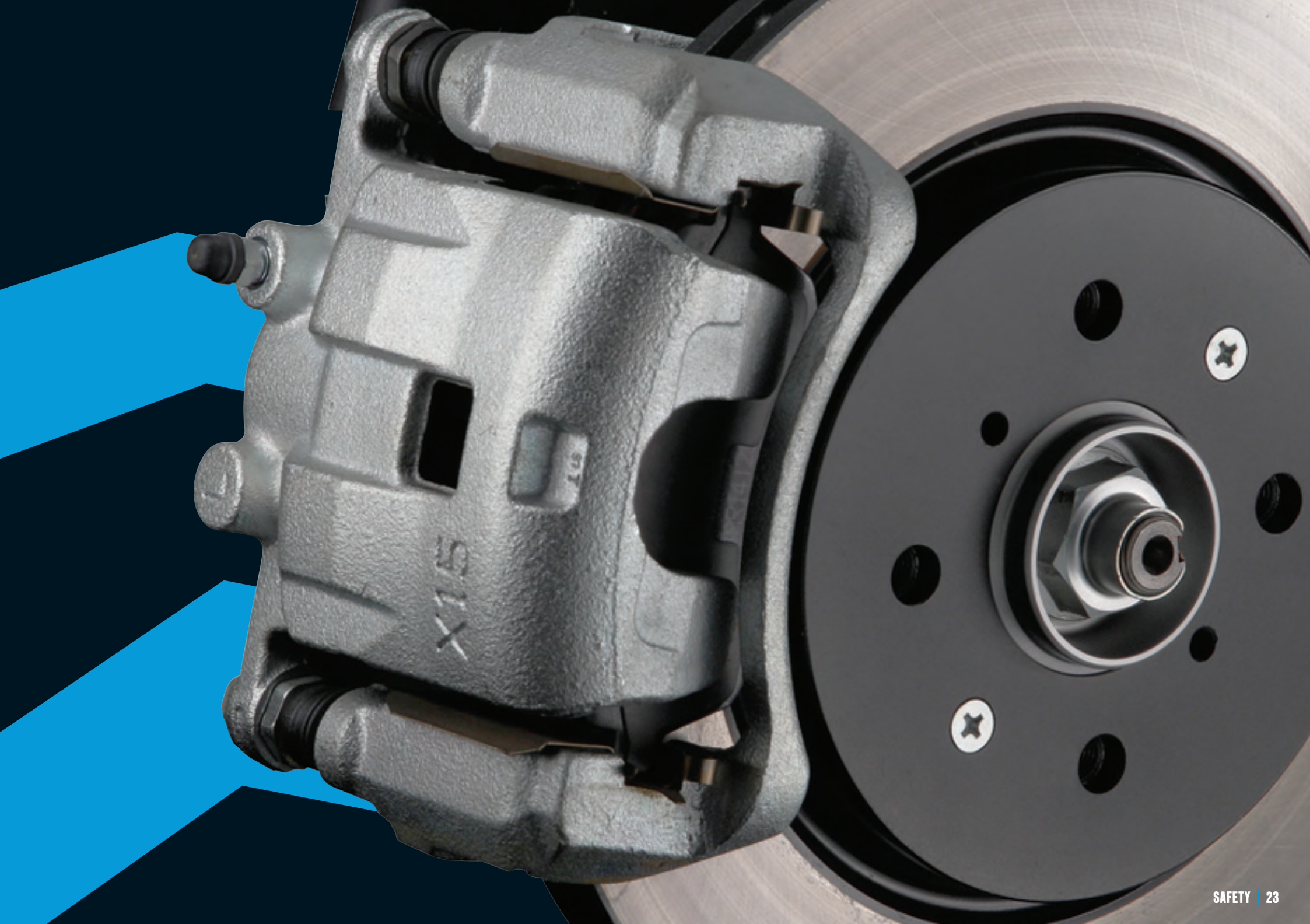


REALLY SMART SAFETY

comes
as standard.

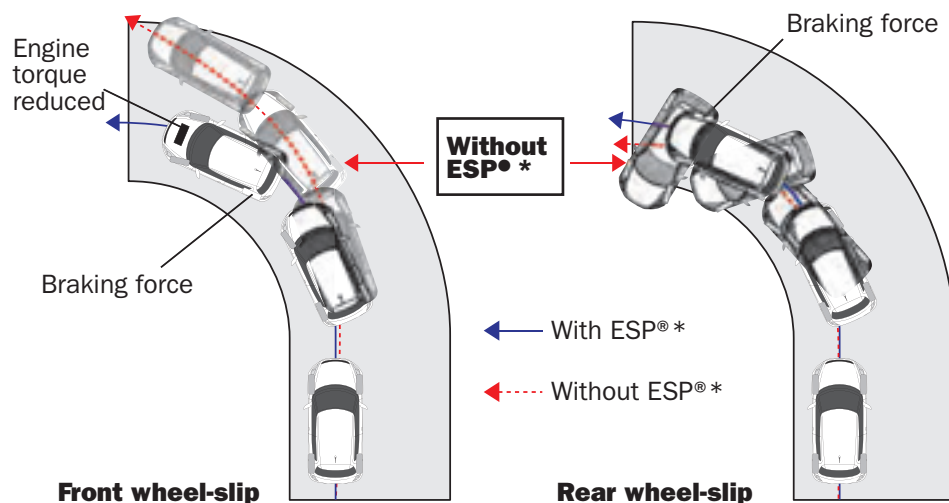
Safety is a massive priority for Suzuki and a key feature that's instinctively built-in to everything we do. In fact Euro NCAP has awarded the Swift the maximum five-star ranking. So when you drive, you're in safe hands.





INTELLIGENT AND RESPONSIVE

safety features you can rely on.



Every journey you make in your Swift needs to be fun. But it needs to be safe too. That's why we've built a host of safety features into the car, each one designed to perform impeccably.

So you'll find seven airbags, side impact protection beams and ESP* (Electronic Stability Program) which detects and reduces loss of traction. There's ABS and EBD (Electronic Brake-force Distribution), a system that varies the amount of force applied to each of the brakes when needed. For precious cargo, there are ISOFIX child seat points and on the five-door model, childproof rear door locks.

And because we know what it can be like when you're concentrating on driving, with Automatic Headlights** you don't need to worry about a flat battery if you forget to turn them off. They instinctively turn on and off when needed, too.†

Remote central locking, immobiliser and deadlocks come as standard on all models. So in a Swift, you can feel genuinely safe and secure at all times.



*ESP is a registered trademark of Daimler AG.

**S24 models only. †This function works when headlights are set to automatic.



**ONE SIZE
DOESN'T
FIT ALL**

**so we have a range of
models to choose from.**



INDIVIDUALITY IS BRILLIANT because we're all a little bit different.

Depending on what you're looking for from your Swift, we've got a range of models to choose from. Each one comes with its own unique features, so you can pick your car to suit you.



SWIFT SZ2

Here's what you get as standard:

- ESP*
- ABS with EBD and Brake Assist function
- Driver & front passenger airbags
- Front passenger airbag deactivation system
- Driver knee airbag
- Side airbags (incorporated into front seats)
- Curtain airbags
- Remote central door locking
- Rear seat with 60:40 split
- 3-spoke leather covered steering wheel
- Electrically adjustable & heated door mirrors
- MP3/WMA compatible CD tuner with USB connection
- 4 speakers and 2 tweeters
- Body coloured exterior door handles and mirrors
- 15" Steel wheels with full wheel caps

**3 door or 5 door 1.2 Petrol
Manual available**

*ESP® is a registered trademark of Daimler AG.



SWIFT SZ3

As standard with the SZ2:

- ESP*
- ABS with EBD and Brake Assist function
- Driver & front passenger airbags
- Front passenger airbag deactivation system
- Driver knee airbag
- Side airbags (incorporated into front seats)
- Curtain airbags
- Remote central door locking
- Rear seat with 60:40 split
- 3-spoke leather covered steering wheel
- Electrically adjustable & heated door mirrors
- MP3/WMA compatible CD tuner with USB connection
- 4 speakers and 2 tweeters
- Body coloured exterior door handles and mirrors

And add these with the SZ3:

- Manual air conditioning
- 16" alloy wheels

**3 door or 5 door 1.2 Petrol Manual
and 5 door 1.3 DDiS Manual available**

*ESP® is a registered trademark of Daimler AG.



SWIFT SZ4

As standard with the SZ3:

- ESP*
- ABS with EBD and Brake Assist function
- Driver & front passenger airbags
- Front passenger airbag deactivation system
- Driver knee airbag
- Side airbags (incorporated into front seats)
- Curtain airbags
- Remote central door locking
- Rear seat with 60:40 split
- 3-spoke leather covered steering wheel
- Electrically adjustable & heated door mirrors
- MP3/WMA compatible CD tuner with USB connection
- 4 speakers and 2 tweeters
- Body coloured exterior door handles and mirrors
- 16" alloy wheels

And add these with the SZ4:

- Front fog lamps
- Automatic air conditioning
- Electric rear windows (5dr only)
- Front map light
- Telescopic adjustable steering wheel
- Keyless entry
- Engine start button
- Cruise control
- Bluetooth integrated into audio unit
- Automatic headlamps
- Rear privacy glass

**3 door or 5 door 1.2 Petrol Manual
and 5 door 1.2 Petrol Automatic available**

*ESP® is a registered trademark of Daimler AG.





INTRODUCING THE SWIFT SPORT

Pick up a brochure for more details.

GET SOME COLOUR IN YOUR LIFE.

Make your mark with one
of these colour options.



Superior White



Bright Red



Kashmir Blue Pearl Metallic



Smokey Green Metallic



Sunlight Copper Pearl Metallic



Cool White Pearl Metallic



Silky Silver Metallic



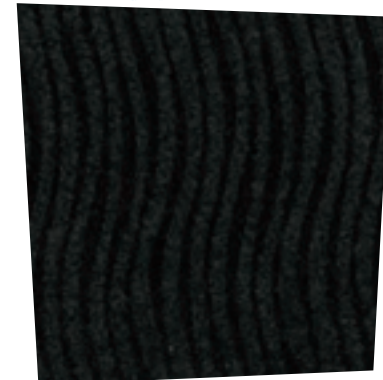
Galactic Grey Metallic



Cosmic Black Pearl Metallic



Silverstone trim



EXPRESS YOURSELF

with accessories and details, just make it fun.



No two Swifts need to look the same thanks to our range of stunning accessories that you can mix and match. And you'll find all of them on our website. So for once, we're going to suggest you let your fingers do the walking to: www.suzuki.co.uk/cars/mysuzuki/my-accessories



ALL WEATHER MAT SET



BOOT SILL GUARD - STAINLESS STEEL



COLOUR CODED SIDE BODY MOULDING SET



DOOR SILL TRIM SET



'FRANKFURT' 17" ALLOY WHEEL



SPORTS STYLE FRONT SPOILER



DELUXE CARPET MAT SET



SPORTS STYLE REAR UPPER SPOILER



SPORTS STYLE SIDE SKIRT SET



ALLUMINIUM FINISH GEAR KNOB



SPORTS STYLE REAR LOWER SPOILER



SIDE BODY MOULDING SET

OVER A CENTURY OF ENGINEERING MILESTONES.

1909

inspiration

Suzuki Founded: Michio Suzuki founds the Suzuki loom works in the small Japanese village of Hamamatsu.

He creates a loom that is different from the rest. It's faster, more productive and easier for everyone to use. It came from a philosophy about a way of life that no one had considered before. Michio Suzuki believed in innovative technology for people.



1952

original

First Motor Vehicles: Suzuki is now established as one of the world's leading manufacturers and Michio Suzuki turns to everyday life for inspiration.

He discovers the need for affordable and reliable transport. He develops an inventive two-wheeled bicycle powered by an engine, and works on innovative prototypes for a car that is compact as well as practical to drive. Transport now becomes Michio Suzuki's main focus.



1955

ground breaking

The Suzulight: Following the success of Suzuki motorcycles, an even more successful automobile is launched.

The Suzulight breaks the mould with front wheel drive, four wheel independent suspension and rack and pinion steering.



1965

new waters

Suzuki Outboard motors:

Suzuki establishes themselves in the outboard motor field by launching their D55 2-stroke and Fronte 800 outboard motors.



1970

original

Jimny 4x4 debuts & Kosia automobiles plant is born: Bringing the first 'real' 4x4 into the market, Suzuki unveils the Jimny.

It allows more and more people to explore off-road, and the car soon becomes a keen favourite amongst drivers.



1976

popular

Alto Debuts: The first generation Alto breaks into the automobile market with a competitive price.

Its combination of compact design and value gains it much publicity with it regarded as a "micro sensation."



1980

legendary

GSX Debuts: Suzuki release the GSX-series.

An evolution of the GS, the GSX contains a powerful 4-valve engine, with the early four-cylinder engines being commonly regarded amongst the most reliable motorcycle engines ever mass-produced.



1983

crowd favourite

Swift Debuts: Premiering at the 1983 Tokyo Motor Show, the Swift starts life with many different names across the world.

Ranging from Geo Metro to Margalla. Originally classed as a supermini or supercompact, the success of the Swift has evolved into a hatchback, a sedan and even a convertible.



1988

small and tough

Grand Vitara Debuts:

Known under a variety of names worldwide, such as Suzuki Escudo, Sidekick, Geo Tracker and simply Vitara, the Grand Vitara bridges the gap between the small car and the traditional 4x4.

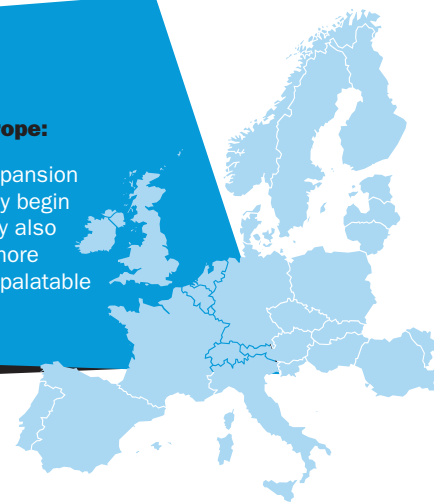


1990

development

Suzuki ventures into Europe:

In a bid to continue with expansion and innovation the company begin to expand into Europe. They also change their name to the more internationally friendly and palatable Suzuki Motor Corporation.



2002

celebrity

Suzuki Liana gains fame as Top Gear track car:

The Top Gear test track hosts the Suzuki Liana as their reasonably priced car. Many celebrities graced the wheel including Michael Gambon, Michael McIntyre and Jimmy Carr with the fastest non-professional lap being won by Ellen McArthur, completing the lap in 1 minute 46.7 seconds.



2004

sporty and stylish

Swift compact unveiled:

The second generation Swift makes its entrance at the Paris Motor Show. The Swift marks a significant departure from the 'Cultus-based' model and becomes much more sporty and stylish.



2005

fun

Swift is Car of the Year:

The Swift is presented with a special achievement award of Japan's 'Most Fun car of the Year' in 2005.

2009

centenary

100 years of innovation:

Suzuki reaches its centenary, remembering its humble beginnings Suzuki commemorates its years of innovation and success.



Good to know, means good to go. With Suzuki, getting your new car is just the start. Because we'll help you make the most of the journey now and in the future too. Here's a quick heads up of what we can offer.

WARRANTY.
IT'S ABOUT TRUST.

Every new Suzuki comes with a comprehensive three year or 60,000 mile warranty (whichever comes first) and a twelve year anti-perforation warranty[†]. The warranty is also transferable to other owners too. So they can also have peace of mind.

ROADSIDE RECOVERY.
WE'LL BE RIGHT THERE.

We're always around if you need breakdown assistance too – from the flat tyre, to the unforeseen accident. New cars come with a one year Suzuki Assistance plan provided by the AA Suzuki Assistance team. The cover includes 24 hour Roadside and Homestart cover, with European assistance too.

TALK TO US.

Our Customer Services Team could talk all day about your Suzuki. From the product range to services for drivers, they can fill you in on everything.

So if you've got a question, just get in touch on 0845 850 8800 or at Suzuki GB PLC, Steinbeck Crescent, Snelshall West, Milton Keynes, Bucks MK4 4AE.

[†]Jimny comes with 6 year perforation warranty.

Technical Specifications

MODEL		3 Door 1.2 Petrol Manual	5 Door 1.2 Petrol Manual	5 Door 1.2 Petrol Auto	5 Door 1.3 DDiS Manual
Available Grades		SZ2, SZ3, SZ4	SZ2, SZ3, SZ4	SZ4	SZ3
Engine	Type	K12B	K12B	K12B	D13A
	Number of cylinders	4	4	4	4
	Number of valves	16	16	16	16
	Piston displacement	cm3	1,242	1,242	1,248
	Maximum output	PS (kW)/rpm	94 (69)/6,000	94 (69)/6,000	94 (69)/6,000
	Maximum torque	Nm (lbft)/rpm	118 (87)/4,800	118 (87)/4,800	118 (87)/4,800
	Fuel distribution	Multi Pt	Multi Pt	Multi Pt	Direct Inj
	EU emission standard	Euro 5	Euro 5	Euro 5	Euro 5
Transmission	Type	5-speed manual	5-speed manual	4-speed automatic	5-speed manual
	Gear ratio	1st	3.454	3.454	2.875
		2nd	1.857	1.857	1.568
		3rd	1.280	1.280	1.000
		4th	0.966	0.966	0.697
		5th	0.757	0.757	-
		Reverse	3.272	3.272	2.300
	Final gear ratio	4.388	4.388	4.375	3.736
Weights & Dimensions	Tyres	175/65R15 (SZ2) 185/55R16 (SZ3,SZ4)	175/65R15 (SZ2) 185/55R16 (SZ3,SZ4)	185/55R16	185/55R16
	Overall length	mm	3,850	3,850	3,850
	Overall width	mm	1,695	1,695	1,695
	Overall height	mm	1,510	1,510	1,510
	Wheelbase	mm	2,430	2,430	2,430
	Minimum turning circle	m	9.6 (SZ2) 10.4 (SZ3, SZ4)	9.6 (SZ2) 10.4 (SZ3, SZ4)	10.4
	Ground clearance	mm	140	140	140
	Seating capacity	Persons	4	5	5
	Luggage capacity (seatback folded, VDA)		512	528	528
	Luggage capacity (seatback raised, VDA)		211	211	211
	Kerb weight inc full options	kg	1,005	1,020	1,040
	Gross vehicle weight	kg	1,480	1,480	1,480
	Max towing weight (braked)	kg	1,000	1,000	200
	Max towing weight (un-braked)	kg	400	400	200

Finance

We put as much thought into keeping things easy on your pockets as we do into making cars that are easy on the eye. That's why we have developed a number of affordable finance packages.

1. Finance packages from one to five years. We know you love choices, that's why we let you choose the period that works best for you. ¹
2. Fixed interest rates,² which ensure your payments won't change during the loan period, so you'll know where you are at.
3. Fixed payments, allowing you to budget ahead and avoid any surprises.
4. Or fancy driving away a new car every two or three years? Suzuki Finance Driveplan, our Personal Contract Purchase product, gives you this benefit.³
5. And you'll be in good company. Suzuki Finance is part of Black Horse Group which is part of Lloyds Banking Group.

Drop in to your local Dealer, pull up a chair and crunch some figures. The coffee might not be blended to perfection, but you can be sure there will be a finance offer to suit your palate.

Finance is available to persons aged 18 years or over, subject to status. Indemnities may be required. Suzuki Finance, St William House, Tresillian Terrace, Cardiff CF10 5BH.

1 Ask your Dealer about the latest offers.

2 Ask your Dealer for the latest terms and conditions.

3 Car to be returned to your Suzuki Dealer on time, in good condition (fair wear and tear accepted) and within the Permitted Maximum Mileage.

MODEL			3 Door 1.2 Petrol Manual	5 Door 1.2 Petrol Manual	5 Door 1.2 Petrol Auto	5 Door 1.3 DDIS Manual
Performance & Economy	Maximum speed	mph	103	103	99	103
	0-62 mph	seconds	12.3	12.3	13.5	12.7
	Fuel tank capacity	litres	42	42	42	42
	CO ₂ emissions	g/km	116	116	128	109
	Urban	mpg (l/100km)	46.3 (6.1)	46.3 (6.1)	41.5 (6.8)	55.4 (5.1)
	Extra-Urban	mpg (l/100km)	64.2 (4.4)	64.2 (4.4)	57.6 (4.9)	78.5 (3.6)
	Combined	mpg (l/100km)	56.5 (5.0)	56.5 (5.0)	50.4 (5.6)	67.3 (4.2)

Equipment

Standard with SZ2:

SAFETY

- ABS with EBD and Brake Assist function
- ESP® (Electronic Stability Program) *
- Driver & front passenger airbags
- Front passenger airbag deactivation system
- Side airbags (incorporated into front seats)
- Curtain airbags
- Driver knee airbag
- Front 3-point ELR seatbelts with pretensioner, force limiter and height adjuster
- Rear 3-point ELR seatbelts
- Foot-protecting brake and clutch pedals
- Side impact protection beams
- High mounted stop lamp
- ISOFIX child seat anchorages
- Child seat tether anchorages
- Childproof rear door locks
- Temporary spare wheel/tyre

SECURITY

- Immobiliser
- Remote central door locking
- Deadlocks
- Freewheeling key cylinders
- Visible VIN

COMFORT & CONVENIENCE

- Driver seat height adjuster
- Electric front windows with drivers side auto-down
- Rear seat with 60:40 split
- Front accessory socket
- Front sun visors with vanity mirrors
- Front assist grips x 2
- Rear assist grips x 2

- Power steering
- Tilt-adjustable steering wheel
- Tachometer
- Digital clock
- Outside temperature display
- Fuel consumption display (average/instantaneous) and range display
- Remote fuel lid opener
- Low fuel warning lamp
- Lights-on and key-in reminder
- Centre cabin light
- Luggage area lamp
- Front seatbelt warning lamp & alarm

HEATING & VISIBILITY

- Pollen filter
- Front wiper with adjustable intermittent
- Rear wiper with intermittent
- Halogen multi-reflector headlamps
- Headlamp levelling
- Electrically adjustable, heated door mirrors

STORAGE

- 3 cup holders
- Glove box
- Upper storage tray with lid
- Front passenger side seatback pocket
- Ticket holder (on drivers sun visor)
- Centre console with storage
- Storage pocket with bottle holder, all doors

ENTERTAINMENT

- MP3/WMA compatible CD tuner
- USB socket
- 4 speakers & 2 tweeters
- Steering wheel mounted audio controls
- Rear roof mounted antenna

STYLING

- 15" Steel wheels with full wheel caps
- Green-tinted glass
- 3-spoke leather covered steering wheel
- Body colour ext door handles and mirrors
- Black-coloured A & B pillars

Additional with SZ3

HEATING & VISIBILITY

- Manual air conditioning

STYLING

- 16" Alloy wheels

Additional with SZ4

SAFETY

- Hill hold control feature (automatic only)

COMFORT & CONVENIENCE

- Cruise control
- Electric rear windows (5 door only)
- Telescopic adjustable steering wheel
- Front map light

HEATING & VISIBILITY

- Automatic air conditioning
- Front fog lamps
- Automatic headlamps

STYLING

- Rear privacy glass

TECHNOLOGY

- Keyless entry with engine start button
- Bluetooth integrated into audio unit

*ESP® is a registered trademark of Daimler AG.

READY TO TAKE A TEST DRIVE?

You may not want to give the car back.



VISIT YOUR LOCAL AUTHORISED SUZUKI DEALER OR WWW.SUZUKI.CO.UK/CARS

Specifications shown have been achieved by production models under standard operating conditions. Data is intended to describe vehicles and their performance fairly, but may not apply to every vehicle. Colours, specifications and equipment may vary without notice. All details correct at time of going to press: June 2012. Vehicles shown throughout this brochure are for illustration only and may feature non-UK equipment.

Suzuki GB PLC, Steinbeck Crescent, Snelshall West, Milton Keynes, Bucks MK4 4AE. Suzuki Contact Centre: 0845 850 8800 (calls may be recorded or monitored)



Way of Life!