

New
SWIFT
DZIRE

Desire again.——



MARUTI  **SUZUKI**
Way of Life!

Desire again.——

It's back and it's better. The new DZire has it all - ultra-comfort, captivating good looks and all the power and efficiency you desire. Its compact body comes packed with performance features and thoughtful conveniences that make each drive unforgettable.



Dressed up desires

A toned, stylish aesthetic dominates the exterior of this head-turner. Several functional elements have been added to the exterior in a way that complements the new DZire's distinctive good looks.



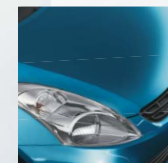
Sporty fog lamps

The black matte-finish around the fog lamps gives a sporty edge to the new DZire.



Motion theme alloy wheels

The alloy wheels boast a new-age pinwheel style that expresses the dynamism of the car.



Hawk-eye headlamps and front grille

Shapely and bold, the DZire's powerful headlamps lead the way in style. While the signature front grille announces your arrival with assertion.



Integrated spoiler

The aerodynamically designed pinch spoiler integrated into the boot adds to the stability and style of the car.



Rear combination lamps

Along with the side panel and boot, these combination lamps form a distinct and appealing U-shape at the rear.



Built-in indicators on ORVMs

A neatly tucked-in turn indicator is incorporated on the Outside Rear View Mirrors to give them a great new look.



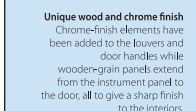
Desirable inside

Elegant and ergonomically designed, the new DZire's spacious interiors are warm and inviting - the perfect environment to indulge your desires.



Dual-tone interiors

The new DZire's rich colour-tone, warm beige against a stark black, enhances the spaciousness and classiness of its interiors.



Unique wood and chrome finish

Chrome-finish elements have been added to the louvers and door handles while wooder-grain panels extend from the instrument panel to the door, all to give a sharp finish to the interiors.



Tilt-adjustable steering wheel

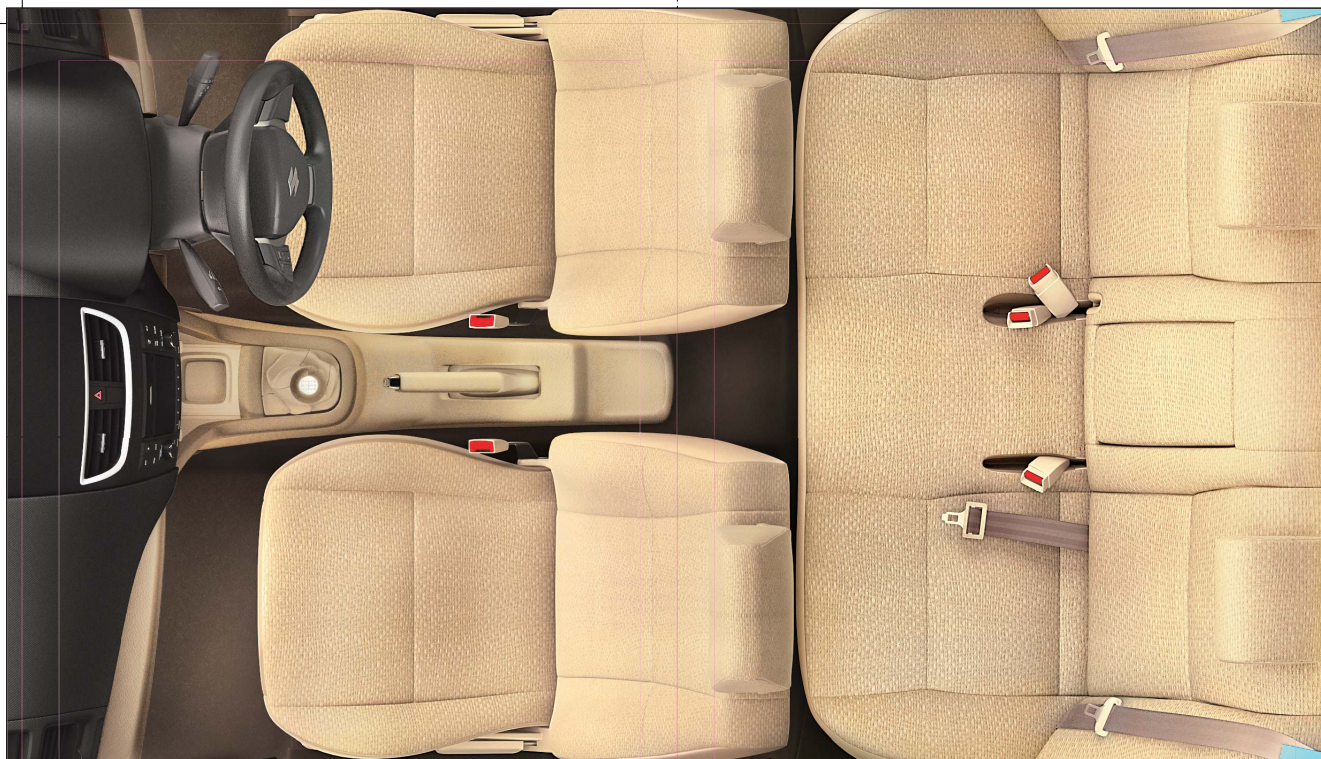
The steering wheel has great adjustability and can be arranged to suit each driver's posture.



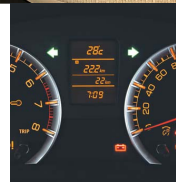
Fresh new instrument cluster

The sporty new instrument panel has a meter cluster with silver embellishments and 3D acrylic graduations that look even better when illuminated.





Every comfort you desire



Multifunction display

The meter clusters on the instrument panel have a liquid-crystal information display with easy-to-read amber characters. This displays the instantaneous and average fuel consumption, range on remaining fuel, odometer, trip meter, outside temperature and time.



Accessory socket and USB port

The new DZire allows you to attach your mobile phone chargers and GPS devices through the 12V accessory socket, and plug in flash-drives and MP3 players in the USB port.



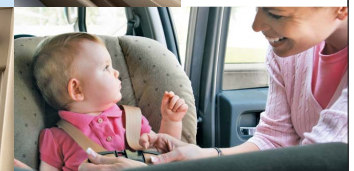
Electronically controlled ORVMs

A sleek lever placed on the driver-side door console lets you control the Outside Rear View Mirrors with ease.



Automatic climate control

On-board computers auto-adjust to the weather outside to maintain a precise and comfortable cabin temperature.



Retractable cup-holder

The retractable cup-holder, placed in the dashboard is extremely convenient for the front-seat passenger, and can be pushed in when not in use.



Advanced audio system
The new DZire comes fitted with an integrated audio system (CD, AM/FM, USB) that has concert-quality sound, a large-format display with illuminated buttons and auto volume control.

Power to be desired

Available in both diesel and petrol versions, the new DZire's got all the power and efficiency you could desire.



VVT

K-12 series petrol engine

The new K-12 engine comes loaded with the impressive Variable Valve Timing (VVT) technology. This mechanism orchestrates valve opening and closing in a way that gives better power and efficiency, smooth acceleration and a quicker response.

DDiS

D13A diesel engine

This diesel engine is one of the most evolved and refined ones around. The D13A incorporates a common-rail injection system and an inter-cooled turbo charger for superior performance and efficiency.



Automatic transmission for an easy drive

For the first time, the DZire comes with the option of automatic transmission. This enables an effortless and smooth driving experience.



Efficient braking system

The new 15" ventilated front disc and rear drum brakes, along with the Brake Assist System (BAS), give greater braking efficiency even in emergency situations.

Front

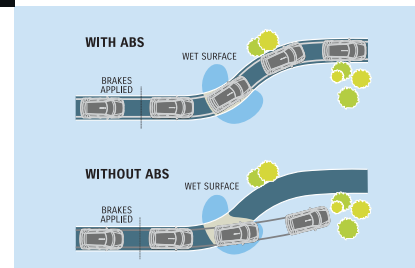


Rear



Steady suspension

The DZire promises a more enjoyable, steady drive. The front (MacPherson strut with coil spring) and the rear (Torsion-beam with coil spring) suspensions, give higher mounting rigidity and confident stability.



Indestructible desires

The new DZire has been designed keeping the highest standards of safety in mind, making the car a fortress on wheels.

Airbags

Airbags installed for the driver and front-passenger ensure that they are cushioned in case of a head-on collision.

ABS

The Anti-lock Braking System (ABS) with brake assist and Engine Drag Control (EDC), prevents skidding and ensures a minimum stopping distance even on the most slippery roads.

Rigid body structure

The improved body rigidity of the car ensures superior handling and a comfortable ride. This adds to the sense of absolute safety for passengers.





New
Pacific Blue

Colour your desires

Choose the colour of your desires,
from any of these eye-catching colours.



New
Glistening Grey



Arctic White



Clear Beige



Bright Red



Midnight Black



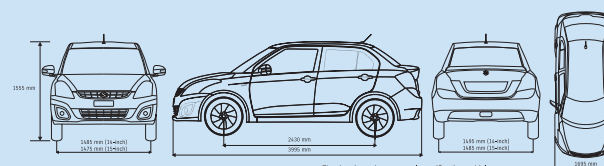
Silky Silver

Colour may vary from actual body colour
due to printing on paper.

SPECIFICATIONS

	Petrol	Diesel
Body Type		
Body type	Notch back	Notch back
Seating capacity	5	5
Engine		
Type	K-Series Petrol engine with VVT	DDiS Diesel Engine
Displacement (cc)	1197	1248
Number of cylinders	4	4
Number of valves	16	16
Fuel distribution	Multipoint injection	CRDi (Common Rail Direct Injection)
Bore (mm) x Stroke (mm)	73 x 71.5	69.6 x 82
Compression ratio	10.0:1	17.6:1
Maximum power (PS@rpm)	87@6000	75@4000
Maximum torque (Nm@rpm)	114@4000	190@2000
Air charging system	Naturally aspirated	Fixed geometry turbo charger with intercooler
Emmission	BSIV	BSIV
Weight		
Kerb weight (Kg)	960 (LXi) 970 (VXi) 990 (Automatic) 990 (ZXi) Manual: 1415 Automatic: 1435	1050 (LDi) 1060 (VDi) 1080 (ZDi) Manual: 1505
Transmission		
Type	5 MT/4 AT	5 MT
Fuel tank capacity (L)	42	42
Dimensions		
Overall length (mm)	3995	
Overall width (mm)	1695	
Overall height (mm)	1555	
Wheel base (mm)	2430	
Front tread (mm)	1485 (14" wheel) 1475 (15" wheel)	
Rear tread (mm)	1495 (14" wheel) 1485 (15" wheel)	
Ground clearance (mm)	170	
Turning radius (m)	4.8	
Steering		
Steering type	Rack and Pinion	
Power steering type	EPS & Tilt	
Suspension		
Front	MacPherson Strut	
Rear	Torsion Beam	
Brakes		
Front	Ventilated disc	
Rear	Drum	
Tyre size		
Steel (LXi/LDi/VXi/VDi and Automatic)	165/80R14	
Alloy (ZXi/ ZDi Grade)	185/65R15	

Car line drawings



The drawings show general specification vehicle.

Petrol MT 19.1 Km/lt.	Diesel MT 23.4 Km/lt.
Petrol AT 17.4 Km/lt.	

*As certified by Test Agency Under Rule 115 of CMVR 1989.

FEATURES

			LXI/LDI	VXI/VDI/AT	ZXI/ZDI
Safety and security	Driver and passenger airbag		-	-	√
	ABS with Brake Assist and EBD		-	√ (AT only)	√
	Front ELR seat belts with pretensioners (with shoulder height adjuster)	3-point type (Dr + CoDr)	-	-	√
	Rear 3-point seat belts (including centre)	Centre 2 point	√	√	√
	Rear door child-locks		√	√	√
	Security alarm system	Door + hood sensing	-	√	√
	Immobilizer		√	√	√
Instrument panel and console	Tachometer		-	√	√
	Speedometer		√	√	√
	Seat belt reminder (driver seat)	Lamp	√	√	√
	Light-on reminder, buzzer	With buzzer	√	√	√
	Key-on reminder, buzzer	With buzzer	√	√	√
	Door closure warning lamp		√	√	√
	Digital clock	Multi-functional display	√	√	√
	Fuel consumption (instantaneous)	Multi-functional display	√	√	√
	Fuel consumption (average)	Multi-functional display	√	√	√
	Outside temperature display	Multi-functional display	-	-	√
	Trip/odometer	Multi-functional display	√	√	√
	Accessory socket		√	√	√
	Low fuel warning lamp		√	√	√
	Retractable cup-holder in IP (1 co-driver side)		√	√	√
Steering	Cup-holder in front console (1 cup-holder)		√	√	√
	Power steering	Electrical power steering	√	√	√
	Tilt/able steering wheel column		√	√	√
	Double horn		√	√	√
	Steering wheel mounted audio control		-	-	√
Seat	Seat height adjuster	Driver Side	-	-	√
	Seat back pocket	Dr + Co Dr	-	√	√
	Front head restraint		√	√	√
	Rear seat head restraint	Integrated	√	√	√
HVAC	Centre armrest	Rear seat	-	√	√
	Manual AC		√	√	-
Audio	Auto AC		-	-	√
	Antenna		√	√	√
Door	Radio+CD+USB		-	√	√
	Speaker (Fr x2+Rr x2=4)		-	√	√
	Tweeter (2)		-	-	√
	Front door power window		-	√	√
	Rear door power window		-	√	√
	Driver seat power window / auto switch	Auto down only	-	√	√
	Central door lock		-	√	√
	Key-less entry		-	√	√
	Inside chrome door handles		-	√	√
	Body coloured door handles		-	√	√
	Remote back door opener		√	√	√
	Day and night IRVM		-	√	√
	Internally adjustable ORVMs	Manual	-	Electric	Electric
	ORVM mounted side turn indicator		-	√	√
Interior	Body colored ORVMs		-	√	√
	Front door trim pocket		√	√	√
	Glove box		√	√	√
	Folding assistant grip (3 nos)	(Psg Side + Rear)	√	√	√
	Sun visor (2 nos)	(Driver + Co. Driver)	√	√	√
	Ticket holder	(Driver Side)	√	√	√
	Remote fuel lid opener		√	√	√
Exterior	Passenger side vanity mirror (sun visor)		-	√	√
	Body coloured bumper		√	√	√
Lighting	Mud guard (Fr and Rr)		-	√	√
	Front fog lamp		-	√	√
	Rear fog lamp		-	√	√
	High mounted stop lamp		√	√	√
	Room lamps		√	√	√
Windshield	Luggage lamps		√	√	√
	Green tinted glass		√	√	√
	Front 2 speed+fixed intermittent wipers		√	√	√
	Rear window defogger		-	-	√

Maruti Suzuki India Limited reserves the right to change without prior notice prices, colours, equipment specifications and models and also to discontinue models. Accessories shown in the pictures may not be part of standard equipment. For variant specific features refer to equipment list.





MARUTI  **SUZUKI**

Way of Life!