



# THE NEW SWIFT SPORT

Way of Life!



# Want more? Get more

Life moves fast. So you want a car that can do more than just keep up, you want one that can push the pace. That's where the New Swift Sport comes in. Designed with all the sharp looking, fun driving DNA of the Suzuki Swift, it delivers more punch, more features and a lot more attitude. And with a great price tag and low running costs, you'll have plenty more left over to spend on having the way of life you want.







# New Swift Sport. New adventures

Whether it's heading into town to meet up with friends or heading out of the city for a well earned weekend break, the New Swift Sport is a car that delivers on all fronts. It's a Supermini, but there's nothing small about the sporty 1.6 litre engine and the superb handling. It's a car that doesn't compromise either, combining performance, practicality and economy with striking good looks. It's a unique car, and we took our time to design it just right, but within seconds of pushing the engine start button you'll know you've made the right choice.



**Green Fact #01** At Suzuki, we're passionate about the three Rs, - reduce, reuse and recycle.







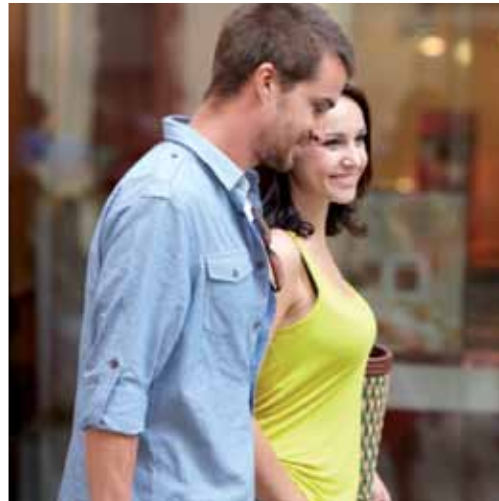


# Stunning looks that provide stunning performance

**Green Fact #02** We're undertaking environmental impact reduction activities at all of our production plants – planning for tomorrow, today.



The Swift Sport's low-slung stance and accentuated bodywork give an instant understanding of its sporty nature and devilish attitude. A high quality metallic paint finish adds a layer of class, while its compact, 3 door design makes getting around town and parking in tight spaces a breeze. But it isn't all just for show. The diffuser with dual exhaust and rear wing spoiler improves aerodynamics and helps the car hold the road. It also reduces drag, improving fuel efficiency and lowering CO<sub>2</sub>. It's one good reason why the Swift Sport really stands out from the crowd, another is the choice of finish. There's 5 colours to choose from, allowing you to add your own personal touch. And if you want to be truly original, try the all new Ablaze Red Pearl Metallic.









**Green Fact #03** We are investing in hybrid and fuel cell technologies to significantly reduce carbon emissions – putting more in to getting less out.

# What you see is what you get

Loads of options usually means loads of extra cost. The Swift Sport is different, it gives you everything as standard. Things like High Intensity Discharge headlamps that offer a more powerful beam for increased safety on the road. There's also electronically folding door mirrors which makes parking in a tight spot a lot easier. Sporty 17" alloys provide an eye catching base for the car and compliment other stylish features like the body coloured exterior mirrors, door handles, spoiler and side sill covers. A large front grille and bold front and rear bumpers are guaranteed to turn heads while the finned fog lamps, headlamps and rear combination lamps have anthracite accents for a dynamic look. The rear roof spoiler and twin exhausts complete the picture, giving the Swift Sport extra edge to go with its premium feel.



# Feel good inside

The sports seats inside the spacious cabin instantly put you in the mood for driving. The high quality finish can't help but make you feel good, while touches like carbon fibre appearance in the centre console and stainless steel sport pedals give an authentic sporty feel. But the Swift Sport is practical as well, with 211 litres of boot space, which extends to a roomy 512 litres with the seats folded down. It may be compact, but it can handle a few suitcases or a load of shopping with ease. And while the car may be built around the driver, it never forgets the passengers, which is why it can comfortably seat four adults. Just jump in and press the engine start button – everything else is taken care of.

The new Swift Sport has dynamic looks, but also dynamic attention to detail. The leather covered steering wheel allows for a natural grip and easier handling, and includes red stitching for a genuine sporty look. It's a style that continues throughout the cabin, with exclusive seat trim fabric, a dynamic instrument panel design and steering wheel clusters that mean wherever you look, it looks exciting. With 3 cup holders, a ticket holder on the sun visor, seatback pockets, coat hooks and glove box, you may run out of stuff before you run out of storage. For a comfortable drive there's automatic air conditioning while cruise control takes the fatigue out of long journeys, letting you set your preferred speed and resulting in better fuel economy. Bluetooth allows you to make hands-free phone calls and an MP3/WMA compatible CD tuner with 4 speakers, 2 tweeters and a USB port allows you to listen to your music with ease. Finally, keyless entry and engine start button means there's no more fumbling around for keys in your bag or your pocket.

## Red interior stitching

The leather covered steering wheel allows for a natural grip and easier handling, and includes red stitching for a genuine sporty look.







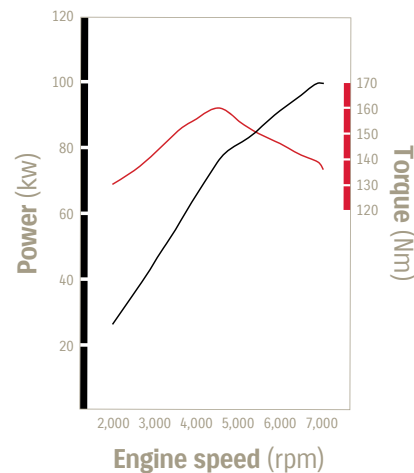




# More power. More torque. Less emissions. More 'Yes!'

The Swift Sport's updates begin with an exclusively revised exhaust system for the 1.6 VVT petrol engine. This means it can provide an exhilarating 0-62 mph in 8.7 seconds and handle a maximum speed of 121mph. It has also been cleverly engineered to deal with the reality of city driving and low speed limits, so there's a whole new level of responsiveness when taking on the town. There's better performance than ever before thanks to increased valve lift, providing 160Nm of torque and total power of 136PS. All this thrilling power is effortlessly controlled via a new 6 speed manual gear box, which gives a seamless transmission of power and acceleration. The Swift Sport is built for performance, but it's also built for efficiency with fuel consumption on a combined cycle of up to 44.1mpg. That means less money on fuel, lower CO<sub>2</sub> emissions at 147g/km and therefore less road tax.

A better engine demands better suspension and stability. Stiffer coil springs and the use of MONROE® shock absorbers mean more responsive handling and reduced body roll. Stability is further improved by a longer wheelbase. And for added grip there's low profile tyres which don't just perform brilliantly, they look brilliant too.

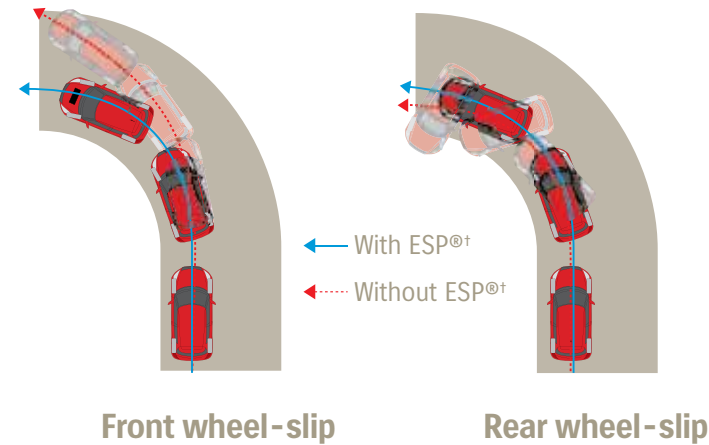






# Maximum safety shouldn't cost a thing

With the Swift Sport, advanced safety features are fitted as standard. It all starts with the stiff yet light body, based on Suzuki's Total Effective Control Technology, which absorbs and disperses impact forces. High-tensile steel keeps the body light in weight but offers masses of reassurance for you. Roll angles have been reduced by 15%, meaning more confidence when taking on tight corners. For a compact car the Swift Sport is big on airbags, with 7, including curtain airbags and one protecting the driver's knee. Further safety is provided by ESP<sup>®</sup> (Electronic Stability Programme) which helps to prevent skidding during an emergency manoeuvre. Add ABS (Anti-lock Brake System) to keep the car under control when braking hard and EBD (Electronic Brake-force Distribution) that varies the force applied to the brakes and it makes for a confident journey, wherever you're heading. And to protect your little sports drivers of the future, there's ISOFIX child seat anchorages included as well.







# Accessories

It's the details that really do make the difference and adding detail to your stunning New Swift Sport couldn't be easier with the choice of Suzuki Genuine Accessories

Find out more at: [www.suzukigenuineaccessories.co.uk](http://www.suzukigenuineaccessories.co.uk)



## Carpet mat set

Protect and enhance the appearance of your New Swift Sport with this set of high-quality carpet mats. With red stitching and Sport logos, this 4-piece mat set perfectly compliments the red detailing that highlights the interior of the New Swift Sport.



## Silver door trim set

You already know the interior of the New Swift Sport has a great feel good factor. Adding this stylish and practical door sill trim set, complete with red Sport logo, will add that little extra personality.

# Add some colour

Colourful characters can certainly make a place more interesting.  
Time to make your mark with these colour options.



Ablaze Red Pearl Metallic



Silky Silver Metallic



Cosmic Black Pearl Metallic



Kashmir Blue Pearl Metallic



Cool White Pearl Metallic





## Front sport seats combining comfort with increased support

The new swift sport features unique front seats that compliment the cars handling. Red stitching and 'Sport' logo emphasise their sporty shape.

Sport trim



Lovely  
to have

Technical Specification

|   |                 |                      |
|---|-----------------|----------------------|
| ENGINE                                      |                 |                      |
| Type  |                 | 1.6 Petrol           |
| Number of cylinders                         |                 | 4                    |
| Number of valves                            |                 | 16                   |
| Piston displacement                         | cc              | 1,586                |
| Maximum output                              | PS (kW) / rpm   | 136 (100) / 6,900    |
| Maximum torque                              | Nm (lbft) / rpm | 160 (118) / 4,400    |
| Fuel distribution                           |                 | Multipoint Injection |
| EU emission standard compliance             |                 | Euro 5               |
| TRANSMISSION                                |                 |                      |
| Transmission type                           |                 | 6MT                  |
| TYRES                                       |                 |                      |
| Tyres                                       |                 | 195 / 45 R17         |
| WEIGHTS AND DIMENSIONS                      |                 |                      |
| Kerb weight with full options               | kg              | 1,045                |
| Gross vehicle weight                        | kg              | 1,480                |
| Overall length                              | mm              | 3,890                |
| Overall width                               | mm              | 1,695                |
| Overall height                              | mm              | 1,510                |
| Wheelbase                                   | mm              | 2,430                |
| Minimum turning circle                      | m               | 10.4                 |
| Ground clearance                            | mm              | 130                  |
| Seating capacity                            | persons         | 4                    |
| Luggage capacity rear seatback folded (VDA) | litres          | 512                  |
| Luggage capacity rear seatback raised (VDA) | litres          | 211                  |
| PERFORMANCE                                 |                 |                      |
| Maximum speed                               | mph             | 121                  |
| 0-62 mph                                    | secs            | 8.7                  |
| Fuel tank capacity                          | litres          | 42                   |
| CO <sub>2</sub> emissions                   | g/km            | 147                  |
| Urban                                       | mpg (l/100km)   | 33.6 (8.4)           |
| Extra-Urban                                 | mpg (l/100km)   | 54.3 (5.2)           |
| Combined                                    | mpg (l/100km)   | 44.1 (6.4)           |

# Equipment

## SAFETY

ABS with EBD  
Brake assist function  
ESP® (Electronic Stability Program)  
Driver and front passenger airbags  
Front passenger airbag deactivation system  
Side airbags (incorporated into front seats)  
Curtain airbags  
Driver knee airbag  
Front 3-point ELR seatbelts with pretensioner, force limiter and height adjuster  
Rear 3-point ELR seatbelts  
Foot-protecting brake and clutch pedals  
Side impact protection beams  
High mounted stop lamp  
ISOFIX child seat anchorages  
Child seat tether anchorages  
Front fog lamps

## SECURITY

Immobiliser  
Remote central door locking with boot open function  
Deadlocks  
Freewheeling key cylinders  
Visible VIN  
Central door locking switch

## COMFORT AND CONVENIENCE

Electric front windows with driver's side auto-down  
Front sport seats  
Driver's seat height adjuster  
Driver's side footrest  
Single folding rear bench seat  
Front accessory socket  
Front sun visors with vanity mirrors  
Front driver and passenger side assist grips  
Rear assist grips x 2  
Power steering  
Tilt and telescopic adjustable steering wheel  
Tachometer  
Digital clock  
Outside temperature display  
Fuel consumption (average/instantaneous) and range display  
Remote fuel lid opener  
Low fuel warning lamp  
Lights-on and key-in reminder alarm  
Driver's and front passenger seatbelt warning lamp and alarm  
Door ajar warning lamp

Front map light and centre cabin light  
Luggage area lamp  
Flat tyre repair kit (replaces spare wheel)

## HEATING, VENTILATION AND VISIBILITY

Automatic air conditioning  
Pollen filter  
Two speed front wiper with adjustable intermittent  
Single speed rear wiper with intermittent  
HID projector headlamps with headlamp washers  
Automatic headlamp levelling  
Electrically adjustable, heated and folding door mirrors  
Rear fog lamp

## STORAGE

Glove box  
3 cup holders (1 x front, 2 x rear)  
Upper storage tray with lid  
Centre console with storage  
Storage pocket with bottle holder in front doors and rear trim  
Front passenger side seatback pocket  
Ticket holder (on sun visors)

## TECHNOLOGY

Automatic headlamps  
Keyless entry with engine start button  
Bluetooth integrated into audio unit  
Cruise control

## STYLING

Body coloured exterior mirrors and door handles  
Body coloured tailgate mounted roof spoiler  
Body coloured side-sill covers  
Black-coloured A & B pillars  
Green tinted glass  
Rear privacy glass  
17" Alloy wheels  
Leather covered, multi-function steering wheel  
Chrome inside door opener  
Stainless steel sports pedals  
Dual exhaust pipes  
MONROE® shock absorbers††

## IN-CAR ENTERTAINMENT

MP3 / WMA compatible CD tuner with  
4 speakers and 2 tweeters  
Steering wheel mounted audio controls  
USB port  
Roof mounted antenna

# Finance

## Easy on the eye. Easy to buy

We put as much thought into keeping things easy on your pockets as we do into making cars that are easy on the eye. That's why we have developed a number of affordable finance packages.

1. Finance packages from one to five years. We know you love choices, that's why we let you choose the period that works best for you\*.
  2. Fixed interest rates<sup>^</sup>, which ensure your payments won't change during the loan period, so you'll know where you are at.
  3. Fixed payments, allowing you to budget ahead and avoid any surprises.
  4. Or fancy driving away a new car every two or three years? Suzuki Finance Driveplan, our Personal Contract Purchase product, gives you this benefit\*\*.
  5. And you'll be in good company. Suzuki Finance is part of Black Horse Group which is part of Lloyds Banking Group.
- Drop in to your local Dealer, pull up a chair and crunch some figures. The coffee might not be blended to perfection, but you can be sure there will be a finance offer to suit your palate.

Finance is available to persons aged 18 years or over, subject to status. Indemnities may be required. Suzuki Finance, St William House, Tresillian Terrace, Cardiff CF10 5BH.

\*Ask your Dealer about the latest offers.

<sup>^</sup>Ask your Dealer for the latest terms and conditions.

\*\*Car to be returned to your Suzuki Dealer on time, in good condition (fair wear and tear accepted) and within the Permitted Maximum Mileage.



Good to know, means good to go. With Suzuki, getting your new car is just the start. Because we'll help you make the most of the journey now and in the future too. Here's a quick heads up of what we can offer.

## Warranty. It's about trust.

Every new Suzuki comes with a comprehensive three year or 60,000 mile warranty (whichever comes first) and a twelve year anti-perforation warranty<sup>^</sup>. The warranty is also transferable to other owners too. So they can also have peace of mind.

## Roadside recovery. We'll be right there.

We're always around if you need breakdown assistance too – from the flat tyre, to the unforeseen accident. New cars come with a one year Suzuki Assistance plan provided by the AA Suzuki Assistance team. The cover includes 24 hour Roadside and Homestart cover – with European assistance too.

## Talk to us.

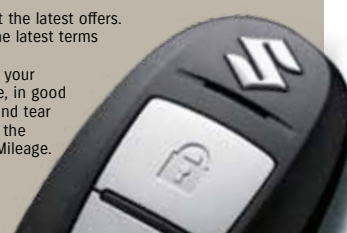
Our Customer Services Team could talk all day about your Suzuki. From the product range to services for drivers, they can fill you in on everything.

So if you've got a question, just get in touch on **0845 850 8800** or at Suzuki GB PLC, Steinbeck Crescent, Snelshall West, Milton Keynes, Bucks MK4 4AE.

<sup>^</sup>ESP® is a registered trademark of Daimler AG.

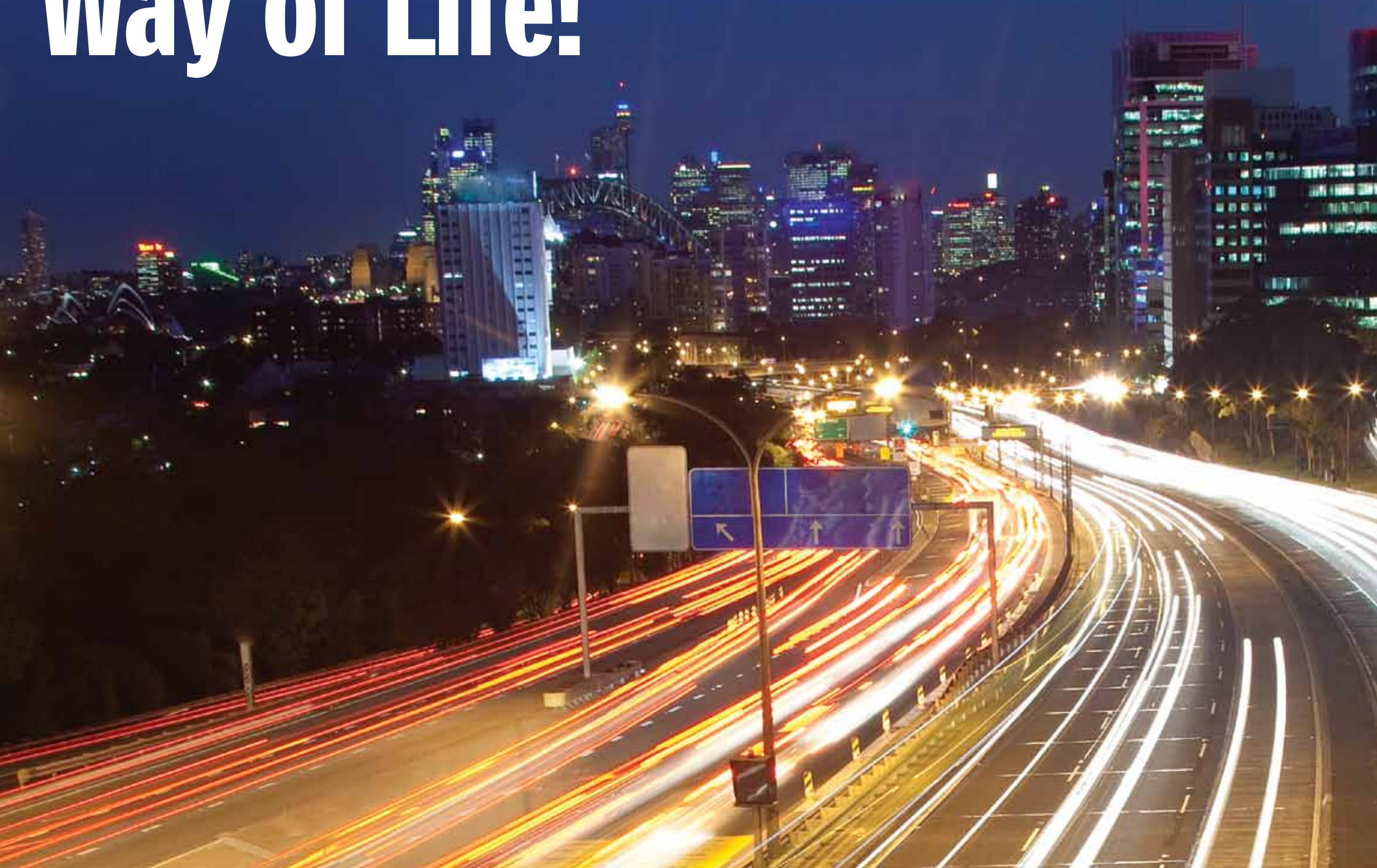
<sup>††</sup>MONROE® is a registered trademark of Tenneco.

<sup>^</sup>Jimny comes with 6 year perforation warranty.





# Way of Life!









Suzuki sell

# 2.6million

cars worldwide per year,  
more than BMW and Mercedes



experience suzuki online: [www.suzuki.co.uk](http://www.suzuki.co.uk) Suzuki GB PLC, Steinbeck Crescent, Snelshall West, Milton Keynes, Bucks MK4 4AE Suzuki Contact Centre: 0845 850 8800 (calls may be recorded or monitored).

Specifications shown have been achieved by production models under standard operating conditions. Data is intended to describe vehicles and their performance fairly, but may not apply to every vehicle. Colours, specifications and equipment may vary without notice. \*ESP® is a registered trademark of Daimler AG. \*\*MONROE® is a registered trademark of Tenneco. All details correct at time of going to print: December 2011. Vehicles shown throughout this brochure are for illustration only and may feature non-UK equipment.

Search /SuzukiCarsUK



SPORT-BROCH-000