



*Kizashi*



Way of Life!







## **A welcome distinction**

Kizashi – a Japanese word – translates as a sign of great things to come, a sign that distinct change is close. The Kizashi is all about changing the perception of what a sedan should be and superseding the norm with exceptional style.

## The soul of sport in the style of a sedan

The Kizashi has all the great looks of a luxury sport sedan – an aerodynamic body with strong, clean lines, a three-dimensional grille design and silver finished headlamps. All of its curves and design touches add to the power and grace with which it moves. Precisely created with cutting-edge technology, the Kizashi heightens expectations and then surpasses them.







1. **Front grille:** Sportiness and refinement meet in the deep, three-dimensional mesh design and smoked-look finish of the front grille.
2. **Exhaust covers:** The Kizashi's distinctive stainless-steel exhaust covers were inspired by Suzuki's world-beating sportbike designs.
3. **Headlamps:** In the headlamps, the connected rings with a silver finish were inspired by jewellery; the lenses and other elements create beautifully contrasting visual textures.
4. **Wheels:** Even when the Kizashi is stationary, its sporty 18-inch aluminium-alloy wheels communicate dynamism and class.



## Enter distinction. Welcome to luxury.

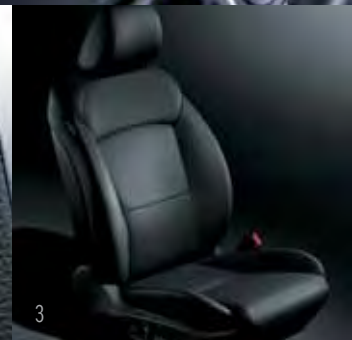
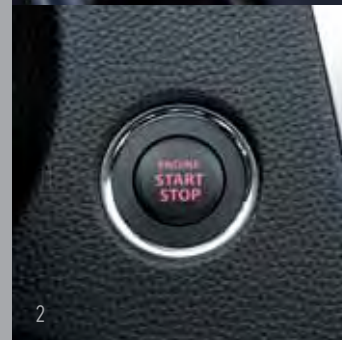
The exterior of the Kizashi should tip you off to the comfort inside. With extraordinary technology and elegant design, the Kizashi sedan distinguishes itself from others in its class, while staying true to the values of Japanese design and functionality.



## Experience total focus.

From the moment you settle into the Kizashi's 10-way power-adjustable driver's seat, you'll feel one with distinction. At a glance, you'll notice the sporty instrumentation and the minimalistic design. The switches and controls are all positioned exactly where you'd intuitively expect to find them. Every colour, every texture, every design choice you'll see is subdued, refined, distinctive. The instrument panels boast symmetry in design, and the beautifully crafted satin finish on the shift lever, and other smaller details, are what make the car so inspiring. Its simplicity allows you to focus on the road, to enjoy the drive.

1. **Meters and controls:** Sporty instrumentation is centred on two cylindrically-shaped, backlit meters whose position helps you keep your eyes on the road. Steering-wheel-mounted controls for the audio and other systems also help you enjoy the drive without taking your eyes off the road. They include sports-car-style shift paddles for the continuously variable transmission (CVT).
2. **Keyless push start system:** Kizashi driving exhilaration begins with the push of a racing-car-style engine-start button.
3. **Driver's seat:** The 10-way power-adjustable driver's seat has a memory function that instantly restores your favourite position when someone else has driven the Kizashi.
4. **Shift lever:** Whether you choose a CVT or six-speed manual transmission, the shift lever is designed for a sporty and luxurious look and feel.





## At one with comfort

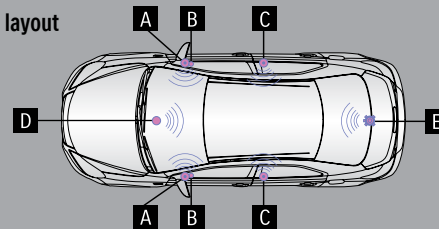
Enter the Kizashi, close the door and sink into luxury. The cabin features smart design and ergonomics that encompass every detail from the upholstery to the dual climate control. Inside the Kizashi, you can envelop yourself in comfort and forget the world outside until you're ready to conquer it.



**Audio system:** The high-end audio system delivers aural enjoyment through 8 speakers.



### Speaker layout



- A** Front midbass speakers
- B** Front tweeters
- C** Rear coaxial speakers

- D** Front centre speakers
- E** Subwoofer

To maximize the performance of the subwoofer, the partition panel is reinforced such that its rigidity suppresses unwanted vibration.



## The luxury of smart design

The Kizashi's peaceful cabin is the result of a design that suppresses outside noise from all directions.

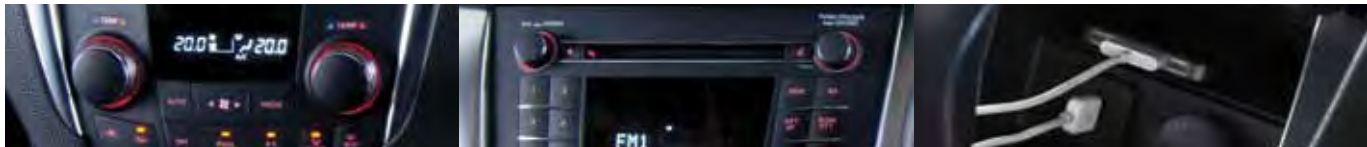
You'll appreciate the stillness and harmony all the more once you turn on the premium audio system.

In nearly every way imaginable, the Kizashi meets your wish for comfort. The upholstery is made of full leather facings with synthetic backs that reflect traditional Japanese expertise in textiles. And the automatic climate control is so advanced, it even takes the direction of sunlight into account when adjusting the temperature.

**Climate control:** The automatic climate control adds comfort for everyone. It even lets the driver and front passenger choose different temperatures.

**Audio controls:** An audio control panel with soft-touch buttons in a simple layout complements your listening pleasure.

**Storage:** The centre-lower box in the instrument panel contains a USB port and a power socket, making it an ideal spot for an iPod®\*1.



## Room for things large and small

On the road, you needn't want for anything because well-crafted storage spaces such as an overhead console tray are close at hand. The boot has an ample 461 litres of space, which you can easily use for diverse purposes thanks to a split rear seatback that can be folded down to expand the luggage space into the cabin.



**Boot:** The boot is big enough for four golf bags\*2 or one large and two medium-size suitcases\*3.

A boot-through opening in the rear seat lets you stow long items of luggage without folding the rear seat back.

\*1 iPod is a trademark of Apple Inc., registered in the United States and other countries. \*2 Two 229mm and two 240mm bags. \*3 Large: 700 x 480 x 270 mm. Medium: 560 x 450 x 250 mm.





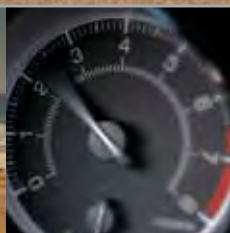
A silver Suzuki Kizashi is shown from a front-three-quarter view, parked on a dark, pebbly beach. The car's design features a large, multi-spoke alloy wheel, a prominent headlight, and a grille with the Suzuki emblem. The license plate area displays the word 'Kizashi' in a stylized script. In the background, a sandy beach leads to the ocean with gentle waves. Beyond the water, a range of rugged mountains is visible under a warm, hazy sky, suggesting a coastal setting like Table Mountain in South Africa.

## **New distinctive style. Same superb quality.**

There's a distinct difference in the Kizashi that separates it from others in its class, but it stays true to the same excellent Suzuki styling that has taken South Africa by storm. The same handling of other Suzuki cars is matched with a large boot and sleek body to create a car that epitomises beauty and function. It is a car like no other that takes the best of Suzuki and pairs it with the best in distinction.

# A welcome journey

With you at the helm, the Kizashi goes from beautiful artwork to powerful companion, ready to take you anywhere. Experience a soaring sense of freedom as you manoeuvre down the twists and turns of city roads. Absorb the stares of appreciation as you take the car to your favourite places. The continuously variable transmission (CVT) makes driving easy by constantly adjusting its operation to suit driving conditions. If you prefer, you can even choose a sport-tuned six-speed transmission. Need to negotiate a steep uphill? Hill hold control, only available on CVT, makes it possible.





## Technology for starting your senses

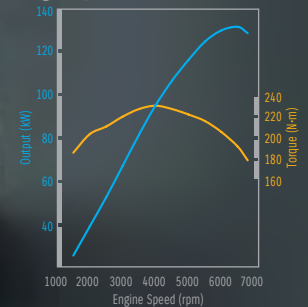
The Kizashi's confidence-inspiring performance comes via state-of-the-art technologies. A 2.4-litre engine developed especially for the Kizashi combines powerful performance with exceptional quietness and fuel economy. There's the choice of a six-speed manual transmission or a continuously variable transmission (CVT) that shifts automatically for great performance and fuel economy. And the suspension is designed to give a ride that balances sportiness with refinement.



**Transmission:** The continuously variable transmission (CVT) makes driving easy by constantly adjusting its operation to suit driving conditions. If you prefer, you can choose a sport-tuned six-speed manual transmission.



Engine performance curves



Maximum output

131/6,500 kW/rpm\*

Maximum torque

230/4,000 N·m/rpm

**Engine:** Cutting-edge refinements in the 2.4-litre engine mean the Kizashi offers powerful performance together with fuel economy.

**Suspension:** A highly rigid and light suspension system gives great handling. It has subframes with floating structures to ensure that the ride is also smooth and quiet.




MacPherson-strut front suspension

Multi-link rear suspension

**Honed on roads around the world:** The Kizashi's performance and handling reflect the benefits of testing and tuning conducted in diverse conditions around the world. For instance, Suzuki put the Kizashi through cold- and hot-weather trials in the United States and honed its handling and braking performance on autobahns, race circuits, and challenging country roads around Europe.

\* The maximum engine speed of the CVT is limited to 6,000rpm to protect the CVT system.



## Accident prevention – your first line of defence

With Suzuki technology you know you can trust, peace of mind will be your constant companion. Precise handling and ESP (Electronic Stability Programme) give you the control you need to prevent accidents wherever possible. The light body of the Kizashi means that when you brake, your Kizashi won't overshoot the mark, while six airbags and seatbelt pre-tensioners take care of you and your family in the event of a collision. Need a parking guide? The Kizashi's front and rear parking sensors alert you when you're too close to an obstacle, before it's too late.

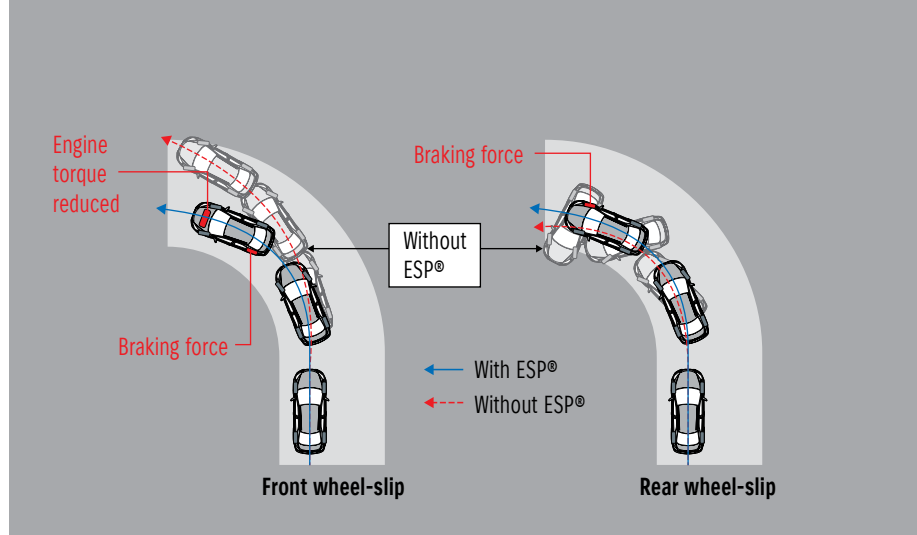
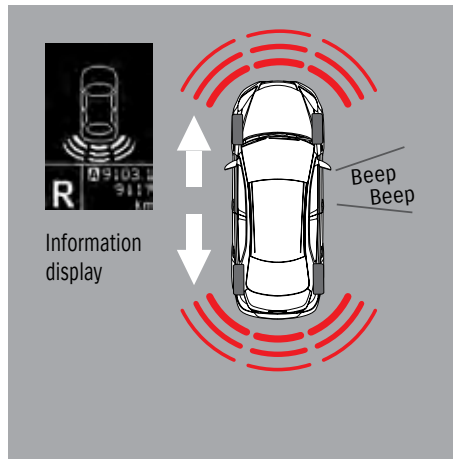




### ESP®(Electronic Stability Program)\*1:

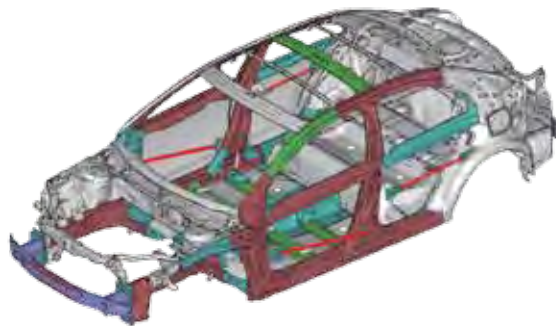
To maximise the driver's control and make driving safer in various conditions, an ESP® helps to prevent wheelspin and skids by applying control to the engine and brakes when necessary.

**Parking sensor system\*2:** To help you park, ultrasound sensors monitor the space behind and in front of the Kizashi and sound a beeper to warn you of any nearby obstruction. The length of the intervals between beeps shows the distance to the obstruction.



**SRS Airbags\*3:** Extensive protection in the cabin includes two front airbags, a side airbag in each front seat, and left and right curtain airbags.

**Body:** The Kizashi's body is light and strong thanks to extensive use of high-tensile steel. It combines structures that absorb and disperse impact energy with a deformation-resisting cabin structure. New advances over earlier bodies include greater underfloor strength for resistance to impact forces from all directions.



\* ESP is a registered trademark of Daimler AG. The ESP™ is designed to help keep the Kizashi under control. However, its effectiveness depends on the driving conditions and the road surface. If the tyres exceed their grip limit and the wheels start to spin or skid, it may not be fully effective.

## A car as distinctive as you are

The Suzuki Kizashi is distinctive in its segment. It is distinctive in style. It is distinctive in function. It takes a distinctive type of driver to control it. Kizashi is the car that suits those who live outside the confinements of what is expected, who go beyond the boundaries of normal and look to distinguish themselves wherever they are.







# Suzuki Kizashi Specifications

	2.4L VVT 6MT	2.4L VVT CVT
Drive system	2WD	2WD
Transmission	6MT	CVT

## Engine

Type	J24B	J24B
Number of cylinders	4	4
Number of valves	16	16
Piston displacement	cm³2 393	2 393
Bore x stroke	mm92.0 x 90.0	92.0 x 90.0
Compression ratio	10.0	10.0
Maximum output	kW/rpm131/6,500*	131/6,500*
Maximum torque	Nm/rpm230/4,000	230/4,000
Fuel distrubution	Multipoint injection	Multipoint injection
CO <sub>2</sub> emissions	186	187

## Dimensions

Overall length	mm	4 650	4 650
Overall width	mm	1 820	1 820
Overall height	mm	1 480	1 480
Wheelbase	mm	2 700	2 700
Tread	Front	mm	1 565
	Rear	mm	1 565
Minimum turning radius	m	5,5	5,5
Minimum ground clearance	mm	145	145

## Capacities

Seating capacity	persons	5	5
Luggage capacity	Rear seatback raised (VDA method)	litres	461
Fuel tank capacity	litres	63	63

## Transmission

Type		6MT	CVT
Gear ratio	1st	3,615	2.349-0.394
	2nd	2,047	2.349-0.394
	3rd	1,379	2.349-0.394
	4th	1,029	2.349-0.394
	5th	0,837	2.349-0.394
	6th	0,707	2.349-0.394
	Reverse	3,481	1,750
Final gear ratio		4,117	5,798

\* The maximum engine speed of the CVT is limited to 6000rpm to protect the CVT system.



Chassis		2.4L VVT 6MT	2.4L VVT CVT
Steering		Rack and pinion	Rack and pinion
Brakes	Front	Ventilated disc	Ventilated disc
	Rear	Solid disc	Solid disc
Suspension	Front	MacPherson strut	MacPherson strut
	Rear	Multi link	Multi link
Tyres		235/45R18	235/45R18

Weights			
Kerb weight	kg	1,490	1,530
Gross vehicle weight	kg	2 000	2 000

Performance			
Maximum speed	km/h	215	205
0-100 km/h*	sec.	7,8	8,8

Chassis			
Tyres and wheels	235/45R18 + aluminium-alloy wheels	🔌	🔌
Spare tyre and wheel	Full size	🔌	🔌

Visibility			
Headlamps	High-intensity discharge (HID) projector with washers	🔌	🔌
Headlamp leveling device	Automatic	🔌	🔌
Automatic lamps		🔌	🔌
Fog lamps	Front	🔌	🔌
Green-tinted windows		🔌	🔌
Wipers	Front: 2-speed (low, high) + auto (with rain sensor) + washer	🔌	🔌
Rear window demister		🔌	🔌
Outside door mirrors	Electrically adjustable	🔌	🔌
Auto-dimming rearview mirror		🔌	🔌

Steering and Instrument Panel			
Leather multifunction steering wheel	Audio switches	🔌	🔌
	Cruise-control switches	🔌	🔌
	Information display switches	🔌	🔌
Shift paddles		-	🔌
Tilt- and telescope-adjustable steering wheel		🔌	🔌
Information display integrated into meter cluster	Digital clock	🔌	🔌
	Outside temperature gauge	🔌	🔌
	Fuel consumption gauge (instantaneous/average)	🔌	🔌
	Distance until tank empty	🔌	🔌
	Average speed	🔌	🔌
	Gear position indicator	-	🔌

## Steering and Instrument Panel

		2.4L VVT 6MT	2.4L VVT CVT
Light-off and key reminder	Alarm	⚙	⚙
Driver's seatbelt reminder	Lamp	⚙	⚙
Door ajar reminder	Lamp	⚙	⚙
Low fuel warning	Lamp	⚙	⚙

## Driving Amenities

Electric windows	Front: auto up/down	⚙	⚙
Central door locking	Switch: Driver's side	⚙	⚙
Remote-control door locks	With hazard lamp answerback function	⚙	⚙
	With boot-open function	⚙	⚙
Keyless push start system		⚙	⚙
Automatic climate control with pollen filter	Dual-zone with driver and front passenger temperature controls	⚙	⚙
Rear vents + rear heater ducts		⚙	⚙
Audio	Speaker x 4 (front and rear door trims)	⚙	⚙
	Tweeter x 2	⚙	⚙
	Subwoofer x 1	⚙	⚙
	Dashboard-centre speaker x 1	⚙	⚙
	CD tuner + MP3 playback function	⚙	⚙
Cruise control		⚙	⚙
Sun roof		⚙	⚙

## Interior

Interior lighting	Map, Cabin, Rear	⚙	⚙
	Boot, Glove box, Footwell	⚙	⚙
Sun visors (both sides)	With ticket holders + vanity mirrors + illumination function	⚙	⚙
	With extension function	⚙	⚙
Assist grips	Driver's side x 1, passenger's side x 1, rear x 2	⚙	⚙
Coat hooks	Rear x 2	⚙	⚙
Cup and bottle holders	Front x 2, rear x 2	⚙	⚙
Sunglasses holder		⚙	⚙
Storage pockets	Front and rear doors	⚙	⚙
Centre console box		⚙	⚙
USB socket	Centre-lower box x 1	⚙	⚙
12V interior accessory sockets	Centre console box x 1, centre-lower box x 1	⚙	⚙

## Seats

Front seats	Seatback pockets (both sides)	⚙	⚙
	10-way power seat with 3-position memory system (driver's side)	⚙	⚙
	4-way power seat (passenger's side)	⚙	⚙
Rear seats	60:40-split single-folding	⚙	⚙
Seat upholstery material	Leather (including door trim)	⚙	⚙
Armrests	Centre console	⚙	⚙
	Rear seat centre (with boot-through)	⚙	⚙



Boot		2.4L VVT 6MT	2.4L VVT CVT
Load restraint hooks	Rope hooks x 4, net hooks x 2	🔧	🔧

### Safety, Security and Environmental Compatibility

SRS dual front airbags		🔧	🔧
SRS side airbags	Front	🔧	🔧
SRS curtain airbags		🔧	🔧
Energy-absorbing trim		🔧	🔧
Foot-protecting design	Brake and clutch pedals	🔧	🔧
Seatbelts	Front: 3-point ELR seatbelts with pre-tensioners, force limiters and height adjusters	🔧	🔧
	Rear: 3-point ELR seatbelts x 3	🔧	🔧
ISOFIX child seat anchorages	x 2	🔧	🔧
Child seat tether anchorages	x 3	🔧	🔧
Childproof rear door locks		🔧	🔧
Side impact door beams		🔧	🔧
ABS with EBD function		🔧	🔧
ESP <sup>*1</sup> (Electronic Stability Program)		🔧	🔧
Hill hold control		-	🔧
Brake assist function		🔧	🔧
Parking sensors	Front and rear	🔧	🔧
High-mount stop lamp		🔧	🔧
Immobiliser		🔧	🔧
Freewheeling key cylinders		🔧	🔧

### Colour combinations



Premium Silver Metallic



Snow White Pearl



Mineral Gray Metallic



Fervant Red

<sup>\*1</sup> ESP is a registered trademark of Daimler AG. The ESP™ is designed to help keep the Kizashi under control. However, its effectiveness depends on the driving conditions and the road surface. If the tyres exceed their grip limit and the wheels start to spin or skid, it may not be fully effective.







# SUZUKI

COMPLETE

Suzuki understands that purchasing a new vehicle is a substantial investment. Our unwavering commitment to customer satisfaction is represented in our Suzuki Complete programme, which includes every aspect of post sales support, comprising the warranty, service plan and roadside assistance as standard.

## Warranty

All Suzuki models are covered by a comprehensive manufacturer's warranty against any defects for a period of 3yrs or 100 000 km.

## Service Plan

The Kizashi benefits from a 6yr / 90 000 km service plan. This plan includes the replacement of oil, the oil filter, fuel filter, brake fluid, air filter and accessory belts, but excludes tyres, brakes and other wear-and-tear items.

## Roadside Assistance

In addition, every new car sold incorporates a 3yr roadside assistance plan, administered and operated by the Automobile Association of SA.

Amongst its many features, this comprehensive package incorporates around-the-clock AA road patrols, battery and locksmith call-out services, mechanical and electrical break-down towing (accidental towing is optional), emergency medical rescue and vehicle repatriation.

All care is taken to ensure the accuracy of this brochure at the time of print approval. Specifications, features, prices and model availability may vary from those specified and may change without notice. Always consult your authorised Suzuki Dealer or refer to [www.SuzukiAuto.co.za](http://www.SuzukiAuto.co.za) for the latest details on all models. SUZUKI AUTO South Africa (PTY) Ltd will not be held liable for any loss as a result of reliance on the content of this brochure, whether in negligence or otherwise. Vehicles are shown for illustrative purpose only and may not depict exact specifications. Published August 2011.

## Part number 9900L - 57L00 - BRO



SUZUKI AUTO South Africa (PTY) Ltd | Tel: 0861 511 111 | Fax: 086 635 3632

17 Enterprise Close, Linbro Business Park, Marlboro, 2090

PO Box 1995, Kelvin, South Africa, 2054 | [www.SuzukiAuto.co.za](http://www.SuzukiAuto.co.za)