



2010

Full Line



Way of Life!



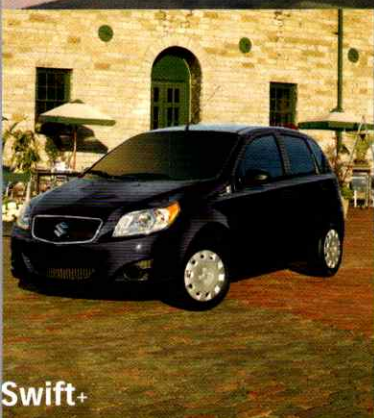
SX4 Hatchback



SX4 Sedan



Grand Vitara



Swift+

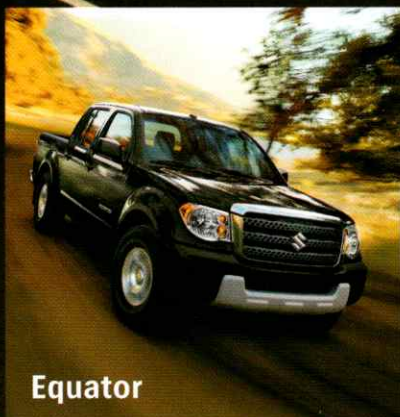
20
10



The All New Kizashi



kizashi.ca



Equator

Specifications

SPECIFICATIONS

Engine	2.4 Litre, 16 valve, 4 cyl.
Horsepower	180 hp @ 6,500 rpm
Torque	170 lb-ft @ 4,000 rpm
Transmission	CVT w/Manumatic Control
Fuel tank capacity	63 litres
Fuel Economy L/100 KM (MPG) City/Highway	9.3/6.8 (30/42)

MSRP*

SX	TBA
----	-----

FEATURES

iAWD (Intelligent All Wheel Drive)	Power driver's seat with 10 way adjustment (fore, aft, front/rear height, recline, lumbar)
SmartPass™ push button keyless entry and start system	Driver's seat 3 position memory
Rockford-Fosgate premium audio system with 8 speakers (including subwoofer)	Power front passenger seat with 4 way adjustment (fore/aft, recline)
Leather trimmed upholstery	Heated front seats (3 positions)
Dual zone automatic climate control system with dust & pollen filter	60/40 split-folding rear seatback with folding centre armrest
2-stage remote keyless entry with panic function and trunk release	Leather-wrapped steering wheel and shift knob
Power windows with driver and passenger side express up & down	Body-coloured bumpers, mirrors and door handles
Power door locks	Heated power mirrors
Cruise control with illuminated steering wheel mounted controls	Automatic headlight on/off
Tilt and telescopic steering wheel adjustments	Variable intermittent windshield wipers
Information display (outside temperature, fuel consumption & range)	Rain sensing windshield wipers
Auto-dimming rear view mirror	Fog lights
Dual front map lights with sunglass holder	Electric trunk release
Illuminated driver and passenger vanity mirrors	Dual exhaust outlets with integrated bright finishers
12 volt power outlets (2)	Dual front airbags
Dual front and rear cup holders	Dual front and rear seat mounted side airbags
Power glass sunroof with tilt/slide feature, one touch open/close and sunshade	Dual side-curtain airbags
Paddle shifters	Engine immobilizer theft-deterrent system
USB auxiliary audio input jack	Synergetic Vehicle Dynamics Control System
Speed sensing volume control	Four wheel disc brakes
Digital clock	ABS with Brake Assist and EBD (Electronic Brake-Force Distribution)
Illuminated steering wheel mounted audio controls	Rear Park Assist
Bluetooth hands free phone integration	3-point ELR seat belts (all 5 seating positions)
	Pre-tensioners for front seat belts
	Child safety rear door locks
	18 inch alloy wheels with Tire Pressure Monitoring System
	Temporary Spare Tire

Note: not all features listed are standard on all models

Kizashi



The Power of Control

From the moment you first steer the all new Kizashi onto the road, a unique sense of power rests in your hands. Manoeuvring the Kizashi feels seamless while every bend in the road appears as an opportunity to expand your growing sense of exhilaration and freedom. The Kizashi stirs and lifts the driver's spirits by delivering a faithful, confidence inspiring response to the driver's every input resulting in crisp, nimble handling and excellent stability. We call this experience the power of control.

KIZASHI

- Fun to drive
European tuned suspension
- Intelligent All Wheel Drive (iAWD)
- 18 inch alloy wheels
- Loaded with Luxury features

2010 Specifications

SPECIFICATIONS

	4 cyl.	V6
Engine	2.4 Litre 16 valve, 4 cyl.	3.2 Litre 24 valve, 6 cyl.
Horsepower	hp @ rpm 166 @ 6,000	230 @ 6,200
Torque	lb-ft @ rpm 162 @ 4,000	213 @ 3,500
Transmission (automatic)	4-speed	5-speed
Fuel Tank Capacity (litres)	66	66
Fuel Economy L/100 KM (MPG)		
Automatic City/Highway	11.2/8.6 (25/33)	12.5/8.6 (23/33)

FEATURES

Power, rack and pinion steering
Power windows with driver's express down
Power door locks
2-stage remote keyless entry with panic function
SmartPass™ keyless entry and start system
Air conditioning
Automatic climate control
Micron air filter
AM/FM/CD/MP3/WMA player with 6 speakers
Auxiliary audio input jack
Digital clock
Illuminated steering wheel mounted audio controls
Speed sensing volume control
XM satellite radio ready (optional receiver & antenna required)
Cruise control
Front independent MacPherson Strut and rear independent Multi-link suspension
Tachometer
Door ajar warning lamps
Seat belt reminders (driver & front passenger)
Information display (outside temperature, fuel consumption & range)
Light-off/key reminder
Warning indicators (low fuel, icy road)
Steering lock
Leather-wrapped steering wheel
Tilt steering wheel
Centre cabin light with fade-out (3 position)
Rear cabin light (3 position)
Front map lights
Rear cargo light (2 position)
Floor mats (front & rear)
Fabric seat material
Sun visors with extensions and vanity mirrors
Cup holders (2 front / 2 rear)
Bottle holders (2 in front doors)
Day / night rear view mirror
Reclining seats (front & rear)
Height-adjustable driver's seat
Split-folding rear seatbacks (60/40)
Front/rear head restraints (2/3)
Sliding front seat centre armrest with storage compartment

Front & rear door armrests
4 assist grips (2 front / 2 rear)
Front & rear door pockets
Front seatback pockets
Storage pockets (cargo area & tailgate)
Overhead console (JX only)
Accessory power outlets (console x 2, cargo area x 1)
Cargo area cover
Cargo area convenience hooks (4)
Coat hooks (2)
Driver's footrest
Halogen headlights (multi-reflector and projector)
Automatic headlights (on/off)
Privacy glass
Heated power mirrors
Variable intermittent wipers
Rear window wiper/washer with fixed intermittent
Rear window defroster with timer
Remote fuel door release
Body-coloured bumpers/mirrors/door handles
Roof rails
Hard full spare tire case with "Suzuki" logo
17 inch aluminum alloy wheels
Engine block heater
4 mode 4WD
Dual front airbags
Front seat-mounted side airbags
Side-curtain airbags
ABS with EBD (Electronic Brake-Force Distribution)
Centre high-mounted rear stop lamp
Brake assist
Front and rear ventilated disc brakes
ESP** (Electronic Stability Program) with traction control
Engine immobilizer
3-point ELR seat belts (all 5 seating positions)
Height adjustable front seat belt anchors
ISO-FIX child safety seat provisions (2 rear)
Childseat tether anchorage (3 rear)
Child-proof rear door locks
Daytime running lights
Side impact beams

MSRP*

4 cyl. JX AT	\$27,995
4 cyl. JLX AT	\$29,495
4 cyl. JLX-L AT	\$30,495
V6 JLX AT	\$32,195
V6 JLX-L AT	\$33,195

JLX 4 cylinder adds

Power glass sunroof with tilt and slide feature
Front door courtesy lights
Heated front seats
Fog lamps
AM/FM/CD/MP3/WMA player (7 speakers plus subwoofer)

JLX-L 4 cylinder adds

Leather trimmed upholstery (JLX-L only)

JLX V6 adds

3.2 litre V6 engine
5-speed automatic transmission
Hill hold and Hill descent control
18 inch aluminum alloy wheels

JLX-L V6 adds

Leather trimmed upholstery

**ESP is a registered trademark of Daimler AG

2010 Grand Vitara



For those who want it all

Follow your road – regardless of where it may lead you – with the 2010 Suzuki Grand Vitara. Whether navigating campground trails, or getting yourself or the kids to practice, this authentic SUV is designed to move at your speed of life. Choose between two powerful, yet fuel-efficient engines that offer unparalleled flexibility. Add to this a versatile cargo area, a refined, spacious interior, and class-leading towing capacity.

2010 GRAND VITARA AT A GLANCE

- Powerful 4 or 6 cylinder engine options
- An authentic SUV designed to impress
- Highest towing capacity in its class
- 4 mode 4WD offers unrivalled control

2010 Specifications

SPECIFICATIONS - Base

Engine	2.0 Litre, 16 valve, 4 cyl.
Horsepower	150 hp @ 6,200 rpm
Torque	140 lb-ft @ 4,000 rpm
Transmission	6-speed manual CVT w/Manumatic Control
Fuel Tank Capacity	50 litres
Fuel Economy L/100 KM (MPG)	
6MT City/Highway	9.1/6.3 (31/45)
CVT City/Highway	8.2/6.4 (34/44)

FEATURES

Power, rack and pinion steering
Power windows with driver's express down
Power door locks
2-stage remote keyless entry with panic function
Air conditioning
AM/FM/CD/MP3/WMA player (4 speakers)
Tilt steering wheel
Auxiliary audio input jack
Digital clock
Speed sensing volume control
XM satellite radio ready (optional receiver & antenna required)
Driver and front passenger seat-mounted armrests
Front MacPherson Strut and rear torsion beam suspension
Tachometer
Door ajar warning lamps
Seat belt reminders (driver & front passenger)
Information display (outside temperature, fuel consumption & range)
Light-off / key reminder
Low fuel warning indicator
Centre cabin light with fade-out (3 position)
Height-adjustable driver's seat
Passenger seatback pocket
Cargo area light
Front map lights
Floor mats (front & rear)
Sun visors with vanity mirrors
Cup holders (2 front / 1 rear)
Bottle holders (2 front / 2 rear)
Day / night rear view mirror
Reclining front seats
Split-folding rear seatbacks (60/40)
Front/rear head restraints (2/3)
Front & rear door armrests
Assist grips (2 front / 2 rear)

Front door pockets
Accessory power outlet
Cargo area cover
Driver's footrest
Halogen headlights
Electric rear hatch release
Power mirrors
Variable intermittent wipers
Rear window wiper/washer with fixed intermittent
Rear window defroster
Remote fuel door release
Body-coloured bumpers
Body-coloured mirrors & door handles
Tinted glass
Wheel covers (Base only)
Engine block heater
Dual front airbags
Front seat-mounted side airbags
Side-curtain airbags
ABS with Brake Assist and EBD (Electronic Brake-Force Distribution)
Front ventilated disc brakes
Rear drum brakes
Engine immobilizer
3-point ELR seat belts (all 5 seating positions)
Pre-tensioners for front seat belts
Centre high-mounted rear stop lamp
Childseat tether anchorage (3 rear)
ISO-FIX child safety seat provisions (2 rear)
Front seat belt shoulder height adjusters
Daytime running lights
Child-proof rear door locks
Side impact beams

MSRP*

Base 6MT	\$17,695
Base CVT	\$18,795
JX CVT	\$20,295
JX ESP CVT	\$20,845
JX AWD 6MT	\$21,595
JX AWD CVT	\$22,695
JX AWD ESP 6MT	\$22,145
JX AWD ESP CVT	\$23,245
JLX AWD CVT	\$24,695
Aero FWD CVT	\$22,195

JX adds

Leather-wrapped steering wheel with illuminated audio controls
Cruise control
Wheel arch extensions (JX & JLX only)
Side skirts
Heated power mirrors
Black roof rails (JX only)
16 inch aluminum alloy wheels
iAWD (optional on JX only)
Rear disc brakes
ESP** (Electronic Stability Program) (optional)

Aero adds

SmartPass™ keyless entry and start system
Automatic climate control
AM/FM/CD/MP3/WMA player (9 speakers plus subwoofer)
Sun visors with vanity mirrors (w/ extenders)
Paddle shifters
Rear spoiler (Aero only)
Fog lamps
17 inch aluminum alloy wheels
ESP** (Electronic Stability Program)

JLX adds

Heated front seats
Wheel arch extensions
Black & silver roof rails
Standard iAWD
16 inch aluminum alloy wheels

**ESP is a registered trademark of Daimler AG

Δ Based on Fuel Consumption Guide ratings published by Natural Resources Canada.

2010 SX4 Hatchback



Active Ingredient: You

Each day holds new possibilities, how you enjoy them is up to you. You are resourceful, environmentally conscious, connected with nature, and you are always up for exploring the world around you. The SX4 Hatchback was made for this part of you.

SX4 Hatchback - Sporty, energetic, and versatile - for a wide range of road types and conditions.†

2010 SX4 HATCHBACK AT A GLANCE

- Most fuel efficient AWD in Canada[†]
- Fun to drive European tuned sport suspension
- Surprisingly loaded with standard features
- Unique design combines sporty performance with SUV versatility

†AWD model available.

2010 Specifications

SPECIFICATIONS - Base

Engine	2.0 Litre, 16 valve, 4 cyl.
Horsepower	150 hp @ 6,200 rpm
Torque	140 lb-ft @ 4,000 rpm
Transmission	6-speed manual CVT w/Manumatic Control
Fuel Tank Capacity	50 litres
Fuel Economy L/100 KM (MPG)	
6MT City/Highway	9.0/6.0 (31/47)
CTV City/Highway	8.0/6.1 (35/46)

FEATURES

Power, rack and pinion steering	Front & rear door armrests
Power windows with driver's express down	Assist grips (2 front / 2 rear)
Power door locks	Front & rear door pockets
2-stage remote keyless entry with panic function	Accessory power outlet
Air conditioning	Driver's footrest
AM/FM/CD/MP3/WMA player (4 speakers)	Halogen headlights
Auxiliary audio input jack	Power mirrors
Digital clock	Variable intermittent wipers
Speed sensing volume control	Rear window defroster with timer
XM satellite radio ready (optional receiver & antenna required)	Remote fuel door release
Front MacPherson Strut and rear torsion beam suspension	Remote trunk release
Tachometer	Body-coloured bumpers
Door ajar warning lamps	Body-coloured mirrors & door handles
Seat belt reminders (driver & front passenger)	Tinted glass
Information display (outside temperature, fuel consumption & range)	Wheel covers (Base only)
Light-off / key reminder	Engine block heater
Low fuel warning indicator	Dual front airbags
Steering lock	Front seat-mounted side airbags
Tilt steering wheel	Side-curtain airbags
Centre cabin light with fade-out (3 position)	ABS with Brake Assist and EBD (Electronic Brake-Force Distribution)
Height-adjustable driver's seat	Front ventilated disc brakes
Driver and front passenger seat-mounted armrests	Rear drum brakes
Passenger seatback pocket	Engine immobilizer
Split-folding rear seatback (60/40)	3-point ELR seat belts (all 5 seating positions)
Trunk light	Pre-tensioners for front seat belts
Front map lights	Centre high-mounted rear stop lamp
Floor mats (front & rear)	Childseat tether anchorage (3 rear)
Sun visors with vanity mirrors	ISO-FIX child safety seat provisions (2 rear)
Cup holders (2 front / 1 rear)	Front seat belt shoulder height adjusters
Bottle holders (2 front / 2 rear)	Daytime running lights
Day / night rear view mirror	Child-proof rear door locks
Reclining front seats	Side impact beams
Front / rear head restraints (2/3)	

MSRP*

Base 6MT	\$17,695
Base CVT	\$18,795
Sport 6MT	\$19,695
Sport CVT	\$20,795
Sport ESP 6MT	\$20,245
Sport ESP CVT	\$21,345

Sport model adds

SmartPass™ keyless entry and start system
Automatic climate control
AM/FM/CD/MP3/WMA player (9 speakers plus subwoofer)
Illuminated steering wheel mounted audio controls
Cruise control
Leather-wrapped steering wheel
Heated front seats
Sun visors with vanity mirrors (w/extendors)
Paddle shifters
Aero body kit - body-coloured front & rear valances, side sill extensions
Rear spoiler
Heated power mirrors
Electric trunk release
Fog lamps
Aluminum alloy wheels
ESP** (Electronic Stability Program) (optional)
Rear disc brakes

** ESP is a registered trademark of Daimler AG

2010 SX4 Sedan



The Journey of a Lifetime

Once the goal is in sight, there are those who rush to the first opportunity, and those who take the time to select the right path. Never one to waste time showing off, you still know the importance of setting yourself apart. This makes the SX4 Sedan the perfect complement to the way you choose to live your life. As smart as it is stylish, the SX4 Sedan understands that enjoying the ride is as important as the final destination. SX4 Sedan - Japanese quality, European drive and handling, North American spaciousness.

2010 SX4 SEDAN AT A GLANCE

- Largest trunk space in its class[†]
- Fun to drive European tuned sport suspension
- Surprisingly loaded with standard features
- Excellent fuel efficiency

[†] Based on competitive information at time of print.

2010 Specifications

SPECIFICATIONS

Engine	1.6 Litre, 16 valve, 4 cyl.
Horsepower	106 hp @ 6,400 rpm
Torque	105 lb-ft @ 3,800 rpm
Transmission	5-speed manual 4-speed automatic
Fuel Tank Capacity	45 litres
Fuel Economy L/100 KM (MPG)	
Manual City/Highway	7.9/5.7 (36/50)
Automatic City/Highway	8.2/5.8 (34/49)

FEATURES

Power, rack and pinion steering	Accessory power outlet
Air conditioning (optional)	Front ashtray
AM/FM/CD/MP3 player (4 speakers)	Driver's footrest
Auxiliary audio input jack	Halogen headlights
Front MacPherson strut and rear torsion beam suspension	Adjustable outside mirrors (manual)
Tachometer	Variable intermittent wipers
Digital clock	Rear window wiper & washer
Light-off / key reminder	Rear window defroster
Low fuel warning indicator	Remote fuel door release
Steering lock	Body-coloured bumpers
Tilt steering	Wheel covers
Front cabin light (3 position)	Engine block heater
Cargo area light	Engine immobilizer
Front centre floor console	Daytime running lights
Floor mats (front & rear)	Dual front airbags
Sun visors with vanity mirrors	Front seat-mounted side airbags
Sunglass holder	Front ventilated disc brakes
Cup holders (2 front / 1 rear)	Rear drum brakes
Day / night rear view mirror	Centre high-mounted rear stop lamp
Reclining front seats	3-point ELR seat belts (all 5 seating positions)
Height-adjustable driver's seat	Pre-tensioners for front seat belts
Split-folding rear seatback (60/40)	Rear childseat tether & anchors
Front/rear head restraints (2/2)	Child-proof rear door locks
Front & rear door armrests	Side impact beams
Assist grips (front passenger & rear)	
Front door pockets	
Front seatback pockets (driver & passenger side)	

MSRP*

MT	TBA
MT AC	TBA
AT AC	TBA

2010 Swift+



Good thing. Small package.

Don't let the compact size fool you, because the 2010 Suzuki Swift+ is ready to impress. Start with the efficient 1.6 litre 4 cylinder engine – a spirited performer offering unbelievable fuel economy – that compliments today's active and social lifestyle. The hatchback design makes for a deceptively spacious cargo area, with 60/40 split-folding rear seats adding to its versatility. Add in the contemporary exterior and interior styling and the result is a vehicle that will never cease to amaze drivers, passengers and onlookers alike.

2010 SWIFT+ AT A GLANCE

- Fuel efficient 1.6 litre engine
- Versatile Hatchback design provides a spacious interior

2010 Specifications

SPECIFICATIONS

Engine	4.0 Litre, 24 valve, V6
Horsepower	261 hp @ 5,600 rpm
Torque	281 lb-ft @ 4,000 rpm
Transmission	5-speed automatic
Fuel Tank Capacity	80 litres
Fuel Economy L/100 KM (MPG)	
Automatic City/Highway	14.6/10.6 (19/27)

MSRP*

JX \$34,995

FEATURES

Power rack and pinion steering	Heated outside power mirrors
Power windows with driver's side auto down	Variable intermittent wipers
Power door locks	Body-coloured front bumper
2-stage remote keyless entry with panic function	Privacy glass
Air conditioning	Chrome rear bumper
AM/FM/CD player with 6 speakers	17 inch aluminum alloy wheels
Cruise control	Splash guards
Front independent double wishbone and rear multi-leaf suspension with solid axle	Bed liner (Spray-on type)
Tachometer	Utili-track C-Channel System
Digital clock	Rear window defroster with timer
Light-off / key reminder	4WD with two-speed transfer case (high & low range)
Low fuel warning indicator	Active front seat head restraints
Steering lock	4 wheel limited slip with traction control
Tilt steering wheel	Vehicle Dynamic Control (VDC)
Centre cabin light with fade-out (3 position)	Hill start assist (HSA)
Driver's footrest	Hill descent control (HDC)
Front map lights	Dual front airbags
Floor mats (front & rear)	Front seat-mounted side airbags
Sun visors with extensions	Side-curtain airbags
Sunglass holder	ABS with EBD (Electronic Brake-Force Distribution)
Vanity mirrors	Front and rear ventilated disc brakes
Cup holders (2 in front console / 2 in rear console)	Tire pressure monitoring system
Day / night rear view mirror	Engine immobilizer
Fabric seat material	3-point ELR seat belts for all seating positions
Split-folding rear seatbacks (60/40)	Pre-tensioners for front seat belts
Head restraints (2 front / 2 rear)	Centre high-mounted rear stop lamp
Front seat centre armrest with storage compartment	Height-adjustable outboard front seat belt anchorage
Front & rear door armrests	Child-proof rear door locks
3 assist grips	Daytime running lights
Front & rear door bottle holders	Side impact beams
Front & rear door pockets	
Rear under seat storage with net	
Accessory power outlets (2)	
Halogen headlights	

2010 Equator



Works hard. Plays harder.

Get the best of both worlds with the 2010 Suzuki Equator - a dependable off-road performer that is designed to fit in with your active lifestyle. With the class leading power of its 4.0 litre V6 at your disposal, you'll be able to get your toys even closer to where you love to play. Plus it's built to withstand the punishment it'll surely endure while it helps you push your own personal limits. All this from a pickup that is as accommodating as it is tough, making it the obvious choice for today's adventure seeker.

2010 EQUATOR AT A GLANCE

- Class leading power
- Standard 4 wheel drive
- Durable spray-on bed liner
- 2767 kg (6100 lb) towing capacity

Kizashi Grand Vitara SX4 Hatchback SX4 Sedan Swift+ Equator

20
10

Visit your local
Suzuki dealer today

suzuki.ca

SUZUKI SECURE ADVANTAGE PROTECTION: We are proud to deliver each 2010 Suzuki with Suzuki Secure Advantage Protection warranty coverage at no additional cost. The Suzuki Secure Advantage Protection plan features a 5-year/100,000 kilometre Powertrain Warranty, a 3-year/60,000 kilometre New Vehicle Limited Warranty and a 5-year unlimited mileage Anti-Perforation warranty. All warranties are zero deductible and fully transferable at no cost. **ROADSIDE ASSISTANCE:** For added peace of mind, SUZUKI SECURE ADVANTAGE PROTECTION includes numerous roadside assistance benefits. Wherever you may be in Canada or the continental United States, should you require roadside service for towing due to collision or mechanical problems, battery boost, if you have run out of fuel, or locked your keys in your car, have a flat tire or require winching or extrication to get you back on the road, Suzuki Secure Advantage Roadside Assistance has you covered. At no additional cost to you. Just call our toll-free number and a bilingual Suzuki Secure Advantage Roadside Assistance counsellor will help you on your way, 24 hours/day, 365 days/year. This plan also features Trip Interruption benefits so if you are more than 100 kilometres from home and your vehicle is undrivable for any reason, you can make alternate arrangements and request reimbursement for expenses incurred within 3 days and up to \$300. Suzuki Secure Advantage Roadside Assistance covers your 2010 Suzuki for 3 years with no mileage limitations. **SUZUKI PROTECTION PLAN:** Should you plan to drive your new Suzuki farther or longer than the coverage provided by the Suzuki New Vehicle Limited Warranty, the Suzuki Protection Plan will be of special interest to you. Suzuki Protection Plan provides you with the ability to enhance and extend coverage already provided by the new vehicle limited warranty. Suzuki Protection Plan offers you affordable, cost-effective peace of mind in the event of unexpected mechanical failure or other roadside emergencies for up to 7 years or 140,000 kilometres. Suzuki Protection Plan offers a vast choice of coverage levels, terms and deductibles allowing you to select the specific plan best suited to your ownership requirements. Ask your Suzuki dealer for a complete explanation of the benefits, coverages, limitations and exclusions of Suzuki Protection Plan, to better assist you in choosing the coverage that best suits your needs. The Suzuki Logo, Suzuki, Kizashi, Grand Vitara, SX4 Hatchback, SX4 Sedan, Swift+ and Equator are registered trademarks of Suzuki Motor Corporation of Japan. **DRIVE RESPONSIBLY. BUCKLE UP FOR SAFETY—DON'T DRINK AND DRIVE.** Specifications and equipment based on information available at time of printing and subject to change without notice, and may differ in each sales area. Some vehicles shown with optional equipment. Colours shown may vary from actual colours. For more details on 2010 options, accessories and specifications, contact your local Suzuki dealer. To avoid injury from an inflating airbag always place children twelve years old and under in the rear seat. Always move both driver and passenger seats as far back from airbags as practical; never transport a child in a rear-facing seat in the front seat. Always use the seat belts and buckle up properly. Fuel economy estimates are determined by using Transport Canada approved testing methods. ©2010 Suzuki Canada Inc. *MSRP are current at time of printing and are subject to change without notice. Dealers may sell for less.



Way of Life