

# Grand Vitara



Way of Life!



20

09





# Accept no compromises.

Follow your road – regardless of where it may lead you – with the 2009 Suzuki Grand Vitara. Whether navigating campground trails, or getting the kids to hockey practice, this authentic SUV is designed to move at the speed of life. Choose between two powerful yet fuel-efficient engines that offer unparalleled flexibility. Add to this a versatile cargo area, refined spacious interior, enhancements in Noise/Vibration/Harshness (NVH) and class-leading safety and security. The result is an overachieving 4WD that can handle anything your unique lifestyle demands.

## 2009 GRAND VITARA AT A GLANCE

- New 4 cylinder engine
- An authentic SUV designed to impress
- Highest towing capacity in its class
- Enhancements in NVH (Noise/Vibration/Harshness) offers a smooth quiet ride.





## Powerful and efficient.

Under the hood of every Grand Vitara is an innovative engine that gives you the ability to explore the world around you. Brilliantly engineered, it offers the best of both worlds by delivering an abundance of power while achieving impressive fuel economy.





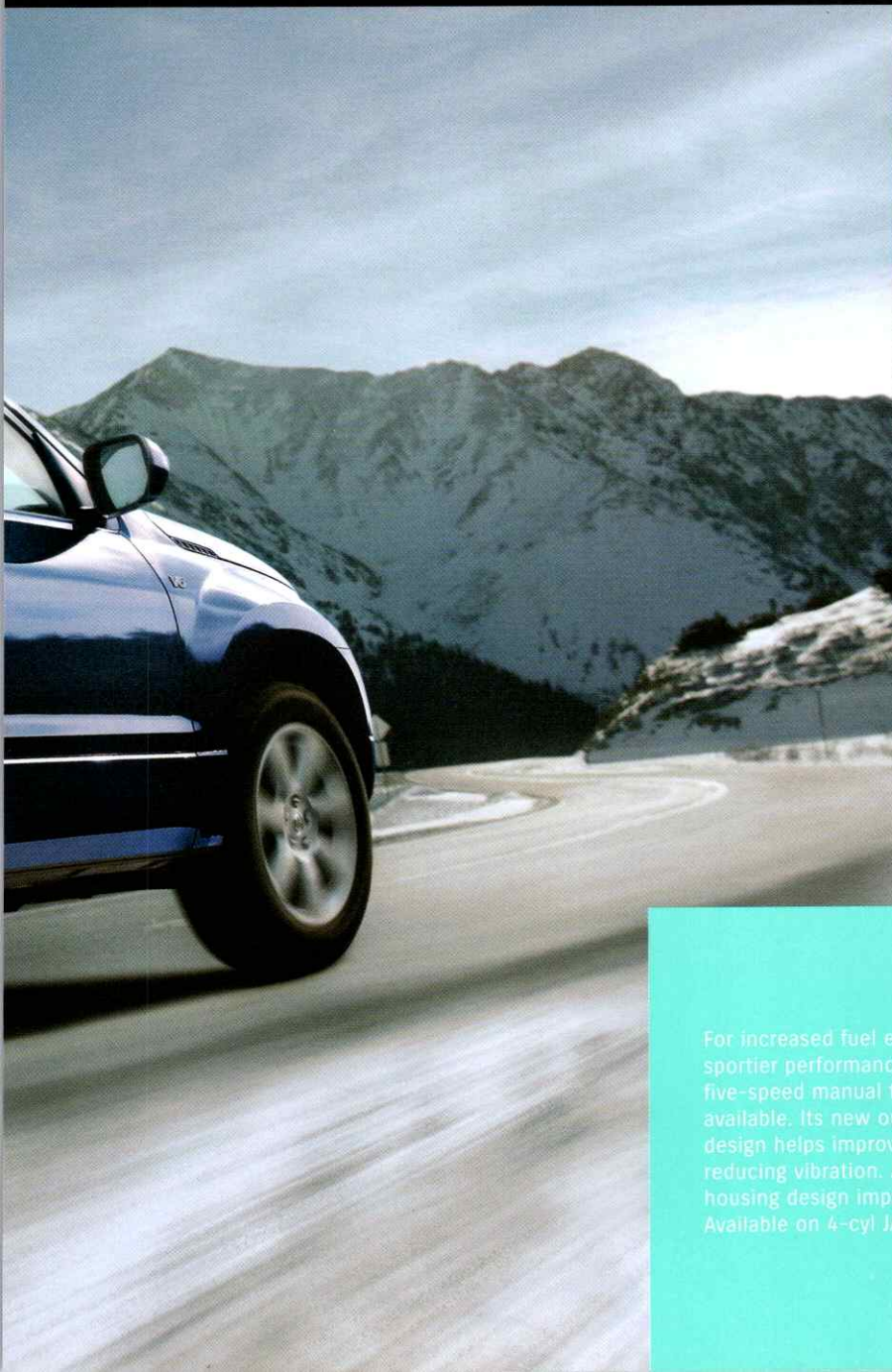
SUZUKI



New for 2009 is a 2.4 litre 4 cylinder engine that generates 162 lb.-ft. of torque, making it the best in its class for towing capacity. Couple this with exceptional fuel economy, and the result is nothing short of extraordinary.

A newly engineered 3.2 litre V6 is at your beck and call. Employing advanced Variable Valve Timing (VVT) technology, it's a responsive engine that effectively increases power and torque while maximizing fuel efficiency.

SUZUKI  
V6  
3.2



For increased fuel economy and sportier performance, an optional five-speed manual transmission is available. Its new output-reduction design helps improve durability, while reducing vibration. A new shifter housing design improves shift feeling. Available on 4-cyl JA model.







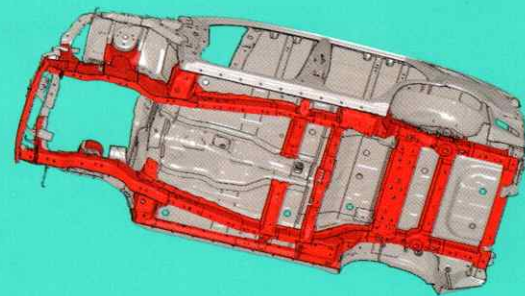
## Built to perform.

A true SUV, the Grand Vitara never experiences performance anxiety. This is due to the fact it was designed with you – the driver – in mind. Because let's face it, sometimes life has you taking the road less travelled.





Powering all four wheels at all times, the Grand Vitara's available 4-mode 4X4 system ensures positive traction in any driving situation. An in-dash control facilitates quick and easy mode changing: **4H** for most driving conditions, **4H Lock** for more difficult off-roading, **4L Lock** for extreme surface conditions, and **N** (neutral) that frees the transmission, allowing the Grand Vitara to be towed by a motor home safely and effortlessly.

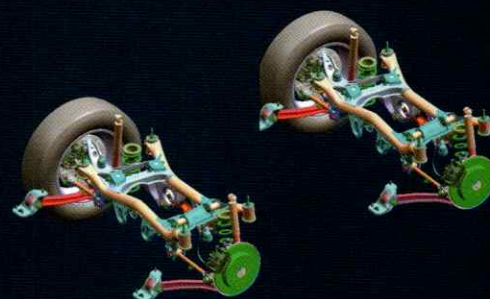
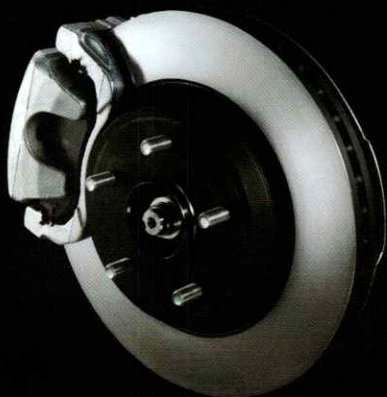


Built atop an Integrated Ladder Frame, the Grand Vitara achieves increased rigidity and durability while minimizing overall vehicle weight. The monocoque design also reduces annoying body squeaks and rattles. Additionally, this framing allows for increased ground clearance and reduced floor height, resulting in outstanding off-road capabilities. It also results in delivering class leading towing capacity of 3000 pounds.

An enhancement over the previous year, Noise/Vibration/Harshness (NVH) engineers have successfully lowered interior noise levels. This works in creating a more pleasant environment for drivers and passengers alike.



Ample stopping power is made possible with front and rear ventilated disc brakes. Standard anti-lock brakes (ABS) with electronic brake-force distribution (EBD) and brake assist function provide yet another level of safety.



Agility and sporty handling is delivered through the independent suspension featuring front MacPherson struts and rear multi-link geometry. Both work in tandem to increase on-road responsiveness and off-road handling.



# Control at your fingertips.

Arriving at your destination is only a small part of the overall drive – experiencing an enjoyable journey is just as important. And in the Grand Vitara, it's an arm's reach away.



Highway driving is made easier with available cruise control functions placed on the spoke of the steering wheel, right where you need them.

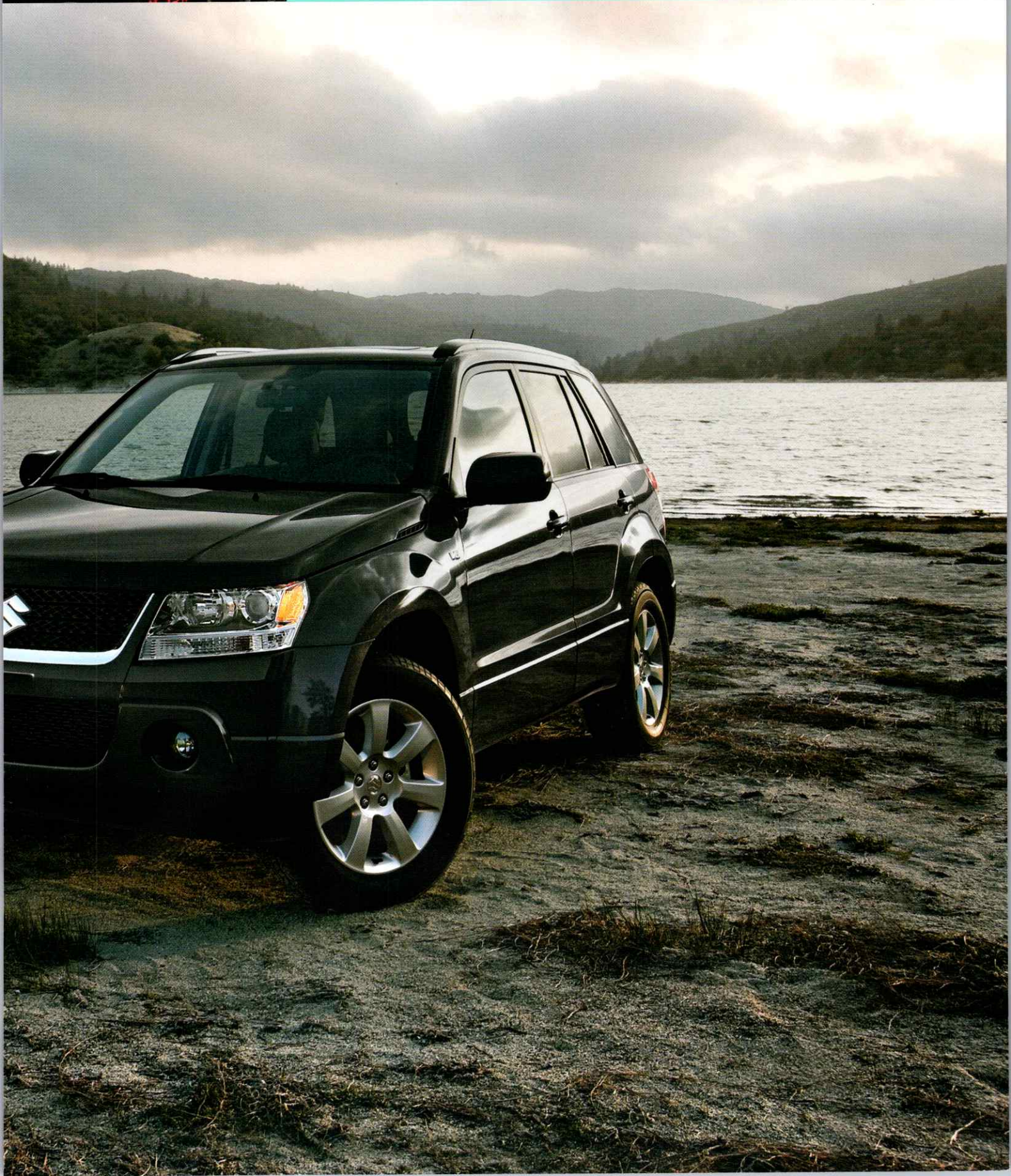
Fully automatic climate control maintains the ideal cabin ambience for increased driving comfort.







A premium in-dash sound system can be controlled via the illuminated audio controls integrated into the steering wheel. Up to eight speakers create a full range of sound that's levelled by a speed sensing volume control. What's more, the CD player accepts MP3 and WMA audio files and is XM Satellite Radio ready.





# An accommodating host.

Sit back and enjoy all the comforts of home, even when you're nowhere near it. With a refined interior that provides driver and passengers alike with a number of functional and convenient amenities, it's actually hard not to.



The centre console provides convenient storage for maps and other essentials. It also features a sliding armrest for increased comfort.







Available HomeLink<sup>®</sup> can be programmed to control a variety of electronic devices including garage doors, community gates and even home lighting.

Go keyless, with our available SmartPass<sup>™</sup> system. Lock and unlock your Grand Vitara, even start and stop the engine without turning a single key.

An available sunroof enhances cabin spaciousness, while allowing all occupants to better experience and appreciate their surrounding environment.

60/40 split rear seats can be separately reclined for individual passenger comfort, or tumbled forward, creating more space for anything from sleeping bags to groceries.





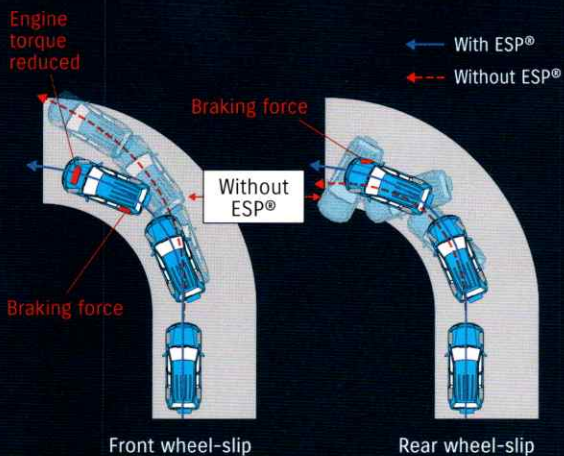


## Safety and security.

Experience the freedom of true peace of mind – the kind that comes with protection no matter what the road has in store.







Standard on all models is the Electronic Stability Program®\* (ESP®). This advanced technology helps manage three important functions: ABS with EBD, traction control and stability control. Using various sensors, the ESP® is able to determine and hold the intended cornering line and optimize both traction and stability by reducing front and rear wheel-slip.



SRS dual front, seat-mounted and side curtain airbags contribute to overall class-leading safety and protection.

Note: The SRS airbags are shown inflated for descriptive purposes.



The available Hill Descent Control feature allows for smooth and controlled descents by automatically applying the appropriate braking force necessary.



Head-impact protection is built into all pillars and upper cabin surfaces to help minimize head injuries in the event of an accident.



3-point ELR seat belts are designed to keep rear seat occupants safe.





# 2009 Grand Vitara

	4 CYLINDER				V6	
COMFORT	JA	JX	JLX	JLX-L	JLX	JLX-L
Power steering	S	S	S	S	S	S
Power windows with driver's express down	S	S	S	S	S	S
Power door locks	S	S	S	S	S	S
2-stage remote keyless entry with panic function	S	S	S	S	S	S
SmartPass™ keyless entry and start system	N/A	S	S	S	S	S
Air conditioning	S	S	S	S	S	S
Automatic climate control	S	S	S	S	S	S
Micron air filter	S	S	S	S	S	S
Sound System						
AM/FM/CD/MP3/WMA player (4 speakers)	S	N/A	N/A	N/A	N/A	N/A
AM/FM/CD/MP3/WMA player (6 speakers w/subwoofer)	N/A	S	N/A	N/A	N/A	N/A
AM/FM/6 CD/MP3/WMA changer (7 speakers w/subwoofer)	N/A	N/A	S	S	S	S
Illuminated steering wheel mounted audio controls	S	S	S	S	S	S
Speed sensing volume control	S	S	S	S	S	S
XM satellite radio ready (optional receiver & antenna required)	S	S	S	S	S	S
Cruise control	N/A	S	S	S	S	S
Power glass sunroof with tilt and slide feature	N/A	N/A	S	S	S	S
INSTRUMENT PANEL						
Tachometer	S	S	S	S	S	S
Door ajar warning lamps	S	S	S	S	S	S
Seat belt reminders (driver & front passenger)	S	S	S	S	S	S
Information display (clock, outside temperature, fuel consumption & range)	S	S	S	S	S	S
Light-off / key reminder	S	S	S	S	S	S
Low fuel warning indicator	S	S	S	S	S	S
Steering lock	S	S	S	S	S	S
Leather-wrapped steering wheel	N/A	S	S	S	S	S
Tilt steering wheel	S	S	S	S	S	S
INTERIOR						
Centre cabin light with fade-out (3 position)	S	S	S	S	S	S
Rear cabin light (3 position)	S	S	S	S	S	S
Front map lights	S	S	S	S	S	S
Rear cargo light (2 position)	S	S	S	S	S	S
Front door courtesy lights	N/A	N/A	S	S	S	S
Floor mats (front & rear)	S	S	S	S	S	S
Seat material						
Fabric	S	S	S	N/A	S	N/A
Leather	N/A	N/A	N/A	S	N/A	S
Heated front seats	N/A	N/A	S	S	S	S
HomeLink** System	N/A	N/A	S	S	S	S
Sun visors with extensions and vanity mirrors	S	S	S	S	S	S
Cup holders (2 front / 2 rear)	S	S	S	S	S	S
Bottle holders (2 in front doors)	S	S	S	S	S	S
Day / night rear view mirror	S	S	S	S	S	S
Reclining seats (front & rear)	S	S	S	S	S	S
Height-adjustable driver's seat	S	S	S	S	S	S
Split-folding rear seatbacks (60/40)	S	S	S	S	S	S
Front/rear head restraints (2/3)	S	S	S	S	S	S
Sliding front seat centre armrest with storage compartment	S	S	S	S	S	S
Front & rear door armrests	S	S	S	S	S	S
4 assist grips (2 front / 2 rear)	S	S	S	S	S	S
Front & rear door pockets	S	S	S	S	S	S
Front seatback pockets	S	S	S	S	S	S
Storage pockets (cargo area & tailgate)	S	S	S	S	S	S
Overhead console	S	S	N/A	N/A	N/A	N/A
Accessory power outlets (console x 2, cargo area x 1)	S	S	S	S	S	S
Cargo area cover	S	S	S	S	S	S
Cargo area convenience hooks (4)	S	S	S	S	S	S
Coat hooks (2)	S	S	S	S	S	S
Driver's footrest	S	S	S	S	S	S
EXTERIOR						
Halogen headlights (multi-reflector and projector)	S	S	S	S	S	S
Automatic headlights (on/off)	S	S	S	S	S	S
Privacy glass	N/A	S	S	S	S	S
Power mirrors	S	S (Heated)	S (Heated)	S (Heated)	S (Heated)	S (Heated)
Variable intermittent wipers	S	S	S	S	S	S
Rear window wiper/washer with fixed intermittent	S	S	S	S	S	S
Rear window defroster with timer	S	S	S	S	S	S
Remote fuel door release	S	S	S	S	S	S
Body-coloured bumpers/mirrors/door handles	S	S	S	S	S	S
Fog lamps	N/A	N/A	S	S	S	S
Roof rails	N/A	S	S	S	S	S
Hard spare tire case						
Half case	S	N/A	N/A	N/A	N/A	N/A
Full case with "Suzuki" logo	N/A	S	S	S	S	S
Aluminum alloy wheels	N/A	S (17 inch)	S (17 inch)	S (17 inch)	S (18 inch)	S (18 inch)

**SUZUKI SECURE ADVANTAGE PROTECTION:** We are proud to deliver each 2009 Suzuki with Suzuki Secure Advantage Protection warranty coverage at no additional cost. The Suzuki Secure Advantage Protection plan features a 5-year/100,000 kilometre Powertrain Warranty, a 3-year/60,000 kilometre New Vehicle Limited Warranty and a 5-year unlimited mileage Anti-Perforation warranty. All warranties are zero deductible and fully transferable at no cost. **ROADSIDE ASSISTANCE:** For added peace of mind, SUZUKI SECURE ADVANTAGE PROTECTION includes numerous roadside assistance benefits. Wherever you may be in Canada or the continental United States, should you require roadside service for towing due to collision or mechanical problems, battery boost, if you have run out of fuel, or locked your keys in your car, have a flat tire or require winching or extrication to get you back on the road, Suzuki Secure Advantage Roadside Assistance has you covered. At no additional cost to you. Just call our toll-free number and a bilingual Suzuki Secure Advantage Roadside Assistance counsellor will help you on your way, 24 hours/day, 365 days/year. This plan also features Trip Interruption benefits so if you are more than 100 kilometres from home and your vehicle is undrivable for any reason, you can make alternate arrangements and request reimbursement for expenses incurred within 3 days and up to \$300. Suzuki Secure Advantage Roadside Assistance covers your 2009 Suzuki for 5 years with no mileage limitations. **SUZUKI PROTECTION PLAN:** Should you plan to drive your new Suzuki farther or longer than the coverage provided by the Suzuki New Vehicle Limited Warranty, the Suzuki Protection Plan will be of special interest to you. Suzuki Protection Plan provides you with the ability to enhance and extend coverage already provided by the new vehicle limited warranty. Suzuki Protection Plan offers you affordable, cost-effective peace of mind in the event of unexpected mechanical failure or other roadside emergencies for up to 7 years or 140,000 kilometres. Suzuki Protection Plan offers a vast choice of coverage levels, terms and deductibles allowing you to select the specific plan best suited to your ownership requirements. Ask your Suzuki dealer for a complete explanation of the benefits, coverages, limitations and exclusions of Suzuki Protection Plan, to better assist you in choosing the coverage that best suits your needs.



# Features & Specifications

	4 CYLINDER				V6	
	JA	JX	JLX	JLX LEATHER	JLX	JLX LEATHER
SAFETY AND SECURITY						
Engine block heater	S	S	S	S	S	S
Full-Time 4WD	S	N/A	N/A	N/A	N/A	N/A
4 Mode 4WD (4H, 4L LOCK, 4L LOCK, Neutral)	N/A	S	S	S	S	S
Centre Differential LSD (Limited Slip Differential)	S	N/A	N/A	N/A	N/A	N/A
Dual front airbags	S	S	S	S	S	S
Front seat-mounted side airbags	S	S	S	S	S	S
Side-curtain airbags	S	S	S	S	S	S
ABS with EBD (Electronic Brake-Force Distribution)	S	S	S	S	S	S
Centre high-mounted rear stop lamp	S	S	S	S	S	S
Brake assist	S	S	S	S	S	S
ESP* (Electronic Stability Program) with traction control	S	S	S	S	S	S
Engine immobilizer	S	S	S	S	S	S
3-point ELR seat belts (all 5 seating positions)	S	S	S	S	S	S
Height adjustable front seat belt anchors	S	S	S	S	S	S
ISO-FIX child safety seat provisions (2 rear)	S	S	S	S	S	S
Childseat tether anchorage (3 rear)	S	S	S	S	S	S
Child-proof rear door locks	S	S	S	S	S	S
Daytime running lights	S	S	S	S	S	S
Side impact beams	S	S	S	S	S	S
Hill hold and Hill descent control	N/A	N/A	N/A	N/A	S	S

\*ESP is a registered trademark of Daimler AG

\*\*HomeLink and the HomeLink House are registered trademarks of Johnson Controls

S: Standard N/A: Not Available

## EXTERIOR DIMENSIONS

Overall length	mm (inch)	4,500 (177.1)
Overall width	mm (inch)	1,810 (71.3)
Overall height	mm (inch)	1,695 (66.7)
Wheelbase	mm (inch)	2,640 (103.9)
Tread	Front mm (inch)	1,540 (60.6)
	Rear mm (inch)	1,560 (61.4)
Ground clearance	mm (inch)	200 (7.9)
Minimum turning radius	m (ft)	5.5 (18.0)
Seating capacity	persons	5

## INTERIOR DIMENSIONS

Head Room	Front	mm (inch)	1,016 (40.0)
	Front w/ sunroof	mm (inch)	971 (38.2)
	Rear	mm (inch)	970 (38.2)
Leg Room	Front	mm (inch)	1,050 (41.3)
	Rear	mm (inch)	945 (37.2)
Shoulder Room	Front	mm (inch)	1,413 (56.3)
	Rear	mm (inch)	1,394 (54.9)
Hip Room	Front	mm (inch)	1,409 (55.5)
	Rear	mm (inch)	1,119 (44.0)
Cargo Length	Behind 2nd Seat	mm (inch)	719 (28.3)
	2nd Seat Folded	mm (inch)	1,655 (65.2)
Cargo Height		mm (inch)	1,065 (41.9)
Cargo Width		mm (inch)	1,014 (39.9)
Luggage Capacity		litres (cubic feet)	758 (26.7)
Cargo Volume Index	Behind 2nd Seat	m <sup>3</sup> (ft <sup>3</sup> )	0.69 (24.4)
	w/sunroof	m <sup>3</sup> (ft <sup>3</sup> )	0.68 (23.8)
	2nd Seat Folded	m <sup>3</sup> (ft <sup>3</sup> )	1.97 (68.9)
	w/sunroof	m <sup>3</sup> (ft <sup>3</sup> )	1.93 (67.3)
Interior Volume		litres (ft <sup>3</sup> )	3,550 (125.4)
	w/sunroof	litres (ft <sup>3</sup> )	3,480 (122.9)

## ENGINE

Number of cylinders		4	6
Number of valves		16	24
Piston displacement	cc	2,393	3,195
Bore x stroke	mm (inch)	92 x 90 (3.62 x 3.54)	89 x 85.6 (3.5 x 3.37)
Compression ratio		10 : 1	10 : 1
Maximum output	hp @ rpm	166 @ 6,000	230 @ 6,200
Maximum torque	lb-ft @ rpm	162 @ 4,000	213 @ 3,500
Fuel distribution		Multi Point Injection	Multi Point Injection

## TRANSMISSION

		5MT	4AT	5AT
Gear ratio	1st	4.545	2.826	3.520
	2nd	2.354	1.493	2.043
	3rd	1.693	1.000	1.401
	4th	1.241	0.688	1.000
	5th	1.000	N/A	0.717
	Reverse	4.431	2.703	3.224
Final gear ratio		3.727	5.125	3.583
Transfer gear ratio	High	1.000	1.000	1.000
	Low	1.970	1.970	1.970

## CHASSIS

Steering		Power, Rack & Pinion
Brakes	Front	Ventilated Disc
	Rear	Ventilated Disc
Suspension	Front	Independent MacPherson Strut
	Rear	Independent Multi-link
Tires	JA 4 cyl	P225/70R16
	JX, JLX 4 cyl	P225/65R17
	JLX V6	P225/60R18

## WEIGHTS

		5MT	4AT	5AT
Curb weight (min.) kg (lbs)	JA	1,633 (3,599)	-	-
	JX	-	1,656 (3,649)	-
	JLX	-	1,672 (3,684)	1,792 (3,950)
	JLX-L	-	1,676 (3,693)	1,796 (3,959)
Gross vehicle weight kg (lbs)	JA	2,110 (4,655)	-	-
	JX	-	2,118 (4,669)	-
	JLX	-	2,134 (4,704)	2,204 (4,858)
	JLX-L	-	2,138 (4,713)	2,208 (4,867)

## FUEL CONSUMPTION

		5MT	4AT	5AT
Fuel tank capacity (litres)		66	66	66
Fuel economy City/Highway L/100 km (mpg)		11.2/8.1 (25/35)	11.2/8.6 (25/33)	12.5/8.6 (23/33)

## TOWING CAPACITY

Towing capacity	kg (lbs)	1,360 (3,000)
-----------------	----------	---------------

## EXTERIOR/INTERIOR COLOURS



Cool Beige  
Metallic



Pearl Black  
Metallic



Graphite Grey  
Metallic

Cloth: Beige  
Leather: Beige

Cloth: Beige  
Leather: Beige

Cloth: Black  
Leather: Black



Pearl Blue  
Metallic



Silky Silver  
Metallic



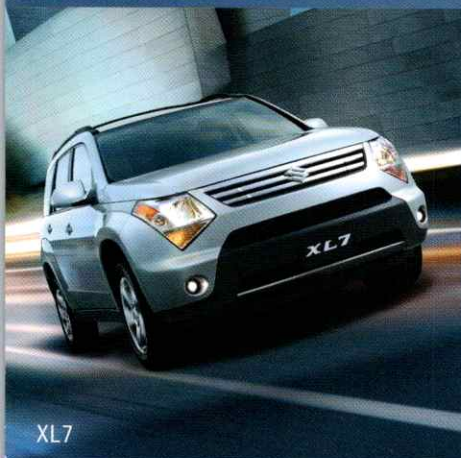
Pearl White  
Metallic

Cloth: Black  
Leather: Black

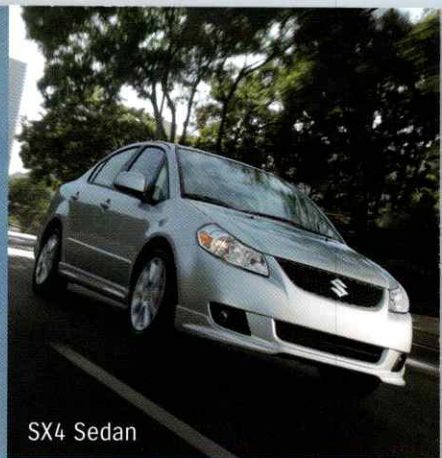
Cloth: Black  
Leather: Black

Cloth: Beige  
Leather: Beige





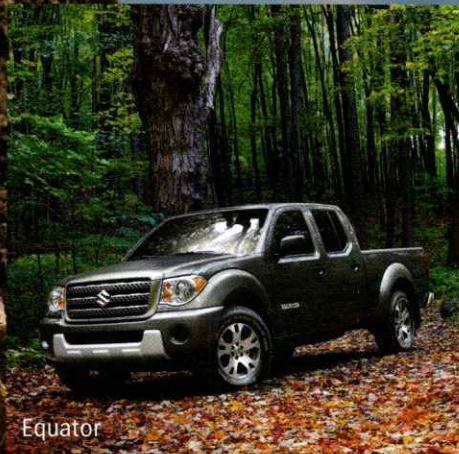
XL7



SX4 Sedan



SX4 Hatchback



Equator



Swift+

**suzuki.ca**

The Suzuki Logo, Suzuki, XL7, Grand Vitara, SX4, Swift, and Equator are registered trademarks of Suzuki Motor Corporation of Japan. DRIVE RESPONSIBLY. BUCKLE UP FOR SAFETY—DON'T DRINK AND DRIVE. Specifications and equipment based on information available at time of printing and subject to change without notice, and may differ in each sales area. Some vehicles shown with optional equipment. Colours shown may vary from actual colours.

For more details on 2009 options, accessories and specifications, contact your local Suzuki dealer.

To avoid injury from an inflating airbag always place children twelve years old and under in the rear seat. Always move both driver and passenger seats as far back from airbags as practical; never transport a child in a rear-facing seat in the front seat. Always use the seat belts and buckle up properly.

Fuel economy estimates are determined by using Transport Canada approved testing methods.

All other trademarks and copyrights are the property of their respective owners.

XM Radio: Required XM® tuner and subscription sold separately. Subscriptions subject to customer agreement available at xmradio.com. The XM name is a registered trademark of XM Satellite Radio, Inc.

©2008 Suzuki Canada Inc.

20  
09



**Way of Life!**