



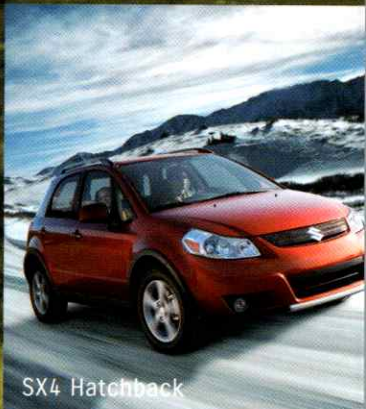
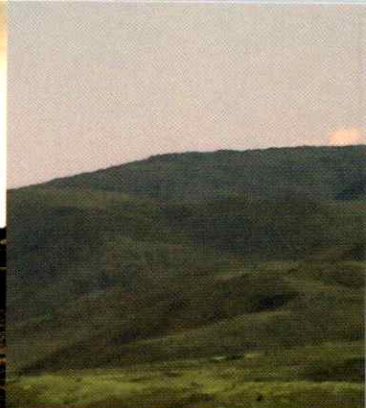
Full Line



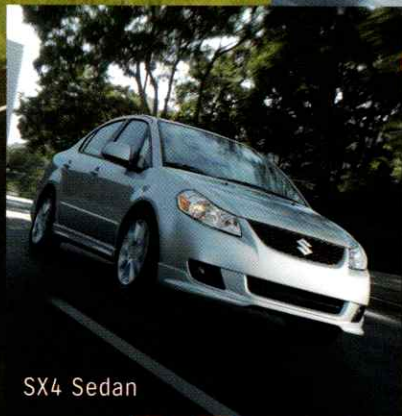
Way of Life!



Grand Vitara



SX4 Hatchback

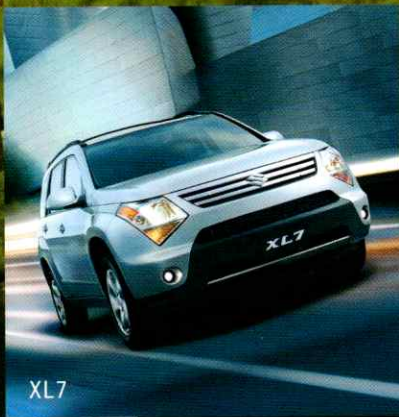
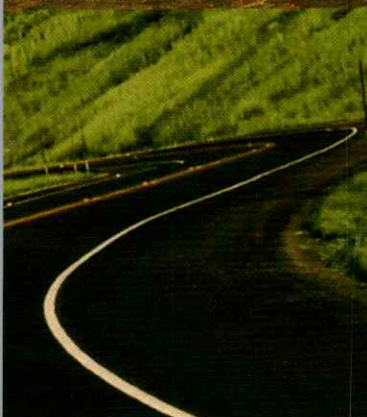


SX4 Sedan

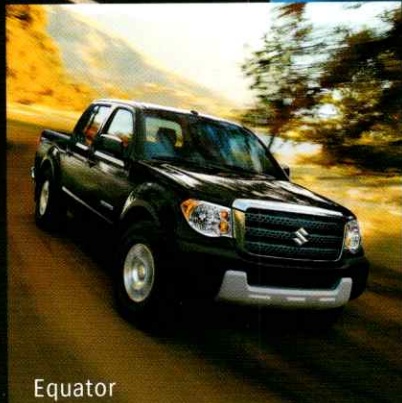
20
09



Swift+



XL7



Equator

2009 Specifications

SPECIFICATIONS - 4 cylinder

Engine	2.4 Litre, 16 valve, 4 cyl.
Horsepower	166 hp @ 6,000 rpm
Torque	162 lb-ft @ 4,000 rpm
Transmission	5-speed manual 4-speed automatic
Fuel Tank Capacity	66 litres
Fuel Economy L/100 KM (MPG)	
Manual City/Highway	11.2/8.1 (25/35)
Automatic City/Highway	11.2/8.6 (25/33)

FEATURES

Full-time 4WD (JA only)
Power steering
Power windows with driver's side express down
Power mirrors
Power door locks
2-stage remote keyless entry with panic function
Air conditioning
Automatic climate control
Micron air filter
AM/FM/CD/MP3/WMA player with 4 speakers and speed sensing volume control
Illuminated steering wheel mounted audio controls
Tachometer
Information display (clock, outside temperature, fuel consumption & range)
Low fuel warning indicator
Steering lock
Tilt steering wheel
Centre cabin light with fade-out (3 position)
Rear cabin light (3 position)
Front map lights
Rear cargo light (2 position)
Floor mats (front & rear)
Sun visors with extensions and vanity mirrors
Cup holders (2 front / 2 rear)
Bottle holders (2 in front doors)
Day / night rear view mirror
Reclining seats (front & rear)
Height adjustable driver's seat
Split-folding rear seatbacks (60/40)
Front/rear head restraints (2/3)
Sliding front seat centre armrest with storage compartment
Front & rear door armrests
4 assist grips (2 front / 2 rear)
Front & rear door pockets

Front seatback pockets
Storage pockets (cargo area & tailgate)
Accessory power outlets (console x2, cargo area x1)
Cargo area cover
Halogen headlights (multi-reflector and projector)
Automatic headlights (on/off)
Variable intermittent wipers
Rear window wiper/washer with fixed intermittent
Rear window defroster with timer
Remote fuel door release
Body-coloured bumpers/mirrors/door handles
Engine block heater
Dual front airbags
Front seat-mounted side airbags
Side-curtain airbags
ABS with EBD (Electronic Brake Distribution)
Centre high mounted rear stop lamp
Brake assist
Side impact beams
ESP[†] (Electronic Stability Program) with traction control
Engine immobilizer
3-point ELR seat belts (all 5 seating positions)
Height adjustable front seat belt anchors
ISO-FIX child safety seat provisions (2 rear)
Childseat tether anchorage (3 rear)
Child-proof rear door locks
Daytime running lights

MSRP*

4 cyl. JA MT	\$25,995
4 cyl. JX AT	\$27,995
4 cyl. JXL AT	\$28,995
4 cyl. JXL-L AT	\$29,995
V6 JXL AT	\$31,695
V6 JXL-L AT	\$32,695

JX 4 cylinder adds

4 mode 4WD
4-speed automatic transmission
SmartPass™ Keyless Entry and Start System
Cruise control
Heated power mirrors
Leather-wrapped steering wheel
17 inch alloy wheels
Rear privacy glass
AM/FM/CD/MP3/WMA player with 7 speakers

JXL 4 cylinder adds

Power sunroof
AM/FM/6 CD/MP3/WMA changer with 8 speakers
Heated front seats
HomeLink system**
Fog lights
Leather seating surfaces (available)

JXL V6 adds

3.2 litre V6 engine
5 speed automatic transmission
Hill hold and Hill descent control
18 inch alloy wheels
Leather seating surfaces (available)

†ESP is a registered trademark of Daimler AG

**HomeLink and the HomeLink House are registered trademarks of Johnson Controls

2009 Grand Vitara



Accept no compromises.

Follow your road – regardless of where it may lead you – with the 2009 Suzuki Grand Vitara. Whether navigating campground trails, or getting the kids to hockey practice, this authentic SUV is designed to move at the speed of life. Choose between two powerful yet fuel-efficient engines that offer unparalleled flexibility. Add to this a versatile cargo area, refined, spacious interior, enhancements in Noise/Vibration/Harshness (NVH) and class-leading safety and security. The result is an overachieving 4WD that can handle anything your unique lifestyle demands.

2009 GRAND VITARA AT A GLANCE

- New 4 cylinder engine
- An authentic SUV designed to impress
- Highest towing capacity in its class
- Enhancements in NVH (Noise/Vibration/Harshness) offers a smooth quiet ride

2009 Specifications

SPECIFICATIONS - Base

Engine	2.0 Litre, 16 valve, 4 cyl.
Horsepower	143 hp @ 5,800 rpm
Torque	136 lb-ft @ 3,500 rpm
Transmission	5-speed manual 4-speed automatic
	50 litres
Fuel Tank Capacity	
Fuel Economy L/100 KM (MPG)	
Manual City/Highway	9.2/6.5 (31/43)
Automatic City/Highway	9.0/6.5 (31/43)

FEATURES

Power steering
Power windows with driver's side express down
Power door locks
2-stage remote keyless entry with panic function
Air conditioning
AM/FM/CD/MP3/WMA player (4 speakers)
Speed sensing volume control
XM satellite radio ready (optional receiver & antenna required)
Tachometer
Information display (clock, outside temperature, fuel consumption & range)
Low fuel warning indicator
Tilt steering wheel
Centre cabin light with fade out (3 position)
Driver and front passenger seat mounted armrests
Passenger seatback pocket
Cargo area light
Front map lights
Floor mats (front & rear)
Sun visors with vanity mirrors
Cup holders (2 front / 1 rear)
Bottle holders (2 front / 2 rear)
Day / night rear view mirror
Reclining front seats
Split-folding rear seatback (60/40)
Front/rear head restraints - (2/3)
Front & rear door armrests
Assist grips (2 front / 2 rear)
Front door pockets

Accessory power outlet
Cargo area cover
Halogen headlights
Electric rear hatch release
Power mirrors
Variable intermittent wipers
Rear window wiper/washer with fixed intermittent
Rear window defroster
Remote fuel door release
Body-coloured bumpers
Body-coloured mirrors & door handles
Tinted glass
Engine block heater
Dual front airbags
Front seat-mounted side airbags
Side-curtain airbags
ABS with Brake Assist and EBD (Electronic Brake Distribution)
Engine immobilizer
3-point ELR seat belts (for all 5 seating positions)
Pre-tensioners for front seat belts
Centre high mounted rear stop lamp
Childseat tether anchorage (3 rear)
ISO-FIX child seat safety seat provisions (2 rear)
Front seat belt shoulder height adjusters
Daytime running lights
Child-proof rear door locks
Side impact beams

MSRP*

Base MT	\$17,395
Base AT	\$18,495
JX FWD AT	\$19,995
JX AWD MT	\$21,195
JX AWD AT	\$22,295
JLX AWD MT	\$23,195
JLX AWD AT	\$24,295

JX FWD/AWD adds

16 inch alloy wheels
iAWD (optional)
Black roof rails
Side skirts
Heated power mirrors
Leather-wrapped steering wheel with mounted audio controls
Cruise control

JLX AWD adds

Standard iAWD
ESP[†] (Electronic Stability Program)
AM/FM/6 CD/MP3/WMA changer with 9 speakers
Heated front seats
Automatic climate control
Fog lights
SmartPass™ Keyless entry and start system
Black & silver roof rails

[†]ESP is a registered trademark of Daimler AG

ΔBased on Fuel Consumption Guide ratings published by Natural Resources Canada.

2009 SX4 Hatchback



The best of both worlds.

The Suzuki SX4 Hatchback seamlessly blends the functionality and versatility of a SUV with the economy and sporty performance of a hatchback. This is in part thanks to its available Intelligent All Wheel Drive (iAWD) system – innovative technology that allows drivers to select AWD or FWD with the flip of a switch. The SX4 Hatchback is also the most fuel efficient AWD in Canada.^Δ Then, top everything off with a number of standard features including air conditioning and remote keyless entry that complement today's active lifestyle. The result is a uniquely designed crossover that offers drivers the perfect mix of driving pleasure and practicality.

2009 SX4 HATCHBACK AT A GLANCE

- Most fuel efficient AWD in Canada^Δ
- European tuned sport suspension
- Loaded with standard features
- Unique design combines sporty performance with SUV versatility

2009 Specifications

SPECIFICATIONS - Base

Engine	2.0 Litre, 16 valve, 4 cyl.
Horsepower	143 hp @ 5,800 rpm
Torque	136 lb-ft @ 3,500 rpm
Transmission	5-speed manual 4-speed automatic
Fuel Tank Capacity	50 litres
Fuel Economy L/100 KM (MPG)	
Manual City/Highway	9.2/6.5 (31/43)
Automatic City/Highway	9.0/6.5 (31/43)

FEATURES

Power steering
Power windows with driver's side express down
Power door locks
2-stage remote keyless entry with panic function
Air conditioning
AM/FM/CD/MP3/WMA player (4 speakers)
Speed sensing volume control
XM satellite radio ready (optional receiver & antenna required)
Tachometer
Information display (clock, outside temperature, fuel consumption & range)
Low fuel warning indicator
Tilt steering wheel
Centre cabin light with fade out (3 position)
Driver and front passenger seat mounted armrests
Passenger seatback pocket
Split-folding rear seatback (60/40)
Trunk light
Front map lights
Floor mats (front & rear)
Sun visors with vanity mirrors
Cup holders (2 front / 1 rear)
Bottle holders (2 front / 2 rear)
Day / night rear view mirror
Reclining front seats
Front/rear head restraints (2/3)
Front & rear door armrests
Assist grips (2 front / 2 rear)
Front door pockets

Accessory power outlet
Halogen headlights
Power mirrors
Variable intermittent wipers
Rear window defroster
Remote fuel door release
Remote trunk release
Body-coloured bumpers
Body-coloured mirrors & door handles
Tinted glass
Engine block heater
Dual front airbags
Front seat-mounted side airbags
Side-curtain airbags
ABS with Brake Assist and EBD (Electronic Brake Distribution)
Engine immobilizer
3-point ELR seat belts (for all 5 seating positions)
Pre-tensioners for front seat belts
Centre high mounted rear stop lamp
Childseat tether anchorage (3 rear)
ISO-FIX child seat safety seat provisions (2 rear)
Front seat belt shoulder height adjusters
Daytime running lights
Child-proof rear door locks
Side impact beams

MSRP*

Base MT	\$17,395
Base AT	\$18,495
Sport MT	\$19,345
Sport AT	\$20,445

Sport model adds

AM/FM/6 CD/MP3/WMA changer with 9 speakers
Heated front seats
Automatic climate control
Fog lights
SmartPass™ Keyless entry and start system
17 inch alloy wheels
Heated power mirrors
Leather-wrapped steering wheel with mounted audio controls
Cruise control
Electric trunk release

2009 SX4 Sedan



Success, defined.

The Suzuki SX4 Sedan is ready to prove it has what it takes. This is made clear from the moment you lay eyes on the European styling that gives it a look all its own. Next, have a seat in the well-appointed interior that also boasts the largest trunk space in its class. Combine this with the sheer driving pleasure that only a highly responsive European tuned sport suspension can deliver. And let's not forget, all of these features, plus many more, are made available at a price that won't break the bank. The end result is a vehicle that defines success, and more importantly, allows you to do the same.

2009 SX4 SEDAN AT A GLANCE

- Largest trunk space in its class
- European tuned sport suspension
- Loaded with standard features

2009 Specifications

SPECIFICATIONS

Engine	1.6 Litre, 16 valve, 4 cyl.
Horsepower	106 hp @ 6,400 rpm
Torque	105 lb-ft @ 3,800 rpm
Transmission	5-speed manual 4-speed automatic
Fuel Tank Capacity	45 litres
Fuel Economy L/100 KM (MPG)	
Manual City/Highway	7.9/5.7 (36/50)
Automatic City/Highway	8.2/5.8 (34/49)

MSRP*

MT	\$14,495
MT AC	\$15,695
AT AC	\$16,795

FEATURES

Power steering	(driver & passenger side)
Air conditioning with micron air filter (available)	Accessory power outlet
AM/FM/CD/MP3 player (4 Speakers)	Halogen headlights
Auxiliary input jack	Adjustable outside mirrors
Tachometer	Variable intermittent wipers
Digital clock	Rear window wiper & washer
Low fuel warning indicator	Rear window defroster
Steering lock	Remote fuel door release
Tilt steering	Body-coloured bumpers
Cargo area light	Wheel covers
Front centre floor console	Engine block heater
Floor mats (front & rear)	Engine immobilizer
Sun visors with vanity mirrors	Daytime running lights
Sunglass holder	Dual front airbags
Cup holders (2 front / 1 rear)	Front seat-mounted side airbags
Day / night rear view mirror	Centre high mounted rear stop lamp
Reclining front seats	3-point ELR seat belts (for all 5 seating positions)
Height adjustable driver's seat	Pre-tensioners for front seat belts
Split-folding rear seatback (60/40)	Rear child seat tether & anchors
Front/rear head restraints (2/2)	Child-proof rear door locks
Front & rear door armrests	Side impact beams
Assist grips (front passenger & rear)	
Front door pockets	
Front seatback pockets	

2009 Swift+



Good thing. Small package.

Don't let the compact size fool you, because the 2009 Suzuki Swift+ is ready to impress. Start with the new 1.6 litre 4 cylinder engine – a spirited performer offering unbelievable fuel economy – that compliments today's active and social lifestyle. The hatchback design makes for a deceptively spacious cargo area, with 60/40 split folding rear seats furthering its versatility. Add in the contemporary exterior and interior redesign, and the result is a vehicle that will never cease to amaze drivers, passengers and onlookers alike.

2009 SWIFT+ AT A GLANCE

- Newly designed, fuel-efficient 1.6 litre engine
- Interior and exterior redesign

2009 Specifications

SPECIFICATIONS

Engine	3.6 Litre, 24 valve, V6
Horsepower	252 hp @ 6,400 rpm
Torque	243 lb-ft @ 2,300 rpm
Transmission	6-speed automatic
Fuel Tank Capacity	70 litres
Fuel Economy L/100 KM (MPG)	
Automatic City/Highway	13.5/8.6 (21/33)

MSRP*

JLX AWD	\$36,995
---------	----------

FEATURES

Power steering	Heated front seats (2-stage)	Tire pressure
Power windows	Reclining seats	monitoring system
Power door locks	Fold-flat front passenger seat	ESP (Electronic
2-stage remote keyless	Split-folding seatbacks	Stability Program) [†]
entry with panic function	Head restraints (2/3/2)	Theft deterrent system
Air conditioning	Front seat centre armrest	Engine immobilizer
Automatic climate control	with storage compartment	3-point ELR seat belts
Rear heater/air conditioner	Front & rear door armrests	for all 7 seating positions
Micron air filter	2nd row centre seat armrest	Pre-tensioners for
AM/FM/6 CD/MP3 changer	with 2 cupholders	front seat belts
Pioneer audio system	2 assist grips	Centre high mounted
(7 speakers)	Front & rear door pockets	rear stop lamp
Auxiliary input jack	Front seatback pocket	Height adjustable outboard
Steering wheel mounted	(driver's side)	front seat belt anchorage
audio controls	2nd seat walk-in mechanism	LATCH: child safety
Cruise control	Accessory power outlets	seat provisions
Power glass sunroof with	(console x3,	Child seat anchorage (3 rear)
tilt and slide feature	cargo area x1)	Child-proof rear door locks
Tachometer	Halogen headlights	Daytime running lights
Digital clock	Auto headlights (on/off)	Side impact beams
Information Display (outside	Heated outside power mirrors	
temperature, fuel	Variable intermittent wipers	
consumption, range)	Rear window wiper/washer	
Low fuel warning indicator	with fixed intermittent	
Leather-wrapped	Rear window defroster	
steering wheel	with timer	
Steering lock	Privacy glass	
Tilt steering wheel	Body-coloured mirrors/	
Centre cabin light with	door handles	
fade-out (3 position)	Body-coloured bumpers	
Rear cargo light	Fog lamps	
Front map lights	Roof rails	
Floor mats (front & rear)	Dual chrome exhaust pipes	
Sun visors (extension	Aluminum alloy wheels (17 inch)	
on driver's side only)	Engine block heater	
Vanity mirrors	Dual front airbags	
Cup holders	Side-curtain airbags	
Compass	All Wheel Drive (AWD)	
Day / night rear view mirror	ABS with EBD (Electronic	
6 way power driver's seat	Brake Distribution) &	
Lumbar support (driver's side)	traction control	
Leather seating surfaces		

[†]ESP is a registered trademark of Daimler AG

2009 XL7



Overwhelming perfection.

The 2009 Suzuki XL7 is one family sized SUV that simply refuses to be outdone on any level. This is evident in the efficient yet powerful 252 hp 3.6 litre V6 engine. This strength is not without grace as the XL7 comes equipped with an AWD system. Inside, a well-appointed leather trimmed interior is a real crowd pleaser with seating for up to 7 people. The result? An overachieving SUV with unsurpassed style and comfort that will never cease to impress both drivers and passengers alike.

2009 XL7 AT A GLANCE

- 3.6 litre DOHC V6 Engine that delivers 252 hp
- 6 speed automatic transmission with standard AWD
- Seating for up to 7 people
- Loaded with standard features

2009 Specifications

SPECIFICATIONS

Engine	4.0 Litre, 24 valve, V6
Horsepower	261 hp @ 5,600 rpm
Torque	281 lb-ft @ 4,000 rpm
Transmission	5-speed automatic
Fuel Tank Capacity	80 litres
Fuel Economy L/100 KM (MPG)	
City/Highway	14.4/10.4 (20/27)

MSRP*

JX	\$33,795
----	----------

FEATURES

4WD with two speed transfer (high & low range)	Front & rear door pockets
Dynamic stability (VDC)	Rear under seat storage with net
Traction control (TCS)	Accessory power outlets (2)
Power steering	Halogen headlights
Power windows with driver's side express down	Heated outside power mirrors
Power door locks	Variable intermittent wipers
2-stage remote keyless entry with panic function	Body-coloured front bumper
Air conditioning	Privacy glass
AM/FM/CD/MP3 player with 6 speakers	Chrome rear bumper
Cruise control	Aluminum alloy wheels (17 inch)
Tachometer	Rear window defroster with timer
Digital clock	Engine block heater
Low fuel warning indicator	Active front seat head restraints
Steering lock	Dual front airbags
Tilt steering wheel	Front seat-mounted side airbags
Centre cabin light with fade-out (3 position)	Side-curtain airbags
Front map lights	ABS with EBD (Electronic Brake Distribution)
Floor mats (front & rear)	Tire pressure monitoring system
Sun visors with extensions	Engine immobilizer
Cloth seats	3-point ELR seat belts for all seating positions
Sunglass holder	Pre-tensioners for front seat belts
Vanity mirrors	Centre high mounted rear stop lamp
Cup holders (2 in front console / 2 in rear console)	Height adjustable outboard front seat belt anchorage
Day / night rear view mirror	Child-proof rear door locks
Split-folding seatbacks (60/40)	Daytime running lights
Head restraints	Side impact beams
Front seat centre armrest with storage compartment	
Front & rear door armrests	
3 assist grips	
Front door bottle holders	

2009 Equator



Works hard. Plays harder.

Get the best of both worlds with the 2009 Suzuki Equator – a dependable off-road performer that's designed to fit in with your active lifestyle. With its class leading power at your disposal, you'll be able to get your toys even closer to where you love to play. Plus it's built to withstand the punishment it'll surely endure while it helps you push your own personal limits. All this from a pickup that is as accommodating as it is tough, making it the obvious choice for today's adventure seeker.

2009 EQUATOR AT A GLANCE

- Class leading power
- Standard 4 wheel drive
- Durable spray-on bed liner
- 2767 kg (6100 lb) towing capacity

Grand Vitara SX4 Hatchback SX4 Sedan Swift+ XL7 Equator

20
09

Visit your local
Suzuki dealer today

suzuki.ca

SUZUKI SECURE ADVANTAGE PROTECTION: We are proud to deliver each 2009 Suzuki with Suzuki Secure Advantage Protection warranty coverage at no additional cost. The Suzuki Secure Advantage Protection plan features a 5-year/100,000 kilometre Powertrain Warranty, a 3-year/60,000 kilometre New Vehicle Limited Warranty and a 5-year unlimited mileage Anti-Perforation warranty. All warranties are zero deductible and fully transferable at no cost. **ROADSIDE ASSISTANCE:** For added peace of mind, SUZUKI SECURE ADVANTAGE PROTECTION includes numerous roadside assistance benefits. Wherever you may be in Canada or the continental United States, should you require roadside service for towing due to collision or mechanical problems, battery boost, if you have run out of fuel, or locked your keys in your car, have a flat tire or require winching or extrication to get you back on the road, Suzuki Secure Advantage Roadside Assistance has you covered. At no additional cost to you. Just call our toll-free number and a bilingual Suzuki Secure Advantage Roadside Assistance counsellor will help you on your way, 24 hours/day, 365 days/year. This plan also features Trip Interruption benefits so if you are more than 100 kilometres from home and your vehicle is undrivable for any reason, you can make alternate arrangements and request reimbursement for expenses incurred within 3 days and up to \$300. Suzuki Secure Advantage Roadside Assistance covers your 2009 Suzuki for 3 years with no mileage limitations. **SUZUKI PROTECTION PLAN:** Should you plan to drive your new Suzuki farther or longer than the coverage provided by the Suzuki New Vehicle Limited Warranty, the Suzuki Protection Plan will be of special interest to you. Suzuki Protection Plan provides you with the ability to enhance and extend coverage already provided by the new vehicle limited warranty. Suzuki Protection Plan offers you affordable, cost-effective peace of mind in the event of unexpected mechanical failure or other roadside emergencies for up to 7 years or 140,000 kilometres. Suzuki Protection Plan offers a vast choice of coverage levels, terms and deductibles allowing you to select the specific plan best suited to your ownership requirements. Ask your Suzuki dealer for a complete explanation of the benefits, coverages, limitations and exclusions of Suzuki Protection Plan, to better assist you in choosing the coverage that best suits your needs. The Suzuki Logo, Suzuki, XL7, Grand Vitara, SX4, Swift+ and Equator are registered trademarks of Suzuki Motor Corporation of Japan. **DRIVE RESPONSIBLY. BUCKLE UP FOR SAFETY—DON'T DRINK AND DRIVE.** Specifications and equipment based on information available at time of printing and subject to change without notice, and may differ in each sales area. Some vehicles shown with optional equipment. Colours shown may vary from actual colours. For more details on 2009 options, accessories and specifications, contact your local Suzuki dealer. To avoid injury from an inflating airbag always place children twelve years old and under in the rear seat. Always move both driver and passenger seats as far back from airbags as practical; never transport a child in a rear-facing seat in the front seat. Always use the seat belts and buckle up properly. Fuel economy estimates are determined by using Transport Canada approved testing methods. ©2008 Suzuki Canada Inc. *MSRP are current at time of printing and are subject to change without notice. Dealers may sell for less.



Way of Life!