

00 SX4



WWW.SUZUKI.CA



Way of Life!

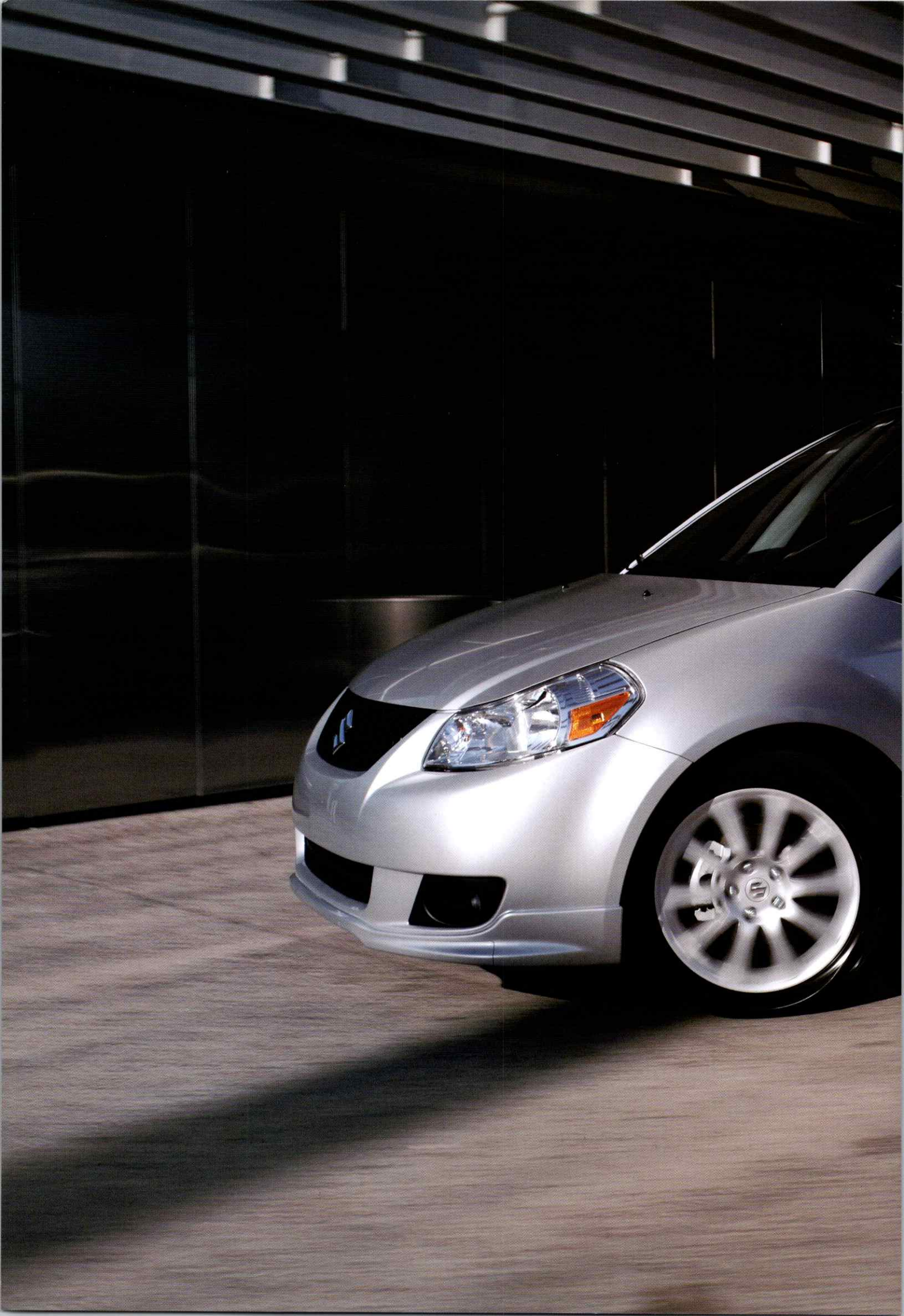


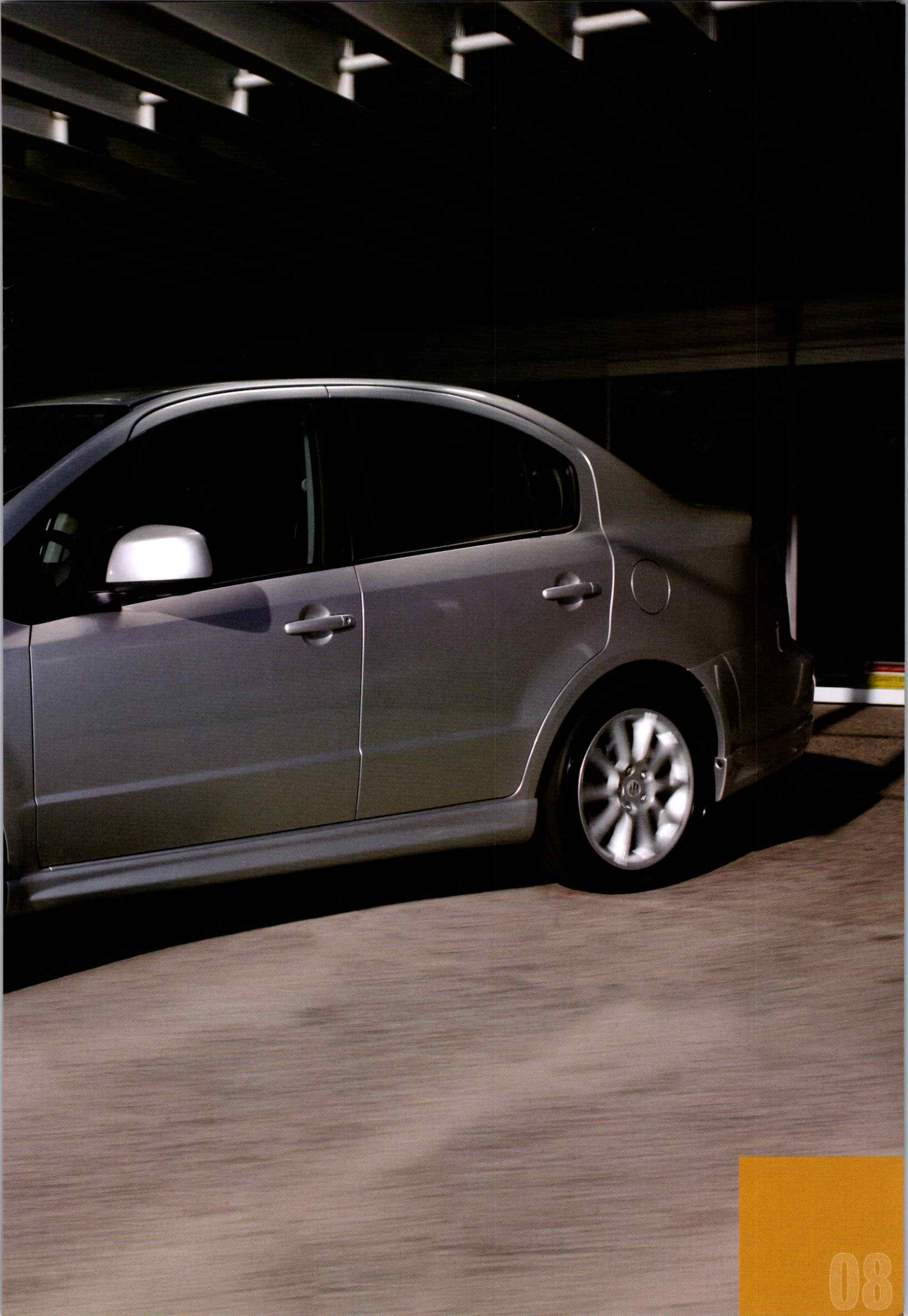
TWO DIFFERENT LOOKS — ONE GREAT CAR

SX4

If you want great bang for your buck, the SX4 is an ideal choice. Both the hatchback and sedan versions look great, are affordably priced, feature spacious and well equipped interiors, and deliver a quiet, smooth ride. And if you need the extra traction of intelligent all-wheel drive, it's available as an option on the hatchback.







08 PERFORMANCE

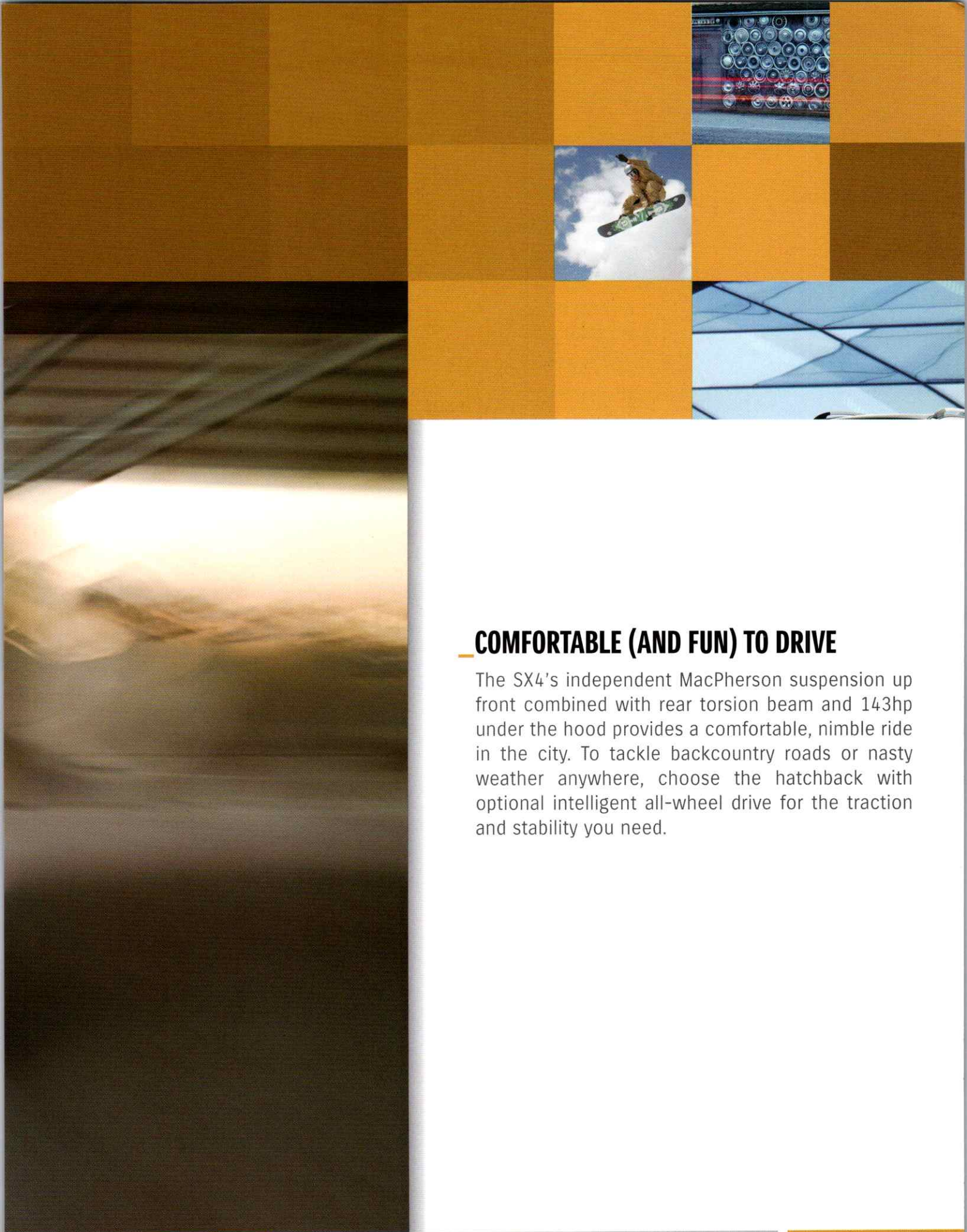


FEATURES INCLUDE



← 143-HP, 2.0 LITRE, 16-VALVE,
4-CYLINDER ENGINE



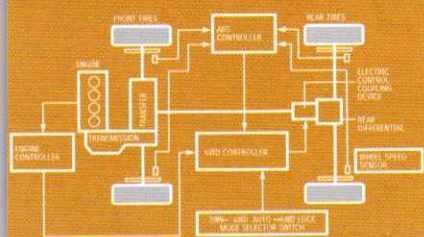


COMFORTABLE (AND FUN) TO DRIVE

The SX4's independent MacPherson suspension up front combined with rear torsion beam and 143hp under the hood provides a comfortable, nimble ride in the city. To tackle backcountry roads or nasty weather anywhere, choose the hatchback with optional intelligent all-wheel drive for the traction and stability you need.

INTELLIGENT ALL-WHEEL DRIVE (i-AWD) (OPTIONAL ON HATCHBACK)

AVAILABLE i-AWD IS A THREE-MODE, SWITCHABLE SYSTEM THAT DELIVERS ALL-WHEEL TRACTION FOR LOW GRIP SURFACES SUCH AS GRAVEL, SAND AND SNOWY CONDITIONS, A LOCK SETTING WHEN MAXIMUM TRACTION IS NEEDED, AND FRONT-WHEEL DRIVE WHICH IMPROVES EVERYDAY FUEL ECONOMY.







03 EXTERIOR - HAT



FEATURES INCLUDE



← ROOF RAILS (JX, J LX)



CHBACK



PERSONALITY TO SPARE

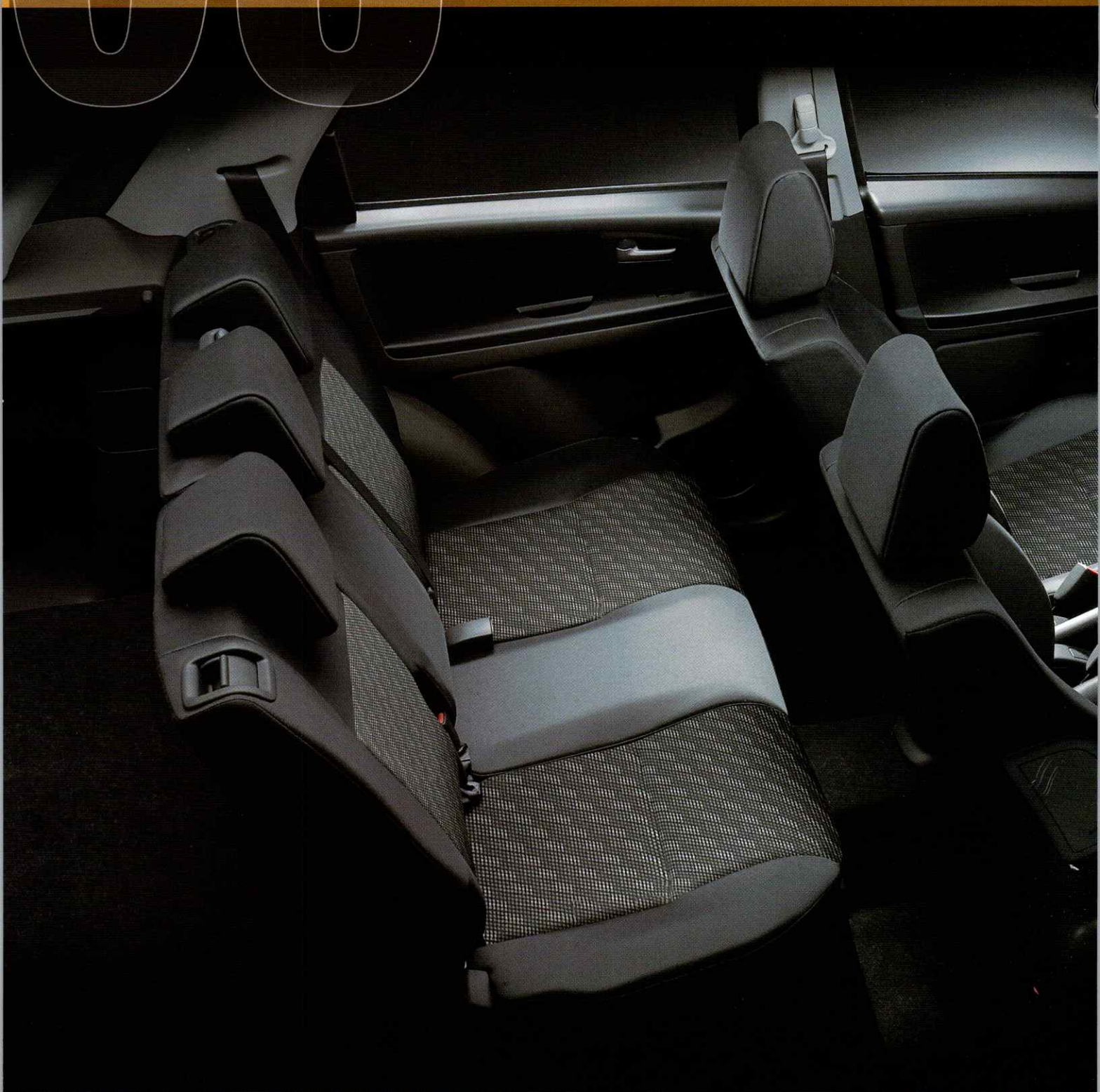
The SX4 hatchback is many things: bold yet playful, sporty yet rugged. Designed by renowned Italdesign Studio, this car features sleek lines and smart curves you're going to love. And so will everyone else.

← FOG LAMPS (JLX)



← 16" ALUMINUM ALLOY WHEELS
(JX, JLX)

INTERIOR - HATCH



FEATURES INCLUDE



← GO TOP DOWN FOR EXTRA
HORIZONTAL SPACE.



HBACK



GO WHERE YOU WANNA GO, IN COMFORT

Step into the SX4 hatchback and you'll discover the open, airy feel inside, the generous cargo space, as well as the considerable head and leg room. While the spaciousness is impressive, the list of comfort features is even better — air conditioning, power windows and locks, remote keyless entry, and a sensational sound system. What really sets the SX4 hatchback apart, though, is the availability of intelligent all-wheel drive — rare in a vehicle this size and in this price range.

GO 60-40 AND SPLIT THE DIFFERENCE.



GO CARGO AND LOAD UP
WITH JUST ABOUT ANYTHING.

EXTERIOR - SED



FEATURES INCLUDE



17" ALUMINUM ALLOY WHEELS
(SPORT)



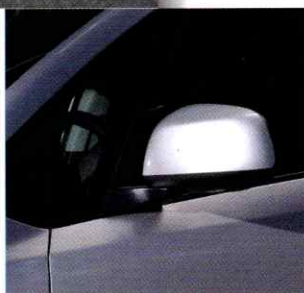
A N



SOPHISTICATED STYLE

The brand new SX4 sedan is just as bold and sleek as its hatchback sibling, but with its own unique style. Its contemporary looks are sophisticated but still fun, refined yet still sporty.

← **HALOGEN HEADLIGHTS**



← **BODY-COLOURED, HEATED,
POWER MIRRORS (SPORT)**

008 INTERIOR - SED



FEATURES INCLUDE



← **AM/FM/6 CD/MP3/WMA PLAYER WITH
8 SPEAKERS AND A SUBWOOFER (SPORT)**
FULLY EQUIPPED TO MEET EVERY MUSIC
LOVER'S NEEDS.



A N



IT'S WHAT'S INSIDE THAT COUNTS

The SX4 sedan's interior is just as sophisticated as its exterior. The cabin is spacious and features supportive, comfortable seats and tasteful brushed aluminum design details. There's also a great sound system with speed sensing volume control, power windows and air conditioning to make your trips enjoyable.

INFORMATION DISPLAY

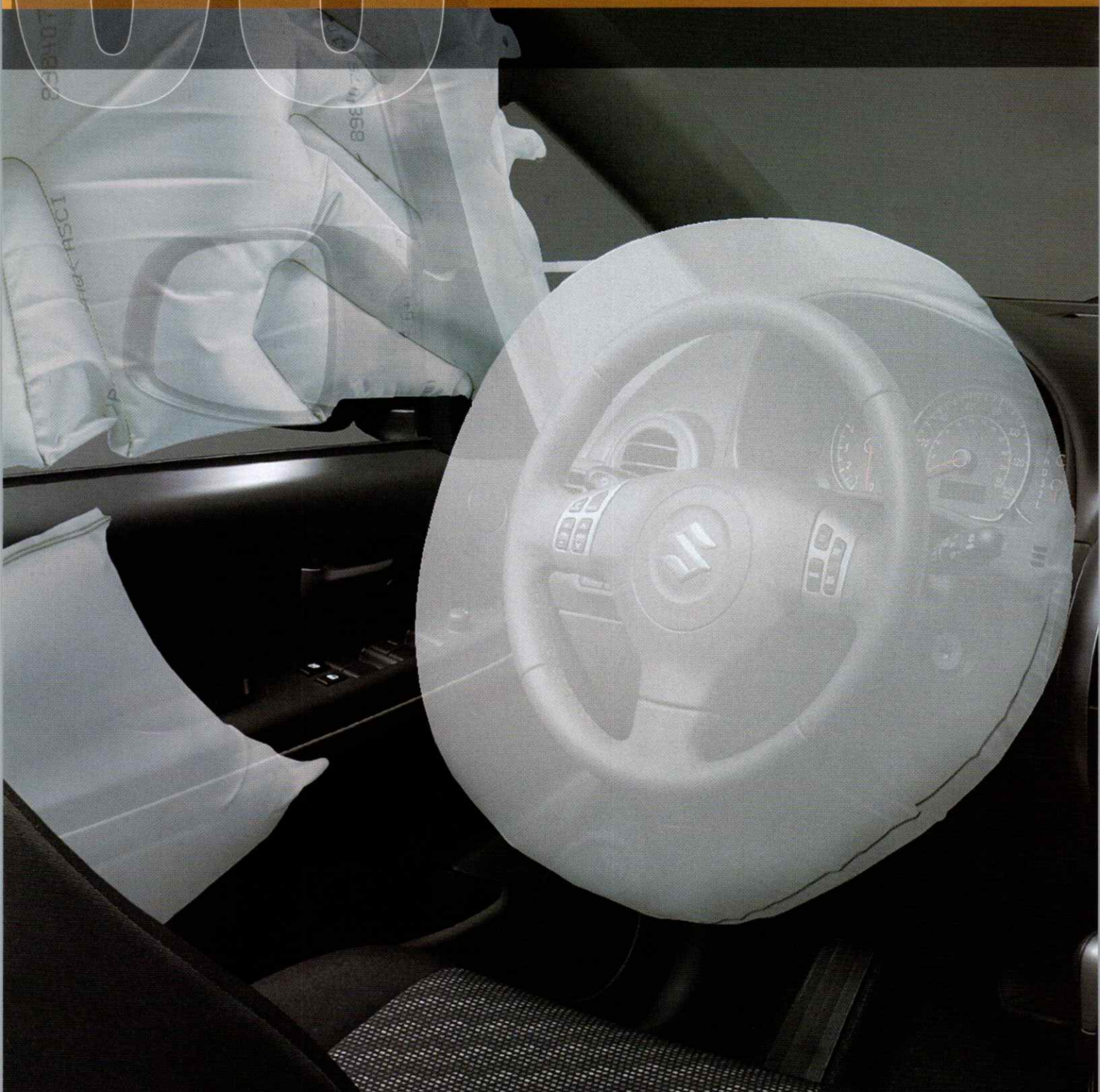
TIME, OUTSIDE TEMPERATURE, DISTANCE TO EMPTY AND AVERAGE FUEL CONSUMPTION ARE BUT A GLANCE AWAY.



STEERING WHEEL MOUNTED AUDIO CONTROLS (SPORT)

VOLUME AND FUNCTION ADJUSTMENTS AT YOUR FINGERTIPS.

SAFETY



FEATURES INCLUDE



STANDARD ANTILOCK BRAKING SYSTEM (ABS)

THE SX4 COMES STANDARD WITH ABS THAT FEATURES BRAKE ASSIST AND ELECTRONIC BRAKE FORCE DISTRIBUTION (EBD). 4-WHEEL DISC BRAKES (JX, J LX, SPORT).



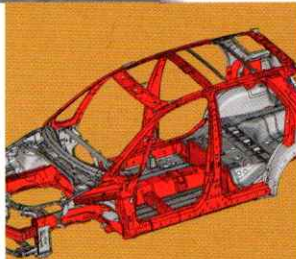


SAFE DRIVING WHATEVER THE WEATHER

The SX4 is one safe car! It comes with six airbags – standard. Anti-lock brakes with electronic brake-force distribution – standard. Side impact beams – standard. Oh, and there's also the option to choose intelligent all-wheel drive in the hatchback for even more stability and safety on the road.

3-POINT ELR SEAT BELTS

WITH THESE STRAPPED OVER YOU, WE CAN SAFELY SAY THAT YOU WON'T BE GOING ANYWHERE SHOULD YOUR DRIVE NOT GO AS PLANNED.



SAFETY CAGE

PROTECTION EVERY WHICH WAY YOU LOOK.

FEATURES - SX4 HATCHBACK

	SX4	JX	JLX
COMFORT			
Power steering	S	S	S
Power windows with driver's express down	S	S	S
Power door locks	S	S	S
2-stage remote keyless entry with panic function	S	S	S
SmartPass™ keyless entry and start system	N/A	N/A	S
Air conditioning	S (Manual)	S (Manual)	S (Climate Control)
Sound System AM/FM/CD/MP3/WMA player (4 speakers)	S	S	N/A
AM/FM /6 CD/MP3/WMA player (8 speakers w/subwoofer)	N/A	N/A	S
Steering wheel mounted audio controls	N/A	S	S
Speed sensing volume control	S	S	S
XM satellite radio ready (optional receiver & antenna required)	S	S	S
Cruise control	N/A	S	S
INSTRUMENT PANEL			
Tachometer	S	S	S
Door ajar warning lamps	S	S	S
Seat belt reminders (driver & front passenger)	S	S	S
Information display (clock, outside temperature, fuel consumption & range)	S	S	S
Light-off / key reminder	S	S	S
Low fuel warning indicator	S	S	S
Leather-wrapped steering wheel	N/A	S	S
Steering lock	S	S	S
Tilt steering	S	S	S
INTERIOR			
Centre cabin light with fade-out (3 position)	S	S	S
Cargo area light	S	S	S
Front map lights	S	S	S
Floor mats (front & rear)	S	S	S
Sun visors with vanity mirrors	S	S	S
Cup holders (2 front / 1 rear)	S	S	S
Bottle holders (2 front / 2 rear)	S	S	S
Day / night rear view mirror	S	S	S
Reclining front seats	S	S	S
Split-folding rear seatback (60/40)	S	S	S
Front/rear head restraints (2/3)	S	S	S
Front & rear door armrests	S	S	S
Assist grips (2 front / 2 rear)	S	S	S
Front door pockets	S	S	S
Accessory power outlet	S	S	S
Cargo area cover	S	S	S
Driver's footrest	S	S	S
EXTERIOR			
Halogen headlights	S	S	S
Electric rear hatch release	S	S	S
Wheelarch extensions	N/A	S	S
Side skirts	N/A	S	S
Power mirrors	S	S (Heated)	S (Heated)
Variable intermittent wipers	S	S	S
Rear window wiper/washer with fixed intermittent	S	S	S
Rear window defroster	S	S	S
Remote fuel door release	S	S	S
Body-coloured bumpers	S	S	S
Body-coloured mirrors & door handles	S	S	S
Roof rails	N/A	S (black)	S (2 tone silver)
Tinted glass	S	S	S
Fog lamps	N/A	N/A	S
Wheel covers	S	N/A	N/A
Aluminum alloy wheels	N/A	S	S
SAFETY AND SECURITY			
Engine block heater	S	S	S
Intelligent All-Wheel Drive (i-AWD)	N/A	0	S
Dual front airbags	S	S	S
Front seat-mounted side airbags	S	S	S
Side-curtain airbags	S	S	S
ABS with Brake Assist and EBD (Electronic Brake-Force Distribution)	S	S	S
ESP* (Electronic Stability Program)	N/A	N/A	S
Engine immobilizer	S	S	S
3-point ELR seat belts (for all 5 seating positions)	S	S	S
Pre-tensioners for front seat belts	S	S	S
Centre high-mounted rear stop lamp	S	S	S
Childseat tether anchorage (3 rear)	S	S	S
ISO-FIX child safety seat provisions (2 rear)	S	S	S
Front seat belt shoulder height adjusters	S	S	S
Daytime running lights	S	S	S
Child-proof rear door locks	S	S	S
Side impact beams	S	S	S

*ESP is a registered trademark of Daimler-Chrysler AG

S : Standard

0 : Optional

N/A : Not Available

SPECIFICATIONS

EXTERIOR DIMENSIONS

			FWD	AWD
Overall length	mm (inch)	SX4: 4,115 (162.0) / JX: 4,135 (162.8)	4,135 (162.8)	
Overall width	mm (inch)	SX4: 1,730 (68.1) / JX: 1,755 (69.1)	1,755 (69.1)	
Overall height	mm (inch)	SX4: 1,575 (62.0) / JX: 1,605 (63.2)	1,605 (63.2)	
Wheelbase	mm (inch)	2,500 (98.4)	2,500 (98.4)	
Tread	Front	mm (inch)	1,500 (59.1)	1,500 (59.1)
	Rear	mm (inch)	1,495 (58.9)	1,495 (58.9)
Ground clearance	mm (inch)	SX4: 165 (6.5) / JX: 175 (6.9)	175 (6.9)	
Minimum turning radius	m (ft)	5.3 (17.4)	5.3 (17.4)	
Seating capacity	persons	5	5	

INTERIOR DIMENSIONS

Head Room	Front	mm (inch)	1,006 (39.6)
	Rear	mm (inch)	954 (37.6)
Leg Room	Front	mm (inch)	1,051 (41.4)
	Rear	mm (inch)	913 (35.9)
Shoulder Room	Front	mm (inch)	1,355 (53.3)
	Rear	mm (inch)	1,341 (52.8)
Hip Room	Front	mm (inch)	1,296 (51.0)
	Rear	mm (inch)	1,193 (47.0)
Cargo Length	Behind 2nd Seat	mm (inch)	433 (17.0)
	2nd Seat Folded	mm (inch)	1,285 (50.6)
Cargo Width	mm (inch)	1,026 (40.4)	
Cargo Height	mm (inch)	891 (35.1)	
Luggage Capacity	litres (cubic feet)	232 (8.2)	

ENGINE

		FWD	AWD
Number of cylinders		4	4
Number of valves		16	16
Piston displacement	cc	1,995	1,995
Bore x stroke	mm (inch)	84 x 90 (3.31 x 3.54)	84 x 90 (3.31 x 3.54)
Compression ratio		10.5 : 1	10.5 : 1
Maximum output	hp @ rpm	143 @ 5,800	143 @ 5,800
Maximum torque	lb.ft. @ rpm	136 @ 3,500	136 @ 3,500
Fuel distribution		Multi Point Injection	Multi Point Injection

TRANSMISSION

		FWD	AWD
Type		5MT	4AT
Gear ratio	1st	3.545	3.672
	2nd	1.904	2.098
	3rd	1.310	1.391
	4th	0.969	1.000
	5th	0.725	-
	Reverse	3.250	4.021
Final gear ratio		4.411	2.813

CHASSIS

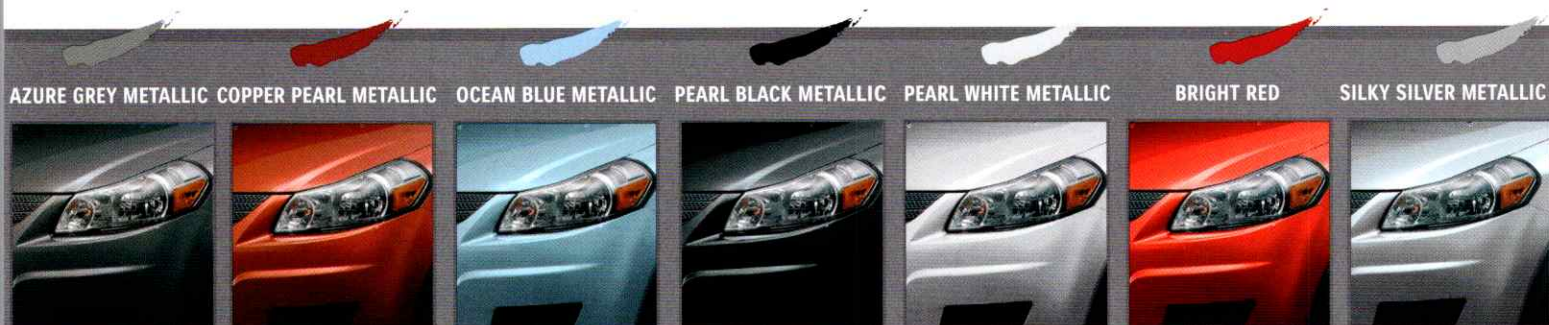
Steering		Power, Rack & Pinion	Power, Rack & Pinion
Brakes	Front	Ventilated Disc	Ventilated Disc
	Rear	Drum (SX4) / Disc (JX)	Disc
Suspension	Front	MacPherson Strut	MacPherson Strut
	Rear	Torsion Beam	Torsion Beam
Tires		P195/65R15 (SX4) / P205/60R16 (JX)	P205/60R16

WEIGHTS

Curb weight (min.)	kg (lbs)	1,200 (2,646)	1,260 (2,778)	1,295 (2,855)	1,330 (2,932)
Gross vehicle weight	kg (lbs)	1,675 (3,693)		1,725 (3,803)	

FUEL CONSUMPTION

Fuel tank capacity	litres	50	45
Fuel economy City / Highway		MT	AT
L/100km (mpg)	Base	9.2/6.5 (31/43)	9.0/6.5 (32/44)
	JX	9.5/6.8 (30/42)	9.2/6.7 (31/42)
	AWD	9.9/7.1 (28/40)	9.9/7.1 (29/40)



EXTERIOR COLOURS

	SX4	JX/JLX	INTERIOR COLOURS
Azure Grey Metallic	N/A	X	Dark Grey
Copper Pearl Metallic	N/A	X	Dark Grey
Ocean Blue Metallic	X	X	Dark Grey
Pearl Black Metallic	X	X	Dark Grey
Pearl White Metallic	X	X	Dark Grey
Bright Red	N/A	X	Dark Grey
Silky Silver Metallic	X	X	Dark Grey

SUZUKI SECURE ADVANTAGE PROTECTION We are proud to deliver each 2008 Suzuki with Suzuki Secure Advantage Protection warranty coverage at no additional cost. The Suzuki Secure Advantage Protection plan features a 5-year/100,000 kilometre Powertrain Warranty, a 3-year/60,000 kilometre New Vehicle Limited Warranty and a 5-year unlimited mileage Anti-Perforation warranty. All warranties are zero deductible and fully transferable at no cost. **ROADSIDE ASSISTANCE** For added peace of mind, SUZUKI SECURE ADVANTAGE PROTECTION includes numerous roadside assistance benefits. Wherever you may be in Canada or the continental United States, should you require roadside service for towing due to collision or mechanical problems, battery boost, if you have run out of fuel, or locked your keys in your car, have a flat tire or require winching or extrication to get you back on the road, Suzuki Secure Advantage Roadside Assistance has you covered. At no additional cost to you, just call our toll-free number and a bilingual Suzuki Secure Advantage Roadside Assistance counsellor will help you on your way, 24 hours/day, 365 days/year. This plan also features Trip Interruption benefits so if you are more than 100 kilometres from home and your vehicle is undrivable for any reason, you can make alternate arrangements and request reimbursement for expenses incurred within 3 days and up to \$300. Suzuki Secure Advantage Roadside Assistance covers your 2008 Suzuki for 5 years with no mileage limitations. **SUZUKI PROTECTION PLAN** Should you plan to drive your new Suzuki farther or longer than the coverage provided by the Suzuki New Vehicle Limited Warranty, the Suzuki Protection Plan will be of special interest to you. Suzuki Protection Plan provides you with the ability to enhance and extend coverage already provided by the new vehicle limited warranty. Suzuki Protection Plan offers you affordable, cost-effective peace of mind in the event of unexpected mechanical failure or other roadside emergencies for up to 7 years or 140,000 kilometres. Suzuki Protection Plan offers a vast choice of coverage levels, terms and deductibles allowing you to select the specific plan best suited to your ownership requirements. Ask your Suzuki dealer for a complete explanation of the benefits, coverages, limitations and exclusions of Suzuki Protection Plan, to better assist you in choosing the coverage that best suits your needs.

Suzuki, XL7, Grand Vitara, SX4 and Swift+ are registered trademarks of Suzuki Motor Corporation of Japan. **DRIVE RESPONSIBLY. BUCKLE UP FOR SAFETY—DON'T DRINK AND DRIVE.** Specifications and equipment based on information available at time of printing and subject to change without notice, and may differ in each sales area. Some vehicles shown with optional equipment. Colours shown may vary from actual colours. For more details on 2008 options, accessories and specifications, contact your local Suzuki dealer. To avoid injury from an inflating airbag always place children twelve years old and under in the rear seat. Always move both driver and passenger seats as far back from airbags as practical, never transport a child in a rear-facing seat in the front seat. Always use the seat belts and buckle up properly. Fuel economy estimates are determined by using Transport Canada approved testing methods.

FEATURES - SX4 SEDAN

COMFORT		BASE	SPORT
Power steering		S	S
Power windows with driver's express down		S	S
Power door locks		S	S
2-stage remote keyless entry with panic function		S	S
Air conditioning		S (Manual)	S (Climate Control)
Sound System	AM/FM/CD/MP3/WMA player (4 speakers)	S	N/A
	AM/FM /6 CD/MP3/WMA player (8 speakers w/subwoofer)	N/A	S
	Steering wheel mounted audio controls	N/A	S
	Speed sensing volume control	S	S
	XM satellite radio ready (optional receiver & antenna required)	S	S
Cruise control		N/A	S
INSTRUMENT PANEL			
Tachometer		S	S
Door ajar warning lamps		S	S
Seat belt reminders (driver & front passenger)		S	S
Information display (clock, outside temperature, fuel consumption & range)		S	S
Light-off / key reminder		S	S
Low fuel warning indicator		S	S
Leather-wrapped steering wheel		N/A	S
Steering lock		S	S
Tilt steering		S	S
INTERIOR			
Centre cabin light with fade-out (3 position)		S	S
Trunk light		S	S
Front map lights		S	S
Floor mats (front & rear)		S	S
Sun visors with vanity mirrors		S	S
Cup holders (2 front / 1 rear)		S	S
Bottle holders (2 front / 2 rear)		S	S
Day / night rear view mirror		S	S
Reclining front seats		S	S
Front/rear head restraints (2/3)		S	S
Front & rear door armrests		S	S
Assist grips (2 front / 2 rear)		S	S
Front door pockets		S	S
Accessory power outlet		S	S
Driver's footrest		S	S
EXTERIOR			
Halogen headlights		S	S
Body kit - body-coloured front & rear valance, side sill extensions		N/A	S
Power mirrors		S	S (Heated)
Variable intermittent wipers		S	S
Rear window defroster		S	S
Remote fuel door release		S	S
Remote trunk release		S	S
Body-coloured bumpers		S	S
Body-coloured mirrors & door handles		S	S
Tinted glass		S	S
Fog lamps		N/A	S
Wheel covers		S	N/A
Aluminum alloy wheels		N/A	S
SAFETY AND SECURITY			
Engine block heater		S	S
Dual front airbags		S	S
Front seat-mounted side airbags		S	S
Side-curtain airbags		S	S
ABS with Brake Assist and EBD (Electronic Brake-Force Distribution)		S	S
Engine immobilizer		S	S
3-point ELR seat belts (for all 5 seating positions)		S	S
Pre-tensioners for front seat belts		S	S
Centre high-mounted rear stop lamp		S	S
Childseat tether anchorage (3 rear)		S	S
ISO-FIX child safety seat provisions (2 rear)		S	S
Front seat belt shoulder height adjusters		S	S
Daytime running lights		S	S
Child-proof rear door locks		S	S
Side impact beams		S	S

S : Standard

N/A : Not Available

SPECIFICATIONS

EXTERIOR DIMENSIONS

			BASE	SPORT
Overall length	mm (inch)		4,490 (176.8)	4,510 (177.6)
Overall width	mm (inch)		1,730 (68.1)	1,730 (68.1)
Overall height	mm (inch)		1,545 (60.8)	1,545 (60.8)
Wheelbase	mm (inch)		2,500 (98.4)	2,500 (98.4)
Tread	Front	mm (inch)	1,500 (59.1)	1,500 (59.1)
	Rear	mm (inch)	1,495 (58.9)	1,495 (58.9)
Ground clearance	mm (inch)		165 (6.5)	160 (6.3)
Minimum turning radius	m (ft)		5.3 (17.4)	5.3 (17.4)
Seating capacity	persons		5	5

INTERIOR DIMENSIONS

Head Room	Front	mm (inch)	1,006 (39.6)
	Rear	mm (inch)	953 (37.5)
Leg Room	Front	mm (inch)	1,051 (41.4)
	Rear	mm (inch)	909 (35.8)
Shoulder Room	Front	mm (inch)	1,355 (53.3)
	Rear	mm (inch)	1,341 (52.8)
Hip Room	Front	mm (inch)	1,296 (51.0)
	Rear	mm (inch)	1,083 (42.6)
Interior Volume Index	sq. metres (cubic feet)		2.94 (104.0)
Cargo Index	litres (cubic feet)		439 (15.5)

ENGINE

Number of cylinders		4
Number of valves		16
Piston displacement	cc	1,995
Bore x stroke	mm (inch)	84 x 90 (3.31 x 3.54)
Compression ratio		10.5 : 1
Maximum output	hp @ rpm	143 @ 5,800
Maximum torque	lb.ft. @ rpm	136 @ 3,500
Fuel distribution		Multi Point Injection

TRANSMISSION

		BASE		SPORT	
Type		5MT	4AT	5MT	4AT
Gear ratio	1st	3.545	3.672	3.545	3.672
	2nd	1.904	2.098	1.904	2.098
	3rd	1.310	1.391	1.310	1.391
	4th	0.969	1.000	0.969	1.000
	5th	0.725	-	0.725	-
	Reverse	3.250	4.021	3.250	4.021
Final gear ratio		4.411	2.813	4.411	2.813

CHASSIS

Steering		Power, Rack & Pinion	Power, Rack & Pinion
Brakes	Front	Ventilated Disc	Ventilated Disc
	Rear	Drum	Disc
Suspension	Front	MacPherson Strut	MacPherson Strut
	Rear	Torsion Beam	Torsion Beam
Tires		P195/65R15	P205/50R17

WEIGHTS

Curb weight (min.)	kg (lbs)	1,210 (2,668)	1,245 (2,745)	1,210 (2,668)	1,245 (2,745)
Gross vehicle weight	kg (lbs)	1,675 (3,693)		1,675 (3,693)	

FUEL CONSUMPTION

Fuel tank capacity	litres	50	50
Fuel economy	City / Highway	MT	AT
L/100km (mpg)	Base	9.2/6.5 (31/43)	9.0/6.5 (32/44)
	Sport	9.5/6.8 (30/42)	9.2/6.7 (31/42)

AZURE GREY METALLIC



PEARL BLACK METALLIC



PEARL WHITE METALLIC



PEARL RED METALLIC



SILKY SILVER METALLIC



EXTERIOR COLOURS

	BASE	SPORT
Azure Grey Metallic	Beige	Dark Grey
Pearl Black Metallic	Beige	Dark Grey
Pearl White Metallic	Beige	Dark Grey
Pearl Red Metallic	N/A	Dark Grey
Silky Silver Metallic	Dark Grey	Dark Grey

INTERIOR COLOURS

BASE

SPORT

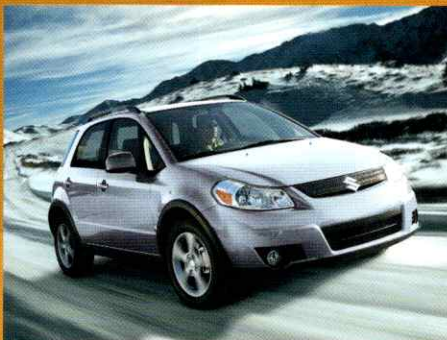
SUZUKI SECURE ADVANTAGE PROTECTION We are proud to deliver each 2008 Suzuki with Suzuki Secure Advantage Protection coverage at no additional cost. The Suzuki Secure Advantage Protection plan features a 5-year/100,000 kilometre Powertrain Warranty, a 3-year/50,000 kilometre New Vehicle Limited Warranty and a 5-year unlimited mileage Anti-Perforation warranty. All warranties are zero deductible and fully transferable at no cost. **ROADSIDE ASSISTANCE** For added peace of mind, SUZUKI SECURE ADVANTAGE PROTECTION includes numerous roadside assistance benefits. Wherever you may be in Canada or the continental United States, should you require roadside service for towing due to collision or mechanical problems, battery boost, if you have run out of fuel, or locked your keys in your car, have a flat tire or require winching or extrication to get you back on the road, Suzuki Secure Advantage Roadside Assistance has you covered. At no additional cost to you, just call our toll-free number and a bilingual Suzuki Secure Advantage Roadside Assistance counsellor will help you on your way, 24 hours/day, 365 days/year. This plan also features Trip Interruption benefits so if you are more than 100 kilometres from home and your vehicle is undrivable for any reason, you can make alternate arrangements and request reimbursement for expenses incurred within 3 days and up to \$100. Suzuki Secure Advantage Roadside Assistance covers your 2008 Suzuki for 5 years with no mileage limitations. **SUZUKI PROTECTION PLAN** Should you plan to drive your new Suzuki farther or longer than the coverage provided by the Suzuki New Vehicle Limited Warranty, the Suzuki Protection Plan will be of special interest to you. Suzuki Protection Plan provides you with the ability to enhance and extend coverage already provided by the new vehicle limited warranty. Suzuki Protection Plan offers you affordable, cost-effective peace of mind in the event of unexpected mechanical failure or other roadside emergencies for up to 7 years or 140,000 kilometres. Suzuki Protection Plan offers a vast choice of coverage levels, terms and deductibles allowing you to select the specific plan best suited to your ownership requirements. Ask your Suzuki dealer for a complete explanation of the benefits, coverages, limitations and exclusions of Suzuki Protection Plan, to better assist you in choosing the coverage that best suits your needs.

Suzuki, XL7, Grand Vitara, SX4 and Swift are registered trademarks of Suzuki Motor Corporation of Japan. **DRIVE RESPONSIBLY. BUCKLE UP FOR SAFETY—DON'T DRINK AND DRIVE.** Specifications and equipment based on information available at time of printing and subject to change without notice, and may differ in each sales area. Some vehicles shown with optional equipment. Colours shown may vary from actual colours. For more details on 2008 options, accessories and specifications, contact your local Suzuki dealer. To avoid injury from an inflating airbag always place children twelve years old and under in the rear seat. Always move both driver and passenger seats as far back from airbags as practical; never transport a child in a rear-facing seat in the front seat. Always use the seat belts and buckle up properly. Fuel economy estimates are determined by using Transport Canada approved testing methods.

WWW.SUZUKI.CA



SX4 SEDAN



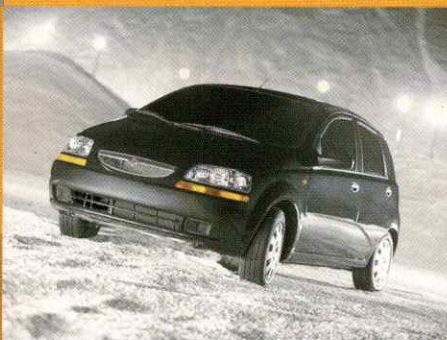
SX4 HATCHBACK



GRAND VITARA



XL7



SWIFT+



Way of Life!