

GRAND VITARA



WWW.SUZUKI.CA



Way of Life!



NO NEED TO COMPROMISE.

GRAND VITARA

You can have it all with Grand Vitara — A stylish looking vehicle with a roomy interior. Filled with comfort and safety features plus some fun toys. Providing a comfortable ride in the city yet truly capable of off-roading if you need to. All at an affordable price.





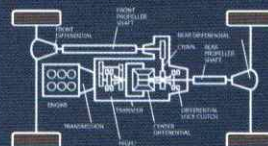
PERFORMANCE

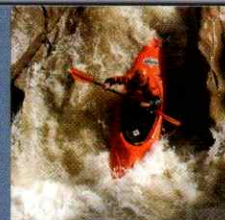


FEATURES INCLUDE



← **APPROACH AND DEPARTURE ANGLES**
HIGH GROUND CLEARANCE AND SHORT OVERHANGS PERMIT CONFIDENT MANOEUVRING OVER ROUGH TRAILS AND UNEVEN SURFACES, AS WELL AS THE ABILITY TO CROSS SHALLOW STREAMS.





THE BEST OF BOTH WORLDS

Grand Vitara performs just as well on city streets as it does off-road. Thanks to Grand Vitara's unibody construction and fully independent suspension, it offers a smooth and comfortable ride in the city. But the underlying truck-style ladder frame, 4 mode four-wheel-drive system and powerful engine combine to make Grand Vitara rugged enough to handle challenging off-road terrain.

4 MODE FOUR-WHEEL-DRIVE SYSTEM

FEATURES A NEUTRAL SETTING FOR FULL FLAT TOWING.
(IX, J LX, J LX-L)



185-HP, 2.7 LITRE, 24-VALVE, DOHC V6 ENGINE

AVAILABLE POWER IS THE BACKBONE OF PERFORMANCE.

EXTERIOR

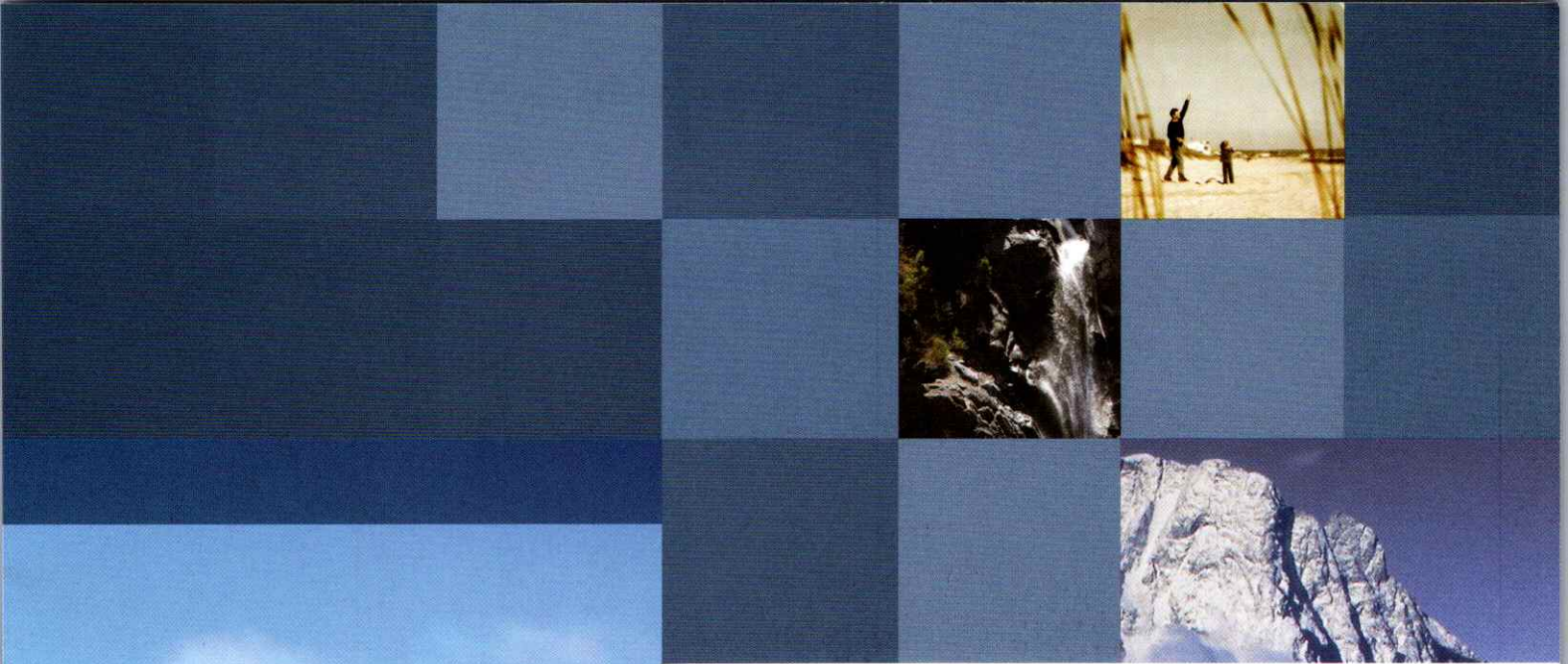


FEATURES INCLUDE



← **ALUMINUM WHEELS**
(16" ON JX, 17" ON JLX, J LX-L)





THE LOOK OF LUXURY

With clean, elegant lines, the Grand Vitara has a contemporary yet classic look. Its exterior has a profile that's been compared to more expensive sport utility vehicles on the market. All trim levels come with body-coloured bumpers/mirrors/door handles and a hard spare tire case on the rear. The JX, JLX and JLX Leather have some added bling – matte-finished aluminum alloy wheels, fog lamps and roof rails. With Grand Vitara, you get an upscale look without the upscale price.

**MULTI-REFLECTOR HALOGEN +
HEADLAMPS**



CROSS-SHAPED C-PILLAR DESIGN

INTERIOR



FEATURES INCLUDE



5-SPEED AUTOMATIC TRANSMISSION

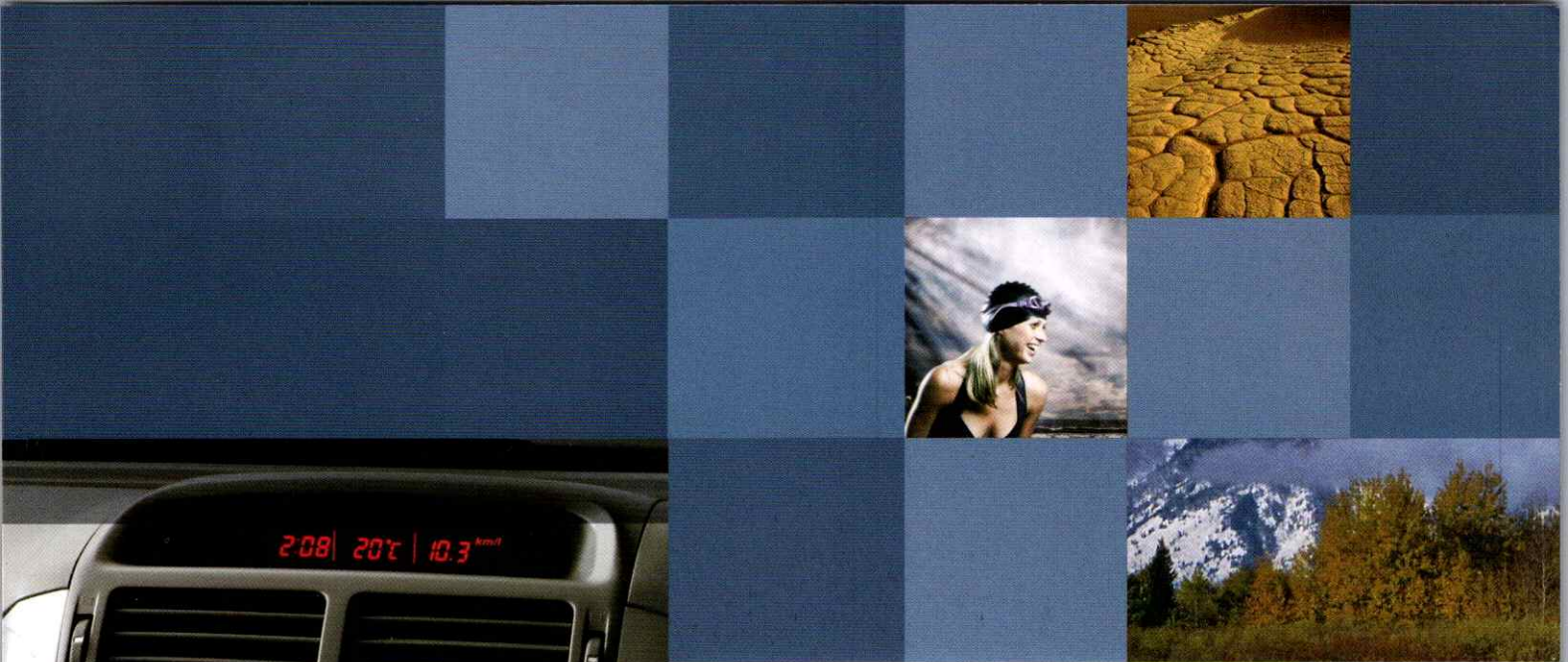
MAXIMIZES FUEL ECONOMY AND ENHANCES ENGINE PERFORMANCE. (OPTIONAL ON JA AND JX, STANDARD ON J LX AND J LX-L)



HOMELINK®

HOMELINK®** CAN BE PROGRAMMED TO CONTROL ALL KINDS OF ELECTRONIC DEVICES: GARAGE DOORS, COMMUNITY GATES AND HOME LIGHTING. (J LX-L)





THE FEATURES YOU NEED, THE TOYS YOU WANT

It's great fun getting to know your Grand Vitara. It comes packed with features and toys that make driving easy, comfortable and fun. Like the steering wheel mounted audio controls and speed sensing volume control for the awesome sound system. The SmartPass keyless entry and start system that comes standard in the JX, JLX and JLX Leather is the ultimate in convenience. There is no need for a separate ignition key. The SmartPass system acknowledges the presence of the fob and lets you turn on the ignition!

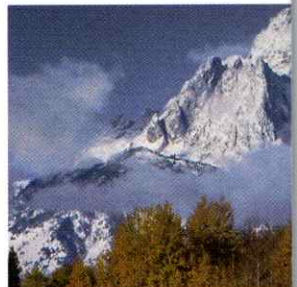
← AUTOMATIC AIR CONDITIONING

SELECT THE DESIRED TEMPERATURE AND GRAND VITARA DOES THE REST, HEATING OR COOLING THE INTERIOR AS REQUIRED.



← SMARTPASS™

GO KEYLESS, WITH OUR SMARTPASS.™ NOW YOU CAN LOCK AND UNLOCK YOUR GRAND VITARA — EVEN START AND STOP THE ENGINE (JX, JLX, JLX-L) — WITHOUT USING A KEY. NOW, THAT'S EASY ACCESS.



← STEERING-WHEEL-MOUNTED AUDIO CONTROLS

VOLUME AND FUNCTION ADJUSTMENTS AT YOUR FINGERTIPS.



← AM/FM/CD/MP3/WMA PLAYER

ALL GRAND VITARAS ARE XM SATELLITE RADIO READY AND, IN ADDITION, A 6-CD CHANGER AND SUBWOOFER COME STANDARD ON JX, JLX AND JLX-L.





SAFETY

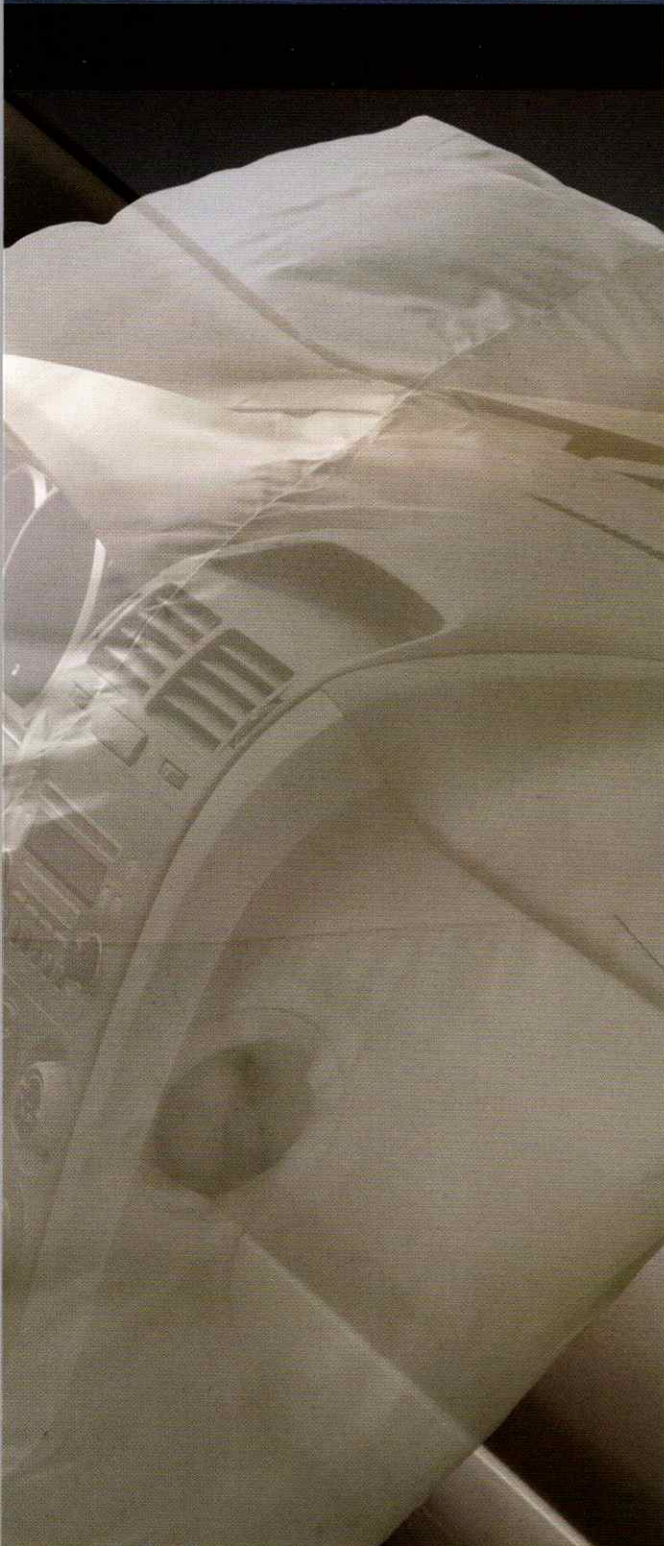


FEATURES INCLUDE



← **ELECTRONIC STABILITY PROGRAM (ESP®)**
BRAKES INDIVIDUAL WHEELS AND
CONTROLS ENGINE TORQUE IN
UNDERSTEER OR OVERSTEER
CONDITIONS TO HELP BRING THE
VEHICLE BACK TO ITS INTENDED LINE.



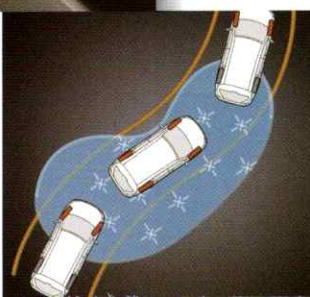


FULLY LOADED FOR PROTECTION

All of the latest safety features are standard equipment on all trim levels of Grand Vitara, not options. So, you'll enjoy the full protection of features like ABS with electronic brake-force distribution, 6 airbags (front, seat mounted side and side curtain), and an electronic stability program (ESP) with traction control, whatever your budget. Now, that's reassuring.

STANDARD ANTILOCK BRAKING SYSTEM (ABS)

GRAND VITARA COMES STANDARD WITH ABS THAT FEATURES ELECTRONIC BRAKE-FORCE DISTRIBUTION (EBD).



ELECTRONIC TRACTION CONTROL SYSTEM (TCS)

FOR MORE POSITIVE GRIP ON SLIPPERY SURFACES.

FEATURES

COMFORT	JA	JX	JLX	JLX LEATHER
Power steering	S	S	S	S
Power windows with drivers's express down	S	S	S	S
Power door locks	S	S	S	S
2-stage remote keyless entry with panic function	S	S	S	S
SmartPass™ keyless entry and start system	N/A	S	S	S
Automatic air conditioning	S	S	S	S
Micron air filter	S	S	S	S
Sound System AM/FM/CD/MP3/WMA player (4 speakers)	S	N/A	N/A	N/A
AM/FM/CD/MP3/WMA player (6 speakers w/subwoofer)	N/A	S	N/A	N/A
AM/FM/6-CD/MP3/WMA changer (6 speakers w/subwoofer)	N/A	N/A	S	S
Steering wheel mounted audio controls	S	S	S	S
Speed sensing volume control	S	S	S	S
XM satellite radio ready (optional receiver & antenna required)	S	S	S	S
Cruise control	N/A	S	S	S
Power glass sunroof with tilt and slide feature	N/A	N/A	S	S
INSTRUMENT PANEL				
Tachometer	S	S	S	S
Door ajar warning lamps	S	S	S	S
Seat belt reminders (driver & front passenger)	S	S	S	S
Information display (clock, outside temperature, fuel consumption & range)	S	S	S	S
Light-off / key reminder	S	S	S	S
Low fuel warning indicator	S	S	S	S
Steering lock	S	S	S	S
Leather-wrapped steering wheel	N/A	N/A	S	S
Tilt steering wheel	S	S	S	S
INTERIOR				
Centre cabin light with fade-out (3 position)	S	S	S	S
Rear cabin light (3 position)	S	S	S	S
Front map lights	S	S	S	S
Rear cargo light (2 position)	S	S	S	S
Front door courtesy lights	S	S	S	S
Floor mats (front & rear)	S	S	S	S
Seat material Fabric	S	S	S	N/A
Leather	N/A	N/A	N/A	S
Heated front seats	N/A	N/A	N/A	S
HomeLink** System	N/A	N/A	N/A	S
Sun visors with vanity mirrors	S	S	S	S
Cup holders (2 front / 2 rear)	S	S	S	S
Bottle holders (2 in front doors)	S	S	S	S
Day / night rear view mirror	S	S	S	S
Reclining seats (front & rear)	S	S	S	S
Height-adjustable driver's seat	S	S	S	S
Split-folding rear seatbacks (60/40)	S	S	S	S
Front/rear head restraints (2/3)	S	S	S	S
Front seat centre armrest with storage compartment	S	S	S	S
Front & rear door armrests	S	S	S	S
4 assist grips (2 front / 2 rear)	S	S	S	S
Front & rear door pockets	S	S	S	S
Front seatback pockets	S	S	S	S
Storage pockets (cargo area & tailgate)	S	S	S	S
Overhead console	S	S	N/A	N/A
Accessory power outlets (console x 2, cargo area x 1)	S	S	S	S
Cargo area cover	S	S	S	S
Cargo area convenience hooks (4)	S	S	S	S
Coat hooks (2)	S	S	S	S
Driver's footrest	S	S	S	S
EXTERIOR				
Halogen headlights (multi-reflector and projector)	S	S	S	S
Automatic headlights (on/off)	S	S	S	S
Privacy glass	N/A	S	S	S
Power mirrors	S	S (Heated)	S (Heated)	S (Heated)
Variable intermittent wipers	S	S	S	S
Rear window wiper/washer with fixed intermittent	S	S	S	S
Rear window defroster with timer	S	S	S	S
Remote fuel door release	S	S	S	S
Body-coloured bumpers/mirrors/door handles	S	S	S	S
Fog lamps	N/A	S	S	S
Roof rails	N/A	S	S	S
Hard spare tire case Half case	S	N/A	N/A	N/A
Full case with "Suzuki" logo	N/A	S	S	S
Aluminum alloy wheels	N/A	S (16 inch)	S (17 inch)	S (17 inch)
SAFETY AND SECURITY				
Engine block heater	S	S	S	S
Full-Time 4WD (4H)	S	N/A	N/A	N/A
4 Mode 4WD (4H, 4H LOCK, 4L LOCK, Neutral)	N/A	S	S	S
Centre Differential LSD (Limited Slip Differential)	S	S	S	S
Dual front airbags	S	S	S	S
Front seat-mounted side airbags	S	S	S	S
Side-curtain airbags	S	S	S	S
ABS with EBD (Electronic Brake-Force Distribution)	S	S	S	S
Centre high-mounted rear stop lamp	S	S	S	S
Brake assist	S	S	S	S
ESP* (Electronic Stability Program) with traction control	S	S	S	S
Engine immobilizer	S	S	S	S
3-point ELR seat belts (all 5 seating positions)	S	S	S	S
Height-adjustable front seat belt anchors	S	S	S	S
ISO-FIX child safety seat provisions (2 rear)	S	S	S	S
Childseat tether anchorage (3 rear)	S	S	S	S
Child-proof rear door locks	S	S	S	S
Daytime running lights	S	S	S	S
Side impact beams	S	S	S	S

*ESP is a registered trademark of Daimler-Chrysler AG

**HomeLink and the HomeLink House are registered trademarks of Johnson Controls

S: Standard N/A: Not Available

SPECIFICATIONS

EXTERIOR DIMENSIONS

Overall length	mm (inch)	4,470 (176.0)
Overall width	mm (inch)	1,810 (71.3)
Overall height	mm (inch)	1,695 (66.7)
Wheelbase	mm (inch)	2,640 (103.9)
Tread	mm (inch)	1,540 (60.6)
	mm (inch)	1,560 (61.4)
Ground clearance	mm (inch)	200 (7.9)
Minimum turning radius	m (ft)	5.5 (18.0)
Seating capacity	persons	5

INTERIOR DIMENSIONS

Head Room	Front	mm (inch)	1,016 (40.0)
	Front w/ sunroof	mm (inch)	971 (38.2)
	Rear	mm (inch)	970 (38.2)
Leg Room	Front	mm (inch)	1,050 (41.3)
	Rear	mm (inch)	945 (37.2)
Shoulder Room	Front	mm (inch)	1,413 (56.3)
	Rear	mm (inch)	1,394 (54.9)
Hip Room	Front	mm (inch)	1,409 (55.5)
	Rear	mm (inch)	1,119 (44.0)
Cargo Length	Behind 2nd Seat	mm (inch)	719 (28.3)
	2nd Seat Folded	mm (inch)	1,655 (65.2)
Cargo Height		mm (inch)	1,065 (41.9)
Cargo Width		mm (inch)	1,014 (39.9)
Luggage Capacity		litres (cubic feet)	758 (26.7)
Cargo Volume Index			
	Behind 2nd Seat	m ³ (ft. ³)	0.69 (24.4)
	w/sunroof	m ³ (ft. ³)	0.68 (23.8)
	2nd Seat Folded	m ³ (ft. ³)	1.97 (68.9)
	w/sunroof	m ³ (ft. ³)	1.93 (67.3)
Interior Volume		litres (ft. ³)	3,550 (125.4)
	w/sunroof	litres (ft. ³)	3,480 (122.9)

ENGINE

Number of cylinders	6	
Number of valves	24	
Piston displacement	cc	2,736
Bore x stroke	mm (inch)	88 x 75 (3.46 x 2.95)
Compression ratio	9.5 : 1	
Maximum output	hp @ rpm	185 @ 6,000
Maximum torque	lb.ft. @ rpm	184 @ 4,500
Fuel distribution	Multi Point Injection	

TRANSMISSION

Type	5MT	5AT
Gear ratio	1st	4.550
	2nd	2.357
	3rd	1.695
	4th	1.242
	5th	1.000
	Reverse	4.436
Final gear ratio	3.583	4.300
Transfer gear ratio	High	1.000
	Low	1.970

CHASSIS

Steering	Power, Rack & Pinion	
Brakes	Front	Ventilated disc
	Rear	Drum
Suspension	Front	Independent MacPherson Strut
	Rear	Independent Multi-link
Tires	JA, JX	P225/70R16
	JLX, JLX Leather	P225/65R17

WEIGHTS

Curb weight (min.)	kg (lbs)	1,625 (3,582)	1,670 (3682)
w/sunroof	kg (lbs)	-	1680 (3704)
Gross vehicle weight	kg (lbs)	2,130 (4,696)	

FUEL CONSUMPTION

Fuel tank capacity	litres	66
Fuel economy City/Highway	5MT	5AT
L/100 km (mpg)	13.0/9.5 (22/30)	12.4/9.3 (23/30)

TOWING CAPACITY

kg (lbs)	1,360 (3,000)
----------	---------------



* NOT AVAILABLE ON JA MODELS

EXTERIOR COLOURS

Cool Beige Metallic*	Black	Beige
Azure Grey Metallic*	Black	Black
Pearl Black Metallic	Black	Beige
Graphite Grey Metallic*	Black	Black
Pearl Red Metallic*	Black	Beige
Silky Silver Metallic	Black	Black
Pearl White Metallic	Black	Beige

INTERIOR COLOURS

CLOTH	LEATHER
Black	Beige
Black	Black
Black	Beige
Black	Black
Black	Beige
Black	Black
Black	Beige

SUZUKI SECURE ADVANTAGE PROTECTION We are proud to deliver each 2008 Suzuki with Suzuki Secure Advantage Protection warranty coverage at no additional cost. The Suzuki Secure Advantage Protection plan features a 5-year/100,000 kilometre Powertrain Warranty, a 3-year/60,000 kilometre New Vehicle Limited Warranty and a 5-year unlimited mileage Anti-Perforation warranty. All warranties are zero deductible and fully transferable at no cost. **ROADSIDE ASSISTANCE** For added peace of mind, SUZUKI SECURE ADVANTAGE PROTECTION includes numerous roadside assistance benefits. Wherever you may be in Canada or the continental United States, should you require roadside service for towing due to collision or mechanical problems, battery boost, if you have run out of fuel, or locked your keys in your car, have a flat tire or require winching or extrication to get you back on the road, Suzuki Secure Advantage Roadside Assistance has you covered. At no additional cost to you. Just call our toll-free number and a bilingual Suzuki Secure Advantage Roadside Assistance counsellor will help you on your way. 24 hours/day, 365 days/year. This plan also features Trip Interruption benefits so if you are more than 100 kilometres from home and your vehicle is undrivable for any reason, you can make alternate arrangements and request reimbursement for expenses incurred within 3 days and up to \$300. Suzuki Secure Advantage Roadside Assistance covers your 2008 Suzuki for 5 years with no mileage limitations. **SUZUKI PROTECTION PLAN** Should you plan to drive your new Suzuki farther or longer than the coverage provided by the Suzuki New Vehicle Limited Warranty, the Suzuki Protection Plan will be of special interest to you. Suzuki Protection Plan provides you with the ability to enhance and extend coverage already provided by the new vehicle limited warranty. Suzuki Protection Plan offers you affordable, cost-effective peace of mind in the event of unexpected mechanical failure or other roadside emergencies for up to 7 years or 140,000 kilometres. Suzuki Protection Plan offers a vast choice of coverage levels, terms and deductibles allowing you to select the specific plan best suited to your ownership requirements. Ask your Suzuki dealer for a complete explanation of the benefits, coverages, limitations and exclusions of Suzuki Protection Plan, to better assist you in choosing the coverage that best suits your needs.

Suzuki, XL7, Grand Vitara, SX4 and Swift are registered trademarks of Suzuki Motor Corporation of Japan. **DRIVE RESPONSIBLY. BUCKLE UP FOR SAFETY—DON'T DRINK AND DRIVE.** Specifications and equipment based on information available at time of printing and subject to change without notice, and may differ in each sales area. Some vehicles shown with optional equipment. Colours shown may vary from actual colours. For more details on 2008 options, accessories and specifications, contact your local Suzuki dealer. To avoid injury from an inflating airbag always place child under twelve years old and under in the rear seat. Always move both driver and passenger seats as far back from airbags as practical; never transport a child in a rear-facing seat in the front seat. Always use the seat belts and buckle up properly. Fuel economy estimates are determined by using Transport Canada approved testing methods.

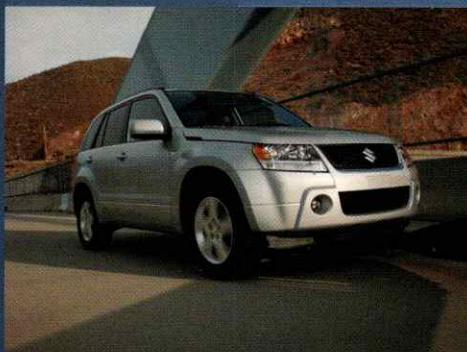
WWW.SUZUKI.CA



SX4 SEDAN



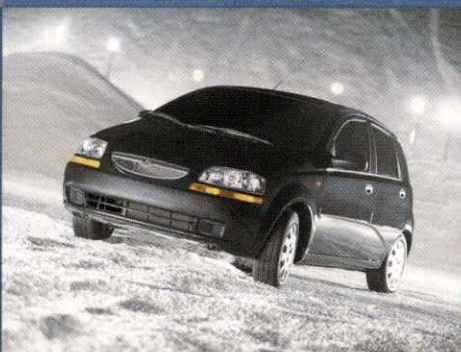
SX4 HATCHBACK



GRAND VITARA



XL7



SWIFT+



Way of Life!