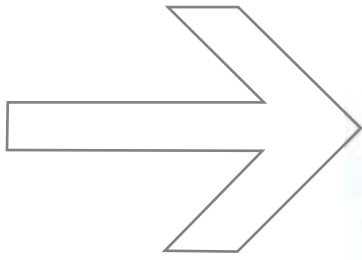


ZEN





Zen - No. 1, Always

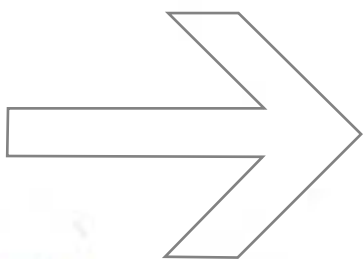
The Zen is born to lead. Distinct European styling. Leading-edge performance. Brilliant dynamics. And a range of matchless features... it's all the makings of a winner. Undoubtedly, it's India's favourite premium compact car. Drive it. And get ready to stay ahead at every turn of life.



No. 1 in Manoeuvrability

Winning is all about total confidence and total control, in every situation. The highly speed-sensitive Electronic Power Steering of the Zen promises just that. It ensures effortless manoeuvrability and superb grip on the road while you drive. Helping you stay ahead in every game, always.

ZEN

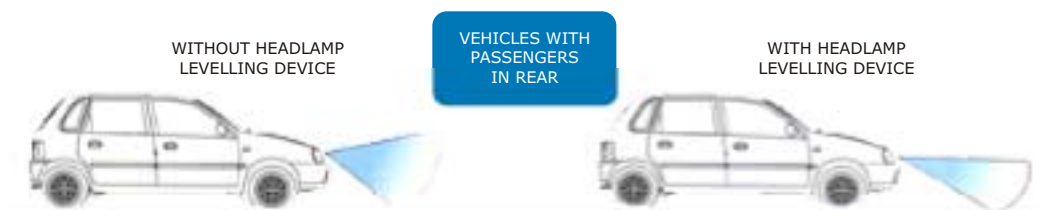


No. 1 in Total Customer Satisfaction

*The Zen is India's Best Premium Compact Car. * Customers across the country have, once again, unanimously declared the Zen as the winner in its class. The results of the TNS Automotive TCS study 2004 are a reflection of the fact that the Zen owner are much more satisfied with their car than the owners of other brands in the class.

Headlamp Levelling

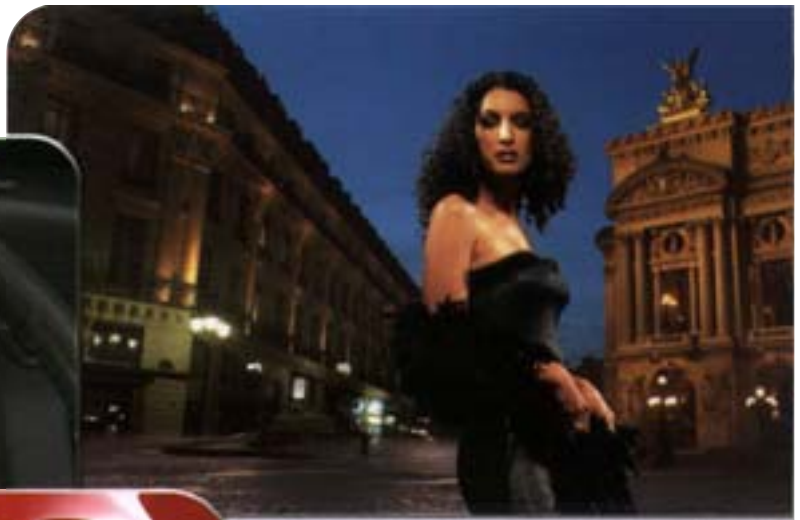
Get more driving confidence. Now, you can adjust the headlamp beam in four different levels as per the load in the car. The headlamp levelling device provides optimum visibility and reduced glare onto oncoming vehicles.





Sporty Meter Cluster

Designed to add more joy to your driving pleasure.



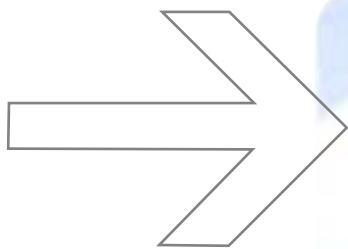
Smart Steering

Enjoy excellent manoeuvrability and total control on every road.



No.1 Style

It's got the style and presence, with every inch exuding luxury & class. Well-sculpted contours. Sleek lines. And aggressive stance. The Zen makes an unmistakably international style statement.



No.1 Performance

Dynamic. Refined. And capable. The Zen's all-aluminium Hypertech engine with 32-bit Engine Control Microprocessor** delivers excellent performance with amazing efficiency. Its highest power-to-weight ratio of 78.4 bhp/tonne ensures that you leap from 0 to 60 kmph in just 5.68 seconds[#].

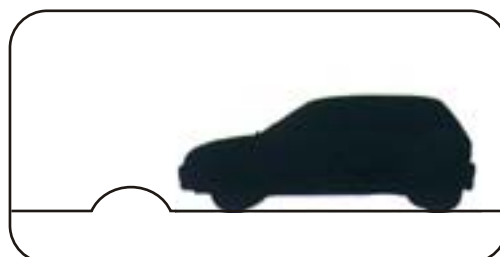


Technology To Make You No.1

Unbeatable technology is at the heart of the No.1 performer.

The Zen offers a technology and performance package that's unmatched by any other car on Indian roads.

The new Zen's underfloor has been re-designed to ensure it smoothly crosses all speed breakers.



**In Bharat Stage III version

#As per Overdrive May 2002 issue.

EQUIPMENT

SAFETY

PETROL (Bharat Stage II & Bharat Stage III)

	LX	LXi	VXi
Body reinforcements	o	o	o
Engine sub-frame	o	o	o
Laminated front windscreen	o	o	o
Rear windscreen wiper and washer			o
Rear windscreen demister			o
Child safety rear door locks	o	o	o
Collapsible steering column	o	o	o
Front fog lamps			o
Rear fog lamps			o
Clear headlamps	o	o	o
Clear tail lamps	o	o	o
Rear high mount stop lamp	o	o	o
Front and rear 3-point ELR seat belts	o	o	o
Central locking			o
Dual side impact beams	o	o	o
Booster assisted dual circuit brakes	o	o	o
Front Disc Brake Mechanism	o	o	o
Radial Tyres	o	o	o
Electronics Power Steering		o	o
Headlamp Levelling - 4 steps	o	o	o

COMFORT

PETROL (Bharat Stage II & Bharat Stage III)

	LX	LXi	VXi
Transmission		Manual 5 Forward Synchronesh, 1 Reverse	
Front Suspension		McPherson strut	
Rear suspension		3 link rigid axle with trailing arm, coil springs and gas filled shock absorbers	
CFC free Air conditioner and Heater	o	o	o
Front Power windows		o	o
Improved lumbar & thigh support seating	o	o	o
Tinted glasses	o	o	o

CONVENIENCE

PETROL (Bharat Stage II & Bharat Stage III)

	LX	LXi	VXi
Centre console with cup holder		o	o
Co-driver seat back pocket		o	o
Prismatic day-night internal rear view mirror			o
Internally adjustable outside rear view mirrors (L&R)			o
Remote fuel lid opener	o	o	o
Remote trunk lid opener	o	o	o
Rear Parcel tray	o	o	o

STYLE

PETROL (Bharat Stage II & Bharat Stage III)

	LX	LXi	VXi
Body coloured bumpers	o	o	o
Body side mouldings			o
Fabric upholstery	o	o	o
Moulded door trims	o	o	
Moulded door trims with fabric			o
Steering wheel with leather cover			o
Moulded roof lining	o	o	o
Dial colour instrument cluster	o	o	o
Full wheel cover			o
Gear knob with metal finish		o	o
Body coloured garnish on back door	o	o	o

SPECIFICATIONS

CAPACITIES

PETROL (Bharat Stage II & Bharat Stage III)

	LX	LXi	VXi
Seating Persons			5
Fuel in litres			35
Engine in cc			993
Unladen weight in kgs.			765
Laden weight in kgs			1190
Tyres	145 / 80 R 12 (Front & Rear)		

PETROL Bharat Stage II

	LX	LXi	VXi
All aluminium engine	o	o	o
16 valve, 4 cylinder inline engine	o	o	o
16 bit ECM	o	o	o
Multipoint fuel injection	o	o	o
Maximum engine output in bhp/rpm			60@6000
Maximum engine torque in kgm/rpm			8@4500
Compression ratio			9.4:1

PETROL Bharat Stage III

	LX	LXi	VXi
All aluminium engine	o	o	o
16 valve, 4 cylinder inline engine	o	o	o
32 bit ECM	o	o	o
Multipoint fuel injection	o	o	o
Maximum engine output in bhp / rpm			60@6200
Maximum engine torque in kgm/rpm			8@4500
Compression ratio			9.4:1

DIMENSIONS

Overall length	3535mm
Overall width	1495mm
Overall height	1405mm
Wheelbase	2335mm
Ground clearance	165mm



Solid Bright Red



Metallic Silky Silver



Metallic Pearl Silver



Metallic Beam Blue



Metallic Midnight Black



Solid Superior White

Accessories shown in the picture are not part of original equipment.

Colours shown may vary from actual body colours due to printing on paper.

DEALER STAMP

There are 317 sales outlets, 1970 service centres across 1046 cities as on 28.02.05.



Ask anything about Maruti, Anytime, call 1600 11 1515 (Toll Free) Or 9811801515

(Service available in Bangalore, Chandigarh, Chennai, Delhi, Gurgaon, Hyderabad, Kolkata, Lucknow, Mumbai and Pune.)



Anytime MARUTI

Maruti Udyog Limited,
11th Floor, Jeevan Prakash,
25, Kasturba Gandhi Marg,
New Delhi-110 001, India.
Tel.: 23316831 Fax: 23713575.



Maruti Udyog Limited reserves the right to change without notice, prices, colours, equipment specifications and models and also to discontinue models. Accessories shown in the pictures may not be part of the standard equipment. For variant specific features refer to equipment list.