



# **SUZUKI** ***IGNIS***

---





# confidence ignis

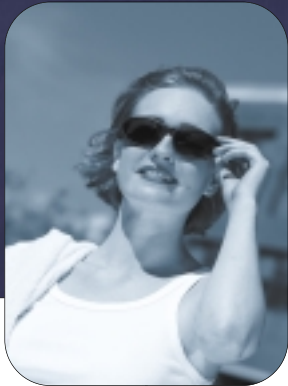
The new Suzuki Ignis. It's a compact car, right? But wait a second. It looks different. Taller. Chunkier. With a bit of a swagger about it. Looks that say, here's a car that can look after itself. And you. Compact it may be, but inside, you'll find plenty of load space - and all kinds of neat storage ideas. And because there's room for five people, you won't have to keep the performance and comfort to yourself. Of course, they'll probably be consumed with envy. It's a risk. But with this car, it's the only one you'll ever have to take.

The new Suzuki Ignis, you can be confident in it.





# 3-door



Cup holders



Tinted glass



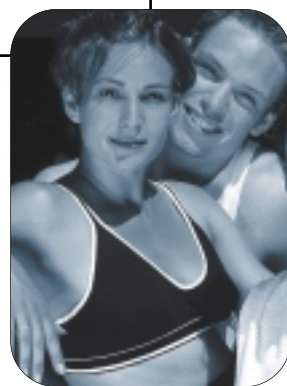
With its high driving position and superb all-round visibility, nothing could be easier - or more fun - than driving the Ignis around town. Apart from parking it, that is. As you ease casually into that space the driver in the hatchback has just given up on, don't worry if you find yourself wearing a smug, satisfied smile. You'll get used to it.



# 5-door



With the widest boot space in its class, the Ignis can handle the most extravagant shopping expedition (and no questions asked). While five doors makes packing in a few friends or that insane impulse buy a whole lot easier. It's as versatile and life-enhancing as a platinum credit card - with no limits.



Front fog lights  
(5dr)



5 spoke alloy wheels  
(5dr)







# space

The interior is designed to put you in control. From control comes confidence. Which is what makes driving fun. The wide, spacious interior gives you room to think, relax, and get away from the rough-and-tumble of the city streets. We've placed the switches to fall naturally to hand and made the instruments clear and easy to read, so you're always informed and in command.



With a turning circle of just 9.8m, you'll never find yourself stuck somewhere you can't get out of - and those trickier manoeuvres are even easier with electronic power steering across the range.



4 speed air flow control



Front electric windows



3 spoke urethane steering wheel





# flexibility



*Split folding rear seats fold flat easily for flexible storage*



Open the tailgate. First thing you notice is the width - wider than any other car in its class. You don't lose any space to intruding wheel-arches and no sill between the boot and the bumper means no awkward lifting. Look closer, and under the boot floor you'll find a removable tray with 17 litres of storage space. Simple, but amazingly useful. The rear seats split 50:50, giving a variety of loading arrangements: fold both flat, and you open up 419 litres of cargo space.

But because you're more likely to be carrying a mobile phone than a fridge when you're out and about, we've included lots of handy storage spaces for those small but essential items. The GL model also offers those little extras, for example, trays under the front passenger seat and the dashboard, door and front-passenger's seatback pockets, a good-sized glove box and cup-holders for those up front.





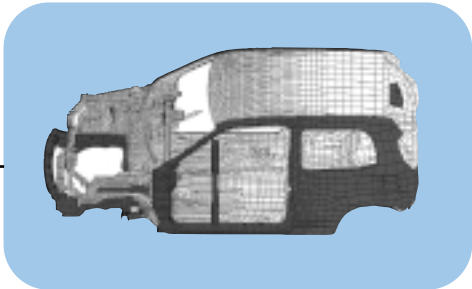
# safety and security

OK, so we've challenged a few conventions with the design. But when it comes to safety, we stick rigidly to the rules. Large front disc brakes bring you swiftly and safely to a standstill. Driver and front-seat passenger both have airbags, while side-impact protection beams, a strengthened cabin and extensive crumple zones give complete all-round safety if the worst should happen.

Sure, looks are important. But it's what's inside that really matters to us.



High mounted stop light



Strong lightweight body shell



Driver and front passenger airbags

**12** year anti-perforation warranty



Powerful front disc brakes

Side impact protection beams

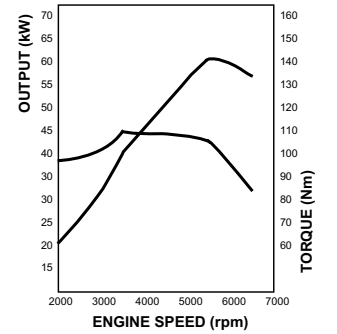
Halogen headlamps



Integral immobiliser/ignition/door key

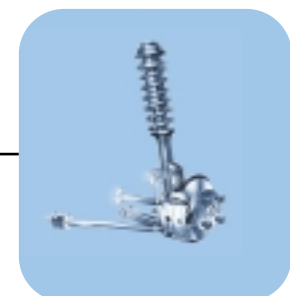


# technology



So you're running late. At this moment, you're not thinking about the inner workings of the 1.3-litre, 16-valve, all-aluminium DOHC engine with multi-point fuel injection system. You're just glad that when you put your foot down, it responds. Instantly. Powerfully. Smoothly, too, thanks to its consistent torque at low and mid-range engine speeds. The Ignis is available with either five-speed manual or four-speed automatic transmission (GL model only) to suit your driving style.

And when you take a short-cut down that side-street with more craters than the surface of Mars, you'll be glad the Ignis has a class-leading 165 mm of ground clearance, and MacPherson-strut front suspension to smooth out the ride.



*Front MacPherson struts for a confident and comfortable ride*







Instrument panel cover



Manual transmission, wood gear shift knob



Front under spoiler, shown with skid plate



Chrome rear hatch moulding



Fog lamp kit



Carpet mats



Rear luggage tray



Rear upper spoiler



Multi roof rack



Side body moulding



Alloy wheel



Bumper corner protection kit



# accessories

Let's be honest, the looks of the Ignis don't leave much room for improvement. But because we know you'll want to put your own individual stamp on it, we've created a range of accessories to give your Ignis that all-important touch of distinction. After all, why settle for anything less than perfection?

# colours



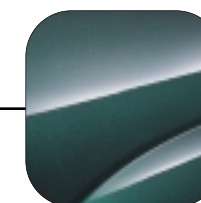
Naples Yellow



Cassis Red Pearl



Cyprus Blue Metallic



Grove Green Pearl Metallic



Silky Silver Metallic



Bluish Black Pearl





specification

MODEL		1.3 GA/GL 3 DR		1.3 GL 5-DR	
TRANSMISSION		5M/T	4A/T**	5M/T	4A/T**
DIMENSIONS					
Overall length	mm (in)	3,615 (142.3)			
Overall width	mm (in)	1,595 (62.8)			
Overall height	mm (in)	1,540 (60.6)		1585 (62.4)	
Wheelbase	mm (in)	2,360 (92.9)			
Track	front	mm (in)	1,405 (55.3)		
	rear	mm (in)	1,385 (54.5)		
Ground clearance	mm (in)	165 (6.5)			
Turning radius	m (ft)	4.9 (16.1)			
Turning circle	m (ft)	9.8 (32.2)			
WEIGHTS					
Kerb weight*	kg (lbs)	890.0 (1,962.0)	910.0 (2,006.2)	920.0 (2028.2)	940.0 (2072.3)
Gross vehicle weight	kg (lbs)	1,430 (3,152.6)			
Braked towing weight	kg (lbs)	800 (1763.7)			
Un-braked towing weight	kg (lbs)	350 (771.6)			
Gross train weight	kg (lbs)	2230 (4916.3)			
ENGINE					
Type		M13A - DOHC 4 cylinder 4-stroke			
Fuel distribution		Multi-point fuel injection			
Piston displacement	cc (cu.in)	1,328 (81.0)			
Bore x stroke	mm (in)	78.0 x 69.5 (3.07 x 2.73)			
Compression ratio		9.5 ± 0.2:1			
Maximum power	kW (bhp/PS)@rpm	61 (81.8/82.9)@5,500			
Maximum torque	Nm(lb.ft/kg-m)@rpm	110 (81.2/11.2)@3,500			
CHASSIS					
Steering		Power assisted rack and pinion			
Suspension	Front	MacPherson strut and coil springs			
	Rear	Trailing arms on a rigid axle with a panhard rod, coil springs and dampers			
Brakes		Servo assisted, diagonally linked ventilated front discs and rear drums			
Tyres		165/70R14 on 4.5J x 14			
TRANSMISSION					
Type		5-speed all synchromesh	4-speed electronic control	5-speed all synchromesh	4-speed electronic control
Gear ratio	1st	3.416	2.962	3.416	2.962
	2nd	1.904	1.515	1.904	1.515
	3rd	1.280	1.000	1.280	1.000
	4th	0.966	0.737	0.966	0.737
	5th	0.815	-	0.815	-
	Reverse	3.272	2.809	3.272	2.809
	Final gear ratio	4.105	4.328	4.105	4.328
FUEL CONSUMPTION 80/1268 *99/100/EEC					
Urban cycle	l/100 km (mpg)	8.5 (33.2)	9.5 (29.7)	8.5 (33.2)	9.5 (29.7)
Extra urban	l/100 km (mpg)	5.2 (54.3)	6.0 (47.1)	5.2 (54.3)	6.0 (47.1)
Combined	l/100 km (mpg)	6.4 (44.1)	7.3 (38.7)	6.4 (44.1)	7.3 (38.7)
CO <sub>2</sub> emissions	g/km	150	170	150	170
CAPACITY					
Fuel tank	litre (Imp. gallon)	41 (9.0)			
Seating capacity		5			
* Weight will vary according to optional equipment fitted					
** Automatic available on GL only at extra cost					

dimensions



equipment

MODEL	1.3 GA 3-DR	1.3 GL 3-DR	1.3 GL 5-DR
COMFORT			
Power assisted steering	•	•	•
Front electric windows	-	•	•
Central door locking	-	•	•
Electric door mirrors	-	•	•
4 speed air flow control	•	•	•
Radio/cassette	•	•	•
Tinted glass	•	•	•
INSTRUMENT PANEL			
Rev. counter and trip meter	•	•	•
Digital clock	•	•	•
Information display	•	•	•
Lights on warning	•	•	•
Cigarette lighter	•	•	•
3 spoke urethane steering wheel	•	•	•
INTERIOR			
Interior light (3 position)	•	•	•
Boot light (3 position)	•	•	•
Sun visor (both sides)	•	•	•
Vanity mirror (both sides)	-	•	•
Day/night rear view mirror	-	•	•
Internal fuel flap release	•	•	•
Cloth seat fabric	Standard	Luxury	Luxury
Floor and luggage carpet	•	•	•
Reclining and sliding front seats	•	•	•
Reclining/fold forward rear seats	•	•	•
Lumber support (Driver's side)	-	•	•
Walk-in sliding seat system passenger side	-	•	-
Detachable front/rear seat head restraints	Front	•	•
Separately folding 50/50 rear seat backs	•	•	•
Centre console with storage	•	•	•
Cup holders x 2	•	•	•
Front door arm rests	•	•	•
Door pockets	•	•	•
Seat back pockets (both sides)	-	•	•
Rear quarter trim with pocket	•	•	-
Cloth accent door trim	-	•	•
Passenger grab handles-assist grips	1	1	3
Glove box	•	•	•
Luggage cover	•	•	•
Luggage room undertray	•	•	•
Passenger front seat undertray	-	•	•
EXTERIOR			
Metallic paint	†	†	†
Halogen headlights	•	•	•
Front fog lights	-	-	•
2 speed intermittent windscreen wipe	•	•	•
Rear wash/wipe	•	•	•
Heated rear window	•	•	•
Roof rails	-	-	•
Towing hook	•	•	•
Wheel centre caps	•	-	-
Full wheel covers	-	•	-
5 spoke alloy wheels	-	-	•
Colour co-ordinated bumpers	•	•	•
Folding exterior door mirrors	•	•	•
Tailgate handle	•	•	•
Radio antenna	•	•	•
SAFETY & SECURITY			
Immobiliser	•	•	•
Driver airbag	•	•	•
Passenger airbag	•	•	•
High mounted stop lamp	•	•	•
Headlamp levelling device	•	•	•
Height adjustable front seatbelt anchorages	•	•	•
Front seatbelt pre-tensioners	•	•	•
Child proof rear door locks	-	-	•
Collapsible steering column	•	•	•
Steering lock	•	•	•
Side impact protection beams	•	•	•
Visible V.I.N	•	•	•

- Standard
- Not available
- † Metallic/Pearl paint (available at extra cost)

the world of suzuki

High quality, superb all round performance, that's the value of Suzuki's experience.

Warranty

Suzuki Shield - A 3 year or 60,000 mile new vehicle warranty, whichever comes first and a 6/12\* year perforation warranty.

Assistance

Suzuki Assistance - 24 hour roadside assistance, recovery and many other associated services for 36 months.



Finance

A wide range of tailor made finance plans are available from Suzuki Financial Services Limited.

Insurance

A specially created insurance programme for Suzuki owners, offering competitive rates and many valuable benefits.

Exclusive Club

The Suzuki Exclusive Club will provide you with a quality of aftercare that is second to none. Membership of this programme is free for all Suzuki owners - visit your Suzuki Exclusive Dealer and complete an application form.

\* 12 year perforation warranty on Liana, Ignis and Wagon R+ models.

Suzuki - a manufacturer renowned for producing some of the world's most successful products, including popular 4x4's, unique passenger cars, high performance motorcycles, stylish scooters and powerful outboard motors.

Every new Suzuki benefits from over 70 years' manufacturing experience and expertise and the very latest advances in technology and performance.



Experience Suzuki on line  
[www.suzuki.co.uk](http://www.suzuki.co.uk)



YOUR LOCAL SUZUKI DEALER

Suzuki GB PLC, 46-62 Gatwick Road, Crawley, West Sussex RH10 9XF  
Suzuki Customer Services, Freephone 0500 011959.

(Calls may be recorded or monitored)

Specifications shown have been achieved by production models under standard operating conditions. Data is intended to describe vehicles and their performance fairly, but may not apply to every vehicle. Colours, specifications and equipment may vary without notice. All details correct at time of going to press: January 2002 (ref: 5255)



THE VALUE OF EXPERIENCE