

IGNIS



 **SUZUKI**



Practically perfect

The Suzuki Ignis is a real car for real people. Some would say it's perfectly practical. We'd say it's practically perfect. Perfectly tuned to be easy to drive, breezy to park and simple to own. You'll feel right at home in the Ignis, the perfect super compact SUV.



— LTD ONLY —



White Pearl (ZVR)



Premium Silver Metallic (ZNC)



Speedy Blue Metallic (ZWG)



Flame Orange Pearl (ZWD)



Tough Khaki Pearl Metallic (ZZL)



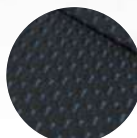
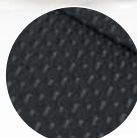
Burning Red Pearl Metallic (ZWP)



Caravan Ivory Pearl Metallic (ZYL)



Silver interior accents (ZWD, ZZL, ZWP, ZYL)



Blue interior accents (ZWG, ZVR, ZNC, ZMW, ZMV)

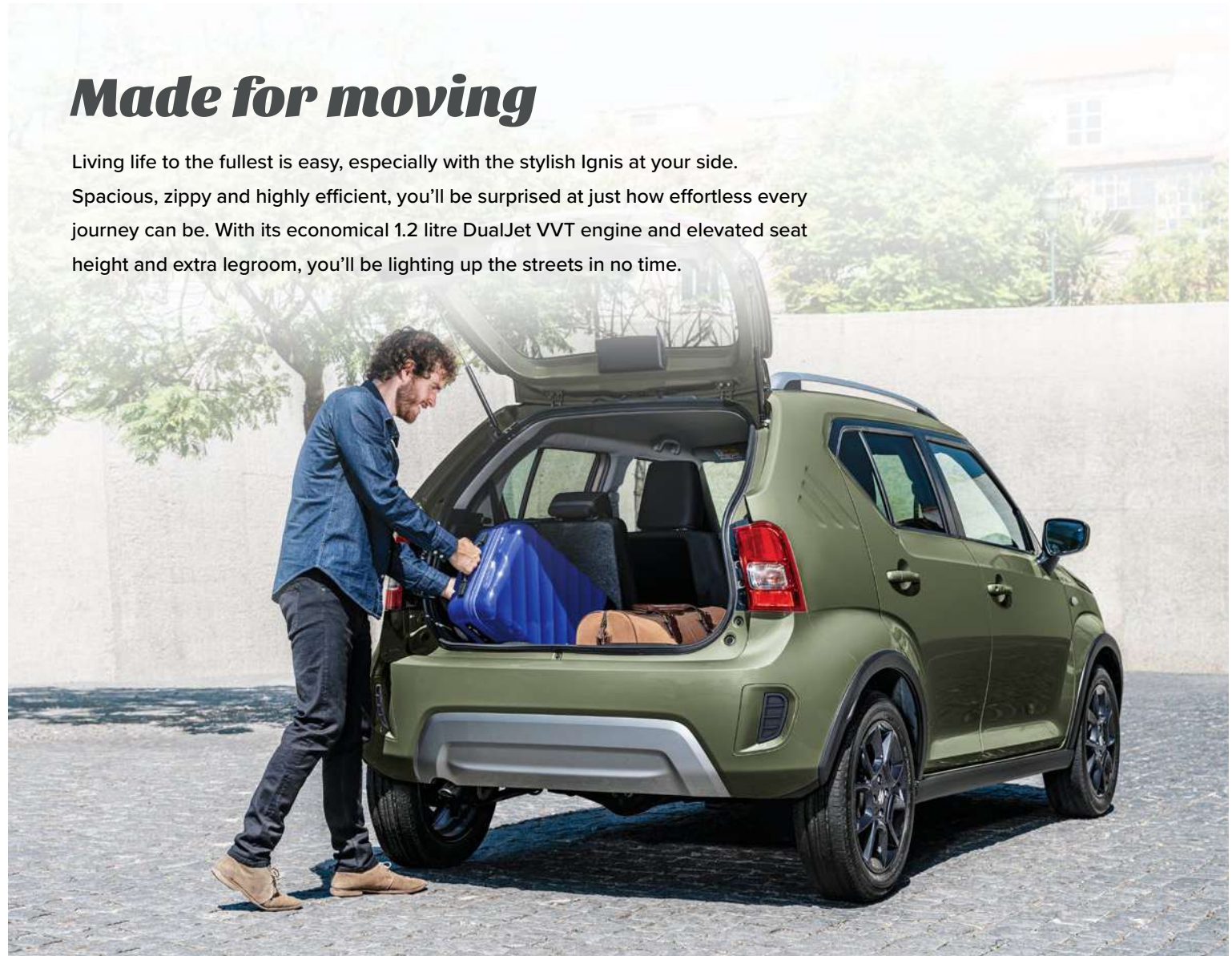
Easy as 1-2-3

Some cars can feel complicated. Not the no-fuss Ignis. Simply get comfortable, start the engine, connect your phone and off you go. With no instruction manual needed, you'll be on your way before you know it.



Made for moving

Living life to the fullest is easy, especially with the stylish Ignis at your side. Spacious, zippy and highly efficient, you'll be surprised at just how effortless every journey can be. With its economical 1.2 litre DualJet VVT engine and elevated seat height and extra legroom, you'll be lighting up the streets in no time.



CLIMATE CONTROL AIR CONDITIONING

Whatever the season, whatever the conditions, the digital climate control air conditioning in the LTD makes it a breeze to adjust your comfort level. The GLX is equipped with a manual air conditioner that's also simple and easy to use.



KEYLESS ENTRY AND START

Save fumbling for your keys when you unlock the Ignis by pressing a button on the door handle, and starting the car while the keys are safely in your pocket or bag (LTD).



CRUISE CONTROL AND SPEED LIMITER

Cruise control maintains a set speed reducing driver fatigue over long distances. The speed limiter function allows you to set a maximum speed for safe driving.



COMFORT BEHIND THE WHEEL

The higher ride height makes it easier to get in and out of the Ignis. While the elevated seating position, provides better visibility for both the driver and passengers. Tilt the steering column and adjust the driver's seat height for optimal driving comfort.



VERSATILE LUGGAGE SPACE

Grab the gear and go as the Ignis boasts a flexible luggage space volume of 505-516L when the rear seats are folded down.



EASY SLIDING REAR SEATS

The left and right rear seats slide forward and backward separately from each other, making it possible to adjust for legroom, luggage and all sorts of situations (LTD).



TOUCHSCREEN WITH ANDROID AUTO™ AND APPLE CARPLAY

The multimedia infotainment system features a high definition, touchscreen with smartphone connectivity through Bluetooth® and USB connection to Android Auto™ and Apple CarPlay. Connect your compatible smartphone to access navigation maps, stream music and podcasts, make handsfree phone calls and voice activated texts, and use other driver safe apps.



REVERSE CAMERA

Cleverly integrated, the built-in reverse camera helps you park and reverse safely without having to twist around in your seat.



CONVENIENT STORAGE SPACE

Whether you are off on a weekend getaway or running around everyday, there's plenty of places within the Ignis to store your essentials.



DUALJET ENGINE

The 1.2L VVT engine is optimised for outstanding fuel economy and smooth performance for an effortless drive.

POWER: 66 kW @ 6,000 rpm
TORQUE: 120 Nm @ 4,400 rpm
FUEL: 4.7-4.9L/100 km combined NEDC
CO2: 107-114 g/km combined NEDC
TRANSMISSION: 5-speed manual or CVT Auto



NIMBLE MANOEUVRABILITY

With a minimum turning radius of 4.7m, the Ignis is easy to drive on narrow city roads and in and out of parking spots. Its high ground clearance also provides peace of mind when driving over uneven or bumpy roads.



ESP
Electronic Stability Programme (ESP) helps you stay in control when you are cornering by counteracting understeer and oversteer in the Ignis. It also improves traction and reduces skidding whatever the road surface conditions.



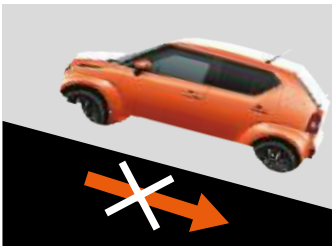
GUIDE ME LIGHTS
The Ignis's Guide Me headlamps continue to illuminate the road for a short while after you get out. When the doors are unlocked with the remote, the headlamps turn on to lead you the vehicle (LTD).



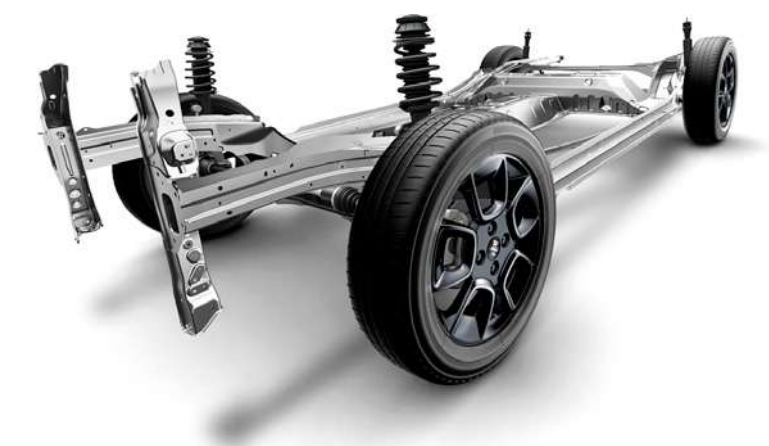
SIX SRS AIRBAGS
The Ignis is equipped with an advanced SRS airbag system which includes front and side airbags for the driver and front passenger, as well as side curtain airbags for the rear passengers.



ADVANCED LIGHTING SYSTEM
The distinctive LED projector headlamps in the Ignis LTD are auto light-sensing and levelling. Just set and the Ignis will do the rest. While the integrated LED daytime running lamps and fog lamps in the lower bumper help maintain your visibility on the road.



HILL HOLD CONTROL
Hill starts are easy in the Ignis as the brake is automatically applied until you move forward, preventing you from rolling backwards (CVT).



LIGHTWEIGHT AND STRONG PLATFORM
The Ignis' HEARTECT platform features a high-rigidity frame with a smooth curving shape that effectively disperses impact energy in a collision. Fewer joints and the use of high-tensile steel dramatically reduces the vehicle weight, improving the compact SUV's performance and fuel consumption.

Specifications

| INFOTAINMENT | | GLX | LTD |
|----------------------------------|--|-----|-----|
| Touchscreen infotainment | | ● | ● |
| Four speaker tuner/SD | | ● | - |
| Six speaker tuner/SD | | - | ● |
| Bluetooth® | | ● | ● |
| USB input | | ● | ● |
| Apple CarPlay® and Android Auto™ | | ● | ● |
| Smartphone connected navigation | | ● | ● |

| INSTRUMENT PANEL | | | |
|---|--|-----|---|
| Tachometer | | ● | ● |
| Information display | Digital clock | ● | ● |
| | Outside temperature gauge | ● | ● |
| | Fuel consumption gauge (instant, average, range) | ● | ● |
| | Gear position indicator | CVT | ● |
| Lights-on and key reminder | | ● | ● |
| Door ajar warning indicator | | ● | ● |
| Seatbelt reminder for all seating positions | | ● | ● |
| Fuel warning indicator | | ● | ● |

| INTERIOR | | | |
|---|---|---|---|
| Air conditioning | Manual with pollen filter | ● | - |
| | Climate control with pollen filter | - | ● |
| Entry and start | Remote with hazard answer-back | ● | ● |
| | Keyless entry and push-button start | - | ● |
| Steering wheel | Leather covered | ● | ● |
| | Cruise, speed limiter, phone and audio controls | ● | ● |
| | Tilt adjustable | ● | ● |
| Driver's side seat height adjuster | | ● | ● |
| 60:40 split-folding rear seats (3 passengers) | | ● | - |
| 50:50 split-folding and sliding rear seats (2 passengers) | | - | ● |
| Adjustable head restraints x 4 | | - | ● |
| Adjustable head restraints x 5 | | ● | - |
| Front passenger assist grip | | ● | ● |
| White instrument panel accent | | - | ● |
| Fabric seat upholstery | | ● | ● |
| 3-position cabin lights (on,off,fade) | | ● | ● |
| Front door storage pockets and armrests | | ● | ● |
| Front seatback pocket on passenger's side | | ● | ● |
| Ticket holder and vanity mirror driver's side | | ● | ● |
| Ticket holder and vanity mirror passenger's side | | - | ● |
| Drink holders x 7 | | ● | ● |
| Removable luggage area cover | | ● | ● |
| Luggage area light | | ● | ● |

| EXTERIOR | | | |
|--|-------------------------------------|---|---|
| Styling | Chrome front grille accent | ● | ● |
| | Front and rear under-garnish | ● | ● |
| | Wheel arch and lower body mouldings | ● | ● |
| | Silver roof rails | ● | ● |
| Privacy glass (rear passenger and hatch) | | - | ● |
| Wheels | 15-inch steel with full covers | ● | - |
| | 16-inch smoked alloys | - | ● |
| Headlamps | Halogen multi-reflector | ● | - |
| | LED projector | - | ● |
| | Auto light-sensing | - | ● |
| | Auto levelling | - | ● |
| | LED daytime running lamps | - | ● |

| | | | |
|--|-------------------------------|---|---|
| Front fog lamps | | ● | ● |
| Electrically adjustable exterior mirrors | | ● | ● |
| Windscreen wipers | 2-speed, intermittent, washer | ● | ● |
| | Rear wiper and washer | ● | ● |
| Rear window demister | | ● | ● |
| Rear centre aerial | | ● | ● |

| SAFETY & SECURITY | | GLX | LTD |
|---|---|-----|-----|
| 5 year extensive warranty programme | | ● | ● |
| 5 year roadside assistance | | ● | ● |
| Cruise control | | ● | ● |
| Speed limiter | | ● | ● |
| Reverse camera | | ● | ● |
| Hill hold control | | CVT | ● |
| Guide Me light | | - | ● |
| Electronic Stability Programme (ESP®) | | ● | ● |
| Brake override system | | ● | ● |
| ABS with EBD and brake assist | | ● | ● |
| Side impact beams | | ● | ● |
| Collapsible steering column | | ● | ● |
| Brake and clutch decoupling mechanism | | ● | ● |
| Dual front SRS airbags | | ● | ● |
| Driver and passenger side SRS airbags | | ● | ● |
| Front and rear curtain SRS airbags | | ● | ● |
| Height adjustable seatbelt anchorages (front) | | - | ● |
| Seatbelts | Front 3-point ELR with pretensioners and forcelimters | ● | ● |
| | Rear 3-point ELR x 2 | - | ● |
| | Rear 3-point ELR x 3 | ● | - |
| ISOFIX child seat anchorages x 2 | | ● | ● |
| Child seat tether anchorages x 2 | | - | ● |
| Child seat tether anchorages x 3 | | ● | - |
| Child-proof rear door locks | | ● | ● |
| Engine immobiliser | | ● | ● |
| Shift lock & key interlock | | CVT | ● |

| DIMENSIONS AND WEIGHTS | | GLX | LTD |
|------------------------|---------|-------|-------|
| Overall length | mm | 3,700 | |
| Overall width | mm | 1,690 | |
| Overall height | mm | 1,595 | |
| Wheelbase | mm | 2,435 | |
| Tread | Front | mm | 1,460 |
| | Rear | mm | 1,470 |
| Ground clearance | mm | 180 | |
| Minimum turning radius | m | 4.7 | |
| Curb weight | GLX MT | kg | 855 |
| | GLX CVT | kg | 875 |
| | LTD CVT | kg | 905 |
| Gross vehicle weight | kg | 1,330 | |

| ENGINE AND TRANSMISSION | | | |
|-------------------------|--------------|----------------------|------------------------|
| Type | | K12C with VVT | |
| Number of cylinders | | 4 | |
| Number of valves | | 16 | |
| Piston displacement | cm³ | 1,242 | |
| Bore x stroke | mm | 73.0×74.2 | |
| Compression ratio | | 12.5:1 | |
| Maximum output | kW | 66 @ 6,000 rpm | |
| Maximum torque | Nm | 120 @ 4,400 rpm | |
| Fuel distribution | | Multipoint injection | |
| Fuel type | | 91RON or greater | |
| Fuel economy* | Combined MT | L/100 km | 4.7 NEDC (5.2 3P-WLTP) |
| | Combined CVT | L/100 km | 4.9 NEDC (5.4 3P-WLTP) |
| CO₂ emissions | Combined 5MT | g/km | 107 NEDC (119 3P-WLTP) |
| | Combined CVT | g/km | 114 NEDC (126 3P-WLTP) |
| Transmission | Manual | 5-Speed | - |
| | Automatic | - | CVT |

| CHASSIS | | | |
|------------|-------|----------------------------------|-----------|
| Steering | | Rack & pinion | |
| Brakes | Front | Ventilated disc | |
| | Rear | Drum leading and trailing | |
| Suspension | Front | MacPherson strut and coil spring | |
| | Rear | Torsion beam and coil spring | |
| Tyres | | 175/65R15 | 175/60R16 |

| CAPACITY | | | |
|-------------------------------|-------------------|--------|-----|
| Seating capacity | Persons | 5 | 4 |
| Luggage capacity (VDA method) | Rear seats folded | Litres | 505 |
| | Rear seats raised | Litres | 271 |
| Fuel tank capacity | Litres | 32 | |

*Fuel consumption will vary due to factors such as vehicle condition, driving style and traffic conditions.
ESP® is a registered trademark of Daimler AG. Bluetooth® is a registered trademark of Bluetooth SIG, Inc.
For more details including iPhone models compatible with Apple CarPlay, see: www.apple.com/ios/carplay.
Apple, Apple CarPlay and iPhone are trademarks of Apple Inc., registered in the U.S. and other countries.
Android Auto requires the Android Auto app from Google Play, and an Android compatible smartphone running Android™ 5.0 Lollipop or higher: www.support.google.com/androidauto. Android and Android Auto are trademarks of Google LLC.



A little goes a loooooong way

At Suzuki we make it easy to own and enjoy your new car every day. Not only are Suzuki cars and SUVs economical – they are affordable, safe and sooooo much fun to drive. With our advanced small engine technology and innovative design, you'll get loads of value without compromising performance.

5 YEAR WARRANTY PACKAGE

Suzuki's comprehensive 3 year/100,000 km new vehicle warranty covers your entire vehicle for the most important part of its lifecycle, and includes an additional 2 year powertrain warranty extension for a total of 5 years worry-free motoring.

5 YEAR SUZUKI ASSIST

With one of New Zealand's most comprehensive roadside assistance programmes, you are covered all day, every day for 5 years from when you first buy your Suzuki – no matter how many kilometres you travel.



SUPPORTING OUR COMMUNITY



SUZUKI NEW ZEALAND LIMITED 1 HEADS ROAD, WHANGANUI. WWW.SUZUKI.CO.NZ

Standard and optional equipment available may vary from time to time. Some international models illustrated – please enquire at your Suzuki dealer for exact specifications. Suzuki New Zealand Ltd reserves the right to change, without notice, prices, colours, materials, equipment, specifications and models, and also to discontinue models. SZA1502 March 2024.