

APV



Way of Life!



All-purpose Solution

While a saloon offers comfort, it lacks the space to accommodate an active family lifestyle or business. Passenger vans may have plenty of room, but their simple interiors often leave occupants wishing for more.

At Suzuki, we asked ourselves: Why can't a passenger vehicle offer the space to suit any lifestyle or purpose, as well as the comfort to enjoy getting to and from various activities?

Being in the ideal position, we answered this question with the ideal vehicle: the new Suzuki APV—with the space and convenience of a passenger van, plus all the comfort of a premium saloon.

Your first ride will prove it's the ideal solution for any one and any purpose.



GLX 7-person model

Dynamic Stability



Relax in Comfort

What do you need to relax? Is spacious comfort preferable to comfortable space? The distinction is rendered meaningless in the cabin of the new APV, where space, comfort and convenience are all given equal attention. The result is a soothing environment to which you'll find yourself returning again and again. You're welcome.



GLX 7-person model/Brown and beige interior



- 1 The APV's three rows of genuinely **comfortable, fully supportive seats** can be arranged in multiple ways to accommodate varying passenger/luggage needs, elevating cabin convenience to new heights.
- 2 The **air conditioner system** lets occupants stay cool wherever they go. An available rear air conditioner with individual controls is smartly positioned overhead, allowing even third-row occupants to enjoy cool cruising comfort.
- 3 The 2nd-row seating accommodations of GLX models feature individually adjustable **captain seats** to ideally suit the occupant's requirements. The captain seats feature a **wide-sliding function**, allowing them to be quickly stowed out of the way to make comfortable room for occupants.
- 4 **Folding down second-row seats** let the occupants take a break on long drives.





People-oriented

The APV is totally selfless in sharing its user-friendly amenities. In this people-focused passenger vehicle, convenience is expanded to the point of indulgence. It's all for a good cause, however: your total comfort.



1

2



3

1,2 The voluminous **centre console tray and glove box** can hold an impressive amount of items, and is conveniently positioned for easy access by both front-seat occupants.

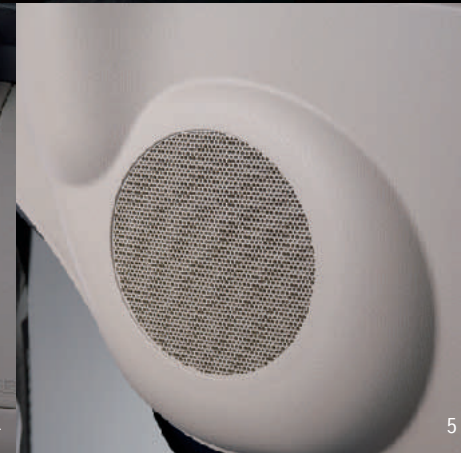
3 Integrated **bottle holders** in front doors are available for GL and GLX models to keep beverages securely within reach yet unobtrusively out of sight.



GLX 7-person model/Brown and beige interior

4 Fill your APV with sound! True audiophiles will be very interested in the ultimate available APV sound system, featuring **CD cassette tuner and MP3 playback function**.

5 **Four-speaker sound systems** are available for GLX and GL models, with **tweeters** additionally available for GLX models. Enjoy!



4

5

Designed to Satisfy



Balanced Performance

The APV is dynamic proof that power is not the only essential ingredient in balanced performance. Harmony occurs when all performance elements integrate smoothly together to ensure stress-free driving comfort for driver and passengers alike.



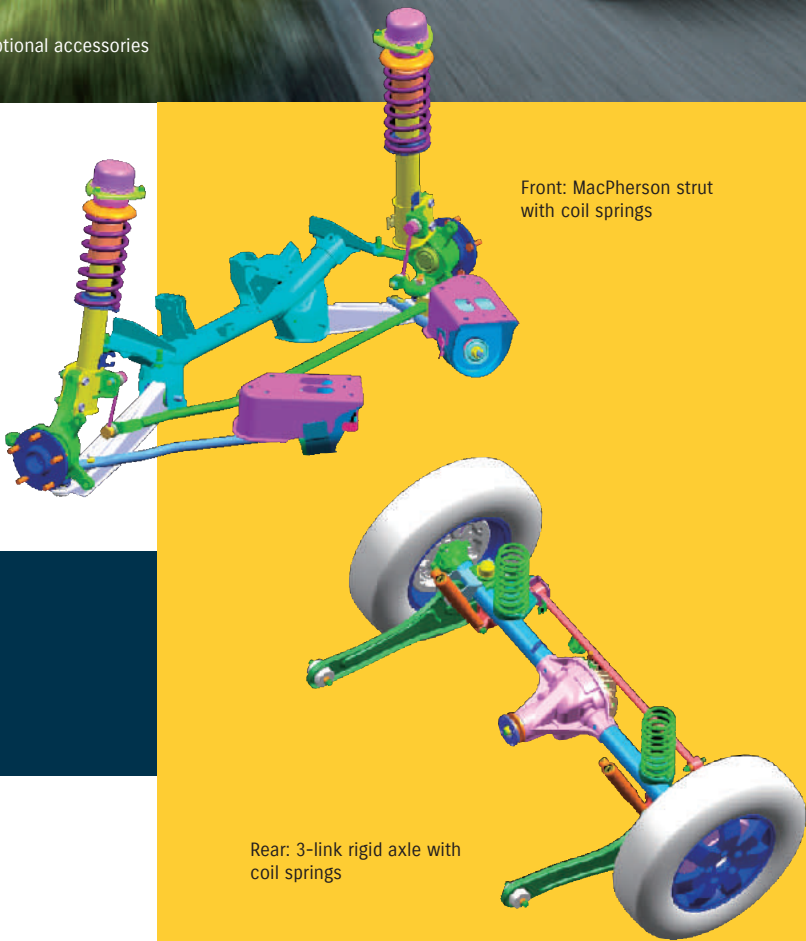
Interior image above is of a parked vehicle.



GLX 7-person model with optional accessories introduced on page 17



3



Front: MacPherson strut with coil springs

Rear: 3-link rigid axle with coil springs



2

1 The compact, lightweight **MacPherson strut front suspension** is specially tuned for straight-line stability. **Rigid rear axle with leaf springs** (GA model), and **3-link rigid rear axle with coil springs** (GL, GLX models) add to solid ride comfort.

2 The APV shows its social conscience with **ECO tyres**, specially developed to increase fuel economy and lessen environmental impact. Sporty **aluminium-alloy wheels** are available for GL and GLX models.

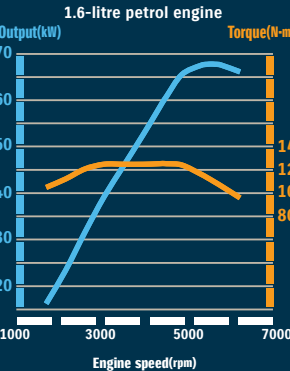
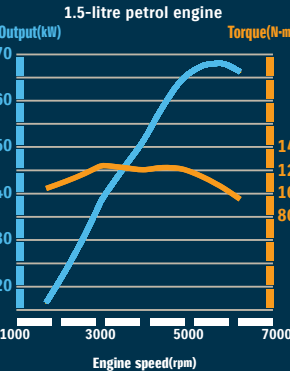


4

3 **Aluminium 16-valve engines** use long-stroke designs and long-branch intake manifolds to generate ample torque at low revolutions to carry multiple occupants in comfort. Featuring excellent all-round output and low-end torque, the 1.5- and 1.6-litre engines also offer significantly enhanced fuel efficiency, which translates into greater fuel economy in all driving conditions.

4 **The smooth-shifting 5-speed manual and electronically controlled 4-speed automatic transmissions** excel in performance and ideally suit the torquy engines.

Engine performance curves





Peace of Mind

Suzuki believe this totally desirable condition is inherently communicated between the developers and users of the APV. The priority assigned to safety and security is apparent in every aspect of its construction, ensuring the confidence and driving satisfaction of all occupants wherever their journeys may take them.

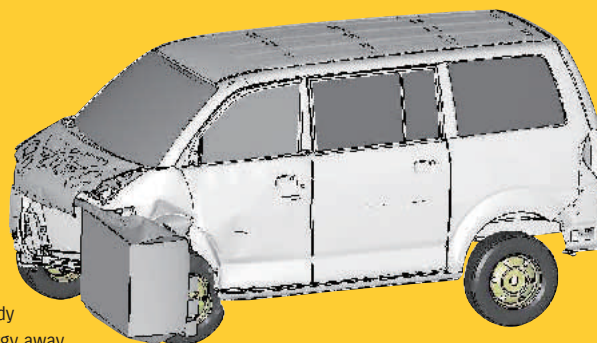


The SRS airbags are shown inflated for descriptive purpose.

1



GLX 7-person model



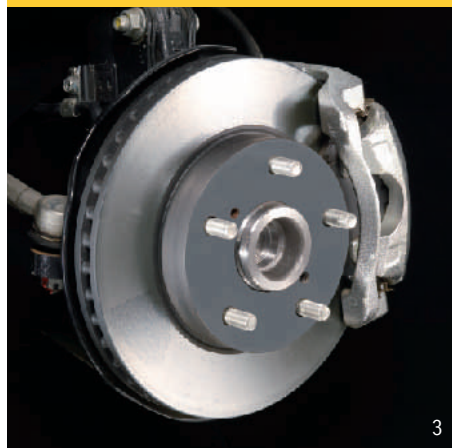
Suzuki's proprietary TECT body directs collision-impact energy away from the occupants, with the nose acting as a buffer for increased protection.



2

- 1 **SRS** (Supplemental Restraint System) **dual front airbags**, when used together with the **3-point ELR** (Emergency Locking Retractor) **seatbelts**, offer front-seat passengers excellent protection in frontal collisions.
- 2 The cabin's rigid construction includes **side impact door beams** to resist deformation and help secure a survival space.
- 3 All models have reliable **ventilated disc brakes** in the front and reliable **drum brakes** in the rear.
- 4 Front **3-point ELR seatbelts** are available with **pretensioners, force limiters and height adjusters**.
- 5 **3-point ELR seatbelts and head restraints** are also available for the outer 2nd- and 3rd-row passenger seats.

The **anti-lock braking system (ABS)** reduces wheel-slip, even in emergency braking, while **electronic brake-force distribution (EBD)** properly distributes braking force among front and rear wheels according to passenger and luggage load.



3



5

Enhance Your Lifestyle with our

Genuine Accessories

Prestige Selection

Your APV is certain to earn “prestige” with the following available accessories:



GLX 7-person model shown with optional accessories. Same model as featured on page 4 and 5.



- Chromed front-grille garnishes
- Front- and rear-bumper corner-guards
- Side body moldings
- Chrome-plated door-mirror covers with turn signals
- Fog lamp chrome garnish (square-type)
- Chrome-plated under-grille garnishes
- Rear garnish, printed with polyurethane

Luxury Selection

Give your APV the “look of luxury” with the following available accessories:

- Black-chromed front grilles
- Front- and rear-bumper corner-guards
- Side body moldings
- Rear-end spoiler with high-mount stop lamp
- Fog lamp chrome garnish (ring-type)
- Chrome-plated under-grille garnishes
- Rear garnish, printed with polyurethane



GLX 7-person model shown with optional accessories. Same model as featured on page 10 and 11.

Sporty Selection

Complement your APV's sporty performance with the following available accessories:

- Gray metallic front grilles
- Fog lamp chrome garnish (ring-type)
- Gray metallic front and rear under-guards



GLX 7-person model shown with optional accessories. Same model as featured on page 12.

A Lasting Impression





Standard and optional equipment available may vary for grades and individual markets. Please enquire at your dealers, as specifications and illustrations may refer to models not available in your region. Specifications in non-metric units are approximate. SUZUKI MOTOR CORPORATION reserves the right to change, without notice, prices, colours, materials, equipment, specifications and models, and also to discontinue models.

Note: Images of vehicles without number plates on public roads are composite photos. Images used in this catalog including those used in composite photos were taken under permission.



SUZUKI MOTOR CORPORATION

300 Takatsuka-cho, Minami-ku, Hamamatsu City, JAPAN

APV CATALOGUE
99999-B1602-0A1 0909 © Printed in Japan