

CELERIO

A+Compact



SUZUKI

MAJOR SPECIFICATIONS

DIMENSIONS		CVT
Overall Length	mm	3,600
Overall Width	mm	1,600
Overall Height	mm	1,540
Wheelbase	mm	2,425
Tread	Front	mm 1,420
	Rear	mm 1,410
Minimum Turning Radius	m	4.7
Minimum Ground Clearance	mm	145
ENGINE AND TRANSMISSION		
Type (Engine)		K10B
No. of Cylinders		3
No. of Valves		DOHC 12V
Displacement	cc	998 (1.0L)
Max. Output	hp @ rpm	67 @ 6000
Max. Torque	Nm @ rpm	90 @ 3500
Fuel Distribution		MPI
Type (Transmission)		CVT
CHASSIS		
Steering		Rack and Pinion with Electric Power Steering
Brakes	Front	Ventilated Disc
	Rear	Leading and Trailing Drum
Suspension	Front	MacPherson Strut with Coil Spring
	Rear	Torsion Beam with Coil Spring
Tires		165 / 65R14
Wheels		14" Alloy Wheels
Spare Tire		Temporary Spare Tire
CAPACITIES		
Seating	Persons	5
Luggage	Liters	254
Fuel Tank	Liters	35
WEIGHTS		
Curb Weight	kg	805 - 845
Gross Vehicle Weight	kg	1,260

OTHER FEATURES

S: Standard NA: Not Available

SAFETY		CVT
Seatbelts		3-pt ELR x 4 + Center Lapbelt on Rear Seats
w/ Pre-tensioner, Force Limiter and Height Adjuster		S
Airbags		Dual
Anti-lock Brake System (ABS)		S
Reverse Sensor		S
Childproof Rear Door Locks		S
Immobilizer		S
Defogger		S
Side Impact Beams		S
Keyless Entry System (Remote Control)		S
POWER FEATURES		
Power Windows		Front and Rear
Power Door Locks		S
Power Side Mirrors		S
AUDIO		
Audio System		7-inch Multimedia Touchscreen
Navigation		S
Speakers		4
Antenna		Front Roof Mounted
Steering Wheel Integrated Audio Controls		NA
INSTRUMENT PANEL		
Tachometer		S
Information Display Integrated into Meter Cluster	Digital Clock	S
	Tripmeter	S
	Odometer	S
Fuel Consumption Gauge		Instantaneous, Average, and Range
Light Off Reminder Alarm		S
Key Left Reminder Alarm		S
Driver's Seatbelt Reminder Lamp		S

CELERIO



When it comes to interior space and comfort, Celerio is literally head and shoulders above the rest. With ample room for legs and big ideas, you can stretch out and relax in a stress-free riding environment. And thanks to the intelligent design, getting in and out is just as comfortable.



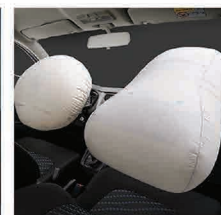
A sharp front mask with expansive character lines flow into a rear profile designed for aerodynamics that work to create a stylish silhouette, belying the spacious interior.



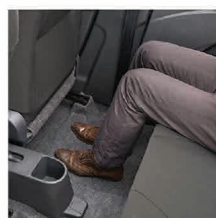
1.0 Liter, 3 Cylinder
DOHC 12V Engine



CVT Transmission
for CVT Variant



Safety Features
with ABS and Dual Airbags



Spacious Legroom and
Higher Headroom



Versatile Carrying Capacity



Aerodynamically Designed
for Better Fuel Efficiency

AVAILABLE COLORS



Pearl Snow White 2 (ZTR)



Metallic Star Silver 4 (ZTS)



Metallic Mineral Gray 2 (ZTU)



Pearl Super Black 2 (ZTT)



Pearl Ablaze Red 3 (ZTW)



Speedy Blue Metallic (ZYH)



Specifications on this brochure are based on the latest available information at the time of production. Photos and Colors in this brochure do not exactly match actual vehicle due to the printing process. Please consult your authorized Suzuki dealer on vehicle specifications. We reserve the right to make changes without prior notice or obligation. Printed September 2021.

For inquiries, please contact: