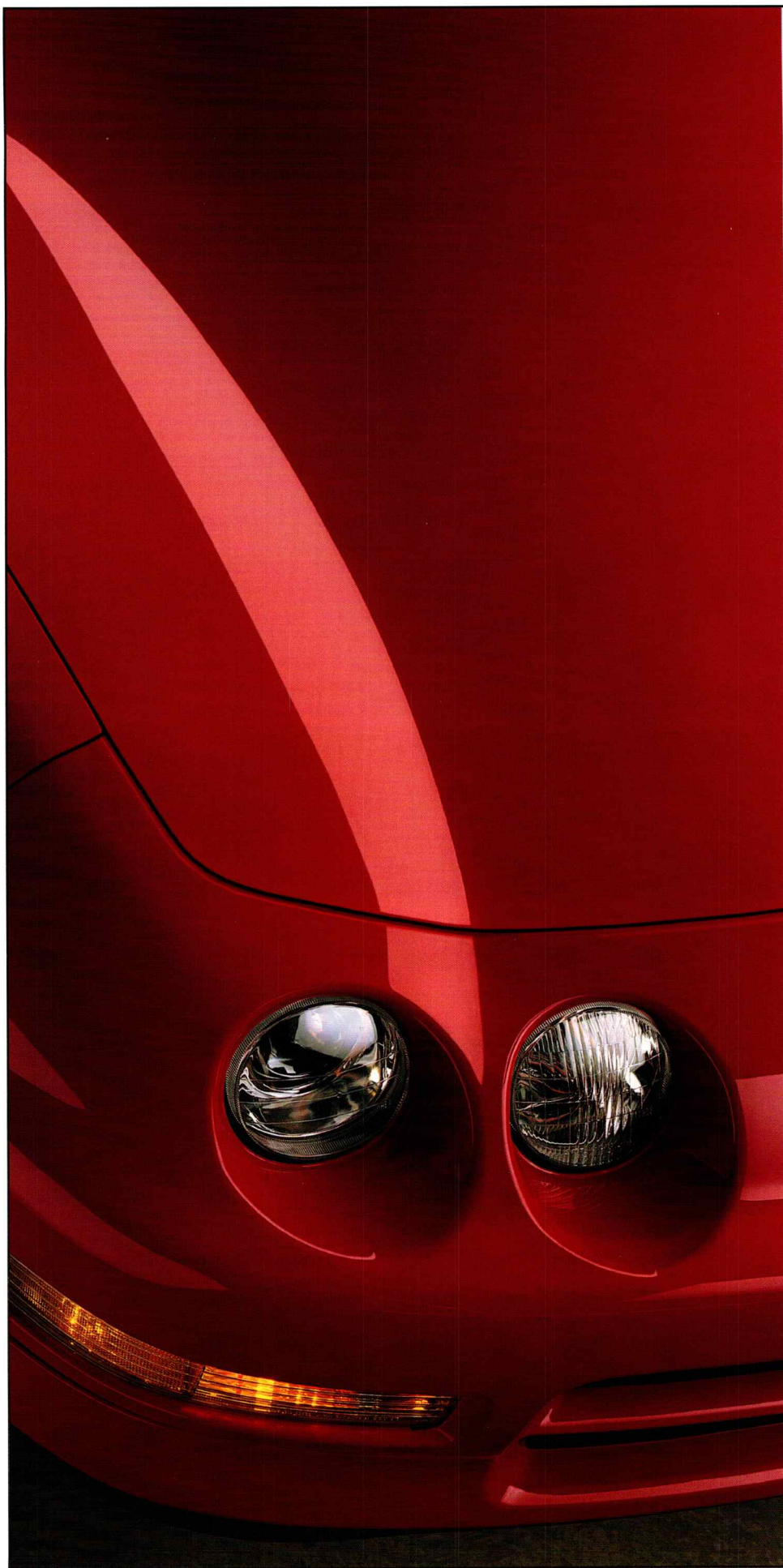


**ACURA**

1 9 9 6 I N T E G R A





THE 1996 ACURA INTEGRA REPRESENTS  
A RARE COMBINATION OF INSPIRING RESPONSE,  
IMPRESSIVE COMFORT AND REMARKABLE PERFORMANCE.

It is also an automobile of exceptional quality,  
constructed with the same meticulous craftsmanship  
that distinguishes every Acura.

With its exhilarating handling characteristics,  
engaging style, highly ergonomic interior,  
racing-inspired engine and advanced safety engineering,  
it is easy to understand why the Acura Integra  
is so often praised by automotive journalists.

And why it is so thoroughly  
enjoyed by its fortunate drivers.



# I n t e g r a



THE 1996 INTEGRA IS EVERY INCH A DRIVER'S CAR. FROM ITS RESPONSIVE ENGINE TO THE PRECISE AND STABLE SUSPENSION, EVERY COMPONENT HAS BEEN ENGINEERED TO MAKE DRIVING MORE SATISFYING. The Integra line-up includes the Sports Coupe and Sports Sedan in RS and LS trim levels, and a Special Edition Coupe and Sedan which feature added components of style and comfort. Each Integra model comes with features such as a three year Roadside Assistance Plan, standard driver's and passenger's side air bags (SRS), side-intrusion hip pads and an optional advanced, electronically controlled 4-speed automatic transmission that constantly reads the road to determine its slope and adjusts the shift schedule.

And then there's the racing-inspired technology of the GS-R which produces a potent 170 hp from an efficient 1.8 litre displacement. The dual-overhead-camshaft, 4-valve-per-cylinder configuration is complemented by Acura's

Variable Valve Timing and Lift Electronic Control (VTEC) system. A unique system pioneered in the Acura NSX.

Other GS-R systems designed to boost performance include oil jet-cooled pistons to enhance durability and friction reducing micro-finished crankshaft journals. Light, but extremely strong, connecting rods improve durability and allow an exceptionally high redline of 8000 rpm. And a precisely tuned intake system enhances engine response at all speeds.

To maximize the power and flexibility of the GS-R engine, Acura engineers designed a 5-speed manual transmission with specially revised ratios. This improves fuel efficiency and performance at cruising speeds.

The sporting feel at the heart of every Integra is enhanced with a shift linkage that provides shorter lever throws, reduced shift effort and greater precision. The resulting shift feel is surpassed only by the NSX.



# S p e c i a l E d i t i o n s

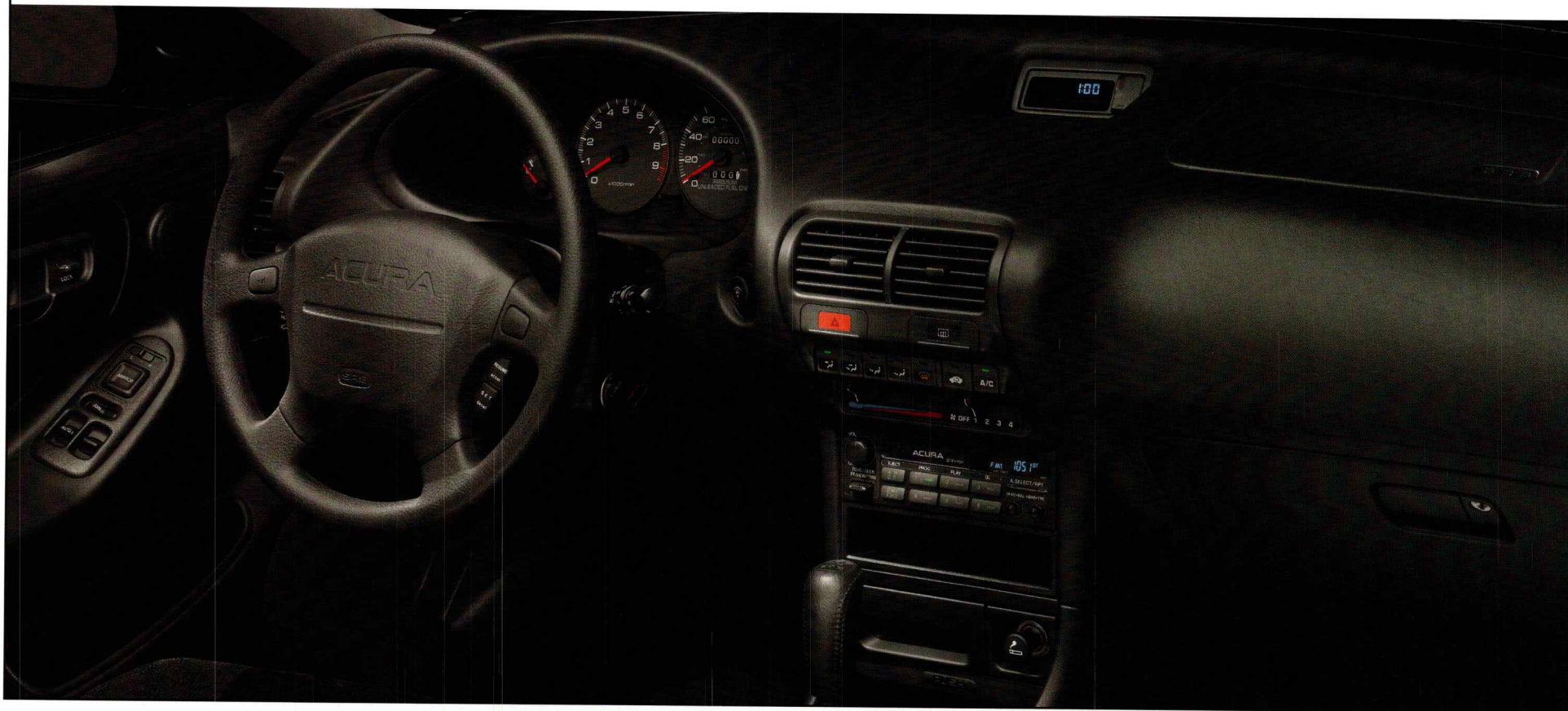


FOR 1996, ACURA IS PROUD TO PRESENT THE LIMITED SPECIAL EDITION INTEGRA COUPE AND SEDAN. THESE METICULOUSLY CRAFTED VEHICLES OFFER DRIVERS THE SUPERB PERFORMANCE AND AGGRESSIVE STYLING THAT DISTINGUISHES THE INTEGRA. Further, every component of the Special Edition Integra has been designed for drivers who want it all. Both the Special Edition Integra Coupe and Sedan feature a rich leather interior that is as impressive to witness as it is to experience. The Special Edition Integra Sedan draws attention with

its unique and elegant wood print front console, while the Special Edition Integra Coupe features a distinctive, racing-inspired rear spoiler designed to enhance the spirit of performance. The satisfaction and sophistication of both the Special Edition Integra Coupe and Sedan is heightened by larger 15-inch alloy wheels, and GS-R type front stabilizer bar and rear muffler. For exhilarating handling, engaging style and an unforgettable driving experience, the Special Edition Integra delivers it all.



# I n t e r i o r



*Conveniently located within the reach of the driver and passenger, the cup holder discreetly folds back into the dash when not in use.*

THE ACURA APPROACH TO CAR DESIGN PLACES THE HIGHEST PRIORITY ON MAKING THE DRIVER'S TIME AT THE WHEEL EXCITING, COMFORTABLE AND SAFE. To that end, critical controls are grouped around the steering wheel and within easy reach. The controls are strategically placed to minimize the amount of time the driver's attention is diverted from the road ahead. In addition to their placement, the control buttons are designed with touch-

sensitive feedback so that the driver doesn't have to wonder if a particular function has been activated. In Special Edition Integra Sedans, a luxurious wood print front console has been included for added prestige.

The Integra seats are sculpted and feature deep bolsters to hold the driver in place, and are constructed with different cushion densities to provide proper anatomical support. In addition, the mounting system for the front seats provides

increased foot room for rear passenger comfort. The driver's seat has a lumbar adjustment to tailor it for maximum driver comfort.

Interior upholstery features a thick, rich moquette fabric designed to be comfortable and durable. Special Edition Integra Coupes and Sedans feature a rich leather interior that is both alluring and distinctive. For optimum legibility and visibility, the instruments are large white-on-black analog units and are strategically located to be visible around and through the tilt adjustable steering wheel. The wheel itself is thick, like that of a sports car, and it is designed to encourage the proper hand position for enthusiastic driving. To maximize head room, the Integra LS, SE and GS-R models feature a standard, power-operated exterior sliding sunroof that takes up less head room than a conventional interior sliding roof design.



*Special Edition models feature rich leather seats for exquisite style and optimum comfort.*



# F e a t u r e s



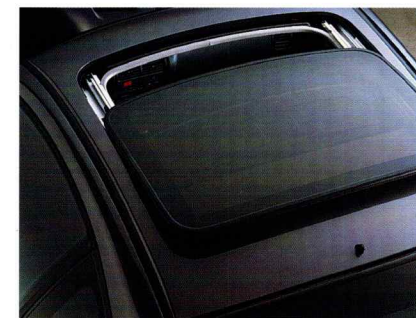
*In all Integra models, the ergonomically designed control panel located in the driver's side front door handle, houses power controls for windows and door mirrors.*

THE 1996 INTEGRA PROVIDES A COMPREHENSIVE ARRAY OF STANDARD FEATURES DESIGNED TO ENHANCE THE DRIVING EXPERIENCE. These features are precisely engineered to be functional and to offer excellent durability and reliability. The air conditioning system, standard in the LS, SE and GS-R models, uses the environmentally friendly R-134a refrigerant. This is a newly developed, compact unit that provides more than ample cooling capacity even in extreme temperature conditions. Heated or cooled air is delivered into the cabin by eight dash-mounted vents, four of which are side window demisters to enhance visibility.

To minimize diverting the driver's attention from the road ahead, all Integra models feature power windows and power door mirrors. Additionally, RS Sedan, LS, SE and GS-R models feature power door locks as standard equipment. Other standard features in all Integra

models include rear window defroster with timer (rear wiper/washer in coupe models), tilt-adjustable steering column, beverage holder and a powerful AM/FM stereo/cassette sound system. In the GS-R, SE and LS Sedan models, the sound system is equipped with six speakers, two of which are door-mounted tweeters. The RS Coupe and Sedan and the SE and LS Coupe models feature a 4-speaker sound system. All models feature a power antenna, and the LS, SE and GS-R offer the security of an anti-theft feature for the radio.

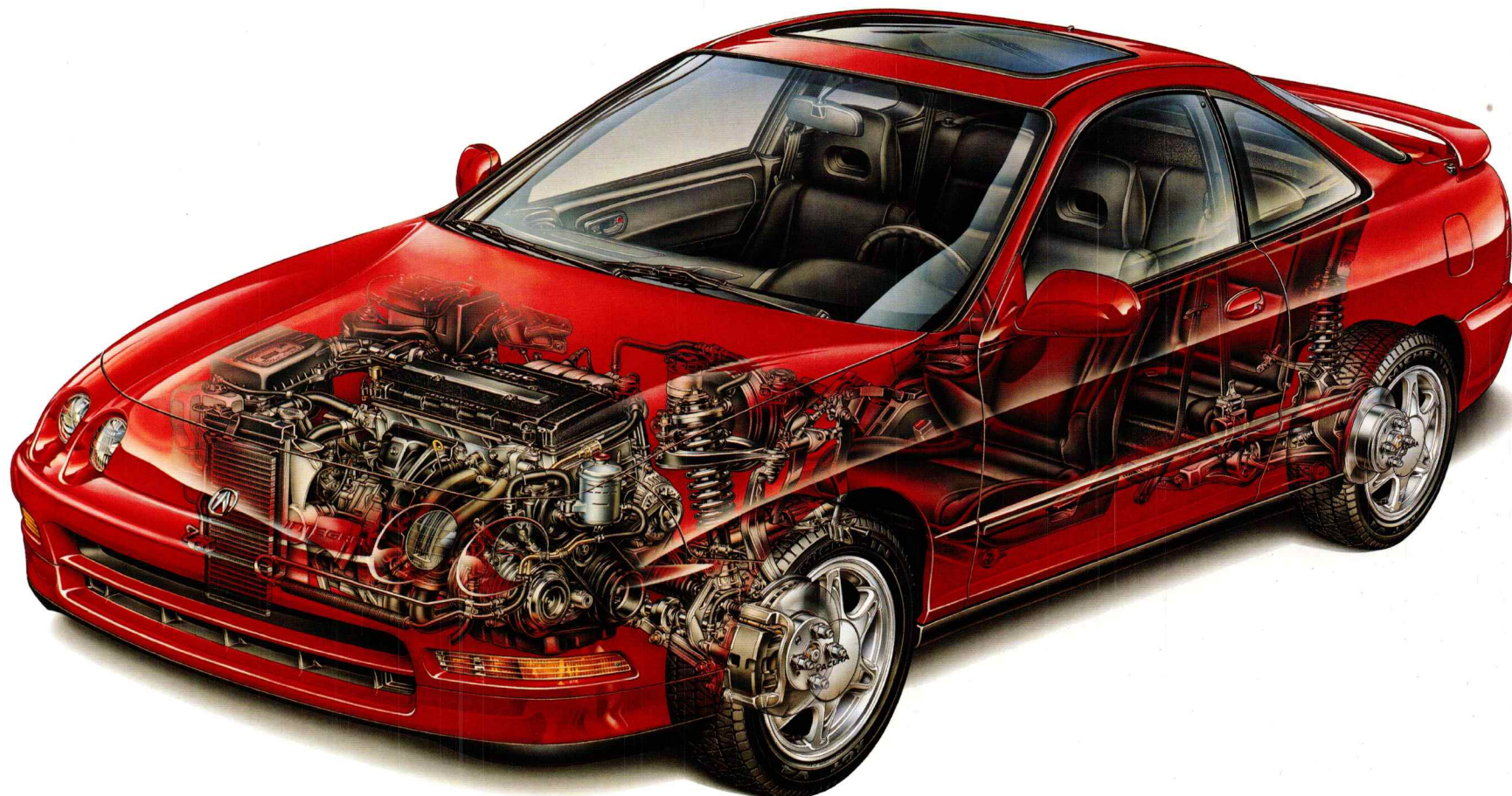
To increase cargo-carrying capacity, the Integra Coupe is equipped with a 50/50 split fold-down rear seatback. The Special Edition Coupe comes equipped with aerodynamic rear spoiler, while both Coupe and Sedan models feature high performance, 15-inch alloy wheels and GS-R type front stabilizer bar and rear muffler.



*Integra LS, SE and GS-R models feature a power-operated exterior sliding sunroof. This compact new design provides more head room.*



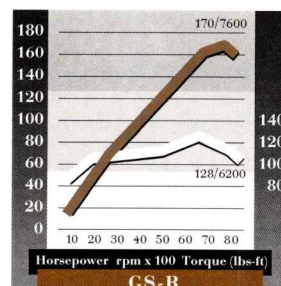
# E n g i n e e r i n g



DESIGNED WITH THE SAME DEDICATION TO SOPHISTICATION AND HIGH PERFORMANCE THAT FOSTERED THE WORLD-RENOWNED ACURA NSX SPORTS CAR, THE INTEGRA UTILIZES STATE-OF-THE-ART TECHNOLOGY TO DELIVER AN UNFORGETTABLE DRIVING EXPERIENCE.

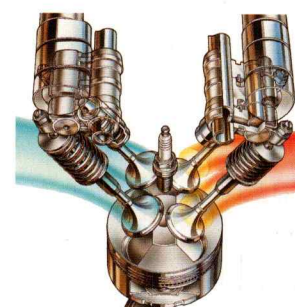
The powerplant of every Acura Integra features a racing-inspired, dual-overhead-camshaft, 4-valve-per-cylinder layout for breathtaking response. GS-R models offer even greater power, thanks to the amazing VTEC engine system that produces a remarkable 170 hp at 7600 rpm from just 1.8 litres of displacement.

*Acura Integra GS-R - The advanced VTEC system and dual-overhead-camshafts work with the efficient combustion chambers and tuned intake and exhaust systems to create an exceptionally responsive and flexible engine, one that offers abundant low- and mid-range torque with exhilarating high rpm horsepower.*



A close-ratio 5-speed manual transmission complements the high-revving character of the GS-R engine; standard on RS, LS and SE models is a slick-shifting 5-speed manual transmission. The optional 4-speed automatic transmission on LS, RS and SE models uses a Grade Logic Control System that adjusts its shifting program automatically for optimum performance and enhanced stability in differing driving conditions.

Every Integra includes such advanced features as a 4-wheel double-wishbone suspension, a 4-wheel disc braking system, and variable power-assisted steering.



*VTEC stands for Variable Valve Timing and Lift Electronic Control System. Translation: two engines in one, with abundant low-speed torque and truly remarkable peak power.*

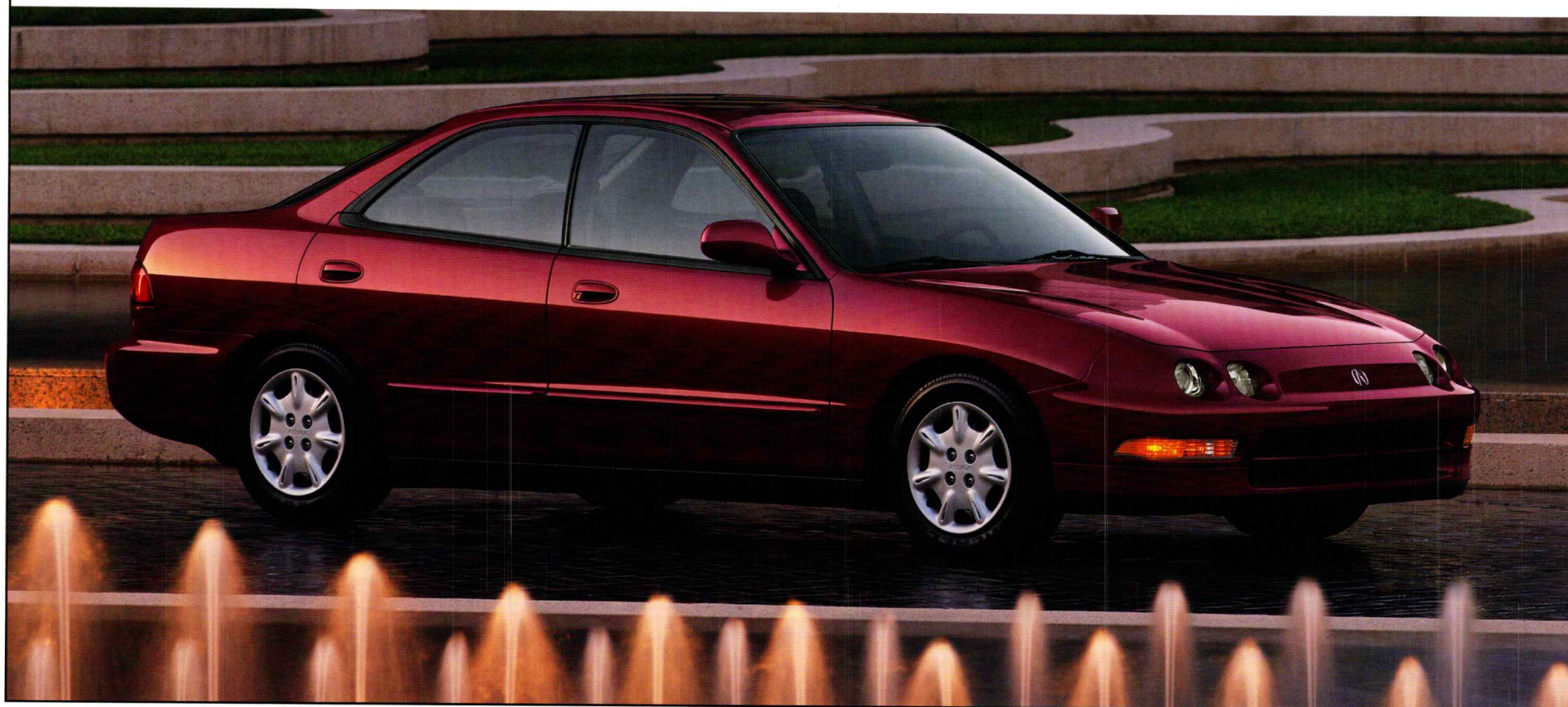
*Opposite page: Integra GS-R Sports Coupe in Vogue Silver Metallic with nose mask and RS Sports Sedan in Desert Mist Metallic with optional alloy wheels/gold-finish kit/rear wing spoiler/fog lights.*







# D e s i g n



*The Integra Coupe features a pin-guide door sash for the front door windows to enhance glass rigidity and reduce road and wind noise. It also improves sealing for better weather protection.*

Finite Element Analysis at the Cray II supercomputer to find the best way to utilize a limited amount of metal. The result is a steel-reinforced monocoque structure that weighs no more than its predecessor, but which is significantly stronger by any measure of structural integrity.

The aerodynamic exterior has been carefully sculpted using scientific wind tunnel technology to minimize air drag, resist buffeting in a crosswind,

THE PRINCIPAL FOUNDATION OF ANY HIGH-PERFORMANCE ROAD CAR IS A HIGHLY RIGID, EXTREMELY STRONG BASIC STRUCTURE. The challenge is to build in greater stiffness and increased resistance to twisting and bending loads, without making the structure heavy and inefficient.

Our engineers spent the equivalent of millions of work-hours engaged in

produce downforce at the rear to enhance stability, and reduce wind noise.

The one-piece front bumper with projector beam headlights contributes to the aerodynamic efficiency. The advanced projector beam technology also contributes to safety by providing a brighter, longer-reaching beam while practically eliminating glare to oncoming traffic.

The 4-wheel independent double-wishbone suspension has been engineered to exercise greater control over toe-change in the full spectrum of dynamic conditions. As a result of this design the Integra provides excellent response to steering input and exceptionally faithful tracking when driving on curvy roads.

To gaze upon the Acura Integra is to appreciate the hand of the designer.



*The Special Edition Coupe comes equipped with body-coloured aerodynamic rear spoiler with integral brakelight and is personalized by Special Edition badging.*

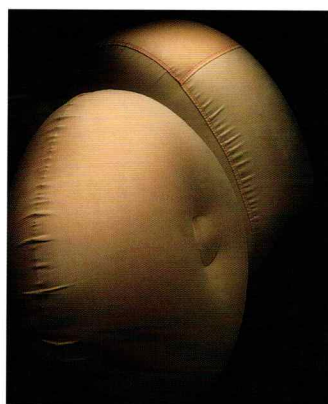


# S a f e t y



U.S. model shown.

IN ALL ACURA AUTOMOBILES, ACTIVE SAFETY SYSTEMS ARE DESIGNED TO HELP AVOID A COLLISION. Passive safety systems aid in minimizing injury to the occupants in the event of an unavoidable collision. Key among the sophisticated passive safety features of the Integra is the driver's and passenger's side air bag



*Driver's and passenger's side air bags (SRS) are standard in all models. To maximize reliability, the SRS employs gold-plated, corrosion resistant electrical connectors.*

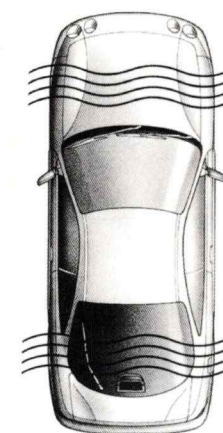
Supplemental Restraint System (SRS), standard in all models. Both air bags are designed to activate simultaneously in a frontal collision. To ensure that the system functions with maximum reliability, the electrical connectors of the SRS are gold-plated to resist corrosion. The SRS is designed to work in concert with the 3-point seat belt system. The rear seats are also equipped with 3-point outboard seat belts.

To help reduce the potential for injury in a side impact, the 1996 Integra features sturdy

side-intrusion door beams and hip pads. These crushable pads are designed to dissipate energy on impact, thus reducing the force transferred to the interior cabin of the vehicle.

The Integra LS, SE and GS-R models also feature the latest-generation Anti-Lock Braking System (ABS), which modulates brake line pressure to help retain steering control under maximum braking force.

The structure of the Integra is designed to be rigid and to reduce intrusion of collision forces into the cabin. The advanced front and rear crumple zones are designed to absorb and dissipate collision forces, helping to retain the structural integrity of the passenger cabin. With the occupants properly restrained, these safety systems help minimize injury in a collision and are testimony to Acura's pursuit of greater safety standards.



*Front and rear crumple zones have been designed with the aid of an advanced Cray super-computer. They're designed to deform in a progressive, controlled manner to dissipate collision force before it reaches the cabin.*



# Specifications

## ENGINE AND ELECTRICAL

	RS, LS, SE	GS-R
Engine Type	1.8-litre, 4-cylinder, 16-valve, DOHC	1.8 litre, 4-cylinder, 16-valve DOHC with Variable Valve Timing and Lift Electronic Control (VTEC) system
Horsepower, SAE net	139 hp @ 6300 rpm	170 hp @ 7600 rpm
Torque, SAE net	122 lbs.-ft. @ 5200 rpm	128 lbs.-ft. @ 6200 rpm
Redline	6800 rpm	8000 rpm
Bore & Stroke	81 mm x 89 mm (3.19 in. x 3.50 in.)	81 mm x 87.2 mm (3.19 in. x 3.43 in.)
Displacement	1834 cc (112 cu. in.)	1797 cc (110.0 cu. in.)
Compression Ratio	9.2:1	10.0:1
Alternator	12V, 90 amp max.	
Induction System	Programmed Fuel Injection (PGM-FI)	Programmed Fuel Injection (PGM-FI) with dual-stage intake manifold
Valvetrain	4-valves-per-cylinder, belt-driven, dual-overhead-camshafts	4-valves-per-cylinder, belt-driven, dual-overhead-camshafts with VTEC system
Drivetrain	Transverse front engine/front-wheel drive with equal-length halfshafts	
Engine Block	Aluminum alloy with cast-iron cylinder liners	
Cylinder Head	Aluminum alloy	
Emission Control	3-way catalytic converter	
Ignition System	Electronic	Electronic with knock sensor
Battery	65 amp/hr maintenance-free	

	5-SPEED MANUAL (STANDARD)		4-SPEED AUTOMATIC (OPTIONAL) WITH GRADE LOGIC CONTROL SYSTEM
Transmissions	RS, LS	GS-R*	RS, LS
Ratios (:1)			
1st	3.230	3.230	2.722
2nd	1.900	1.900	1.468
3rd	1.269	1.360	0.975
4th	0.966	1.034	0.638
5th	0.714	0.787	-
Reverse	3.000	3.000	1.954
Final Drive	4.266	4.400	4.357

\*GS-R available with 5-speed manual transmission only. -- = Not Available

## BODY/SUSPENSION/CHASSIS

Body Type	Unit body
Front Suspension	Independent double-wishbone with coil springs and stabilizer bar; RS, LS: 22.1 mm (0.87 in) diameter; SE, GS-R: 24.0 mm (0.94 in) diameter
Rear Suspension	Independent double-wishbone with coil springs and stabilizer bar RS, LS, SE Sports Coupe: 12.9 mm (0.51 in) diameter RS, LS, SE Sports Sedan: 14.0 mm (0.55 in) diameter GS-R: 14.0 mm (0.55 in) diameter
Shock Absorbers	Gas-pressurized, front and rear
Steering Type	Rotary-valve, variable power-assisted, rack-and-pinion
Steering Wheel Turns, lock-to-lock	2.98
Turning Circle, curb-to-curb	Sports Coupe: 10.6 m (34.8 ft.); Sports Sedan: 10.8 m (35.4 ft.)
Wheels	RS, LS Sedan: 5.5 JJ x 14 steel; LS Coupe: 5.5 JJ x 14 cast aluminum alloy; SE, GS-R: 6.0 JJ x 15 cast aluminum alloy
Tires	RS: P195/60 R14 85H M+S; LS: P195/60 R14 85H M+S; SE, GS-R: P195/55 R15 84V M+S
Braking System	Dual-diagonal, power-assisted, 4-wheel disc brakes
Front Discs	Ventilated, 262 mm (10.3 in.) diameter
Rear Discs	Solid, 239 mm (9.4 in.) diameter
Parking Brake	Rear, mechanical
Anti-Lock Braking System	LS, SE, GS-R: Acura-designed Anti-Lock Braking System (ABS) with 4 wheel-speed sensors and electronic hydraulic control unit

## CAPACITIES

Crankcase	RS, LS, SE: 4.6 litres (1.01 Imp. gal.) refill capacity including filter GS-R: 4.8 litres (1.05 Imp. gal.) refill capacity including filter	
Cooling System		
Manual Transmission	RS, LS, SE: 6.4 litres (1.41 Imp. gal.); GS-R: 6.7 litres (1.47 Imp. gal.)	
Automatic Transmission	RS, LS, SE: 6.7 litres (1.47 Imp. gal.)	
Fuel Tank	50 litres (11.0 Imp. gal.)	
Passenger Volume	Coupe 2184 L (77.2 cu. ft.)	Sedan 2356 L (83.2 cu. ft.)
Cargo Volume	377 L (13.3 cu. ft.)	348 L (12.3 cu. ft.)

## FUEL ECONOMY

Transport Canada Estimated Fuel Consumption, City/Highway	RS, LS, SE (5-speed): 9.4/6.9L/100 km RS, LS, SE (Automatic): 9.9/7.0L/100 km GS-R (5-speed): 9.3/7.0L/100 km
Recommended Fuel	RS, LS and SE regular unleaded, GS-R premium unleaded

## SAFETY FEATURES

Driver's and passenger's side air bag Supplemental Restraint System (SRS)
Anti-Lock Braking System (ABS) (LS, SE and GS-R)
3-point rear outboard seat belts
Impact-absorption zones (front/rear)
Side-intrusion hip pads
Front/rear seat side-intrusion shoulder pads (Sports Sedan)
Side-impact door beams
5-mph bumpers (front/rear)
Projector beam halogen headlights
Safety glass
Tinted glass
Breakaway inside rearview mirror
Collapsible steering column
All-around visibility: Sports Coupe: 299°; Sports Sedan: 306.3°
Centre high-mount brakelight
All Season radial tires

## COMFORT AND CONVENIENCE

	Sports Coupe				Sports Sedan		
	RS	LS	SE	GS-R	RS	LS	SE
Air conditioning	Opt	•	•	•	Opt	•	•
AM/FM stereo, electronically tuned radio with cassette, Dolby*, 4 speakers, seek tuning and anti-theft feature	•	•*	•*	•*†	•	•*†	•*†
Beverage holder	•	•	•	•	•	•	•
Power antenna	•	•	•	•	•	•	•
Power-operated sunroof	-	•	•	•	-	•	•
Power windows	•	•	•	•	•	•	•
Power door locks	-	•	•	•	•	•	•
Cruise control	-	•	•	•	-	•	•
Soft-touch heating and ventilation controls	•	•	•	•	•	•	•
Tachometer	•	•	•	•	•	•	•
Adjustable steering column	•	•	•	•	•	•	•
Two-speed variable intermittent windshield wipers	•	•	•	•	•	•	•
Side window defoggers	•	•	•	•	•	•	•
Remote hatch/trunk and fuel-filler-door releases	•	•	•	•	•	•	•
Overhead map lights	-	•	•	•	-	•	•
Digital quartz clock	•	•	•	•	•	•	•
Low-fuel warning light	•	•	•	•	•	•	•

• = Standard Opt = Optional - = Not available \* = With anti-theft feature † = 6 speakers



EXTERIOR FEATURES

	Sports Coupe				Sports Sedan		
	RS	LS	SE	GS-R	RS	LS	SE
Body-coloured front and rear bumpers, front air dam	•	•	•	•	•	•	•
Tinted glass	•	•	•	•	•	•	•
Dual power-operated door mirrors	•	•†	•†	•†	•†	•†	•†
Projector beam halogen headlights	•	•	•	•	•	•	•
Full wheel covers	•	-	-	-	•	•	•
Alloy wheels	Opt	•	•	•	Opt	Opt	•
Protective body-side mouldings	•	•†	•†	-†	•	•†	•†
Rear window defroster with timer	•	•	•	•	•	•	•
Rear window wiper/washer	•	•	•	•	-	-	-
Aerodynamic body-coloured rear spoiler with brake light	Opt	Opt	•	•	Opt	Opt	Opt
3-coat, 3-bake paint process	•	•	•	•	•	•	•

• = Standard   Opt = Optional   - = Not Available   † = Body-coloured

INTERIOR DIMENSIONS

	RS Sports Coupe		RS Sports Sedan	
FRONT				
Head Room	980 mm	(38.6 in.)	988 mm	(38.9 in.)
Leg Room	1085 mm	(42.7 in.)	1073 mm	(42.2 in.)
Hip Room	1278 mm	(50.3 in.)	1290 mm	(50.8 in.)
Shoulder Room	1314 mm	(51.7 in.)	1320 mm	(52.0 in.)
REAR				
Head Room	890 mm	(35.0 in.)	914 mm	(36.0 in.)
Leg Room	714 mm	(28.1 in.)	830 mm	(32.7 in.)
Hip Room	1119 mm	(44.1 in.)	1267 mm	(49.9 in.)
Shoulder Room	1240 mm	(48.8 in.)	1278 mm	(50.3 in.)

EXTERIOR DIMENSIONS

	Sports Coupe			Sports Sedan		
Wheelbase	2570 mm (101.2 in.)			2620 mm (103.1 in.)		
Track, front	1475 mm ( 58.1 in.)			1475 mm ( 58.1 in.)		
Track, rear	1470 mm ( 57.8 in.)			1470 mm ( 57.8 in.)		
Length	4380 mm (172.4 in.)			4525 mm (178.1 in.)		
Width	1710 mm ( 67.3 in.)			1710 mm ( 67.3 in.)		
Height	1335 mm ( 52.6 in.)			1370 mm ( 53.9 in.)		
Minimum Ground Clearance	150 mm ( 5.9 in.)			150 mm ( 5.9 in.)		
Curb Weight:						
Manual Transmission (GS-R)	1210 kg (2667 lbs)			-		
Manual Transmission (LS)	1199 kg (2643 lbs)			1242 kg (2738 lbs)		
Automatic Transmission (LS)	1218 kg (2685 lbs)			1261 kg (2780 lbs)		
Manual Transmission (RS)	1147 kg (2529 lbs)			1192 kg (2628 lbs)		
Automatic Transmission (RS)	1166 kg (2570 lbs)			1211 kg (2670 lbs)		
Weight Distribution,	RS	LS	GS-R	RS	LS	GS-R
(%) front/rear	62/38	63/37	64/36	61/39	62/38	64/36

- = Not Available

SEATING AND TRIM

	Sports Coupe				Sports Sedan		
	RS	LS	SE	GS-R	RS	LS	SE
Reclining front bucket seats	•	•	•	•	•	•	•
50/50 split fold-down rear seatback	•	•	•	•	-	-	-
One-piece fold-down rear seatback	-	-	-	-	•	•	•
Driver's seat with adjustable lumbar support	•	•	•	•	•	•	•
Front passenger "walk-in" seat	•	•	•	-	-	-	-
Centre console with armrest	•	•	•	•	•	•†	•
Full interior carpeting	•	•	•	•	•	•	•
Full cargo area carpeting	•	•	•	•	•	•	•
Rear cargo area cover	•	•	•	-	-	-	-

• = Standard   - = Not Available   † = With wood-print trim

INTEGRA SPECIAL EDITION

Standard features included with the Integra Special Edition Sports Coupe and Integra Special Edition Sports Sedan:

- 15-inch alloy wheels
- GS-R type front stabilizer bar and rear muffler
- Leather-trimmed interior
- Simulated wood print front console (Sports Sedan)
- Special Edition Badging
- High-performance tires
- Aerodynamic body-coloured rear spoiler with brakelight (Sports Coupe)

ACURA LEASE

Our goal is to offer superior service and innovative financial products that will allow you to drive away in the vehicle of your choice as well as staying within your monthly payment "comfort zone".

Contact your local dealer to see how an ACURA LEASE can be tailored to meet your individual needs.

\*A genuine service of Honda Canada Finance Inc. Conditions, restrictions and pre-payment requirements might apply O.A.C.

ACURA ROADSIDE ASSISTANCE

24-hour Roadside Service:

- Dispatch Emergency Roadside Service
- Emergency Lockout Service
- Winching
- Mechanical Breakdown Towing

Emergency Transportation Allowance • Trip Interruption Benefits

- Traffic Accident Services
- Emergency Message Relay Service
- Tire Road Hazard
- Car Rental
- The Acura Trip Planning Service
- Dealer Locator Service

WARRANTIES

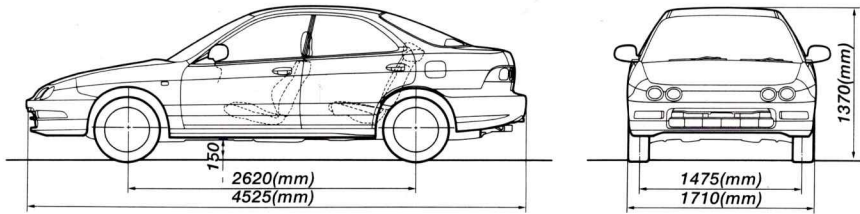
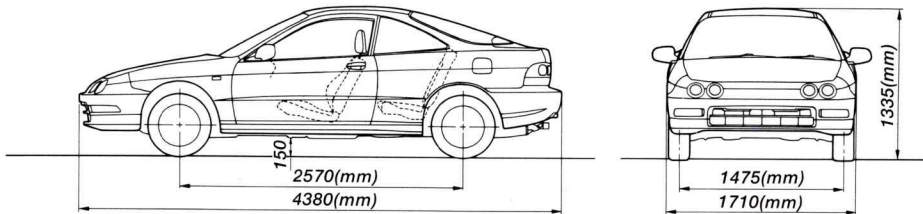
Major Component	5-year/100,000 km limited warranty
Vehicle	3-year/60,000 km distributors limited warranty
Rust Perforation	5-year/unlimited distance warranty
Accessories	3-year/60,000 km limited warranty*

Regular maintenance items, parts subject to normal wear and replacement, and certain other items are excluded. See your Acura dealer for the terms and conditions of limited warranties.

\*When installed at the time of new vehicle delivery.

*Specifications, features, illustrations and equipment shown in this catalogue are based upon the latest available information at the time of publication.* Although descriptions are believed to be correct, accuracy cannot be guaranteed. Honda Canada Inc. reserves the right to make changes at any time, without notice or obligation, in colours, specifications, accessories, materials and models. Some vehicles are shown with optional equipment. Dolby® is a registered trademark of Dolby Laboratories.

1996 Acura Division of Honda Canada Inc., 715 Milner Avenue, Scarborough, Ontario Canada M1B 2K8. Acura, NSX-T, Legend, TL and Integra are registered trademarks of Honda Motor Co. Ltd.





# A c c e s s o r i e s



*State-of-the-art technology, yet as simple to use as the radio. The Acura in-dash cellular telephone is designed to help you keep your hands on the wheel and your attention on driving.*



*Personalize your prized possession with distinctive 24K gold-plated, Acura emblems and exhaust finishers. Complement the performance image with a stylish aerodynamic rear spoiler.*



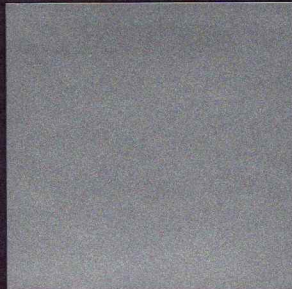
*Add tough polymer coated alloy wheels to give your Integra a distinctive sporty look without altering the factory suspension geometry. Acura's precision optic fog lights add peripheral light for better vision in poor driving conditions. Our customized nose mask protects your vehicle's front end from abrasion and road debris.*



*Located unobtrusively in the trunk, our premium 6-disc changer provides up to 7 hours of uninterrupted music. All CD control functions are fully integrated with the Acura stereo system for convenience and ease of operation.*



# COLOUR AND TRIM



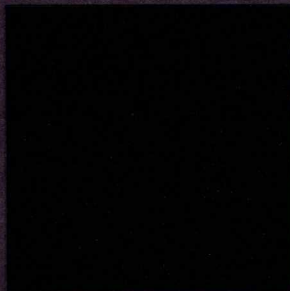
Vogue Silver Metallic



Granada Black Pearl



Milano Red



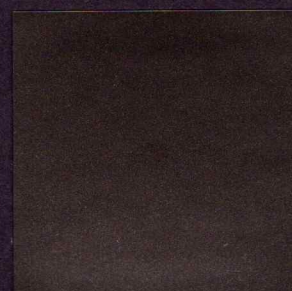
Cypress Green Pearl



Black Currant Pearl



Frost White



Desert Mist Metallic



Matador Red Pearl

## EXTERIOR

### Integra Sports Coupe GS-R

Vogue Silver Metallic  
Granada Black Pearl  
Milano Red  
Cypress Green Pearl

## INTERIOR

Ebony  
Ebony  
Ebony  
Sandstone

### Integra Sports Coupe SE

Black Currant Pearl  
Milano Red  
Granada Black Pearl

Graphite  
Ebony  
Ebony

### Integra Sports Coupe LS

Frost White  
Granada Black Pearl  
Vogue Silver Metallic  
Milano Red  
Cypress Green Pearl

Graphite  
Ebony  
Ebony  
Ebony  
Sandstone

### Integra Sports Coupe RS

Granada Black Pearl  
Milano Red  
Vogue Silver Metallic  
Cypress Green Pearl

Ebony  
Ebony  
Ebony  
Sandstone

### Integra Sports Sedan SE

Granada Black Pearl  
Cypress Green Pearl  
Desert Mist Metallic

Graphite  
Sandstone  
Sandstone

### Integra Sports Sedan LS

Granada Black Pearl  
Black Currant Pearl  
Matador Red Pearl  
Desert Mist Metallic  
Cypress Green Pearl

Ebony  
Graphite  
Graphite  
Sandstone  
Sandstone

### Integra Sports Sedan RS

Vogue Silver Metallic  
Black Currant Pearl  
Desert Mist Metallic  
Cypress Green Pearl

Ebony  
Graphite  
Sandstone  
Sandstone





ACURA

Designed with purpose. Driven by passion.