

2004

ACURA

RSX



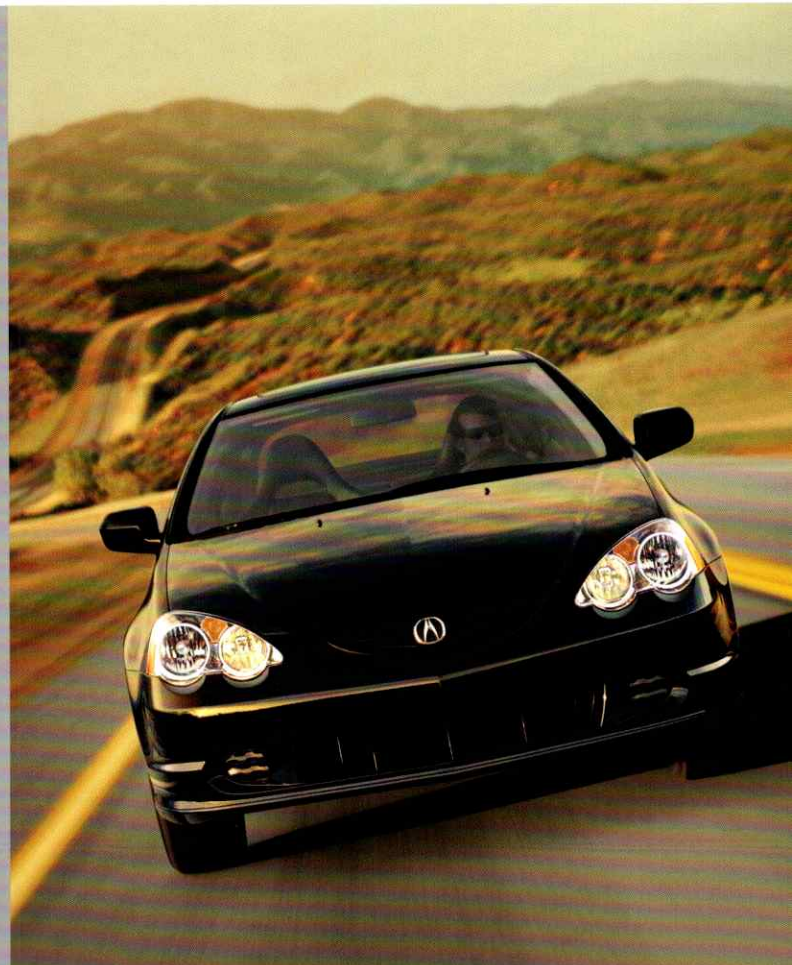


Your standards aren't unrealistic after all. You don't have to settle or compromise. As proof, consider the impressive range of Acura automobiles. Each is crafted to give you unparalleled performance, style and sophistication with the exhilaration born of our racing heritage. Built for the few, by the few. Experience the next level from Acura.



DRESSED TO THRILL

There's nothing subtle about the performance prowess of the Acura RSX. It's all right there. A low, ground-clenching stance. A wind-slicing shape. And wide low-profile tires made for cornering. Underneath there's a racing-inspired suspension system and a choice of two powerful i-VTEC™ engines bred to cover a lot of pavement in very little time. Combined with Acura's legendary level of sophistication and a host of comfort and convenience features, life behind the wheel is an extraordinary experience.







MASTER THE ART OF DRIVING

Like an extension of your nerve endings, wrapped in a sleek body. The 2004 Acura RSX is a finely honed driving machine. Just turn the key. Drop the shift lever into gear. Then let the RSX show you its credentials. Fluid and smooth at all speeds, the i-VTEC engine produces a Formula One-like growl at high rpms. The "intelligent" i-VTEC system also features Variable Timing

Control (VTCTM), so torque is available whenever you want it. Boasting 160 peak horsepower at 6500 rpm, power is abundant for the RSX. Then there's the heart pounding RSX Type S, producing 200 horses at 7400 rpm. All coupled to some of the truest shifting gearboxes around. So prepare for a truly unique experience. The art of driving may never be the same again.





① The RSX Type S features a close-ratio, 6-speed manual transmission. Its precise, short throws are similar to a race car's shift action. ② The RSX and RSX Premium are available with a Sequential SportShift™ automatic transmission. It's an intelligent 5-speed that lets you enjoy a fully automatic shift mode, or snap the lever forward and back for upshifts and downshifts.



Equipped with ultra high performance features, the RSX Type S is designed expressly for the serious driving enthusiast.

You'll appreciate the sheer joy of cornering provided by this sports machine. It achieves quick handling response, yet it's still smooth and compliant over bumps and on rough roads thanks to its 4-wheel independent suspension. Handling is further aided by a torque-sensitive power steering system. This feature yields directional stability, steering smoothness, and nimble response.

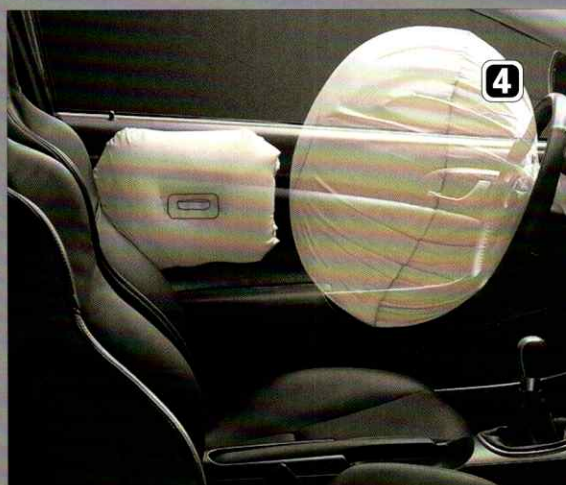




TAKE OFF WITH CONFIDENCE

Challenging your driving skills requires absolute trust in your automobile. To this end, the RSX has been designed with a high level of safety. In addition to its precision handling, our sports coupe features a powerful braking system and superb outward visibility to help you avoid problems. A reinforced steel body

acts as a shield in the event of a collision. While inside, there are dual-stage, dual-threshold front air bags, side air bags, 3-point seat belts, side-intrusion hip pads, a LATCH Child Safety Seat Anchor System, and a collapsible steering column to help protect you. Together, these features let you perform with confidence.



- ❶ In addition to the impressive stopping power of disc brakes on all four wheels, both Type S and Premium models feature a 3-channel Anti-Lock Braking System (ABS) to help the driver maintain steering control when braking hard on slippery surfaces.
- ❷ The rigid RSX body includes front and rear crumple zones, forming a protective shell around you. Steel crossbeams in the doors help protect passengers in a lateral collision.
- ❸ Inside the vehicle, there are 3-point seat belts at all positions that provide primary protection. Front seat belts are equipped with advanced dual-pretensioners that include load limiters which help reduce the forces that act on front seat occupants during a frontal collision.
- ❹ Driver and passenger front side air bags offer enhanced protection from side impacts. Sensors in the front passenger's seat prevent the air bag from deploying if a child or small adult is riding in it, or if the passenger is out of position.









YOU MAY NEVER TAKE A SHORTCUT AGAIN

The RSX is all about control. Beyond the throttle, brakes and steering, all the other controls are designed to be within quick and easy reach. Large, analogue gauges provide you with instant and accurate feedback and glow crimson for easy viewing at night. And an Automatic Climate Control System allows you to focus on driving instead of adjusting the temperature. For your convenience, there are power windows and a keyless entry feature. A breathtaking audio system also comes standard, providing hours of entertainment for the long way home.



❶ With 175 watts, the Acura/Bose® music system in the Type S delivers crystal clarity and power to spare. It includes 6 speakers, an in-dash 6 CD changer, and a cassette player for your favourite road tunes. ❷ A hefty Bose Richbass™ woofer resides within the Type S spare tire. This custom-designed speaker in its bass-reflex enclosure produces sound you can feel by increasing volume in the low frequency range. ❸ A good seat is crucial to performance driving, so the RSX front seats feature deep side and bottom bolsters to keep you in place during hard cornering manoeuvres. Sporty, perforated leather-trimmed seating and adjustable lumbar support to tailor the fit on the driver's side is standard in the RSX Premium and Type S. And standard in all models is a tilt steering column that lets the driver find the perfect driving position.



U.S. model shown.





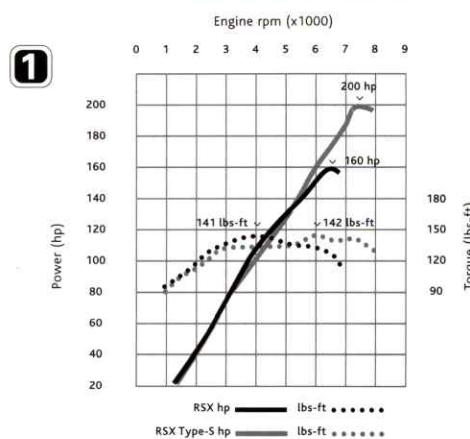
WE NEVER COULD SIT STILL

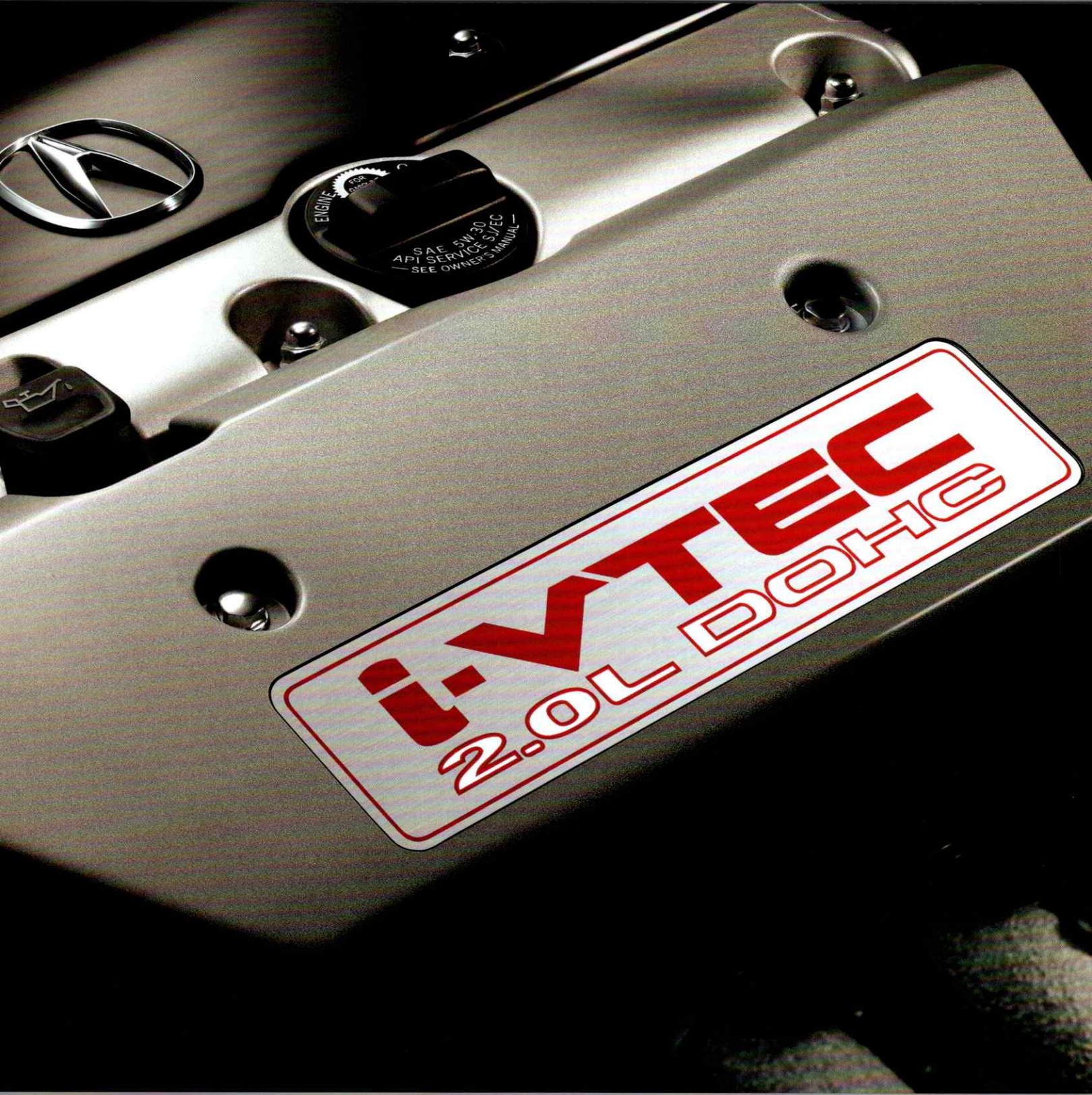
Innovation has always been on the fast track at Acura. That's why the RSX benefits from our extensive racing heritage. Perhaps the most breathtaking example of this is at our performance machine's heart. The RSX and Type S engines are precision instruments of power that produce 160 and 200 hp,

respectively. Both feature sturdy aluminum-alloy blocks and cylinder heads to reduce weight and help dissipate heat. The main bearing caps are made of a ferrous-carbon material that is cast directly into the alloy of the block for a higher level of stiffness. And both engines feature four valves per cylinder, dual overhead camshafts (DOHC), PGM-FI fuel injection, direct ignition, and the i-VTEC and VTC systems offering more flexible power delivery at the high and low end of the powerband. In keeping with its high performance mission, the RSX uses an exacting suspension. At the front, a state-of-the-art Toe Control-Link Independent Strut suspension greatly enhances cornering and stability. At the rear, a Reactive-Link Double-Wishbone system delivers quick, precise handling and a smooth ride. Firm springs and dampers, along with a remarkably rigid body, have also been incorporated to give you even greater responsiveness and road feel.

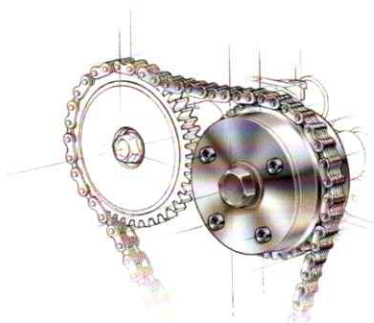


❶ The RSX produces 160 hp at 6500 rpm and 141 lbs-ft of torque at 4000 rpm. The Type S produces 200 hp at 7400 rpm and 142 lbs-ft of torque at 6000 rpm. Note the wide flat torque curves. Power is available at almost every engine speed. ❷ Called i-VTEC for its enhanced intelligence, the RSX engine provides two different cam profiles on the same camshaft. One profile allows more efficient air and fuel flow at lower rpm for quick response. As the speeds increase, a hydraulic-actuation system engages the second camshaft profile for optimum air and fuel flow at higher rpm and exceptional peak horsepower. The bottom line is usable power that is very linear throughout the rpm range. ❸ The i-VTEC engine includes Variable Timing Control (VTC) to help achieve ideal combustion on demand by controlling valve timing, lift, and overlap. The result is cutting-edge performance, efficiency, and low emissions. ❹ 4-wheel independent suspension optimizes each tire's contact patch on the road for more traction and outstanding handling stability.

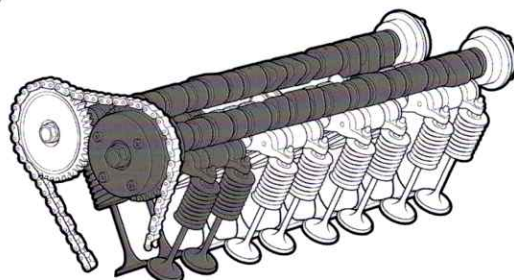




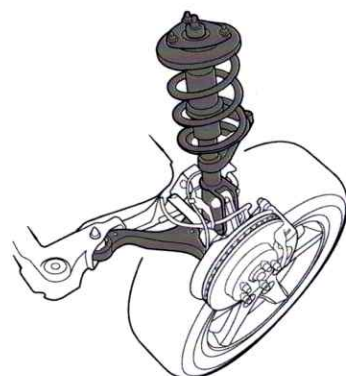
2



3



4



POWERTRAIN

Drivetrain	Front-wheel drive
Engine Type	2.0-litre, 16-valve, DOHC
Horsepower	160 hp @ 6500 rpm (RSX & Premium)
Torque	141 lbs.-ft. @ 4000 rpm (RSX & Premium)
Redline	6800 rpm (RSX & Premium)
Bore & Stroke	86 mm x 86 mm
Displacement	1998 cc
Compression Ratio	9.8:1 (RSX & Premium)
Fuel System	Programmed Fuel Injection (PGM-FI) with dual-stage intake manifold (RSX & Premium)
Valvetrain	4 valves per cylinder, chain-driven, dual overhead camshafts with i-VTEC™
Engine Block	Aluminum alloy with cast iron cylinder liners
Emission Control	Surpasses the stringent 2004 Tier-2 emission requirements
Ignition System	Electronic direct
Transmission	5-speed manual (RSX & Premium) 5-speed automatic Sequential SportShift™, Grade Logic Control and lockup torque converter (optional on RSX & Premium)

SUSPENSION/CHASSIS

Front Suspension	Toe Control-Link Independent Strut with coil springs
Rear Suspension	Reactive-Link double-wishbone with coil springs
Shock Absorbers	Gas-pressurized with progressive valve technology
Steering Type	Torque-sensitive, variable power-assisted rack-and-pinion
Stabilizer Bars	Front: 23.0 mm diameter (RSX & Premium) Rear: 18.0 mm diameter (RSX) 19.0 mm diameter (Premium & Type S)
Steering Wheel Turns, lock-to-lock	2.64
Turning Radius	5.7 m
Wheels	Steel, 15" x 6.0" JJ (RSX) Aluminum-alloy, 16" x 6.5" JJ (Premium)
Tires	All-Season P195/65 R15 89H (RSX) All-Season P205/55 R16 89V (Premium & Type S)
Braking System	Power-assisted, 4-wheel disc (RSX) Power-assisted, 4-wheel disc with anti-lock braking system (ABS) (Premium & Type S)
Front Discs	Ventilated, 262 mm diameter (RSX & Premium)
Rear Discs	260 mm diameter

FUEL ECONOMY

(2004 Data Shown)

Manual Transmission (L/100km)	City: 8.7 Highway: 6.5 (RSX & Premium)* City: 9.7 Highway: 6.9 (Type S)†
Automatic Transmission (L/100km)	City: 9.3 Highway: 6.4 (RSX & Premium)*
Recommended Fuel	Regular unleaded (RSX & Premium) Premium unleaded; 91 octane† (Type S)

*Use mileage for comparison purposes only. Your mileage may vary. See your Dealer for the 2004 Transport Canada data.
†Gasoline with an octane number lower than 91 may be used, with reduced performance.



The RSX Type S includes the following Performance Enhancements:

POWERTRAIN

Horsepower: 200 hp @ 7400 rpm
Torque: 142 lbs.-ft. @ 6000 rpm
Redline: 7900 rpm
Compression Ratio: 11.0:1
Fuel System: Programmed Fuel Injection (PGM-FI) with sport tuned intake manifold
Transmission: 6-speed manual close-ratio

SEATING & TRIM

Leather-wrapped 3-spoke steering wheel
Titanium-style shift knob
Sport seats with perforated leather-trim

EXTERIOR FEATURES

Sport type chrome exhaust tip

SUSPENSION/CHASSIS

Performance tuned suspension components	
Stabilizer Bars	Front: 24.2 mm diameter
	Rear: 19.0 mm diameter
Wheels: Dark finish aluminum alloy, 16" x 6.5" JJ	
Tires: All season P205/55 R16 89V	
Braking System:	
Power-assisted, 4-wheel disc with anti-lock braking system (ABS)	
Front Discs: Ventilated, 300 mm diameter	

SAFETY FEATURES

Anti-Lock Braking System (ABS) (Premium & Type S)
Driver and front passenger dual-stage, dual-threshold front airbags (SRS)
Driver and front passenger side airbag system (SRS) with front passenger Occupant Position Detection System (OPDS)
3-point (ALR) seat belts (front passenger, rear)†
3-point (ELR) seat belts†
Front seat-belt dual pretensioners
Remote keyless entry system with panic feature
Security and ECU immobilizer systems
LATCH Child Safety Seat Anchor System
Collapsible steering column

* (ALR) Automatic Locking Retractor
† (ELR) Emergency Locking Retractor

CAPACITIES

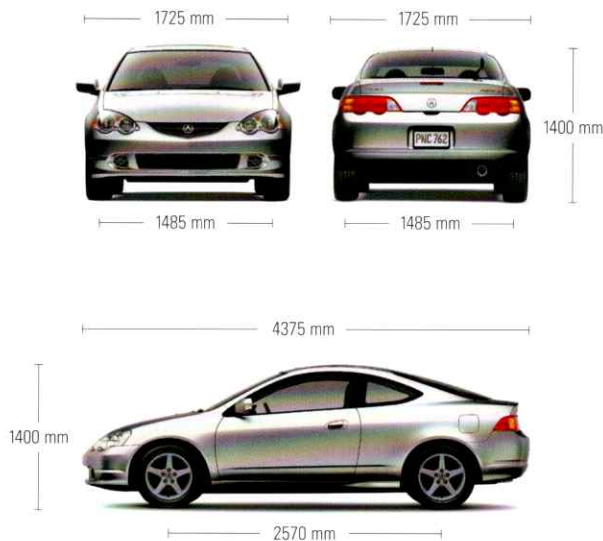
Engine Oil	4.2 litres refill capacity (RSX & Premium)
Cooling System	Manual Transmission: 6.4 litres Automatic Transmission: 6.7 litres
Washer Tank	4.5 litres
Fuel Tank	50 litres
Passenger Volume	2305 litres (RSX) 2243 litres (Premium & Type S)
Cargo Volume	504 litres

EXTERIOR DIMENSIONS

Wheelbase	2570 mm
Track, front	1485 mm
Track, rear	1485 mm
Length	4375 mm
Width	1725 mm
Height	1400 mm
Ground Clearance	(RSX & Premium) 152 mm (Type S) 149 mm
Curb Weight	Manual/Automatic (RSX) 1197/1232 kg Manual/Automatic (Premium) 1225/1260 kg Manual (Type S) 1257 kg
Weight Distribution, (%) front/rear	Manual Transmission 61/39 Automatic Transmission 62/38

INTERIOR DIMENSIONS

Front/Rear	Headroom	(RSX) 1002/866 mm (Premium & Type S) 960/866 mm
	Legroom	1094/742 mm
	Hiproom	1297/1174 mm
	Shoulder Room	1337/1303 mm



ACCESSORIES

Personalize your Acura RSX with Genuine Acura Accessories.
Ask your Dealer for additional information.

16" Alloy wheels	Front, rear and side skirts
17" Alloy wheels	Full nose mask
Aluminum shift knob	Gold plated emblem kit
All-weather floor mats (front only)	Gold plated Type S emblem
Cassette player	Gold plated exhaust finisher
CD changer	Moonroof wind deflector
CD changer magazine	Hood edge protector
Fog lights	Rear splash guards
Cargo net	Rear wing spoiler
Locking wheel nuts	Rear wing spoiler – high style
Door visor kit	Titanium panel kit

EXTERIOR FEATURES

	RSX	PREMIUM	TYPE S
Wheels	Steel wheel with covers		
	Aluminum alloy		
	Dark finish aluminum alloy		
Front chin spoiler and side sills	Black		
	Body-coloured		
Body-coloured bumpers			
Body-coloured door handles			
Folding body-coloured door mirrors			
Front splash guards			
Chrome exhaust tip			
Heat-absorbing green tinted glass			
Integrated rear glass antenna			
Rear window defroster with timer			
Rear window wiper/washer			

SEATING AND TRIM

	RSX	PREMIUM	TYPE S
Fabric interior			
Perforated leather-trimmed interior			
Leather-wrapped 3-spoke steering wheel			
Deeply bolstered front sport seats with integrated headrests			
Tilt/height adjustable driver's seat			
Adjustable driver's lumbar support			
Heated front seats			
Centre console with storage			
50/50 split fold-down rear seatback			
Rear cargo area cover			
Carpeted floor mats			

COMFORT AND CONVENIENCE

	RSX	PREMIUM	TYPE S
Automatic Climate Control System			
Micron Air Filtration System			
Acura Sound System with AM/FM stereo, in-dash CD player and 4 speakers		6 speakers	
Acura/Bose® Sound System with AM/FM stereo/cassette, in-dash 6 CD changer, Richbass™ subwoofer and 6 speakers			
Cruise control			
Power-operated moonroof with tilt feature, privacy glass and sliding shade			
Power windows with driver's one-touch up/down feature			
Power door locks			
Power-operated heated door mirrors			
Adjustable steering column			
Front door storage compartments			
Front dual beverage holder			
Overhead map lights			
Driver's vanity mirror with cover			
Passenger's vanity mirror with cover			
Digital quartz clock			
Windshield wipers with variable intermittent feature			
Remote fuel-filler-door release			

• = Standard

RSX

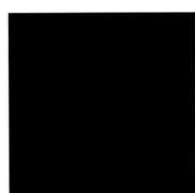
EXTERIOR	INTERIOR
Satin Silver Metallic	Ebony Fabric
Nighthawk Black Pearl	Ebony Fabric
Milano Red	Ebony Fabric
Desert Silver Metallic	Titanium Fabric
Eternal Blue Pearl	Ebony Fabric

Premium

EXTERIOR	INTERIOR
Satin Silver Metallic	Ebony Leather
Nighthawk Black Pearl	Ebony Leather
Milano Red	Ebony Leather
Desert Silver Metallic	Titanium Leather
Eternal Blue Pearl	Ebony Leather

Type S

EXTERIOR	INTERIOR
Satin Silver Metallic	Ebony Leather
Nighthawk Black Pearl	Ebony Leather
Arctic Blue Pearl	Ebony Leather
Premium White Pearl	Ebony Leather



Nighthawk Black Pearl



Satin Silver Metallic



Milano Red



Desert Silver Metallic



Arctic Blue Pearl



Premium White Pearl



Eternal Blue Pearl



Titanium Fabric
(RSX)



Ebony Fabric
(RSX)



Titanium Leather
(Premium)



Ebony Leather
(Premium & Type S)

THE ACURA EXPERIENCE

At Acura, our commitment to excellence goes well beyond engineering our vehicles. We're entirely as committed to making your ownership experience a



rewarding one. So every new Acura includes:

- a complimentary tank of gas at time of delivery
- First two scheduled maintenance procedures
- 24-hour Roadside Assistance for the first

four years of ownership which includes our Dispatch Emergency Roadside Service, Emergency Lockout Service, Traffic Accident Services and more. See your Acura dealer for details.

ACURA PLUS

As a new Acura owner, you can help to prolong your worry-free ownership experience by purchasing additional coverage. Just choose from our flexible selection of Mechanical Coverage that extends up to 7 years or 160,000-km, whichever comes first.

You can also extend your Roadside Assistance. Ask your Acura dealer for full details.

WARRANTIES

Your new Acura vehicle includes the following warranties:

- Major component – 5-year/100,000-km limited warranty
- Vehicle – 3-year/60,000-km distributors limited warranty
- Rust Perforation – 5-year unlimited-distance warranty
- Surface Corrosion – 3-year unlimited-distance warranty
- Accessories – 3-year/60,000-km limited warranty

(when installed by an authorized Acura dealer at time of new vehicle delivery). Regular maintenance items and parts are subject to normal wear and replacement, and are not covered by warranty. Certain other items are excluded, and certain conditions apply. See your Acura dealer for complete details.

LEASING AND FINANCING

We offer an array of options to make owning an Acura even easier. Ask your Acura dealer for complete details on: Acura Leadership Leasing,* Acura Future Value Financing* and Conventional Financing.*

*A genuine service of Honda Canada Finance Inc. Conditions, restrictions and pre-payment requirements might apply O.A.C. *Acura Future Value Financing* does not apply in the province of Quebec.

Specifications, features, illustrations and equipment shown in this catalogue are based upon the latest available information at the time of publication. *Remember Your Seatbelts. It's a Simple Fact of Life. Although descriptions are believed to be correct, accuracy cannot be guaranteed. Honda Canada Inc. reserves the right to make changes at any time, without notice or obligation, in colours, specifications, accessories, materials and models. Some vehicles are shown with optional equipment. Formula One racing photo supplied by Honda F1 Press office. Some vehicles shown are U.S. models, Canadian specifications may vary. ®Bose is a registered trademark of Bose Corporation. Richbass™ is a trademark of Bose Corporation. Acura, a division of Honda Canada Inc., 715 Milner Avenue, Toronto, Ontario, Canada M1B 2K8. 1-888-9-ACURA-9. www.acura.ca. Acura, RSX, i-VTEC, VTEC, Sequential SportShift and Variable Timing Control (VTC) are registered trademarks of Honda Motor Co. Ltd.





ACURA

www.acura.ca