



EXHILARATION RUNS IN THE FAMILY.



FROM PERFORMANCE COUPES AND SEDANS TO THE MDX SPORT-UTILITY

VEHICLE AND THE NSX EXOTIC SPORTS CAR, ACURA BUILDS LUXURY

AUTOMOBILES FOR PEOPLE WHO VIEW DRIVING AS AN END IN ITSELF.

EACH MODEL FEATURES REFLEXES THAT SEEM LIKE AN EXTENSION OF

YOUR OWN, RACING INSPIRED ENGINES THAT EPITOMIZE POWER AND

EFFICIENCY, AND STATE-OF-THE-ART INTERIORS THAT AT ONCE REWARD

AND ENERGIZE THE DRIVER. STRONGER, LIGHTER ALLOYS AND EXOTIC

MATERIALS ALLOW US TO TRANSLATE WEIGHT REDUCTION DIRECTLY INTO

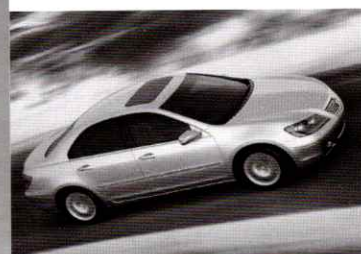
PERFORMANCE. NEW SAFETY FEATURES THAT ARE AS CUTTING EDGE AS OUR

PERFORMANCE TECHNOLOGY ENCOURAGE AN APPRECIATION OF EVERYTHING

THESE VEHICLES HAVE TO OFFER, WHILE ENJOYING AN UNMATCHED LEVEL

OF CONFIDENCE IN THEIR ABILITY. AT ACURA OUR PASSION FOR CRAFTING

AUTOMOBILES IS SURPASSED ONLY BY YOUR PASSION FOR DRIVING THEM.



RL



MDX



TL



TSX



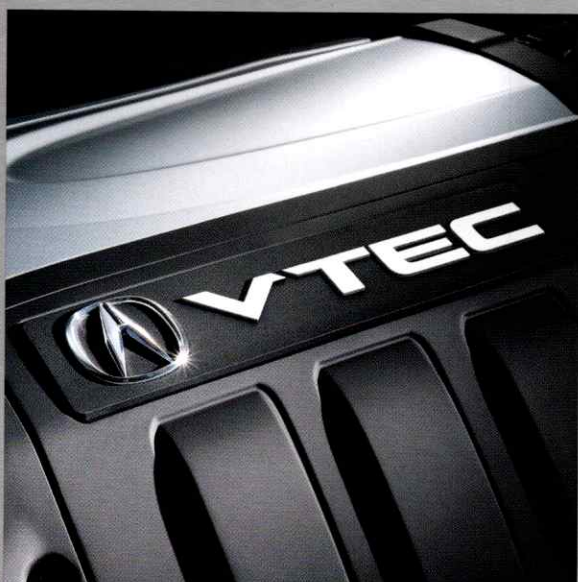
EL



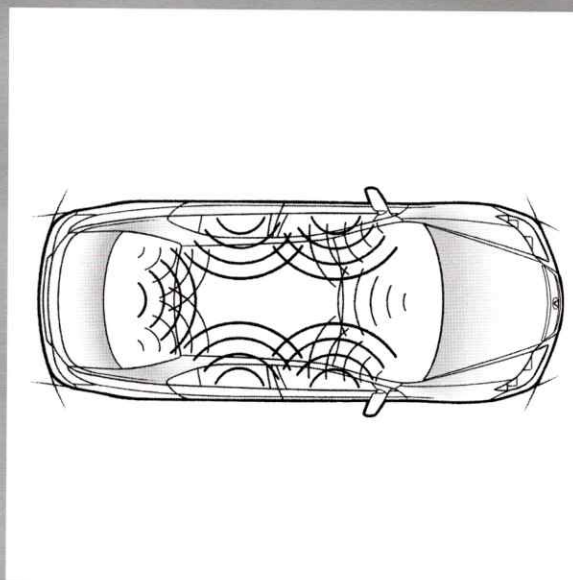
RSX



NSX



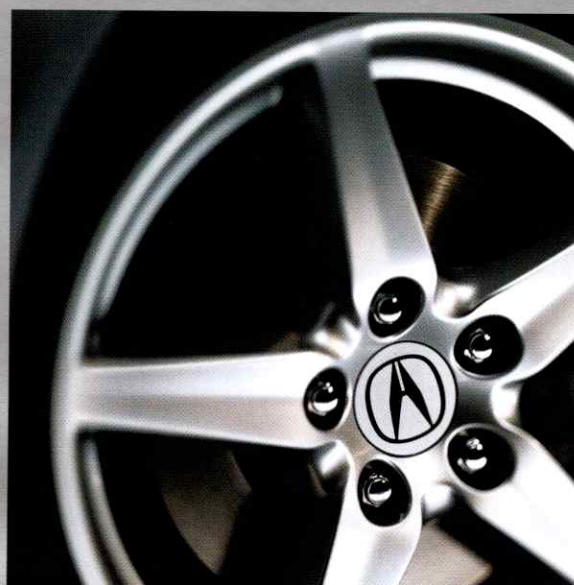
VTEC® and i-VTEC® engines provide two distinct cam profiles on the intake camshaft, one for use at low rpms to enhance low-end torque, and one that enables high-speed efficiency and horsepower production at higher engine speeds.



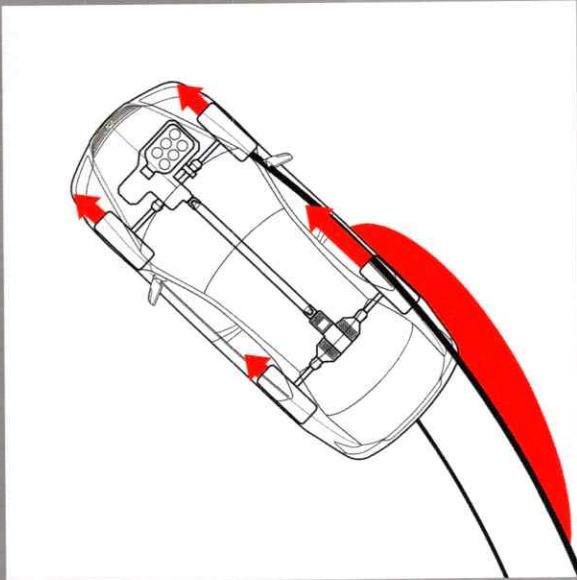
The true discrete multi-channel Surround Sound System with DVD-Audio, DTS®, and 6-disc CD changer (standard on the TL and RL) can achieve levels of audio detail previously unattainable, with awe-inspiring power and clarity. (RL shown)



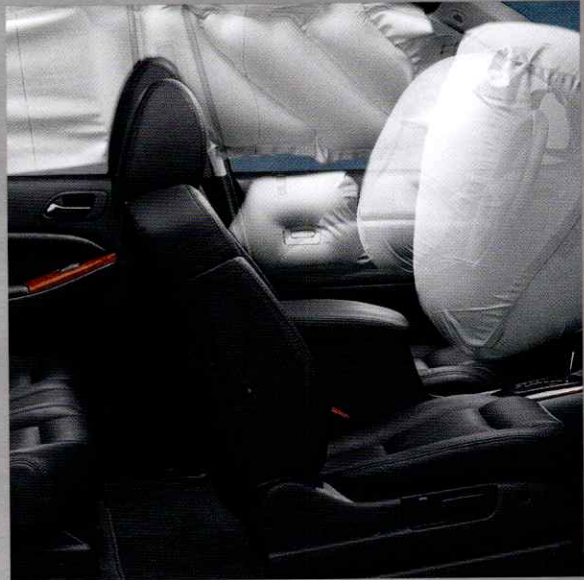
The TSX, TL, MDX, and RL feature an available Acura Navigation System¹ with bilingual Voice Recognition™. The TL, MDX, and RL systems are graced with a HandsFreeLink™ wireless telephone interface featuring Bluetooth® technology.



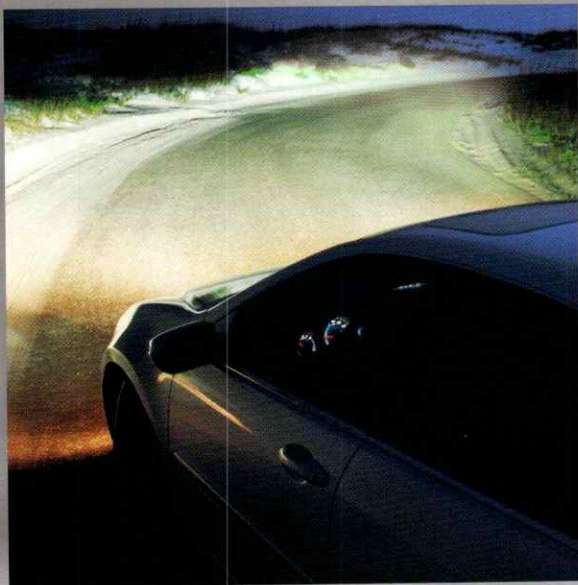
From precision forged alloy wheels to the unique new paint process of the RL, where up to 14 technicians wet-sand the body by hand and two applications of clear coat are laid on, you will find unparalleled craftsmanship in every Acura.



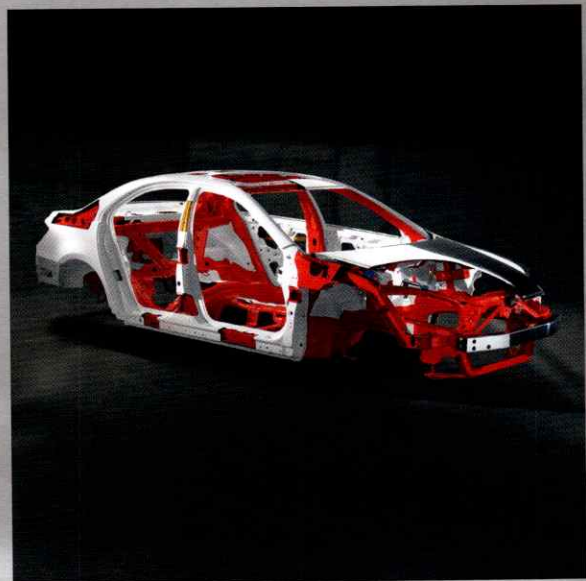
Through Super Handling All-Wheel Drive™ the RL enables engine torque distribution between the front and rear wheels, up to 70% either way. When cornering, all the engine power coming to the rear can be directed to the outside wheel.



Standard on every Acura, dual-stage, dual threshold front airbags' with a front passenger Occupant Position Detection System (OPDS) deploy at two rates and thresholds, depending on impact severity and seat-belt usage.



Designed to help you see in the direction you're turning at night, the Active Front Lighting System (AFS) on the RL allows each headlight to swivel up to 20 degrees to illuminate the turn and allow you to view what lies ahead.



Through an innovative new front-end frame structure design, the Advanced Compatibility Engineering™ (ACE™) on the RL reduces the concentrated force of a frontal impact by dispersing and absorbing crash energy over a larger area.



RL

Performance-luxury finds a new flagship. The RL is no less than a redefinition of how an automobile can serve its driver. Set free, the RL exhibits stunning athleticism. Its 300-hp VTEC engine is the most muscular ever produced by Acura for the road. Power flows out to all four wheels through a masterpiece of engineering called Super Handling All-Wheel Drive™ (SH-AWD™), which can vary distribution of engine torque between the front and rear wheels, up to 70% either way. Moreover, SH-AWD allows the RL to do something no other car can do – when you drive into a corner, engine power coming to the rear is directed to the outside wheel, and that one wheel is mechanically accelerated to actually generate additional turning force. Instantly and seamlessly, you experience dramatically increased cornering, turning precision, and steering neutrality. With improvements ranging from the carbon-fiber reinforced driveshaft to magnesium valve covers, not an inch of the redesigned RL has been overlooked. Inside, a personalized world of amenities surround you. In addition to comfortable contours and deep bolsters, your performance seating comes with active ventilation. An Acura Navigation System¹ with bilingual Voice Recognition™ can guide you to virtually anywhere in continental North America. And an Acura/Bose® Premium Sound System represents the latest step in true discrete multi-channel surround sound. Of course, the new Acura RL combines impressive strength with sophisticated safety engineering. You'll find front, side, and side curtain airbags, energy-absorbing crumple zones, even headlights that swivel to better illuminate the path ahead. No wonder the RL is our definitive performance-luxury flagship.





MDX

Refinement for the roughest terrain. In a seeming sea of SUVs, the MDX stands out with uncompromising concepts of sport and utility. At the heart of the MDX is a 3.5 litre VTEC engine that delivers 265 horsepower and a heart pounding surge of adrenaline. Combined with Acura's ingenious VTM®-4 four-wheel-drive system, it is as confident on the pavement as it is on the mountain pass. Then there's the unprecedented list of safety features. You'll find the MDX offers everything from Vehicle Stability Assist (VSA®) with traction control to an airbag deployment system so sophisticated that it can recognize and react to three different rollover scenarios. Inside, the MDX welcomes occupants with a luxurious leather interior that can be configured to comfortably seat seven, or accommodate a massive amount of cargo. Within this interior oasis, you'll also find a generous array of sophisticated amenities. A power-operated moonroof, rain-sensing windshield wipers, a front and rear synchronized Automatic Climate Control System and an Acura/Bose® Sound System are but a few of the standard features. If you're searching to find where rugged versatility meet luxurious refinement, the MDX is on a road all its own.





TL

Discover the power of adrenaline. The Acura fervor for ultra high performance and advanced technology is given a brilliant voice with the TL. Its 270 hp VTEC engine and Formula One-inspired suspension deliver intense acceleration and road-gripping precision. Standard on the TL and TL NAVI Package is the versatile-speed Sequential SportShift™ automatic transmission. For the purist, there's the Dynamic and Dynamic NAVI Packages, offering the control and precision of a 6-speed close-ratio manual gearbox and summer high performance tires² with lightweight aluminum alloy wheels. The Acura TL is equally adept at preparing you for the unexpected, with the most advanced safety features, from 4-wheel disc brakes with ABS to a complete array of front and side curtain airbags. Within the stylish, leather-trimmed cockpit, you'll enjoy an unprecedented complement of rewarding amenities such as the available Acura Navigation System¹. The perforated leather-trimmed seats offer deep bolsters for support during spirited driving. And the driver's seat enables you to achieve your ideal position with 8-way power adjustment. The TL also offers the world's first true discrete multi-channel surround sound system as standard equipment. Clearly the ride in a TL is meant to sound as breathtaking as it feels.





TSX

Reach instant escape velocity. The 2005 TSX is a powerful, lavishly equipped performance machine that writes its own sports-sedan rulebook. Even the most experienced driver will discover true exhilaration via the 200-horsepower 2.4 litre i-VTEC engine, coupled with a choice of 6-speed close-ratio manual transmission or 5-speed Sequential SportShift™ automatic. A 4-wheel independent double wishbone / multi-link rear suspension keeps the wheels in precise location during cornering for razor-sharp handling. And Vehicle Stability Assist (VSA®) with traction control helps restore the car to its intended path if the system senses a skid. Once you've enjoyed the TSX from the inside, you may never want to arrive. The TSX features a 360-watt, 8-speaker audio system, a dual-zone Automatic Climate Control System and available Acura Navigation System¹. Even the seating speaks performance with an 8-way power driver's seat. Passenger protection is derived from an array of sophisticated airbags including front, side, and side curtain airbags. Xenon High-Intensity Discharge (HID) headlights throw a long, focused beam and 4-wheel disc brakes with ABS help retain steering control during hard braking. Prepare yourself for a very gripping ride.

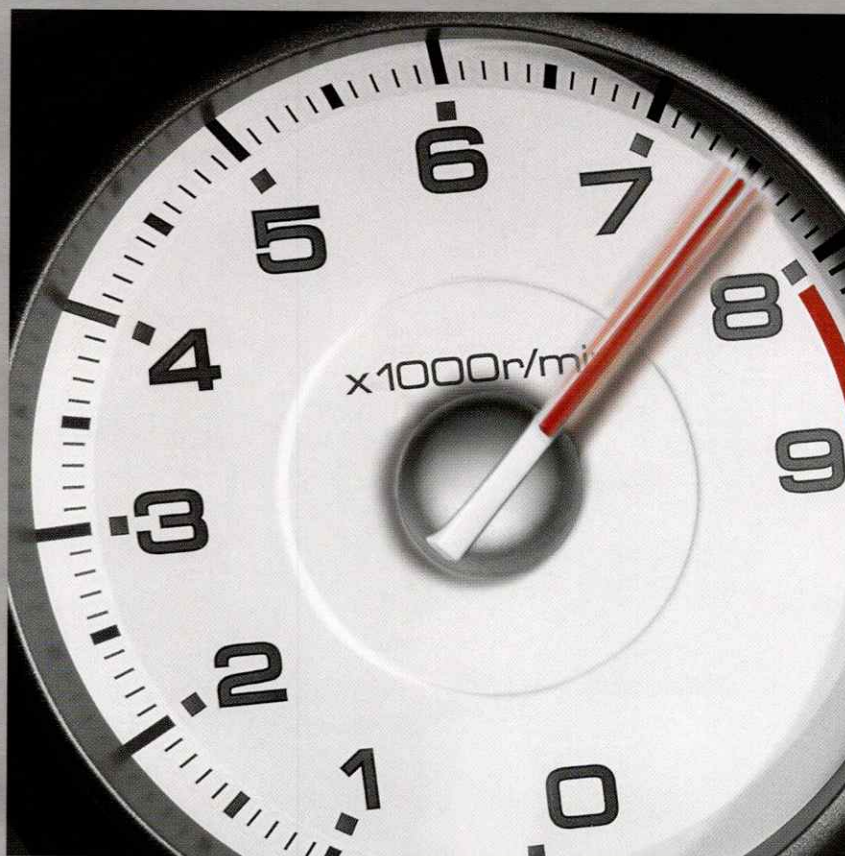




EL

Style at its most personal. With its refined look and feel, the 2005 EL is a worthy entry into the Acura family. We've taken the liberty of offering personal luxury in two different trim levels: the sporty Touring model and the lavishly appointed Premium. Both present a level of power and precision to connect you flawlessly with the road. It begins with an outstanding VTEC engine that serves up abundant low-end torque and plenty of high rpm power, while also providing impressive fuel economy. Equally impressive, our sedan gives you masterful command in any situation, thanks to the handling prowess of its 4-wheel independent suspension, coupled with the precision of front and rear stabilizer bars. Even the progressive valve shock absorbers of the EL have been intricately tuned for added driving excitement. Finishing the handling story are disc brakes at all four wheels that provide powerful braking, aided by a standard Anti-Lock Braking System (ABS). And of course, every EL is equipped with dual-stage, dual-threshold front airbags and side-impact air bags for an added layer of protection.





RSX

Luckily the world is curved. Acura's reputation for building exceptional sports coupes has never been more apparent than in the RSX. At its heart is an i-VTEC engine boasting 160 peak horsepower, with 210-hp in the heart pounding Type S. All coupled to some of the truest shifting gearboxes around. Add to that an exacting suspension and the RSX easily expands the performance envelope. Challenging your driving skills however, requires absolute trust in your automobile. To this end, the RSX has been designed with a very high level of safety. In addition to its precise handling, this sports coupe features a powerful 4-wheel disc brake system. As well, a reinforced steel body acts as a shield, while inside, there are dual-stage, dual-threshold front airbags and a front side air bag system. Of course the RSX wouldn't qualify as an Acura if it didn't come extensively equipped with features that make life on the road a renewable pleasure. You'll find premium items like an Automatic Climate Control System, performance seating, and audio systems to please the most discerning audiophile. With the new RSX, the art of driving may never be the same again.





NSX

The link between thought and reaction. It is a true mid-engined supercar, injected with undiluted doses of racing DNA. Sculpted in lightweight aluminum and appointed in the finest materials, the handcrafted 2005 NSX rewards a select few with unparalleled excellence. The 290-hp VTEC engine is hand-assembled by a single master technician to the strictest tolerances. Lightweight titanium connecting rods allow it to react instantly and rev freely to its 8000-rpm redline. The short-throw, close-ratio 6-speed gearbox alone, is capable of providing a world of joy. Add to this the near perfect front-to-rear balance and inspired suspension system, and the NSX turns every twist of the road into a new and exquisite pleasure. Inside the cockpit of the NSX, the first touch of glove-soft leather makes it obvious that this is the work of artisans. Every accoutrement is perfectly placed, each gauge precisely framed. The guiding principle is clearly the satisfaction of the driver. But of all the remarkable discoveries awaiting those fortunate enough to own an NSX, one overrides all others: this machine is no mere sports-exotic. This is an automobile with the ability and poise to actually make you a better driver.



HIGHLIGHTS

> RL



■ POWERTRAIN

Drivetrain > Super Handling All-Wheel-Drive™ (SH-AWD™)

Engine Type > 3.5 litre, 24-valve, SOHC, V6

Horsepower > 300 hp @ 6200 rpm

Torque > 260 lbs-ft @ 5000 rpm

Redline > 6800 rpm

Throttle System > Drive-by-Wire Throttle System™

Valvetrain > 4 valves per cylinder, belt-driven, single overhead camshaft with VTEC®

Transmission > 5-speed automatic Sequential SportShift™, with paddle shifters and Grade Logic Control

■ SUSPENSION/CHASSIS

Suspension > 4-wheel independent double-wishbone with rear multi-link

Wheels > Aluminum-alloy, 17" x 8.0" JJ

Tires > All-Season 245/50 R17 98V

Braking System > Power-assisted, 4-wheel disc with anti-lock braking system (ABS)

■ AMENITIES

Advanced Compatibility Engineering™ (ACE™)

Electronic Brake Distribution (EBD)

Vehicle Stability Assist (VSA®) with traction control

Side curtain airbags, dual front and side airbags (SRS)

Tire Pressure Monitoring System (TPMS)

LED taillights, brake lights, and mirror integrated directional signals

Xenon High-Intensity Discharge (HID) headlights

Active Front Lighting System (AFS)

Headlight washer system

Leather trimmed interior with Leather-wrapped steering wheel and shift knob

8-way power-adjustable driver's seat with power lumbar support and two-position memory control

4-way power-adjustable passenger's seat

Ventilated front seats, heating and cooling

Power rear-seat headrest retractor

Dual-zone, dual mode Automatic Climate Control System with 3D solar angle sensor

Acura/Bose® Premium 10 speaker Surround Sound System with DVD-Audio, DTS® and 6-disc CD changer, AM/FM tuner

Acura Navigation System¹ with bilingual Voice Recognition™ and steering wheel mounted controls

Steering wheel-mounted audio and cruise controls

HandsFreeLink™ wireless telephone interface with steering wheel mounted controls

Active Noise Cancellation™ system (ANC™)

Keyless Access System with driver recognition

Power-operated moonroof with tilt feature, privacy glass and sliding shade

Power-operated heated door mirrors with 2-position memory

Power rear and manual rear side sunshades

Multi-Info Display

HomeLink® system*

Maintenance Minder

Programmable feature customization

*Can be programmed with codes of up to three remote-control devices. (eg. garage-door opener, home security system, etc.) Additional control devices not provided by Acura; may be required.

> MDX



■ POWERTRAIN

Drivetrain > 4-wheel drive with Variable Torque Management System (VTM®-4)

Engine Type > 3.5 litre, 24-valve, SOHC, V6

Horsepower > 265 hp @ 5800 rpm

Torque > 253 lbs-ft @ 3500-5000 rpm

Redline > 6300 rpm

Throttle System > Drive-by-Wire Throttle System™

Valvetrain > 4 valves per cylinder, belt-driven, single overhead camshaft with VTEC®

Transmission > 5-speed automatic, Grade Logic Control and lock-up torque converter

■ SUSPENSION/CHASSIS

Suspension > 4-wheel independent with rear multi-link

Wheels > Aluminum-alloy, 17" x 6.5" JJ

Tires > All-Season 235/65 R17

Braking System > Power-assisted, 4-wheel disc, with 4-channel anti-lock braking system (ABS)

■ AMENITIES

Electronic Brake Distribution (EBD)

Vehicle Stability Assist (VSA®) with traction control

Side curtain airbags, dual front and side airbags (SRS)

Tire Pressure Monitoring System (TPMS)

Projector beam headlights

Leather trimmed interior with Leather-wrapped steering wheel and shift knob

8-way power-adjustable driver's seat with power lumbar support and two-position memory control

8-way power-adjustable passenger's seat

Front and rear synchronized Automatic Climate Control System with Micron Air Filtration System

Acura/Bose® Surround Sound System with AM/FM stereo, in-dash 6-CD changer, 7 speakers, and a 10" subwoofer

Steering wheel-mounted audio and cruise controls

HandsFreeLink™ wireless telephone interface with steering wheel mounted controls

Power-operated moonroof with tilt feature, privacy glass and sliding shade

Power-operated heated door mirrors with passenger side tilt feature when in reverse

Trip Computer with compass, exterior temperature indicator, information on elapsed distance and time, gas mileage and remaining fuel/distance calculator

Trailer hitch pre-wire

Roof rack with crossbars

Front, centre console and rear accessory sockets

HomeLink® system*

Rain-sensing windshield wipers with speed-sensitive variable intermittent feature

*Can be programmed with codes of up to three remote-control devices. (eg. garage-door opener, home security system, etc.) Additional control devices not provided by Acura; may be required.

■ TECH PACKAGE (Available)

Acura Navigation System¹ with bilingual Voice Recognition™ and steering wheel mounted controls

Rearview camera when in reverse

Acura DVD Rear Entertainment System with 7" view screen

Wireless headphones

> TL



■ POWERTRAIN

Drivetrain > Front-wheel drive

Engine Type > 3.2 litre, 24-valve, SOHC, V6

Horsepower > 270 hp @ 6200 rpm

Torque > 238 lbs-ft @ 5000 rpm

Redline > 6800 rpm

Throttle System > Drive-by-Wire Throttle System™

Valvetrain > 4 valves per cylinder, belt-driven, single overhead camshaft with VTEC®

Transmission > 5-speed automatic Sequential SportShift™, Grade Logic Control and lock-up torque converter (TL & NAVI Package)

> 6-speed manual close-ratio with Limited Slip Differential (Dynamic & Dynamic NAVI Packages)

■ SUSPENSION/CHASSIS

Suspension > 4-wheel independent double-wishbone with rear multi-link

Wheels > Aluminum-alloy, 17" x 8.0" JJ

Tires > All-Season 235/45 R17 W (TL & NAVI Package)

> 235/45 R17 W, Summer High Performance² (Dynamic & Dynamic NAVI Packages)

Braking System > Power-assisted, 4-wheel disc with anti-lock braking system (ABS)

■ AMENITIES

Electronic Brake Distribution (EBD)

Vehicle Stability Assist (VSA®) with traction control

Side curtain airbags, dual front and side airbags (SRS)

Xenon High-Intensity Discharge (HID) headlights

Leather trimmed interior with Leather-wrapped steering wheel and shift knob

8-way power-adjustable driver's seat with power lumbar support and two-position memory control

4-way power-adjustable passenger's seat

Dual-zone, dual-mode, Automatic Climate Control System with Micron Air Filtration System

Acura/ELS Surround™ Premium 8 speaker Sound System with DVD-Audio, DTS® and 6-disc CD changer, AM/FM Tuner and Dolby® cassette

Steering wheel-mounted audio and cruise controls

HandsFreeLink™ wireless telephone interface with steering wheel mounted controls

■ DYNAMIC PACKAGE* (Available)

6-speed close-ratio manual transmission with Limited Slip Differential

Brembo® 4-piston front brake calipers

Tires: 235/45 R17 W, Summer High Performance²

Stabilizer Bars Front +2 mm diameter (27.0 mm)

 Rear +3 mm diameter (20.0 mm)

■ NAVI PACKAGE* (Available)

Acura Navigation System¹ with bilingual Voice Recognition™ and steering wheel mounted controls

Voice activated climate and audio controls

3D solar sensor for climate control system

[†]Optional Dynamic and NAVI packages available separately or in combination with each other. See dealer for details

> TSX



■ POWERTRAIN

Drivetrain > Front-wheel drive

Engine Type > 2.4 litre, 16-valve, DOHC, 4-cylinder

Horsepower > 200 hp @ 6800 rpm

Torque > 166 lbs-ft @ 4500 rpm

Redline > 7100 rpm

Throttle System > Drive-by-Wire Throttle System™

Valvetrain > 4 valves per cylinder, chain-driven, dual overhead camshafts with i-VTEC®

Transmission > 6-speed manual close-ratio with magnesium alloy case

> 5-speed automatic Sequential SportShift™, Grade Logic Control and lockup torque converter

■ SUSPENSION/CHASSIS

Suspension > 4-wheel independent double-wishbone with rear multi-link

Wheels > Aluminum-alloy, 17" x 7.0" JJ

Tires > All-Season 215/50 R17 93V

Braking System > Power-assisted, 4-wheel disc with anti-lock braking system (ABS)

■ AMENITIES

Vehicle Stability Assist (VSA®) with traction control

Side curtain airbags, dual front and side airbags (SRS)

Xenon High-Intensity Discharge (HID) headlights

Leather trimmed interior with Leather-wrapped steering wheel and shift knob

8-way power-adjustable driver's seat with lumbar support

Tilt and telescoping steering wheel column

4-way power-adjustable passenger's seat

Dual-zone, dual-mode, Automatic Climate Control System with Micron Air Filtration System

360-watt Acura Premium Sound System with AM/FM stereo, in-dash 6-CD changer and 8 speakers

Illuminated steering wheel-mounted audio and cruise controls

Power-operated moonroof with tilt feature, privacy glass and sliding shade

Keyless entry system with remote-linked windows down

Heated front seats

Centre console armrest with storage

HomeLink® system*

LED illuminated instruments

Exterior temperature indicator

Deeply bolstered front sport seats

60/40 split fold-down rear seatback

Rear heater ducts

Dual-outlet exhaust

Power operated, body-coloured, heated door mirrors with integrated turn signal

*Can be programmed with codes of up to three remote-control devices. (eg. garage-door opener, home security system, etc.) Additional control devices not provided by Acura; may be required.

■ NAVI PACKAGE (Available)

Acura Navigation System¹ with bilingual Voice Recognition™ and steering wheel mounted controls

Voice activated climate and audio controls

> EL



■ POWERTRAIN

Drivetrain > Front-wheel drive

Engine Type > 1.7 litre, 16-valve, SOHC, 4-cylinder

Horsepower > 127 hp @ 6300 rpm

Torque > 114 lbs.-ft. @ 4800 rpm

Valvetrain > 4 valves per cylinder, belt-driven, single overhead camshaft with VTEC®

Transmission > 5-speed manual (standard)

> 4-speed automatic, Grade Logic Control
and lockup torque converter (optional)

■ SUSPENSION/CHASSIS

Front Suspension > Toe Control-Link Independent Strut with coil springs

Rear Suspension > Independent double-wishbone with coil springs

Wheels > Aluminum-alloy, 15" x 6.0" JJ

Tires > All-Season 195/60 R15

Braking System > Power-assisted, 4-wheel disc with anti-lock braking system (ABS)

■ AMENITIES

Electronic Brake Distribution (EBD)

Dual front and side airbags (SRS)

Perforated leather trimmed interior (Premium)

Fabric interior (Touring)

Leather-wrapped steering wheel and shift knob (SMT)

Manual height adjustable driver's seat

Heated front seats (Premium)

Automatic Climate Control System with Micron Air Filtration System

CFC-Free air conditioning

Acura Sound System with AM/FM stereo, in-dash CD player and 6 speakers

Theft-deterrent system with electronic immobilizer

Steering wheel-mounted cruise control

Power windows with driver's one-touch up/down feature

Driver and front passenger vanity mirrors

Power-operated moonroof with tilt feature, privacy glass and sliding shade

Power heated door mirrors

Remote keyless entry system with panic feature and trunk release

Fog lights

Indigo wood print trim (Touring)

Brown wood print trim (Premium)

60/40 split fold-down rear seatback

Tachometer

Windshield wipers with variable intermittent feature

Rear heater ducts

Child-proof rear door locks

LATCH Child Safety Seat Anchor System

Integrated rear glass antenna

7-spoke alloy wheels (Touring)

15-spoke alloy wheels (Premium)

Centre console armrest with storage

Time delayed fading interior lights

Passenger seatback pocket

> RSX



■ POWERTRAIN

Drivetrain > Front-wheel drive

Engine Type > 2.0-litre, 16-valve, DOHC, 4-cylinder

Horsepower > 160 hp @ 6500 rpm (RSX & Premium)

> 210 hp @ 7800 rpm (Type S)

Torque > 141 lbs.-ft. @ 4000 rpm (RSX & Premium)

> 143 lbs.-ft. @ 7000 rpm (Type S)

Redline > 6800 rpm (RSX & Premium)

> 8300 rpm (Type S)

Valvetrain > 4 valves per cylinder, chain-driven, dual overhead camshafts with i-VTEC®

Transmission > 5-speed manual (RSX & Premium)

> 5-speed automatic Sequential SportShift™, Grade Logic Control and
lockup torque converter (optional on RSX & Premium)

> 6-speed manual close-ratio (Type S)

■ SUSPENSION/CHASSIS

Front Suspension > Toe Control-Link Independent Strut with coil springs

Rear Suspension > Reactive-Link double-wishbone with coil springs

Wheels > Steel, 15" x 6.0" JJ (RSX)

> Aluminum-alloy, 16" x 6.5" JJ (Premium)

> Aluminum-alloy, 17" x 7.0" JJ (Type S)

Tires > All-Season 195/65 R15 89H (RSX)

> All-Season 205/55 R16 89V (Premium)

> All-Season 215/45 R17 87V (Type S)

Braking System > Power-assisted, 4-wheel disc with anti-lock braking system (ABS)

■ AMENITIES

Dual front and side airbags (SRS)

Leather trimmed interior (Premium Leather & Type S)

Heated front seats (Premium Leather & Type S)

Automatic Climate Control System

Acura Sound System with AM/FM stereo and in-dash CD player

Acura/Bose® Sound System with AM/FM stereo/cassette, in-dash 6 CD changer,
Richbass™ subwoofer and 6 speakers (Type S)

Power-operated moonroof with tilt feature,
privacy glass and sliding shade (Premium, Type S)

Remote keyless entry system with panic feature

Security and ECU immobilizer systems

Black front chin spoiler (RSX, Premium)

Body-coloured front chin spoiler (Type S)

Black side sills (RSX)

Body-coloured side sills (Premium, Type S)

Body-coloured rear lip spoiler (Type S)

Chrome exhaust tip (Type S)

Deeply bolstered front sport seats

50/50 split fold-down rear seatback

Steering wheel mounted cruise control

Power windows with driver's one-touch up/down feature

Power-operated heated door mirrors

Remote fuel-filler-door release

> NSX



■ POWERTRAIN

Drivetrain > Transverse mid-engine / rear-wheel drive

Engine Type > 3.2 litre, 24-valve, DOHC, V6

Horsepower > 290 @ 7100 rpm

Torque > 224 lbs-ft @ 5500 rpm

Redline > 8000 rpm

Throttle System > Drive-by-Wire Throttle System™

Valvetrain > 4 valves per cylinder, double overhead camshafts with VTEC®

Transmission > Close-ratio 6-speed manual

■ SUSPENSION/CHASSIS

Suspension > 4-wheel independent aluminium double-wishbone

Wheels > Aluminum-alloy, 17" x 8.0" JJ

Tires > High performance 215/40 R17 83Y (front) / 255/40 R17 94Y (rear)

Braking System > Power assisted, 4-wheel disc
with 4-channel anti-lock braking system (ABS)

■ AMENITIES

Driver's and passenger's airbags (SRS)

3-point seatbelts with automatic pretensioners

4-wheel, 4-channel anti-lock braking system (ABS)

Traction Control System (TCS)

Xenon High-Intensity Discharge (HID) headlights

Impact-absorbing crumple zones (front and rear)

Theft-deterrent system with electronic immobilizer

Rear-spoiler-integrated LED Centre High Mount Stop Light

Side-impact door beams

Leather trimmed interior with Leather-wrapped steering wheel and shift knob

4-way power-adjustable driver's and passenger's seat

Handcrafted all-aluminum-alloy unit-body construction

Handcrafted engine assembly

Automatic Climate Control System

Acura/Bose® Sound System with 6-disc CD/MP3 changer, AM/FM tuner

Variable Volume Induction System

Fiber-reinforced metal (FRM) cylinder walls

Titanium connecting rods

Stainless steel headers

Remote entry system

Body-coloured removable roof panel with onboard storage

Body-integrated rear spoiler and air foil

Gold-toned front and rear brake callipers with NSX logo

4-coat, 4-bake paint process

Deeply bolstered leather trimmed seats with perforated seating systems

Sport-oriented instrumentation with dark blue-faced gauges,
including: speedometer, tachometer, fuel, battery charge,
water temperature, oil pressure.

Available body-colour matched interior trim

Mesh side intake grille

Power-operated body-coloured outside mirrors

Dual outlet exhaust

WARRANTY



THE ACURA EXPERIENCE

At Acura, our commitment to excellence goes well beyond engineering our vehicles. We're entirely as committed to making your ownership experience a rewarding one. So every new Acura includes: a complimentary tank of gas at time of delivery • 24-hour Roadside Assistance for the first four years of ownership, which includes our Dispatch Emergency Roadside Service, Emergency Lockout Service, Traffic Accident Services and more. See your Acura Dealer for details.

RL 3 YEAR COMPLIMENTARY MAINTENANCE

As one would expect from a luxury flagship vehicle, the all-new 2005 RL includes complimentary maintenance for the first three years of ownership or 60,000km, whichever comes first. Maintenance requirements are determined by the maintenance minder equipped on the vehicle, and will vary depending on individual driving style and kilometres driven. Services beyond those expected for the stated period may not be covered, see your Acura dealer for complete details.

WARRANTIES

Your new Acura vehicle comes with the following warranties:

- Major component – 5-year/100,000-km limited warranty
- Vehicle – 3-year/60,000-km distributors limited warranty
- Rust Perforation – 5-year unlimited-distance warranty
- Surface Corrosion – 3-year unlimited-distance warranty
- Accessories – 3-year/60,000-km limited warranty (when installed by an authorized Acura Dealer at time of new vehicle delivery). Regular maintenance items and parts are subject to normal wear and replacement, and are not covered by warranty. Certain other items are excluded, and certain conditions apply. See your Acura dealer for complete details.

Specifications, features, illustrations and equipment shown in this catalogue are based upon the latest available information at the time of publication. Remember Your Seat Belts. It's a Simple Fact of Life. Although descriptions are believed to be correct, accuracy cannot be guaranteed. Honda Canada Inc. reserves the right to make changes at any time, without notice or obligation, in colours, specifications, accessories, materials and models. Some vehicles are shown with optional equipment. Some vehicles shown are U.S. models, Canadian specifications may vary. *Map database of the Acura Navigation System covers major metropolitan areas in southern Canada and the 48 contiguous U.S. states. For a list of current detailed coverage areas, refer to the Acura website, www.acura.ca. ²Dynamic Package and Dynamic NAVI Package high performance tires' tread pattern is not designed for winter driving, snow and ice should be avoided. See Acura dealer for details. Bose®, Bose Centerpoint® and Bose AudioPilot® and are registered trademarks of Bose Corporation. Richbass™ is a trademark of Bose Corporation. HomeLink® is a registered trademark of Johnson Controls Technology Company. ELS Surround™ is a registered trademark of Panasonic Automotive Systems Company of America. Dolby® is a registered trademark of Dolby Laboratories. DTS® is a registered trademark of Digital Theater Systems, Inc. Acura, a division of Honda Canada Inc., 715 Milner Avenue, Toronto, Ontario, Canada M1B 2K8. 1-888-9-ACURA-9. www.acura.ca. Acura, RL, TL, TSX, RSX, EL, MDX, NSX, Acura Navigation System with Voice Recognition, Variable Torque Management (VTM-4), HandsFreeLink, Super Handling All-Wheel-Drive (SH-AWD), Active Noise Cancellation System (ANC), Advanced Compatibility Engineering (ACE), VSA, VTEC, i-VTEC, Drive-by-Wire Throttle System, Sequential SportShift and Variable Timing Control (VTC) are trademarks of Honda Motor Co. Ltd.



