

2008 Acura



By advancing technology, design and performance,
we advance life.



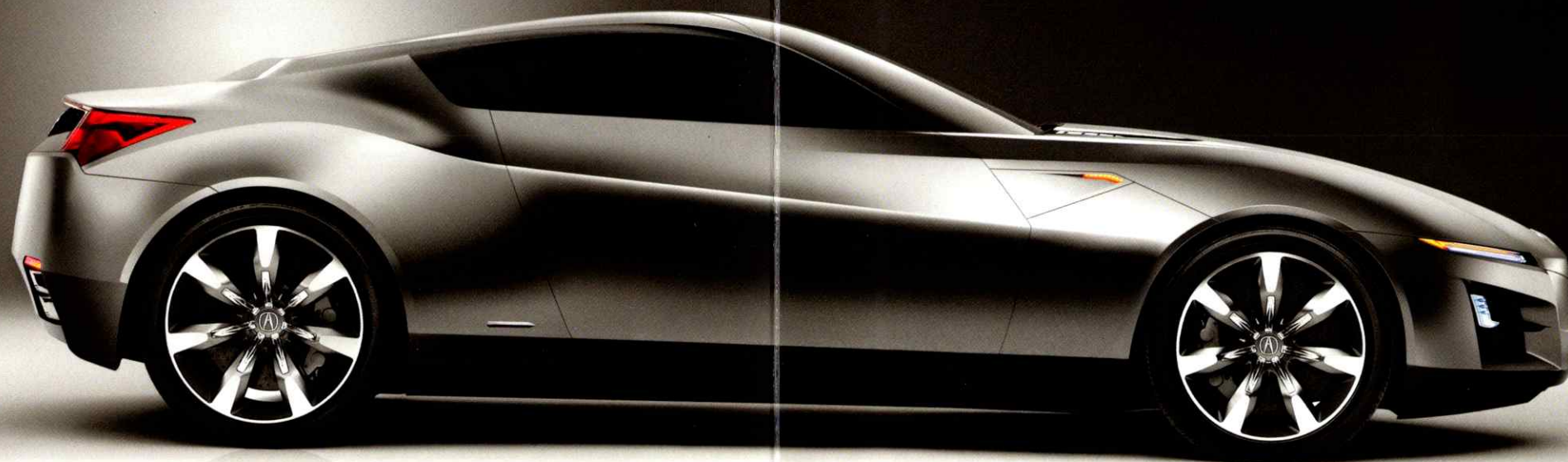
ADVANCED SPORTS-
CAR CONCEPT

THOUGH THIS VEHICLE
IS NOT INTENDED
FOR THE SHOWROOM,
ITS COMBINATION OF
PRECISION AND PASSION
SIGNALS THE FUTURE
OF Acura DESIGN.

It is all about being out front. About the desire to see and experience what is just over the horizon. It is not about reacting, it is about anticipating. At Acura, this spirit is infused in everything we do. It is found in technology like Super Handling All-Wheel Drive™ and the first navigation system with real-time traffic.

It is evident in the creation of our Advanced Sports-Car Concept, destined not for the showroom but to be a styling influence on Acuras to come. In the building of a new design studio in California to lengthen our reach into the future. It is what inspires, fuels and drives us to keep furthering the state of automotive luxury. All for the purpose of creating new experiences, new opportunities.

Acura is always advancing, and helps you do the same.





The spirit of innovation is apparent in the smallest details and in our **grandest endeavors.**





The results of competition can be seen on the track, and in our showrooms.

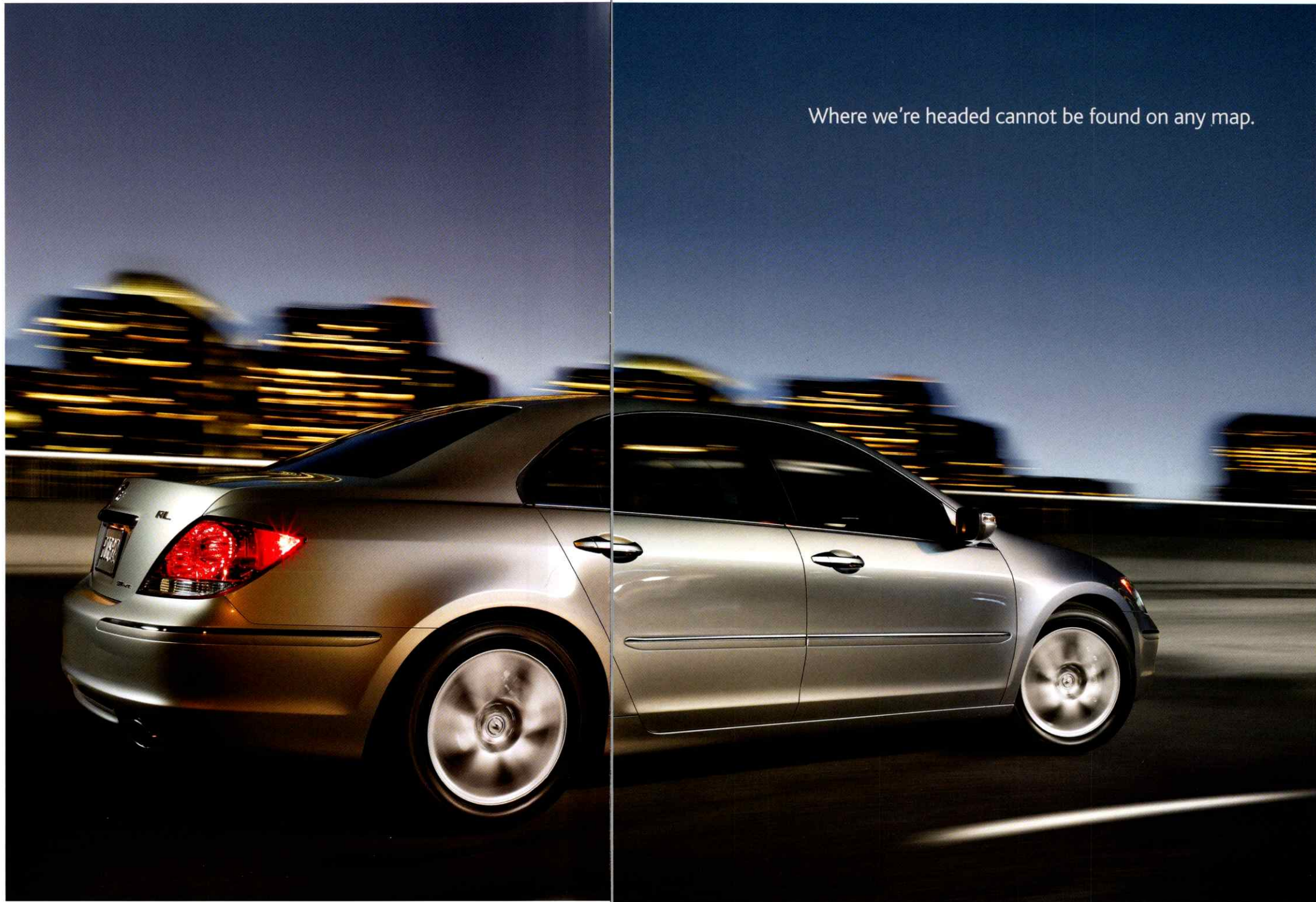
IN OUR VERY FIRST RACE, THE 2007 TWELVE HOURS OF SEBRING, THREE Acura AMERICAN LE MANS® CARS TOOK THREE OF THE TOP FOUR SPOTS IN THE LMP2 CLASS, INCLUDING A HISTORIC FIRST WIN BY THE ANDRETTI GREEN RACING TEAM. THIS IMPRESSIVE DEBUT MARKS THE CONTINUATION OF A COMMITMENT, IN WHICH ADVANCED Acura TECHNOLOGY IS DEVELOPED AND TESTED AT THE HIGHEST LEVEL, SO THAT WE CAN ONE DAY BRING IT TO YOU.



World Class



Where we're headed cannot be found on any map.



It is our never-ceasing goal to turn notions into breakthroughs.
Revelations into reality.



RL

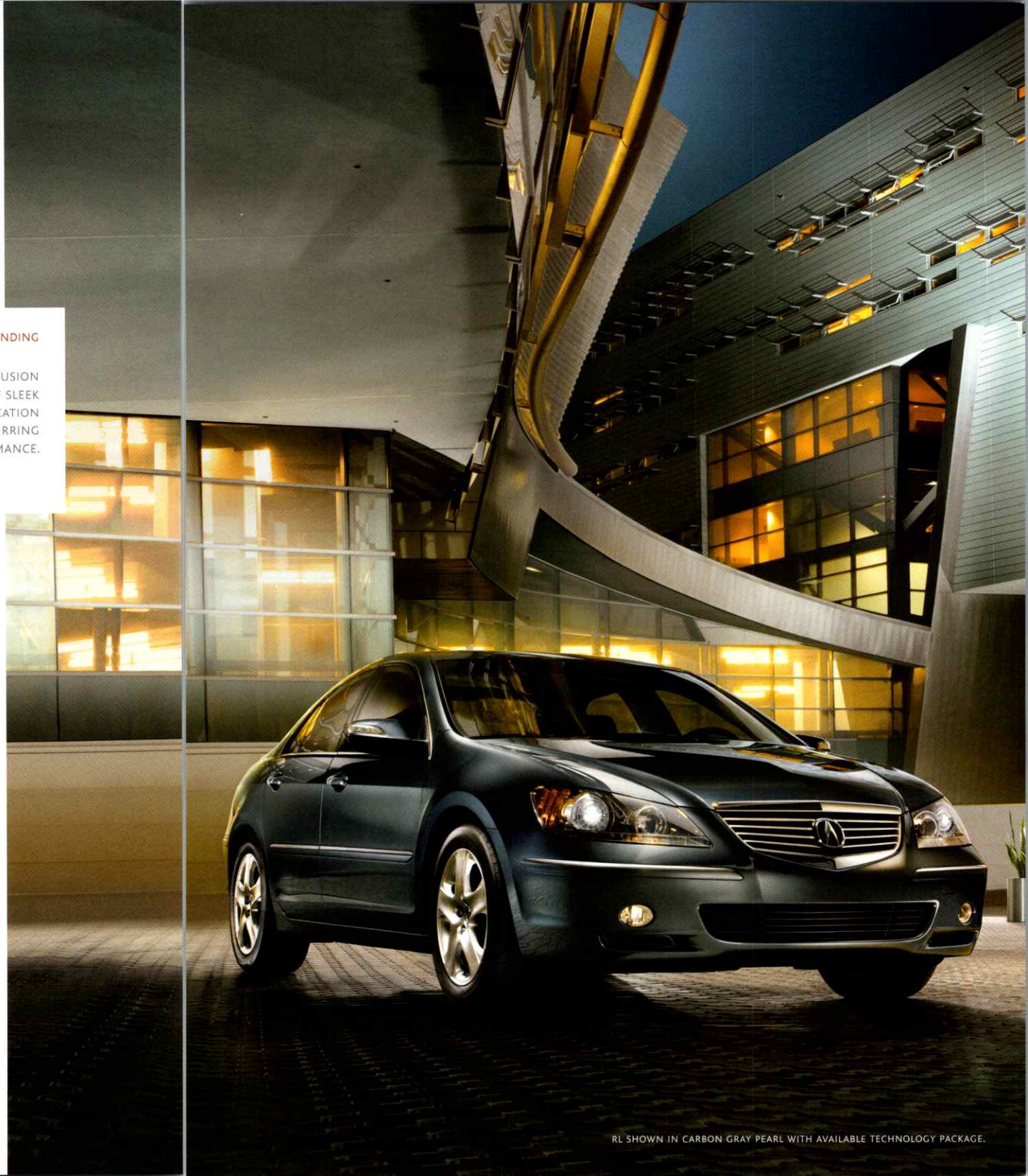
When luxury, performance and comfort
all exist as expressions of innovation,
the senses are elevated, the imagination is
stirred, the entire experience, advanced.

COMMANDING

THE FUSION
OF SLEEK
SOPHISTICATION
AND STIRRING
PERFORMANCE.

THE Acura RL CONSTITUTES A SOPHISTICATED FUSION OF DRIVING,
COMFORT AND SAFETY TECHNOLOGIES THAT TOGETHER REDEFINE
THE VERY NATURE OF THE AUTOMOTIVE LUXURY EXPERIENCE.

SEATED INSIDE THE OPULENTLY APPOINTED RL, YOUR UNLIMITED
POTENTIAL HAS MET ITS MATCH. F1®-INSPIRED PADDLE SHIFTERS
GIVE YOU INTIMATE CONTROL OF THE V-6 ENGINE'S FORMIDABLE
POWER. AS THAT POWER REACHES THE PAVEMENT, THE SUPER
HANDLING ALL-WHEEL DRIVE™ SYSTEM EXERTS EVEN GREATER
OVERSIGHT, EXPERTLY APPORTIONING TORQUE WHERE IT'S NEEDED
MOST FOR EXCEPTIONAL HANDLING IN BOTH WET AND
DRY CONDITIONS. THE SYSTEM EVEN ACCELERATES THE OUTSIDE
REAR WHEEL WHEN CHARGING THROUGH TIGHT CURVES
FOR EXHILARATING, RAZOR-SHARP CORNERING.



RL SHOWN IN CARBON GRAY PEARL WITH AVAILABLE TECHNOLOGY PACKAGE.

Leave compromise, along with
everything else, in your wake.

290-HP, 3.5-LITER VTEC® V-6 ENGINE

SUPER HANDLING ALL-WHEEL DRIVE (SH-AWD™)

Acura/BOSE® 10-SPEAKER SURROUND-SOUND SYSTEM

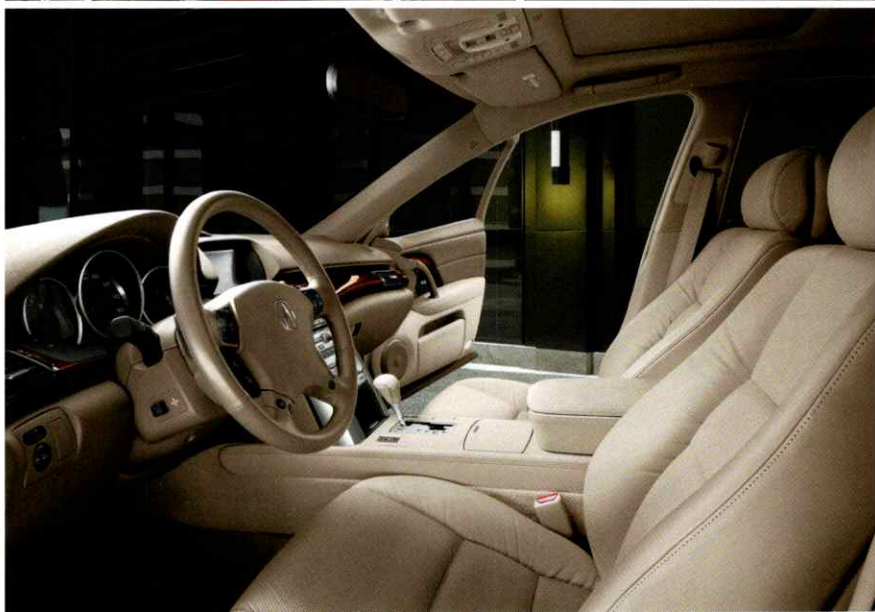
KEYLESS ACCESS SYSTEM

AVAILABLE Acura NAVIGATION SYSTEM¹ WITH VOICE RECOGNITION™

RL SHOWN IN PLATINUM FROST METALLIC WITH AVAILABLE TECHNOLOGY PACKAGE.



THE RL CABIN IS A LEATHER-TRIMMED, ACOUSTICALLY TAILORED SANCTUARY FOR THE DRIVING ENTHUSIAST. THE POWER AND CLARITY OF THE VEHICLE'S SURROUND-SOUND SYSTEM PROVIDES THE IDEAL SETTING. TECHNOLOGY LIKE DUAL-ZONE CLIMATE CONTROL AND AVAILABLE NAVIGATION WITH REAL-TIME TRAFFIC² GIVE YOU AN ELEVATED LEVEL OF COMFORT AND CONTROL. AND IT'S ALL DESIGNED TO WORK INTUITIVELY, OFTEN SATISFYING YOUR NEEDS BEFORE THEY EVEN OCCUR TO YOU, LETTING YOU CONCENTRATE MORE ON THE PLEASURES OF THE ROAD.



TL

Witness the art of innovation in its sleek lines.

Experience the science of innovation in systems that inform and indulge. Feel the power of innovation in its unfailing ability to thrill.

BOLDLY GO

ITS RAZOR'S-EDGE
STYLING IS AN
ACCURATE PORTENT
OF THE TL'S HIGHLY
ENTHUSIASTIC
PERFORMANCE.

CONCEIVED TO EXCITE, BOTH THE TL AND THE TL TYPE-S IMMERSE YOU IN REFINEMENT, EVEN AS THEY CONNECT YOU TO THE ROAD.

MORE THAN A SET OF PERFORMANCE FIGURES ON WHEELS, THE TL HAS BEEN ENGINEERED TO DELIVER AN EXHILARATING EXPERIENCE THROUGHOUT YOUR ENTIRE DRIVE. THE VTEC® ENGINE GIVES YOU COMMANDING ACCELERATION NO MATTER WHERE THE TACH NEEDLE RESTS WHILE THE RACE-INSPIRED SUSPENSION HANDLES EVERY CURVE WITH PRECISION. THE TYPE-S UPS THE PERFORMANCE STANDARDS WITH ITS BIGGER, MORE POWERFUL ENGINE, ENHANCED BRAKING, MORE PRECISE CORNERING AND AN AVAILABLE CLOSE-RATIO 6-SPEED MANUAL TRANSMISSION.





TL TYPE-S SHOWN IN ALABASTER SILVER METALLIC.

WHEN YOU'RE NOT LOSING YOURSELF IN THE THRILL OF THE DRIVE, THE TL'S MANY LUXURY AND TECHNOLOGY FEATURES KEEP YOU CONNECTED AND ENGAGED WITH MORE OF LIFE'S PLEASURES. MATERIAL COMFORTS INCLUDE SUMPTUOUS LEATHER AND TEXTURED ALUMINUM TRIM AS WELL AS SOPHISTICATED DUAL-ZONE CLIMATE CONTROL. THE SURROUND-SOUND SYSTEM FILLS THE CABIN WITH AN INCREDIBLY RICH MUSIC EXPERIENCE. AND WHILE THE TL CREATES A PERFECT WORLD AROUND YOU, THE BLUETOOTH® HANDSFREELINK®³ TELEPHONE INTERFACE HELPS KEEP YOU CONNECTED TO THOSE OUTSIDE THE CABIN.



High performance meets
high refinement.

258-HP, 3.2-LITER VTEC V-6 ENGINE

286-HP, 3.5-LITER VTEC V-6 ENGINE (TYPE-S)

AVAILABLE 6-SPEED MANUAL TRANSMISSION (TYPE-S)

Acura/ELS SURROUND® PREMIUM SOUND SYSTEM

AVAILABLE Acura NAVIGATION SYSTEM¹ WITH VOICE RECOGNITION™

TL SHOWN IN ROYAL BLUE PEARL.



TSX

Ingenuity never rests. Instead, with every curve and in every moment, it delights the senses, captures the imagination and liberates the soul.

SURPASS

THE TSX WILL
KEEP EXCEEDING
EXPECTATIONS
LONG AFTER YOUR
FIRST DRIVE.

THE TSX ADVANCES THE LUXURY EXPERIENCE WITH TECHNOLOGIES ENGINEERED TO EXHILARATE, PAMPER AND INFORM EVERY TIME YOU TAKE TO THE ROAD.

WITH ITS UNCEASING ABILITY TO GENERATE THRILLS, THE TSX IS A REVELATION TO DRIVE. RESPONSIVE POWER OUTPUT COMES COURTESY OF A SOPHISTICATED i-VTEC® ENGINE. A 4-WHEEL INDEPENDENT SUSPENSION SYSTEM PRODUCES THOROUGHLY ENTERTAINING HANDLING AGILITY WHILE ITS PRECISION-CRAFTED RACK-AND-PINION STEERING GIVES THE DRIVER A VISCERAL CONNECTION TO THE ROAD. IT'S ALL PART OF A DRIVING EXPERIENCE DESIGNED TO FIRMLY AFFIX A SMILE TO YOUR FACE THROUGHOUT YOUR JOURNEY.





TSX SHOWN IN NIGHTHAWK BLACK PEARL

The more technology advances, the
more it centers around you.

205-HP, 2.4-LITER, 16-VALVE i-VTEC ENGINE

AVAILABLE 6-SPEED MANUAL TRANSMISSION

Acura 360-WATT PREMIUM SOUND SYSTEM

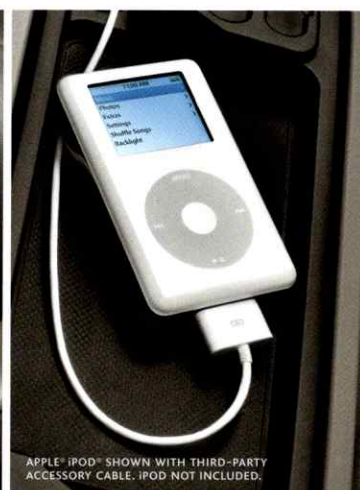
BLUETOOTH® HANDSFREELINK®³ WIRELESS TELEPHONE INTERFACE

AVAILABLE Acura NAVIGATION SYSTEM¹ WITH VOICE RECOGNITION™

TSX SHOWN IN NIGHTHAWK BLACK PEARL.



INSIDE THE TSX, THE SLEEK, MODERN DESIGN AND MATERIAL RICHNESS GIVE YOU A FIRST-CLASS SEAT FROM WHICH TO ENJOY THE FUN. CHOOSE THE AVAILABLE Acura NAVIGATION SYSTEM AND YOU'LL GET MORE THAN JUST POINT-TO-POINT DIRECTIONS. IT ALSO COMES WITH A HUGE DATABASE THAT INCLUDES ZAGAT SURVEY® RATINGS OF THOUSANDS OF RESTAURANTS. AND YOU CAN LINK YOUR MP3 PLAYER DIRECTLY TO THE VEHICLE'S AUDIO SYSTEM TO BRING YOUR OWN PERSONAL SOUNDTRACK ALONG FOR THE RIDE.



MDX

By advancing technology, elevating performance and expanding utility, the entire notion of luxury travel is given a new, inspired perspective.

THE CAPACITY
FOR THRILLS

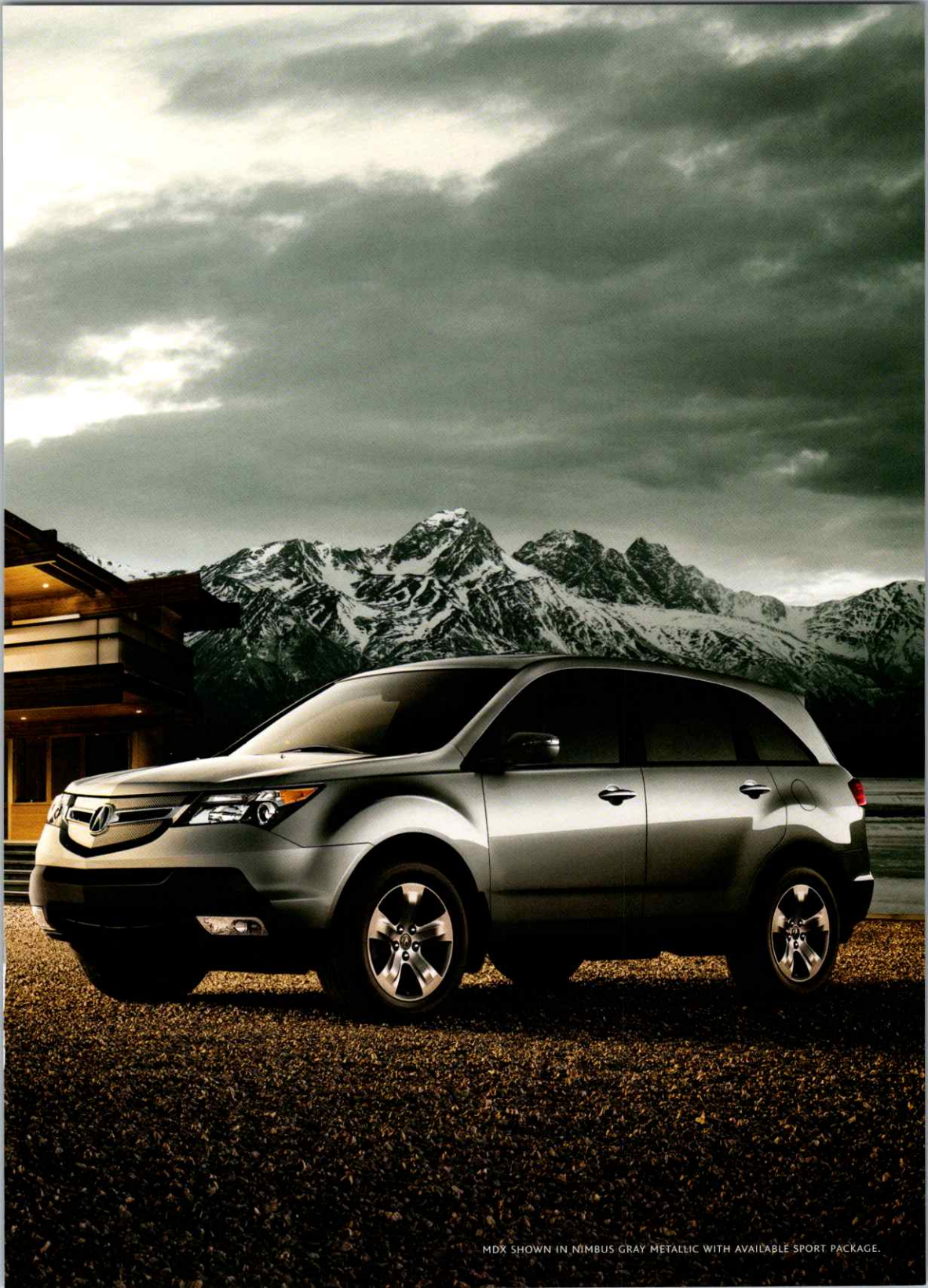
EXHILARATING
PERFORMANCE IS
PERHAPS THE
GREATEST LUXURY
OF ALL.

STYLING AS SHARPLY HONED AS ITS PERFORMANCE. COMFORT THAT IS A MATCH FOR ITS UTILITY. THE Acura MDX TAKES LUXURY TO A WHOLE NEW PLACE.

IT'S SAID THAT IF YOU CAN MASTER GERMANY'S LEGENDARY NÜRBURGRING—NORMALLY THE TESTING GROUND OF ELITE SPORTS CARS—YOU CAN HANDLE ANYTHING. FOR THIS REASON, Acura SPENT CONSIDERABLE TIME THERE HONING THE MDX'S EDGE. THE RESULTS ARE IMMEDIATELY RECOGNIZABLE WHEN YOU TACKLE A CHALLENGING ROAD CLOSER TO HOME. POWERED BY OUR LARGEST-EVER Acura PRODUCTION ENGINE, THE MDX ACCELERATES WITH AUTHORITY.

SUPER HANDLING ALL-WHEEL DRIVE™ HELPS IT CORNER WITH AMAZING PRECISION WHILE ITS AVAILABLE ACTIVE DAMPER SYSTEM HELPS CONTROL BODY ROLL. AND ITS LARGE-DIAMETER BRAKES DELIVER CONFIDENT STOPPING POWER. IT'S A DRIVING EXPERIENCE YOU MAY NOT EXPECT FROM A VEHICLE THAT PROVIDES THIS MUCH SPACE FOR PASSENGERS, CARGO OR BOTH.





MDX SHOWN IN NIMBUS GRAY METALLIC WITH AVAILABLE SPORT PACKAGE.

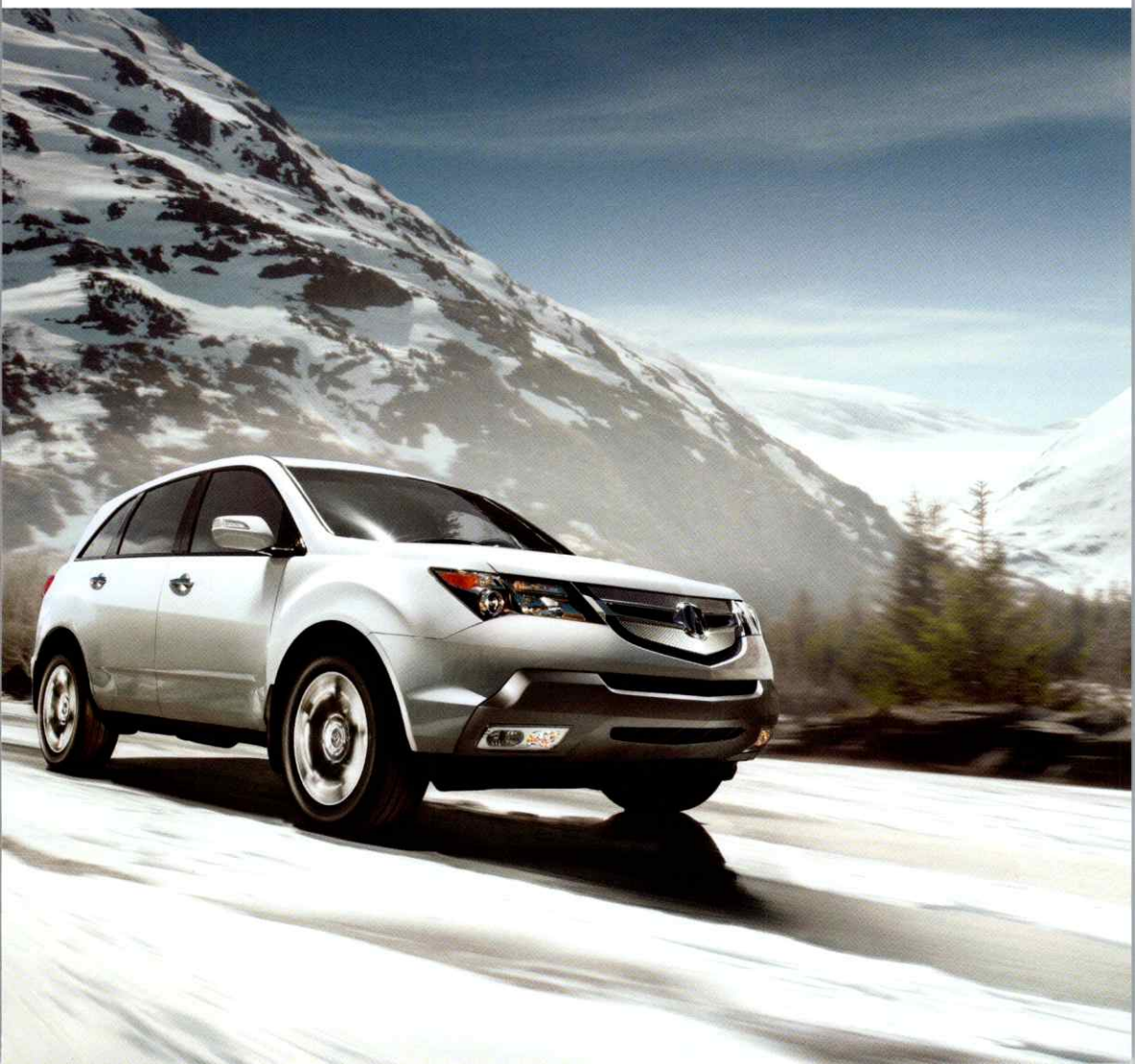
ITS HIGH LEVEL OF PERSONALIZED COMFORT INCLUDES AN 8-WAY ADJUSTABLE DRIVER'S SEAT AND TRI-ZONE CLIMATE CONTROL. FACTOR IN ITS MODERN INTERIOR DESIGN, RICH LEATHER AND ABUNDANT SPACE FOR UP TO SEVEN AND IT'S CLEAR THE MDX WAS DESIGNED TO MAKE YOU FEEL AT HOME, NO MATTER WHERE YOU GO. AVAILABLE FEATURES LIKE A SOUND SYSTEM THAT RIVALS HIGH-END HOME SETUPS, REMOTE-LINKED POWER TAILGATE, REARVIEW CAMERA AND REAR ENTERTAINMENT SYSTEM ALL HELP ELEVATE THE LUXURY IN THIS HIGHLY REFINED VEHICLE.



A sixth sense for catering
to all five of yours.

300-HP, 3.7-LITER VTEC® V-6 ENGINE
SUPER HANDLING ALL-WHEEL DRIVE (SH-AWD™)
TRI-ZONE AUTOMATIC CLIMATE CONTROL SYSTEM
AVAILABLE Acura NAVIGATION SYSTEM¹ WITH VOICE RECOGNITION™
AVAILABLE ACTIVE DAMPER SYSTEM SPORT SUSPENSION

MDX SHOWN IN ASPEN WHITE PEARL WITH AVAILABLE SPORT PACKAGE.



RDX

Load in all your expectations of what an SUV can be and advance them, refine them, sharpen them, turbocharge them and then point them toward the nearest twisty road.

SERIOUS FUN

AN INSPIRED
COMBINATION
OF UTILITY
AND VELOCITY.

THE RDX'S TURBOCHARGED ACCELERATION, REMARKABLE HANDLING AND LEADING-EDGE TECHNOLOGY ELEVATE YOU TO THE NEXT LEVEL OF ADVANCED DRIVING.

THE RDX IS A SHOWCASE OF WHAT HAPPENS WHEN YOU DESIGN A VEHICLE WITH SUV FUNCTIONALITY, BUT REFUSE TO ACCEPT TYPICAL SUV PERFORMANCE LIMITATIONS. THE ENGINE'S TURBOCHARGER HAS BEEN ENGINEERED TO VIRTUALLY ELIMINATE TURBO LAG. OPEN

THE THROTTLE AND ACCELERATION IS AS IMMEDIATE AS IT IS EXHILARATING. THE VEHICLE'S SUPER HANDLING ALL-WHEEL DRIVE™ ENHANCES HANDLING DURING BAD WEATHER AS WELL AS GOOD, HELPING YOU POWER THROUGH THE CURVES WITH AUTHORITY. IT'S ENOUGH TO TURN EVERY DRIVE INTO A THRILLING EXPERIENCE.





RDX SHOWN IN POLISHED METAL METALLIC.

You can never be too powerful,
or too well connected.

240-HP, 2.3-LITER i-VTEC® TURBO ENGINE

SUPER HANDLING ALL-WHEEL DRIVE (SH-AWD™)

5-SPEED AUTOMATIC TRANSMISSION WITH SEQUENTIAL SPORTSHIFT AND PADDLE SHIFTERS

BLUETOOTH® HANDSFREELINK®³ WIRELESS TELEPHONE INTERFACE

AVAILABLE Acura NAVIGATION SYSTEM¹ WITH VOICE RECOGNITION™

RDX SHOWN IN ALABASTER SILVER METALLIC.



WITH ITS LEATHER-TRIMMED SEATS, MODERN AESTHETICS AND AVAILABLE SURROUND-SOUND SYSTEM, THE CABIN OF THE RDX IS A SUPREMELY COMFORTABLE RETREAT. BUT THAT DOESN'T MEAN YOU'RE CUT OFF FROM THE REST OF THE WORLD. THE AVAILABLE NAVIGATION SYSTEM¹ OFFERS REAL-TIME TRAFFIC² INFORMATION AS WELL AS RESTAURANT RATINGS FROM ZAGAT. THE STANDARD BLUETOOTH HANDSFREELINK³ CONNECTS YOU FURTHER, LETTING YOU MAKE AND RECEIVE PHONE CALLS ON YOUR BLUETOOTH-COMPATIBLE CELL PHONE.



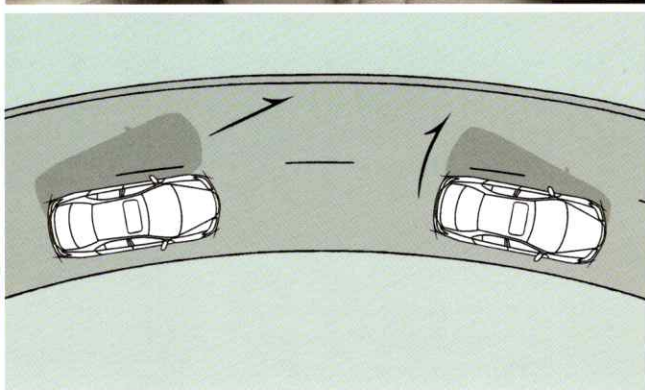
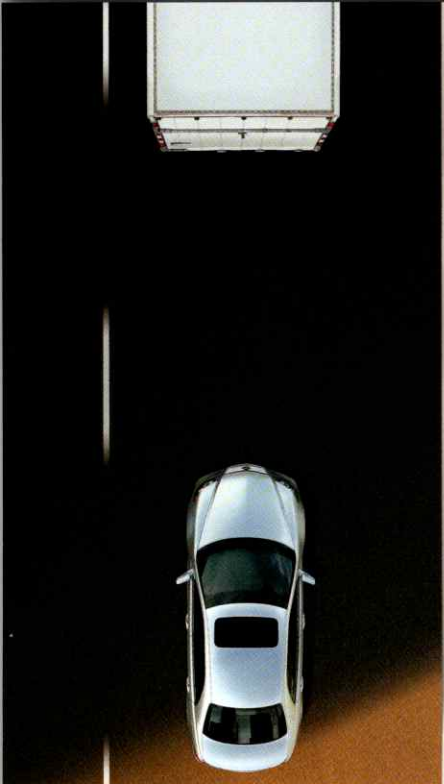


Safety through innovation.

THE Acura PENDANT FOR BEING AHEAD OF
THE CURVE IS NO MORE EVIDENT THAN IN THE
FIELD OF SAFETY, ADVANCING PEACE OF MIND
IN AN UNCERTAIN WORLD.

FOR MORE SAFETY FEATURES, VISIT acura.com.

AT Acura, WE CONSIDER YOUR SAFETY OUR GREATEST PRIORITY AND INCORPORATE IT INTO EVERY ASPECT OF VEHICLE DESIGN. PROTECTIVE SYSTEMS ARE BUILT INTO THE FRAME, STEERING, ENGINE AND BRAKES. EMPLOYING CUTTING-EDGE RESEARCH AND DESIGN, OUR GOAL IS TO HELP YOU AVOID ACCIDENTS IN THE FIRST PLACE AND MITIGATE THEIR EFFECTS WHEN THEY'RE UNAVOIDABLE.



EVERY Acura features an array of standard active and passive safety features. These include side curtain airbags, dual-stage, dual-threshold front airbags and front side airbags with an occupant position detection system (OPDS). This is designed to prevent the front side airbag from deploying if a small-statured passenger is out of position and leaning into the deployment path.* **VEHICLE STABILITY ASSIST™ (VSA*)** helps prevent understeer or oversteer by braking individual wheels and/or reducing engine power to help return the vehicle to its intended path. The tire pressure monitoring system (TPMS)* continually checks the tires and will alert you if a specific tire's air pressure is significantly low.

In addition, the RL, MDX and RDX feature **ADVANCED COMPATIBILITY ENGINEERING™ (ACE™)**, which helps minimize misalignment with the other vehicle in a crash, helping prevent override. The RL, TL, MDX and RDX employ **ELECTRONIC BRAKE DISTRIBUTION (EBD)**, which apportions braking power based on dynamic loading for potentially shorter stopping distances. The **COLLISION MITIGATION BRAKING SYSTEM™ (CMBS™)** available on the RL can warn the driver of a possible impending collision, and actually apply the brakes if an impact is unavoidable.

*ALWAYS USE SEAT BELTS AND APPROPRIATE CHILD SEATS. CHILDREN 12 AND UNDER ARE SAFEST WHEN PROPERLY RESTRAINED IN THE REAR SEAT. FRONT AIRBAGS INFLATE AND DEFLATE IN A FRACTION OF A SECOND.

Specifications

EVERY Acura BENEFITS FROM A LONG LIST OF STANDARD LUXURY FEATURES. THESE INCLUDE RICH LEATHER SEATING, BLUETOOTH® HANDSFREELINK³, MULTI-ZONE CLIMATE CONTROL, SUNROOF AND A PREMIUM SOUND SYSTEM FEATURING AN IN-DASH CD CHANGER, MP3/AUXILIARY INPUT JACK AND XM® SATELLITE RADIO.

ENVIRONMENTAL COMMITMENT

PART OF PUSHING THE LIMITS OF PERFORMANCE IS DEVELOPING ENGINES THAT ARE NOT ONLY POWERFUL, BUT EFFICIENT AND EARTH-FRIENDLIER, TOO. IN FACT, EACH AND EVERY Acura VEHICLE QUALIFIES AS A LOW-EMISSION VEHICLE (LEV)⁵ OR BETTER. THIS COMMITMENT TO PLANET EARTH IS EXTENDED TO THE WAY WE BUILD OUR VEHICLES. MANY OF OUR VEHICLES USE A WATER-BASED PAINT PROCESS, HOUSED IN FACILITIES DESIGNED TO REDUCE EMISSIONS. WE ARE ALWAYS LOOKING FOR INNOVATIVE WAYS TO CONSERVE, RECYCLE AND REUSE RESOURCES.

RL

- 290-hp, 3.5-Liter, Aluminum-Alloy, 24-Valve, SOHC VTEC® V-6 Engine
- Super Handling All-Wheel Drive™ (SH-AWD™)
- 5-Speed Sequential SportShift Automatic Transmission with Paddle Shifters
- 4-Wheel Disc Brakes with ABS, EBD and Brake Assist
- Advanced Compatibility Engineering™ (ACE™)
- Front, Front Side and Side Curtain Airbags
- Vehicle Stability Assist™ (VSA®)
- Dual-Zone, Dual-Mode Automatic Climate Control System
- Acura/Bose® 10-Speaker Surround-Sound System
- XM® Satellite Radio⁶
- MP3/Auxiliary Input Jack
- Bluetooth® HandsFreeLink³

AVAILABLE FEATURES:

- Acura Navigation System¹ with Voice Recognition™ and Rearview Camera
- AcuraLink™ Satellite Communication System⁷ with Real-Time Traffic²
- Active Front Lighting System (AFS)
- Collision Mitigation Braking System™ (CMBS™)
- Adaptive Cruise Control (ACC)
- Michelin® PAX® System Run-Flat Technology⁸

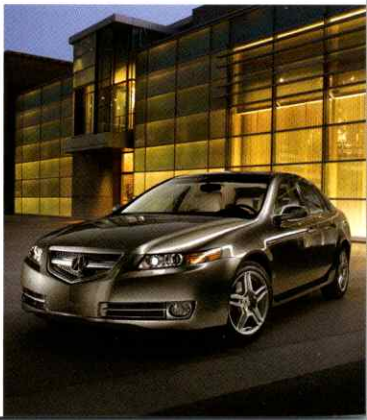
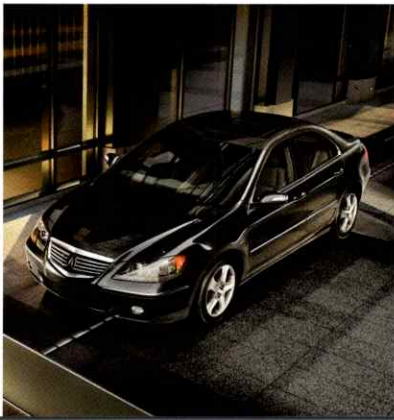
TL

- 258-hp, 3.2-Liter, Aluminum-Alloy, 24-Valve, SOHC VTEC® V-6 Engine
- 5-Speed Sequential SportShift Automatic Transmission
- 4-Wheel Disc Brakes with ABS, EBD and Brake Assist
- Front, Front Side and Side Curtain Airbags
- Vehicle Stability Assist™ (VSA®)
- Dual-Zone, Dual-Mode Automatic Climate Control System
- Acura/ELS Surround® Premium 8-Speaker Sound System
- XM® Satellite Radio⁶
- MP3/Auxiliary Input Jack
- Bluetooth® HandsFreeLink³
- Available Acura Navigation System¹ with Voice Recognition™ and Rearview Camera
- Available AcuraLink™ Satellite Communication System⁷ with Real-Time Traffic²

TL TYPE-S

- 286-hp, 3.5-Liter, Aluminum-Alloy, 24-Valve, SOHC VTEC® V-6 Engine
- 5-Speed Sequential SportShift Automatic Transmission with Paddle Shifters or Close-Ratio 6-Speed Manual
- Acura Navigation System¹ with Voice Recognition™ and Rearview Camera
- AcuraLink™ Satellite Communication System⁷ with Real-Time Traffic²
- Integrated Quad-Outlet Sport Exhaust

acura.com



TSX

- 205-hp, 2.4-Liter, Aluminum-Alloy, 16-Valve, DOHC i-VTEC® Engine
- 5-Speed Sequential SportShift Automatic Transmission or Close-Ratio 6-Speed Manual
- 4-Wheel Disc Brakes with ABS and Brake Assist
- Front, Front Side and Side Curtain Airbags
- Vehicle Stability Assist™ (VSA®)
- Power Moonroof with Tilt and Key-Off Operation
- Dual-Zone Automatic Climate Control System
- Sport Seats with Perforated Leather-Trimmed Interior
- Acura Premium 8-Speaker Sound System
- XM® Satellite Radio⁶
- MP3/Auxiliary Input Jack
- Bluetooth® HandsFreeLink^{®3}
- Available Acura Navigation System¹ with Voice Recognition™

MDX

- 300-hp, 3.7-Liter, Aluminum-Alloy, 24-Valve, SOHC VTEC® V-6 Engine
- Super Handling All-Wheel Drive™ (SH-AWD™)
- 5-Speed Sequential SportShift Automatic Transmission
- 4-Wheel Disc Brakes with ABS, EBD and Brake Assist
- Advanced Compatibility Engineering™ (ACE™)
- Front, Front Side and Side Curtain Airbags with Rollover Sensor
- Vehicle Stability Assist™ (VSA®)
- Tri-Zone, Front/Rear Synchronized Automatic Climate Control System
- 7-Passenger Seating
- Acura Premium 8-Speaker Sound System
- XM® Satellite Radio⁶
- MP3/Auxiliary Input Jack
- Bluetooth® HandsFreeLink^{®3}

AVAILABLE FEATURES:

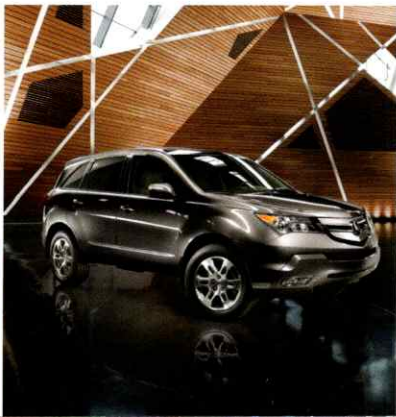
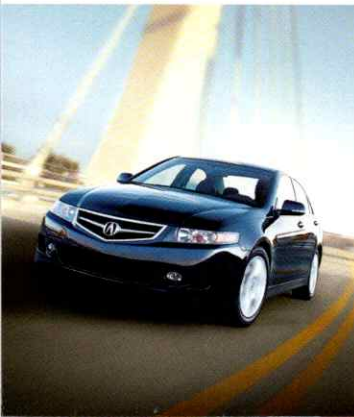
- Acura Navigation System¹ with Voice Recognition™ and Rearview Camera
- AcuraLink™ Satellite Communication System⁷ with Real-Time Traffic²
- Acura/ELS Surround® Premium 10-Speaker Sound System
- Acura DVD Rear Entertainment System
- Active Damper System Sport Suspension
- Remote-Linked Power-Operated Tailgate

RDX

- 240-hp, 2.3-Liter, Aluminum-Alloy, 16-Valve, DOHC i-VTEC® Turbo Engine
- Super Handling All-Wheel Drive™ (SH-AWD™)
- 5-Speed Sequential SportShift Automatic Transmission with Paddle Shifters
- 4-Wheel Disc Brakes with ABS, EBD and Brake Assist
- Advanced Compatibility Engineering™ (ACE™)
- Front, Front Side and Side Curtain Airbags with Rollover Sensor
- Vehicle Stability Assist™ (VSA®)
- Dual-Zone Automatic Climate Control System
- Acura Premium 7-Speaker Sound System
- XM® Satellite Radio⁶
- MP3/Auxiliary Input Jack
- Bluetooth® HandsFreeLink^{®3}

AVAILABLE FEATURES:

- Acura Navigation System¹ with Voice Recognition™ and Rearview Camera
- AcuraLink™ Satellite Communication System⁷ with Real-Time Traffic²
- Acura/ELS Surround® Premium 10-Speaker Sound System



Ownership

acura.com GET THE LATEST SPECIFICATIONS, MSRPS, PHOTOGRAPHS AND MORE. "DESIGN" YOUR OWN Acura AND PERSONALIZE IT WITH GENUINE ACCESSORIES. YOU CAN ALSO APPLY FOR FINANCING, CHECK ON SPECIFIC DEALER INVENTORIES AND EVEN REQUEST A PRICE QUOTE FROM AN INTERNET-CERTIFIED Acura DEALER.

WARRANTY⁹ ALL Acura VEHICLES AND GENUINE Acura ACCESSORIES INSTALLED BY THE DEALER AT THE TIME OF VEHICLE PURCHASE HAVE A 4-YEAR/50,000-MILE LIMITED WARRANTY. Acura VEHICLES ALSO HAVE A 6-YEAR/70,000-MILE LIMITED POWERTRAIN WARRANTY. IN ADDITION, OUTER BODY RUST-THROUGH IS COVERED ON ALL Acura VEHICLES BY A 5-YEAR/UNLIMITED-MILE LIMITED WARRANTY.

Acura-TRAINED SERVICE PERSONNEL YOUR LOCAL Acura DEALER IS AN EXCELLENT SOURCE FOR GENUINE Acura PARTS AND Acura FACTORY-TRAINED TECHNICIANS. THEY HAVE THE EXPERIENCE, TRAINING AND SPECIALIZED TOOLS NEEDED TO KEEP YOUR Acura UP TO FACTORY STANDARDS OF PERFORMANCE AND RELIABILITY.

Acura CARE ADDITIONAL PEACE OF MIND CAN BE HAD WITH THE Acura CARE[®] PROGRAM—COMPREHENSIVE VEHICLE AND TRAVEL PROTECTION BEYOND THE INITIAL WARRANTY PERIOD. SEE YOUR Acura DEALER FOR ALL THE FEATURES AND BENEFITS AVAILABLE WITH THIS PROGRAM.



1-800-TO-Acura OPERATORS ARE AVAILABLE 24 HOURS A DAY TO HELP GET ANSWERS TO YOUR Acura QUESTIONS.

HONDA FINANCIAL SERVICES¹⁰ WHETHER YOU'RE BUYING OR LEASING, HONDA FINANCIAL SERVICES CAN ASSIST YOU WITH THE PROCESS. SEE YOUR DEALER FOR DETAILS.

TOTAL LUXURY CARE¹¹—OWNER BENEFITS Acura's TOTAL COMMITMENT TO YOUR SATISFACTION DOESN'T END WITH DELIVERY OF A WORLD-CLASS VEHICLE. IT ONLY BEGINS THERE. EVERY Acura COMES WITH TOTAL LUXURY CARE[®] (TLC[®]), AN ARRAY OF SERVICES DESIGNED TO HELP YOU ENJOY YOUR AUTOMOBILE FOR YEARS TO COME.



TRIP-INTERRUPTION BENEFITS IF A PROBLEM THAT IS COVERED BY YOUR WARRANTY INTERRUPTS YOUR TRIP MORE THAN 100 MILES FROM HOME, Acura WILL PROVIDE YOU WITH REIMBURSEMENT FOR MEALS, LODGING OR CAR-RENTAL EXPENSES—UP TO \$300 PER DAY FOR UP TO THREE DAYS.

24-HOUR ROADSIDE ASSISTANCE AS PART OF YOUR TLC BENEFITS, 24-HOUR ROADSIDE ASSISTANCE IS AVAILABLE TO YOU EVERYWHERE IN THE CONTINENTAL U.S. AND CANADA, DAY OR NIGHT, EVERY DAY OF THE YEAR. JUST CALL THE TOLL-FREE NUMBER AND REST ASSURED THAT ASSISTANCE IS PROMPTLY ON THE WAY.

Acura CONCIERGE—TRAVEL SERVICE IN AN EMERGENCY OR JUST TO HELP YOU PLAN A TRIP, Acura CONCIERGE SERVICE CAN HELP YOU WITH MANY LOGISTICAL DETAILS. IT WILL EVEN RELAY UP TO THREE URGENT MESSAGES ON YOUR BEHALF IF YOU CANNOT DO SO.

OWNER LINK THIS Acura OWNER'S-EXCLUSIVE WEB SITE LETS YOU PERSONALIZE YOUR OWNERSHIP EXPERIENCE, SCHEDULE MAINTENANCE AND OBTAIN ACCESSORIES, VALUABLE INFORMATION AND SERVICES TAILORED TO YOU AND YOUR Acura.

© 2007 Acura. Acura, MDX, TL, TSX, Type-S, RDX, RL, the stylized "A" logo, Acura Care, AcuraLink, Acura Navigation System with Voice Recognition, Advanced Compatibility Engineering (ACE), Collision Mitigation Braking System (CMBS), HandsFreeLink, Super Handling All-Wheel Drive (SH-AWD), Total Luxury Care (TLC), Vehicle Stability Assist (VSA), i-VTEC and VTEC are trademarks of Honda Motor Co., Ltd. Covered by patent rights issued and/or pending. Acura reserves the right to limit TLC services or reimbursements to any owner or driver when, in the judgment of Acura, the claims become excessive in frequency or type of occurrence. Acura also reserves the right to alter or withdraw the Acura Roadside Assistance Program, or any other part of the Acura TLC Program, at any time without notice. Specifications, features, illustrations and equipment shown in this catalog are based upon the latest available information at the time of publication. Although descriptions are believed to be correct, accuracy cannot be guaranteed. All images contained herein are either owned by American Honda Motor Co., Inc., or used under a valid license. It is a violation of federal law to reproduce these images without express written permission from American Honda Motor Co., Inc., or the individual copyright owner of such images. American Honda Motor Co., Inc., reserves the right to make changes at any time, without notice or obligation, in colors, specifications, accessories, materials and models. Some vehicles are shown with optional equipment. Apple and iPod are trademarks of Apple Computer, Inc., registered in the U.S. and other countries. The Bluetooth[®] word mark and logos are owned by the Bluetooth SIG, Inc., and any use of such marks by Honda Motor Co., Ltd., is under license. ELS Surround[®] is a registered trademark of Panasonic Automotive Systems Company of America. The XM name and XM NavTraffic are registered trademarks of XM Satellite Radio Inc. © Zagat Survey, LLC. Zagat Survey is a registered trademark of Zagat Survey, LLC. Make an intelligent decision. Fasten your seat belt. ¹ Navigation system available in the 48 contiguous United States and Hawaii. ² Real-time traffic requires monthly premium XM NavTraffic subscription. XM NavTraffic only available in select markets. ³ Visit www.hondafreelink.com for a list of compatible phones and available features. ⁴ For optimal tire wear and performance, tire pressure should be checked regularly with a gauge. Do not rely solely on the monitor system. See your owner's manual for details. ⁵ As rated by the California Air Resources Board. ⁶ Required XM radio and XM NavTraffic monthly subscriptions sold separately after 90-day trial period. Other fees and taxes may apply, including a one-time activation fee. XM NavTraffic only available in select markets. All fees and programming subject to change. Subscriptions subject to Customer Agreement available at xmradio.com. XM service only available in the 48 contiguous United States. ⁷ Not available in Alaska and Hawaii. ⁸ Michelin and PAX are registered trademarks of Michelin North America, Inc. ⁹ Ordinary maintenance items or adjustments, parts subject to normal wear and replacement, and certain other items are excluded. See your Acura dealer for the terms and conditions of limited warranties. ¹⁰ Honda Financial Services is a DBA of American Honda Finance Corporation. ¹¹ See your local dealer for details about Total Luxury Care (TLC) Roadside Assistance and Concierge Service. Printed in the U.S.A. 650M 8/07 E48000.





acura.com

