



ASTON MARTIN

*Vantage* **GT12**

*Vantage* **GT12**

---

A TRUE RACING CAR FOR THE ROAD

# AN UNCENSORED ADRENALIN RUSH

VANTAGE GT12 IS THE MOST  
FEROCIOUS, FOCUSED AND  
FINESSED VANTAGE EVER  
CREATED BY ASTON MARTIN.



# SPECIAL EDITION

GT12 TAKES VANTAGE TO  
SPECTACULAR NEW HEIGHTS,  
CELEBRATING THIS ICONIC  
CAR'S ACHIEVEMENTS BOTH  
ON AND OFF THE TRACK.

BUILT AROUND ASTON MARTIN'S  
6.0 LITRE V12, VANTAGE GT12  
IS STRICTLY LIMITED TO JUST  
100 SERIES PRODUCTION UNITS.





# THE DNA OF RACING

VANTAGE GT12 BRINGS THE RACING CAR TO THE ROAD. ASTON MARTIN'S RACING HERITAGE HAS ALWAYS BEEN INTEGRAL TO THE DEVELOPMENT OF OUR SPORTS CARS.

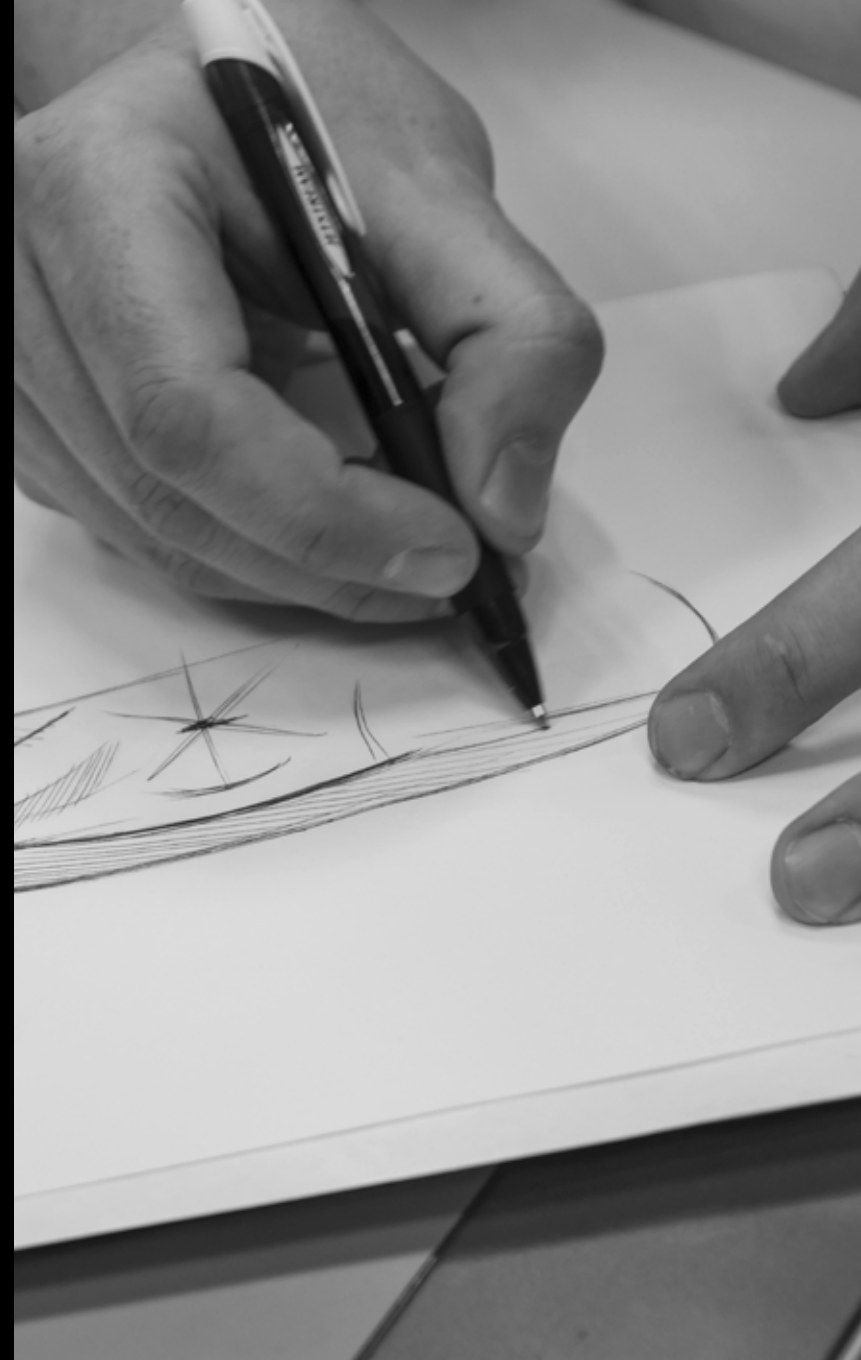
OUR RACING EXPERIENCE AT SOME OF THE MOST NOTORIOUS TRACKS, INCLUDING THE NÜRBURGRING, COMBINED WITH KNOWLEDGE DRAWN FROM OUR GT3 RACE CARS HAS INSPIRED THE EVOLUTION OF VANTAGE GT12.



# HARDCORE PERFORMANCE

- UPDATED 6.0-LITRE V12 NATURALLY ASPIRATED ENGINE
- 7-SPEED 'SPORTSHIFT III' AUTOMATED MANUAL TRANSMISSION
- SIGNIFICANT WEIGHT REDUCTION
- TRACK-FOCUSED SUSPENSION GEOMETRY
- OPTIMAL HIGH-SPEED STABILITY AND DYNAMIC EXCELLENCE
- PERFORMANCE-HONED AERODYNAMICS
- WIDE COUPE BODYSTYLE, ASSERTIVE STYLING
- BESPOKE CARBON FIBRE PANELS
- EXTENSIVE USE OF LIGHTWEIGHT, MOTORSPORT-DERIVED FEATURES AND MATERIALS





## TAILORING YOUR VANTAGE GT12

VANTAGE GT12 EVOKES THE STYLE OF THE TRACK WITH FIVE RACE-INSPIRED LIVERY SCHEMES AND A COLLECTION OF EXCLUSIVE GRAPHICS PACKS CREATED BY ASTON MARTIN'S DESIGN STUDIO.



## STANDARD EXTERIOR GRAPHICS

EVERY VANTAGE GT12 CAN BE SPECIFIED WITH A GRAPHICS PACK AS STANDARD. THERE ARE SIX AREAS THAT MAKE UP THE GRAPHICS PACK.

### GT12 GRAPHICS PACK:

- 1 LIPSTICK INNER
- 2 WING MIRROR CAPS
- 3 BODY SIDE GRAPHIC
- 4 FRONT FENDER GT12 LOGO
- 5 REAR DECK LID SURROUND
- 6 REAR WING END CAPS





# STANDARD LIVERY SCHEMES

EACH OF THE FIVE EXTERIOR LIVERY SCHEMES HAVE BEEN CAREFULLY COMPOSED BY THE ASTON MARTIN DESIGN STUDIO TO ACCENTUATE THE ENHANCED FORM AND FEATURES OF THIS STRIKING CAR.

LIVERY 1  
SPEEDWAY WHITE  
SILVER FOX GRAPHICS

LIVERY 2  
JET BLACK  
HAMMERHEAD SILVER GRAPHICS

LIVERY 3  
CHINA GREY  
SPEED YELLOW GRAPHICS

LIVERY 4  
OCELLUS TEAL  
GULF ORANGE GRAPHICS

LIVERY 5  
SKYFALL SILVER  
SPEEDWAY WHITE GRAPHICS



## STANDARD LIVERY SCHEMES

LIVERY 5  
SKYFALL SILVER  
SPEEDWAY WHITE GRAPHICS

LIVERY 4  
OCELLUS TEAL  
GULF ORANGE GRAPHICS

LIVERY 3  
CHINA GREY  
SPEED YELLOW GRAPHICS

LIVERY 2  
JET BLACK  
HAMMERHEAD SILVER GRAPHICS

LIVERY 1  
SPEEDWAY WHITE  
SILVER FOX GRAPHICS



## Q BY ASTON MARTIN GRAPHICS PACK

Q BY ASTON MARTIN IS THE ULTIMATE PERSONALISATION SERVICE. OUR SKILLED DESIGNERS HAVE TRANSFORMED VANTAGE GT12 INTO A TRULY BOLD STATEMENT OF INTENT BY EMPHASISING THE EXPOSED CARBON FIBRE FEATURES.

THE PACK CONSISTS OF A CHOICE OF EITHER ORANGE OR YELLOW ACCENTS ADDED TO THE FOLLOWING AREAS:

- FRONT SPLITTER
- FRONT BUMPER INNER
- SIDE SILLS
- MIRROR CAPS
- REAR DIFFUSER
- REAR WING END PLATES
- CARBON FIBRE FRONT GRILLE (IF SELECTED AS AN OPTION)





## Q BY ASTON MARTIN GRAPHICS PACKS

GRAPHICS PACK 1  
SPEEDWAY WHITE / SILVER FOX  
GULF ORANGE GRAPHICS PACK

GRAPHICS PACK 2  
SPEEDWAY WHITE / SILVER FOX  
SPEED YELLOW GRAPHICS PACK

GRAPHICS PACK 3  
JET BLACK / HAMMERHEAD SILVER  
GULF ORANGE GRAPHICS PACK

GRAPHICS PACK 4  
JET BLACK / HAMMERHEAD SILVER  
SPEED YELLOW GRAPHICS PACK



## Q BY ASTON MARTIN GRAPHICS PACKS

### GRAPHICS PACK 5

SKYFALL SILVER / SPEEDWAY WHITE  
SPEED YELLOW GRAPHICS PACK

### GRAPHICS PACK 6

SKYFALL SILVER / SPEEDWAY WHITE  
GULF ORANGE GRAPHICS PACK

### GRAPHICS PACK 7

OCELLUS TEAL AND GULF ORANGE  
GULF ORANGE GRAPHICS PACK

### GRAPHICS PACK 8

CHINA GREY / SPEED YELLOW  
SPEED YELLOW GRAPHICS PACK



## Q BY ASTON MARTIN GRAPHICS PACK PLUS

THE Q GRAPHICS PACK PLUS IS THE ULTIMATE DESIGN EXPRESSION OF VANTAGE GT12 AND WAS FEATURED ON THE SHOWCASE CAR UNVEILED AT THE 2015 GENEVA MOTOR SHOW.

THE Q GRAPHICS PACK PLUS IS AS PER THE Q GRAPHICS PACK WITH THE INCLUSION OF AN ADDITIONAL METEORITE STRIPE ON THE DOORS. THE Q GRAPHICS PACK PLUS IS ONLY AVAILABLE WITH THE SPEEDWAY WHITE AND SILVER FOX LIVERY.



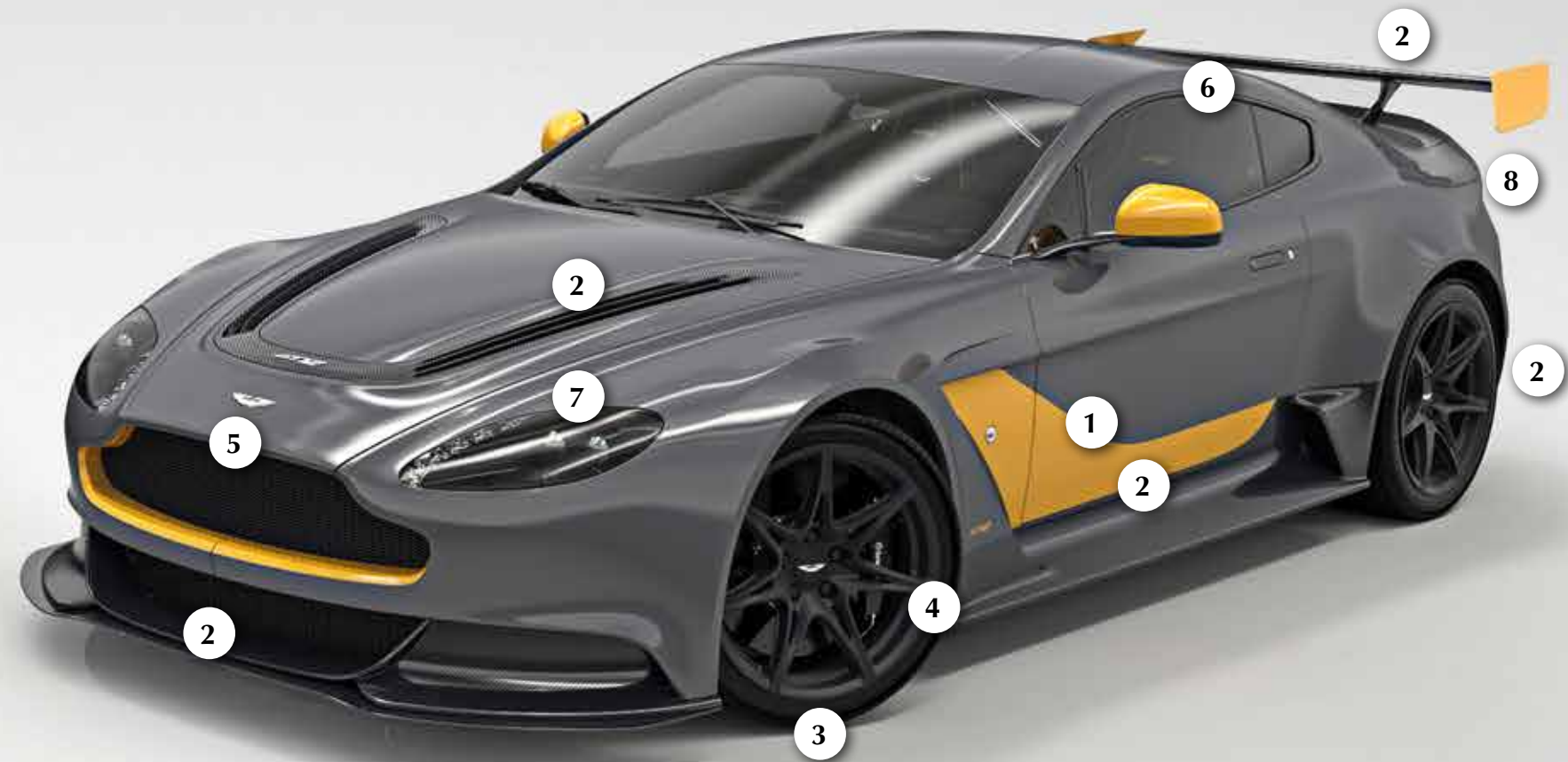


## Q BY ASTON MARTIN GRAPHICS PACK PLUS

GRAPHICS PACK PLUS 1\*  
GULF ORANGE LIVERY /  
METEORITE GRAPHICS

GRAPHICS PACK PLUS 2\*  
SPEED YELLOW LIVERY /  
METEORITE GRAPHICS

\* ONLY AVAILABLE WITH THE SPEEDWAY WHITE AND SILVER FOX LIVERY.



## STANDARD EXTERIOR SPECIFICATION

- |   |  |   |   |   |                             |
|---|--|---|---|---|-----------------------------|
| 1 | VANTAGE GT12 'RACE-INSPIRED' PAINT GRAPHICS  | 3 | 19" 7-SPOKE LIGHTWEIGHT FORGED ALLOY WHEEL IN SATIN BLACK | 6 | GLOSS BLACK WINDOW SURROUND |
| 2 | EXPOSED CARBON FIBRE FRONT SPLITTER, REAR DIFFUSER, SIDE SILLS, BONNET LOUVRE, REAR WING, LOWER FRONT BUMPER AND LOWER REAR BUMPER | 4 | BLACK, SILVER, GREY, YELLOW BRAKE CALIPERS                | 7 | BLACK HEADLAMP BEZEL FINISH |
|   |  | 5 | LIGHTWEIGHT BLACK MESH GRILLE                             | 8 | CLEAR REAR LIGHTS           |



## OPTIONS: WHEELS

### OPTIONAL UPGRADES

- 1 19" 7-SPOKE MAGNESIUM CENTRE-LOCKING WHEEL IN SATIN BLACK
- 2 19" 7-SPOKE LIGHTWEIGHT FORGED ALLOY CENTRE LOCKING WHEEL IN SATIN BLACK



### STANDARD WHEEL

- 3 19" 7-SPOKE LIGHTWEIGHT FORGED ALLOY WHEEL IN SATIN BLACK







# EXTERIOR OPTIONS: CARBON FIBRE

VANTAGE GT12'S LIGHTWEIGHT BODY REPRESENTS RACE-BRED FUNCTION AND ENHANCES SCULPTURAL BEAUTY. FOR A MORE ASSERTIVE LOOK, SPECIFY YOUR VANTAGE GT12 WITH A SELECTION OF OPTIONAL CARBON FIBRE FEATURES.

IF THE CARBON FIBRE FRONT GRILLE IS CHOSEN, OPT EITHER TO PAINT THIS STRIKING FEATURE OR LEAVE THE CARBON FIBRE EXPOSED.



## OPTIONAL UPGRADES

- 1 EXPOSED CARBON FIBRE TAILGATE AND REAR LAMP INFILLS
- 2 CARBON FIBRE FRONT GRILLE (INCLUDES CARBON FIBRE FRONT GRILLE PAINTED IN ORANGE IN CONJUNCTION WITH Q GRAPHICS PACK)
- 3 MACHINED CARBON FIBRE ASTON MARTIN WINGS BADGE
- 4 CARBON FIBRE ROOF  
CARBON FIBRE MIRROR CAPS\*

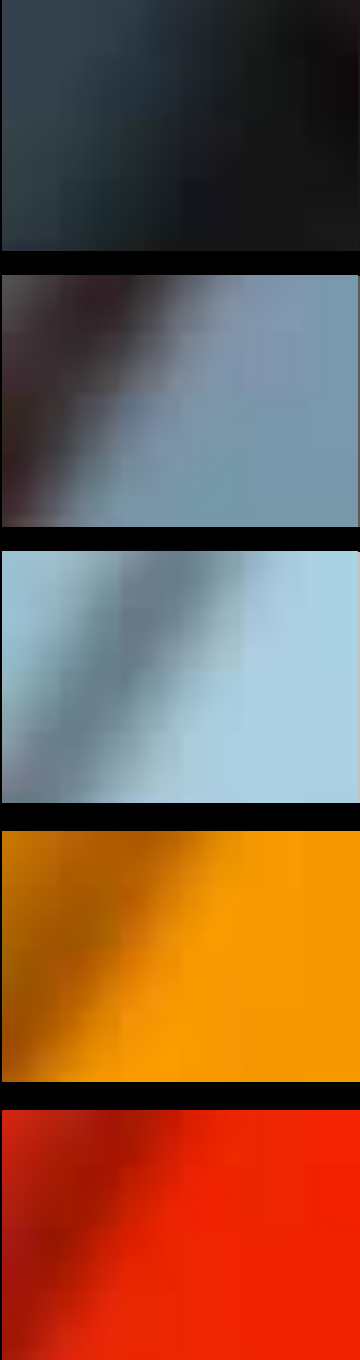
\* NOT ILLUSTRATED.





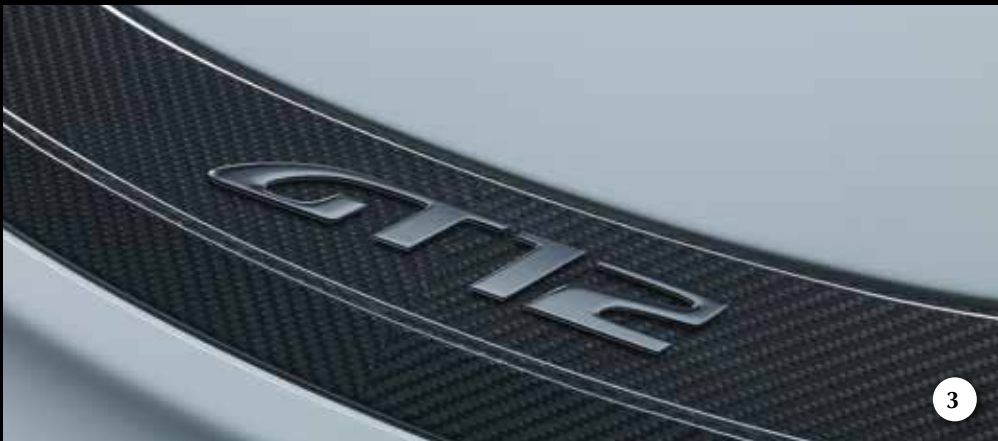
# EXTERIOR OPTIONS: CALIPERS

VANTAGE GT12'S BRAKE CALIPERS EXCLUSIVELY FEATURE THE RENOWNED BREMBO LOGO AND ARE OFFERED IN ONE OF FIVE COLOURS TO COMPLEMENT THE GRAPHICS PACKS.



CALIPER COLOURS  
STANDARD COLOURS  
BLACK, GREY, SILVER AND YELLOW  
OPTIONAL COLOUR  
ORANGE\*

\* AVAILABLE TO COMPLEMENT THE Q ORANGE GRAPHICS PACK



# EXTERIOR OPTIONS: DETAILS

A SELECTION OF ENHANCED EXTERIOR OPTIONS BRING RACE-INSPIRED DETAILING AND SHOWCASE OUR EXCEPTIONAL CRAFTSMANSHIP.

## HEADLAMP BEZEL

- 1 OPTION: SILVER FINISH
- STANDARD: BLACK FINISH\*

## REAR LIGHTS

- 2 OPTION: RED TAIL LAMPS
- STANDARD: CLEAR FINISH\*

## GT12 SPECIAL EDITION BADGES

- 3 OPTION: GT12 SPECIAL EDITION BADGE MOUNTED ON THE CARBON BONNET LOUVRE\*\*
- OPTION: GT12 SPECIAL EDITION DECKLID BADGE\*\*†

## WINDOW SURROUND

- OPTION: BRIGHT FINISH\*
- 4 STANDARD: GLOSS BLACK FINISH

## WINDOWS

- STANDARD: GLASS
- 5 OPTION: POLYCARBONATE REAR QUARTERS AND DECKLID WINDOWS, SAVE 3KG IN WEIGHT\*

\* NOT ILLUSTRATED. \*\* THIS OPTION IS OFFERED AT NO ADDITIONAL COST. † THIS OPTION CAN BE DELETED AT NO ADDITIONAL COST.

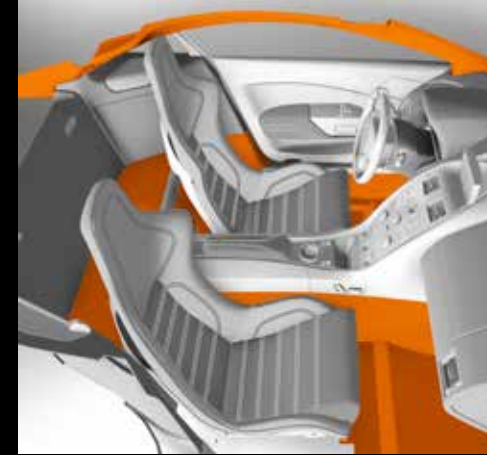
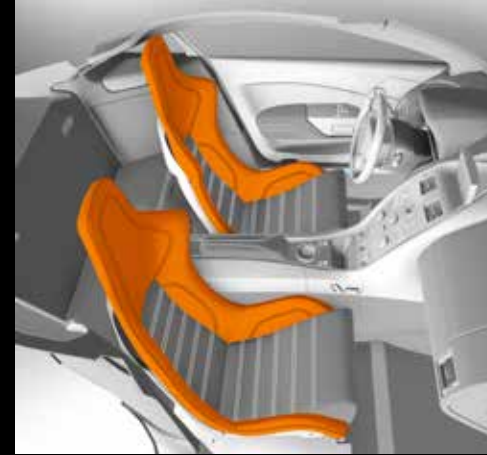
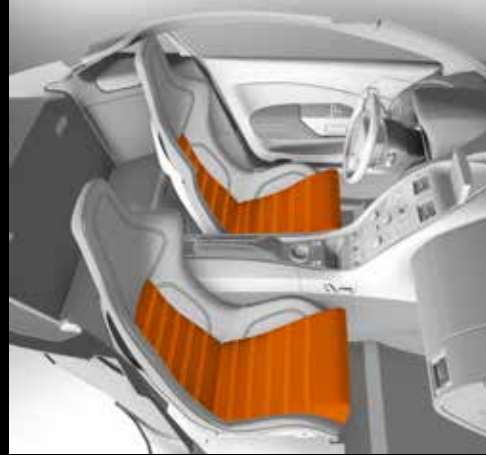
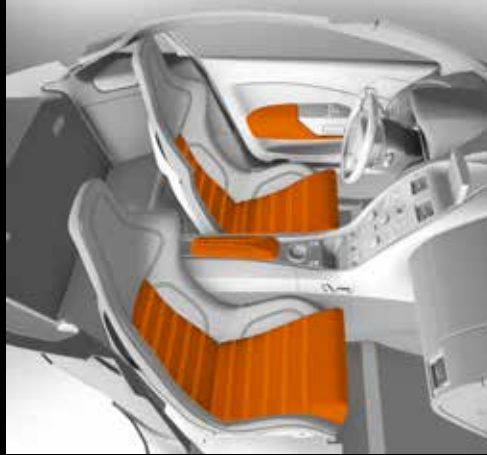
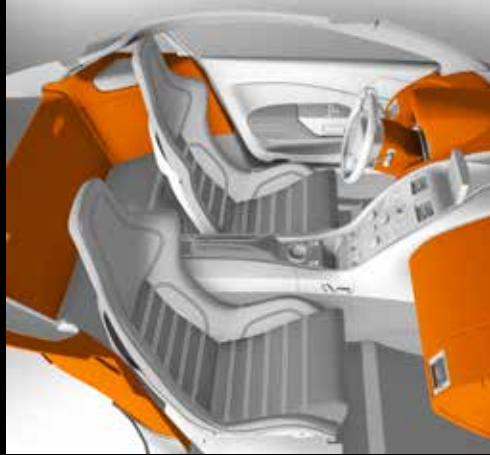




## INTERIOR OPTIONS

ASTON MARTIN'S EXQUISITE ATTENTION TO DETAIL AND CRAFTSMANSHIP SHAPES THE INTERIOR OF VANTAGE GT12. TRIMMED EXTENSIVELY IN ALCANTARA, THE TWO PRIMARY COLOUR THEMES, GREY BLEND ALCANTARA AND PURE BLACK,

CREATE A STRONG CONTRAST WITH THE EXPOSED CARBON FIBRE, PAYING HOMAGE TO THE ICONIC VANTAGE RACE CARS. SPORTING LEATHER ACCENTS AND CONTRAST STITCHING ADORN EVERY SURFACE.



## UPPER ENVIRONMENT

SELECT FROM:  
PURE BLACK ALCANTARA  
GREY BLEND ALCANTARA

**OPTIONAL UPGRADE**  
A FULL LEATHER UPPER ENVIRONMENT IS AVAILABLE AT AN ADDITIONAL PREMIUM.

STITCH:  
COARSE MATCHED TO ALCANTARA

**OPTIONAL UPGRADE**  
FOR LEATHER ENVIRONMENTS, CHOOSE A CONTRAST COARSE STITCH.

## LOWER ENVIRONMENT

SELECT FROM:  
PURE BLACK LEATHER  
ARGENTO GREY LEATHER  
SAHARA TAN LEATHER  
RACING YELLOW LEATHER  
CALIFORNIAN POPPY LEATHER

**OPTIONAL UPGRADE**  
OTHER LEATHER COLOURS ARE AVAILABLE FOR AN ADDITIONAL PREMIUM.

LOWER ENVIRONMENT STITCHING  
SELECT FROM:  
RAVEN BLACK  
GALENA SILVER  
SAHARA TAN  
YELLOW  
CALIFORNIAN POPPY

**OPTIONAL UPGRADE**  
OTHER STITCH COLOURS ARE AVAILABLE UPON REQUEST.

## SEAT INNER

THE SEAT INNER WILL FOLLOW THE LOWER ENVIRONMENT LEATHER COLOUR UNLESS OTHERWISE SPECIFIED.

TO ADD ANOTHER TOUCH OF PERSONALISATION, THE SEAT INNER SECTION CAN BE MATCHED TO THE UPPER ENVIRONMENT ALCANTARA COLOUR.

STITCHING IS ALWAYS MATCHED TO LEATHER OR ALCANTARA.

## SEAT OUTER

SELECT FROM:  
PURE BLACK ALCANTARA  
GREY BLEND ALCANTARA  
PURE BLACK LEATHER  
ARGENTO GREY LEATHER  
SAHARA TAN LEATHER  
RACING YELLOW LEATHER  
CALIFORNIAN POPPY LEATHER

**OPTIONAL UPGRADE**  
OTHER LEATHER COLOURS ARE AVAILABLE FOR AN ADDITIONAL PREMIUM.

SEAT OUTER STITCHING:  
MATCH OR CONTRAST FOR A SPORTY APPEARANCE IN A COARSE STITCH FOR BOTH LEATHER AND ALCANTARA.

## CARPET

VANTAGE GT12 IS FINISHED WITH LIGHTWEIGHT OBSIDIAN BLACK OR PHANTOM GREY CARPETS AS STANDARD, WITH MATCHING STITCHING AND BINDING.

## HEADLINING

THE ALCANTARA TRIMMED HEADLINING IS FINISHED IN EITHER PURE BLACK OR GREY BLEND TO MATCH THE UPPER ENVIRONMENT.

**OPTIONAL UPGRADE**  
FURTHER ALCANTARA HEADLINING OPTIONS ARE AVAILABLE WITH A FULL LEATHER INTERIOR ONLY.

## INTERIOR TRIM ACCENT

CONSISTS OF PADDLESHIFT INSERTS AND DOOR PULL LEATHER BACKING.

SELECT FROM:  
ARGENTO GREY LEATHER  
SAHARA TAN LEATHER  
RACING YELLOW LEATHER  
CALIFORNIAN POPPY LEATHER

THE INTERIOR TRIM ACCENT STITCHING WILL FOLLOW THE LOWER ENVIRONMENT STITCH COLOUR

**OPTIONAL UPGRADE**  
OTHER LEATHER COLOURS ARE AVAILABLE FOR AN ADDITIONAL PREMIUM.

# INTERIOR OPTIONS: CABIN ENVIRONMENT





## STANDARD INTERIOR: DESIGN DETAIL

### CENTRE CONSOLE FACIA

FORMED FROM EXPOSED CARBON FIBRE, CAREFULLY LACQUERED WITH A SATIN OR GLOSS FINISH, THE CENTRE CONSOLE INTEGRATES PERFECTLY WITH THE RACE-INSPIRED CABIN THEME.

### DOOR OUTER CASING

INSPIRED BY THE INTERIOR OF ASTON MARTIN'S GT3 RACE CARS, VANTAGE GT12'S DOOR OUTER CASING FEATURES GLOSS OR SATIN LACQUERED CARBON FIBRE.

### DOOR PULL STRAP

VANTAGE GT12'S DOOR PULL IS SHAPED FROM BLACK SADDLE LEATHER, ENHANCED WITH CONTRAST STITCHING.





1



3



2



4



5

## STANDARD INTERIOR: DESIGN DETAIL

1 EACH VANTAGE GT12 DISPLAYS AN UNDER-BONNET PLAQUE BEARING THE CAR'S COMMEMORATIVE NUMBER.

2 THE BLACK MAGNESIUM PADDLESHIFTS FEATURE LEATHER INSERTS TO PAIR WITH THE CHOSEN INTERIOR ACCENT UPHOLSTERY.

3 ANODISED RACING-STYLE PEDALS ARE FINISHED IN BLACK TO COMPLEMENT THE INTERIOR STYLING.

4 BESPOKE MACHINED CARBON FIBRE SILL PLAQUES FEATURING A GT12 SILVER FOIL INLAY.

5 GT12 LOGO EMBROIDERED INTO THE SEATS, EITHER TO MATCH OR CONTRAST THE SEAT OUTER COLOUR.

INTERIOR THEME  
GREY BLEND



COMBINATION ILLUSTRATED  
GREY BLEND ALCANTARA UPPER  
ENVIRONMENT AND SEAT OUTER  
ARGENTO GREY LEATHER  
LOWER ENVIRONMENT  
CALIFORNIAN POPPY STITCHING  
SATIN LACQUERED CARBON  
FIBRE FINISH FACIA AND DOOR  
OUTER CASING

		
Grey Blend Alcantara	Argento Grey Leather	Californian Poppy Stitching



INTERIOR THEME  
PURE BLACK



COMBINATION ILLUSTRATED  
PURE BLACK ALCANTARA UPPER  
ENVIRONMENT AND SEAT OUTER  
  
PURE BLACK LEATHER  
LOWER ENVIRONMENT  
  
CALIFORNIAN POPPY STITCHING  
  
GLOSS LACQUERED CARBON  
FIBRE FINISH FACIA AND DOOR  
OUTER CASING



Pure Black Alcantara      Pure Black Leather      Californian Poppy Stitching

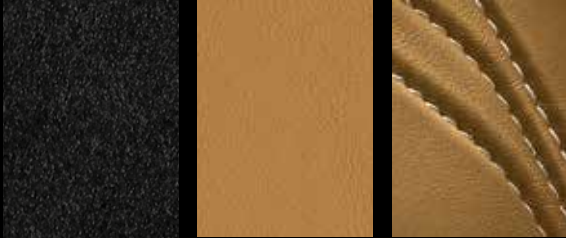




DESIGNERS' CHOICE  
INTERIOR THEME ONE

DESIGNERS' CHOICE  
INTERIOR THEME TWO

COMBINATION ILLUSTRATED  
PURE BLACK ALCANTARA  
UPPER ENVIRONMENT  
  
SAHARA TAN LEATHER LOWER  
ENVIRONMENT AND SEAT OUTER  
  
SAHARA TAN STITCHING  
  
SATIN LACQUERED CARBON  
FIBRE FINISH FACIA AND DOOR  
OUTER CASING



Pure Black Alcantara    Sahara Tan Leather    Sahara Tan Stitching

COMBINATION ILLUSTRATED  
GREY BLEND ALCANTARA UPPER  
ENVIRONMENT AND SEAT OUTER  
  
ARGENTO GREY LEATHER  
LOWER ENVIRONMENT  
  
YELLOW STITCHING  
  
SATIN LACQUERED CARBON  
FIBRE FINISH FACIA AND DOOR  
OUTER CASING



Grey Blend Alcantara    Argento Grey Leather    Racing Yellow Stitching





DESIGNERS' CHOICE  
INTERIOR THEME THREE

DESIGNERS' CHOICE  
INTERIOR THEME FOUR

COMBINATION ILLUSTRATED  
GREY BLEND ALCANTARA UPPER  
ENVIRONMENT AND SEAT OUTER  
RACING YELLOW LEATHER  
LOWER ENVIRONMENT  
YELLOW STITCHING  
GLOSS LACQUERED CARBON  
FIBRE FINISH FACIA AND DOOR  
OUTER CASING



Grey Blend  
Alcantara      Racing Yellow  
Leather      Racing Yellow  
Stitching

COMBINATION ILLUSTRATED  
GREY BLEND ALCANTARA UPPER  
ENVIRONMENT, SEAT OUTERS  
AND INNERS  
PURE BLACK LEATHER  
LOWER ENVIRONMENT  
CALIFORNIAN POPPY STITCHING  
SATIN LACQUERED CARBON  
FIBRE FINISH FACIA AND DOOR  
OUTER CASING



Grey Blend  
Alcantara      Pure Black  
Leather      Californian  
Poppy Stitching





1



3



6



2



4 5



7

## INTERIOR: OPTIONS & ACCESSORIES

### INTERIOR OPTIONS

- 1 OBSIDIAN BLACK LEATHER STEERING WHEEL\*
- 2 CARBON FIBRE PADDLESHIFTS
- 3 DELETE HEADREST EMBROIDERY\*
  - SMOKERS PACK
  - PARCEL SHELF\*

### TECH OPTIONS

- 4 B&O BEOSOUND AUDIO SYSTEM
- 5 BLACK B&O SPEAKER GRILLES
- 700W PREMIUM AUDIO SOUND SYSTEM
- REAR PARKING ASSIST CAMERA
- STEERING WHEEL TECHNOLOGY PACK
- ALARM UPGRADE WITH VOLUMETRIC AND TILT SENSORS
- AUTO DIM MIRROR WITH GARAGE DOOR OPENER

### SEAT OPTIONS

- 6 GT12 LIGHTWEIGHT SEAT WITH POWER ADJUST
- 7 AML FULL LEATHER SPORT SEAT

### ACCESSORIES

- VANTAGE GT12 TRACK PACK
- VANTAGE GT12 HELMET BAG
- CARBON FIBRE DIM SURROUND
- CARBON FIBRE CENTRE CAPS
- COLOUR KEYED INDOOR CAR COVER

\* COMES AS A STANDARD OPTION. ALL OTHER OPTIONS ARE AT AN ADDITIONAL COST.



BODY

TWO-SEAT, TWO-DOOR COUPE BODY STYLE

EXTRUDED BONDED ALUMINIUM  
VH BODY STRUCTURE

ALUMINIUM, MAGNESIUM ALLOY,  
COMPOSITE AND STEEL BODY

EXTRUDED ALUMINIUM DOOR  
SIDE-IMPACT BEAMS

CARBON FIBRE WIDE BODY WITH  
FLARED SILLS AND WHEEL ARCHES

CARBON FIBRE FRONT AND REAR BUMPERS

CARBON FIBRE COMPOSITE BONNET  
AND LOUVRE

TRACK AERO PACK – CARBON FIBRE  
EXTENDED FRONT SPLITTER AND REAR WING

HALOGEN PROJECTOR HEADLAMPS  
(MAIN BEAM)

HIGH INTENSITY DISCHARGE HEADLAMPS  
(DIPPED BEAM)

BLACK HEADLAMP BEZELS

LED REAR LAMPS

CLEAR REAR LAMPS WITH A BLACK BORDER

CARBON REAR DIFFUSER

CENTRE MOUNTED BLACK TEXTURED TAILPIPES

ENGINE

ALL-ALLOY, QUAD OVERHEAD CAMSHAFT

48-VALVE, 5935 CC, V12

MAGNESIUM INLET MANIFOLDS WITH  
REVISED GEOMETRY

FRONT MID-MOUNTED ENGINE,  
REAR-WHEEL DRIVE

LIGHTWEIGHT TITANIUM EXHAUST SYSTEM

COMPRESSION RATIO 11.0:1

MAX POWER TARGET 590 BHP / 600PS

MAX TORQUE TARGET 630NM @ 5500RPM

ACCELERATION TARGET  
0-60 MPH IN 3.5 SECONDS

MAXIMUM SPEED TARGET  
200 MPH

TRANSMISSION

REAR MID-MOUNTED, SPORTSHIFT III  
SEVEN-SPEED AUTOMATED MANUAL  
TRANSMISSION WITH ELECTRONIC  
SHIFT-BY-WIRE CONTROL SYSTEM

MAGNESIUM TORQUE TUBE WITH  
CARBON FIBRE PROPELLER SHAFT

LIMITED-SLIP DIFFERENTIAL

FINAL-DRIVE RATIO - 3.7:1

STEERING

RACK AND PINION, POWER-ASSISTED

COLUMN TILT AND REACH ADJUSTMENT

WHEELS & TYRES

19” 7-SPOKE FORGED ALLOY  
SATIN BLACK WHEELS

FRONT: 9.5J X 19” MICHELIN PILOT  
SUPER SPORT TYRES 265 FR

REAR: 11.5J X 19” MICHELIN PILOT  
SUPER SPORT TYRES 325 RR

TYRE PRESSURE MONITORING SYSTEM

TYRE REPAIR KIT

SUSPENSION

TRACK FOCUSSED SUSPENSION GEOMETRY  
WITH UPRATED SPRINGS AND REVISED  
DAMPER SYSTEM

FRONT: INDEPENDENT DOUBLE WISHBONES  
INCORPORATING ANTI-DIVE GEOMETRY,  
COIL SPRINGS, ANTI-ROLL BAR AND  
MONOTUBE DAMPERS

REAR: INDEPENDENT DOUBLE WISHBONES  
WITH ANTI-SQUAT AND ANTI-LIFT  
GEOMETRY, DUAL-RATE COIL SPRINGS  
AND MONOTUBE DAMPERS

REVISED 3-STAGE ADAPTIVE DAMPING  
SYSTEM (ADS) WITH NORMAL, SPORT  
AND TRACK MODES

BRAKES

FRONT: VENTILATED CARBON CERAMIC  
DISCS, 398 MM DIAMETER WITH SIX-PISTON  
MONOBLOC BREMBO VANTAGE GT12  
BESPOKE CALIPERS

REAR: VENTILATED CARBON CERAMIC DISCS,  
360 MM DIAMETER WITH FOUR-PISTON  
MONOBLOC BREMBO VANTAGE GT12  
BESPOKE CALIPERS

DYNAMIC STABILITY CONTROL (DSC)  
WITH ‘TRACK’ MODE

ANTI-LOCK BRAKING SYSTEM (ABS)  
WITH ‘TRACK’ MODE

ELECTRONIC BRAKEFORCE DISTRIBUTION (EBD)

EMERGENCY BRAKE ASSIST (EBA)

TRACTION CONTROL (TC)

MK25E BRAKE CONTROL MODULE

SPECIFICATIONS

STANDARD EXTERIOR SPECIFICATION

VANTAGE GT12 ‘RACE-INSPIRED’ PAINT LIVERIES  
BLACK, SILVER, GREY, YELLOW BRAKE CALIPERS  
LIGHTWEIGHT BLACK MESH GRILLE  
GLOSS BLACK WINDOW SURROUND  
REAR VANTAGE GT12 SPECIAL EDITION BADGE  
BLACK ENAMEL INFILL WINGS BADGE  
LITHIUM ION BATTERY (NOT COMPATIBLE WITH STANDARD BATTERY CONDITIONERS)  
ELECTRIC HEATED POWERFOLD MIRRORS  
HEATED REAR SCREEN  
BEAM BLADE FRONT WIPER SYSTEM  
RAIN SENSING WIPERS

STANDARD INTERIOR SPECIFICATION

ALCANTARA AND LEATHER ‘RACE-INSPIRED’ TRIM COLOUR SCHEMES  
LIGHTWEIGHT SEAT WITH MANUAL SEAT ADJUST  
CARBON FIBRE CENTRE CONSOLE  
EXPOSED CARBON FIBRE DOORS  
OBSIDIAN BLACK ALCANTARA STEERING WHEEL  
VANTAGE GT12 HEADREST EMBROIDERY  
COARSE STITCHING  
AML FAST TRACK HEADLINING ALCANTARA PALETTE  
AML FAST TRACK CARPET PALETTE  
CARBON FIBRE SPECIAL EDITION SILL PLAQUE

BLACK MAGNESIUM PADDLESHIFTS WITH LEATHER ACCENT INSERTS  
BLACK PEDALS  
GLASS CORPORATE SWITCHES  
GRAPHITE SPEAKER GRILLES  
DRIVER AND PASSENGER AIRBAGS  
PERIMETRIC ALARM SYSTEM  
IMMOBILISER  
ASTON MARTIN TRACKING BY COBRA – (MARKET SPECIFIC)  
AUTO-DIM REAR VIEW MIRROR  
ELECTRIC WINDOWS

IN-CAR ENTERTAINMENT AND CONVENIENCE

160 W ASTON MARTIN AUDIO SYSTEM  
DAB / DMB RADIO  
2 X USB CONNECTOR WITH WAVEFORM AUDIO FORMAT (WAF), WINDOWS MEDIA PLAYER (WMA) AND MPEG (MP3) AUDIO FILE COMPATIBILITY  
AMi II INFOTAINMENT SYSTEM  
BLUETOOTH CONNECTIVITY  
SATELLITE NAVIGATION

DIMENSIONS

LENGTH 4530 MM  
WIDTH 1914 MM (EXCLUDING MIRRORS)  
2070 MM (INCLUDING MIRRORS)  
HEIGHT 1245 MM  
WHEELBASE 2600 MM  
FRONT TRACK 1585 MM  
REAR TRACK 1583 MM  
FUEL CAPACITY 80 LITRES  
KERB WEIGHT TARGET 1565 KG

SPECIFICATIONS

EXTERIOR OPTIONS\*

- 7-SPOKE SATIN BLACK FORGED ALLOY WHEELS WITH CENTRE-LOCKING MECHANISM
- 7-SPOKE SATIN BLACK MAGNESIUM ALLOY WHEELS WITH CENTRE-LOCKING MECHANISM
- CARBON FIBRE ROOF
- CARBON FIBRE FRONT GRILLE
- CARBON FIBRE REAR TAILGATE AND LAMP INFILLS
- CARBON FIBRE MIRROR CAPS
- MACHINED CARBON FIBRE WINGS BADGES
- POLYCARBONATE REAR WINDOWS AND DECKLID WINDOW
- RED REAR TAIL LAMPS
- ORANGE BRAKE CALIPERS
- DELETE VANTAGE GT12 SPECIAL EDITION REAR DECKLID BADGE
- BRIGHT WINDOW SURROUND
- SILVER HEADLAMP BEZELS
- Q GRAPHICS PACK SCHEME
- Q GRAPHICS PACK PLUS SCHEME
- FRONT VANTAGE GT12 SPECIAL EDITION BADGE

INTERIOR OPTIONS\*

- GT12 LIGHTWEIGHT SEAT WITH POWER ADJUST
- AML SPORTS SEATS (INC SIDE AIRBAGS, ELECTRIC ADJUST & HEATED SEATS – LEATHER ONLY)
- LEATHER STEERING WHEEL
- CARBON FIBRE PADDLESHIFTS
- B&O BEOSOUND AUDIO SYSTEM (1000W)
- 700W PREMIUM AUDIO SOUND SYSTEM
- BLACK B&O SPEAKER GRILLES
- DELETE HEADREST EMBROIDERY
- PARCEL SHELF
- ALARM UPGRADE WITH VOLUMETRIC AND TILT SENSORS
- REAR PARKING ASSIST CAMERA
- AUTO DIM MIRROR WITH GARAGE DOOR OPENER
- STEERING WHEEL TECH PACK TO INCLUDE CRUISE CONTROL AND VOLUME ADJUST
- SMOKERS PACK
- SECOND GLASS KEY
- LEATHER ECU POUCH
- FIRST AID KIT

ACCESSORIES\*

- RACE SUIT, RACE SHOES, RACE GLOVES
- HELMET BAG
- CARBON DIM SURROUND
- COLOUR KEYED ECU POUCH
- INDOOR CAR COVER

OPTIONS & ACCESSORIES

\* OPTIONAL UPGRADES.



