



By appointment  
to HM The Queen  
motor car manufacturers  
Bentley Motors Limited  
Crewe Cheshire



By appointment  
to HRH The Prince of Wales  
motor car manufacturers  
Bentley Motors Limited  
Crewe Cheshire



BENTLEY

THE CONTINENTAL GT RANGE



Continental GT Speed and Continental GT Speed Convertible is available to order in all markets, except mainland China, and is currently not available in EU27, UK, Switzerland, Israel, Ukraine, Norway, Turkey and Vietnam.

INTRODUCTION <sup>03</sup>/ DESIGN <sup>09</sup>/ PERFORMANCE <sup>14</sup>/  
TECHNOLOGY <sup>20</sup>/ INTERIOR <sup>28</sup>/  
PERSONALISING YOUR CAR <sup>32</sup>/ WORLD OF BENTLEY <sup>48</sup>/  
SPECIFICATIONS AND OPTIONS <sup>51</sup>



## The future starts here.

The Continental GT represents the future of grand touring.

With sleek lines carving a sharp path through the air, this astonishing car marks the beginning of a new era: one of unrivalled power, exquisite craftsmanship and cutting-edge automotive technology.

Whether you choose the groundbreaking coupé or the most finely crafted convertible of our time, whether you opt for the refined exhilaration of the W12 engine or the confident dynamism of the V8 engine, the Continental GT makes every journey extraordinary.

Continental GT V8 Convertible  
WLTP drive cycle: fuel consumption,  
mpg (l/100km) – Combined 22.6 (12.5).  
Combined CO<sub>2</sub> – 284 g/km.





## A journey that never ends.

When it first emerged, the Continental GT was revolutionary. Building on the glorious reputation established by the classic R-Type Continental, it became a symbol of everything a grand tourer should be, embodying Bentley's unique blend of exquisite style, unrivalled craftsmanship and thrilling power.

But the journey didn't end there. Bentley is always looking to the future, seeking new innovations that push the boundaries of what is achievable, in order to make tomorrow's experience even more exciting than today's. And so the Continental GT was reborn.

State-of-the-art technologies have been integrated throughout to enhance the driving experience, without ever overpowering it. Inside the cabin exceptional attention to detail ensures unmatched comfort.

The open road beckons – and wherever you choose to travel, the Continental GT will take you there in unprecedented style.

Continental GT Speed and Continental GT Speed Convertible is available to order in all markets, except mainland China, and is currently not available in EU27, UK, Switzerland, Israel, Ukraine, Norway, Turkey and Vietnam.





## The Continental GT V8.

With a lively and responsive V8 engine, the Continental GT V8 provides breathtaking acceleration whenever you need it, for an irresistibly engaging driving experience.

Accompanying this animated drive is the distinctive Bentley V8 sound. The rewarding burble becomes gratifyingly intense as you accelerate, and is particularly potent in Sport mode.

Bold, contemporary details reflect the car's dynamic performance. Elliptical quad tailpipes add a dramatic touch at the rear, while striking 21" five tri-spoke wheels enhance the already stunning profile.

Inside the car, a single hide colour is used throughout to create a simple yet elegant look, while the optional Colour Specification opens up a wealth of additional possibilities that allow you to make your car truly your own.

Wherever your destination lies, you can be sure of a captivating journey in the Continental GT V8.

Continental GT V8 WLTP drive cycle: fuel consumption, mpg (l/100km) – Combined 23.3 (12.1). Combined CO<sub>2</sub> – 275 g/km.





## The Continental GT Speed.

With its W12 engine and unique transmission calibration, the Continental GT Speed harnesses true power whilst delivering the ultimate GT performance experience – all felt from within a luxurious cabin of unparalleled craftsmanship, technological innovation and precision detail.

The enhanced chassis system features rear-wheel steering and torque vectoring combined with the Continental GT's dynamic ride system. These enhancements ensure agility in all road and weather conditions, leaving you to experience the essence and exhilaration of grand touring, done the Bentley way.

This peerless performance is unleashed to its full potential in Sport mode. In this mode, the car responds to your exact requirements, creating a feeling of uncompromising control, accompanied by the distinctive roar emanating from the two oval exhausts to set the soundtrack to your journey.

The bold Continental GT Speed possesses an array of distinguishing features that hint at its true sporting credentials. Sleek Speed badging can be seen on the front fenders, as well as the fascia. 'Speed' detailing also features on the treadplates and hand-embroidery on the head-rests, showcasing that no detail is ever too small.

Exclusive silver painted Speed 22" wheels add to the dramatic and commanding road presence of this vehicle, while the Dark Tint granite-painted radiator, lower bumper and matrix-style grilles also convey the invigorating nature and powerful stance of the Continental GT Speed.

Whether you are tempted by the coupé or convertible body styles, the Continental GT Speed pushes the boundaries of performance, giving drivers and passengers the opportunity to experience true driving joy in every sense.

Continental GT Speed and Continental GT Speed Convertible is available to order in all markets, except mainland China, and is currently not available in EU27, UK, Switzerland, Israel, Ukraine, Norway, Turkey and Vietnam.





# The Continental GT Mulliner.

The Continental GT Mulliner is the quintessential incarnation of a grand tourer. It elevates the essence of a GT with breathtaking attention to detail in a celebration of the Bentley Mulliner team's unrivalled craftsmanship. Truly, this is the pinnacle of grand touring.

This attention to detail is evident from the moment you open your personalised key presentation box. From there, a world of bespoke luxury is unlocked. The interior lighting can be adjusted to suit your changing requirements – creating a perfectly personalised drive. Beautiful ornate finishes, from the vehicle silhouette overlays on the Piano veneers, to the Diamond Milled technical finish on the centre console, celebrate Bentley Mulliner's long tradition of coachbuilding and customisation.

Every element has been thoughtfully curated down to the finest details, such as the Breitling clock face and the Satin Silver mirror caps. There is also an exclusive selection of three-colour seating and trim combinations – enabling you to apply your own aesthetic to the Continental GT Mulliner.

The exterior boasts subtle, yet essential cues to the exclusive nature of the Continental GT Mulliner; including Mulliner illuminated door sills and Mulliner wing vents. This is

accentuated with the 22" Mulliner wheels with self-levelling badges.

Whether you choose the coupé or convertible, every driver can go on their own exhilarating journey.

Continental GT Mulliner range WLTP drive cycle: fuel consumption, mpg (l/100km)  
– Combined 22.6 - 23.3 (12.1 - 12.5).  
Combined CO<sub>2</sub> – 275 - 284 g/km.







## A choice of convertible or coupé.

The Continental range is available in two equally exquisite body styles.

The coupé could be considered the quintessential British grand tourer: sleek, exquisitely crafted, with unrivalled presence on the road. The convertible model is built on everything that makes the coupé great – with the option to drop the roof at the touch of a button and experience the exhilaration of an open-top Bentley.

Whether you prefer to cut through the air or embrace it, you will enjoy breathtaking performance and generous space for your passengers and luggage, whichever body style you choose.

Continental GT Speed and Continental GT Speed Convertible is available to order in all markets, except mainland China, EU27, UK, Switzerland, Israel, Ukraine, Norway, Turkey and Vietnam.



# DESIGN



Continental GT V8 WLTP drive cycle: fuel consumption,  
mpg (l/100km) – Combined 23.3 (12.1). Combined CO<sub>2</sub> – 275 g/km.



## A grand design.

The Continental GT range represents a dramatic new interpretation of Bentley's design language.

In developing these stunning cars, the vision was to completely reassess the grand tourer, in both its coupé and convertible forms. What has emerged is powerful, luxurious and entirely new – a stunning example of automotive beauty.

A short front overhang and long bonnet complement classic grand tourer proportions, while the sweeping 'power line' – a feature of every Bentley – emerges confidently from between the headlamps, before tracing its path along the side of the car to the muscular rear haunch. The convertible accommodates its fabric roof in streamlined style, looking sleeker than ever, whether the top is up or down.

Even when stationary, the Continental GT looks dynamic. This is a car that, regardless of your chosen body style, evokes a sense of both elegance and speed.







## Unprecedented strength and unrivalled style.

The body of the Continental GT is crafted from aluminium, steel and advanced composite materials, for remarkable strength and stunning visual impact.

Its sculptural and sharply defined form is made possible by superforming technology, a precision technique that involves heating aluminium panels to 500°C. This is the first time it has ever been used for whole side panels on a car of this size. It has also enabled the design team to eliminate the B-pillar between the front and rear side windows, for an even sleeker appearance.

A beautifully integrated fixed glass roof is also available\*. Featuring an electrically-operated Alcantara blind matched to your chosen headliner colour, it allows outside light to cascade in when open, giving occupants an even greater connection with the car's environment.

Unlike the rest of the car, the boot lid is crafted from composite materials, which means the aerial can be positioned beneath the surface, without being insulated. This allows you to stay connected to radio, TV and phone signals through My Bentley services, with no need for an unsightly external antenna. The Continental GT is a true leap forward in contemporary grand tourer design.

## The finest details.

Every exterior detail has been carefully crafted to enhance the overall aesthetics of the Continental GT range.

LED matrix beam headlamps are set into polished chrome bezels. Designed to resemble illuminated gemstones when lit, their intricate interior patterns were inspired by cut-crystal glassware. The result is even more striking when they fade up to welcome you on your approach to the car.

The door mirrors, front grilles and badges are all finished in chrome to match, as are the 'Bentley' wording on the boot and the winged 'B' badges on the boot, the bonnet and the wheels. The backs of the chrome door handles, meanwhile, feature knurled surfaces – a thoughtful touch that aids grip.

At the rear, pairs of elliptical tail lamps glow red with the same cut-crystal effect, emphasising their three-dimensional depth. Their shape is reflected in the oval tailpipes beneath – two large elegant tailpipes on cars with a W12 engine, and four smaller ones on those with a V8 engine.

The two engine types are further differentiated by the positioning of the badges, with the V8 badge appearing on the fender, while the W12 badge is found on the fender vent. Consider it one more example of Bentley's unmatched attention to detail.

Continental GT V8 WLTP drive cycle: fuel consumption, mpg (l/100km) – Combined 23.3 (12.1). Combined CO<sub>2</sub> – 275 g/km.







## Elegant in every landscape.

The exquisite interior features in the convertible are amplified when the roof descends.

Particular attention has been paid to the fusion of interior and exterior design on display when the roof is open.

The sleek veneers that encircle the cabin sweep into the doors, emphasising both the interior space and exterior curves such as the haunch line. The redesigned roof closure mechanism and low tonneau cover allow for a stylish, streamlined appearance with the roof down.

With a wide range of interior and exterior colours to choose from, this is a remarkable opportunity to create your perfect Bentley – one guaranteed to stand out.

Continental GT V8 Convertible  
WLTP drive cycle: fuel consumption,  
mpg (l/100km) – Combined 22.6 (12.5).  
Combined CO<sub>2</sub> – 284 g/km.

# PERFORMANCE



Continental GT Mulliner Convertible WLTP drive cycle: fuel consumption,  
mpg (l/100km) – Combined 22.6 (12.5). Combined CO<sub>2</sub> – 284 g/km.





## Effortless power.

Built exclusively at Bentley Motors in Crewe, England, the 6.0 litre W12 engine in the Continental GT Speed embodies the next generation of Bentley drivetrain innovation.

With a maximum power output of 650 bhp (659 PS / 485 kW) and torque of 664 lb ft (900 Nm), it can propel the car from

0 to 60 mph in a phenomenal 3.5 seconds (0 to 100 km/h in 3.6 seconds) – and on to an astonishing top speed of 208 mph (335 km/h).

The unique Speed engine and transmission calibration delivers a fast response, astonishing power and sharp gear changes. This, combined with the new weight balance, provides an

uncompromising delivery of acceleration and control for those behind the wheel.

Effortless, seemingly limitless acceleration like this has long been a Bentley hallmark. With the Continental GT, it is pushed to new heights, for performance unmatched in the world of the grand tourer.

Continental GT Speed and Continental GT Speed Convertible is available to order in all markets, except mainland China, and is currently not available in EU27, UK, Switzerland, Israel, Ukraine, Norway, Turkey and Vietnam.



## Breathtaking acceleration.

The Continental GT V8 offers irresistibly dynamic performance.

The responsive 4.0 litre V8 engine lets you accelerate from 0 to 60 mph in 3.9 seconds (0 to 100 km/h in 4.0 seconds) and on to an exhilarating top speed of 198 mph (318 km/h)\*.

The Continental GT V8 Convertible, meanwhile, can take you from 0 to 60 in 4.0 seconds (0 to 100 km/h in 4.1 seconds), and achieves the same top speed as the coupé\*.

This is the lightest Continental GT to date, with twin-scroll turbochargers located in the 'V' of the engine helping to increase responsiveness still further. The characteristic burble of a Bentley V8 engine is unmistakable, and is especially satisfying in Sport mode.

An involving, agile drive is at the heart of the Bentley V8 experience, and the Continental GT V8 takes it to a thrilling new level.

Continental GT V8 Convertible  
WLTP drive cycle: fuel consumption,  
mpg (l/100km) – Combined 22.6 (12.5).  
Combined CO<sub>2</sub> – 284 g/km.







## Advanced powertrain technology.

Whichever powertrain you select, you'll benefit from a dual-clutch, eight-speed transmission.

Delivering much faster, smoother gear shifts than a traditional automatic gearbox, it makes the most of the engine's phenomenal capabilities, maximising fuel economy while propelling the car forward with a smooth, seamless surge of acceleration.

In Sport mode, gear changes are fastest, delivering an uninterrupted flow of torque and truly thrilling acceleration. In Comfort mode, the changes are slowed slightly, to allow for an incredibly smooth ride.

The Active All-Wheel Drive system delivers rear-wheel drive under regular conditions, but when required, it also feeds instantaneous power to the front axle for complete driving confidence. Featuring a map-controlled, electronic multi-plate clutch, its sensors constantly monitor the rotation of each wheel. By combining this data with the overall velocity and lateral movement of the chassis, the car can respond to changes in road conditions instantaneously.

The most formidable power of the range can of course be experienced with the Continental GT Speed. Combining all of the above with the addition of all-wheel steering and electronic torque vectoring, the Speed delivers increased cornering dynamics – ideal for the twists and turns of any journey. This grand tourer's responsiveness is further amplified by the optional Carbon Ceramic brakes for stopping power derived from aerospace technology. The result is best experienced in person to be believed.





## Designed to be driven.

The Continental GT has been designed from the ground up to deliver truly impressive handling, without compromise to the refined ride for which Bentley is famous.

The engine sits low over the front axle for optimum weight distribution, resulting in exceptional handling and agility – which is particularly apparent with the Continental GT Speed calibration.

On the Continental GT V8, a passive chassis with fixed anti-roll bars provides an ideal balance between comfort and handling. Its W12 counterpart enjoys Bentley Dynamic Ride\*, an innovative 48 V electronic active roll control system that continuously adjusts the anti-roll bars, for reduced body movement and a supremely smooth ride.

Large, wide wheels ensure a greater contact area with the road surface at all times – critical

when accelerating or braking. They are also wider at the back, for improved traction and cornering balance.

The electromechanical power steering feels agile and effortless, with the entire car tuned to deliver stability through corners, ensuring unmatched comfort for all occupants.

To optimise aerodynamic performance on the coupé, an integrated rear spoiler emerges

automatically at a pre-determined speed to aid high-speed performance. It can also be operated manually.

Continental GT Speed and Continental GT Speed Convertible is available to order in all markets, except mainland China, EU27, UK, Switzerland, Israel, Ukraine, Norway, Turkey and Vietnam.





## Drive it your way.

The driving characteristics of the Continental GT can be customised to suit your personal style and mood.

As the first car in the Bentley range to incorporate a three-chamber, air-spring suspension, it combines extraordinary handling with a remarkably refined, luxurious ride.

The Bentley Driving Mode system offers four driving modes. Comfort optimises the chassis and drivetrain for luxurious cruising and the feeling that you're driving on air. Sport, on the other hand, retunes the engine instantly for a sharper, more dynamic response. The active suspension and chassis settings are also altered, delivering harder damping and more direct steering turn-in, for more agility and a truly thrilling drive.

The Bentley mode, meanwhile, provides the optimum combination of both. And there is also the Custom mode, which allows the driver to specify their own setting for powertrain response, handling and steering.

All four Bentley Driving Modes are easily accessible via a knurled control dial in the centre console. It's just one more example of Bentley's unrivalled attention to detail.



# TECHNOLOGY



Continental GT V8 WLTP drive cycle: fuel consumption, mpg  
(l/100km) – Combined 23.3 (12.1). Combined CO<sub>2</sub> – 275 g/km.



## An intuitive in-car experience.

The Continental GT is equipped with state-of-the-art technology, inside and out.

A 12.3" high resolution touchscreen sits in the centre of the fascia, providing both driver and passenger with access to a cutting-edge infotainment system. The wide screen can be split into two or three independent windows – providing key interface and navigation for the driver, while allowing the front seat passenger to use other functions such as selecting music tracks or controlling the heating and ventilation system. And thanks to a built-in proximity sensor, relevant on-screen icons are highlighted whenever a hand nears the screen, making the system even easier to use on the move.

## Information at your fingertips.

A high-resolution digital display behind the steering wheel shows an easy-to-read speedometer and rev counter, with digital chrome bezels and super-fine pointers.

In Expanded mode, one gauge can be minimised to show trip computer data, the map or details of any media currently playing, while an optional Head-Up Display can display important driver information on the windscreen itself, including your speed, the speed limit and directions from the navigation system.



## Intuitively connected.

A suite of connected services in the Continental GT use real-time information to make your journey safer, smarter and more convenient.

With a built-in Wi-Fi hotspot, you and your passengers can stay connected via your personal devices and the Apple CarPlay®-enabled infotainment system.

Real-time traffic information incorporates up-to-the-minute traffic data into the navigation system, enabling you to plan your journeys more effectively. Point of Interest search also gives you easy, voice-controlled access to information about notable locations you may encounter on the way.

In the event of an accident, Private eCall\* will connect you to an emergency call centre. If you ever break down, Roadside Assistance Call provides direct contact with the Bentley Roadside Assistance team.

You can even check on your car when you're elsewhere. My Car Status, a feature accessed via the My Bentley smartphone app, provides useful information about your vehicle's status, wherever you are.







## The Bentley Rotating Display.

A world first, the optional Bentley Rotating Display\* is a unique demonstration of Bentley's remarkable approach to technology and craft – one that allows you to personalise the car's instrumentation according to your preferences.

When the engine roars into life, a veneered section of the fascia physically rotates to reveal the 12.3" high-resolution touchscreen. Designed for unrivalled ease of use, the touchscreen features a proximity sensor that highlights the on-screen controls as you reach towards it.

The screen can be configured to display the information of your choice, while a home screen display mode allows you to see up to three screens at once. For example, you may view the navigation map, music controls and your mobile phone call list.

For a more classic instrumentation style, a further rotation reveals another veneered fascia panel, this one including three analogue dials with polished chrome bezels. A final reverse-rotation brings back the initial, veneer-only surface – for a clean, sleek look.



## All the assistance you expect.

A comprehensive suite of assistance systems allows the driver to enjoy the very latest automotive technology.

Adaptive Cruise Control\* regulates the speed of the car, relative to the vehicle in front. Radar sensors scan the road ahead, enabling you to maintain your chosen speed. If the car in front slows, so does yours – right down to a stop, if required. When the traffic begins to move again, your car will accelerate to your selected cruising speed – and all without your feet ever touching the pedals.

Blind Spot Assist monitors the area immediately to the sides and the rear of the car. If you attempt to move into a lane in which another vehicle is approaching, a visual warning is displayed on the exterior mirror. Lane Assist\* uses a video camera to detect any drifting across lane boundaries, making small corrections as necessary.

Integrated Traffic Sign Recognition\* detects speed limits and zones in which overtaking is prohibited. The information is displayed in the digital instrument cluster and the Head-Up Display\*, if fitted. Even temporary speed restrictions can be detected.

With the Park Distance function, the car sounds a warning whenever it gets too close to a parked vehicle at the front or the rear. An accompanying visual warning appears on the touchscreen, alongside the view from the rear-facing camera. Park Assist searches for a suitable car parking space and then will operate the steering wheel with the driver controlling the brake and accelerator to park the car in that space.

Three more cameras fitted around the car enable it to display a 360-degree view\*. You can even opt to see the view from each one, when negotiating tight parking spaces.

With Rear Crossing Traffic Warning and Exit Warning among an extensive suite of driver assistance features, this is a car you can drive with complete confidence at all times.

\*Cost option.



\*Cost option.





## A car that sees in the dark.

Intelligent LED matrix\* beam headlamps – featured in a Bentley for the first time – allow the main beam to be used continuously, with no intervention.

The matrix itself comprises 55 individually controlled LEDs, each one capable of switching on, switching off, or dimming, as required. Central sections of the main beam will deactivate when oncoming traffic is detected, while the rest of the LEDs illuminate the road ahead.

The system will automatically optimise the beam for different conditions – on the highway, in the city or in the country – and the LEDs will even dim to stop the light reflected from road signs dazzling the driver.

An optional Night Vision camera can aid driving in poorly lit environments, by alerting the driver to obstacles beyond the range of the headlamps. An infrared camera detects the presence of obstacles that emit heat, highlighting them on the instrument digital display.



## Make the most of every season.

Come rain or shine, there is no better car than the Continental GT Convertible.

Available in a choice of stunning colours and fabrics, the four-layer roof is so secure and well-insulated when closed that it's easy to forget you're in a convertible.

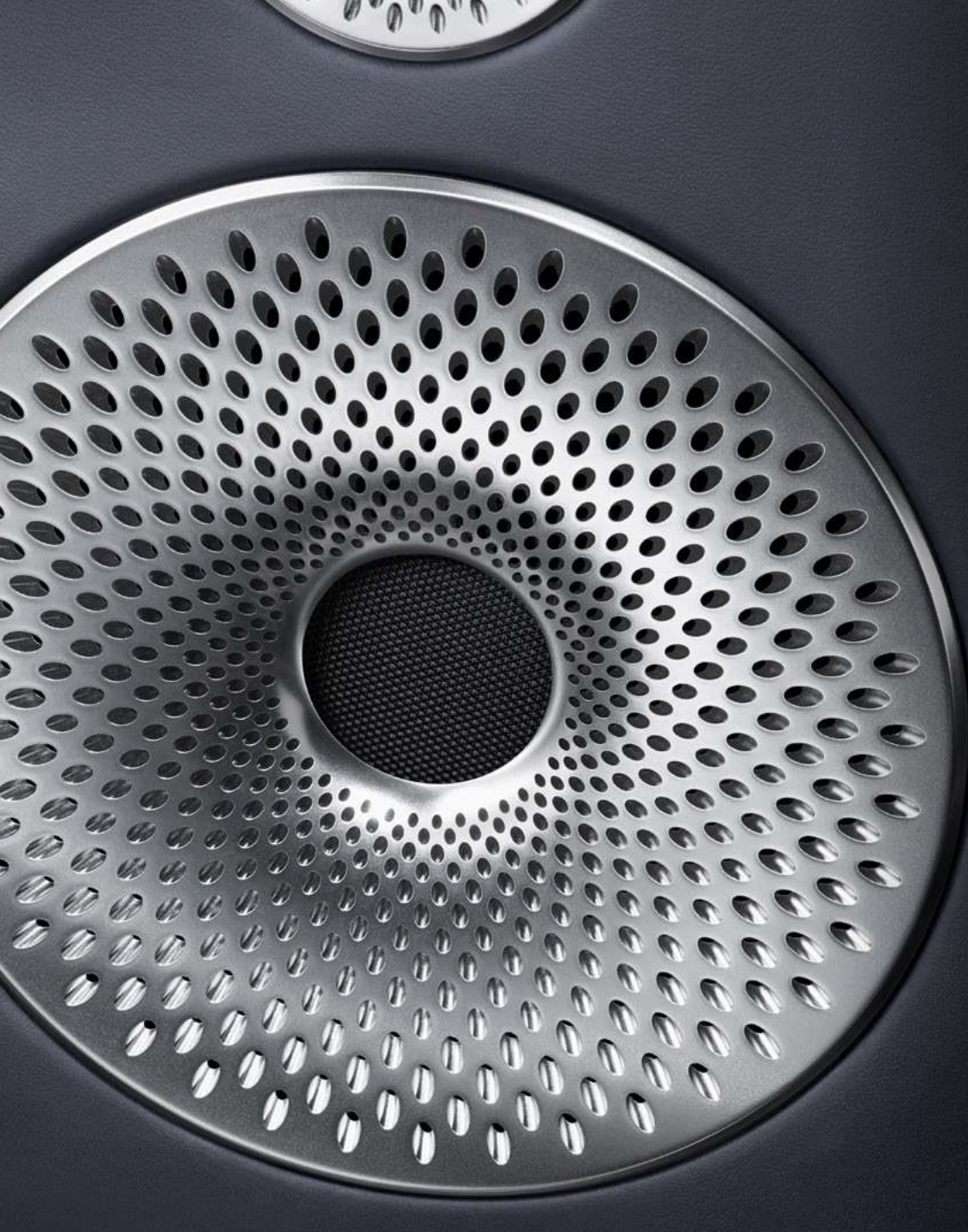
It can be lowered quickly at the touch of a button, even when driving at speeds of up to 30 mph (50 km/h) – so you'll never need to stop when the sun comes out.

To complement the blissful sensation of wind in your hair, both the driver's seat and front passenger seat can include cooling functions, to keep backs and legs comfortable, even on the hottest afternoons. The coldest days can also be enjoyed with the top down, thanks to the option of a heated front armrest and a neck warmer in each front seat. Elegantly integrated into the optional Comfort Seats, the neck warmer gently circulates warm air around your neck and shoulders.

Whatever the conditions, there's no better way to experience the open road.







## Audio and in-car ambience.

The Continental GT can be commissioned with a choice of three audio systems. The standard system with 650 Watts is tuned by Bentley, or you can choose from either the 1,500 Watt Bang & Olufsen for Bentley audio system with BeoSonic sound control or the 2,200 Watt Naim for Bentley system with active bass for the ultimate audio experience.

An active carbon filter traps dust, pollen and other particles, ensuring the atmosphere inside remains fresh at all times. An optional ioniser can be chosen for even cleaner air.

## Sustainability by design.

For all its thrilling performance, the Continental GT has been engineered for a sustainable future.

Auto start/stop, advances in thermal management, electrical system recuperation and the dual-clutch transmission all play their part in reducing emissions, as does active cylinder deactivation, otherwise known as Variable Displacement. When the engine's control processor detects a light throttle opening, it closes the valves on half of its cylinders. The remaining cylinders then operate more efficiently, using less fuel. The moment the throttle opening widens again, the engine switches back to full capacity and the car accelerates again, with no detriment to performance.

A raft of innovations ensure that the Continental GT's emission levels are among the best in its class. It can even run on fuels with an ethanol content of up to 10%.

Bentley was founded on the principle of innovative engineering – and the invention of its founder, W.O. Bentley, drove its early success. The Continental GT continues that pioneering tradition, with a suite of technological advances that push the grand tourer beyond established limits.



# INTERIOR



Continental GT V8 WLTP drive cycle: fuel consumption, mpg  
(l/100km) – Combined 23.3 (12.1). Combined CO<sub>2</sub> – 275 g/km.





## Inspired interior design.

The cossetting interior of the Continental GT embraces new technology like no other Bentley before it, while accentuating the unrivalled comfort and ambience for which Bentley interiors are renowned.

As with all models, the interior design began with a fascia built around the Bentley symmetrical 'wings' emblem. This time, the design team took the metaphor further.

A powerful centre console runs between four incredibly comfortable, newly designed Continental GT seats. It rises smoothly into the fascia, with an uninterrupted flow of wood sweeping around the driver and passengers.

The fascia panels themselves can be specified with a choice of exquisite single veneers or an extraordinary feature unique to the Continental GT: distinct dual veneers.

To showcase Bentley's unmatched attention to detail, the designers have selected a striking range of hides and interior colourways – which doesn't stop at the seats. The handcrafted leather extends to a unique 'floating' leather dashboard, which flows seamlessly into the door casings.

A new diamond knurling design reflects the light beautifully, allowing for a soft, refined feel to the controls, while subtle bronze-coloured inserts provide the perfect finishing touch. In the rear, the interior design reflects that of the car's powerful haunches, evoking a unique connection between the interior and the exterior.

Throughout the car, there is emphasis on authentic and unique materials, such as an optional centre console inspired by the 'Côtes de Genève' finish found inside the finest watches.





## A place for everything.

Every control in the Continental GT has been positioned with great thought, so everything from the seats to the air conditioning can be operated intuitively, even while driving.

Storage has been cleverly integrated into the interior design, with space for a smartphone or wallet located in either side of the centre console. A covered cup holder sits behind the gear lever and the door storage has the capacity to hold a one-litre bottle. Twin USB ports can be found in the discreet space beneath the front armrest – perfect for storing and charging your digital devices – with inductive charging available as an option.



## Seat of power.

Every seat in the Continental GT has been designed to provide the ultimate in support and comfort – as you would expect from a car with grand touring in its blood.

Hand-stitched in grade-A leather hides, they have been designed to resemble sleek sports seats, without compromising on comfort. The standard, heated 12-way adjustable front seats feature two memory settings each, while for the ultimate in driving luxury, the optional Front Seat Comfort Specification offers a 20-way seat with electrically adjustable headrests and bolsters, alongside ventilation and multiple massage modes.

The 'diamond-in-diamond' quilting pattern, part of the Mulliner Driving Specification, lends a truly soft, cushioned feel to the bolsters and upper areas, while the perforated centre panels are exceptionally smooth, for optimal performance of all heating, ventilation and massage functions. And just like every other switch in the car, the seat controls have been thoughtfully placed: the memory selectors are located in the door pads, so you can choose your preferred seating position before you even sit down.

Continental GT Speed and Continental GT Speed Convertible is available to order in all markets, except mainland China, and is currently not available in EU27, UK, Switzerland, Israel, Ukraine, Norway, Turkey and Vietnam.





# PERSONALISING YOUR CAR





## A true collaboration.

Since 1919, Bentley cars have been a collaboration between the exceptional people who make the cars and the remarkable people who commission them. That tradition continues with the Continental GT.

With every car built by hand at the Bentley factory in Crewe, the opportunities to make your car your own are practically limitless. An extensive range of options sees the best of traditional and contemporary materials combined with the latest production techniques and time-honoured Bentley craftsmanship.

One such option is the Mulliner Driving Specification, which introduces a unique 22" wheel, as well as a carefully curated collection of handcrafted features, including Bentley's unique 'diamond-in-diamond' leather quilting, heated, duo-tone, 3-spoke, indented hide-trimmed steering wheel\* and sports pedals.





## Mulliner Personalisation.

The very first drivers bought a vehicle comprising just an engine, drivetrain, four wheels and a set of controls. The rest required a coachbuilder, such as Mulliner. Still, today, no-one is better placed to help make your car an expression of your unique style.

Mulliner personalisation is virtually limitless. For instance, the colour of any object in your possession can be matched to create your own personal paint colour. The same is true for your hides – any colour you can find, or dream, can be perfectly matched and made for you only.

Mulliner also creates personalised embroidery for your seats, handstitched from any design of your choosing. Not to mention exquisite marquetry inlays to your veneers, manifesting your unique vision through timeless artisan craft.





## Exterior finish.

Colour can be a powerful expression of who you are. That's why we offer a wide range of exterior colours that have been carefully curated by the Bentley design team, each one chosen specifically to emphasise the sleek lines of the Continental GT and give it a unique presence on the road.

There are 7 standard exterior colours for the Continental GT V8, and 16 for the Continental GT Speed, with a further 42 colours in the extended range. In addition, a new palette of Mulliner paints adds a vast range of solid, metallic, satin and pearlescent options, while Personal Commission Paint by Mulliner allows you to match a colour that is as unique as you are. The only limit is your imagination.

## Standard Speed colours.

- Beluga (Solid)
- Dark Cashmere
- Dark Sapphire
- Glacier White (Solid)
- Granite
- Hallmark
- Havana
- Marlin
- Meteor
- Midnight Emerald
- Moonbeam
- Onyx
- Patina\*
- Portofino
- St. James' Red (Solid)
- Thunder

## Standard V8 colours.

- Beluga (Solid)
- Dark Sapphire
- Glacier White (Solid)
- Moonbeam
- Onyx
- St. James' Red (Solid)
- Thunder



\*This feature is not available in all markets.  
Please contact your local retailer for availability.





## Wheels.

The Continental GT Speed has a stunning 22" wheel as standard which is Silver Painted, while the Continental GT V8 comes with a striking 21" five tri-spoke wheel.

A range of optional 21" wheels allow you to enhance the exterior still further and, for even greater road presence, 22" wheels are available as part of the Mulliner Driving Specification.

Continental GT Speed and Continental GT Speed Convertible is available to order in all markets, except mainland China, and is currently not available in EU27, UK, Switzerland, Israel, Ukraine, Norway, Turkey and Vietnam.





20" 10-SPOKE ALLOY  
WHEEL – PAINTED



21" 5 TRI-SPOKE ALLOY  
WHEEL – PAINTED\*  
(V8 standard)



21" 5 TRI-SPOKE ALLOY  
WHEEL – GREY PAINTED  
AND BRIGHT MACHINED



21" 5 TRI-SPOKE ALLOY  
WHEEL – BLACK AND  
BRIGHT MACHINED\*\*



21" 10-SPOKE ALLOY  
WHEEL – PAINTED



21" 10-SPOKE ALLOY  
WHEEL – GREY PAINTED  
AND BRIGHT MACHINED



21" 10-SPOKE ALLOY  
WHEEL – POLISHED



22" 5 OPEN-SPOKE ALLOY  
WHEEL – PAINTED†



22" 5 OPEN-SPOKE ALLOY  
WHEEL – BLACK WITH  
HAND-POLISHED EDGES†



22" 5 OPEN-SPOKE ALLOY  
WHEEL – POLISHED†



22" 5 OPEN-SPOKE ALLOY  
WHEEL – BLACK††



22" 10-SPOKE MULLINER  
WHEEL – PAINTED AND  
POLISHED WITH SELF  
LEVELLING WHEEL BADGE‡



22" SPEED WHEEL  
– SILVER PAINTED‡‡  
(Speed standard)



22" SPEED WHEEL  
– BLACK PAINTED‡‡



22" SPEED WHEEL  
– DARK TINT‡‡



## Veneers.

Bentley is unique in its enthusiasm for natural materials and exquisite, handcrafted finishes.

From the subtle blondes of Tamo Ash\* to the smoke-like grain of Dark Fiddleback Eucalyptus\*, Bentley works with a wide variety of tree species, with all wood sourced ethically and sustainably from forests around the world. You can choose from open pore, high gloss and dual veneers, confident in the knowledge that every piece of wood is painstakingly sanded and lacquered in a process that takes up to ten days to reach the Bentley standard of finish.

The Continental GT can be commissioned with one of seven stunning dual veneers. The chosen veneer is applied to the upper fascia, contrasting with a stunning Grand Black veneer on the lower fascia and centre console.

The two veneers are separated by an elegant 3 mm polished chrome pinstripe running the length of the fascia and out onto the doors, in an uninterrupted line. The pinstripe can also be selected as an option with a single veneer.





## SINGLE VENEERS



Tamo Ash by Mulliner



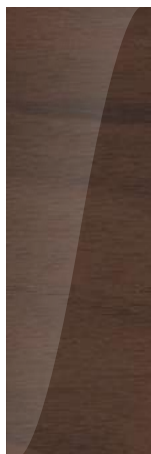
Koa



Burr Walnut by Mulliner



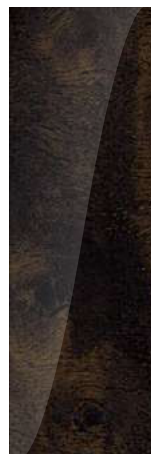
Dark Fiddleback Eucalyptus†



Crown Cut Walnut\*\*†



Liquid Amber



Dark Stained Burr Walnut‡



Piano Black\*\*\*



Open Pore Dark Burr Walnut‡



Open Pore Crown Cut Walnut‡



Open Pore Koa‡

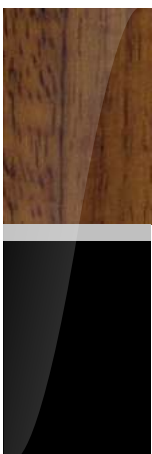


Grand Black with metal inlay‡

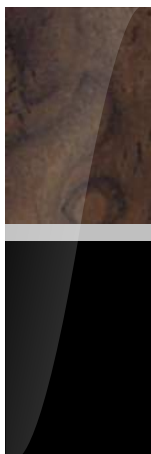
## DUAL VENEERS BY MULLINER



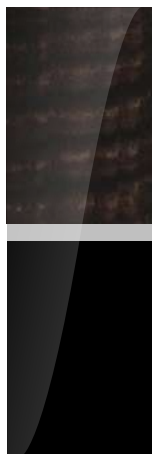
Tamo Ash & Grand Black



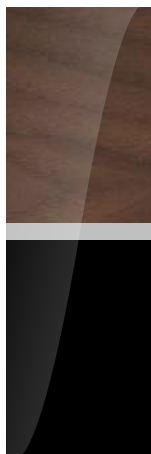
Koa & Grand Black



Burr Walnut & Grand Black



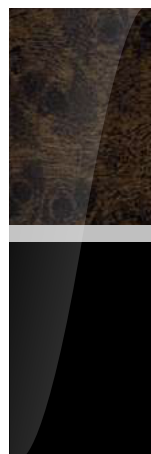
Dark Fiddleback Eucalyptus & Grand Black



Crown Cut Walnut & Grand Black



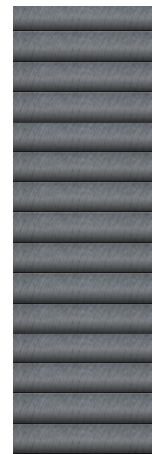
Liquid Amber & Grand Black



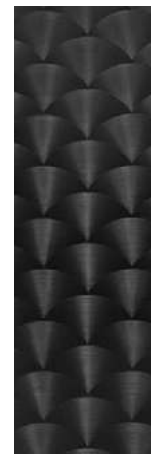
Dark Stained Burr Walnut & Grand Black



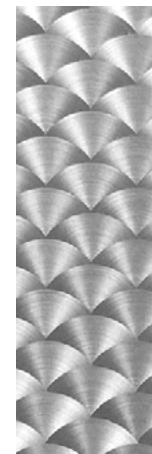
Carbon Fibre\*\*



Côte de Genève††



Dark Tint Engine Turned Aluminium‡



Engine Turned Aluminium



Diamond Milled‡‡

## TECHNICAL FINISHES

\*Standard veneer on the Continental GT V8. All other veneers are cost options.

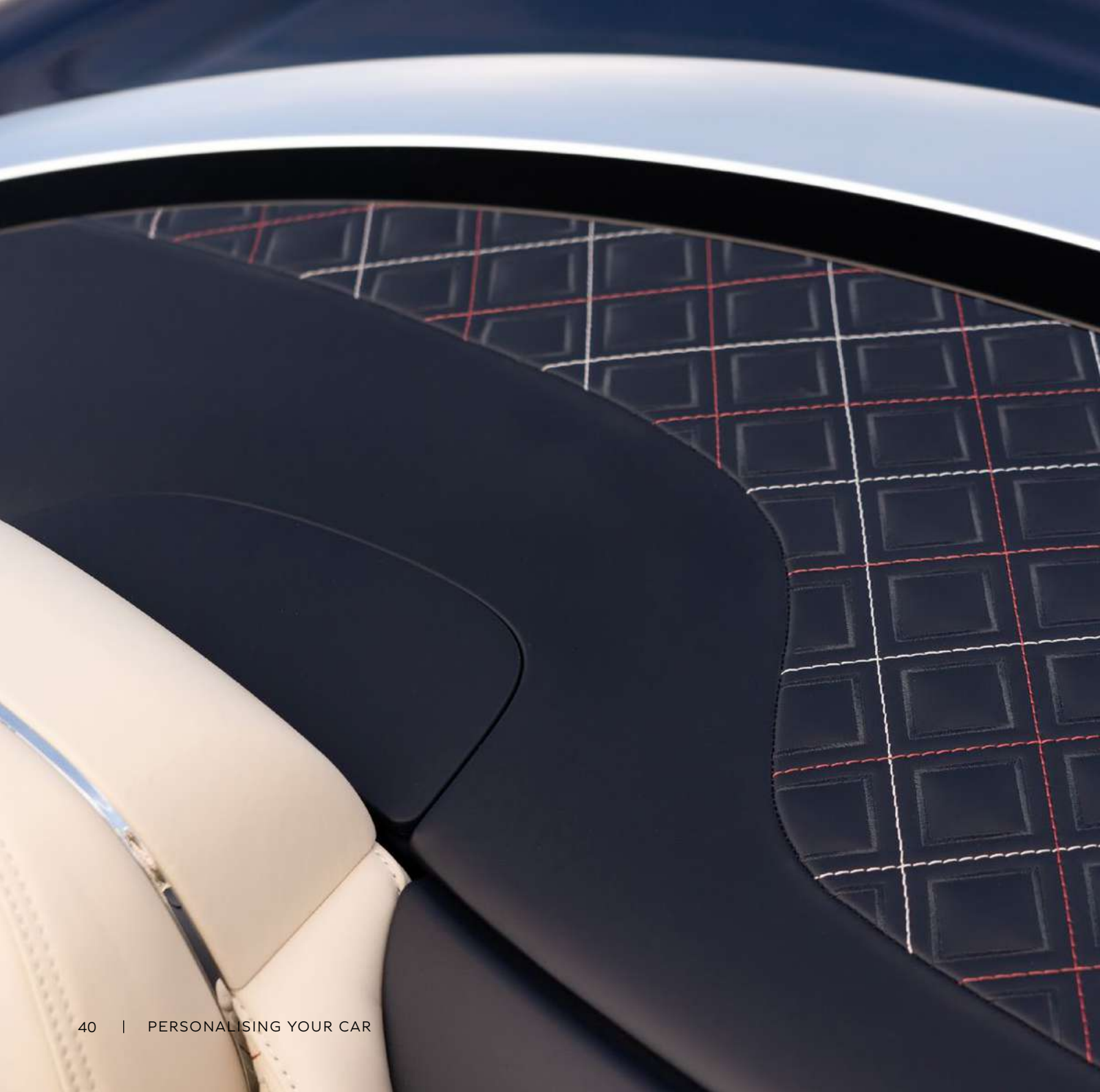
\*\*Applied to fascia and door waistrails and Piano Black on the centre console.

\*\*\*Standard veneer on the Continental GT Speed. †No cost option on Continental GT Speed. ††Centre console only as a cost option.

‡Only available on Continental GT Speed (centre console only). ‡‡Only available on Continental GT Mulliner.

Please note, the colours reproduced are for representation purposes only and therefore vary slightly from the actual vehicle.





## Hides.

Every inch of the interior of the Continental GT is upholstered by hand. Crafting the hides is a time-honoured process that involves skills that take years to learn.

From the seats to the fascia and the steering wheel, every part of this extraordinary car requires a different approach. Which is why sections of the hide with high natural elasticity are used for curved surfaces like the seats, rather than for piping or flatter areas such as door inserts. The steering wheel, meanwhile, is covered in a different type of leather, more resistant to the natural chemicals it absorbs from the driver's skin.

A wide range of leathers are available for the Continental GT – every colour chosen by the Bentley design team to complement the interior perfectly. For the ultimate in luxurious comfort, semi-aniline hides\* can be chosen, giving an even softer feel than that of standard leather.

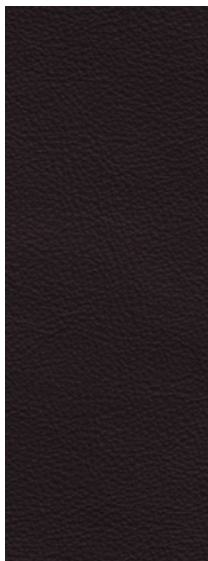
Continental GT Mulliner Convertible  
WLTP drive cycle: fuel consumption,  
mpg (l/100km) – Combined 22.6 (12.5).  
Combined CO<sub>2</sub> – 284 g/km.

\*Not available on Continental GT Convertible.

Image shown of the quilted contrast and accent stitching to the tonneau cover is available on Continental GT Mulliner Convertible only.



Burnt Oak



Damson



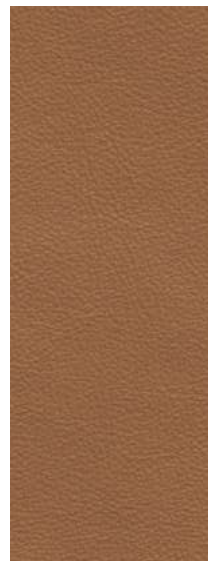
Cricket Ball\*



Hotspur



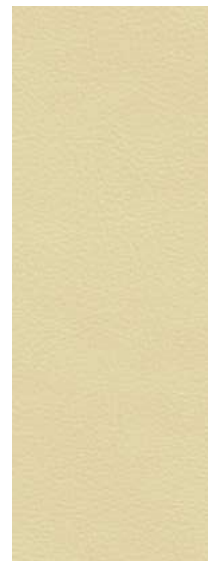
Saddle



Newmarket Tan\*



Camel



Magnolia



Linen



Portland



Porpoise\*



Brunel



Beluga\*



Cumbrian Green



Imperial Blue\*

All hide colours are available as standard on the Continental GT Speed. \*Available as standard on the Continental GT V8, other colours are available as a cost option. Please note, the colours reproduced are for representation purposes only and therefore vary slightly from the actual vehicle. Additional accent colours are available as part of the GT Mulliner eight colour splits.





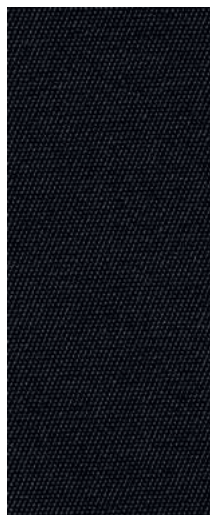
## Roof options.

The Continental GT Convertible can be commissioned with seven different roof colours, and eight interior roof linings. This is yet another stunning demonstration of Bentley's commitment to exquisite craftsmanship, right down to the very last detail.

## ROOF EXTERIOR



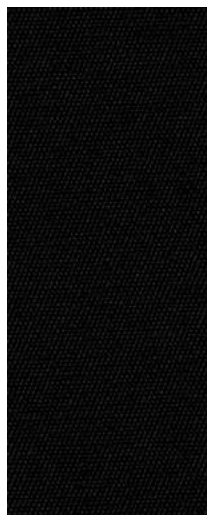
Black



Blue



Grey



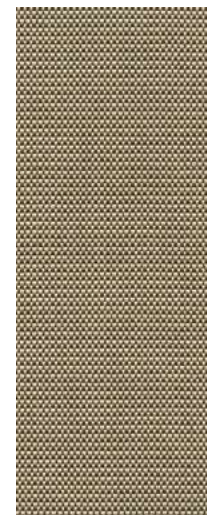
Dark Brown\*



Dark Grey Metallic\*



Claret\*



Tweed\*

## ROOF INTERIOR



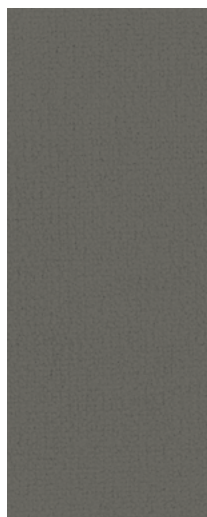
Magnolia\*\*



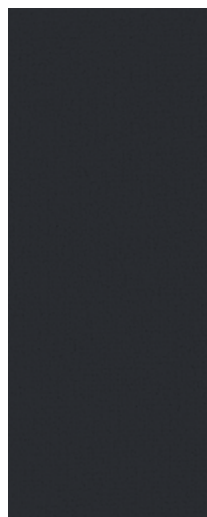
Camel\*\*



Light Grey\*\*



Grey



New Blue



Saddle



Beluga



Red



## Optional packages.

To make it even easier to specify your perfect Continental GT, Bentley's engineers and designers have created groups of optional features, from technology packages that make driving easier to collections of exquisitely crafted styling enhancements.

### Mulliner Driving Specification

Luxurious interior and exterior details with a more sporting style.

- 22" 5 open-spoke alloy wheels (available painted, polished, full black with hand-polished edges)
- 'Diamond-in-diamond' quilting on the seats, door casings and rear quarter panels
- Sports pedals
- Jewel fuel filler and oil cap
- Embroidered Bentley emblems
- Piano Black or Dark Stained Burr Walnut (no cost option)
- Heated, duo-tone, 3-spoke, indented hide-trimmed steering wheel\*

### Colour Specification

Opens up a range of additional interior options for the Continental GT V8 and V8 Convertible.

- 10 additional hide choices
- Four additional colourways
- Three additional interior roof colours for the V8 Convertible

### City Specification

Digital assistance features for easier urban driving.

- Top View Camera
- Traffic Sign Recognition\*\*
- City Assist
- Pedestrian Warning
- Reversing Traffic Warning
- Automatic dimming door mirrors
- Hands-free boot opening

### Touring Specification

Digital assistance features for effortless cruising.

- Active Lane Assist
- Automatic Cruise Control with Traffic Jam Assist\*\*
- Bentley Safeguard Plus
- Night Vision
- Head-Up Display\*\*

### Blackline Specification

Replaces the exterior brightware with a gloss black trim.

- Black door handles
- Black gloss radiator matrix grille with black surround
- Black wing vents and lower side strike
- Black rear bumper strike and number plate embellisher
- Black headlamp and tail lamp embellisher
- Black side window surrounds
- Black tailpipes
- Opens up additional wheel choices unique to Blackline Specification

### Front Seat Comfort Specification

The ultimate in Bentley comfort for the driver and front seat passenger.

- Ventilated seats
- Multi-mode massage seats
- Adjustable cushion length
- Adjustable side bolsters
- Electric headrests
- Hide-trimmed seat belt buckles
- Heated armrests
- Neck warmer (Continental GT Convertible 2020 model year)

### Diamond Knurling Specification

An intricate metal treatment applied to additional elements of the fascia and console.

- Knurled bulls-eye air vents
- Knurled dashboard clock bezel
- Knurled organ stops

### Bentley Rotating Display

A stunning optional feature that combines classic craftsmanship with the latest digital technology.

- Diamond knurling to all three gauges:
- Compass
- Chronograph
- Outside air temperature

For more information about the Bentley Rotating Display, please see page 23.

\*Steering wheel option to be selected separately.

\*\*This feature is not available in all markets.

Please contact your local retailer for availability.



## Your choice.

Commissioning a Continental GT involves an exciting journey through the options available. Bentley retailers can offer advice and guidance across a wide range of choices including your exterior paint, veneer, hides and stitching.

If you already know what you're looking for, or you simply want to experiment in your own time, the Bentley Configurator enables you to experiment with the different options. Once you've created your car, your configuration can be saved and emailed to your retailer.

[www.BentleyConfigurator.com](http://www.BentleyConfigurator.com)

Continental GT Speed and Continental GT Speed Convertible is available to order in all markets, except mainland China, and is currently not available in EU27, UK, Switzerland, Israel, Ukraine, Norway, Turkey and Vietnam.



## Accessories.

Our designers and engineers are involved in setting the specifications for each of the accessories for the Continental GT range.

The Styling Specification\*, specifically designed for the Continental GT and GT Convertible, includes a front splitter, side sills, rear diffuser and lip spoiler. The perfect way to personalise your car's exterior, it adds to the dynamic appearance of the Continental GT.

Our range of accessories expands further, keeping your car in optimum condition wherever your journey takes you. Heavy Duty Floor and Boot Mats with raised edges provide extra protection and grip, especially in wet and cold weather conditions. Whilst these elements take care of the interior, Bentley Winter Tyres are engineered to maintain driving performance at temperatures below 7°C, maximising safety during the colder season.

Every eventuality is considered with accessories such as the Boot Net, providing secure storage for fragile items in your boot while in transit.

A temporary spare wheel supplied in a durable wheel bag is also available for added peace of mind. And for those who want a truly bespoke element for the smallest, and most important travellers, the Bentley Child Seat provides exceptional comfort and can even be embroidered with your child's name.

Additional accessories designed to care for your car while it's not in use include protective, personalised car covers for both indoor and outdoor use which are custom-stitched to fit the contours of your Continental GT and protect its paintwork. In addition, Tyre Cradles can be used to protect your tyres from flat spotting if your car is ever in long term storage.

For details of our full accessories range, please contact your local Bentley retailer.

Continental GT Speed and Continental GT Speed Convertible is available to order in all markets, except mainland China, and is currently not available in EU27, UK, Switzerland, Israel, Ukraine, Norway, Turkey and Vietnam.

Carbon Fibre Styling Specification



\*Styling Specification is not available on the Continental GT Mulliner.



## Acquiring your car on finance.

Bentley finance agreements are tailored to ensure you make the most of your investment.

While other financiers look only at the circumstances of the customer, Bentley Financial Services creates bespoke packages, based not just on your needs and income, but also on the car you have in mind.

To discover more, please visit your local Bentley retailer or visit [BentleyMotors.com](http://BentleyMotors.com)

## Something to appreciate.

As is the case with every Bentley, there is only one way to truly appreciate this car – to sit in the driving seat, to take the wheel in your hands and feel the breathtaking surge of acceleration as you put your foot down.

To take the next step on the journey of acquiring a Continental GT, we recommend a conversation with a Bentley retailer. You can find your nearest showroom at [BentleyMotors.com](http://BentleyMotors.com)



# WORLD OF BENTLEY





## The Bentley Collection.

The Bentley Collection comprises a selection of lifestyle products inspired by the design, craftsmanship and performance of Bentley's cars. With many items lovingly crafted by highly skilled artisans, the Bentley Collection takes our exciting heritage and vision for the future, and seamlessly weaves it into extraordinary statement pieces.

From stylish accessories to exquisite finishing touches for the office or home, every item captures Bentley's inherent qualities of craftsmanship, tradition, exclusivity and style.

To view the complete Bentley Collection range, please contact your local Bentley retailer or visit the online store at [BentleyCollection.com](http://BentleyCollection.com)





## The Bentley Experience.

With the opportunity to visit Bentley's factory, the Bentley Experience offers a unique insight into the design and engineering required to create a Bentley.

See the full model range and explore a dedicated personalisation area, bespoke Mulliner room and Bentley boutique, for a window into the world of the Bentley brand.

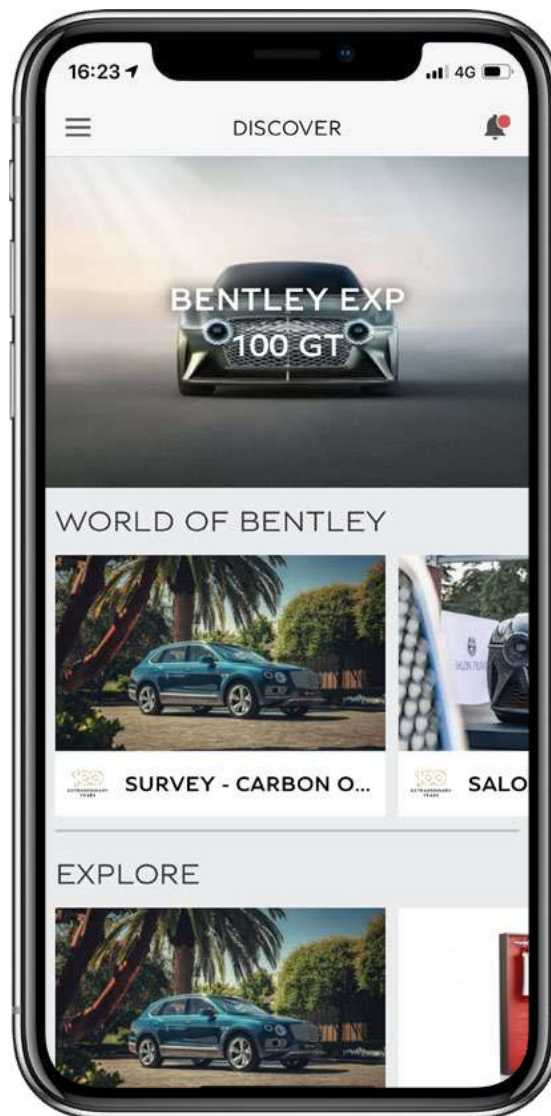
To register your interest and find out more, please contact your local Bentley retailer.

## Bentley events.

Bentley runs a number of events each year for Bentley drivers and enthusiasts.

From the Extraordinary World programme, which offers the opportunity to explore some of the most remote and beautiful landscapes in the world from the luxury of a Bentayga, to exclusive drives through Europe experiencing the finest cuisine, luxury and culture on offer, there is a Bentley event to satisfy everyone from the most ardent thrill seeker to the cultured adventurer.

To discover more, please visit your local Bentley retailer or visit [BentleyMotors.com](https://www.bentleymotors.com)



## The Bentley Network.

Imagine an app that puts the world of Bentley in your hands.

The Bentley Network app provides access to essential owner services, an exclusive line of communication with Bentley and membership of a global community of like-minded owners – and it puts the future of Bentley, quite literally, at your fingertips.

Available exclusively to Bentley owners, the app is a fast track to Bentley's world of unique events – with priority invitations to everything from thrilling driving experiences to intimate dinners, to some of the most exhilarating races in the global motorsport calendar.

Through the Bentley Network app, you will be the first to hear about the latest Bentley news, product announcements and exclusive content. Plus you can share your ideas, inspiration and experiences with an exclusive online community of Bentley owners just like yourself.

To download the Bentley Network app [click here](#).

# SPECIFICATIONS AND OPTIONS



Continental GT V8 WLTP drive cycle: fuel consumption,  
mpg (l/100km) – Combined 23.3 (12.1). Combined CO<sub>2</sub> – 275 g/km.



# Continental GT V8.

## STANDARD SPECIFICATION

### BRAKES

- Front vented 420 x 40 mm disc brakes with Bentley branded black 10 piston brake callipers
- Rear vented 380 x 30 mm disc brakes with Bentley branded black 4 piston brake callipers
- Brake pad wear indicator
- Torque vectoring by brake

### WHEELS

- 21" 5 tri-spoke alloy wheel – painted
- Electronic Tyre Pressure Monitoring System (TPMS)
- 21" V8 summer tyre

### STEERING

- Speed-sensitive electronic power steering

### SUSPENSION

- Three chamber air suspension with Continuous Damping Control (CDC)
- Electronic Stability Programme (ESP) with Traction Control (TCS)/Anti-lock Braking System (ABS)/Electronic Brake Force Distribution (EBD)/Hydraulic Brake Assist (HBA)/Drag Torque Control (MSR)
- Dynamic ride-height control (auto-adjusts at speed) and ground clearance function
- Drive Dynamics Mode

### EXTERIOR

- Standard V8 paint range (7)
- Bright wing vent with black ribbed matrix
- Bright radiator matrix
- Lower front bumper grilles in black
- Polished brightware to side windows
- Power latches to the doors and boot
- Electrically adjustable door mirrors with heating, power fold, memory and dip on reverse functions
- Black/chrome bonnet and boot Bentley wing badges
- Branded 'BENTLEY' sills
- 'BENTLEY' lettering on the boot
- V8 front fender badge

- Full LED matrix headlamps\* with high-beam assist
- Full LED supplementary lamps and tail lamps
- Front and rear Park Distance Control
- Acoustic, heat-insulating, front screen
- Acoustic side glass
- Heated rear screen
- Quad oval exhaust finishers
- Rain-sensing windscreen wipers
- Battery charger socket

### INTERIOR

- Four occupant seating positions
- Seats with straight-fluted style hide
- Alcantara V8 pillars and headliner – 5 colours
- Nappa leather V8 interior on seats and lower cabin – 5 available colours
- One V8 monotone colourway
- Treadplates inner with "Handbuilt in Crewe, England" insert
- Electric 12-way front seats, heated with two memory functions
- Single front armrest (with fore/aft slide) – with stowage inc. 12 volts socket and two USB charging points
- Two rear seats with centre stowage inc. 12 volts socket and two USB charging points
- Power sockets (two in cabin, one in boot)
- Crown Cut Walnut veneer
- Metal bulls-eye vents with organ stops
- Bentley analogue clock with plain bezel
- Black seat belt buckles
- Bright boot finisher
- Deep pile carpets – matched to main or secondary hide
- Standard carpet overmats to the front
- Boot carpet in Beluga
- Auto-dimming rear-view mirror
- Two cup holders to rear console
- Electric tilt-and-reach adjustment steering column with memory and easy-entry functions
- Multi-zone automatic climate control
- Two cup holders to the centre console
- Lockable, cooled glove box
- Stowage to front doors, centre console and under centre armrest
- Sun visors with illuminated vanity mirrors

- Footwell illumination and ambient lighting
- Ski hatch\*
- Boot lid down lighters
- Standard foot pedals
- Leather-trimmed gear lever
- Steering wheel mounted gearshift paddles
- Single tone, three-spoke, hide trimmed steering wheel

### TECHNOLOGY

- Infotainment system with 12.3" high-resolution capacitive touchscreen display. Proximity sensors and hard key controls. Digital radio, HDD-Navigation, advance music interface (AMI), single DVD/CD slot, two SD card slots, Bluetooth (A2DP) and Wi-Fi (uPnP) streaming
- Navigation – featuring text-to-speak, voice destination entry and 3D building display
- Apple CarPlay®\*
- 60GB solid-state drive (10GB available user space)
- Hidden antennae
- 4G LTE telephone module\*
- POI (search)\*
- Online real time traffic information\*
- Bentley audio system, 10 speakers, 650 watts
- Bluetooth and Wi-Fi audio streaming
- Pre-sense braking system (Bentley Safeguard)\*
- Adaptive brake lights\*
- Keyless entry and ignition
- Exit Warning
- Blind Spot Warning
- Park Assist
- Engine stop/start button
- Alarm and immobiliser
- Cruise control
- Reversing camera with graphic screen representation
- Driver and passenger airbags
- Side airbags
- Collision Prevention Assist\*
- Pre-crash, rear\*
- Multi-collision brake\*

### SPECIFICATIONS

- City Specification

See the full details of these specifications on page 44.

# Continental GT V8.

## OPTIONAL SPECIFICATION

### EXTERIOR

- Additional exterior paint colours
- Bentley branded brake callipers in Red
- Bright chromed lower bumper matrix style grille
- Fixed glass roof with Alcantara blind\*

### INTERIOR

- Choice of seven additional V8 veneers: Burr Walnut, Dark Stained Burr Walnut, Dark Fiddleback Eucalyptus, Koa, Liquid Amber, Piano Black, Tamo Ash
- Unique centre console finish in 'Côtes de Genève'
- Choice of dual veneers applied to the upper fascia, with Grand Black veneer on the lower fascia and centre console
- Carbon Fibre to fascia and door waistrails with Piano Black to centre console
- Engine Turned Aluminium to fascia and door waistrails
- Deep pile overmats to front
- Contrast binding to deep pile carpet overmats (front)
- Embroidered Bentley emblems to headrests
- Indented hide headliner
- Sports pedals
- Semi-aniline leather to seats and door inserts†
- Contrast stitching
- Contrast stitching and piping
- Hand cross stitching by Mulliner
- Chrome pinstripe to fascia and door decoration panels
- Heated, duo-tone, 3-spoke, hide-trimmed steering wheel
- Heated, duo-tone, 3-spoke indented hide-trimmed steering wheel
- Heated, single tone, 3-spoke, hide-trimmed steering wheel
- Heated, single tone, 3-spoke indented hide-trimmed steering wheel
- 10 V8 hide choices††
- 4 additional V8 duo-tone colourways††

### CONVENIENCE

- Heated windscreen†\*
- Battery charger\*
- Air ioniser
- Illuminated Bentley sill and treadplate
- Parking heater†
- Remote controlled garage door opener\*
- Valet key
- First aid kit and warning triangle
- Windstop (NCO) (Convertible only)
- Warning triangle\*
- Tool kit and jack\*
- Keybox

### TECHNOLOGY

- Adaptive Cruise Control\*
- Bentley Rotating Display
- Naim for Bentley audio system
- Bang & Olufsen for Bentley audio system
- Inductive phone charger\*
- Welcome lighting
- LED Welcome lights
- Bentley GPS tracking system\*
- Digital TV tuner\*
- Bentley Dynamic Ride system

### WHEELS

- 21" 5 tri-spoke alloy wheel – grey painted and bright machined
- 21" 5 tri-spoke alloy wheel - black painted and bright machined\*\*
- 21" 10-spoke alloy wheel – painted
- 21" 10-spoke alloy wheel – grey painted and bright machined
- 21" 10-spoke alloy wheel – polished
- 22" 5 open-spoke alloy wheel – painted
- 22" 5 open-spoke alloy wheel – black with polished edges
- 22" 5 open-spoke alloy wheel – polished
- 22" 5 open-spoke alloy wheel – black^
- Winter wheels and tyres
- Summer tyres\*
- All-season tyres\*
- Temporary use spare wheel for home\*

### SPECIFICATIONS

- Mulliner Driving Specification
- Touring Specification\*
- Front Seat Comfort Specification
- Mood Lighting Specification
- Diamond Knurling Specification
- Smokers Specification
- Blackline Specification
- Colour Specification

See the full details of these specifications on page 44.

\*This feature is not available in all markets.

Please contact your local retailer for availability.

\*\*Only available if the Blackline Specification is selected.

†Not available on the Continental GT V8 Convertible.

††Part of the Colour Specification.

^Only available if the Blackline Specification and Mulliner Driving Specification are selected.

Please see your Bentley retailer for the latest information.



# Continental GT V8 Convertible.

## **STANDARD SPECIFICATION**

(in addition to the Continental GT coupé specification)

### **EXTERIOR**

- Automatically folding four layer insulated fabric roof in three colours: Black, Blue, Grey

### **INTERIOR**

- Five interior V8 roof colours: Beluga, New Blue, Grey, Red, Saddle
- Two rear seats with centre stowage including 12 volt socket and one USB charging point
- Ski hatch not available

## **OPTIONAL SPECIFICATION**

(in addition to the Continental GT coupé specification)

### **EXTERIOR**

- Choice of four additional exterior roof colours: Dark Brown, Claret, Dark Grey Metallic and Tweed

### **INTERIOR**

- Additional 3 V8 interior roof colours: Camel, Light Grey and Magnolia as part of the Colour Specification
- Front Seat Comfort Specification has the additional feature for Convertible:
  - Neck warmer
- Wind deflector

# Continental GT Speed.

## STANDARD SPECIFICATION

### BRAKES

- Front vented 420 x 40 mm disc brakes with Bentley branded black 10 piston brake callipers
- Rear vented 380 x 30 mm disc brakes with Bentley branded black 4 piston brake callipers
- Brake pad wear indicator
- Torque vectoring by electronic differential (eLSD)

### WHEELS

- 22" Speed wheel – silver painted
- Electronic Tyre Pressure Monitoring System (TPMS)
- 22" summer tyre with Pirelli Noise Cancellation System

### STEERING

- Electronic all wheel steering

### SUSPENSION

- Three chamber air suspension with Continuous Damping Control (CDC)
- Electronic Stability Programme (ESP) with Traction Control (TCS)/Anti-lock Braking System (ABS)/Electronic Brake Force Distribution (EBD)/Hydraulic Brake Assist (HBA)/Drag Torque Control (MSR)
- Dynamic ride-height control (auto-adjusts at speed) and ground clearance function
- Bentley Dynamic Ride System
- Drive Dynamics Mode

### EXTERIOR

- Standard paint range (16)
- Bright wing vent with '12' in the black ribbed matrix
- Dark tint granite painted radiator matrix
- Lower front bumper grilles in dark tint (granite painted)
- Speed fender badge
- Polished brightware to side windows
- Power latches to the doors and boot
- Electrically adjustable door mirrors with heating, power fold, memory and dip on reverse functions
- Black/chrome bonnet and boot Bentley wing badges
- Branded 'BENTLEY' illuminated sills
- Speed sport sills
- 'BENTLEY' lettering on the boot

- Jewel fuel filler and oil cap
- Full LED matrix headlamps\* with high-beam assist
- Full LED supplementary lamps and tail lamps
- Front and rear Park Distance Control
- Acoustic, heat-insulating, front screen
- Acoustic side glass
- Heated rear screen
- Two oval exhaust finishers
- Rain-sensing windscreen wipers
- Battery charger socket

### INTERIOR

- Four occupant seating positions
- "Diamond in Diamond" quilting to seats, door casing and rear quarter panels
- Alcantara pillars and headliner – 15 colours
- Nappa leather interior on seats and lower cabin – 15 available colours
- Unique Speed colourway
- Treadplates inner with "Speed" insert
- Electric 12-way front seats, heated with two memory functions
- Speed embroidered headrests
- Single front armrest (with fore/aft slide) – with stowage inc. 12 volts socket and two USB charging points
- Two rear seats with centre stowage inc. 12 volts socket and two USB charging points
- Power sockets (two in cabin, one in boot)
- Piano Black veneer
- Speed facia badge
- Metal bulls-eye vents with organ stops
- Bentley analogue clock with plain bezel
- Black seat belt buckles
- Bright boot finisher
- Deep pile carpets – matched to main or secondary hide
- Standard carpet overmats to the front
- Boot carpet in Beluga
- Auto-dimming rear-view mirror
- Two cup holders to rear console
- Electric tilt-and-reach adjustment steering column with memory and easy-entry functions
- Multi-zone automatic climate control
- Two cup holders to the centre console
- Lockable, cooled glove box
- Stowage to front doors, centre console and under centre armrest
- Sun visors with illuminated vanity mirrors

- Footwell illumination and ambient lighting
- Ski hatch
- Boot lid down lighters
- Sports foot pedals
- Leather-trimmed gear lever
- Steering wheel mounted gearshift paddles
- Single tone, three-spoke, hide and Alcantara trimmed heated steering wheel

### TECHNOLOGY

- Infotainment system with 12.3" high-resolution capacitive touchscreen display. Proximity sensors and hard key controls. Digital radio, HDD-Navigation, advance music interface (AMI), single DVD/CD slot, two SD card slots, Bluetooth (A2DP) and Wi-Fi (uPnP) streaming
- Navigation – featuring text-to-speak, voice destination entry and 3D building display
- Apple CarPlay®\*
- 60 GB solid-state drive (10 GB available user space)
- Hidden antennae
- 4G LTE telephone module\*
- POI (search)\*
- Online real time traffic information\*
- Bentley audio system, 10 speakers, 650 watts
- Bluetooth and Wi-Fi audio streaming
- Pre-sense braking system (Bentley Safeguard)\*
- Adaptive brake lights\*
- Keyless entry and ignition
- Exit Warning
- Blind Spot Warning
- Park Assist
- Engine stop/start button
- Alarm and immobiliser
- Cruise control
- Reversing camera with graphic screen representation
- Driver and passenger airbags
- Side airbags
- Collision Prevention Assist\*
- Pre-crash, rear\*
- Multi-collision brake\*

### SPECIFICATIONS

- Mulliner Driving Specification
- City Specification

See the full details of these specifications on page 44.

\*Market specific. Please see your Bentley retailer for the latest information.



# Continental GT Speed.

## OPTIONAL SPECIFICATION

### EXTERIOR

- Additional exterior paint colours
- Bentley branded brake callipers in Red
- Bumper matrix style grille
- Bright radiator matrix
- Fixed glass roof with Alcantara blind
- Carbon ceramic front and rear brakes with Bentley branded calipers – Red
- Carbon ceramic front and rear brakes with Bentley branded calipers – Black

### INTERIOR

- Choice of additional veneers: Burr Walnut, Crown Cut Walnut (NCO), Dark Stained Burr Walnut (NCO), Dark Fiddleback Eucalyptus (NCO), Koa, Liquid Amber, Piano Black, Tamo Ash
- Choice of additional open pore veneers: Crown Cut Walnut, Dark Stained Burr Walnut, Koa
- Unique centre console finish in 'Cotes de Geneve'
- Choice of dual veneers applied to the upper fascia, with Grand Black veneer on the lower fascia and centre console
- Carbon Fibre to fascia and door waistrails with Piano Black to centre console
- Engine Turned Aluminium to fascia and door waistrails
- Dark Tint Engine Turned Aluminium to centre console
- Deep pile overmats to front
- Contrast binding to deep pile carpet overmats (front)
- Embroidered Bentley emblems to headrests (NCO)
- Leather pillars and indented hide headliner
- Semi-aniline leather to seats and door inserts†
- Contrast stitching to interior and steering wheel
- One monotone and four duo-tone colourways
- Chrome pinstripe to fascia and door decoration panels
- Heated, duo-tone, 3-spoke, hide-trimmed steering wheel
- Heated, duo-tone, 3-spoke indented hide-trimmed steering wheel

- Heated, duo-tone, 3-spoke indented hide and Alcantara-trimmed steering wheel
- Heated, single tone, 3-spoke, hide-trimmed steering wheel
- Heated, single tone, 3-spoke indented hide-trimmed steering wheel

### CONVENIENCE

- Heated windscreen†\*
- Battery charger\*
- Air ioniser
- Illuminated Bentley sill and treadplate
- Parking heater†
- Remote controlled garage door opener\*
- Valet key
- First aid kit and warning triangle
- Windstop (NCO) (Convertible only)
- Warning triangle\*
- Tool kit and jack\*
- Keybox

### TECHNOLOGY

- Adaptive Cruise Control\*
- Bentley Rotating Display
- Naim for Bentley audio system
- Bang & Olufsen for Bentley audio system
- Inductive phone charger\*
- Welcome lighting
- LED Welcome lights
- Bentley GPS tracking system\*
- Digital TV tuner\*

### WHEELS

- 22" Speed wheel – black painted
- 22" Speed wheel – dark tint
- 22" 5 open-spoke alloy wheel – painted
- 22" 5 open-spoke alloy wheel – black with polished edges
- 22" 5 open-spoke alloy wheel – polished
- 22" 5 open-spoke alloy wheel – black^
- Winter wheels and tyres
- Summer tyres\*
- All season tyres\*
- Temporary use spare wheel for home\*

## SPECIFICATIONS

- Touring Specification\*
- Front Seat Comfort Specification
- Mood Lighting Specification
- Diamond Knurling Specification
- Smokers Specification
- Blackline Specification

See the full details of these specifications on page 44.

\*Market specific.

\*\*Only available if the Blackline Specification is selected.

†Not available on the Continental GT Speed Convertible.

^Only available if the Blackline Specification and Mulliner Driving Specification are selected.  
Please see your Bentley retailer for the latest information.

# Continental GT Speed Convertible.

## **STANDARD SPECIFICATION**

(in addition to the Continental GT Speed coupé specification)

### **EXTERIOR**

- Automatically folding four layer insulated fabric roof in three colours: Black, Blue, Grey

### **INTERIOR**

- Eight interior roof colours: Beluga, New Blue, Camel, Grey, Light Grey, Magnolia, Red, Saddle
- Two rear seats with centre stowage including 12 volt socket and one USB charging point
- Ski hatch not available

## **OPTIONAL SPECIFICATION**

(in addition to the Continental GT Speed coupé specification)

### **EXTERIOR**

- Choice of four additional exterior roof colours: Dark Brown, Claret, Dark Grey Metallic and Tweed

### **INTERIOR**

- Front Seat Comfort Specification has the additional feature for Convertible:
  - Neck warmer
- Wind deflector



# Continental GT Mulliner (V8).

## STANDARD SPECIFICATION

### BRAKES

- Front vented 420 x 40 mm disc brakes with Bentley branded black 10 piston brake callipers
- Rear vented 380 x 30 mm disc brakes with Bentley branded black 4 piston brake callipers
- Brake pad wear indicator
- Torque vectoring by brake

### WHEELS

- 22" Mulliner alloy wheel – painted and polished with self-levelling wheel badge
- Electronic Tyre Pressure Monitoring System (TPMS)
- 22" V8 summer tyre

### STEERING

- Speed-sensitive electronic power steering

### SUSPENSION

- Three chamber air suspension with Continuous Damping Control (CDC)
- Electronic Stability Programme (ESP) with Traction Control (TCS)/Anti-lock Braking System (ABS)/Electronic Brake Force Distribution (EBD)/Hydraulic Brake Assist (HBA)/Drag Torque Control (MSR)
- Dynamic ride-height control (auto-adjusts at speed) and ground clearance function
- Drive Dynamics Mode
- Bentley Dynamic Ride System

### EXTERIOR

- Standard paint range (16)
- Bright wing vent with diamond matrix and Mulliner branding
- Unique Mulliner radiator grille with double diamond design
- Lower front bumper grilles in chrome
- Polished brightware to side windows
- Power latches to the doors and boot
- Painted door mirrors in Satin Silver
- Electrically adjustable door mirrors with heating, power fold, memory and dip on reverse functions
- Black/chrome bonnet and boot Bentley wing badges
- Branded 'MULLINER' illuminated door sills
- 'BENTLEY' lettering on the boot

- Full LED matrix headlamps\* with high-beam assist
- Full LED supplementary lamps and tail lamps
- Front and rear Park Distance Control
- Acoustic, heat-insulating, front screen
- Acoustic side glass
- Heated rear screen
- Quad oval exhaust finishers
- Rain-sensing windscreen wipers
- Battery charger socket

### INTERIOR

- Four occupant seating positions
- Seats with quilted diamond-in-diamond design
- Eight duo-tone colour combinations
- Treadplates inner with "Handbuilt in Crewe, England" insert
- Electric 20-way front seats, heated with two memory functions
- Single front armrest (with fore/aft slide) – with stowage inc. 12 volts socket and two USB charging points
- Two rear seats with centre stowage inc. 12 volts socket and two USB charging points
- Power sockets (two in cabin, one in boot)
- Grand Black veneer with chrome overlay
- Diamond Milled technical finish to centre console
- Metal bulls-eye vents with organ stops
- Breitling clock
- Hide covered seat belt buckles
- Interior mood lighting
- Personalised key presentation box
- Bright boot finisher
- Deep pile carpets with micro piping and Bentley fasteners
- Boot carpet in Beluga
- Auto-dimming rear-view mirror
- Two cup holders to rear console
- Electric tilt-and-reach adjustment steering column with memory and easy-entry functions
- Multi-zone automatic climate control
- Two cup holders to the centre console
- Lockable, cooled glove box
- Stowage to front doors, centre console and under centre armrest
- Sun visors with illuminated vanity mirrors
- Footwell illumination and ambient lighting
- Ski hatch\*
- Boot lid down lighters
- Sports foot pedals

- Leather-trimmed gear lever
- Steering wheel mounted gearshift paddles
- Heated, duo-tone, 3-spoke, indented hide-trimmed steering wheel

### TECHNOLOGY

- Infotainment system with 12.3" high-resolution capacitive touchscreen display. Proximity sensors and hard key controls. Digital radio, HDD-Navigation, advance music interface (AMI), single DVD/CD slot, two SD card slots, Bluetooth (A2DP) and Wi-Fi (uPnP) streaming
- Navigation – featuring text-to-speak, voice destination entry and 3D building display
- Digital instrument panel with Mulliner graphics in a brushed metallic
- LED Welcome lights
- Apple CarPlay®\*
- 60GB solid-state drive (10GB available user space)
- Hidden antennae
- 4G LTE telephone module\*
- POI (search)\*
- Online real time traffic information\*
- Bluetooth and Wi-Fi audio streaming
- Pre-sense braking system (Bentley Safeguard)\*
- Adaptive brake lights\*
- Keyless entry and ignition
- Exit Warning
- Blind Spot Warning
- Park Assist
- Engine stop/start button
- Alarm and immobiliser
- Cruise control
- Reversing camera with graphic screen representation
- Driver and passenger airbags
- Side airbags
- Collision Prevention Assist\*
- Pre-crash, rear\*
- Multi-collision brake\*

### SPECIFICATIONS

- City Specification
- Front Seat Comfort Specification

See the full details of these specifications on page 44.

# Continental GT Mulliner (V8).

## OPTIONAL SPECIFICATION

### EXTERIOR

- Additional exterior paint colours
- Bentley branded brake callipers in Red
- Black lower bumper matrix style grille
- Fixed glass roof with Alcantara blind

### INTERIOR

- Choice of eight additional V8 veneers: Burr Walnut, Crown Cut Walnut, Dark Stained Burr Walnut, Dark Fiddleback Eucalyptus, Koa, Liquid Amber, Piano Black, Tamo Ash (all NCO)
- Choice of dual veneers applied to the upper fascia, with Grand Black veneer on the lower fascia and centre console
- Engine Turned Aluminium to fascia and door waistrails
- Semi-aniline leather to seats and door inserts<sup>†</sup>
- Chrome pinstripe to fascia and door decoration panels (only available on optional veneers)
- One mono-tone and four duo-tone colourways with a choice from 15 colours

### CONVENIENCE

- Heated windscreen<sup>†\*</sup>
- Battery charger<sup>\*</sup>
- Air ioniser
- Illuminated Bentley sill and treadplate
- Parking heater<sup>†</sup>
- Remote controlled garage door opener<sup>\*</sup>
- Valet key
- First aid kit and warning triangle
- Windstop (NCO) (Convertible only)
- Warning triangle<sup>\*</sup>
- Tool kit and jack<sup>\*</sup>
- Keybox

### TECHNOLOGY

- Adaptive Cruise Control<sup>\*</sup>
- Naim for Bentley audio system
- Inductive phone charger<sup>\*</sup>
- Welcome lighting

- Bentley GPS tracking system<sup>\*</sup>
- Digital TV tuner<sup>\*</sup>

### WHEELS

- Winter wheels and tyres
- Summer tyres<sup>\*</sup>
- All-season tyres<sup>\*</sup>
- Temporary use spare wheel for home<sup>\*</sup>

### SPECIFICATIONS

- Touring Specification<sup>\*</sup>
- Diamond Knurling Specification
- Smokers Specification
- Colour Specification (NCO)

See the full details of these specifications on page 44.

<sup>\*</sup>Market specific.

<sup>\*\*</sup>Only available if the Blackline Specification is selected.

<sup>†</sup>Not available on the Continental GT Mulliner Convertible.

<sup>††</sup>Part of the Colour Specification.

<sup>^</sup>Only available if the Blackline Specification and Mulliner Driving Specification are selected.

Please see your Bentley retailer for the latest information.



# Continental GT Mulliner Convertible (V8).

## STANDARD SPECIFICATION

(in addition to the Continental GT Mulliner coupé specification)

### EXTERIOR

- Automatically folding four layer insulated fabric roof in three colours: Black, Blue, Grey

### INTERIOR

- Eight interior V8 roof colours: Beluga, Camel, Grey, Light Grey, Magnolia, New Blue, Red, Saddle
- Quilted contrast and highlight stitching on tonneau cover
- Two rear seats with centre stowage including 12 volt socket and one USB charging point
- Ski hatch not available
- Front Seat Comfort Specification has the additional features for Convertible of the Neck Warmer

## OPTIONAL SPECIFICATION

(in addition to the Continental GT Mulliner coupé specification)

### EXTERIOR

- Choice of four additional exterior roof colours: Dark Brown, Claret, Dark Grey Metallic and Tweed

### INTERIOR

- Wind deflector (NCO)

# Discover the Continental GT V8.

To discover the possibilities with our configurator or visualiser, please visit [BentleyMotors.com](https://www.bentleymotors.com) or contact your local Bentley retailer.



## Continental GT V8

Engine: 4.0 litre V8 Petrol twin turbocharged engine  
Max power: 542 bhp / 404 kW / 550 PS @ 6,000 rpm  
Max torque: 568 lb ft / 770 Nm @ 2,000-4,500 rpm  
Transmission: 8-speed dual clutch  
Driveline: Active all-wheel drive  
Top speed: 198 mph / 318 km/h  
0-60 mph / 0-100 km/h: 3.9 / 4.0 second  
Wheelbase: 2,851 mm / 112.2 inch  
Overall length: 4,850 mm / 190.9 inch  
Width (including mirrors): 2,187 mm / 86.1 inch  
Overall height: 1,405 mm / 55.3 inch  
Fuel tank: 90 litres / 20 gallons / 24 US gallons  
Boot volume: 358 litres / 12.64 cu ft  
Unladen weight (EU): 2,165 kg / 4,773 lb  
Gross weight (EU): 2,725 kg / 6,008 lb

## Fuel consumption (WLTP Cycle)

Low: 14.6 mpg / 19.4 l/100km  
Medium: 22.6 mpg / 12.5 l/100km  
High: 27.4 mpg / 10.3 l/100km  
Extra High: 26.4 mpg / 10.7 l/100km  
Combined: 23.3 mpg / 12.1 l/100km  
CO<sub>2</sub> combined: 275 g/km  
Driving range: 462.3 miles / 744 km

## Fuel consumption (NEDC Cycle – WLTP Equivalent)<sup>†</sup>

Urban: 17.4 mpg / 16.2 l/100km  
Extra Urban: 33.2 mpg / 8.5 l/100km  
Combined: 25.0 mpg / 11.3 l/100km  
CO<sub>2</sub> emissions: 263 g/km

## Fuel consumption (EPA Cycle)<sup>\*</sup>

City driving (US): TBC  
Highway driving (US): TBC  
Combined (US): TBC

<sup>†</sup>NEDC Drive Cycle (WLTP equivalent) figures applicable to the following countries:

Andorra, Austria, Belgium, Cyprus, Czech Republic, Denmark, Finland, France, Georgia, Germany, Greece, Hungary, Ireland, Israel, Italy, Latvia, Lithuania, Luxembourg, Malta, Monaco, Netherlands, Norway, Poland, Portugal, Romania, Spain, Sweden, Switzerland, Turkey, Ukraine, United Kingdom, Vietnam.

<sup>\*</sup>2020 EPA estimates not available at time of publication.  
See [www.fueleconomy.gov](https://www.fueleconomy.gov) for updated information.

Your mileage will vary and depends on several factors including your driving habits and vehicle condition.



# Discover the Continental GT V8 Convertible.

To discover the possibilities with our configurator or visualiser, please visit [BentleyMotors.com](https://www.bentleymotors.com) or contact your local Bentley retailer.



## Continental GT V8 Convertible

Engine: 4.0 litre V8 Petrol twin turbocharged engine  
Max power: 542 bhp / 404 kW / 550 PS @ 6,000 rpm  
Max torque: 568 lb ft / 770 Nm @ 2,000-4,500 rpm  
Transmission: 8-speed dual clutch  
Driveline: Active all-wheel drive  
Top speed: 198 mph / 318 km/h  
0-60 mph / 0-100 km/h: 4.0 / 4.1 seconds  
Wheelbase: 2,849 mm / 112.2 inch  
Overall length: 4,850 mm / 190.9 inch  
Width (including mirrors): 2,187 mm / 86.1 inch  
Overall height: 1,399 mm / 55.08 inch  
Fuel tank: 90 litres / 20 gallons / 24 US gallons  
Boot volume: 235 litres / 8.3 cu ft  
Unladen weight (EU): 2,335 kg / 5,148 lb  
Gross weight (EU): 2,800 kg / 6,173 lb

## Fuel consumption (WLTP Cycle)

Low: 14.0 mpg / 20.2 l/100km  
Medium: 21.7 mpg / 13.0 l/100km  
High: 26.4 mpg / 10.7 l/100km  
Extra High: 25.9 mpg / 10.9 l/100km  
Combined: 22.6 mpg / 12.5 l/100km  
CO<sub>2</sub> combined: 284 g/km  
Driving range: 447 miles / 720 km

## Fuel consumption (NEDC Cycle – WLTP Equivalent)<sup>†</sup>

Urban: 17.0 mpg / 16.6 l/100km  
Extra Urban: 31.7 mpg / 8.9 l/100km  
Combined: 24.1 mpg / 11.7 l/100km  
CO<sub>2</sub> emissions: 266 g/km

## Fuel consumption (EPA Cycle)<sup>\*</sup>

City driving (US): TBC  
Highway driving (US): TBC  
Combined (US): TBC

<sup>†</sup>NEDC Drive Cycle (WLTP equivalent) figures applicable to the following countries:

Andorra, Austria, Belgium, Cyprus, Czech Republic, Denmark, Finland, France, Georgia, Germany, Greece, Hungary, Ireland, Israel, Italy, Latvia, Lithuania, Luxembourg, Malta, Monaco, Netherlands, Norway, Poland, Portugal, Romania, Spain, Sweden, Switzerland, Turkey, Ukraine, United Kingdom, Vietnam.

<sup>\*</sup>2020 EPA estimates not available at time of publication.  
See [www.fueleconomy.gov](https://www.fueleconomy.gov) for updated information.

Your mileage will vary and depends on several factors including your driving habits and vehicle condition.

# Discover the Continental GT Speed.

To discover the possibilities with our configurator or visualiser, please visit [BentleyMotors.com](https://www.bentleymotors.com) or contact your local Bentley retailer.



## Continental GT Speed (W12)\*

Engine: 6.0 litre Twin-turbocharged W12 TSI

Max power: 650 bhp / 485 kW / 659 PS @ 5,000-6,000 rpm

Max torque: 900 Nm / 664 lb ft @ 1,500-5,000 rpm

Transmission: 8-speed dual clutch

Driveline: Active all-wheel drive

Top speed: 208 mph / 335 km/h

0-60 mph / 0-100 km/h: 3.5 / 3.6 seconds

Wheelbase: 2,851 mm / 112.2 inch

Overall length: 4,850 mm / 190.9 inch

Width (including mirrors): 2,187 mm / 86.1 inch

Overall height: 1,405 mm / 55.3 inch

Fuel tank: 90 litres / 20 gallons / 24 US gallons

Boot volume: 358 litres / 12.64 cu ft

Unladen weight (EU): 2,273 kg / 5,011 lb

Gross weight (EU): 2,725 kg / 6,008 lb

\*Subject to final type approval

Continental GT Speed and Continental GT Speed Convertible is available to order in all markets, except mainland China, and is currently not available in EU27, UK, Switzerland, Israel, Ukraine, Norway, Turkey and Vietnam.

Your mileage will vary and depends on several factors including your driving habits and vehicle condition.



# Discover the Continental GT Speed Convertible.

To discover the possibilities with our configurator or visualiser, please visit [BentleyMotors.com](https://www.bentleymotors.com) or contact your local Bentley retailer.



## Continental GT Speed Convertible (W12)\*

Engine: 6.0 litre Twin-turbocharged W12 TSI

Max power: 650 bhp / 485 kW / 659 PS @ 5,000-6,000 rpm

Max torque: 900 Nm / 664 lb ft @ 1,500-5,000 rpm

Transmission: 8-speed dual clutch

Driveline: Active all-wheel drive

Top speed: 208 mph / 335 km/h

0-60 mph / 0-100 km/h: 3.6 / 3.7 seconds

Wheelbase: 2,849 mm / 112.2 inch

Overall length: 4,850 mm / 190.9 inch

Width (including mirrors): 2,187 mm / 86.1 inch

Overall height: 1,399 mm / 55.1 inch

Fuel tank: 90 litres / 20 gallons / 24 US gallons

Boot volume: 235 litres / 8.3 cu ft

Unladen weight (EU): 2,436 kg / 5,370 lb

Gross weight (EU): 2,865 kg / 6,316 lb

\*Subject to final type approval

Continental GT Speed and Continental GT Speed Convertible is available to order in all markets, except mainland China, and is currently not available in EU27, UK, Switzerland, Israel, Ukraine, Norway, Turkey and Vietnam.

Your mileage will vary and depends on several factors including your driving habits and vehicle condition.

# Discover the Continental GT Mulliner (V8).

To discover the possibilities with our configurator or visualiser, please visit [BentleyMotors.com](https://www.bentleymotors.com) or contact your local Bentley retailer.



## Continental GT Mulliner (V8)

Engine: 4.0 litre V8 Petrol twin turbocharged engine  
Max power: 542 bhp / 404 kW / 550 PS @ 6,000 rpm  
Max torque: 568 lb ft / 770 Nm @ 2,000-4,500 rpm  
Transmission: 8-speed dual clutch  
Driveline: Active all-wheel drive  
Top speed: 198 mph / 318 km/h  
0-60 mph / 0-100 km/h: 3.9 / 4.0 second  
Wheelbase: 2,851 mm / 112.2 inch  
Overall length: 4,850 mm / 190.9 inch  
Width (including mirrors): 2,187 mm / 86.1 inch  
Overall height: 1,405 mm / 55.3 inch  
Fuel tank: 90 litres / 20 gallons / 24 US gallons  
Boot volume: 358 litres / 12.64 cu ft  
Unladen weight (EU): 2,165 kg / 4,773 lb  
Gross weight (EU): 2,725 kg / 6,008 lb

## Fuel consumption (WLTP Cycle)

Low: 14.6 mpg / 19.4 l/100km  
Medium: 22.6 mpg / 12.5 l/100km  
High: 27.4 mpg / 10.3 l/100km  
Extra High: 26.4 mpg / 10.7 l/100km  
Combined: 23.3 mpg / 12.1 l/100km  
CO<sub>2</sub> combined: 275 g/km  
Driving range: 462.3 miles / 744 km

## Fuel consumption (NEDC Cycle – WLTP Equivalent)<sup>†</sup>

Urban: 17.4 mpg / 16.2 l/100km  
Extra Urban: 33.2 mpg / 8.5 l/100km  
Combined: 25.0 mpg / 11.3 l/100km  
CO<sub>2</sub> emissions: 263 g/km

## Fuel consumption (EPA Cycle)\*

City driving (US): TBC  
Highway driving (US): TBC  
Combined (US): TBC

<sup>†</sup>NEDC Drive Cycle (WLTP equivalent) figures applicable to the following countries:

Andorra, Austria, Belgium, Cyprus, Czech Republic, Denmark, Finland, France, Georgia, Germany, Greece, Hungary, Ireland, Israel, Italy, Latvia, Lithuania, Luxembourg, Malta, Monaco, Netherlands, Norway, Poland, Portugal, Romania, Spain, Sweden, Switzerland, Turkey, Ukraine, United Kingdom, Vietnam.

\*2020 EPA estimates not available at time of publication.  
See [www.fueleconomy.gov](https://www.fueleconomy.gov) for updated information.

Your mileage will vary and depends on several factors including your driving habits and vehicle condition.



# Discover the Continental GT Mulliner Convertible (V8).

To discover the possibilities with our configurator or visualiser, please visit [BentleyMotors.com](https://www.bentleymotors.com) or contact your local Bentley retailer.



## Continental GT Mulliner Convertible (V8)

Engine: 4.0 litre V8 Petrol twin turbocharged engine  
Max power: 542 bhp / 404 kW / 550 PS @ 6,000 rpm  
Max torque: 568 lb ft / 770 Nm @ 2,000-4,500 rpm  
Transmission: 8-speed dual clutch  
Driveline: Active all-wheel drive  
Top speed: 198 mph / 318 km/h  
0-60 mph / 0-100 km/h: 4.0 / 4.1 seconds  
Wheelbase: 2,849 mm / 112.2 inch  
Overall length: 4,850 mm / 190.9 inch  
Width (including mirrors): 2,187 mm / 86.1 inch  
Overall height: 1,399 mm / 55.08 inch  
Fuel tank: 90 litres / 20 gallons / 24 US gallons  
Boot volume: 235 litres / 8.3 cu ft  
Unladen weight (EU): 2,335 kg / 5,148 lb  
Gross weight (EU): 2,800 kg / 6,173 lb

## Fuel consumption (WLTP Cycle)

Low: 14.0 mpg / 20.2 l/100km  
Medium: 21.7 mpg / 13.0 l/100km  
High: 26.4 mpg / 10.7 l/100km  
Extra High: 25.9 mpg / 10.9 l/100km  
Combined: 22.6 mpg / 12.5 l/100km  
CO<sub>2</sub> combined: 284 g/km  
Driving range: 447 miles / 720 km

## Fuel consumption (NEDC Cycle – WLTP Equivalent)<sup>†</sup>

Urban: 17.0 mpg / 16.6 l/100km  
Extra Urban: 31.7 mpg / 8.9 l/100km  
Combined: 24.1 mpg / 11.7 l/100km  
CO<sub>2</sub> emissions: 266 g/km

## Fuel consumption (EPA Cycle)<sup>\*</sup>

City driving (US): TBC  
Highway driving (US): TBC  
Combined (US): TBC

<sup>†</sup>NEDC Drive Cycle (WLTP equivalent) figures applicable to the following countries:

Andorra, Austria, Belgium, Cyprus, Czech Republic, Denmark, Finland, France, Georgia, Germany, Greece, Hungary, Ireland, Israel, Italy, Latvia, Lithuania, Luxembourg, Malta, Monaco, Netherlands, Norway, Poland, Portugal, Romania, Spain, Sweden, Switzerland, Turkey, Ukraine, United Kingdom, Vietnam.

<sup>\*</sup>2020 EPA estimates not available at time of publication.  
See [www.fueleconomy.gov](https://www.fueleconomy.gov) for updated information.

Your mileage will vary and depends on several factors including your driving habits and vehicle condition.

# Photography.

Colour specification of cars illustrated:

**Continental GT V8: Dragon Red**

Beluga leather interior

Liquid Amber and Piano Black veneer

**Continental GT V8 Convertible: Dragon Red**

Beluga leather interior

Liquid Amber and Piano Black veneer

**Continental GT Speed: Magnetic**

Beluga and Hotspur leather and

Alcantara interior with Carbon Fibre

**Continental GT Speed Convertible: Peacock**

Linen and Imperial Blue leather and Alcantara interior with

Dark Stained Burr Walnut over Grand Black veneer

**Continental GT Mulliner: White Sand**

Beluga, Linen and Gold interior



The models presented in this brochure include optional specifications. Specifications, standard equipment, options, fabrics and colours are subject to change without notice. Your Bentley retailer will always have the latest information. The name 'Bentley' and the 'B' wings design are registered trademarks of Bentley Motors Limited. Bentley Motors Limited acknowledges the rights of third parties in other trademarks.

The models shown may include European and non-European specifications. © March 2021.