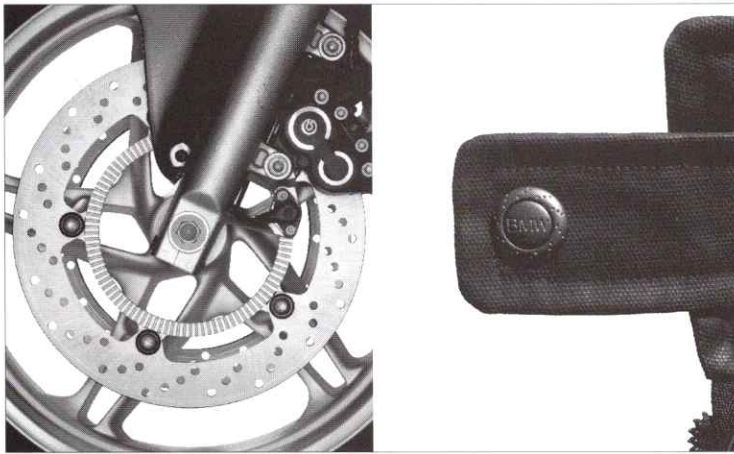


**BMW Lifestyle.**  
Product information.





Page 2/3



Page 4/5

**City coat.**

Wearable all year round: long, classic men's jacket made of black PU-coated cotton. Can be detached from the quilted lining jacket by a zip - lining can be worn separately. Ideal for "open-air" driving thanks to wind-barrier cuffs and a collar with an integrated hood, which can be turned up. With breast pocket, two patch pockets, a zipped wallet pocket on the fifth line. Sizes: S - XXL.

**Order no. 80 12 9 421 850 - 854**

**Quilted lining jacket.**

Ideal for layering: wear separately - as a light jacket - or as a warming lining for the city coat. Black quilted lining jacket with two push-in pockets and practical zip-in system. Sizes: S - XXL.

**Order no. 80 12 9 421 845 - 849**

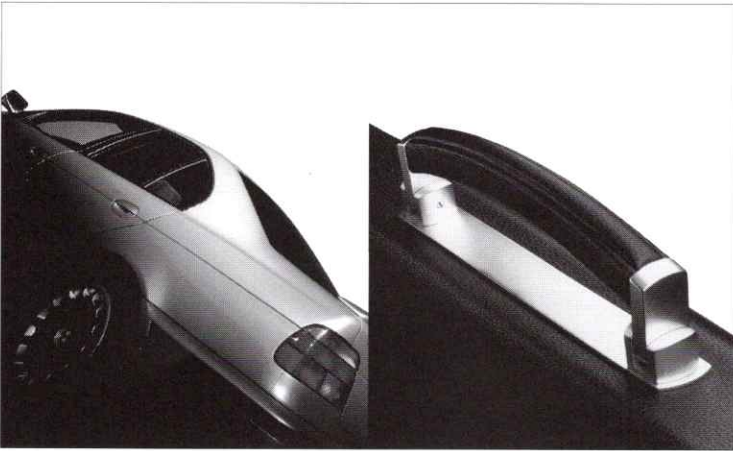


Page 6/7

**Summer blouson.**

Fashionable blouson made of Teflon-coated cotton. With a zipped breast pocket and two push-in pockets. Practical wind-barrier cuffs, adjustable hood in the collar and key pocket on the sleeve. Sizes: S - XXL, unisex.

**Order no. 80 12 9 421 840 - 844**



**Page 10/11**

**Briefcase.**

Hand-crafted. Three separate inner compartments. High-quality internal arrangement with pockets for papers, flight tickets, etc. Secured by a lockable catch. Special BMW design: leather-covered metal carrying handle. Material: cowhide (C). Size: 40,5 x 45 x 7,5 cm.

**Order no. 80 22 9 422 076**

**Attaché case.**

Hand-crafted on a wooden frame. With 2 combination locks, exclusive leather-covered metal handle and metal panel. The details are well thought-out: the internal arrangement is suitable for virtually all documents. Material: cowhide (C). Size: 45 x 47,5 x 9,5 cm.

**Order no. 80 22 9 422 075**

**Business case.**

For the most individual demands. This case developed for BMW with a special internal arrangement: 1 main compartment for a file, a compartment for a laptop, separate pockets for papers and documents plus a removable pocket for toiletries and underwear and an outer compartment for tickets, passport, etc. Secured by a lockable catch. With leather-covered solid metal handle and metal plate in BMW design. Material: cowhide (C). Size: 39 x 49,5 x 22,5 cm.

**Order no. 80 22 9 422 077**

**Men's manicure set.**

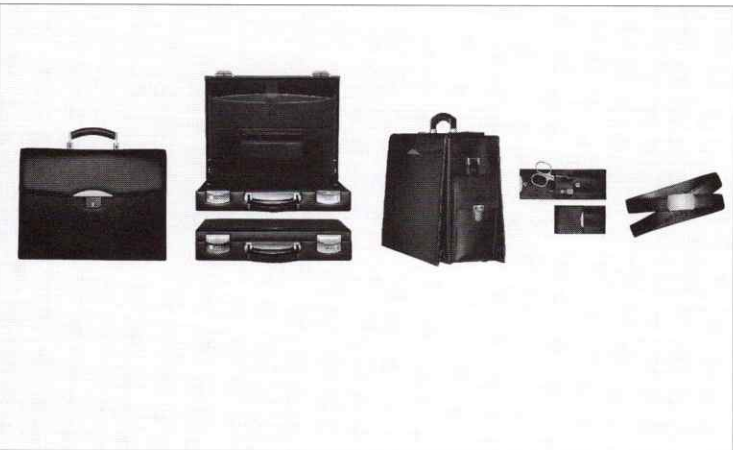
Hand-worked. With high-quality crafted utensils: cuticle and nail scissors, nail file, cuticle pusher and hangnail tool. Material: cowhide (F). Size: 10,5 x 5,5 x 2 cm.

**Order no. 80 21 9 422 055**

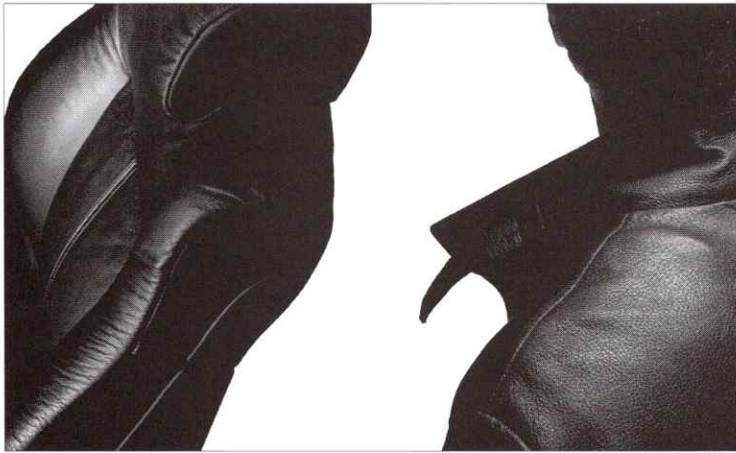
**Leather belt.**

The highest quality craftsmanship: leather belt for men. With banded profile and finely crafted buckle in BMW design. Material: cowhide (F). Length: 110 cm.

**Order no. 80 21 9 422 060**







Page 12/13



Page 14/17

**Men's leather jacket.**

Sporty men's leather jacket made of high-quality heavy buckskin in elegant brown-black. With removable lambskin collar which can be turned up and removable lining waistcoat. Wind-barrier cuffs, two external pockets and a zipped pocket and mobile phone pocket. Sizes: S - XXL.

**Order no. 80 11 9 421 860 - 864**

**Men's leather blouson.**

Fashionable men's blouson made of lamb's nappa in brown-black. With removable lambskin collar which can be turned up, wind-barrier cuffs and removable lining waistcoat. Four pockets and a mobile phone pocket both on the inside and on the outside. Sizes: S - XXL.

**Order no. 80 11 9 421 855 - 859**

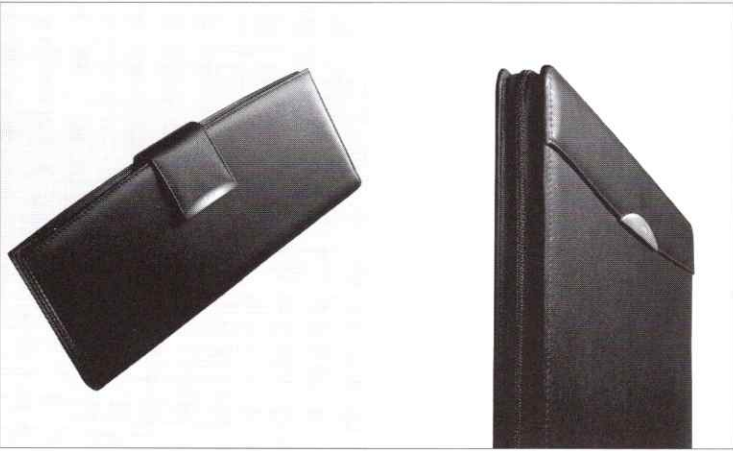


Page 15/16

**Ladies leather jacket.**

Made of high-quality buckskin. Fashionable and sporty; brown-black leather jacket for ladies. With removable skin collar which can be turned up, separable lining waistcoat which allows you to reach through into inner jacket pockets and wind-barrier cuffs. Outside: two pockets. Inside: a zipped pocket, a strip pocket and a mobile phone pocket. Ladies sizes: S, M, L.

**Order no. 80 11 9 422 020 - 022**



**Page 20/21**

**Visiting cards binder.**

Hand-worked. With flap closure and magnetic catch. Insertion pockets left and right. Practical ring mechanism for approx. 160 business cards on transparent plastic pages. Material: cowhide (F). Size: 32 x 14 x 4 cm.

**Order no. 80 21 9 422 043**

**Leather ring binder.**

High quality hand-crafted workmanship. With 6-ring system, ideal for "Time/system". All-round zip, A5 compartment, 2 insertion pockets, credit card compartment and zipped pocket for spare car key. With 2 loops for writing utensils. Material: cowhide (F). Size: 26.5 x 21 x 5 cm. The planner insert can be ordered direct from: Time/system (UK) Ltd., Samson House, Milton Keynes MK10 0AJ. Tel.: +44 908-292211 Fax: +44 908-282280

**Order no. 80 21 9 422 045**

**Visiting card case.**

Hand-worked edge-to-edge. 2 insertion pockets, note pad and device for a writing utensil. Material: cowhide (F).

**Order no. 80 21 9 422 059**

**Card case.**

High quality, hand-worked. Fits US cheque cards and ideal for business cards. Hand-crafted. With two compartments. Material: cowhide (F).

**Order no. 80 21 9 422 071**

**Mobile phone case.**

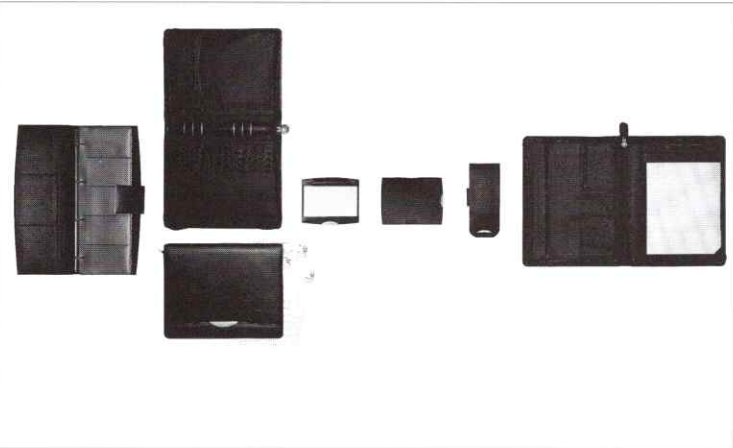
Hand-worked. With press-stud closure. The practical elastic makes the case suitable for a variety of models of mobile phone. On the back is an insertion compartment for notes and a loop for a pencil. (Pencil not included.) Material: cowhide (F).

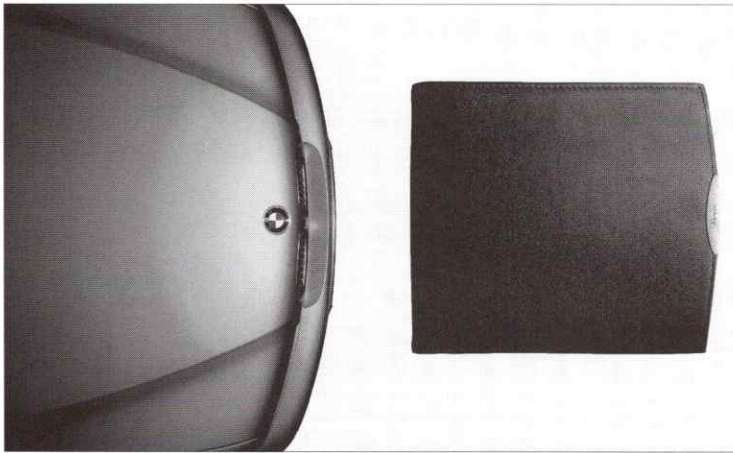
**Order no. 80 21 9 422 058**

**Document case.**

Hand-worked, practical and attractive with all-round zip. Pocket for A4 binder and note pad, storage system for writing utensils; large pocket with side compartments, separate pocket with zip, compartment for credit cards. Material: cowhide (F). Refined metal rest.

**Order no. 80 21 9 422 042**



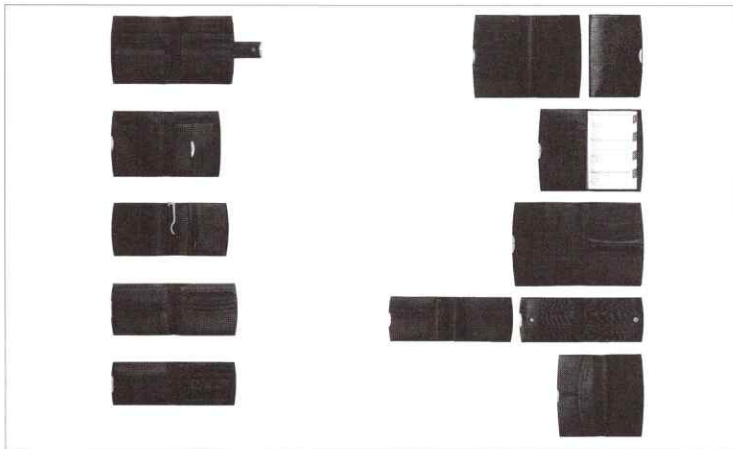


**Page 22/23**

**Men's purse.**

High quality hand workmanship. Two large compartments for banknotes, insertion pocket, pocket with press-stud for coins, zipped pocket for spare car key and various credit card compartments. Material: cowhide (F). Size: 12 x 10.5 x 2.5 cm.

**Order no. 80 21 9 422 048**



**Page 24/25**

**Currency purse.**

High quality, hand-worked. 4 compartments for different currencies. Several insertion compartments for credit cards and cheques, 2 compartments for small change plus 1 zipped pocket for car key and coins. The purse is closed by a leather flap with a press-stud. Material: cowhide (F). Size: 12.5 x 12.5 x 3 cm.

**Order no. 80 21 9 422 057**

**Purse.**

In portrait format. Hand-worked edge-to-edge. With 2 banknote compartments, 1 zipped compartment, several insertion pockets and large coin compartment. Material: cowhide (F). Size: 12 x 10.5 x 2.5 cm.

**Order no. 80 21 9 422 070**

**Clip pouch.**

Hand-worked. With handy banknote clip and an extra zipped compartment for a spare car key and charge cards. Material: cowhide (F). Size: 10.5 x 9.5 x 1.5 cm.

**Order no. 80 21 9 422 047**

**Credit card case.**

Hand-worked edge-to-edge. Precisely matched to European and Asian dimensions, but can also be used on other continents. In the international style: 2 full-length compartments for banknotes. 1 compartment for several credit cards plus a further fold-out pocket with credit card compartments. Useful extra zipped compartment for a spare car key. Material: cowhide (F). Size: 12 x 9.5 x 2 cm.

**Order no. 80 21 9 422 056**

**Credit card case.**

Hand-worked edge-to-edge. Fits US money exactly, but can also be used for other currencies. With full-length compartment for banknotes and a separate zipped compartment for a spare car key, as well as 12 credit card compartments. Material: cowhide (F). Size: 11.5 x 8 x 2 cm.

**Order no. 80 21 9 422 049**

**Wallet.**

High-quality, hand-crafted. Fold-over pocket for credit cards, zipped pocket for spare car key and various other compartments. Material: cowhide (F). Size: 19 x 9.5 x 2 cm.

**Order no. 80 21 9 422 050**

**Wallet with appointments planner.**

Always up to date: wallet and appointments planner in one. Plus 1 insertion compartment for banknotes and compartments for Eurocheques and credit cards. Material: cowhide (F). Size: 16.5 x 10 x 1.5 cm.

**Order no. 80 21 9 422 054**

**French wallet.**

High quality, hand-worked. With many inner compartments. Exact fit for French papers and passes as well as for credit cards and banknotes. Material: cowhide (F).

**Order no. 80 21 9 422 073**

**Italian wallet.**

Hand-worked edge-to-edge. Banknote pocket with cheque pocket. Suitable for credit cards and passes. 1 zipped pocket for spare car key or loose change. Material: cowhide (F).

**Order no. 80 21 9 422 072**

**Narrow wallet.**

High-quality hand workmanship. Exactly matched to Asian dimensions, but can also be used in all other countries. High quality workmanship. Fold-over pocket with 2 compartments for banknotes and insertion compartments for cheque and credit cards. Separate insertion pockets and zipped compartment for spare car key. Material: cowhide (F).

**Order no. 80 21 9 422 051**





Page 26/27

**Zip-up polo shirt.**

Fashionable cut with small side slits and BMW embroidery. Sizes: S - XXL, unisex.

**Black, order no. 80 14 9 421 935 - 939**

**Emerald, order no. 80 14 9 421 940 - 944**



Page 28/29

**Polo sweater.**

Made of 100% pure new wool in super-wash quality. Long, straight cut with small side slits. Collar area and embroidery in modern contrasting colours. Eye-catching patch pocket with BMW embroidery. Sizes: S - XXL, unisex.

**Blue, order no. 80 13 9 421 905 - 909**

**Red, order no. 80 13 9 421 910 - 914**

**Emerald, order no. 80 13 9 421 915 - 919**

**Polo sweater.**

Made of 100% pure new wool in super-wash quality. Long, straight cut with small side slits. Tone-on-tone - patch pocket with BMW embroidery. Sizes: S - XXL, unisex.

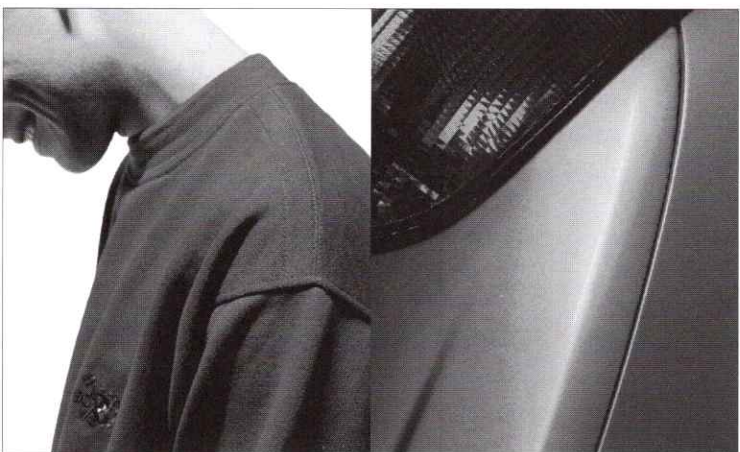
**Avocado, order no. 80 13 9 421 900 - 904**

**Royal, order no. 80 13 9 421 895 - 899**

**Black, order no. 80 13 9 421 890 - 894**

**Bandana „Paisley“. 100% silk. Size: 56.5 x 56.5 cm.**

**Order no. 80 16 9 422 019**



Page 30/31

**Sweatshirt.**

Sporty sweatshirts in 100% cotton. With round neck and BMW embroidery. Long and straight cut with small side slits. Sizes: S - XXL, unisex.

**Royal, order no. 80 14 9 421 950 - 954**



Page 32/33

**Short-sleeved polo shirt.**

The classic piqué polo shirt. Optimum wearing comfort is guaranteed by the functional material Tactel Aquator. Nicely discreet patch breast pocket with tone-on-tone BMW embroidery.

Sizes: S - XXL, unisex.

**Navy, order no. 80 14 9 421 920 - 924**

**Royal, order no. 80 14 9 421 930 - 934**

**Avocado, order no. 80 14 9 421 925 - 929**

**Sweatshirt.**

Sporty sweatshirt in 100% cotton. With round neck and BMW embroidery. Long and straight cut with small side slits. Sizes: S - XXL, unisex.

**Petrol, order no. 80 14 9 421 945 - 949**



Page 34/35

**Sweaters "Genova" and "Bologna".**

Classic sweaters. With round neck and BMW embroidery on breast. Made of 100% pure new wool in super-wash quality. Sizes: S - XXL, unisex.

**"Genova", order no. 80 13 9 421 880 - 884**

**"Bologna", order no. 80 13 9 421 885 - 889**

**Reversible sweater.**

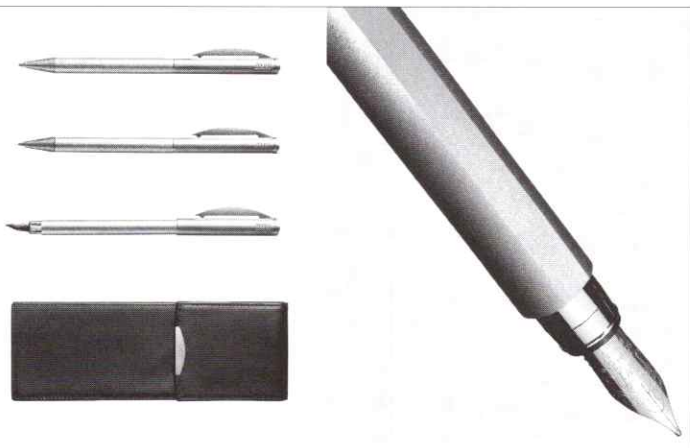
Made of 100% pure new wool in super-wash quality. With round neck. In classic colour combination of anthracite/putty. Sizes: S - XXL, unisex.

**Order no. 80 13 9 421 875 - 879**



Page 36/37





#### Page 38/39

##### Writing utensils:

- Titanium-coated surface.
- Stamped BMW wordmark.
- Heavy-duty, flexible clip.

##### Ball-point pen.

Tested to 12,000 metres of writing. Propelling mechanism with standard Parker system large-capacity refill.

**Order no. 80 24 9 422 104**

##### Propelling pencil.

For standard leads of thickness 0.5 mm.

**Order no. 80 24 9 422 106**

##### Fountain pen.

With ink guidance system and plunger.

**Order no. 80 24 9 422 105**

##### Writing utensils case.

Hand-worked edge-to-edge. To fit 3 BMW writing utensils. Handy small box shape with button closure. Material: cowhide (F). Size: 16.5 x 6 x 2.5 cm.

**Order no. 80 21 9 422 044**



#### Page 40/41

##### Ladies quilted reversible jacket.

Elegant or sporty for women, depending on which way out you wear it: quilted reversible jacket with four zipped pockets. This jacket is a refined plain brown on one side and has a sporty quilted look in black on the other. Can be worn separately or zipped into the brown or black ladies jacket. Ladies sizes: S, M, L.

**Order no. 80 12 9 422 029 - 031**

##### Ladies fleece lining jacket.

In casual leisure look. Jacket made of quilted fleece. With adjustable hood, draw-string at hips and two push-in pockets. Can be worn separately or zipped into the brown or black ladies jacket. Ladies sizes: S, M, L.

**Order no. 80 12 9 422 032 - 034**

##### Ladies jacket, brown.

Elegant jacket in short coat cut. With two pockets and a zipped outer pocket. Allows you to reach through into the pockets of the zip-in lining jacket. Can be combined with the fleece lining jacket and the quilted reversible jacket. Ladies sizes: S, M, L.

**Order no. 80 12 9 422 026 - 028**

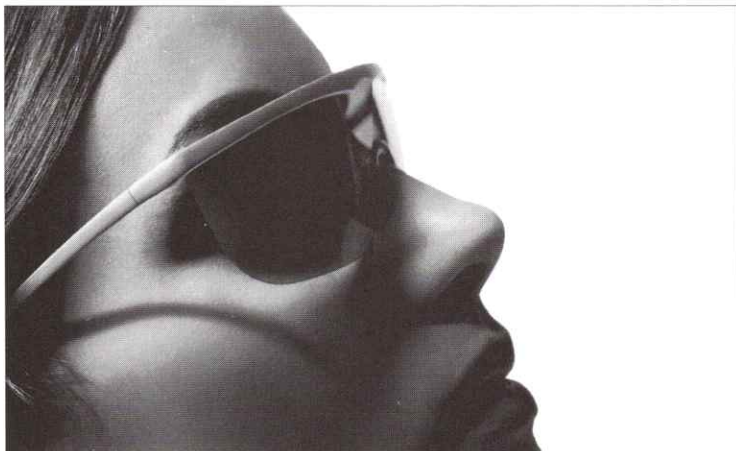
##### Ladies jacket, black.

Jacket in short trench cut. With belt, allows you to reach through to the pockets of the zip-in lining jacket. Fashionable collar panel and two push-in pockets. Both the quilted waistcoat jacket and the elegant quilted reversible jacket can be zipped in. Ladies sizes: S, M, L.

**Order no. 80 12 9 422 023 - 025**



#### Page 42/43



**Sunglasses "Active".**

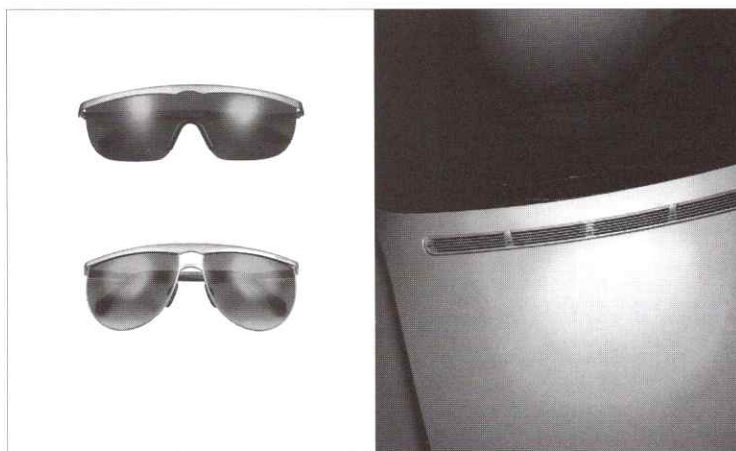
Nickel-silver frame. With stamped BMW insignia on glasses frame. Grey shield. Crash-tested with airbag triggered.

**Order no. 80 25 9 422 041**

**Sunglasses "Titan".**

An eye for pure high-tech. Frame made of 100% titanium. With stamped BMW insignia on glasses frame. Grey graduated lenses. Crash-tested with airbag triggered.

**Order no. 80 25 9 422 040**





**Page 50/51**

**Ladies wide purse.**

Hand-worked edge-to-edge. Ideal for banknotes and passes, 1 main compartment with several divisions, 2 insertion pockets. On the back is a zipped compartment for change and a spare car key. Material: cowhide (F). Size: 11 x 19 x 20 cm.

**Order no. 80 21 9 422 068**

**Ladies wallet.**

Hand-worked edge-to-edge. Insertion pockets for banknotes, zipped pocket, credit card compartments and additional flap pocket with 3 large insertion pockets. Original tongue closure with press-stud. Material: cowhide (F). Size: 18.5 x 11 x 2 cm.

**Order no. 80 21 9 422 069**

**Ladies purse.**

Hand-worked edge-to-edge. Coin compartment and separate zipped pocket for spare car key. On the back are several compartments for banknotes and credit cards with tongue closure. Material: cowhide (F). Size: 12 x 10 x 3 cm.

**Order no. 80 21 9 422 062**

**Make-up case.**

High quality hand workmanship. Exclusive and indispensable for when you're out and about. Leather bag with loose flap. With removable, leather-framed mirror and spacious inner compartment for cosmetics. The main section is closed with a zip. Material: cowhide (F).

**Order no. 80 21 9 422 067**

**Travel jewellery case.**

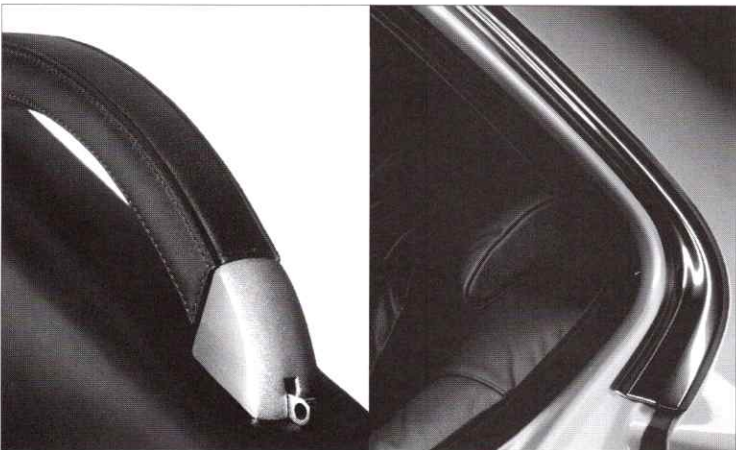
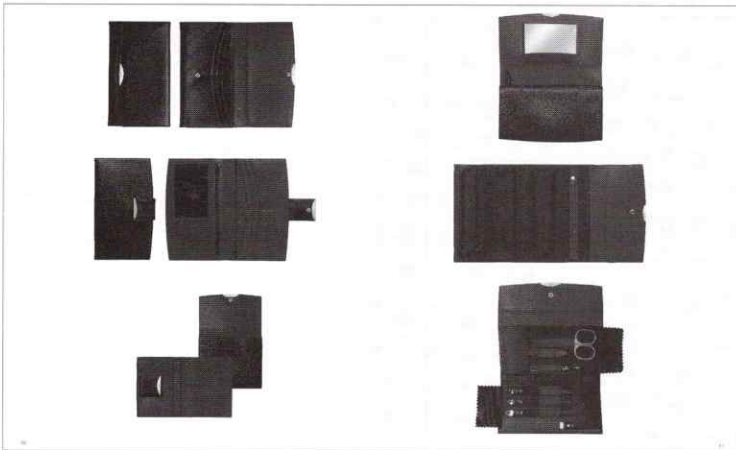
Hand-worked. The internal divisions are a jewel in themselves: all the compartments are made of lined linen fabric. Separate divisions for rings, bracelets and chains. Closes with a magnetic clasp. Material: cowhide (F). Size: 18 x 13 x 4 cm.

**Order no. 80 21 9 422 066**

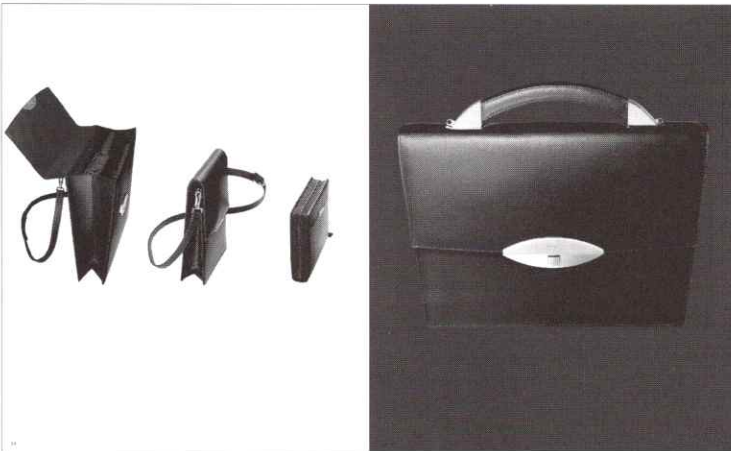
**Manicure set.**

Hand-worked. Folds out with 7-piece high-quality instrument set: cuticle and nail scissors, nail file and tweezers plus cuticle pusher and hangnail tool. Material: cowhide (F). Size: 16 x 8.5 x 3 cm.

**Order no. 80 21 9 422 063**







**Page 54/55**

**Ladies briefcase.**

High-quality hand craftsmanship. Two large inner compartments for A4 documents plus an inside pocket for papers and flight tickets. Very practical: it even has room for the Ladies small handbag and the Ladies leather ring binder (neither item is included). A shoulder strap can be attached to the pleasantly shaped handle designed by BMW. Material: cowhide (F).

**Order no. 80 22 9 422 074**

**Ladies small handbag.**

High-quality hand craftsmanship. Can also be used as an insert in the Ladies briefcase. Closes with magnetic clasp. Especially practical adjustable shoulder strap. 1 compartment for flight tickets and credit cards plus a separate zipped compartment for important small items such as a spare car key. Material: cowhide (F). Size: 23 x 17 x 5 cm.

**Order no. 80 21 9 422 065**

**Ladies leather ring binder.**

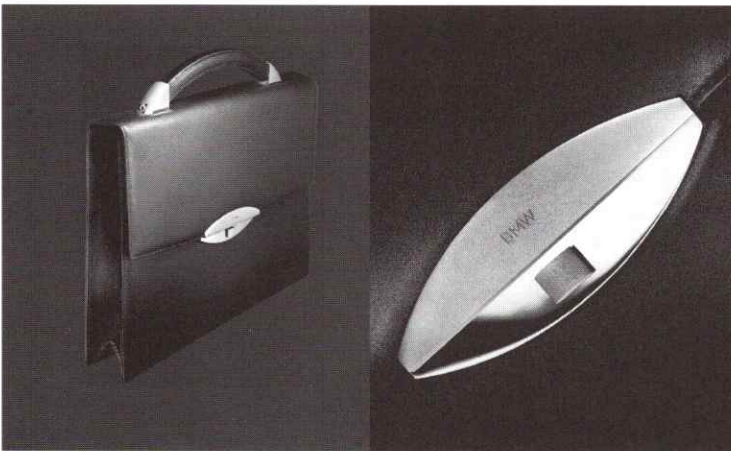
High quality hand workmanship. With practical 6-ring mechanism suitable for "Time/system". With all-round zip, system calendar and 2 insertion pockets. Side pockets for credit cards, 1 loop for a writing utensil and a zipped pocket for a spare car key. Material: cowhide (F). Size: 20.5 x 15.5 x 3.5 cm. The planner insert can be ordered direct from: Time/system (UK) Ltd., Samson House, Milton Keynes MK10 0AJ. Tel.: +44 908-292211 Fax: +44 908-282280

**Order no. 80 21 9 422 061**

**Ladies handbag.**

Hand-crafted. In the current leisure-and-business look. Extravagant clasp and handle in the BMW design, shoulder strap and fashionable metal handle. 1 large main compartment with 1 zipped pocket plus 1 separate inner pocket for papers, flight tickets, driving licences and credit cards. Material: cowhide (F). Size: 30 x 36.5 x 5.5 cm

**Order no. 80 21 9 422 064**



**Page 56/57**



**Page 58/59**

**T-shirt.**

Made of high-quality cotton piqué. With round neck and discreet tone-on-tone BMW embroidery. Sizes: S - XXL, unisex.

**Sun, order no. 80 14 9 421 960 - 964**

**Red, order no. 80 14 9 421 955 - 959**

**Green, order no. 80 14 9 421 965 - 969**

**Bandana "Rosette".**

100% silk. Size: 56.5 x 56.5 cm.

**Red, order no. 80 16 9 422 018**

**Blue, order no. 80 16 9 422 017**



Page 60/61

**Scarf "Paisley".**

100% wool. Size: 159 x 69 cm.

**Navy, order no. 80 16 9 422 013**

**Bordeaux, order no. 80 16 9 422 015**

**Scarf "Paisley".**

100% silk chiffon. Size: 158 x 68 cm.

**Bordeaux, order no. 80 16 9 422 016**

**Navy, order no. 80 16 9 422 014**

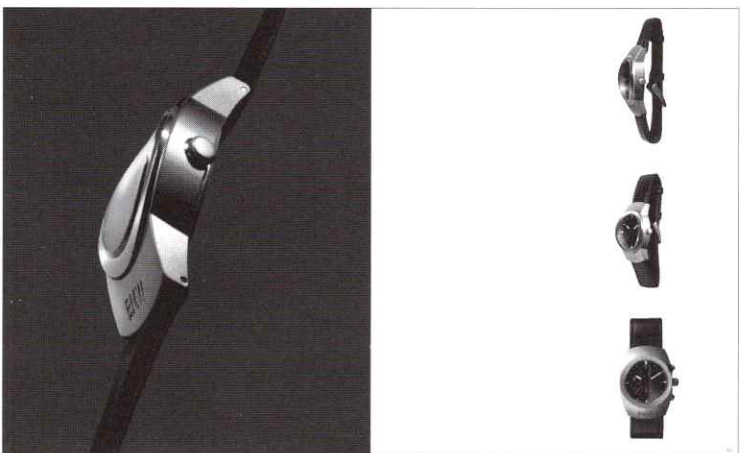
**Head-scarf "Motion".**

100% silk. Size: 88 x 88 cm.

**Order no. 80 16 9 422 011**



Page 62/63



Page 64/65

**Watch "Large".**

High-quality housing made of stainless steel with sapphire glass. With Swiss movement and leather strap. Waterproof down to 50 m.

**Order no. 80 26 9 422 102**

**Watch "Medium".**

Precision and functionality go hand in hand here. High-quality housing made of stainless steel with sapphire glass. With Swiss movement and leather strap. Waterproof down to 50 m.

**Order no. 80 26 9 422 103**

**Automatic chronograph.**

Mechanically-automatic chronograph movement. The pinnacle of the art of Swiss watch-making: Valjoux 7750. Housing made of 100% titanium with non-reflecting sapphire glass. Lunette made of scratch-resistant tungsten carbide. Leather strap. Stainless steel clasp.

**Order no. 80 26 9 422 101**



**Page 66/67**

**Golf bag.**

Individual bag from the golf bag set. Without triangular case and caddy wagon.  
**Order no. 82 22 9 419 262**

**Golf bag set.**

The set comprises a golf bag with rain hood, an ultra-light caddy and two large-capacity triangular cases with carrying handles. The bag holds a complete 14-piece set of golf clubs and can be used with a caddy wagon or as a bag with a shoulder strap. (Golf clubs not included.) Loops for tees, umbrella holder. The golf bag and case are made of especially durable material. The special design allows 2 golf bags, 2 caddy wagons and 4 triangular cases to be transported in the boot of a BMW in any current BMW series (except 3 Series convertible and Z3 roadster).  
**Order no. 82 22 9 419 263**

**Cabrio cap.**

Made of black chevrette nappa.  
**Order no. 80 16 9 422 035**

**Scarf "Flockprint".**

Top fabric 100% wool, bottom fabric 100% silk. Size: 140 x 43 cm.  
**Order no. 80 16 9 422 012**



**Page 68/69**

**Tie "Epsilon".**

Red. 100% silk.  
**Order no. 80 16 9 422 006**

**Bow-tie "Pistoni".**

Yellow. 100% silk.  
**Order no. 80 16 9 422 003**

**Braces "Pistoni".**

Yellow. 100% silk.  
**Order no. 80 16 9 422 004**



**Page 70/71**

**Bow-tie "Epsilon".**

Red. 100% silk.  
**Order no. 80 16 9 422 007**

**Braces "Epsilon".**

Red. 100% silk.  
**Order no. 80 16 9 422 008**

**Tie "Pistoni".**

100% silk.  
**Blue, order no. 80 16 9 422 002**  
**Yellow, order no. 80 16 9 422 001**

**Tie "Paisley".**

100% silk.  
**Order no. 80 16 9 422 000**

**Tie "Cogs".**

100% silk.  
**Red, order no. 80 16 9 421 999**  
**Blue, order no. 80 16 9 421 998**

**Tie "Epsilon".**

Green. 100% silk.  
**Order no. 80 16 9 422 005**





#### Page 72/73

##### Travel bag.

High quality, hand-crafted. Relaxed elegance en route with leather bag in a practical size with a strong metal frame. A large main compartment with zip. Side pocket for papers, tickets, etc. and a removable inner pocket for important documents. Material: cowhide (C). Size: 35 x 60 x 45 cm.

**Order no. 80 22 9 422 078**



#### Page 74/75

##### Sports and travel bag.

Outer compartment with zip and loops for 2 tennis racquets, plus additional side pocket. Leather trim and metal panel on the front bearing the BMW insignia and a zipped compartment with a BMW zipper. Large inner pocket with practical compartment for wet things. With carrying handles and shoulder strap. Material: hard-wearing polyester and PVC in the original design of the BMW Z3 roadster interior. (M). Length: 60 cm.

**Order no. 80 22 9 422 084\***

##### Umbrella.

In black with embroidered BMW insignia. Automatic opening and closing. Handle in special BMW design.

**Order no. 80 23 9 422 091**

##### Suit bag.

With metal handle, shoulder strap, pivoting hanger and side closure. 1 large outer pocket, 2 inner pockets and 3 clothes hooks. All-round zip along entire length and width of opened suit bag. Leather trim with metal panel on the front bearing the BMW insignia and a zipped compartment with a BMW zipper. Material: hard-wearing polyester and PVC in the original design of the BMW Z3 roadster interior. (M). Size (L x W x H): 110 x 60 x 10 cm.

**Order no. 80 22 9 422 081\***

##### Flight case.

On wheels. Leather-covered metal handle and pull-out grip. Fixing system for 1 briefcase. Front with leather trim and metal panel bearing the BMW insignia and a zipped compartment with a BMW zipper. High-quality interior: inner pocket with cover, carefully crafted with a double seam. Belts for holding items of clothing. Small, moveable pocket with press-studs. The zip is secured by a lock. Material: hard-wearing polyester and PVC in the original design of the BMW Z3 roadster interior. (M). Size (L x W x H): 36 x 30 x 59 cm.

**Order no. 80 22 9 422 082\***

##### Cultural travel bag.

Made of waterproof, hard-wearing polyester and PVC. With hanging device and 5 different inner pockets.

**Order no. 80 22 9 422 083\***

##### Large suitcase.

With leather-covered metal handle and strong frame. Leather trim and metal panel on the front bearing the BMW insignia and a zipped compartment with a BMW zipper. Two wheels and a pull-out handle. All-round zip and additional lock. Inside 2 belts for holding items of clothing plus 2 side pockets. Material: hard-wearing polyester and PVC in the original design of the BMW Z3 roadster interior. (M). Size: 75 x 21 x 50 cm.

**Order no. 80 22 9 422 080\***

##### Small suitcase.

In handy size: 68 x 19 x 47 cm. Material: hard-wearing polyester and PVC in the original design of the BMW Z3 roadster interior. (M).

**Order no. 80 22 9 422 079\***

\*Available from October 1997



**Page 76/77**

**All-weather jacket.**

The optimal item of clothing for leisure and sports: petrol-coloured jacket made of GORE-TEX® 2-ply laminate. Draw-string at hips and waist, flexible sleeve closures, built-in storm-hood and many functional pocket solutions make this jacket an all-weather professional. Another benefit is that zipping in the leisure waistcoat or leisure jacket turns it into a winter jacket with a flick of the wrist. Sizes: S - XXL, unisex.

**Order no. 80 12 9 421 820 - 824**



**Page 78/79**

**Leisure jacket.**

Fleecy and warm: fleece jacket in petrol and anthracite. A jacket which can be worn separately or - like the waistcoat - in combination with the parka or the all-weather jacket. With practical draw-string at collar, hips and waist. Two zipped pockets. Sizes: S - XXL, unisex.

**Order no. 80 12 9 421 830 - 834**

**Leisure waistcoat.**

Here the function decides the trend. The red-check fleece waistcoat can be worn on its own or in combination zipped into the parka or the all-weather jacket. With draw-string at collar, hips and waist and two zipped pockets. Sizes: S - XXL, unisex.

**Order no. 80 12 9 421 825 - 829**

**Sweater "Dry Skin".**

In black or red, sporty and super-light. This active-breathing functional shirt made of Malden Polartec (100% PES) allows your skin to breathe keeping your body dry. Sizes: S - XXL, unisex.

**Black, order no. 80 14 9 421 306 - 310**

**Red, order no. 80 14 9 422 159 - 163**

Available in "Red" from October 1997.



**Page 80/81**

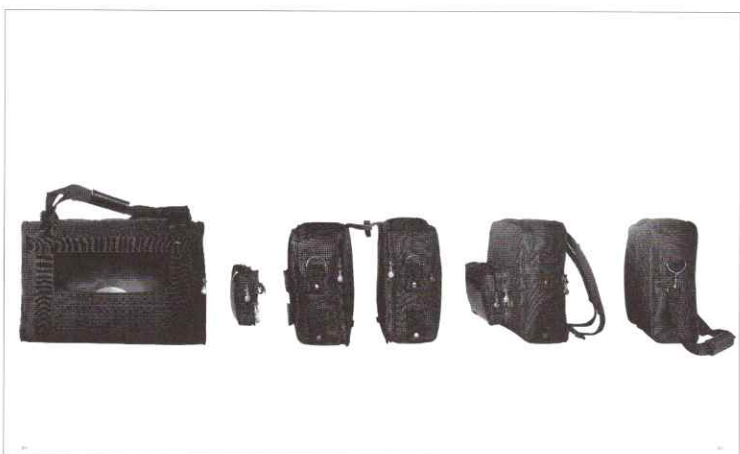
**Multi-function parka.**

Anthracite-mix sporty parka with GORE-TEX® membrane. Ideal for trekking, cycling, sailing and skiing since waterproof, wind-tight and active-breathing. Draw-string at hips and waist. Equipped with adjustable sleeve closures, two concealed zipped pockets, two outer pockets and a pocket for glasses. Practical storm hood with panel. Combined with the zip-in leisure waistcoat or leisure jacket, this parka can be used all year round. Sizes: S - XXL, unisex.

**Order no. 80 12 9 421 815 - 819**



Page 82/83  
**BMW "Super-tech" mountain bike.**  
 (see "BMW Bikes" catalogue)



Page 84/85  
**Multi-function bag.**  
 To meet your leisure needs. Waterproof bag for sports or travelling made of hard-wearing polyester and PVC in the original design of the BMW Z3 roadster interior. Front pocket with leather flap and cast fittings with BMW wordmark and magnetic catch. Main zip with BMW tag. Can be separated into 4 individual bags: 2 rucksacks for mountain sports and rambling, separable travel bags are ideal for car journeys, and bag with compartment for wet things is practical for all types of sport. Material: (M).  
**Order no. 80 22 9 422 085**

**Luggage rack.**  
**Order no. 80 22 9 422 086**



Page 86/87  
**Functional waistcoat.**  
 Functional and can be combined for individual effect. Black waistcoat with hood in the collar, draw-string at hips and waist. With two zipped pockets, a zipped seam pocket and a pocket for your mobile phone. Sizes: M, L, unisex.  
**Order no. 80 12 9 421 996 - 997**

**Reflective T-shirt.**  
 Made of 100% cotton. With reflective strip on collar and side slits and tone-on-tone BMW embroidery. Sizes: S - XXL, unisex.  
**Black, order no. 80 14 9 421 970 - 974**





**Page 88/89**

**Rucksack waistcoat.**

Casual, functional and very fashionable, black waistcoat for sports people, skaters and cyclists. With rucksack integrated into back, reflective material in the back, shoulder and belt areas and a removable flashing light on the left shoulder. The many pockets also make this garment very practical. One size. Unisex.

**Order no. 80 12 9 421 995**

**Reflective T-shirt.**

Made of 100% cotton. With reflective strip on collar and side slits and tone-on-tone BMW embroidery. Sizes: S - XXL, unisex.

**Sanguine, order no. 80 14 9 421 975 - 979**

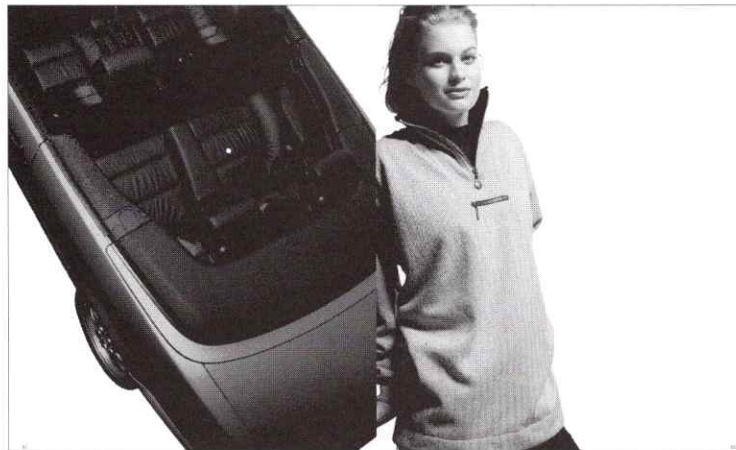


**Page 90/91**

**Sports jacket with pockets.**

Sporty and functional. Blue jacket with detachable waistcoat which can be worn separately and can also be used as a bag. With two zipped pockets and wind-barrier cuffs on sleeves. Plus: removable terry cloth in the collar area. Sizes: S - XXL, unisex.

**Order no. 80 12 9 421 835 - 839**



**Page 92/93**

**Sweatshirt with wind-repellent lining.**

**Gore-XCR®** technology. In putty. Knitted cuffs and elasticated draw-string at waist. The collar with wind-barrier is in a contrasting colour. Small zipped pocket designed for small, important things. Sizes: S - XXL, unisex.

**Order no. 80 14 9 421 990 - 994**



Page 94/95

**Sweatshirt with wind-repellent lining.**

**GORE-XCR®** technology. In navy. Fashionable and functional: collar can be turned up and has wind-barrier in contrasting colour, small zipped pocket and long straight cut. Ideally suited to convertible driving. Sizes: S - XXL, unisex.

**Order no. 80 14 9 421 985 - 989**

**Sweater with wind-repellent lining.**

**GORE-XCR®** technology. Made of 100% pure new wool, super-wash quality. Long and straight cut. With anthracite off-set collar which can be turned up. The ideal companion for sailing or golfing. Sizes: S - XXL, unisex.

**Beige, order no. 80 13 9 421 870 - 874**

**Blue, order no. 80 13 9 421 865 - 869**



Page 96/97

**Pocket lighter in BMW design.**

With quartz electronic ignition at the push of a button. Case: brass with chromium plating. Size: 80 x 27 x 15 mm.

**Order no. 80 23 9 422 089**



Page 98/99

**Key-ring pendant.**

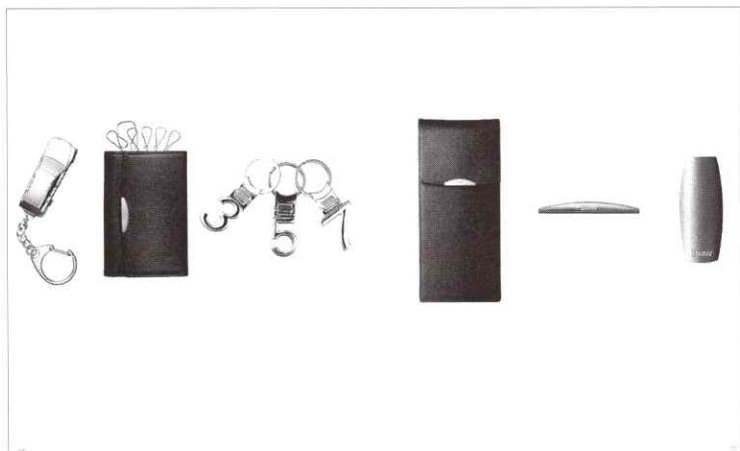
In blasted satin-finish stainless steel.

**Order no. 80 23 9 422 107**

**BMW key-ring pendant.**

Made of rhodanized sterling silver (0.925 standard).

**Order no. 80 23 9 422 090**



#### Page 100/101

##### Key-ring pendant.\*

Model 5 Series touring.  
Order no. 80 55 9 422 099

##### Key-ring pendant.\*

Model 3 Series Saloon (not shown).  
Order no. 80 32 9 420 574

##### Key-ring pendant.\*

Model 3 Series compact (not shown).  
Order no. 80 32 9 420 575

##### Key-ring pendant.\*

Model 3 Series Convertible (not shown).  
Order no. 80 32 9 420 576

##### Key-ring pendant.\*

Model 3 Series touring (not shown).  
Order no. 80 32 9 421 026

##### Key-ring pendant.\*

Model 5 Series Saloon (not shown).  
Order no. 80 32 9 421 025

##### Key-ring pendant.\*

Model 7 Series Saloon (not shown).  
Order no. 80 32 9 420 578

##### Key-ring pendant.\*

Model Z3 roadster (not shown).  
Order no. 80 32 9 421 027

\*Material: silver-plated tin.

##### Key-ring pendant.\*\*

With the symbol of the 3 Series product line.  
Order no. 80 23 9 422 092

##### Key-ring pendant.\*\*

With the symbol of the 5 Series product line.  
Order no. 80 23 9 422 093

##### Key-ring pendant.\*\*

With the symbol of the 7 Series product line.  
Order no. 80 23 9 422 094

\*\* Material: gleaming nickel plate.

##### Key case.

High quality hand workmanship. With 6 snap-links and zipped pocket for spare car key.  
Material: cowhide (F).  
Size: 11.5 x 7 x 2.5 cm.  
Order no. 80 21 9 422 053

##### Glasses case.

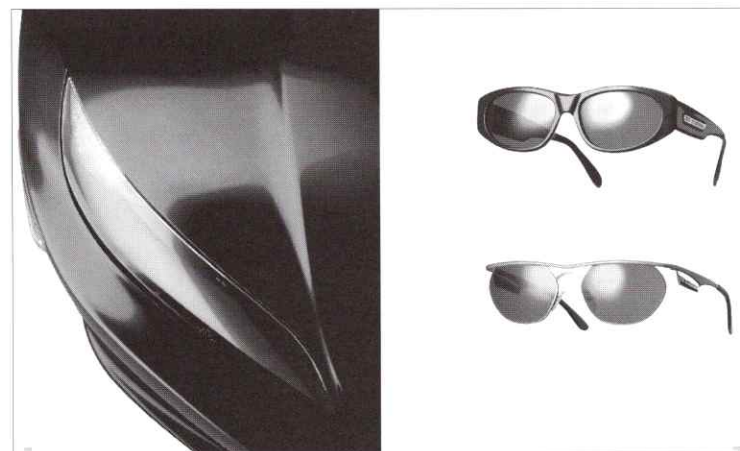
Hand-worked, high-quality leather case suitable for the most varying pairs of glasses thanks to its variable side sections.  
Material: cowhide (F).  
Order no. 80 21 9 422 052

##### Tie clip.

Titanium-plated brass.  
Order no. 80 23 9 422 088

##### Money clip.

Titanium-plated brass.  
Order no. 80 23 9 422 087



#### Page 102/103

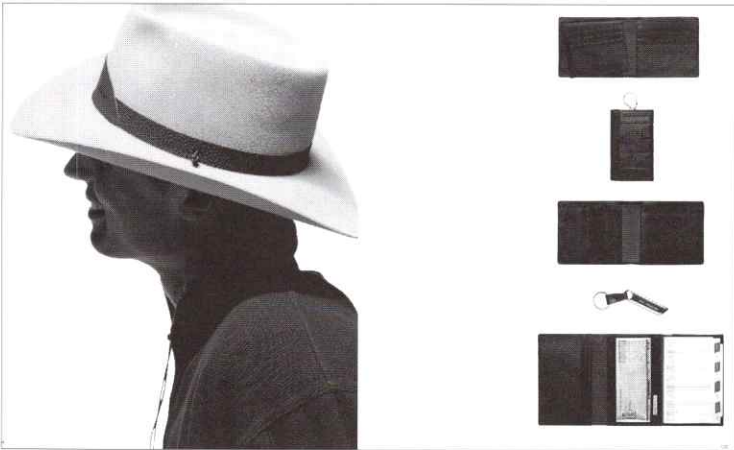
##### Z3 sunglasses, ladies model.

CR 39 lenses with 100% UV protection. Prescription lenses can be fitted. With hard case.  
Order no. 80 35 9 421 126

##### Z3 sunglasses, men's model.

CR 39 lenses with 100% UV protection. Spring hinge. Surface matt ruthenium-coated. Prescription lenses can be fitted. With hard case.  
Order no. 80 35 9 421 127





Page 104/105

**Z3 Western hat.**

Made of finest rabbit hair, giving the felt a wonderfully pleasant surface.

Sizes: S - XL (head size 54/55 - 60/61).

Order no. 80 35 9 421 134 - 137

**Z3 credit card case.**

14 compartments for credit cards, charge cards and business cards. With separate banknote and storage compartment.

Order no. 80 35 9 421 130

**Z3 key case.**

With six snap-links. Press-stud closure.

Order no. 80 35 9 421 131

**Z3 purse.**

Compartments for banknotes, coins, driving licence and five credit cards. Secret compartment.

Order no. 80 35 9 421 132

**Z3 key-ring pendant.**

Made of brass with high-shine chrome-plating, in the same design as the side vent slits of the BMW Z3 roadster.

Order no. 80 35 9 421 132

**Z3 wallet/cheque case.**

With four-language folding calendar. Compartments for Eurocheques and four credit cards, driving licence, passport and other papers.

Order no. 80 35 9 421 129



Page 106/107

**Z3 chronograph.**

Palladium-refined housing, waterproof down to 50 m. Screw-on housing base and crown.

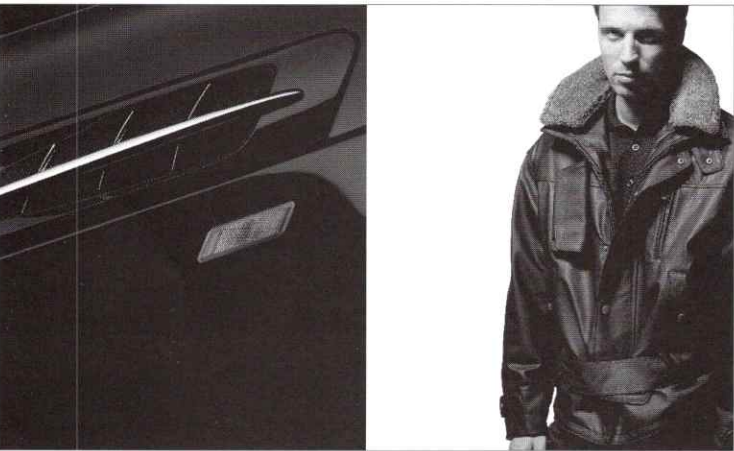
Non-reflecting sapphire glass. Strap made of the same leather as the Z3 roadster interior.

Order no. 80 35 9 421 125

**Z3 watch.**

With palladium-refined housing. Waterproof down to 30 m. With quality Swiss movement and leather strap made of the same leather as the Z3 roadster interior. Functions: hours, minutes and seconds indicators plus date display.

Order no. 80 35 9 421 120



Page 108/109

**Z3 leather jacket.**

Can be turned up, making it ideal for the roadster driver. Black leather jacket made of robust calf nappa. Scotchgard finish. Removable lambskin collar, button-up glasses pocket. Waist and sleeves adjustable in width. One zipped inside pocket. Lightly padded inner lining.

Sizes: S - XXL, unisex.

Order no. 80 35 9 421 155 - 159



**Page 110/111**

**Z3 silk scarf.**

100% silk (crêpe de chine).

Size: 45 x 180 cm.

**Order no. 80 35 9 421 160**

**Z3 leather cap.**

Made of matt, finely-scarred goat's leather. With elastic. Fits all head sizes from 54 to 60.

**Order no. 80 35 9 421 133**

**Z3 sunshield.**

100% cotton. With embroidered lettering.

**White, order no. 80 35 9 421 140**

**Black, order no. 80 35 9 421 141**

**Z3 sweatshirt.**

Patent piqué with the latest **GORE-XCR®** technology. **Wind-repellent** and active-breathing.

In bordeaux. Sizes: S - XXL, unisex.

**Order no. 80 35 9 421 145 - 149**

**Z3 polo shirt.**

In grey-mix two-colour piqué. 100% cotton. Sizes: S - XXL, unisex.

**Order no. 80 35 9 421 150 - 154**



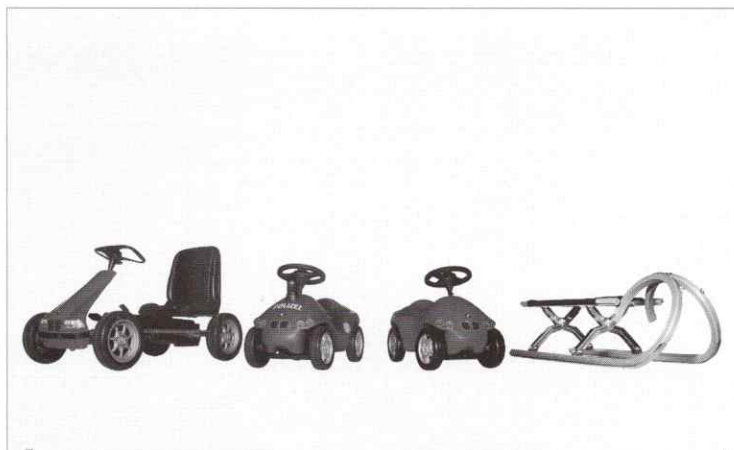
**Page 112/113**

**Junior Bike.**

In the style of the big BMW R 1100 GS: original vehicle for children from 3 - 5 years old.

Special quiet tyres result in good noise reduction. TÜV/GS test mark.

**Order no. 80 83 9 421 144**



**Page 114/115**

**Junior Racer.**

Robust pedal-car for children from 4 - 7 years old (or height 95 - 130 cm). Welded steel frame, chain drive with freewheel, seat position adjustable. Collapsible bonnet and removable seat for transporting in the boot. TÜV/GS test mark.

**Order no. 80 93 9 422 175**

**Baby Racer "Police".**

Ner-ner, ner-ner - here come the police in a brand new Baby Racer format. Design similar to the Baby Racer. TÜV/GS test mark.

**Order no. 80 93 9 422 158**

**Baby Racer.**

Child's vehicle with "two-foot drive" for 1 - 3 year olds. Special quiet tyres result in good noise reduction. Original BMW enamel badges on bonnet and rear, steering wheel in BMW design with integrated horn. TÜV/GS test mark.

**Order no. 80 93 9 421 762**

**Fold-up sledge.**

Winter sports equipment for all the family. Stainless steel runners. Excellent gliding properties and impact reduction. TÜV/GS test mark. When folded up the BMW sledge is 6 cm high and optimally fits into the boot of your BMW.

Size (L x W x H): 110 x 39 x 38 cm, folded up: 110 x 39 x 6 cm.

**Order no. 80 31 9 421 042**

Size Chart for Clothing.

	International	B	F	D	NL	IT	JP	Scan	ES	GB	US
Ladies jackets	S	40/36N	40/36N	36	36	38	11	38	42	10/32	8
	M	42/38N	42/38N	38	38	40	13	40	44	12/34	10
	L	44/40N	44/40N	40	40	42	15	42	46	14/36	12
	XL	46/42N	46/42N	42	42	44	17	44	48	16/38	14
Men's jackets	S	46	46	46	46	46	M	46	46	36	36
	M	48	48	48	48	48	ML	48	48	38	38
	L	50	50	50	50	50	L	50	50	40	40
	XL	52	52	52	52	52	LL	52	52	42	42
	XL	54	54	54	54	54	XL	54	54	44	44
	XXL	56	56	56	56	56	–	56	56	46	46
Unisex items	BMW	Ladies D		Men's D							
	S	=	38-40	=	–						
	M	=	42	=	46						
	L	=	44	=	48-50						
	XL	=	46	=	52-54						
	XXL	=	–	=	56						

The sizes detailed above must be taken as non-binding approximate information for comparison of different sizes used around the world.

- Key:**
- F = fine-textured leather** (small leather items and Ladies leather collection)
- C = coarse-textured leather** (men's leather collection)
- M= mixed materials** (luggage)

Printing errors, omissions and alterations excepted. © BMW AG, Munich, Germany. Reproduction, even of extracts, only with written permission from BMW AG, Munich. This brochure was produced in an environmentally-friendly way using chlorine-free, acid-free paper.



## **Discover the world of BMW.**

You can't describe the BMW Lifestyle in words. You simply have to experience it for yourself. That's why we would like to show you this fascinating collection in person. Your BMW dealer will be pleased to assist you with all aspects, including the exceptional range of BMW bikes and BMW miniatures.



**The ultimate driving machine**