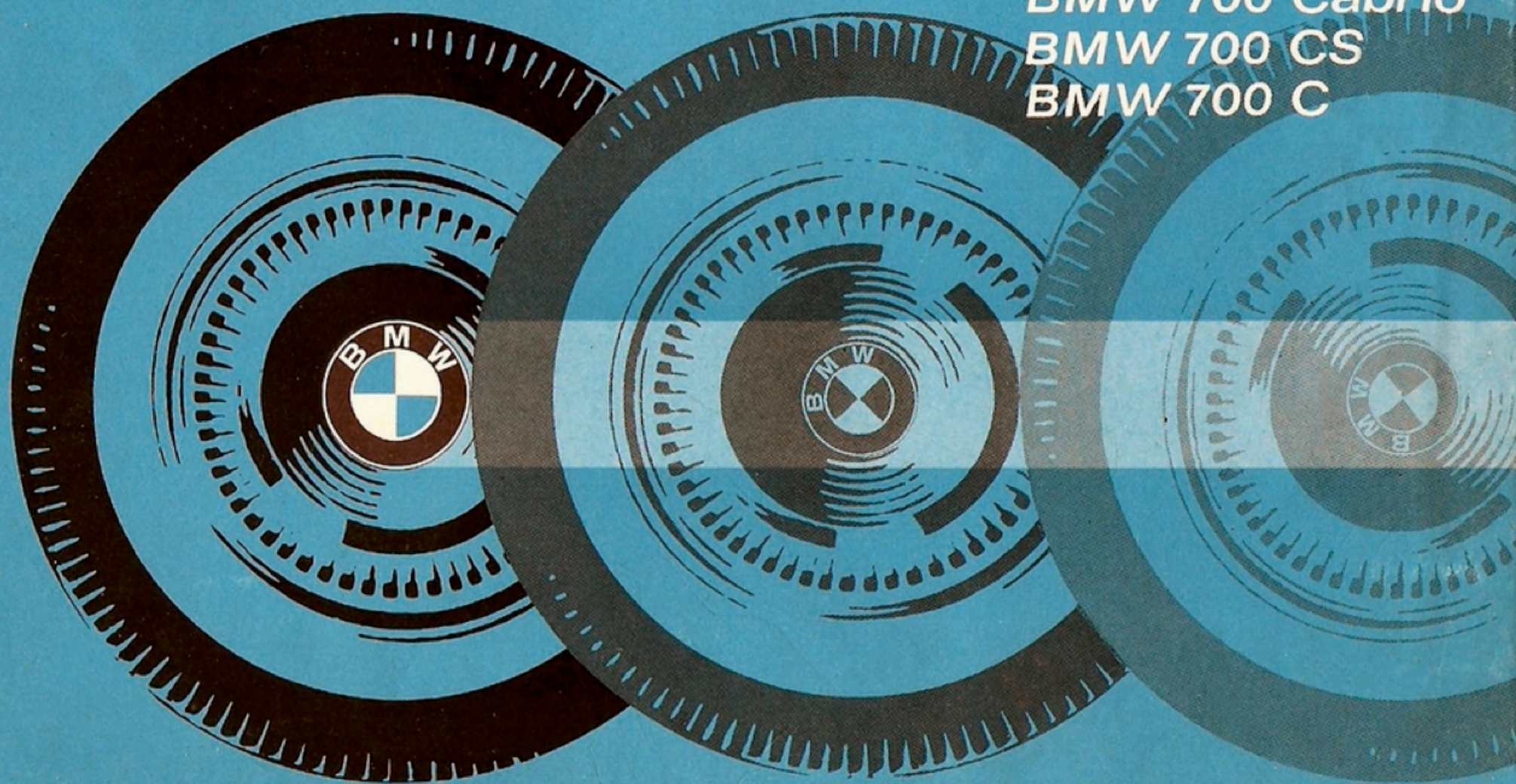
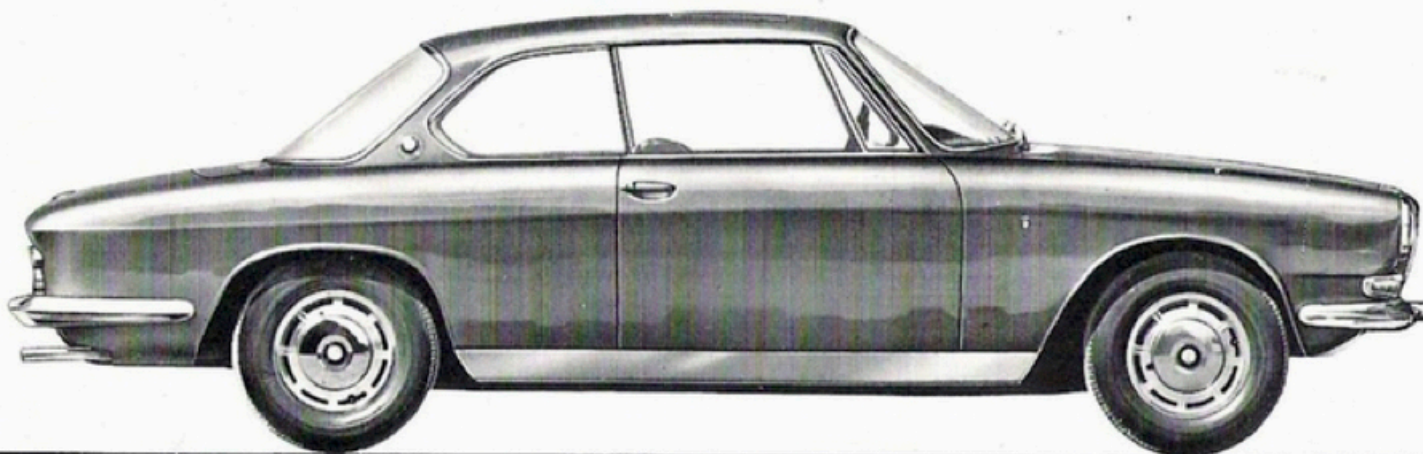


BMW 3200 CS  
BMW 3200 S  
BMW 1500  
BMW 1800  
BMW 1800 TI  
BMW LS Luxus  
BMW LS  
BMW 700 Cabrio  
BMW 700 CS  
BMW 700 C

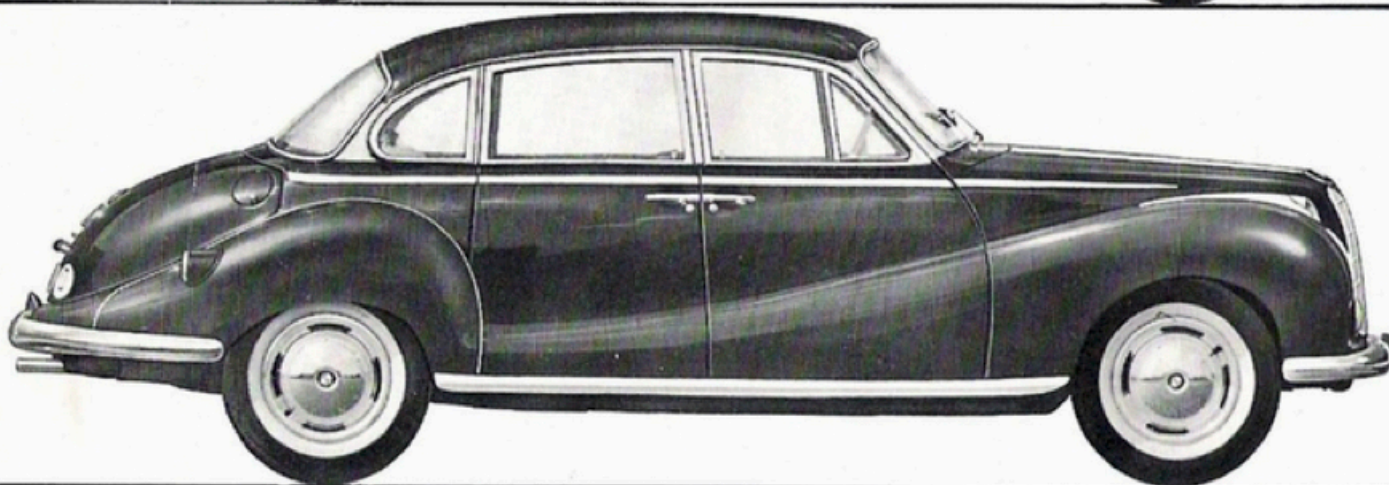






## **BMW 3200 CS**

A car of the international special class with perfect elegance of the Romanic style. Inside luxury for fastidious drivers. The famous V-8-cylinders two carburetors engine guarantees a maximum of driving pleasure. 160 DIN-PS; 185 SAE-HP; 200 km/h top speed; acceleration from 0 to 100 km/h in approx. 13 seconds; disc brake with Hydrovac.

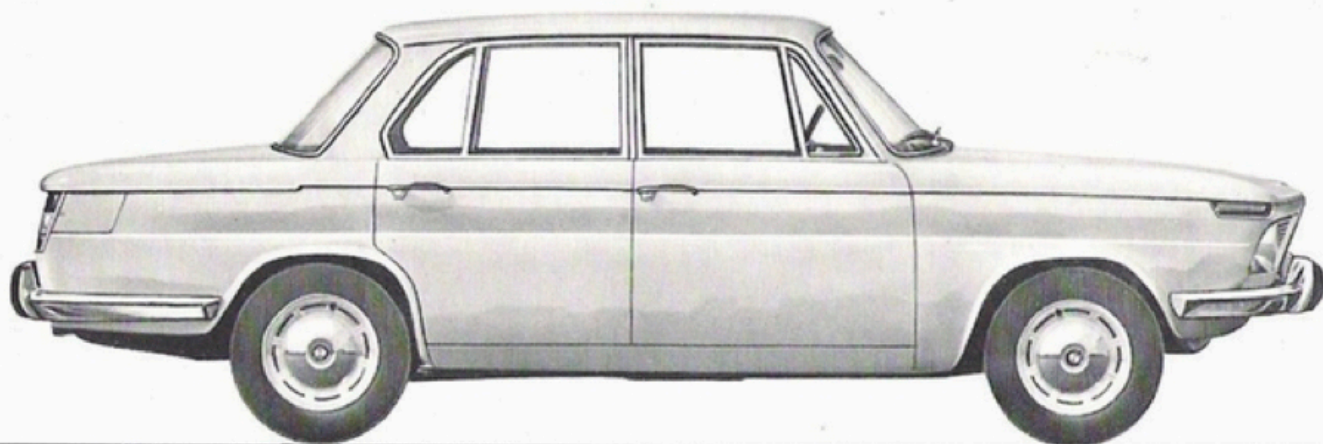


## **BMW 3200 S**

Peak power, safety, and luxury characterize this representative European V-8-cylinders car with all-steel chassis frame. This classical style has confirmed and proved its validity. 160 DIN-PS; 185 SAE-HP; 190 km/h top speed; acceleration from 0 to 100 km/h in approx. 12 seconds; disc brake with Hydrovac.

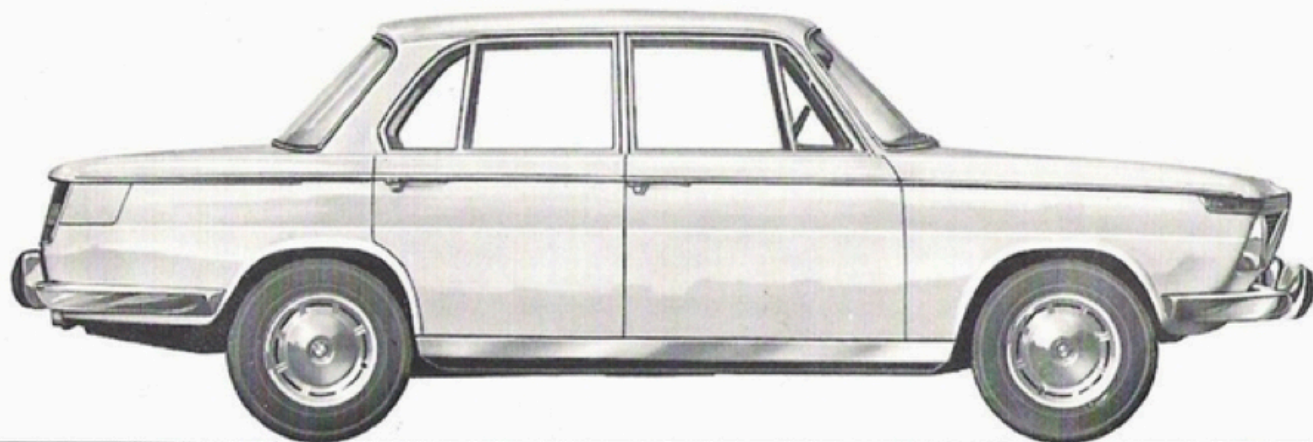


# MANUFACTURING PROGRAM



## **BMW 1500**

A new category. Exceptional in its technical construction, excellent in its driving characteristics, an example in its safety. It has won the "hobby"-Auto-Oscar" for the most beautiful form in its class. 80 DIN-PS; 90 SAE-HP; 150 km/h top speed; acceleration from 0 to 100 km/h in 16,8 seconds; disc brake

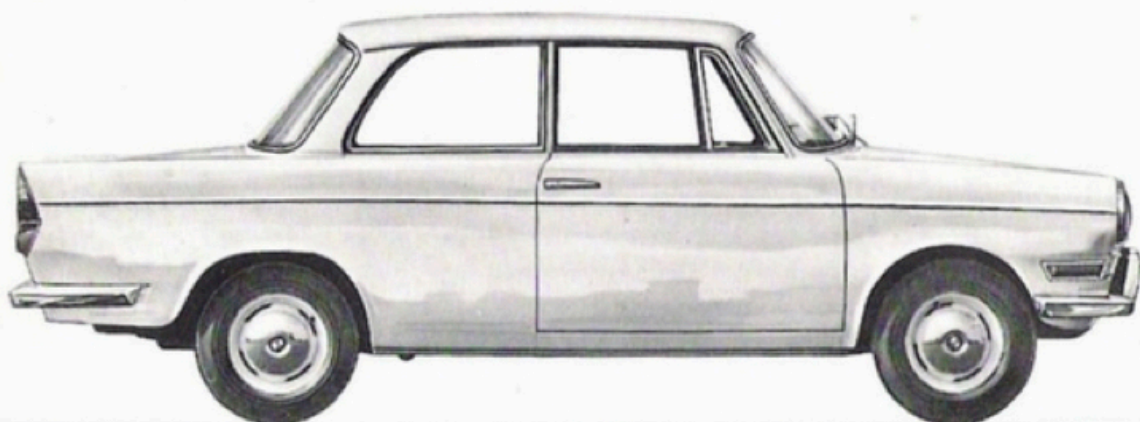


## **BMW 1800**

A new category — a new scale. Better efficiency by means of technical harmony, more security by means of excellent adjusting of all the constructing elements one against the other ones. 90 DIN-PS; 102 SAE-HP; 160 km/h top speed; acceleration from 0 to 100 km/h in 13,2 seconds; disc brake with Mastervac.

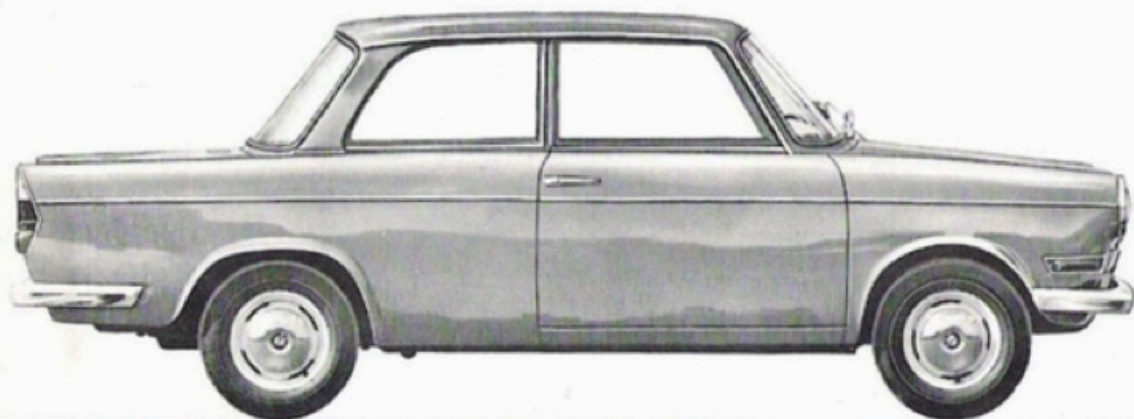
## **BMW 1800 TI**

The sportive version of the BMW 1800. A car of especial high speed, with luxurious equipment. A car for fastidious people. 110 DIN-PS; 124 SAE-HP; 170 km/h top speed; acceleration from 0 to 100 km/h in 11,8 seconds;



## **BMW LS Luxus**

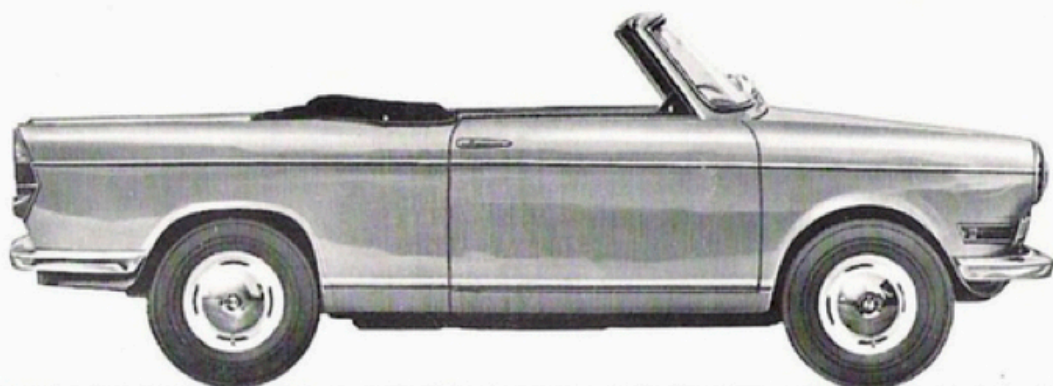
The car with characteristics. Elegant, economical, spacious, and comfortable. Proved 100000 times. The efficient air-cooled opposed-cylinders-motor and the excellent road holding characterize its perfect technical conception. 32 DIN-PS; 38 SAE-HP; 120 km/h top speed; acceleration from 0 to 80 km/h in 17,5 seconds. Rated consumption 5,9 litres per 100 km.



## **BMW LS**

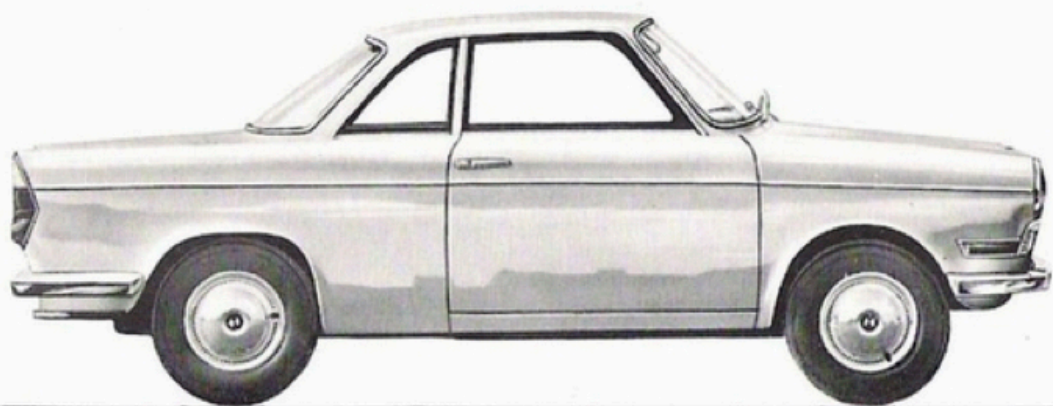
It combines the sublime driving characteristics, the surprising efficiency, and the driving comfort of the BMW LS Luxus with a very favourable price. The same quality — economy-equipment. Air-cooled opposed-cylinders-motor; 32 DIN-PS; 38 SAE-HP; 120 km/h top speed; acceleration from 0 to 80 km/h in 17,5 seconds; rated consumption 5,9 litres per 100 km.





## **BMW 700 Cabrio**

A streamlined cabriolet with sportive character and all good properties of the BMW 700 family. Economical, comfortable, quick, and safe. Air-cooled opposed-cylinders-motor; 40 DIN-PS; 46 SAE-HP; 2 downdraft carburetors with accelerator pump and additional indicator; 135 km/h top speed; acceleration from 0 to 80 km/h in 13 seconds; rated consumption 6,6 litres per 100 km.



## **BMW 700 CS**

The Sport-Coupé, always victorious in many international races and rallies.

Created for the passionate drivers. Air-cooled opposed-cylinders-motor; 2 downdraft carburetors with accelerator pump and additional indicator; independent wheels; sport transmission; 40 DIN-PS; 46 SAE-HP; 135 km/h top speed; acceleration from 0 to 80 km/h in 12,3 seconds; rated consumption 6,6 litres per 100 km.

## **BMW 700 C**

Elegant lines, extraordinary equipment, excellent in its efficiency and an example in its road holding — thus this very beautiful Coupé introduces itself. Proved since many years. — Air-cooled opposed-cylinders-motor, 32 DIN-PS; 38 SAE-HP; 125 km/h; acceleration from 0 to 80 km/h in 14,9 seconds; rated consumption 5,9 litres per 100 km.



In all the streets of the world you are meeting the vehicles  
with the white-blue mark. They answer everywhere the high expectations their  
possessors await of the name of BMW.

Wherever people sets a great store by the line, equipment, reliability,  
and efficiency, there is but one name: BMW.

The authorized BMW workshops all over the world are just so reliable  
as the vehicles with the with white-blue symbol and just so world-wide known  
as the good reputation of BMW. Their business:  
to serve the BMW-drivers — Their endeavour: to satisfy yourselves.

*Bayerische Motoren Werke AG München*

