



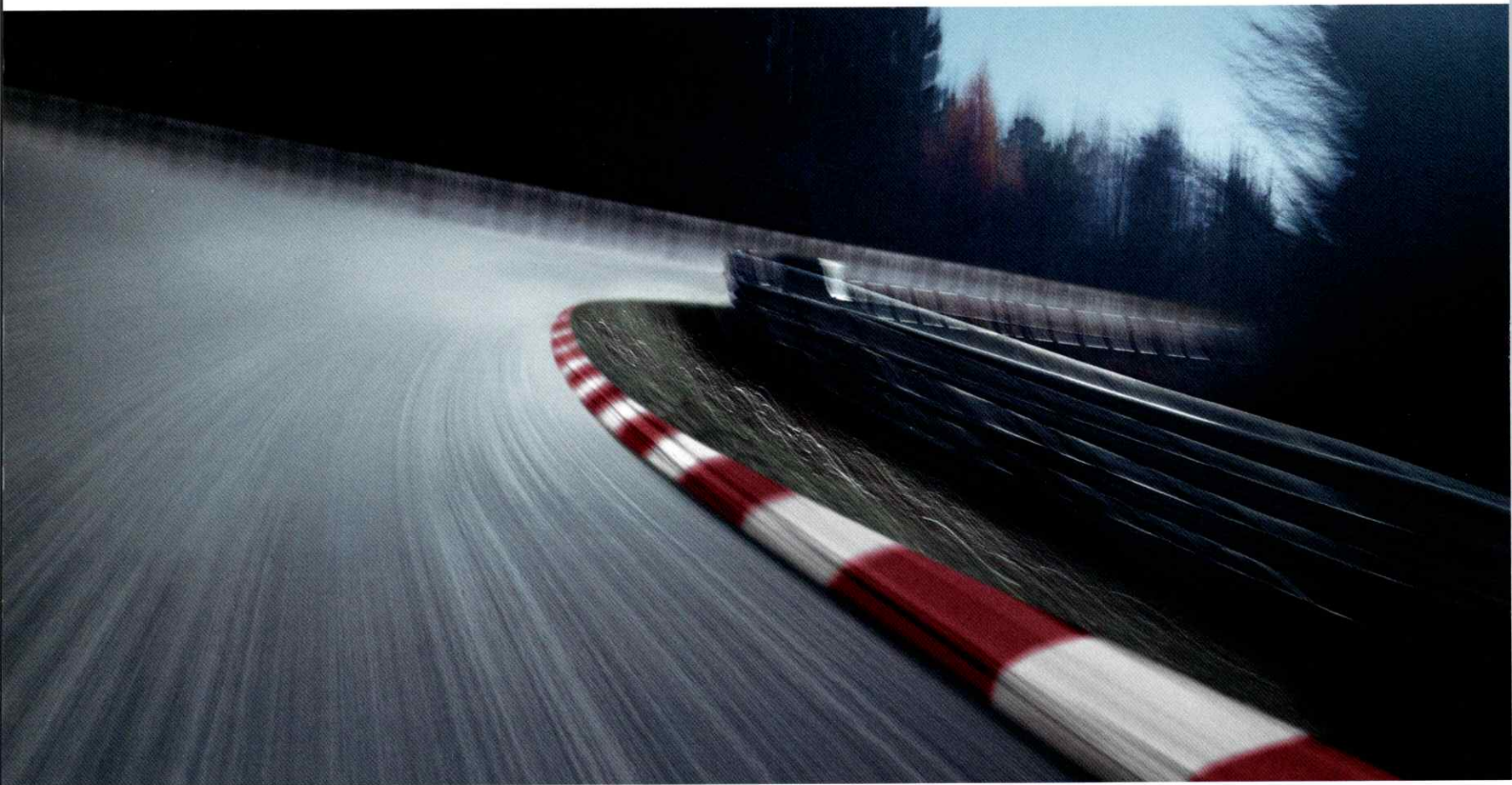
Full Line Brochure

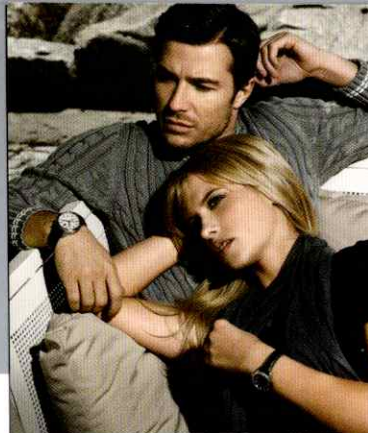
Fall 2009



The Ultimate
Driving Experience.®

The Ultimate Driving Experience





BMW Canada

bmwshop.ca



The Ultimate Driving Experience®

Life in Motion

Enjoy the BMW Lifestyle Collection, now at your fingertips. Experience everything from dynamic bikes to stylish his-and-hers apparel and accessories.

Shop online at

www.bmwshop.ca

and receive **15% off** your total purchase.*

Enter Promo Code: BMWAutoshow2873 in the check-out area.

For nine decades, creating the world's finest, most innovative engines has been BMW's obsession. It began in 1916, when our first airplane engines set altitude records. In fact, the image of a spinning propeller against the blue Bavarian sky would become the inspiration for our now-famous blue-and-white logo. In 1923, BMW began manufacturing motorcycles that set world records of their own. Of course, it wasn't until BMW turned its passion and innovation to the world of automobiles in 1929 that it would take its largest steps down the path of glory.

Now, with each vehicle launch, whether an exciting new cabriolet, a Sport Activity Vehicle (SAV), or an innovative redesign of one of our classic sport sedans, our focus never wavers from the drive. Every BMW is designed to connect its driver to the road in a way that's beyond compare. With powerful yet efficient engines, exceptional chassis balance, and an uncanny feel for the road, every single BMW lives up to the promise of The Ultimate Driving Experience.

For vehicle specifications and side-by-side comparisons, see page 54. For more information, visit www.bmw.ca. You can configure a BMW online, explore leasing and financing options, and request a test drive. For model-specific brochures, please ask your local BMW Retailer.

Contents	1 Series Coupé & Cabriolet 2	3 Series Sedan & Touring 4	3 Series Coupé & Cabriolet 6	5 Series Sedan & Touring 8	5 Series Gran Turismo 10
	6 Series Coupé & Cabriolet 12	7 Series Sedan 14	X3 16	X5 18	X6 20
	Z4 22	M3 Sedan, Coupé & Cabriolet 24	M5 Sedan 26	M6 Coupé & Cabriolet 28	
	X5 M 30	X6 M 32	BMW Individual 34	BMW Accessories 36	BMW Lifestyle 37
	BMW EfficientDynamics 38	Innovative Technologies 40	Active and Passive Safety 42		
	BMW Run-Flat Safety Tires 44	BMW Driver Training 45	BMW Assist 46	xDrive All-Wheel Drive 48	BMW Certified Series 50
	BMW Service and Warranty 51				
	BMW Financial Services 52	Vehicle Specifications 54	BMW Retailer Listing 60		

1 Series

128i | 135i Coupé
128i | 135i Cabriolet





“...The BMW 135i Coupé is the best car BMW makes...” Jeremy Clarkson, *Toronto Star*, February 2008

1

1 Series Coupé In 1966, the world was introduced to the BMW 2002. More than four decades later, BMW is bringing the spirit of this legendary vehicle into the new millennium with the BMW 1 Series Coupé. With its compact dimensions, seating for four, agile handling, and rear-wheel drive, the BMW 1 Series Coupé delivers pure driving pleasure in a condensed package.

The design of the BMW 1 Series combines a powerful and muscular body with a short front overhang, striking shoulderline, long engine compartment, and long wheelbase.

The BMW 128i features a 3.0-litre in-line six-cylinder engine, which produces 230hp with 200 lb-ft of torque at 2,750 rpm. Through the use of BMW EfficientDynamics, innovations such as Valvetronic® technology, and magnesium/aluminum engine construction, the BMW 128i Coupé delivers a 0 to 100 km/h time of 6.4 seconds.

Equipped with the two-time International Engine of the Year – a Twin Turbo 3.0-litre in-line six-cylinder that generates 300hp and 300 lb-ft of torque – the BMW 135i vaults from 0 to 100 km/h in a mere 5.4 seconds. The formula for performance is further enhanced on the 135i Coupé through standard 18" wheels, sport suspension, M Aerodynamics kit, and a high-performance brake system.

With its unique combination of design, technology, and performance, the BMW 1 Series is undoubtedly a legend in the making.

1 Series Cabriolet Bring open-air experience to the open road with the BMW 1 Series Cabriolet. Along with its signature BMW styling cues, this Cabriolet features an elegant shoulderline that stretches from its low-slung rear to its front end, creating a sporty, compact appearance.

The integrated rollover bar provides enhanced safety, while the through-loading system allows for greater storage capacity. The revolutionary roof opens with the touch of a button, even at speeds of up to 40 km/h, allowing it to adapt to the changing weather.

The BMW 128i Cabriolet and 135i Cabriolet share the same magnificent engines as their 1 Series Coupé counterparts. The available Boston Leather features SunReflective Technology, a unique coating that reduces seat surface temperature by up to 20°C. That, combined with standard Automatic Climate Control, ensures optimum comfort in all conditions.

Whether top up or down, the BMW 1 Series Cabriolet delivers an exhilarating driving experience with its unrivalled combination of driving dynamics, performance, and luxury.

3 Series

323i | 328i | 335i | 335d | 328i xDrive | 335i xDrive Sedan
328i xDrive Touring





“ This is THE car that all manufacturers benchmark when they set out to create the ultimate 'sport sedan.' ”

Adam Allen, carpages.ca, January 2009

3

3 Series Sedan Reasserting its position as the benchmark sport sedan, the BMW 3 Series Sedan blends progressive technology, superior performance capabilities, and luxurious amenities to amaze driving enthusiasts. From the front apron, featuring more aggressive air inlets and revised headlamps, to the rear taillights employing LED technology, this is one vehicle that refuses to be ignored.

Building on an already impressive 30-year legacy are two ultra-smooth in-line six-cylinder engines. An available Twin Turbo variant with High Precision Injection effectively combines an available 300hp with exceptional fuel efficiency. Plus, the 265hp Twin Turbo Advanced Diesel with BluePerformance, which was twice named International Engine of the Year. Complete control over these powerplants comes via finely tuned suspensions, optional Active Steering, and innovative brake and stability systems. For those who desire even more racing spirit comes the M Sport Package. Available in the BMW 328i and BMW 335i models, it includes sportier features, like a more aerodynamic front aesthetic, M Sport Suspension, sport seats, and iconic M Leather steering wheel.

Exterior design cues include two bold character lines chiselled in the hood, a visually lowered and widened front end, and streamlined trunk contours, which all harmonize to create a more dynamic silhouette. Interior refinements include chromed controls and a spacious central console that allows for storage of external audio devices.

Also available as part of an optional Navigation Package is the next-generation iDrive®. It's the most intuitive yet, and is now supplemented with convenient function buttons.

With everything the 3 Series Sedan boasts, not only does it refuse to be ignored, it refuses to be outdone.

3 Series Touring Brilliantly engineered, agile, stylish, and versatile. With a 230hp engine, standard xDrive® All-Wheel Drive, and six airbags, the BMW 3 Series Touring offers the exceptional safety and razor-sharp performance of the Sedan – with a few extra advantages.

Inside, the spacious flat-floor cargo area allows for various configurations and offers up to 1,385 litres of storage capacity. Naturally, this vehicle abounds with rational design and thoughtful details, like the split-folding rear seats and low loading height that works in tandem with a high-lift tailgate featuring a rear window that can be opened separately.

Outside, between the standard roof rails, is an available dual-panel Panorama Sunroof which, when open, creates a sensory experience reminiscent of a cabriolet. Form and function, passion and practicality: the BMW 3 Series Touring offers the best combination, without any compromises.

3 Series

328i | 335i | 328i xDrive | 335i xDrive Coupé
328i | 335i Cabriolet





“The 3 Series is undeniably one of the most beautiful coupés on the market.” *Petrina Gentile, Globe and Mail, April 2008*

3

3 Series Coupé The character of any coupé is reflected in its profile. On the BMW 3 Series Coupé, the elongated hood and short overhangs, as well as the low, sleek roofline, all contribute to its stunning silhouette.

Naturally, in a BMW, form is never without function. Sculpted body panels adhere to BMW's intelligent lightweight design philosophy, and Xenon Adaptive Headlights are accented by distinctive corona rings, which also serve as daytime running lights.

But innovation does not end with design. A 230hp 3.0-litre in-line six-cylinder engine with Valvetronic® powers both the 328i and 328i xDrive models. By combining xDrive All-Wheel Drive with the dynamic handling and agility characteristics inherent in the 3 Series, the 328i xDrive offers exceptional traction, stability, and safety.

Adding even more power and performance are the 300hp Twin Turbo BMW 335i and its xDrive All-Wheel Drive counterpart, the 335i xDrive. The result is 0 to 100 km/h in an astonishing 5.5 seconds for the 335i xDrive and 5.6 seconds for the 335i. Also available is the M Sport Package, which includes a sleek M Aerodynamics Package, M Sport Suspension, sport seats, and M Leather steering wheel.

Building on over 60 years of coupé experience, the BMW 3 Series Coupé offers drivers a rare combination of classic styling and modern automotive technology.

3 Series Cabriolet The BMW 3 Series Cabriolet offers open-air driving enthusiasts much to celebrate. Its elongated profile, low shoulderline, and distinctively flat rear demonstrate how perfectly the BMW 3 Series Cabriolet has built on the successes of its proven predecessors.

The most obvious evolutionary enhancement is the three-part hard top that opens and closes in a mere 23 seconds at the touch of a button. With improved heat insulation and superior acoustics, this lightweight steel panel roof is perfect for any season.

To ensure optimal driver and passenger comfort, the available Dakota Leather comes with SunReflective technology, a unique coating that reduces seat surface temperature by up to 20°C. Further enhancing comfort are high-quality materials that create a stylish and sophisticated ambience.

Under the hood of the BMW 328i Cabriolet is a remarkable 3.0-litre, 230hp in-line six-cylinder engine with Valvetronic technology, capable of 0 to 100 km/h in just 7.2 seconds. The Twin Turbo 335i Cabriolet is equipped with a powerful 3.0-litre 300hp in-line six-cylinder engine with High Precision Injection, launching this Cabriolet from 0 to 100 km/h in a mere 5.8 seconds. Enhancing the 3 Series Cabriolet's racing edge is an available M Sport Package that includes hallmark M features like an M Aerodynamics Package, M Sports Suspension, sport seats, and M Leather steering wheel.

Top up or down, this Cabriolet boasts superior driving dynamics for the ultimate in design, luxury, and performance.

5 Series

528i | 550i | 528i xDrive | 535i xDrive Sedan
535i xDrive Touring





“As one of the finest automobiles on the planet, the BMW 5 Series is extremely hard to root against... This car has absolutely everything covered, from fit and finish to driving excitement.” Daniel Lafrance, *auto123.com*, May 2008

5

5 Series Sedan The BMW 5 Series Sedan has always represented a perfectly calibrated blend of performance and luxury. With this vehicle, there is even more evidence of BMW's relentless pursuit of innovation.

A 230hp 3.0-litre in-line six-cylinder engine with Valvetronic powers the 528i and 528i xDrive, while an impressive 360hp 4.8-litre V8 engine with Valvetronic powers the 550i. The 535i xDrive model features a turbocharged version of the in-line six-cylinder engine with High Precision Injection and offers up to 300hp. Each fuel-efficient model comes with a standard 6-speed automatic transmission. For an even more dynamic drive, the 550i comes equipped with a Sport Automatic Transmission.

The 2010 BMW 5 Series Sedan becomes even more desirable as one of two inspiring Editions. These extraordinary Editions feature an impressive selection of amenities to embody the perfect blend of luxury and performance.

The BMW 5 Series Executive Edition has been designed with indulgence in mind, offering the smart convenience of Comfort Access to add a new level of ease to your experience.* USB Audio Integration and the dynamic BMW Individual Audio System with Dirac Live™ deliver seamless technology that enhances the way you experience music.

Also available: the BMW 5 Series M Sport Edition, created with the performance enthusiast in mind.* M Double Spoke Alloy wheels add character, while the M Aerodynamics Package projects style. Inside, the intuitive M Multi-function sport

steering wheel intensifies your Ultimate Driving Experience. These are just some of the features you'll enjoy with the M Sport Edition.

Simply put, the BMW 5 Series Sedan represents the culmination of decades of automotive engineering leadership, and will remain the standard by which all other sport sedans are measured.

5 Series Touring The BMW 535i xDrive Touring is as sleek and graceful as it is safe and versatile. With an impressive 3.0-litre 300hp in-line six-cylinder engine with twin turbochargers and High Precision Injection, and xDrive All-Wheel Drive, this vehicle undoubtedly performs like a true BMW.

Contributing to its agile handling characteristics are an aluminum suspension, aluminum integral rear axle, aluminum front end, and near-perfect 50:50 weight distribution.

From a safety perspective, the 535i xDrive Touring features BMW's Advanced Head Protection System, side thorax airbags for the driver and front passenger, and Dynamic Stability Control (DSC), as well as Adaptive Headlights and Adaptive Brakelights.

The already compelling 535i xDrive Touring has also been given the Executive treatment with an edition that offers sophisticated upgrades like a new Navigation System, BMW Individual Audio System with Dirac Live™, and the sumptuous appeal of Comfort Seats.*

Town or country, business or pleasure, performance or practicality, the 535i xDrive Touring offers discerning drivers the very best of all worlds.

* Components of BMW 5 Series Executive and M Sport Editions vary between models. Consult your preferred BMW Retailer for full details.

5 Series Gran Turismo

550i Gran Turismo





“The Gran Turismo projects an air of elegance wrapped in a package that looks solid and fast.”
 John Turley-Ewart, National Post, June 2009

5

5 Series Gran Turismo BMW Canada is pleased to introduce the new 5 Series Gran Turismo, a vehicle that defines its segment by masterfully melding the characteristics of an elegant sedan, contemporary SAV, and classic Gran Turismo in a completely unique expression of automotive ingenuity.

In 1950, the term “Gran Turismo” was first coined to describe vehicles that captured the performance, handling, and style of a two-seat sports car within a refined and spacious sedan. Today, BMW has evolved that tradition into a contemporary vehicle that harmoniously blends style, exceptional space, and comfort for five with legendary BMW performance.

Open any of the BMW 5 Series Gran Turismo’s four doors and discover the first frameless windows ever featured on a BMW sedan. Slip into the exquisite leather Comfort Seats and experience a remarkably airy and bright cockpit, courtesy of large window areas and stunning panoramic glass sunroof. An extraordinary consideration for detail continues throughout the cabin, with elegant ambient lighting, elevated seat positions, and available comfort seating for four.

The luxurious ambience of the new 5 Series Gran Turismo is seamlessly paired with an incredible level of versatility. Ample storage compartments discreetly positioned

throughout the cabin, combined with split-folding rear seats, turn an already expansive trunk into a full cargo area.

Outside, the new BMW 5 Series Gran Turismo’s coupé-like design is perfectly finished with a unique two-piece tailgate. The traditional sedan-oriented trunk opening allows for quick access, while a partition separates and protects passengers from the elements. To accommodate larger items, the tailgate expands into the full opening trunk typically seen on Sport Activity models.

Efficiently powered by a 400hp, Twin Turbo 4.4-litre V8 engine, the new BMW 550i Gran Turismo boasts 450 lb-ft torque and a resulting sprint from 0 to 100 km/h in 5.7 seconds. Advanced technologies like the newest generation iDrive, Dynamic Driving Control, and the precise steering provided by Servotronic enhance comfort and performance. Innovative options like Active Blindspot Detection and Active Cruise Control with Stop-and-Go, combined with the standard six airbags located throughout the cabin, make the new BMW 5 Series Gran Turismo as safe as it is sophisticated.

Simply put, an unprecedented union of luxury, power, and versatility make the new BMW 5 Series Gran Turismo a vehicle without equal.

6 Series

650i Coupé
650i Cabriolet





Finally, a car that appreciates how hard you work and consequently does its best to make your life easier in all ways possible.

Jeremy Freed, sharpformen.com, June 2008

6

6 Series Coupé Evoking the character of the legendary sports car, the BMW 650i Coupé continues an exciting era for BMW's luxury performance coupé.

Offering well-appointed 2+2 accommodation in a closed-body format, the 650i Coupé is powered by a 360hp 4.8-litre V8 engine with Valvetronic, capable of 0 to 100 km/h in a mere 5.5 seconds. Engage Dynamic Driving Control with the Sport button and engine response to the accelerator is even quicker. Controlling all that power is a smooth and optimally synchronized 6-speed manual, while a new 6-speed Sport Automatic Transmission with steering wheel-mounted shift paddles is also available.

Handling is reactive, precise, and stable, thanks in part to optional Active Steering. Further contributing to the feel of this vehicle is Dynamic Drive. This remarkable system monitors lateral acceleration and instantly activates Active Anti-Roll Bars to provide uncanny composure on twisty roads. Ensuring the driver's composure are the electromechanically operated Adaptive Headlights and the optional Head-Up Display. Striking the perfect balance between sportiness and elegance, the 650i Coupé drives passion and pleasure through personality, precision, and performance.

6 Series Cabriolet The BMW 650i Cabriolet is one of the most exciting high-performance, open-bodied luxury automobiles ever built.

Complementing the exotic refined exterior design, the fully automatic power softtop is at once a work of art and an engineering masterpiece. A vertically retractable glass rear window can be raised and lowered independently, while doubling as a wind deflector when the top is down. When the top is up, graceful "fins" improve aerodynamics, eliminate vibrations, and reduce wind noise.

Top up or down, superior occupant protection is afforded by an array of safety features, including a reinforced windshield frame and the Rollover Protection System. Add front and side-impact airbags and the Cabriolet has, in effect, its own safety cage.

Its luxurious appointments are no less impressive. From SunReflective Technology keeping the leather seats cool to the Navigation System and optional Enhanced Premium Sound System with Dirac Live™ technology, the 650i Cabriolet is an extraordinary blend of raw power and seductive sophistication.

7 Series

750i | 750Li | 760Li | 750i xDrive | 750Li xDrive Sedan





“...a day driving the BMW's new long-wheelbase 750Li on winding two-lanes and unfettered autobahn unearthed a car that's rich in both new ideas and driving capabilities.” **John Leblanc, Toronto Star, October 2008**

7

7 Series Sedan Setting a new standard of dynamic styling and superior performance, the new 7 Series has arrived to dominate the upper echelons of premium automotive excellence.

The cockpit and cabin are designed around the philosophy of clear, functional arrangement, giving both passenger and driver intuitive navigation and mastery over the advanced amenities and functions. Everything from precise climate control to stylish ergonomic design ensures absolute comfort, with luxurious ambience. Perfectly finished with premium materials, the generous yet refined interior communicates a passion for taste and an unparalleled devotion to details.

As expected, technological advancements abound. Making its debut, the newly developed Active Blindspot Detection warns the driver of unseen dangers via a blinking side-mirror LED. Another optional safety innovation is BMW Night Vision, now capable of recognizing individual pedestrians near or on the roadway. The crowning achievement is the second generation of iDrive, perfected by simplified controls, expanded menu options, and a high-resolution screen.

Harmony of form and function is what defines BMW's dynamic presence, exemplified by the new flagship BMW 760Li. Its elegantly elongated profile is a captivating union

of sweeping lines and contours, while the wide aggressive stance provides the unique balance necessary to achieve optimum performance. The BMW 760Li offers a robust 6.0-litre V12 Twin Turbo engine with 535hp and 550 lb-ft of torque to accelerate from 0 to 100 km/h in an unbelievable 4.5 seconds.

The BMW 750i and 750Li offer the exclusive qualities of a supreme-class vehicle, with the sporting performance of a 4.4-litre Twin Turbo V8 engine with High Precision Injection that delivers outstanding power and remarkable fuel efficiency. Both models are perfected by the new addition of xDrive All-Wheel Drive, a revolutionary system that maintains the best possible traction at all times. xDrive not only enhances agility, it provides peace of mind as the ideal accompaniment to the 7 Series' luxuriously comfortable atmosphere and motoring refinements.

The crescendo of handling is achieved courtesy of a double-wishbone aluminum suspension system. It is the first of its kind to be featured in a non-Formula 1 BMW vehicle and ensures smooth riding comfort with reduced weight. The entire system is complemented by standard Dynamic Driving Control and Dynamic Damping Control. This allows the driver to select from four tailored driving programs that range from the absolute tranquility of Comfort mode to the ultimate responsiveness of Sport-Plus.

X3

X3 xDrive28i | X3 xDrive30i SAV





The X3 proved to be everything you'd expect from BMW.

Peter Bleakney, *Toronto Star*, October 2006

X3

X3 The BMW X3 delivers the superior handling dynamics you would expect from a BMW Sedan, along with the exceptional versatility and vast cargo space of a Sport Activity Vehicle (SAV). From a design perspective, the BMW X3 features stylized front bumpers and a larger kidney grille, as well as standard foglights, and an optional Executive Edition package.

The BMW X3 is powered by two distinct engines: the X3 xDrive30i possesses a 260hp 3.0-litre in-line six-cylinder engine, while the new BMW X3 xDrive28i features a 3.0-litre six-cylinder engine with 215hp and 185 lb-ft of torque. The BMW X3 engines come equipped with Valvetronic technology, which is designed to deliver both increased performance and fuel efficiency.

The X3 comes with a standard 6-speed automatic transmission with Steptronic. When it comes to handling, xDrive All-Wheel Drive, near-perfect 50:50 weight distribution,

and Dynamic Stability Control (DSC) all contribute to crisp cornering and control characteristics. The X3 is also equipped with Dynamic Traction Control, enabling maximum propulsion and a sportier driving style. What's more, with incredible agility, a higher seating position, and Park Distance Control (PDC), the driver is easily able to steer the X3 into the smallest of spaces.

Utility or activity, the BMW X3 offers room for five, and lavish interior upgrades like Nevada Leather, as well as practical storage trays, numerous compartments, and a large versatile cargo area. Better still, with the flexibility of split-folding rear seats, the X3 can easily accommodate everything you need for your next journey.

With exceptional performance capabilities, a refined interior, and premium amenities, it is easy to see why the BMW X3 appeals to both performance and luxury SAV enthusiasts.

X5

X5 xDrive30i | X5 xDrive35d | X5 xDrive48i SAV





“ BMW has managed to infuse the spirit of a sports car into the body of a practical family hauler, resulting in a vehicle that truly offers the best of both worlds. ” Jack Kazmierski, Edmonton Sun, June 2008

X5

X5 From the sporty and elegant exterior design and powerful, fuel-efficient engines to the more spacious and refined interior, the BMW X5 represents the perfect blend of luxury, power, and versatility.

The X5 xDrive30i is equipped with a light and powerful in-line six-cylinder engine with Valvetronic that generates 260hp and is capable of 0 to 100 km/h in 6.8 seconds. But as one would expect from BMW engineers, it's smoother and more fuel-efficient than its predecessor. Equipped with a 350hp V8 engine with Valvetronic, the X5 xDrive48i is capable of 0 to 100 km/h in 6.9 seconds. Both models come with a standard shift-by-wire, 6-speed automatic transmission with Steptronic that is controlled by an electronic gear selector for smoother, faster, and more efficient shifting.

Adding a sleek racing side to the X5 is an available M Sport Package that includes a unique Carbon Black metallic exterior colour, an exclusive selection of M wheel styles, Sport Suspension, and M Leather steering wheel.

For the first time in a BMW, the X5 offers room for seven with available 3rd Row Seats, as well as more cargo space and interior flexibility. The interior is also equipped with

a wealth of premium standard features, including iDrive, BMW Assist with Bluetooth technology and Stolen Vehicle Recovery, and a 12-speaker HiFi Sound System with two subwoofers. Other available features include a Rear DVD Entertainment System, Head-Up Display, a Rear-view Camera, and a Panorama Sunroof.

In addition to BMW's xDrive All-Wheel Drive and Dynamic Stability Control (DSC), the BMW X5 offers an available Dynamic Handling Package, which includes Active Steering and Adaptive Drive to ensure superior control, ride comfort, and agility. Innovative technology, a luxurious ambience, sporty design, and superb driving dynamics place the BMW X5 in a class by itself.

The next stage of our EfficientDynamics program comes to life with the high-performance diesel BMW X5 xDrive35d. Its Advanced Diesel engine with BluePerformance delivers sports-car-like acceleration and handling while at the same time emitting less CO₂ than traditional diesel engines.

X6

X6 xDrive35i | X6 xDrive50i Sport Activity Coupé





With a vehicle like this, it's best to let its performance do the talking.

Daniel Barron, autonet.ca, June 2008

X6

X6 The BMW X6 Sport Activity Coupé combines the charisma of a coupé with the authority and versatility of a Sports Activity Vehicle. The ground-breaking BMW X6 xDrive50i is equipped with a high-performance Twin Turbo V8 engine, while the BMW X6 xDrive35i features a powerful and efficient six-cylinder engine. Both models handle the toughest corners with ease, while keeping their passengers shrouded in comfort.

The strikingly athletic appearance of the BMW X6 can be attributed to its coupé lines, formed front end, and powerfully modelled side contours. The interior carries that feel as well, in the form of a multi-function leather sport steering wheel, 6-speed automatic transmission with Steptronic and gearshift paddles, and kneepads to allow your legs better lateral grip in corners.

Complementing the intelligent xDrive All-Wheel Drive system is Dynamic Performance Control, premiering in the BMW X6. This BMW innovation noticeably boosts agility and facilitates greater control when taking corners by distributing drive force seamlessly along the rear axle, between the left and right wheels. With Dynamic Performance Control, the new BMW X6 reacts quickly and accurately to steering input, for unmatched driving control on any surface.

In addition to its outstanding power and handling, the BMW X6 contains a large amount of cargo space, as well as luxury options, including 4-zone Automatic Climate Control and Head-Up Display, all together delivering a driving experience that is simply unmatched.

Z4

Z4 sDrive30i | Z4 sDrive35i Roadster





“...this is BMW back at its best, with a beautifully sculpted roadster powered by a scintillating engine all wrapped up in a well-engineered package.” **David Booth, National Post, April 2009**

Z4

Z4 Roadster This classically influenced roadster has been meticulously recrafted for a stylish and modern look. Sweeping graceful lines and a dynamic shoulderline accentuate the athletic profile and combine to give the BMW Z4 Roadster a silky, sleek appearance that seems to flow through every twist and turn.

With the push of a button, the BMW Z4 transforms from coupé to cabriolet in only 20 seconds, thanks to the first fully retractable hard top in BMW roadster history. This gives the driver the best of both worlds: the comfort of a covered cabin and the freedom of wind and open sky.

Inside, discover premium materials and a contemporary finish that communicates sophisticated ambience with stirring appeal. Setting the standard in the premium roadster segment, the BMW Z4 offers a generous cargo compartment and a convenient storage shelf behind the seats. Outside, you'll find an aggressively elongated front end, spacious low-lying rear, LED taillight technology, and two

striking contour lines that run from the BMW roundel to the rear of the vehicle, giving the BMW Z4 its dynamic elegance.

The legendary handling and styling in the Z4 would be nothing without the riveting engines that pay homage to BMW's storied roadster legacy. The BMW Z4 sDrive30i is equipped with a naturally aspirated 255hp in-line six-cylinder engine. Inside the BMW Z4 sDrive35i lies the award-winning 300hp Twin Turbo engine, capable of accelerating this vehicle from 0 to 100 km/h in 5.3 seconds.

Created to satisfy the desire for pure driving joy, the BMW Z4 features near-perfect 50:50 weight distribution, lightweight suspension, and Dynamic Driving Control, which allows you to customize your drive, from luxuriously smooth to pure sport handling, at the touch of a button.

Combining sophistication, luxury, and remarkable performance, the BMW Z4 Roadster is both an inspired vision and an expression of joy.

M3

M3 Sedan

M3 Coupé

M3 Cabriolet





“ I know this sounds over the top, but the car is an engineering masterpiece. ”
Derek McNaughton, driving.ca, October 2008

M

M3 Sedan The incredible performance capabilities of the BMW M3 begin with the 4.0-litre V8 engine, which produces 414hp and 295 lb-ft of torque at 3,900 rpm and redlines at 8,400 rpm, for a remarkable 0 to 100 km/h time of 4.9 seconds. Double-VANOS variable camshaft control delivers optimum power throughout the rev range, while individual throttle butterflies and a unique engine management system are used to ensure rapid response to driver inputs, translating every touch of the pedal into instant acceleration.

Available on all BMW M3 models is the optional 7-speed M Double Clutch Transmission with Drivelogic, a first for any car in this class. This technology results in an uninterrupted flow of power to the wheels, reducing fuel consumption and shaving 0.2 seconds off the 0 to 100 km/h time when compared with the manual transmission.

With the muscular front end, large air vents, prominent powerdome, and four chromed tailpipes, the BMW M3 Sedan promises an exhilarating drive combined with four-door practicality.

M3 Coupé Arguably the most renowned of all M cars, the BMW M3 made its debut in 1986 and, in its racing configuration, won multiple European Touring Car championships. The M3 Coupé shares the same remarkable engine as its Sedan counterpart but features a slightly more incredible 0 to 100 km/h time of 4.8 seconds.

A carbon-fibre-reinforced roof lowers the vehicle's centre of gravity, while the prominent powerdome houses the new V8 engine. Approximately 80% of parts are unique to the new M3 Coupé, compared with its 3 Series Coupé counterparts – a true reflection of its M DNA.

Remarkable power, dynamic handling, and short braking distances deliver a drive that is every bit as exhilarating as the M3 Coupé's styling.

M3 Cabriolet The BMW M3 Cabriolet boasts the same exciting drivetrain technology as other M3 models, while also offering an open-air experience. The lightweight roof opens at the push of a button, and tucks into the luggage compartment in a brisk 22 seconds.

The interior of the BMW M3 Cabriolet embodies its racing heritage with its ergonomic comfort and design. A leather-trimmed M Multi-function steering wheel with stitching in M colours, as well as exclusive M trims and upholsteries, reflect the exclusivity and sporting pedigree that can only be crafted at BMW M.

With performance that pushes the boundaries of physics and its exhilarating styling, top up or down, the BMW M3 Cabriolet connects road to sky unlike any other vehicle.

M5

M5 Sedan





“ This is a car that builds confidence like few others...it works with you in an eerie, almost telepathic way.”

Justin Couture, carpages.ca, January 2008

M

M5 Sedan The BMW M5 embodies unique features, technology, and design enhancements that enable the driver to make a choice as to how the vehicle should perform – like a sports car or a luxury sedan.

With extended Merino Leather, heated front seats, and room for five, the M5's ability to carry out the stately duties of the luxury sedan is obvious. Standard M Sport seats with adjustable thigh support offer the first clue that the M5 would be equally impressive on the track. The second would be the optional F1-inspired 7-speed Sequential Manual Gearbox (SMG®) with Drivelogic. Third would be the 5.0-litre, 40-valve V10 high-revving engine, producing 500hp at 7,750 rpm and an acceleration time from 0 to 100 km/h in 4.7 seconds.

Controlling that M power are immensely powerful, fade-resistant compound cross-drilled brakes which, along with the standard Anti-lock Brake System (ABS), are an integral part of the specially calibrated variable Dynamic Stability Control (DSC) system. Pressing the DSC button once engages M Dynamic Mode, granting the more adventurous driver the ability to push the car to the razor's edge of control, allowing some oversteer, while MDrive, configured via iDrive, allows the driver to change the settings on the car to suit various driving styles.

At first glance, few will recognize the M5's performance potential. The M enthusiast, on the other hand, will see the subtle badges, four tailpipes, and exclusive M Gills incorporated into the front fenders that reveal its racing lineage.

M6

M6 Coupé

M6 Cabriolet





“ ...The M6 is at the front of the pack.” David Booth, *National Post*, October 2007

M

M6 Coupé As every automotive enthusiast knows, a vehicle's power-to-weight ratio is one of the most important factors in driving dynamics. With an excellent superstructure already established in the BMW 6 Series, the goal for the new M6 2+2 Coupé was to increase power and shed weight in the pursuit of supreme performance, without sacrificing class-leading comfort and luxury.

The engineers at BMW M started by giving the M6 a roof made of carbon-fibre composite, like the high-strength, ultra-lightweight material used extensively in Formula 1 cars. With weight cut from the top, the M6's centre of gravity was lowered, reducing body roll and allowing for greater handling, agility, and speed.

An all-aluminum chassis and suspension, aluminum doors and hood, and a weight-reduced front section produce optimum weight distribution. This intelligent lightweight construction makes the M6 incredibly lean. With an award-winning 40-valve 500hp V10 engine, the M6's power-to-weight ratio delivers breathtaking performance. The proof: 0 to 100 km/h in 4.6 seconds. Further contributing to the M6's mastery of control is an optional 7-speed Sequential M Gearbox (SMG) with Drivelogic, which enables a smooth and consistent surge of power from standstill to top speed.

A charismatic leader in the luxury performance category, the M6's high-revving engine and signature exhaust notes emanating from dual twin exhaust pipes combine to create the adrenaline-pumping soundtrack to this Ultimate Driving Experience.

M6 Cabriolet The M6 Cabriolet combines the incredible performance capabilities of the M6 Coupé with the elegance of the BMW 6 Series Cabriolet. Of particular note is the fully automatic softtop with its distinctive fins. It offers a retractable rear glass window, which provides ventilation when the roof is up and serves as a wind deflector when the top is down.

Inside, the ergonomic cockpit has been enhanced with special touches that distinguish it as an exclusive vehicle from BMW M. Immediately apparent are the exclusive seams on the seats, M Logos in the headrests, and optional shift paddles and a shift lever that are unique to the Sequential M Gearbox. The white-on-black instruments with traditional BMW M red indicator needles further complement the ambience of the interior. Befitting the Cabriolet's exclusive nature, the list of standard features includes luxurious Merino Leather upholstery, door inserts and armrests, Xenon Adaptive Headlights, and an 11-speaker LOGIC7 Sound System.

But the real music comes from BMW's award-winning, high-revving 500hp V10 M Engine. Capable of 0 to 100 km/h in 4.8 seconds and redlining at 8,000 rpm, the M6 Cabriolet is a rare blend of charismatic beauty and awesome power. Equipped with either a 6-speed manual or an optional 7-speed SMG Drivelogic transmission, it is designed to provide the open-air enthusiast with a driving experience like none other.

X5 M

X5 M





“ Dynamic Performance Control [...] Combined with M-specific suspension [...] gives the BMW a clear-cut road-holding advantage over other sporty SUVs. ” **John LeBlanc, Toronto Star, July 2009**

M

X5 M The coveted badge that has revolutionized segments conquers yet another. BMW Canada is proud to introduce the BMW X5 M, the world's most powerful Sport Activity Vehicle.

At first glance, the new BMW X5 M looks as dynamic at standstill as it does at high speeds. The low, sporty stance is courtesy of aerodynamic flaps adapted from Motorsport that run along the lower edge of the external air intakes. Its deeply sculpted front end flows elegantly into the aggressive front apron that exudes an imposing presence, but not without a deeper purpose. Three large air intakes and the black kidney grille enable optimal cooling of the engine and brake system, guaranteeing optimum performance even under the most demanding driving conditions. Breathtaking M design features include 20" M Alloy wheels, signature M double-twin tailpipes, M Side gills, M Side mirrors, and exclusive M paint choices such as Carbon Black Metallic.

Underneath the hood lurks a 4.4-litre V8 M TwinPower Turbo engine with High Precision Injection. An outstanding benchmark achievement in engineering that delivers 555hp and 500 lb-ft of torque from as low as 1,500 rpm, capable of accelerating the BMW X5 M from 0 to 100 km/h in a mere 4.7 seconds.

Every M model possesses incredible stability and agility, and with specifically M-tuned components, the same can be said for the new BMW X5 M. A new M-specific xDrive system, in combination with Dynamic Performance Control, ensures the greatest traction possible, with a rear-drive bias that enables optimal division of torque between the rear wheels. This provides increased directional stability and agility, particularly when cornering, braking suddenly, and accelerating.

The interior of the new BMW X5 M combines unparalleled functionality with a luxurious atmosphere. A standard Panorama Sunroof floods the spacious cabin with light, enhancing the naturally fine graining of the Merino Leather upholstery. The M Sport seats, M Sport steering wheel, M Sport Automatic Transmission, and kneepads give the driver the distinct impression of commanding a true Motorsport vehicle. Even within a cabin focused on comfort and premium materials, practicality has not been neglected. The BMW X5 M comfortably seats five, while fold-down rear seats extend loading capacity to stow away even the most cumbersome items with ease.

A veritable defining statement on asphalt, the new BMW X5 M is the perfect splice of racing genes with those of luxury, power, and functionality.

X6 M

X6 M





“...The X6 M is a blend of coupé and SUV that has inherited the spirit of a sports car.”
 Bertrand Godin, *auto123.com*, July 2009

M

X6 M The new BMW X6 M has effortlessly overturned conventional thinking on what a Sport Activity Coupé can achieve. Innovative design and technologies infuse pure Motorsport performance throughout its form, from racing exterior to seductively crafted interior to the very heart of its power source.

On the outside, the new BMW X6 M's dynamic wedge shape, flared wheel arches, sloping roofline, and steeply raked front windscreen create a look that is all at once powerful, athletic, and elegant. However, what makes the new X6 M immediately recognizable as a member of the M family are signature characteristics like M Side gills, double-twin chrome tailpipes, large air intakes, and 20" M Alloy wheels. Exclusive paint colours such as Melbourne Red Metallic, with side gills and bumpers in full body colour, embody the spirit of M, emphasizing the new BMW X6 M's road-focused driving capabilities.

All components relevant to driving dynamics have been M-tuned. Together with Dynamic Performance Control, the new M-specific xDrive system offers incredible control and flexible delivery of power with a sporty driving style. One of the most astonishing characteristics of the M-specific xDrive system, in combination with Dynamic Performance Control, is a rear-drive bias that, depending on the driving

situation, divides torque between the rear wheels to enhance traction and agility. This allows the new BMW X6 M to handle fast cornering, sudden braking, and acceleration with virtually no body roll.

Under the hood of the new BMW X6 M is a 4.4-litre V8 M TwinPower Turbo engine with High Precision Injection that delivers 555hp and 500 lb-ft of torque from as low as 1,500 rpm to take the new X6 M from 0 to 100 km/h in a staggering 4.7 seconds.

All this heart-pounding power is complemented by an equally dynamic interior. M Sport seats in Merino leather give a sense of total control and safety, even at high speeds. Perfect ergonomic design tilts the cockpit slightly towards the driver in typical BMW fashion, and the latest generation of iDrive offers intuitive navigation and control of the many vehicle settings. An M Sport steering wheel, kneepads, and M-designed instrument cluster challenge the driver to engage in an unforgettable driving experience.

The letter M may have written history, but the latest chapter belongs to the unprecedented driving pleasure and performance of the new BMW X6 M: the world's most powerful Sport Activity Coupé.

BMW Individual





Wood ring intarsia steering wheel available through special order.



Welcome to a world of inspiration. Welcome to BMW Individual.

The epitome of individuality is turning something common into something entirely your own. BMW Individual offers the most demanding, discerning, and eclectic automotive enthusiasts an unmatched level of vehicle personalization.

The astonishing range of luxury features, distinct trims, and optional equipment

available varies from one BMW series to the next, but virtually guarantees no two BMW Individual vehicles will ever be exactly the same. Customization choices include exotic paint colours and finishes, an assortment of the finest leather upholstery, hand-selected wood trims, and a distinctive custom wheel design.

But the finest materials and accessories alone do not make a BMW Individual vehicle. It is the obsessive attention to detail and the passionate process, known only to master craftsmen, that transforms a magnificent BMW into a reflection of individual style and grace. Owners' requests and exacting standards are

seamlessly integrated into their BMW throughout the meticulous manufacturing process, and the final, unique vehicle is delivered to them through their local BMW Individual Retailer with a full factory warranty.

For a personal consultation to discuss the finer details of this program, please contact your local BMW Individual Retailer.

BMW Accessories



Enhance the dynamic look of your BMW with products like alloy wheels, Performance Parts, and interior trim upgrades. Or make use of a wide range of practical solutions, such as roof rack systems and protective mats. See our full selection of Original BMW Accessories at bmw.ca/accessories, or visit your local BMW Retailer for more information.

bmw.ca/accessories



Take performance to the next level

More than just an aesthetic upgrade, BMW Performance Parts are geared to dedicated motoring enthusiasts. From one-of-a-kind steering wheels to advanced air intakes and handmade carbon spoilers, each piece is designed to push the performance of your BMW to the limit.

Of course, each Performance Part is engineered to our high-precision BMW standards and comes with a limited warranty.

Transportation

Original BMW Accessories offer a wide choice of transportation solutions, all designed specifically for your BMW. From the Rear Mounted Bike Carrier to the Base Support System, combined with a variety of attachments, you can bring everything you need along for the ride.

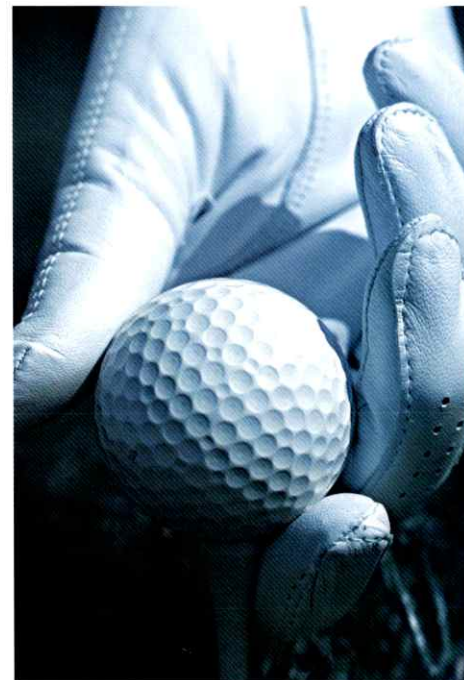
Alloy Wheels

Whether it is 21" black chrome or a two-piece wheel, BMW has a package to suit your style. An Original BMW alloy wheel is instantly recognizable and undergoes the most rigorous development to ensure the ultimate in performance and handling.

Interior Accessories

Your BMW can be customized to reflect a personal style and fulfill all entertainment/communication needs. From striking details like illuminated door entry strips to functional and entertainment accessories such as the portable navigation system and iPod interface kit, BMW has everything needed to personalize the inside of your vehicle.

BMW Lifestyle



From fashionable attire and stylish accessories

to high-precision sporting equipment, nothing complements your vehicle or makes a stronger statement about your passion for living than BMW Lifestyle merchandise. To purchase the collection, visit your BMW Retailer or go to the BMW Online Shop at www.BMWShop.ca.

Lifestyle Accessories | Kids Mobility | Bikes | Miniatures | BMW Yachtsport Collection | BMW Golfsport Collection

BMW EfficientDynamics

BMW EfficientDynamics
Less emissions. More driving pleasure.



At BMW, we strive to continually improve the performance of our vehicles while significantly lowering their fuel consumption and emission levels. We call this plan EfficientDynamics, and it's responsible for the lower emissions you see in the BMW you drive today, as well as the zero emissions you'll see in our vehicles of the future.

Our plan to reach zero emissions

Today's Vehicles

At BMW, we strive to continually improve the performance of our vehicles while significantly lowering fuel consumption and emission levels. We call this plan EfficientDynamics, and it's responsible for the lower emissions in the BMWs of today, as well as our vehicles of the future.

Advanced Diesel Vehicles

2008 marked the Canadian introduction of BMW Advanced Diesel with BluePerformance technology. With emission levels that comply with the strictest of North American regulations, this international award-winning engine is among the cleanest and most efficient in the world. Enjoy over 900 km of BMW performance per tank in the



BMW X5 xDrive35d or an additional 200 km per tank in the BMW 335d.* Remarkable performance and greatly reduced emissions suggest it's time to rethink diesel.

ActiveHybrid Vehicles

With an already impressive track record of milestone achievements, BMW's range of EfficientDynamics technologies continues on the quest to reduce emissions and maximize driving pleasure. The BMW ActiveHybrid X6 is the latest step towards our goal of zero emissions, and December 2009 marks its Canadian debut.

Under the hood of every BMW already lies one of the world's best engines, and in the case of the BMW ActiveHybrid X6, advanced combustion and electric motors work together, delivering 575 lb-ft of torque from an incredibly low 1,500 rpm.** With a combined fuel consumption figure

of 9.9 L/100 km,† this vehicle stands out as the most efficient and dynamic of all performance hybrids.



Additional BMW EfficientDynamics technologies, including Brake Energy Regeneration and Auto Start/Stop functionality, come standard on the ActiveHybrid X6, making it among the first BMW models in Canada to feature such award-winning innovations. Using the kinetic energy spent taking your foot on and off the throttle, Brake Energy Regeneration boosts the engine and stores energy for later use. Another

advanced technology making its premiere is an Auto Stop/Start functionality. Both an environmental and economical feature, Stop/Start switches the engine off when the car is at a standstill, cutting fuel consumption and emissions, especially in urban traffic.

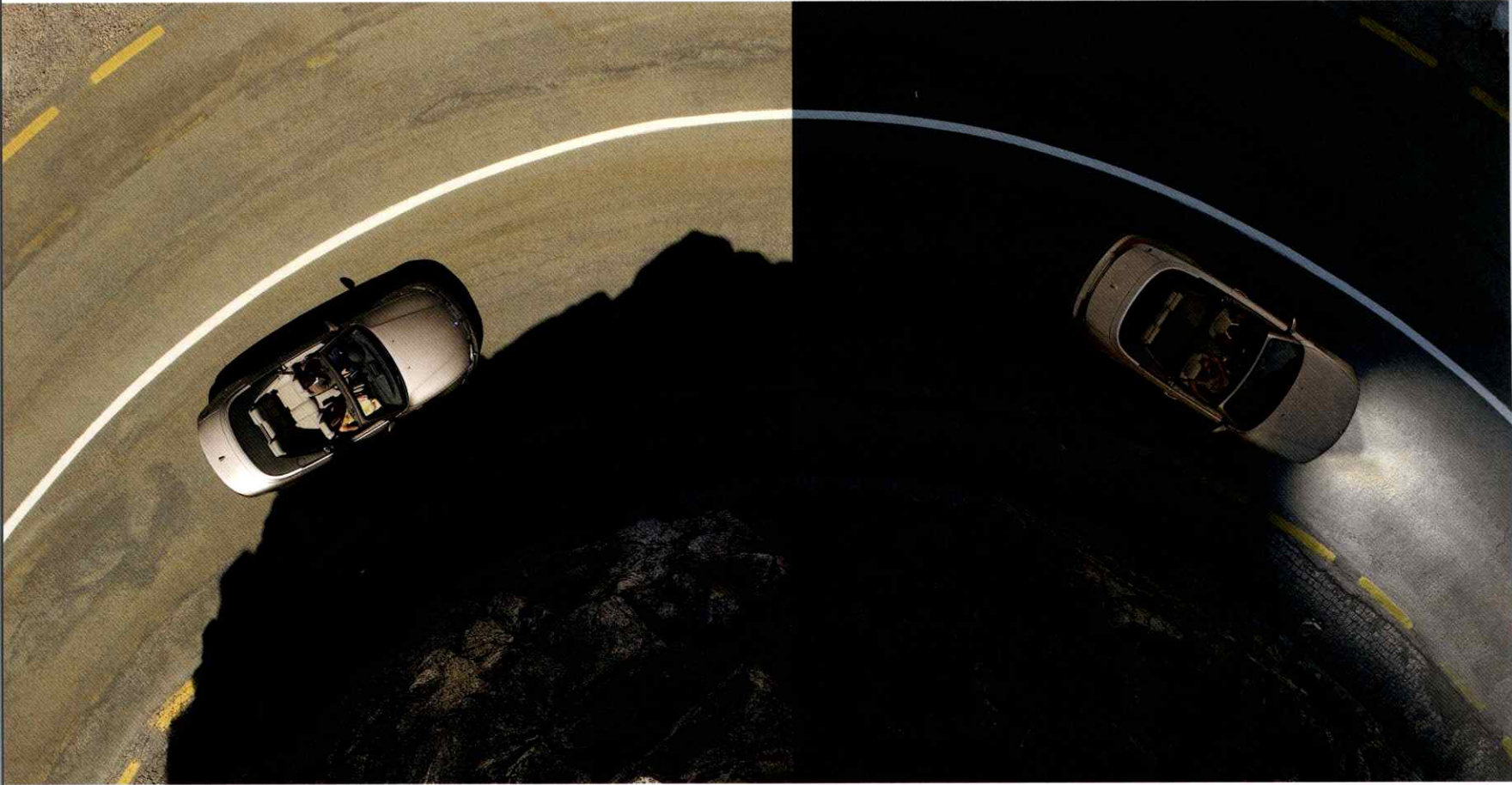
The new ActiveHybrid X6 is a perfect example of BMW's ability to enhance efficiency without compromising performance. The ActiveHybrid X6 is equipped with an automatic function that allows it to run on electric power for brief periods of time. In fact, when the car has achieved enough speed, the combustion engine can be decoupled on a level stretch where there is minimal use of the accelerator pedal. This means the vehicle can run exclusively on electric power at speeds up to just over 60 km/h – further proof that driving pleasure and fuel economy can go hand in hand.

*Based on the average kilometre range for gasoline-powered Model Year 2009 vehicles, including Audi A4 3.2 quattro, Lexus IS 350, Mercedes-Benz C350, and BMW 335i.

**Refers to the combination of individual values of the combustion engine and electric motor.

†Preliminary figure. Not official.

Innovative Technologies





Active Steering

Active Steering improves steering response on twisty roads and directional stability at higher speeds, giving you greater control in virtually all driving situations. This revolutionary variable steering ratio system from BMW was named "Best New Technology" for 2004 by the Automobile Journalists Association of Canada (AJAC).



SIRIUS Satellite Radio

With 120 channels of music, sports, news, talk, and comedy, SIRIUS provides you the freedom to choose your audio experience wherever you drive. Combined with coast-to-coast coverage, you'll have the freedom to listen to what you want, when you want, in your SIRIUS-equipped vehicle. And it's all at your fingertips, integrated into your BMW. Visit sirius.ca/bmw for more information.



Valvetronic

Eliminating the conventional throttle, the Valvetronic electromechanical valve control system provides fully variable valve lift on the inlet valves to control power. The result: a plateau-like torque curve that delivers smooth and consistent power distribution and optimum fuel economy. Engines with Valvetronic are now standard on many BMW models.



Lane Departure Warning

This system is activated whenever the driver unintentionally leaves the car's current lane (i.e., without indicating). The system is operational at speeds of over 70 km/h and, like Lane Change Warning, alerts the driver by making the steering wheel vibrate. The technology uses road markings in order to identify lanes, but can recognize the edge of the road even when it is not marked.



BMW Night Vision

BMW Night Vision uses Far Infrared (FIR) technology to help you "see" objects even before they are clearly visible in your headlights. People, animals, and other objects are detected from as far as 300 metres down the road and are displayed in the Control Display, enabling you to avoid danger in good time on poorly lit roads.



Head-Up Display

This active safety feature projects important driving information directly onto the vehicle's windshield. With current speed or navigational prompts displayed in the driver's line of sight, visual focus no longer has to change from a long to a short perspective and back again to read key dash gauges, but rather can remain firmly focused on the road ahead.



Twin Turbo Technology

Turbo lag and poor fuel efficiency are two common problems associated with turbocharging. However, by using two turbochargers, each supplying three cylinders with compressed air, BMW's Twin Turbo engine eliminates turbo lag. This engine also employs BMW's High Precision Injection technology, resulting in even more fuel efficiency than for a naturally aspirated engine of the same power.



Active Cruise Control

Active Cruise Control enables comfortable driving at a pre-set speed. When driving in heavy traffic, it recognizes slower vehicles ahead and automatically maintains a set distance. Once the road is free again, it accelerates your vehicle automatically to the pre-set speed. Stop & Go function enables slowing to a standstill and restarting in typical bumper-to-bumper situations.

Active Safety

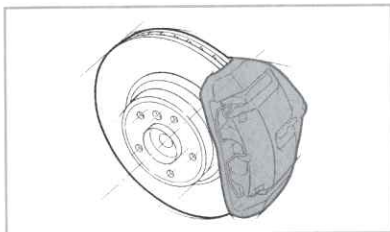
BMW Active Safety features are the performance attributes that have been proven to aid in accident avoidance. After all, the best way to survive an accident is to prevent one in the first place.

- Quick acceleration helps you avoid dangerous situations.
- Nimble handling and responsive steering allow you to manoeuvre around obstacles.
- High-performance brakes offer outstanding stopping power, reduced weight versus conventional brake systems, a significantly higher standard of driving comfort, and a much longer service life.
- Anti-lock braking systems help maintain control in heavy braking situations.
- Brilliant headlights ensure obstacles appear sooner, increasing response time.
- Near-perfect 50:50 weight distribution contributes to vehicle balance during evasive manoeuvres.
- Adaptive Headlights provide enhanced visibility at night, by adjusting to illuminate the road ahead as the vehicle enters a corner or bend.
- Adaptive Brakelights help vehicles travelling behind you evaluate your braking more accurately, with additional lighting areas and/or brighter illumination under heavy braking.
- Park Distance Control (PDC) facilitates parking and manoeuvring in tight spaces. A warning signal sounds as the car approaches an obstacle.
- Dynamic Stability Control (DSC) compensates for over- and understeer.

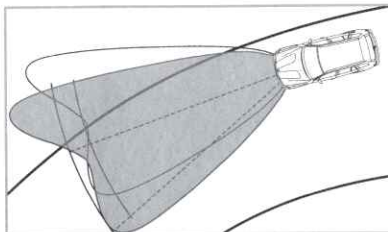


Added features of DSC:

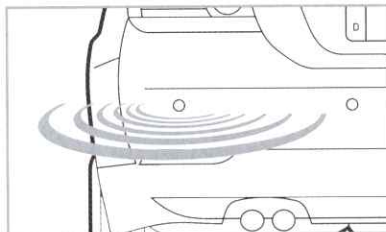
- Brake Standby reduces stopping distances in emergency situations.
- Brake Drying improves stopping in wet conditions.
- Start-off Assistant ensures worry-free hill starts without rolling backwards.
- Fading Compensation allows for consistent braking, even after brakes have heated up.
- Soft Stop reduces brake dive and allows for smoother stops in all conditions.



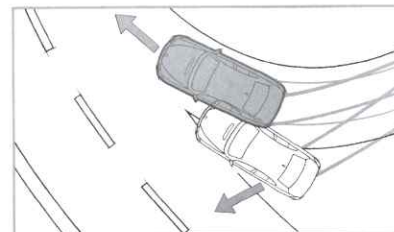
High-Performance Brakes



Adaptive Headlights



Park Distance Control

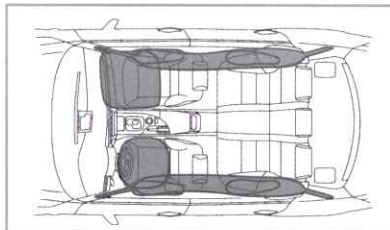
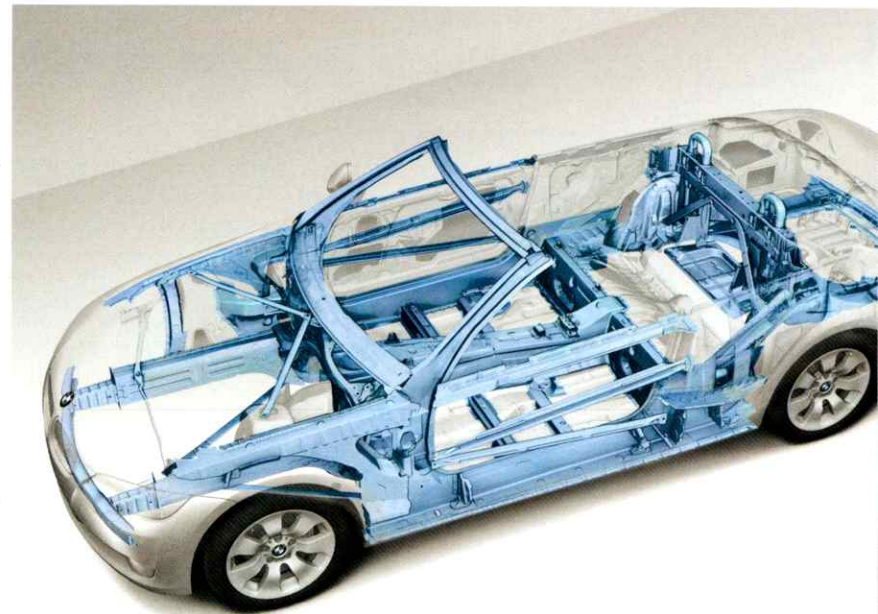


Dynamic Stability Control (DSC)

Passive Safety

In the event of an unavoidable accident, BMW Passive Safety features instantly work to deliver the absolute highest levels of safety.

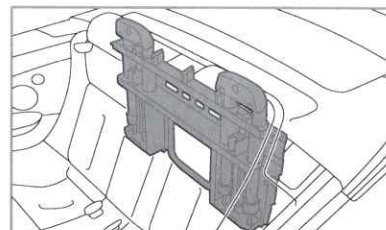
- Extremely rigid aluminum chassis (on select models), highly stable pillars, roof supports, and side-impact bars form a “safety cell” that routes impact energy around you and your passengers.
- Upon severe impact, the fuel supply is instantly cut off, and the Battery Safety Terminal disconnects the starter cable from the battery, minimizing the risk of fire.
- After a collision, the headlights automatically flash, the interior lights come on, and the doors unlock, allowing emergency personnel immediate access to the interior.
- Every BMW includes “smart” front airbags and large-area side-impact airbags.
- Many BMW models also offer an innovative side-impact door anchoring system, an award-winning Head Protection System (HPS), and Active Knee Protection.
- Many BMWs feature a rear Head Protection System and rear side-impact airbags.
- Front Active Headrests, available on some models, reduce the risk of whiplash in the case of a rear-impact collision.
- Active Roll Stabilization improves handling by reducing body roll or lean in extreme cornering situations.
- The Rollover Protection System engages instantly, raising rollover bars in the rear headrests during critical driving occurrences.
- Run-flat tires have reinforced sidewalls to maintain their shape and full use upon a loss of air pressure. They can be driven for up to about 150 kilometres at reduced speeds.



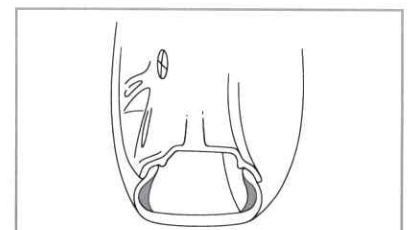
Airbag System



Active Headrests and Safety Belt Pre-Tensioners



Rollover Protection System



Run-Flat Tires

BMW Run-Flat Safety Tires

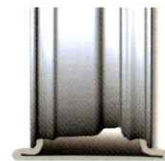


Peace of mind without the need for a spare.

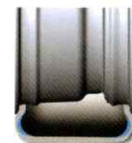
With BMW Run-flat Safety tires, never again will you find yourself stranded by a flat tire in the last place you want to be. Even in the event of sudden air pressure loss, drivers can continue on their journey in safety and control at speeds up to 80 km/h for a distance of up to 150 kilometres.

Reinforced tire sidewalls remain stable during blowouts, helping you maintain total control of the vehicle and get out of potentially hazardous situations, including having to change a tire in an unsafe location.

All new vehicles include a BMW Run-flat Indicator that monitors air pressure and warns the driver, via a light on the dashboard, if pressure drops drastically. With no need for a spare tire, drivers save space and reduce extra weight, increasing fuel efficiency while maintaining The Ultimate Driving Experience.



After a puncture
Conventional tire and wheel.



After a puncture
Run-flat Safety tire system with
SST (Self-Supporting Tire) and
EH2 (Extended Hump) wheel.

BMW Driver Training



Master the art of driving.

Since 1977, BMW Driver Training has led the world in making people safer, more assured drivers. Highly qualified BMW instructors utilize both classroom theory and exhilarating exercises to teach superior road safety skills and high-performance driving.

BMW offers this unique opportunity in the form of four progressive levels: Advanced,

Perfection, and Fascination I and II. Compact, our newest exciting addition, is a half-day course designed to teach the key basic elements and the elementary vehicle dynamics that make a confident, capable driver. Once they have completed Advanced, Driver Training participants graduate to higher skill levels, learning everything from vision and braking to

high-speed emergency manoeuvres, including skid control.

Another innovative addition is Winter Driver Training, an invaluable experience for any Canadian drivers looking to further their skills and ensure their safety. This full-day course covers vital winter driver instruction, such as steering techniques, emergency braking, and skid control.

The BMW Driver Training program is open to all licensed Canadian drivers who aim to drive with unmitigated confidence. Whether you own a BMW or not, our perspective is that you will become a more confident, more aware driver, resulting in safer roads for everyone.

Courses | **Compact** (1/2 day) | **Advanced** (1 day) | **Perfection** (1 day) | **Fascination I** (2 days) | **Fascination II** (1 day) | **Winter Driver Training** (1 day)

BMW Assist™



BMW Assist™: Safety and convenience, with you through every turn.

BMW Assist uses advanced technology to bring the focused attention of a highly trained representative to your aid when needed, ensuring unparalleled confidence and convenience in every drive. There are a number of benefits to BMW Assist:

Safety

Advanced Automatic Collision Notification

This emergency system automatically notifies the BMW Assist Response Centre and sends aid to your location if you've been involved in an accident. Help is sent even if you are unable to respond.

Emergency Request

In case of an emergency, the BMW Assist Response Centre is a touch of a button away from helping you secure or find help.

Enhanced Roadside Assistance

By using the BMW Assist system instead of a conventional phone number, BMW Roadside Assistance can be dispatched to your exact location with the fewest possible delays.

Convenience

TeleService*

Your BMW's on-board monitoring system can automatically send a message about your vehicle's maintenance needs using BMW Assist. The driver can also make a manual TeleService call using the iDrive® system. In either case, a notification is received at your preferred BMW Retailer. A Retailer specialist will contact you to arrange a convenient service appointment.

MyInfo "Send to Car"

Send point-of-interest (POI) information to your BMW by using Google Maps, and the data will be sent to your vehicle's on-board display. The POI name, address, and phone number are received in-vehicle within seconds. From there, call the

destination using Bluetooth integration or select the destination using BMW On-board Navigation.

Destination Download

Push the "Concierge" button in your vehicle's BMW Assist menu and speak to a BMW Assist specialist who can send up to ten POIs to your vehicle using a point-of-interest database. These POIs can be called using Bluetooth integration or sent to your vehicle's BMW On-board Navigation system.

Stolen Vehicle Recovery

Vehicle stolen? If so, call the BMW Assist Response Centre after filing a police report. BMW Assist will send a locate signal to your BMW and work with police to secure your vehicle.



Remote Door Unlock

Locked out? Call the BMW Assist Centre, inform them of your name and unique password, and a signal will be sent to your vehicle to unlock the driver's door.

Customer Relations Function

Use your BMW Assist system to contact BMW Canada's Customer Interaction Centre (CIC). Simply ask your BMW Assist response specialist to connect you during CIC business hours.

Bluetooth® Hands-Free Calling**

This hands-free calling feature allows you to answer and make calls, access your phonebook, and interact with others using a safe and convenient Bluetooth wireless connection, your vehicle's audio system, and easy-to-use interfaces.

* On select BMW vehicles. Consult your BMW Retailer for details.

** For optimal integration with your vehicle, BMW-tested mobile devices are recommended. Visit www.bmw.ca/Bluetooth for more information.

xDrive All-Wheel Drive



xDrive® All-Wheel Drive

Only xDrive marries legendary BMW performance with advanced All-Wheel Drive traction and control.

xDrive is so innovative that it can sense danger and correct itself before the driver even realizes there is a problem. This intelligent All-Wheel Drive system has the technology to react to poor road conditions and transfer power in an astounding 100 milliseconds.

xDrive distributes engine output continuously and variably between front and rear axles.

The variable allocation of engine output has an instantly positive influence on steering behaviour. In this way, xDrive supports agility by enhancing steering responsiveness and direct stability, thus increasing safety, exceptional driving dynamics, and outstanding traction on any surface. The end result is an incomparable driving experience, no matter what the terrain.


There is only one way to truly appreciate the impact of the xDrive system, and that is, of course, behind the wheel. Now that xDrive is available on 14 BMW models, from the Coupé, Sedans, and Tourings to Sports Activity Vehicles, there is sure to be an xDrive-equipped BMW waiting for you.

BMW Certified Series

Purchase with certified confidence.

With BMW Certified Series, you will find an exclusive lineup of Pre-Owned vehicles. Not just any Pre-Owned BMW can achieve the Certified Series badge. Each vehicle is subject to meticulous inspections and reconditioning processes, performed by trained technicians. It's a very thorough procedure, and it ensures your Pre-Owned BMW performs precisely like a new one.

The benefits of owning a BMW Certified Series are clear:

- Exclusivity** – An exclusive selection of BMW vehicles verified by  CarProof VEHICLE HISTORY REPORTS
- Assurance** – 3-day / 300 km exchange privilege.
- Quality** – Comprehensive 360-degree survey and reconditioning process.
- Safety** – Certified Series® Protection Plan for up to 6 years or 160,000 km.
- Security** – 24-hour roadside assistance.
- Value** – Special rates and affordable leasing and financing products.

Our six standards of excellence guarantee that with every Certified Series vehicle we sell, you receive the performance and quality for which BMW is renowned. Realize that exhilaration and joy are well within your reach. BMW Certified Series – only available at your BMW Retailer.



BMW Service and Warranty



When you buy a BMW, you can look forward to outstanding service and comprehensive customer care. 2010 model year BMW vehicles purchased from an authorized BMW Retailer in Canada are covered by No-Charge Scheduled Maintenance for four years or 80,000 kilometres, whichever occurs first. Depending on the model you choose, your car informs you of its service requirement via the Service Interval Indicator or CBS (Condition Based Service). Your BMW Retailer is equipped with the latest computer-aided information and diagnostic tools. Important data such as V.I.N. number, mileage, and current service requirements are all stored on your car key, ensuring a quick assessment of your vehicle's status.

Maintenance upgrades and Value Service Packages are also available for your convenience. BMW Service guarantees only Genuine BMW Parts are installed by Certified Technicians, ensuring The Ultimate Driving Experience is never compromised.



All backed by a two-year parts and labour warranty for your peace of mind.

BMW Roadside Assistance

Think of it as your safety net. No matter where you go, we've got you covered. Your BMW Service Card entitles you to one of the most extensive Roadside Assistance programs in Canada, with the following range of benefits:

- Emergency Service Calls
- Travel Planning Services
- Trip Interruption Benefits
- Traffic Accident Services
- Mechanical Breakdown Towing
- Emergency Message Service
- Emergency Cash
- Winching

Roadside Assistance is included with the purchase of a new BMW, for the first four years (unlimited kilometres).



Vehicle Warranty Coverage

Warranty Summary	Years/km*
New Car Limited Warranty	4 yrs / 80,000 km
Limited Emission Control Warranty Component Specific Control Devices	4 yrs / 80,000 km 8 yrs / 130,000 km
Limited Rust Perforation Warranty (prior to model year 2004)	6 yrs / unlimited km
Limited Rust Perforation Warranty (model year 2004 and up)	12 yrs / unlimited km
Roadside Assistance Service	4 yrs / unlimited km
No-Charge Scheduled Maintenance	4 yrs / 80,000 km

* Whichever occurs first.

BMW Financial Services



Financing driven by you.®

At BMW Financial Services, we have always believed that your financing experience should be as enjoyable and rewarding as your driving experience. Whichever BMW model you choose, we offer a comprehensive portfolio of leasing, financing, and protection products designed to complement your Ultimate Driving Experience.

BMW Financial Services is dedicated to giving BMW customers the type of products and professional, efficient services needed to make the transition from showroom to highway as pleasant and memorable as possible.

Our goal is to provide you with the unparalleled service you expect and the insight you require to choose the leasing or financing program that is best suited to you.



Protection Products

Peace of mind is paramount for an enjoyable driving experience. Designed for both security and value, there's no better option to protect you, your vehicle, and your loved ones than BMW Financial Services Protection Products.

Road Hazard Protection Protect your tires and rims, and steer clear of repair costs. Because the road will never be as perfect as the ride.

Excess Wear & Use Protection Put your mind at ease about unforeseen costs at the end of your lease. Wear and tear happens no matter how careful you are.

Creditor Life & Disability Insurance Choose Creditor Life and Disability Insurance to complement your lease or loan. Because the road of life can be uncertain.



Leasing Plans

What you need to get you where you want to go. If you're interested in lower monthly payments and the luxury of driving a new BMW more often, then leasing is a smart way to discover the pleasure of a BMW. We offer a range of intelligent leasing programs that are designed to meet your needs and get you on the road, effortlessly.



Standard Lease

Looking to experience the excitement of a BMW at a payment you're comfortable with? Our Standard Lease offers competitive rates, closed-end leasing, and flexible downpayment options and lease terms. GAP protection is provided at no charge, and there are no upfront administration or disposition fees at contract maturity.



Single Payment Lease

The innovation behind this plan is that you make one single payment at the beginning of the contract, and then you're free to enjoy the vehicle for the life of the lease. There are no monthly payments. In short, it's all the convenience of a cash purchase with all the advantages of a Standard Lease.



Multiple Security Deposit Lease

This lease is a clever way to lower the cost of borrowing and save money at the same time. This option affords you the luxury of applying additional, refundable security deposits, which in turn reduces the interest rate on your lease. For many drivers, it has become a smart alternative to a traditional cash downpayment.



Financing Plans

Discover our products. Experience our advantages. If you want to own your BMW or like to drive a lot, there's really no better choice than financing your vehicle through BMW Financial Services. Designed with an appreciation for simplicity, value, freedom, and flexibility, our smart financing programs can get you into the driver's seat of your very own BMW.



Standard Finance

There's nothing like the freedom and pride that come with owning your very own BMW. Whether it's the lustre of a new BMW or the proven performance of a pre-owned vehicle, our Standard Finance plan is known as much for its simplicity as for its flexibility. Features include competitive interest rates, with flexible contract terms and downpayment options.



OwnersChoice®

This unique financing option serves as an interesting alternative, because it integrates the privileges of ownership with many of the beneficial features of leasing. With OwnersChoice, you make equal monthly payments over the term of your contract and a payment for a balloon amount at contract maturity. It offers the luxury of lower monthly payments with all the conveniences of ownership.



Contact Us

If you would like more information, please feel free to contact us, or visit your local BMW Retailer.

You can also explore all of our different leasing and financing options on our website and use our convenient online "Payment Calculator" to estimate a monthly payment that best suits your specific needs.

BMW Vehicle Specifications

	1 Series Coupé		1 Series Cabriolet		3 Series Sedan	
	128i	135i	128i	135i	323i	328i
Engine and Drivetrain						
Engine	DOHC I-6 24V	DOHC I-6 24V	DOHC I-6 24V	DOHC I-6 24V	DOHC I-6 24V	DOHC I-6 24V
Horsepower (hp/rpm)	230 @ 6500	300 @ 5800	230 @ 6500	300 @ 5800	200 @ 6000	230 @ 6500
Torque (lb-ft/rpm)	200 @ 2750	300 @ 1400	200 @ 2750	300 @ 1400	180 @ 4000	200 @ 2750
Drivetrain	RWD	RWD	RWD	RWD	RWD	RWD
Transmission (manual/automatic/SMG)	6-M/6-A	6-M/6-A	6-M/6-A	6-M/6-A	6-M/6-A	6-M/6-A
Performance Data						
Acceleration , 0-100 km/h (manual/automatic), seconds	6.4/7.0	5.4/5.5	6.7/7.3	5.7/5.8	7.4/8.1	6.7/7.3
Top speed , km/h	210	240	210	240	210	210
Fuel Consumption						
City (manual/automatic/SMG)	10.9/11.3	11.5/11.9	10.9/11.4	11.9/11.9	11.1/11.2	10.9/11.3
Highway (manual/automatic/SMG)	7.0/6.9	7.7/7.8	7.0/7.3	7.7/7.6	6.9/6.7	7.0/6.9
Dimensions and Weight						
Fuel capacity , L	53	53	53	53	61	61
Luggage capacity , L	370	370	260-305	260-305	460	460
Curb weight (manual/automatic), kg	1475/1510	1530/1535	1585/1620	1660/1665	1500/1530	1525/1555
Safety, Security, and Other Features						
Adaptive Brakelights	•	•	•	•	•	•
Adaptive Headlights	—	•	—	•	—	—
Advanced Head Protection (AHPS II)	•	•	HPS	HPS	•	•
BMW Assist with Bluetooth Wireless Technology	◦	◦	◦	◦	◦	◦
SIRIUS Satellite Radio	◦	◦	◦	◦	◦	◦
BMW Individual	—	—	—	—	—	—
BMW Navigation	◦	◦	◦	◦	—	◦
Dynamic Stability Control (DSC)	•	•	•	•	•	•
Dynamic Traction Control	•	•	•	•	•	•
Front airbags (with SMART airbag deployment)	•	•	•	•	•	•
Side thorax airbags	•	•	•	•	•	•
Run-flat tires	•	•	•	•	•	•
BMW Service and Warranty						
Warranty (months/1,000 km*)	48/80	48/80	48/80	48/80	48/80	48/80
No-Charge Scheduled Maintenance (months/1,000 km*)	48/80	48/80	48/80	48/80	48/80	48/80

• Standard ◦ Optional — Not Available

* Whichever occurs first

Further information can be obtained from your local BMW Retailer or www.bmw.ca

3 Series Sedan				3 Series Touring	3 Series Coupé				3 Series Cabriolet
335i	335d	328i xDrive	335i xDrive	328i xDrive	328i	335i	328i xDrive	335i xDrive	328i
DOHC I-6 24V	DOHC I-6 24V	DOHC I-6 24V	DOHC I-6 24V	DOHC I-6 24V	DOHC I-6 24V	DOHC I-6 24V	DOHC I-6 24V	DOHC I-6 24V	DOHC I-6 24V
300 @ 5800	265 @ 4200	230 @ 6500	300 @ 5800	230 @ 6500	230 @ 6500	300 @ 5800	230 @ 6500	300 @ 5800	230 @ 6500
300 @ 1400	425 @ 1750	200 @ 2750	300 @ 1400	200 @ 2750	200 @ 2750	300 @ 1400	200 @ 2750	300 @ 1400	200 @ 2750
RWD	RWD	AWD	AWD	AWD	RWD	RWD	AWD	AWD	RWD
6-M/6-A	6-A	6-M/6-A	6-M/6-A	6-M/6-A	6-M/6-A	6-M/6-A	6-M/6-A	6-M/6-A	6-M/6-A
5.7/5.9	6.3	7.2/7.5	5.6/5.7	7.4/7.7	6.6/7.2	5.6/5.8	7.1/7.4	5.5/5.6	7.2/7.7
210	210	210	210	210	210	210	210	210	210
11.9/11.9	9.0	12.2/11.9	12.2/12.2	12.2/11.9	10.9/11.3	11.9/11.9	12.2/11.9	12.2/12.2	12.2/11.4
7.7/7.6	5.4	7.6/7.8	7.9/7.9	7.6/7.8	7.0/6.9	7.6/7.6	7.6/7.8	7.9/7.9	7.4/7.3
61	61	61	61	61	61	61	61	61	61
450	450	460	450	460-1385	440	430	440	430	210-350
1630/1635	1735	1635/1655	1730/1735	1710/1730	1520/1550	1620/1625	1625/1645	1705/1710	1720/1750
•	•	•	•	•	•	•	•	•	•
•	—	—	•	—	•	•	•	•	•
•	•	•	•	•	•	•	•	•	HPS
•	◦	◦	•	◦	◦	•	◦	•	◦
◦	◦	◦	◦	◦	◦	◦	◦	◦	◦
◦	◦	—	◦	—	—	◦	—	◦	—
◦	◦	◦	◦	◦	◦	◦	◦	◦	◦
•	•	•	•	•	•	•	•	•	•
•	•	•	•	•	•	•	•	•	•
•	•	•	•	•	•	•	•	•	•
•	•	•	•	•	•	•	•	•	•
48/80	48/80	48/80	48/80	48/80	48/80	48/80	48/80	48/80	48/80
48/80	48/80	48/80	48/80	48/80	48/80	48/80	48/80	48/80	48/80

BMW Vehicle Specifications

	3 Series Cabriolet	5 Series Sedan				5 Series Touring
	335i	528i	550i	528i xDrive	535i xDrive	535i xDrive
Engine and Drivetrain						
Engine	DOHC I-6 24V	DOHC I-6 24V	DOHC V8 32V	DOHC I-6 24V	DOHC I-6 24V	DOHC I-6 24V
Horsepower (hp/rpm)	300 @ 5800	230 @ 6500	360 @ 6300	230 @ 6500	300 @ 5800	300 @ 5800
Torque (lb-ft/rpm)	300 @ 1400	200 @ 2750	360 @ 3400	200 @ 2750	300 @ 1400	300 @ 1400
Drivetrain	RWD	RWD	RWD	AWD	AWD	AWD
Transmission (manual/automatic/SMG/DCt)	6-M/6-A	6-M/6-A	6-M/6-A	6-M/6-A	6-M/6-A	6-M/6-A
Performance Data						
Acceleration , 0-100 km/h (manual/automatic), seconds	5.8/6.0	6.9/7.6	5.6/5.7	7.6/8.1	5.8/6.0	6.0/6.1
Top speed , km/h	210	240	240	240	240	240
Fuel Consumption						
City (manual/automatic/SMG/DCt)	11.9/11.9	10.9/11.4	14.0/13.4	12.2/11.9	12.2/12.2	13.5/12.8
Highway (manual/automatic/SMG/DCt)	7.7/7.6	7.0/7.3	9.0/8.4	7.6/7.8	7.9/7.9	8.5/8.2
Dimensions and Weight						
Fuel capacity , L	61	70	70	70	70	70
Luggage capacity , L	210-350	520	520	520	520	500-1650
Curb weight (manual/automatic/DCt), kg	1815/1825	1590/1620	1790/1800	1710/1730	1770/1790	1860/1880
Safety, Security, and Other Features						
Adaptive Brakelights	•	•	•	•	•	•
Adaptive Headlights	•	—	•	—	•	•
Advanced Head Protection (AHPS II)	HPS	•	•	•	•	•
BMW Assist with Bluetooth Wireless Technology	•	•	•	•	•	•
SIRIUS Satellite Radio	◦	◦	◦	◦	◦	◦
BMW Individual	◦	◦	◦	◦	◦	◦
BMW Navigation	◦	◦	•	◦	◦	◦
Dynamic Stability Control (DSC)	•	•	•	•	•	•
Dynamic Traction Control	•	•	•	•	•	•
Front airbags (with SMART airbag deployment)	•	•	•	•	•	•
Side thorax airbags	•	•	•	•	•	•
Run-flat tires	•	—	—	—	◦	—
BMW Service and Warranty						
Warranty (months/1,000 km*)	48/80	48/80	48/80	48/80	48/80	48/80
No-Charge Scheduled Maintenance (months/1,000 km*)	48/80	48/80	48/80	48/80	48/80	48/80

• Standard ◦ Optional — Not Available
 * Whichever occurs first † Preliminary figures. Not official.

Further information can be obtained from your local BMW Retailer or www.bmw.ca

[illegible]

BMW Vehicle Specifications

	X5			X6		
	X5 xDrive30i	X5 xDrive35d	X5 xDrive48i	X6 xDrive35i	X6 xDrive50i	ActiveHybrid X6
Engine and Drivetrain						
Engine	DOHC I-6 24V	DOHC I-6 24V	DOHC V8 32V	DOHC I-6 24V	DOHC V8 32V	DOHC V8 32V
Horsepower (hp/rpm)	260 @ 6600	265 @ 4200	350 @ 6300	300 @ 5800	400 @ 5500	400 @ 5500
Torque (lb-ft/rpm)	225 @ 2750	425 @ 1750	350 @ 3400	300 @ 1400	450 @ 1800	450 @ 1750
Drivetrain	AWD	AWD	AWD	AWD	AWD	AWD
Transmission (manual/automatic/SMG/DCT)	6-A	6-A	6-A	6-A	6-A	7-A
Performance Data						
Acceleration , 0-100 km/h (manual/automatic), seconds	8.4	7.4	6.9	6.9	5.6	5.8
Top speed , km/h	210	210	210	210	210	210
Fuel Consumption						
City (manual/automatic/SMG/DCT)	13.6	10.7	15.6	14.4	17.1	12.7†
Highway (manual/automatic/SMG/DCT)	9.3	7.5	10.2	10.0	11.0	10.4†
Dimensions and Weight						
Fuel capacity , L	85	85	85	85	85	85
Luggage capacity , L	620-1750	620-1750	620-1750	570	570	470-1350
Curb weight (manual/automatic/DCT), kg	2230	2370	2380	2220	2390	2580
Safety, Security, and Other Features						
Adaptive Brakelights	•	•	•	•	•	•
Adaptive Headlights	•	•	•	•	•	•
Advanced Head Protection (AHPS II)	•	•	•	•	•	•
BMW Assist with Bluetooth Wireless Technology	•	•	•	•	•	•
SIRIUS Satellite Radio	◦	◦	◦	◦	◦	•
BMW Individual	◦	◦	◦	◦	◦	—
BMW Navigation	◦	◦	◦	◦	•	•
Dynamic Stability Control (DSC)	•	•	•	•	•	•
Dynamic Traction Control	•	•	•	•	•	•
Front airbags (with SMART airbag deployment)	•	•	•	•	•	•
Side thorax airbags	•	•	•	•	•	•
Run-flat tires	•	•	•	•	•	•
BMW Service and Warranty						
Warranty (months/1,000 km*)	48/80	48/80	48/80	48/80	48/80	48/80
No-Charge Scheduled Maintenance (months/1,000 km*)	48/80	48/80	48/80	48/80	48/80	48/80

• Standard ◦ Optional — Not Available

* Whichever occurs first † Preliminary figures. Not official.

Further information can be obtained from your local BMW Retailer or www.bmw.ca

Z4		M Vehicles							
Z4 sDrive30i	Z4 sDrive35i	M3 Sedan	M3 Coupé	M3 Cabriolet	M5 Sedan	M6 Coupé	M6 Cabriolet	X5 M	X6 M
DOHC I-6 24V	DOHC I-6 24V	DOHC V8 32V	DOHC V8 32V	DOHC V8 32V	DOHC V10 40V	DOHC V10 40V	DOHC V10 40V	DOHC V8 32V	DOHC V8 32V
255 @ 6600	300 @ 5800	414 @ 8300	414 @ 8300	414 @ 8300	500 @ 7750	500 @ 7750	500 @ 7750	555 @ 6000	555 @ 6000
220 @ 2600	300 @ 1400	295 @ 3900	295 @ 3900	295 @ 3900	383 @ 6100	383 @ 6100	383 @ 6100	500 @ 1500	501 @ 1500
RWD	RWD	RWD	RWD	RWD	RWD	RWD	RWD	AWD	AWD
6-M/6-A	6-M/7-DCT	6-M/7-DCT	6-M/7-DCT	6-M/7-DCT	6-M/7-SMG	6-M/7-SMG	6-M/7-SMG	6-A	6-A
5.9/6.3	5.3/5.2	4.9/4.7	4.8/4.6	5.3/5.1	4.7	4.6	4.8	4.7	4.7
210	210	250	250	250	250	250	250	250	250
10.9/11.3	11.5/12.2	15.3/15.4	15.3/15.4	15.7/15.7	19.9/18.2	19.9/18.2	20.3/18.0	17.2	17.2
7.0/6.9	7.7/8.2	9.7/9.9	9.7/9.9	10.1/10.1	11.9/11.0	11.9/11.0	11.7/10.8	11.9	11.9
55	56	63	63	63	70	70	70	85	85
180-310	180-310	450	430	210-350	500	450	300-350	620-1750	570-1450
1470/1500	1565/1585	1690	1680	1880	1820	1773	1995	2435	2435
•	•	•	•	•	•	•	•	•	•
•	•	•	•	•	•	•	•	•	•
—	—	•	•	HPS	•	•	HPS	•	•
•	•	•	•	•	•	•	•	•	•
◦	◦	◦	◦	◦	◦	◦	◦	◦	◦
—	—	◦	◦	◦	◦	◦	◦	—	—
◦	◦	◦	◦	◦	•	•	•	•	•
•	•	•	•	•	•	•	•	•	•
•	•	—	—	—	—	—	—	•	•
•	•	•	•	•	•	•	•	•	•
•	•	•	•	•	•	•	•	•	•
•	•	—	—	—	—	—	—	•	•
48/80	48/80	48/80	48/80	48/80	48/80	48/80	48/80	48/80	48/80
48/80	48/80	48/80	48/80	48/80	48/80	48/80	48/80	48/80	48/80

Alberta

Bavaria BMW, Edmonton (780) 484-0000
BMW Gallery, Calgary (403) 275-6492
Calgary BMW, Calgary (403) 253-0338
Edmonton BMW, Edmonton (780) 490-5269

British Columbia

Auto West BMW, Richmond (604) 273-2217
Brian Jessel BMW, Vancouver (604) 222-7788
Kelowna BMW, Kelowna (250) 860-1269
Park Shore BMW, North Vancouver (604) 985-9344
The BMW Store, Vancouver (604) 659-3200
Victoria BMW, Victoria (250) 995-9250

Manitoba

Birchwood BMW, Winnipeg (204) 452-7799

New Brunswick

BMW Moncton, Dieppe (506) 872-5400

Nova Scotia

Halifax BMW, Halifax (902) 454-5000

Ontario

BMW Autohaus, Thornhill (905) 886-3380
BMW Durham, Ajax (905) 619-5522
BMW London, London (519) 685-2277
BMW of Mississauga, Mississauga (905) 625-7533
BMW Toronto, Toronto (416) 623-4269
BMW Waterloo, Waterloo (519) 747-0269
Budds' BMW, Oakville (905) 845-3577
Budds' BMW Hamilton, Hamilton (905) 387-7507
Elite BMW, Ottawa (613) 749-7700
Maranello BMW, Vaughan (416) 213-5699
Open Road BMW, Newmarket (905) 895-8700
Otto's BMW, Ottawa (613) 725-3048
Overseas Motors, Windsor (519) 254-4303
Parkview BMW, Toronto (416) 444-4269
Performance BMW, St. Catharines (905) 934-3356
Sarnia Fine Cars, Sarnia (519) 332-2886
Town + Country BMW, Markham (905) 477-2212

Québec

BMW Canbec, Montréal (514) 731-7871
BMW Laval, Laval (450) 682-1212
BMW Sainte-Julie, Sainte-Julie (450) 922-1633
BMW ville de Québec, Vanier (418) 681-5000
Hamel BMW, Blainville (450) 437-5050
Park Avenue BMW, Brossard (450) 445-4555
Suprem Automobile, Sherbrooke (819) 821-9272
Trois-Rivières BMW, Trois-Rivières (819) 376-6668

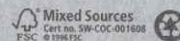
Saskatchewan

Berna Autosport, Saskatoon (306) 955-0900
Dilawri BMW, Regina (306) 525-4269

All specifications, standard features, accessories, equipment, options, fabrics, and colours are based on product information available at the time of printing. BMW reserves the right to revise specifications at any time, without notice. Illustrations are representative only. BMW may determine the Model Year designation of its vehicles. Models may be shown with features, accessories, equipment, options, fabrics, and/or colours not available in Canada, or available only at extra cost, or available only on particular models. While BMW takes care to ensure that the information contained in this brochure is accurate, it cannot guarantee complete accuracy. BMW is not responsible for errors or omissions contained in this brochure. The BlackBerry and RIM families of related marks, images, and symbols are the exclusive properties and trademarks of Research In Motion Limited. "BlackBerry" and "RIM" are registered with the U.S. Patent and Trademark Office and may be pending or registered in other countries. Further information about the products shown in this brochure can be obtained from your authorized BMW Retailer and at www.bmw.ca. Printed 09/2009.



©2009 BMW Canada. Not to be reproduced wholly or in part without prior written permission of BMW Canada Inc. "BMW", the BMW logo, BMW model designations, and all other BMW related marks, images, and symbols are the exclusive properties and/or registered trademarks of BMW AG, used under licence. 93 04 2 029 266



More about BMW

bmw.ca



The Ultimate
Driving Experience