

BMW Security



X5 4.4i

Sheer
Driving Pleasure

X5

BMW X5 Security



BMW Engineered Mobile Security.

Armoured Vehicle Solutions.

4 Competence and expertise

6 Exterior

12 Interior

14 Engine

16 Innovation and technology

18 BMW security concept

20 VR4 protection level

22 Security equipment

24 BMW Service Inclusive

26 Standard and optional equipment

27 Specifications

Competence and expertise.

Safety based on experience.

There are only a few automobile manufacturers in the world with a tradition in building armoured vehicles. BMW has been among them for over 30 years, giving the company the necessary expertise to develop reliable, well-engineered solutions to protect car occupants exposed to safety risks.

The BMW X5 Security is among these mobile security solutions. Innovative technologies and materials ensure comprehensive occupant safety (protection level VR4) while also offering the dynamic performance, comfort and driving enjoyment you associate with a BMW.

- Discreet and confidential advice from competent BMW partners all over the world
- Individual service through the international BMW service network
- Fastest possible parts supply for BMW armoured vehicles, thanks to a world-wide logistics network
- BMW driver training for security vehicles

Exterior.

Security which can't be seen. But felt.

The design reflects the philosophy.
Distinctive, powerful lines emphasise
the BMW X5 pedigree.

Even the standard BMW X5 embodies power and stability. It stands for sporting enjoyment, on any kind of terrain. With its powerful engine and specially adapted suspension, the Security version of the BMW X5 still provides virtually the same level of agility and dynamics as the standard X5. How much added security this vehicle provides, however, is impossible to see from the outside. All protective materials have been discreetly integrated into the body.



Exterior.

Discreet exterior. Premium interior.



Thanks to the intelligent integration of advanced safety technologies, the BMW X5 Security represents a very discreet combination of personal safety and driving enjoyment. From the outside, it's almost impossible to tell it apart from a standard BMW X5 – but once you've closed the doors, you'll know the difference: a reassuring feeling of safety. The integrated security technology is always present, providing reliable protection in any situation.

Security meets aesthetics.

The sporty design of the BMW X5 is just as exciting in the Security version.

Your personal style is all that matters.

Enjoy numerous customised options to reflect your individual style. Almost all the options offered for the BMW X5 standard model are also available for the Security version.

In addition, the BMW X5 Security offers special security options.





Interior.

That's how exciting safety can be.

The BMW X5 excels with its intelligent interior concept: plenty of space for all occupants – and a generous luggage compartment.

High-quality materials, sweeping shapes and well-defined surfaces epitomise functional elegance, conveying a feeling of spaciousness in the interior. And since the security measures go all the way to the tailgate of the X5 Security, the luggage compartment can still be extended by folding down the back seats.

The cockpit of the BMW X5 offers superior ergonomics, allowing for a relaxed and confident driving experience, even in critical situations. Fewer controls ensure clean lines and enhanced comfort, keeping the focus on the driver – and the pleasure of driving.

Engine.
Sporty and efficient.

At the heart of the BMW X5 Security is the efficient and powerful BMW eight-cylinder petrol engine that's also used in the standard model. It uses less fuel, while delivering greater power and torque.



From 0 to 100 km/h in 7.8 seconds: performance and acceleration of the 4.4-litre V8 petrol engine with VALVETRONIC almost match the outstanding figures of the standard model. Which means that despite the additional weight, this security vehicle retains superior power in every situation.

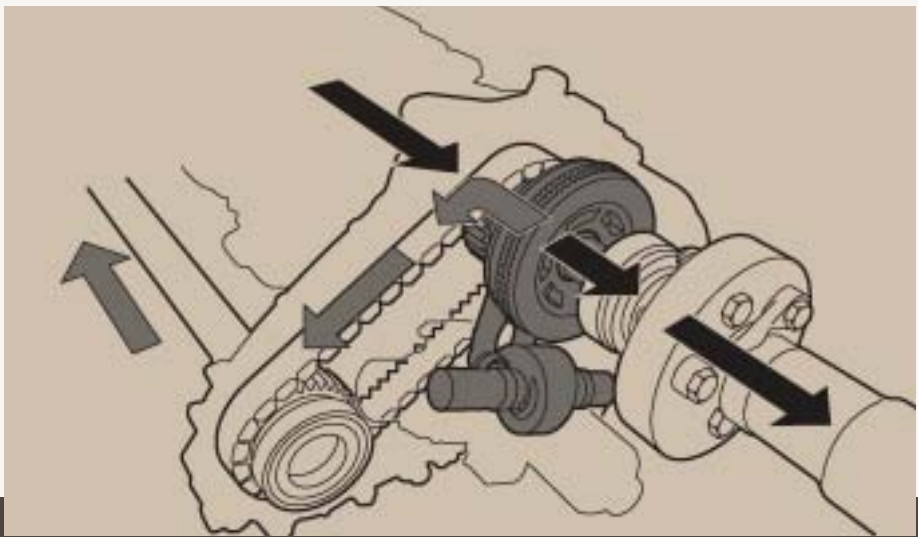
(For performance data, see Specifications.)



Innovation and technology.

Safety on every level.

Under extreme conditions, safety is key. The BMW X5 comes with advanced integrated safety systems which fulfil these high expectations. Especially important: active safety. This is why the driver of a BMW X5 can rely on a comprehensive range of electronic control systems for support in critical situations.



xDrive.

xDrive recognises difficult road surfaces via sensors in the DSC control system and responds within fractions of a second. Thanks to the flexible power distribution between the front and rear axles, the wheels with the best traction will automatically receive optimum power. The result: exceptional directional stability, safe cornering and always reliable power development.

Adaptive Headlights (optional).

The BMW X5 comes with electro-mechanically controlled headlights that turn into the bend when cornering, for optimised illumination of the road ahead. This enhances safety when driving at night or in bad visibility.

Tailgate with Soft Close Automatic.

The tailgate is split in two parts – of course with an overlapping gap. Thanks to the Soft Close Automatic system, the upper part does not have to be fully closed, but instead will be pulled shut automatically.

Dynamic Stability Control (DSC).
The Dynamic Stability Control system performs engine or brake interventions to prevent over- and understeer. The DSC driver assist system includes a number of modules, offering ABS technology as well as Dynamic Traction Control (DTC) and automatic differential brakes.

Dynamic Traction Control (DTC).
Dynamic Traction Control (DTC) is part of the DSC system and can be activated on slippery surfaces. It allows for some wheel spin to improve traction.

Hill Descent Control (HDC).
Hill Descent Control enables the BMW X5 Security to safely negotiate even steep descents at slightly more than walking speed, without the driver having to brake. With HDC activated, the speed can be varied via the plus and minus buttons on the multifunction steering wheel.

Runflat indicator.
The runflat indicator minimises risks arising from a flat tyre. It's the perfect complement to the runflat tyres, which are supplied as standard. The system monitors wheel speed to detect changes in the air pressure of the tyres and alerts the driver via a light in the Check/Control display if there is a problem.



BMW security concept.
Security in every detail.

Tailor-made protection:
The armour plating for the BMW Security models conforms to the VR4 protection level, which means that these cars can withstand impacts from blunt weapons and handguns up to .44 calibre.

For the most exacting requirements, BMW has developed a High Security Concept according to the VR6/VR7 protection level. This armour offers maximum protection against any attacks aimed at the vehicle and its occupants.

All BMW vehicles are built and equipped according to our F.I.R.S.T. (Fully Integrated Road Safety Technology) philosophy, which combines all aspects of active and passive safety in a coherent overall concept. Neutralising risks is the priority.

When it comes to defining requirements for the protection of high-risk passengers, this is our philosophy. It ensures that our security vehicles provide their occupants with correct and appropriate protection at all times.

1.
F.I.R.S.T.

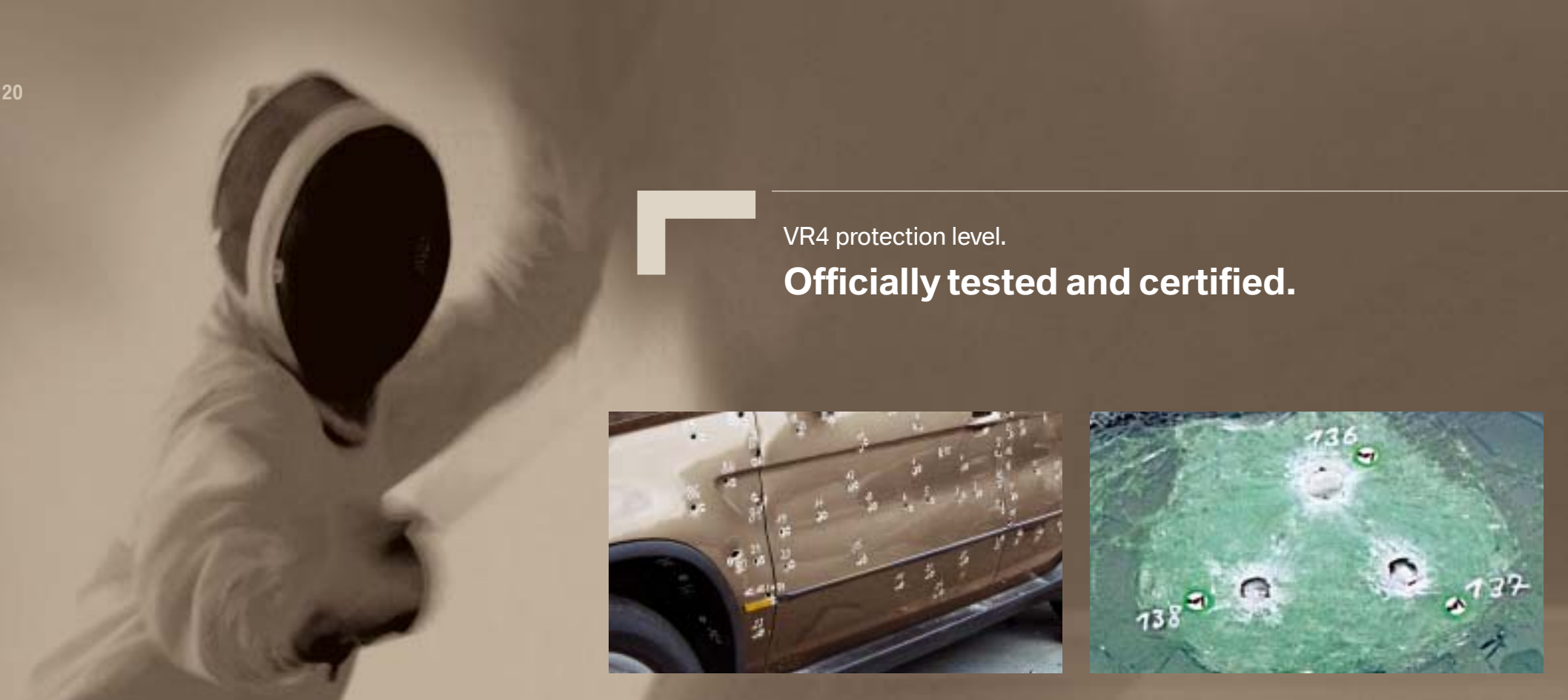
2.
Security VR4

BMW 530i Security
BMW 550i Security
BMW X5 4.4i Security

3.
High Security VR6/VR7

BMW 745Li High Security
BMW 760Li High Security





VR4 protection level.
Officially tested and certified.



Driving a BMW X5 Security conveys a feeling of safety and relaxation. The BMW X5 Security has been tested, verified and checked again and again at every stage of development, from the first design concept to volume production. The safety components for body, chassis and brakes have undergone in-vehicle testing, and the strength of the armour plating has been verified by ballistic tests.

The testing and certification of the entire vehicle was carried out by the State Ballistics Authority in Munich, Germany, in accordance with the DIN EN 1063 and DIN EN 1522/23-1 standards. Tests were based on the BRV 1999 “bullet-resistant vehicle” testing and certification guidelines for passenger cars and other vehicles.

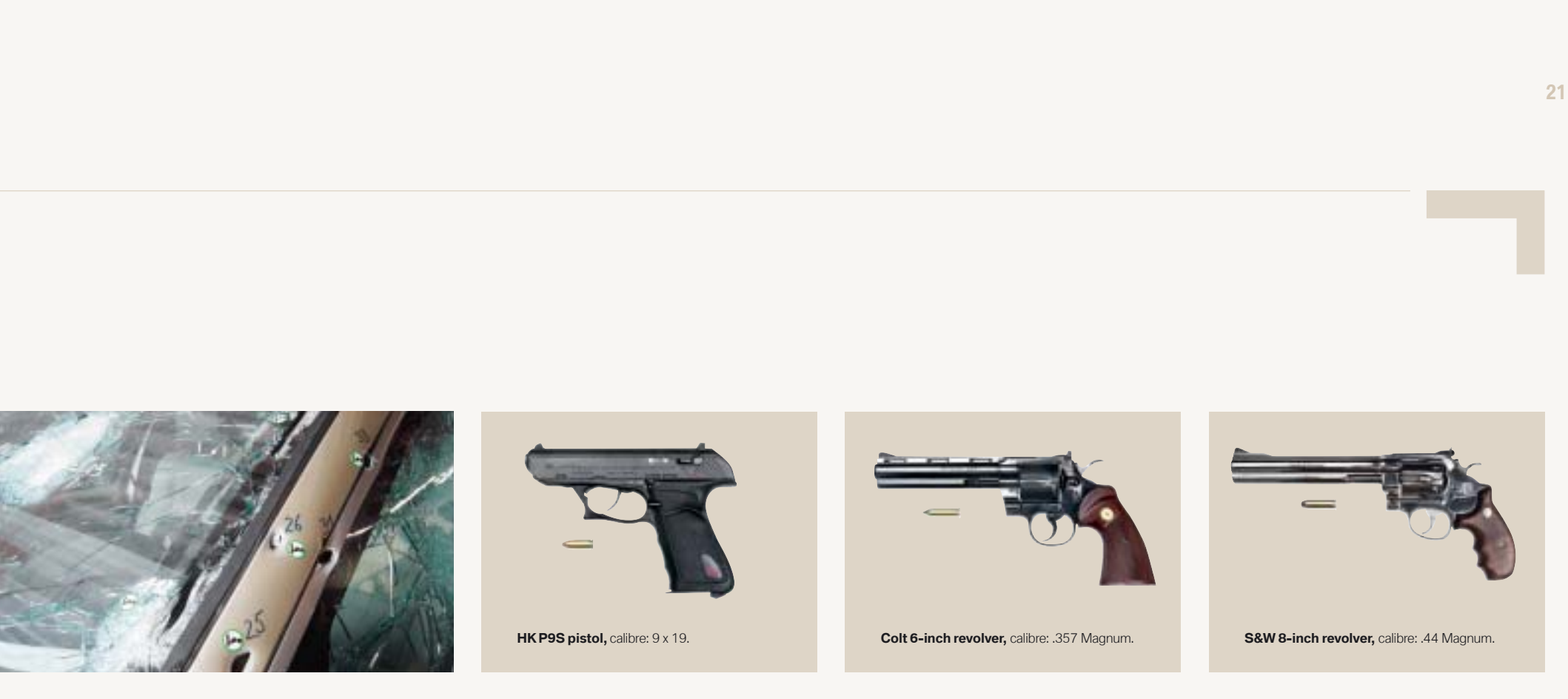
The BMW X5 Security has 21 mm safety glass, with a polycarbonate film on the inside. This glass protects occupants against attacks with blunt weapons and is bullet-resistant up to .44 Magnum calibre. The film prevents glass splinters from entering the cabin. Guns in ballistic tests are fired at a distance of 5 m from the car. The test programme also includes a set of three shots fired at a distance of 120 mm.



The entire occupant cell of the BMW X5 Security is bullet-resistant up to calibre .44 Magnum. In addition to safety glass in the windows, the doors, front bulkhead, rear and roof are fitted with heavy-duty fibre-composite armour. Roof pillars, joins and door frames are protected by high-strength steel. The fibre-composite mats also feature steel surrounds to provide additional stability along the edges.

In critical areas – like door and pillar joins – overlaps prevent bullets or shrapnel from entering the occupant cell. If desired, the underbody can also be protected against splinters that might ricochet off the ground.

The tests used impact angles of 45° and 90° as required by the BRV guideline. In order to get the most realistic results possible, our testers then went beyond the 1999 BRV guideline, using additional angles between 17° and 90° around the entire vehicle.



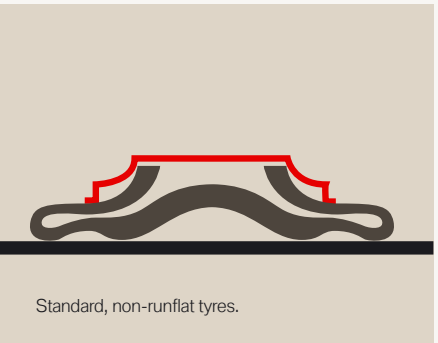
HK P9S pistol, calibre: 9 x 19.

Colt 6-inch revolver, calibre: .357 Magnum.

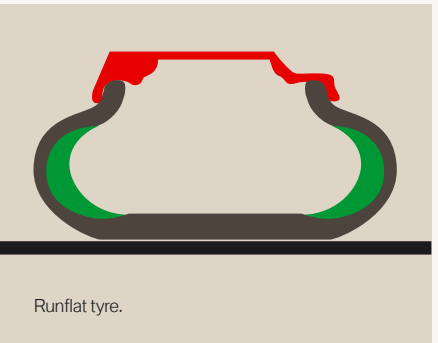
S&W 8-inch revolver, calibre: .44 Magnum.

Security equipment.

All-round protection ex works.



Standard, non-runflat tyres.



Runflat tyre.

Suspension.

The BMW X5 Security barely differs from the standard model in terms of stability, braking performance and steering characteristics. Thanks to comprehensive modifications, the springs, shock absorbers and brakes of all BMW Security models are precisely adapted to the increased vehicle weight. Dynamic performance and agility are almost unchanged – so the vehicle can be operated with the customary level of control, even on difficult surfaces.

Central locking.

The central locking is automatically activated once the BMW X5 Security has reached a speed of 4 km/h – whether it is going straight ahead or reversing.

Assault alarm system.

After you have pressed the button to activate the assault alarm system, both visual and acoustic signals will attract maximum attention to your car: in parallel with the hazard warning lights, a siren will sound for 30 seconds. The high beam and fog lights are made to flash in the same rhythm. In addition, all the windows will close and the central locking will close all the doors.

Intercom system.

An intercom system is installed to ensure safe communication with persons outside of the vehicle even when the windows and doors are closed.

Features to suit individual requirements and preparation for installation of additional equipment are optionally available.

Window lifts.

The front windows can be lowered by up to 50 per cent. This is sufficient for communication, using ticket machines in car parks, etc., but means that windows close much faster in an emergency. The rear side windows optionally support lowering. For maximum occupant protection, the windows of the X5 Security do not come with trap release.

Runflat tyres.

In case of a tyre puncture, the runflat tyres – provided as standard – allow the driver to drive on for another 50 km when fully laden. Safe handling remains assured up to a maximum speed of 80 km/h. The runflat indicator, also provided as standard, reports any loss of air pressure via a light in the dashboard, so drivers can adapt their driving style. The benefit: no need to change tyres until you're safe.

Reinforced side walls and a heat-resistant rubber mix ensure that the car can keep going even after a total loss of tyre pressure.

BMW Service Inclusive.

The most convenient way to greater service comfort.

BMW Service Inclusive guarantees you 100 per cent professional service, thanks to advanced diagnostics equipment, qualified personnel and the use of original BMW parts.

Would you like to focus on just the important things in life? With BMW Service Inclusive, you can. With the service options for your BMW X5, available at a one-off fixed price, you'll always be in control of your maintenance costs. Not just at home, but anywhere in the world. You can purchase our BMW Service Inclusive packages at participating BMW Dealers.

Benefits of BMW Service Inclusive at a glance:

- Reliable servicing at a one-off, fixed price
- BMW service quality and technical competence
- Guaranteed use of original BMW parts and state-of-the-art diagnostics equipment
- Optimum safety for your vehicle
- Service cost transparency

Options for your personal service package.

You can choose between

- Basic Service,
- Service Inclusive,
- Service plus Repair.

The package is valid for 5 years or 100,000 km.

This way, you can purchase the right package to match your personal driving profile.

Package cover ends once the defined duration or mileage has been completed, whichever comes first.

BMW Basic Service Inclusive. Simply get in the car and relax.

- Engine oil change including oil filter (without refill)
- Service/exchange of air filter, fuel filter, micro filter, spark plugs, brake fluid
- Vehicle check-up and standard service items according to service booklet

BMW Service Inclusive. Enjoy every mile of the way.

- Engine oil change including oil filter (without refill)
- Service/exchange of air filter, fuel filter, micro filter, spark plugs, brake fluid
- Brake pads front and rear
- Brake disks front and rear

- Windscreen wiper blades/rubbers as part of maintenance
- Vehicle check-up and standard service items according to service booklet

BMW Service + Repair Inclusive. Driving enjoyment and optimum comfort.

- Engine oil change including oil filter (without refill)
- Service/exchange of air filter, fuel filter, micro filter, spark plugs, brake fluid
- Brake pads front and rear
- Brake disks front and rear
- Windscreen wiper blades/rubbers as part of maintenance
- Vehicle check-up and standard service items according to service booklet
- Extension of the statutory warranty period for defects to the full term of the package.



Standard and optional equipment.

Security-specific equipment	
Electric window lifts, front, with “open” fingertip control	■
Electric window lifts, rear, with “open” fingertip control	□
Runflat tyres	■
Runflat indicator	■
Heated rear window	■
Heated windscreen and front side windows near the exterior mirrors	□
Intercom with assault alarm system	■
BMW Individual sun protection glazing, rear windows	■
Alarm system	□
Comfort features and optional equipment (excerpts)	
Auxiliary heating	□
CD changer, for up to 6 CDs	□
Comfort seats, front, electrically adjustable, with Memory function for driver’s seat	□
Fine-wood trim	■
Headlight washing system	■
HiFi system Professional	□
Interior/exterior mirrors with automatic anti-glare function	□
Leather upholstery	■
Light-alloy wheels star-spoke 131	■
Navigation system Professional	□
Park Distance Control (PDC)	□
Rear air conditioning	□
Seat heating for driver and front passenger	□
Seat heating for the rear seats	□
Servotronic	■
Steering wheel heating	□
TV function	□
Universal mobile phone preparation	□
Velour floor mats	□
Voice control system	□
Xenon headlights	■

Almost all the options for the standard model are available, so long as they do not interfere with the safety equipment.

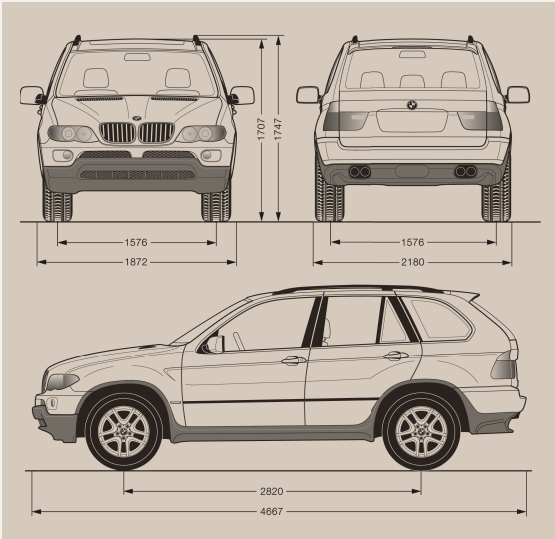
A list of regulator-specific optional equipment for the BMW X5 Security is available on request.

Features to suit individual requirements and preparation for installation of additional equipment are optionally available. Your BMW Dealer will be happy to assist you.

The models illustrated in this brochure show the specifications for the German market. In part, they include optional equipment and accessories not fitted as standard. In accordance with the specific legal requirements of other markets, alterations in models, standard and optional equipment, as described in this brochure, may occur. For detailed information, please contact your BMW Dealer. Subject to change in design and equipment. Subject to error.

Standard equipment ■
Optional equipment □

Specifications



- * The armoured areas (entire occupant cell) were tested in accordance with the DIN EN 1063 and DIN EN 1522/23-1 standards and based on the BRV 1999 “bullet-resistant vehicle” testing and certification guideline for passenger cars and other vehicles.
- ** Electronically limited.
- *** The figure quoted includes a 90 % tank filling, 68 kg for the driver and 7 kg for luggage. Unladen weight applies to vehicles with standard equipment. Optional equipment may increase this figure.

Specifications		
Model		X5 4.4i Security
Safety class*		VR4
Engine		
Cylinders/valves		8 / 4
Capacity	cc	4,398
Max. output/speed	kW (hp) / rpm	235 (320) / 6,100
Max. torque/speed	Nm / rpm	440 / 3,700
Transmission		6-speed automatic transmission
Performance		
Top speed**	km/h	210
Acceleration 0–100 km/h	sec	7.8
EU consumption		
Urban	l/100 km	18.7
Extra-urban	l/100 km	10.4
Combined	l/100 km	13.4
Tank capacity	(approx.) l	93
Weight		
Unladen, EU***	kg	2,515
Max. permissible weight	kg	2,810
Permitted load	kg	370
Seats		4
Wheels		
Tyre dimensions		255/55 R18 H M+S (all seasons) runflat tyres (RSC)
Wheel dimensions		8J x 18 SEH2
Material		light-alloy wheel
Electrical system		
Battery capacity	Ah	90
Alternator output	A/W	170 / 2,380



More about BMW

www.bmw.com
www.bmw-security-cars.com



**Sheer
Driving Pleasure**