

Make every road your own.

2001
Full Line Brochure



Contents

3 Series	2
5 Series	6
7 Series	8
X5	10
M Power	12
Z3	14
Z8	16
Motorcycles	18
Certified Series	20
BMW Financial Services	21
BMW Individual	22
BMW Lifestyle	23
BMW Customer Support	23
BMW Driver Training	24
Specifications	Inside Back Cover

Visit our web site at www.bmw.ca

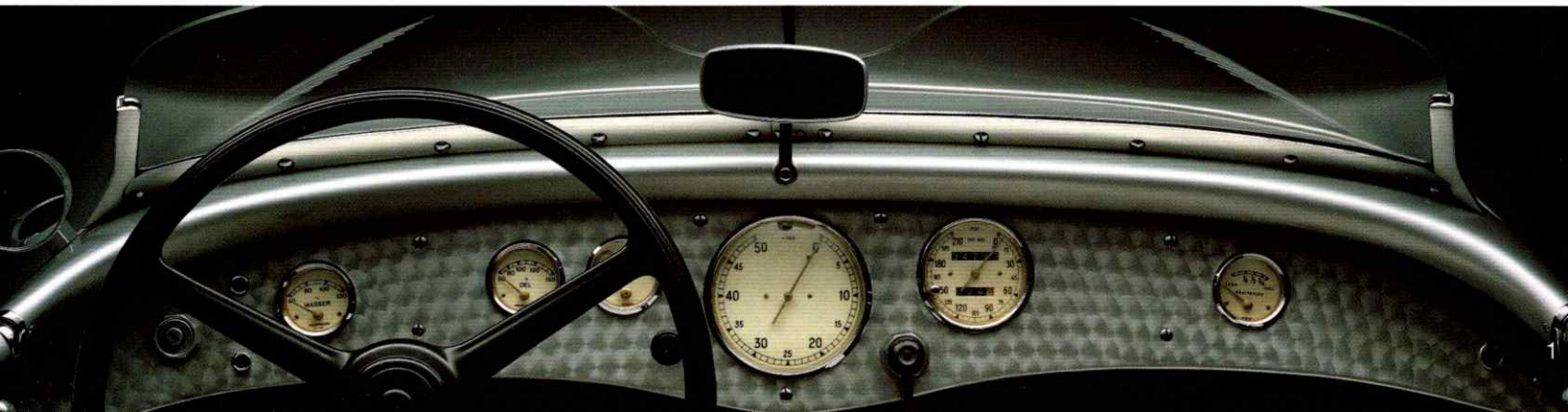


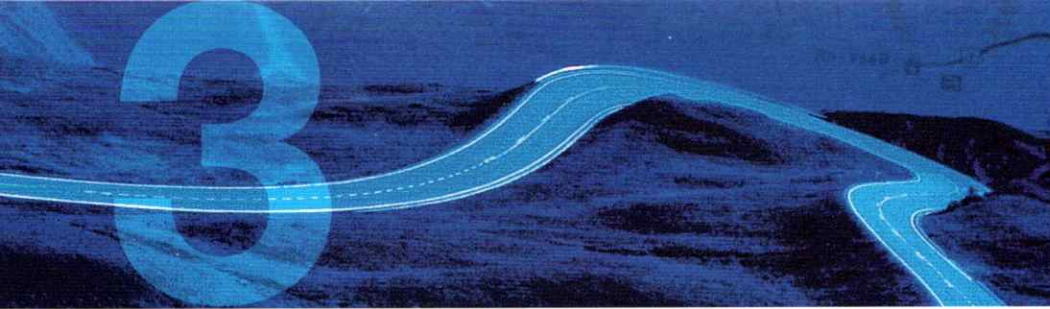
A High-Flying Legacy of Firsts

A never-ending dedication to automotive excellence may account for BMW's substantial success as one of Canada's most popular import luxury car lines. Yet its humble beginnings first took shape in 1916, with the unification of Gustav Otto Flugmaschinenfabrik München (Gustav Otto Munich Aircraft Works) and Rapp engine works, both located in Oberwiesefeld, north of Munich. In 1917, the company became Bayerische Motoren Werke (Bavarian Motor Works) or, as it is more commonly known, BMW. The famous white-and-blue quartered BMW badge represents the blades of a whirling propeller against a blue sky, as BMW was first known as a world-renowned manufacturer of liquid-cooled aircraft engines. This heritage of high-flying technology was not applied to car production until 1928, when BMW decided to complement its already exceptional line of motorcycles, which began production in 1923. Worldwide acclaim followed, and BMW has never looked back, continuing to make front-page news with its ongoing international racing victories and award-winning line of classic automobiles. It remains, to this day, the most focused and, for its size, the most successful of the world's carmakers. The very sight of the stylized propeller logo continues to send spirits soaring skyward.



All BMW cars can be recognized by their unmistakable radiator cover, a shape which has become known as the "kidney grille."





The 3 Series Sedan The Best Just Keeps on Getting Better

Repeatedly being named to the prestigious "10 Best" Cars* list for nine consecutive years is a unique distinction enjoyed by the BMW 3 Series sedan — an accomplishment unmatched by any other carmaker. In addition, the new BMW 3 Series offers an even greater selection of model choices than ever before, while it remains the gold standard of automotive perfection.

The new 3 Series sedan is, above all else, fun to drive. As a work of engineering art, it represents the purest expression of automotive design and technology. Style is what it's all about. The 3 Series offers unequalled levels of comfort, safety and pure driving joy for the most serious of drivers. Elegance meets agility in BMW's most successful series of all time, while offering one of the best values of any 6-cylinder luxury sedan.

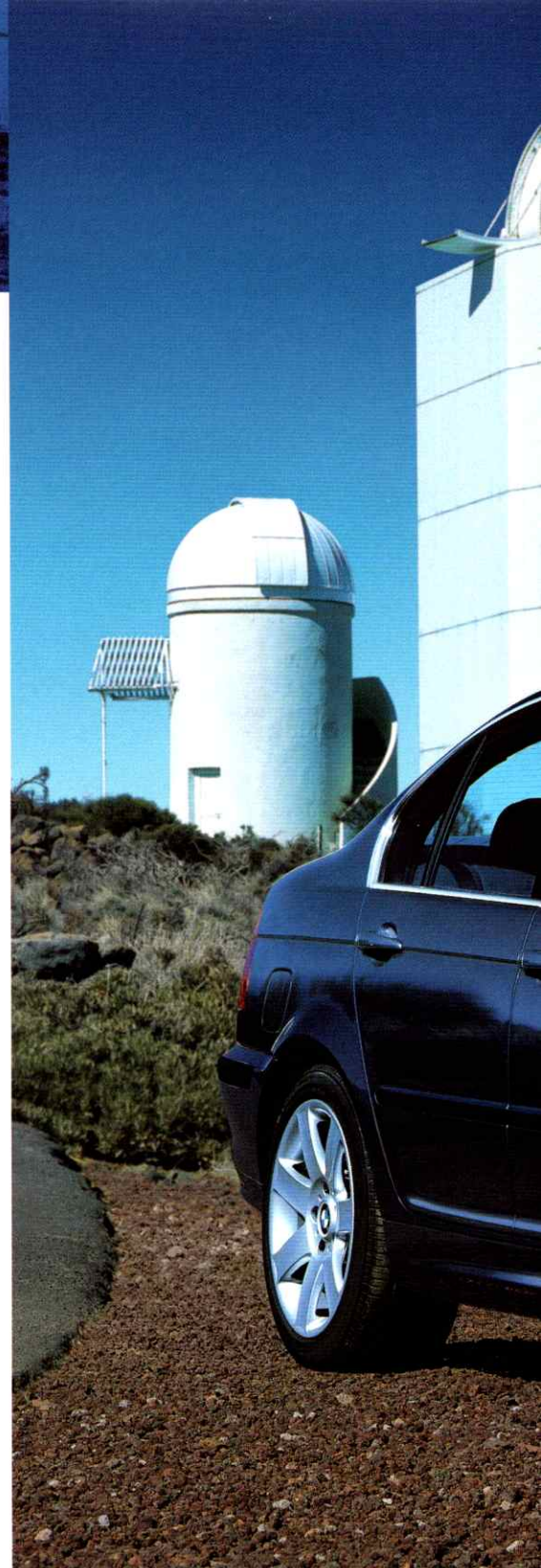
BMW's world-famous 6-cylinder DOHC, 24-valve engines include the new 2.2 litre, 2.5 litre and 3.0 litre versions. And, new for 2001, the optional Dynamic All-wheel Drive will be available on the 325xi/330xi models.

The BMW 3 Series also exemplifies the BMW commitment to safety: outstanding results in frontal offset crash tests performed on the 2000 BMW 3 Series sedan by the Insurance Institute for Highway Safety led it to rate it "Best Pick" over the competition. Credit such automotive firsts as BMW's Head Protection System (HPS)** — a life-saving discovery that prevents head injuries.

More choices? Refined performance? Good value? Fun to drive? Safe? Little wonder it's our most successful series of all time.

* Car & Driver "10 Best" Cars, Jan. '92, 2000.

** HPS is standard in all BMWs except cabriolets.





Dynamic All-wheel Drive: The Ultimate Advantage

330xi

Permanent all-wheel drive is back in the 325xi and 330xi sedans, offering exceptional traction regardless of the driving conditions.

The additional genius of DSC-X (Dynamic Stability Control) further heightens the aspects of safety and handling by monitoring individual wheel speed, steering wheel angle and vehicle direction. This sophisticated system compensates for oversteer or understeer by selectively applying the brakes and/or altering engine speed. BMW's Dynamic All-wheel Drive system constantly delivers 38% of the torque to the front wheels and 62% to the rear wheels. Add inclement weather or challenging driving conditions and the legendary BMW handling and performance is yours without compromise. Get all-wheel traction for a greater degree of driving security and serious peace of mind.





A Powerful Argument for Putting Your Foot Down

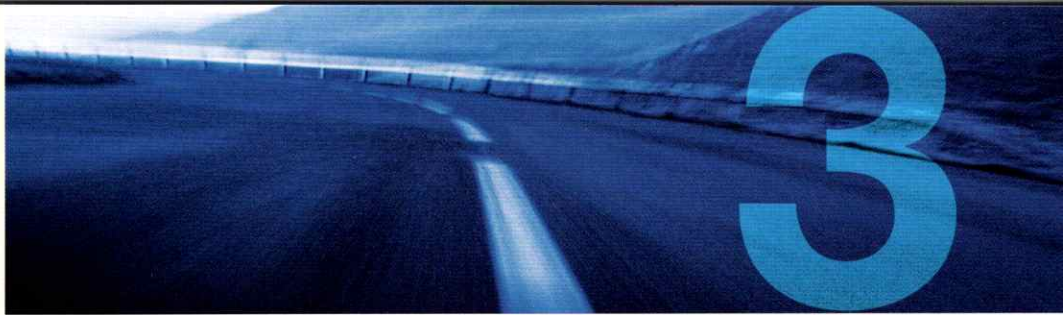
BMW has injected its already legendary inline 6-cylinder engines with even more excitement. Torque is increased and acceleration is beyond belief, thanks to advanced technologies. Double VANOS and a dual-resonance intake system helped give birth to an exceptionally broad torque curve for better response across the full acceleration range. From the robust 2.5 litre to the smooth and powerful 3.0 litre, both inline 6-cylinder powerplants continue BMW's legendary engineering heritage. The new 3.0 litre reaches 100 km/h in 6.8 seconds.* Yet in spite of such progress and despite this power, fuel efficiency has been further improved. This is so revolutionary that most 3.0 litre models even qualify for ULEV (Ultra-Low Emission Vehicle) standards.**



* Preliminary data – 330i sedan, 330Ci coupe with manual transmission.

** 330xi is certified as LEV (Low Emission Vehicle); all other 3.0 litre 3 Series models are certified as ULEV.





The 3 Series coupé and cabriolet The Road Goes on Forever... or So You'll Hope

Canada's love affair with the 3 Series continues with both the sporty coupé and the elegant cabriolet. BMW's legendary inline six, coupled with sport suspension* and a highly sophisticated design, sets the stage for an unforgettable driving experience. Its wide, low-stance suspension and near-perfect weight distribution empower these coupés with taut yet compliant handling. For the free-spirited set who prefer unlimited headroom, the BMW cabriolets combine elegance and sportiness in heart-racing proportions. State-of-the-art refinements, including Dynamic Stability Control for superlative handling and seat-integrated safety belts (cabriolet only), further underline the BMW commitment to safety. The cabriolet provides the added protection of steel-tube-reinforced windshield pillars. Speaking of innovation, when a cab's soft-top is raised, its redesigned trunk offers additional space and more room than you'd ever expect.

The comfort of optional 10-way power front seats and premium 10-speaker audio systems further enhance the overall 3 Series sensation. The choice of 5-speed manual or optional STEPTRONIC automatic offers you total command of the road. As for controlling your destiny? We're working on it.

* Standard on 325Ci and 330Ci.





The 5 Series Designing Cars for the Journey – Not the Destination

The 5 Series continues to offer its successful blend of strong visual appeal, overall dynamism and technological precision. Except that everything that has always thrilled you about BMW has been further enhanced in the new 5 Series models, elevating them to new plateaus of automotive excellence while inciting new extremes of driving passion. In addition, BMW has done the only thing possible to improve the overall 5 Series, by offering you greater choice. From bold new engine options to refinements in both exterior and interior appearance, the 5 Series can only continue to set new standards for responsive performance and overall sophistication.

The pure power of the 5 Series benefits directly from VANOS technology, which maximizes engine torque, fuel efficiency and emission control capabilities. From the 525i's spry 2.5 litre, inline 6-cylinder engine to the feisty furor of the 530i's new 3.0 litre and the pure muscle of the 540i's 4.4 litre, 32-valve V8, total driving exhilaration is but a green light away.

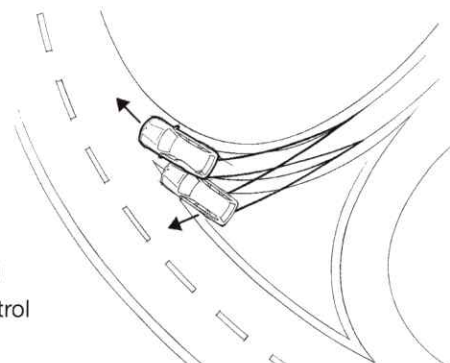
Discover the freedom to focus on nothing but the sheer joy of driving from within the sleek, ergonomically perfect cockpit of a 5 Series. A wealth of luxury features may be standard, but there's nothing standard about an environment so invigorating that every short trip wants to become a much longer journey.

BMW's uncompromising commitment to driver safety has resulted in such reassuring industry firsts as BMW's Head Protection System (HPS), which can potentially prevent fatal head injuries in situations where multiple impacts occur. In addition, front and optional rear-side airbags work with 3-point safety belts, an innovative door anchoring system and automatic belt-tensioners to help you to make the most of any unavoidable circumstance.



The Unerring Stability of DSC III

BMW's optional Dynamic Stability Control (DSC III) works with Automatic Stability Control + Traction to heighten the aspects of safety and handling. DSC III monitors wheel speed, steering wheel angle, yaw and vehicle speed. Should oversteer or understeer be detected (such as when entering a curve too quickly), DSC III responds by modulating engine power and applying individual front and/or rear brakes to keep your car under control and travelling in your intended direction.







The 7 Series

Timeless Elegance Meets the Lap of Luxury

Expand upon your understanding of what total luxury is with the BMW 7 Series, the world's finest sport-luxury automobile. Sports car-inspired handling and BMW high-performance merge with elegant styling and superb comfort for maximum driving enjoyment. Nothing has been left to your imagination, from the 740i and 740iL's mighty 282 hp V8 to the technical genius of the flagship 750iL's 326 hp V12 powerplant. Consider power seats that mould and adjust to the shape of your back. Cutting-edge technologies, including Dynamic Stability Control and Automatic Stability Control + Traction, make the most of any driving surface, while providing for unprecedented levels of driver control and safety. A high-function, ergonomically perfect, climate-controlled cockpit upholstered in rich leather and graced with a lengthy list of standard luxuries creates an experience without equal. Whatever your desire, the 7 Series meets and surpasses your every expectation of what the finest sport-luxury car should be.



Getting Lost Was Never So Much Fun

The BMW On-Board Navigation System has not only arrived but points you toward your destination. Elegant, versatile and easy to use, this highly advanced device makes getting there half the fun. This indispensable system displays accurate navigational information through the use of an on-board computer, audio systems and cellular phone controls with satellite assistance. It also has the facility to provide access to emergency and road-side services, Digital Sound Processing, automatic ventilation and security functions. Get immediate directions to hotels, preferred restaurants and your nearest BMW Retailer. You're going places, and the BMW On-Board Navigation System will help get you there.





The BMW X5. The Best Result in an Offset Crash Test...Ever

Active and passive safety has been at the heart of the X5's development, and it has become the benchmark for safety in off-road vehicles, due to its people-friendly attention to detail. In recent offset crash tests performed by the Institute for Highway Safety, the BMW X5 further distinguished itself by performing better than any other SUV ever tested. Based on the results, the X5 was rated "Best Pick" over the competition by the Institute. No less than 6 airbags protect the occupants in a major crash; the X5 demonstrated its safety potential with little damage to the entire occupant compartment and minor intrusion into the safety cage, compared to all others tested. When you invest in a BMW you are buying much more than a fine automobile. You are buying predictable peace of mind without equal.

*BMW X5 outperformed every SUV tested by the Insurance Institute for Highway Safety in an offset crash test at 65 km/h.



The X5 Sports Activity Vehicle Follow the Map...or Carve Out Your Own

When BMW decided to enter the SUV fray, it did so by — once again — redefining the category. The result was the X5 Sports Activity Vehicle (SAV), a high-performance vehicle built to enhance high-performance lifestyles. Traditional SUVs are more “utility” than “sport” and rather truck-like when it comes to handling. The X5 challenge was to deliver the same BMW-quality driving criteria one expects from a world-class sports sedan. Meeting the challenge of delivering BMW’s legacy for smooth, satisfying rides and superb on-road performance in a vehicle that would also be judged on its off-road capabilities was key. Little surprise that the X5 accomplishes both goals with typical BMW flair, while incorporating a wealth of luxurious features to further stimulate the experience — with or without the use of a road. Sharing the same 4.4 litre V8 as its 540i and 740i relatives, it accelerates from 0 to 100 km/h in under 8.0 seconds, while the 3.0i offers a similarly hearty 225 hp engine. Discover category leadership in the form of advanced traction technologies, including Automatic Stability Control (ASC), Dynamic Stability Control (DSC-X), Hill Descent Control (HDC) and Dynamic Brake Control (DBC), which contribute to keeping your wheels where you want them, improving overall handling for increased safety. Its unstoppable All-wheel Drive, exhaustive list of standard features, elegant wood trim, stunning ergonomics, power-adjustable leather seating (standard on the X5 4.4i) and benchmark approach to safety features distinguish this sporty X5 as it single-handedly injects heightened levels of comfort and handling into the entire “utility” category. But then, what else would you expect from any new BMW? Behold the first true luxury SAV — a very tough act to follow.





M Power A Marriage of Mind and Matter to the Mth Degree

"M" is the thirteenth — and middle — letter of the alphabet, a mysterious blend of all things superstitious and adventurous, acting as the centre of gravity and balance point for the alphabet, not to



mention BMW. M is pure automotive harmony, binding BMW's rich Motorsport prowess with the latest innovations in passenger car technology. All it takes is one test drive to realize that these truly may be the best automobiles to travel the planet. The M3 is the absolute pinnacle of automotive excellence. Evolution meets creationism in a performance not to be missed by any enthusiast. 333hp of superb 6-cylinder power. Laser-precise M sport suspension. Ferociously beautiful design. Overwhelming luxury. And more high-tech features, like its six-speed manual gear shift and variable warning segment on the tachometer. It's the passion for the experience that makes the M3 wonderful. It's the joy in driving that makes it a BMW.

BMW's racing heritage shines through in every glorious detail of the M Family. The M5, M coupé and M roadster — cars in which extreme performance and total luxury not only coexist but amaze each other. Beneath the beautifully sculpted curves of the M coupé and M roadster lie the muscles of raw BMW power. While lightning-quick M reflexes, classic styling, generous helpings of luxury and safety satisfy your every driving need. Relaxed at play, yet ready to launch at your slightest command, the M5 is arguably the best-performing sedan in the world. A totally balanced experience, with 394hp V-8 power countered by the supreme confidence provided by complete luxury and safety.

To drive M is to love M.





Top right: M3; left: M5; above: M roadster; right: M coupé





The Z3 roadster

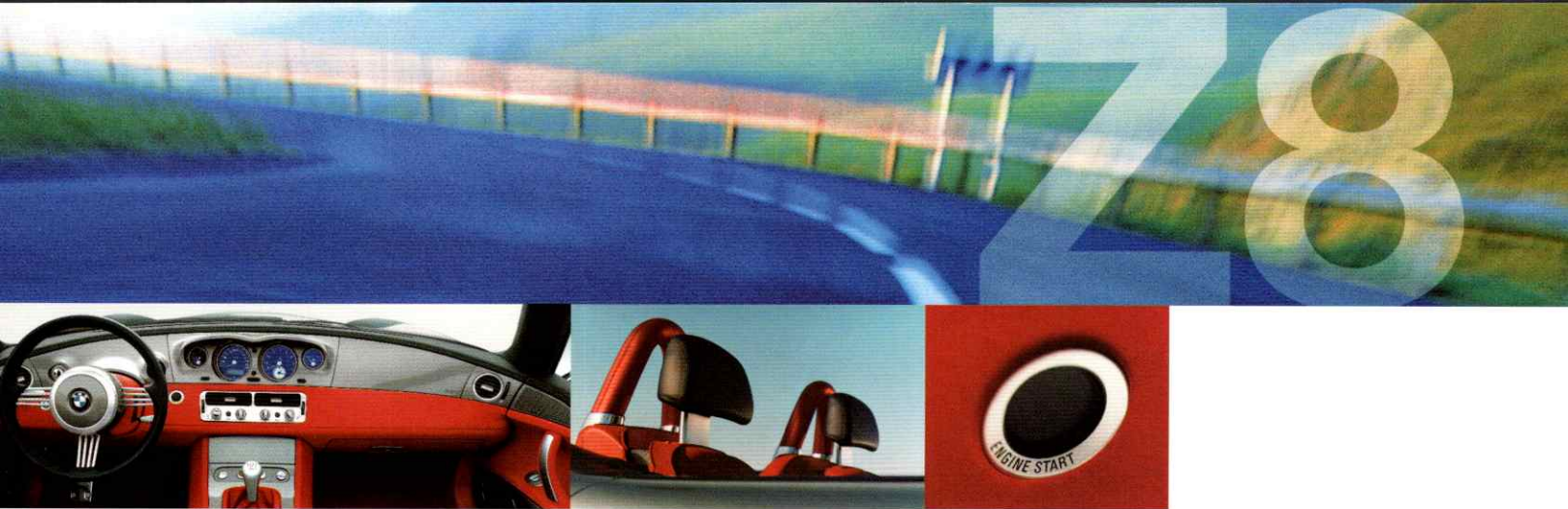
Find Your Own Road. Then Put It Behind You.

The Z3 roadster is the stuff that legends are made of. BMW's original roadster tradition was born in the '30s, and its heritage of representing the purest expression of motoring passion has never been compromised. The Z3 further enhances the legacy of the open two-seater by remaining loyal to its distinctive characteristics — its long, sleek hood, soft top and short tail remain true to the original design, and its powerful

front engine and rear-wheel drive provide maximum response, efficiency and attitude. The sensation is all thrills, in a totally responsive drop-top that quickly shortens the distance between the road and your inner self, setting the stage for an addiction whose only remedy is ownership. From its potent 2.5 litre inline 6-cylinder to the tenacious 3.0 litre engine, the Z3 is every inch a thoroughbred. Not only will the stresses of everyday life take leave of your body, you will emerge refreshed and rejuvenated by a distinctively real, open-air experience that will forever spoil you for any other driving solution.

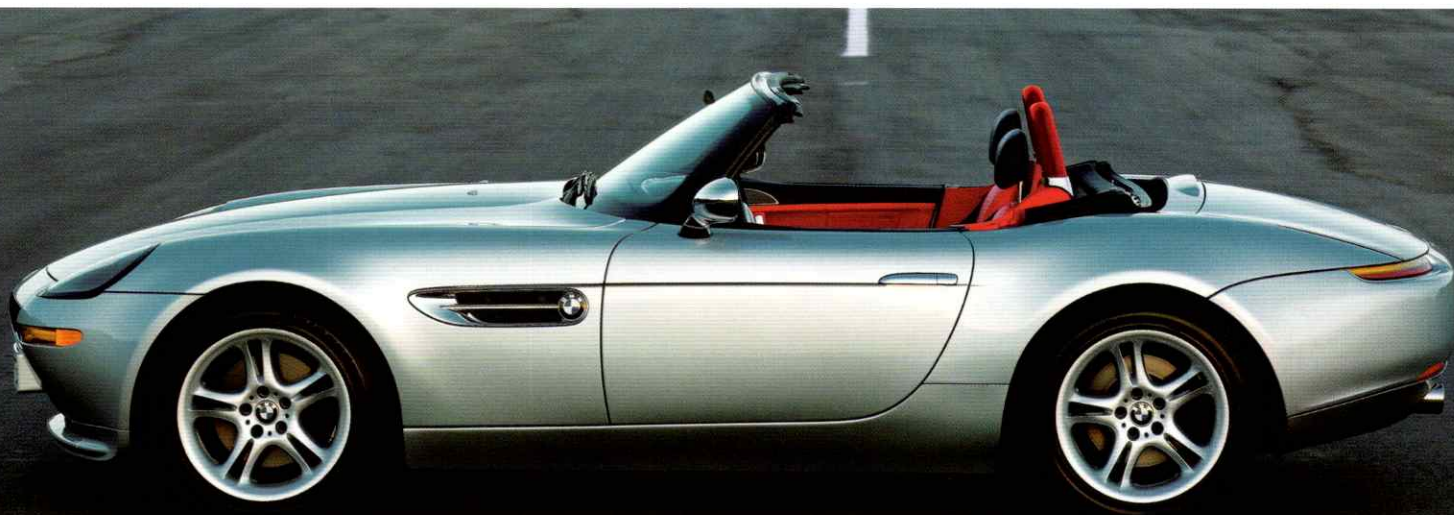






The Z8 Moderation in All Things...But One

The Z8 is the epitome of BMW's promise to provide sheer driving pleasure. Your wildest fantasy comes true. The Z8 is the fastest production BMW available, combining a 394 hp engine with an aluminum spaceframe — the ultimate marriage of flawless craftsmanship to advanced engineering. It's as much a stunning work of art as it is a breathtaking study in dynamic mobility, unapologetic in its no-compromise approach to automotive perfection. The Z8 is the evolution of the 1955 507 Roadster — a critic's darling of an automobile that "seemed to be moving even when it was standing still." The Z8's 8-cylinder, 5 litre, racing-bred M powerplant, coupled with a 6-speed manual transmission, clocks 0–100 km/h in under 5 seconds. Sink deep in rich Nappa leather, surrounded by superlative Harman-Kardon sound, body-coloured surfaces and aluminum controls. Its sculpted exterior is fabricated from alternative materials that shave weight to favour performance. Even its standard features are out of the ordinary: Dynamic Stability Control, run-flat tires and On-Board Navigation system. The ultimate sports car has more than arrived...it's landed.



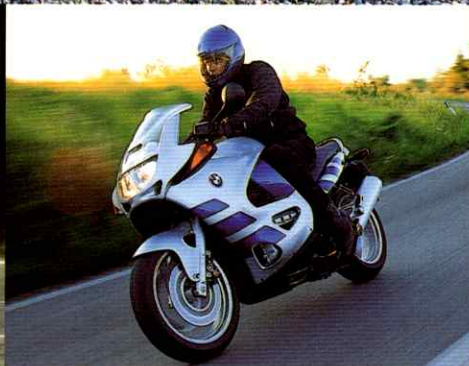


Motorcycles

Two-Wheeled Freedom Flyers

BMW's 79-year history of creating the world's most respected and celebrated motorcycles is rich with colour and accomplishment. At the heart of the experience lie the sense of freedom achieved on two wheels and the lifelong quest for the perfect ride. Unlike a car, a motorcycle is "ridden" and not "driven," and the sense of unity with the natural elements delivered by this extremely active form of transport is at the soul of its universal appeal. Catch the fever of seeing the road from a BMW motorcycle — each design abundant in character, highly individual and the product of deep-seated vision and state-of-the-art technology. From the Cruiser to the Roadster, the Touring to the Enduro, BMW's superior quality and superb handling unlocks your dreams and releases your secret self on a grand scale.

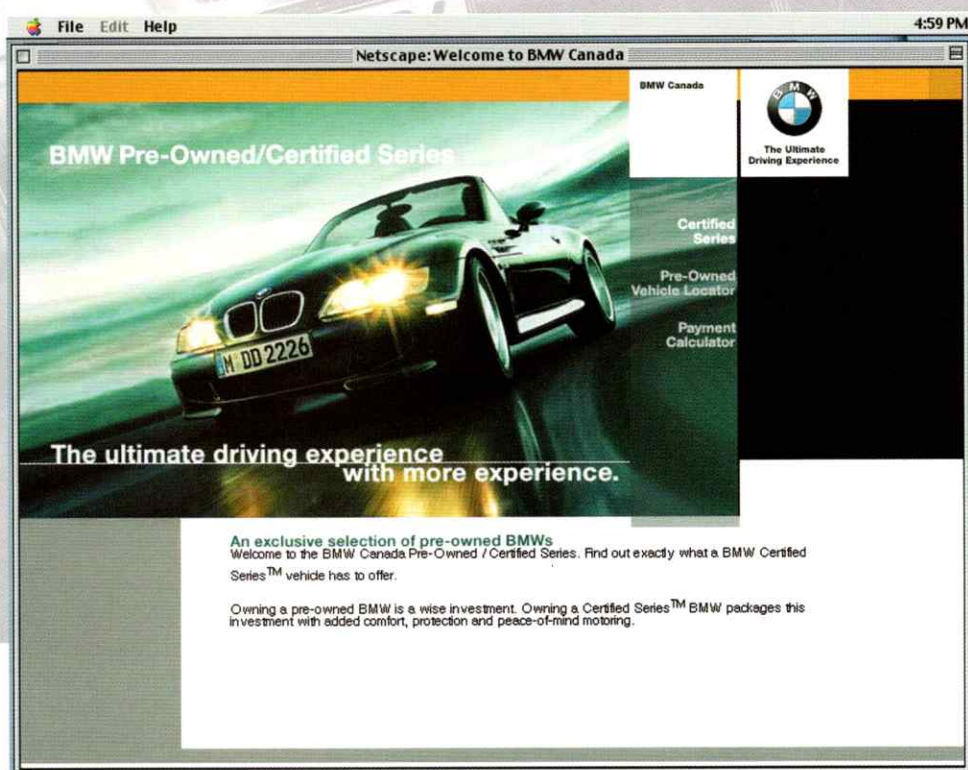




Top: R1200C Independent; from left to right: R1150R, K1200LT, F650GS, R1100S, K1200RS, and R1150GS.

BMW Certified Series™

- Exclusive selection of pre-owned BMWs
- 5 day/300 km money-back guarantee
- Exhaustive 87-point checklist
- Certified Series™ Protection Plan for up to 6 years or 120,000 kilometres
- 24-hour roadside assistance



Search for a pre-owned BMW from the combined inventories of BMW Retailers nationwide – updated daily.

www.bmw.ca

An exclusive selection of pre-owned BMWs

To anyone who has ever made the investment in a BMW, it comes as no surprise that each one is renowned for its ability to hold its value. That's because, quite simply, quality lasts. Which is good news for new buyers and good news for buyers of pre-owned BMW Certified Series™ created to celebrate the unmatched quality of the BMW experience "down the road." Pre-owned BMWs are only awarded the BMW Certified Series™ title upon passing a rigorous and meticulous 87-point inspection program. An up to 6 year or 120,000 km Protection Plan further demonstrates BMW's confidence in every aspect of each high-performance vehicle that bears its name and carries the BMW Certified Series™ designation. And, if that weren't enough, a full 5 day/300 km money-back guarantee is in place for the complete peace of mind that is built into timeless quality. Available exclusively from your BMW Retailer.



BMW Financial Services

Financing driven by you™

BMW Financial Services Canada is committed to providing you with the highest level of service possible. The BMW philosophy states that The Ultimate Driving Experience™ is not only a reflection of BMW craftsmanship, superior handling and undeniable comfort but also a part of your experience with BMW's innovative and comprehensive retail financing and leasing programs. New and pre-owned programs with Low Kilometre option, Flexible lease, GAP (Guaranteed Asset Protection) coverage and OwnersChoice™ finance will allow you to benefit from the flexibility, convenience and expertise that BMW Financial Services Canada offers. Call now. Bilingual representatives are ready to assist you.

Toll-Free: 1-800-3000-BMW, Monday to Friday, 9 am – 8 pm, EST

www.finance.bmw.ca



BMW Individual

Live the Life, Look the Part

Your BMW already fits your lifestyle perfectly. Yet it can be further customized to your specific tastes through a wide selection of options and accessories. After all, shouldn't The Ultimate Driving Experience™ reflect your personality and sense of style? Choose from a wide selection of exquisite colours, fine materials, paintwork, leather, wood and technical components to better reflect your distinctive personality. Whether you lean towards a sense of elegance or something a little more sporty, look to BMW to satisfy the most discriminating of individual tastes.



BMW Lifestyle

The Statement That Makes Itself



Whether you're looking to accessorize yourself or your automobile, or are simply searching for a truly unique gift, BMW has it covered.

From Swiss-movement timepieces to BMW miniatures, custom-fit roof rack systems to alloy wheels, the possibilities are endless. And for that certain someone who has everything, or those who shop for themselves, BMW Lifestyle Gift Certificates leave the choice

to them. From gift-giving to individual statements of taste and style that say so much about you, BMW has your answer. Please consult your BMW Retailer, who will be happy to assist you, or visit www.bmw.ca.



BMW Customer Support

Carry the Card That BMW Built



You make the call and BMW is ready to answer, 24 hours a day, 7 days a week. Because your BMW Service Card entitles you to the round-the-clock respect that you deserve, and should you need roadside assistance for any situation you encounter, the solution is but a phone call away.

For travel planning, accident assistance or even the location of your nearest BMW Retailer, your call is BMW's key to serving you better — from anywhere in North America. Get the help you need when you need it. It's all part of The Ultimate Driving Experience,[™] and it's built into every BMW.





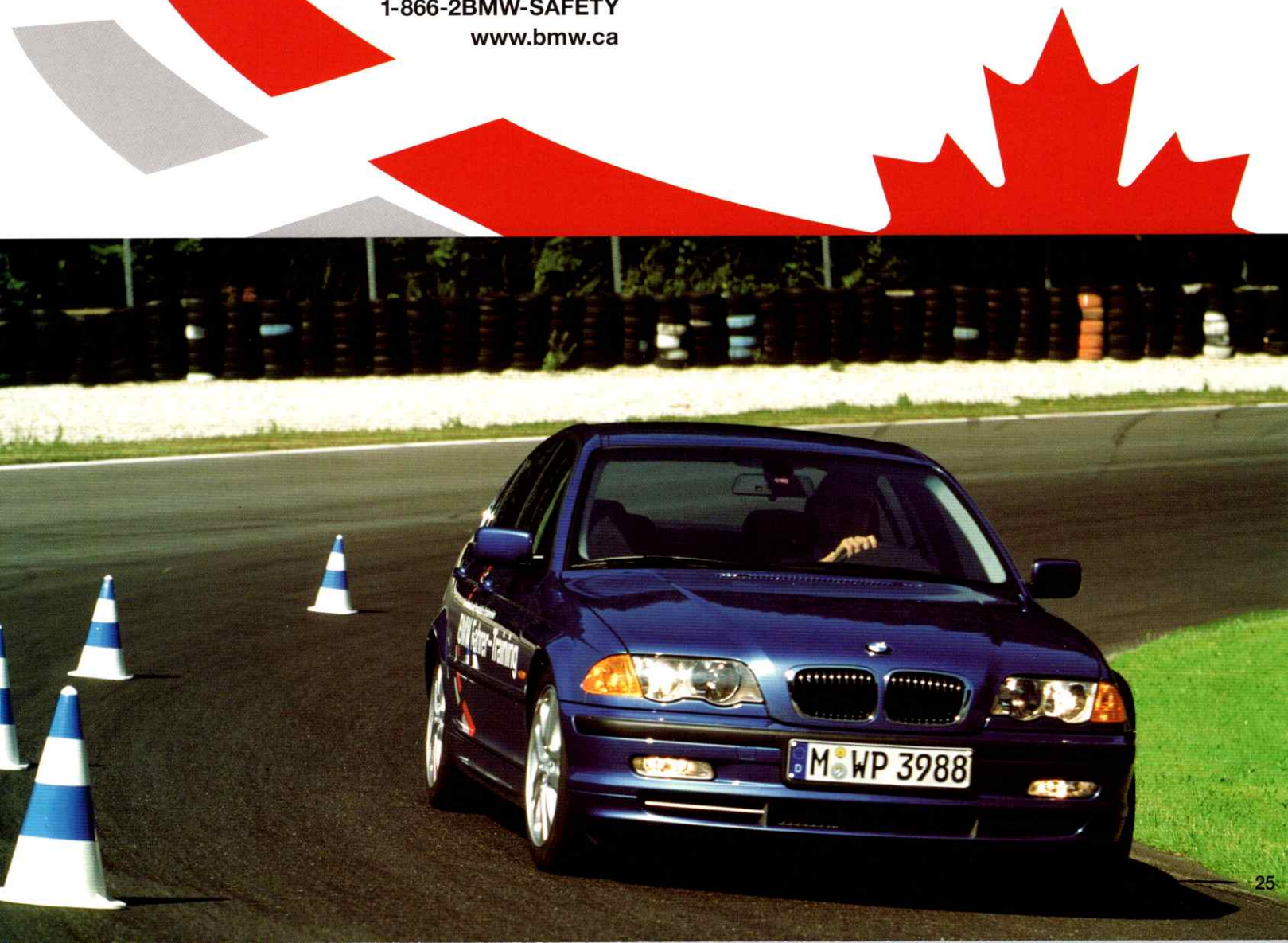


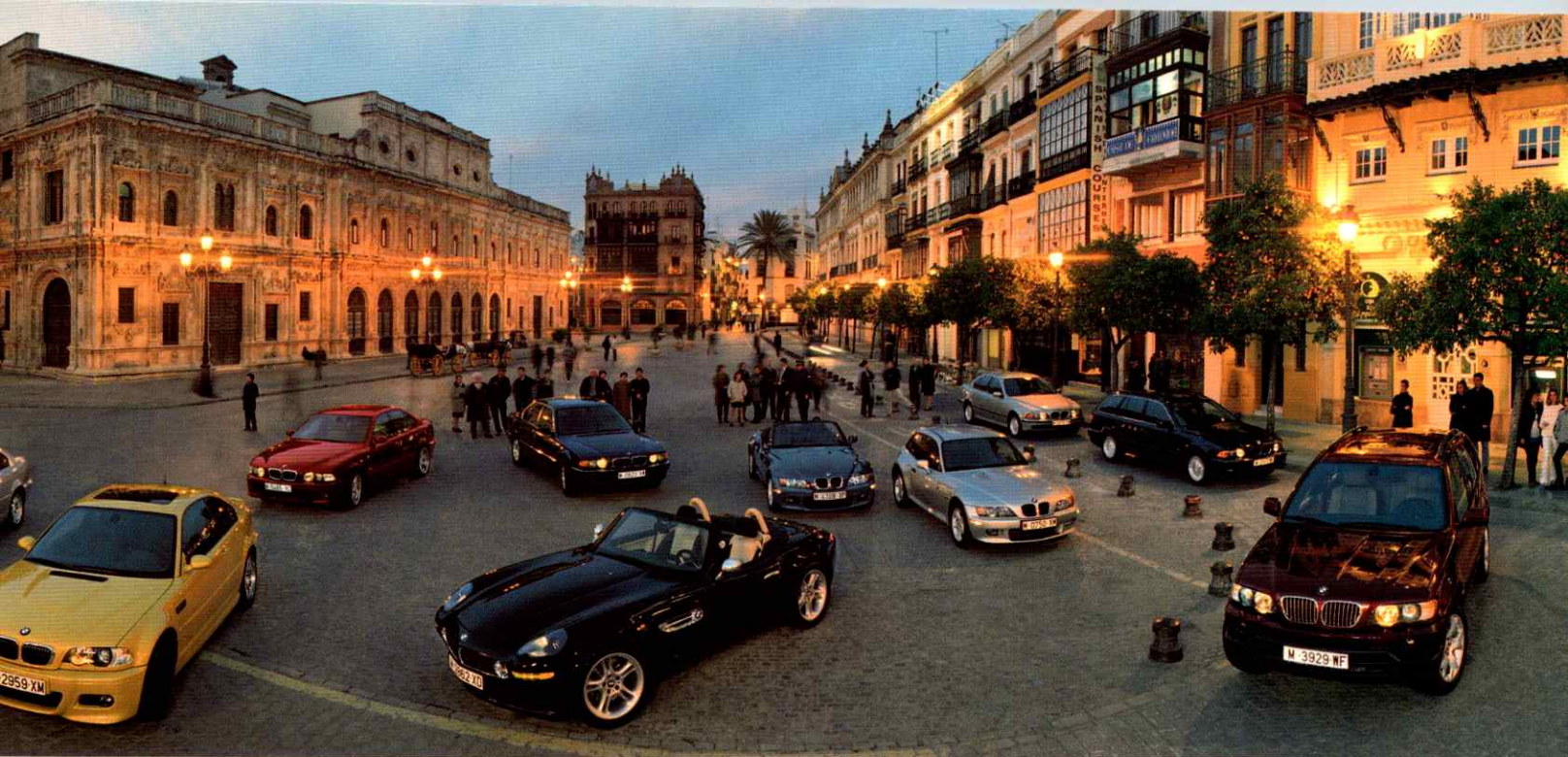
BMW Driver Training

One Classroom Where Everyone Wants to Sit Up Front

Driving is something that BMW owners live for. And when you get behind the wheel of a BMW with the potential to deliver The Ultimate Driving Experience,[™] the thrill is directly proportional to the driver's skill. Which is why BMW is the first luxury carmaker in Canada to have developed a nationwide, leading-edge Driver Training Program, dedicated to enhancing the natural skills of every driver while teaching the life-saving benefits of active and passive safety. Interest in the program, open to both seasoned pros and beginners, BMW owners and non-BMW owners alike, can be expressed through www.bmw.ca. And it just might be the perfect gift for the driver who aspires to more. BMW is known for providing drivers with The Ultimate Driving Experience.[™] Now, with the help of professionally trained BMW instructors, it is known for going the extra mile.

1-866-2BMW-SAFETY
www.bmw.ca





525i

Key features:

Glass sunroof
Xenon lights
In-dash single CD
Heated seats
Electric seats with driver memory
Heated steering wheel
Roof rails
16" Cross spoke alloy wheels
Engine: 2.5 litre DOHC I-6, 24V with Double VANOS
Horsepower: 184@6000
Torque: 175@3500

Wheelbase: 2830mm
Overall length: 4805mm
Curb weight: 1670kg
Acceleration: 0-100km/h: 8.8 sec

540i

Key features, in addition to or instead of items featured on the 525i:

Automatic transmission with STEPTRONIC
Vavona wood trim
Montana leather interior
Comfort seats
Self-levelling rear suspension
Dynamic Stability Control (DSC III)
16" Radial styling alloy wheels
Engine: 4.4 litre DOHC V8, 32V with VANOS
Horsepower: 282@5400
Torque: 324@3600

Wheelbase: 2830mm
Overall length: 4805mm
Curb weight: 1840kg
Acceleration: 0-100km/h: 6.3 sec

7 SERIES

740iA

Key features:

Automatic transmission with STEPTRONIC
Heated steering wheel
Glass sunroof
Comfort seats
Heated front and rear seats
Montana leather interior
Xenon headlights
16" Ellipsoid alloy wheels
Engine: 4.4 litre DOHC V8, 32V with VANOS
Horsepower: 282@5400
Torque: 324@3600

Wheelbase: 2930mm
Overall length: 4984mm
Curb weight: 1930kg
Acceleration: 0-100 km/h: 7.3 sec

740iLA

Key features, in addition to or instead of items featured on the 740iA:

Self-levelling rear suspension
Optional electric rear seats
16" Radial spoke alloy wheels
Engine: 4.4 litre DOHC V8, 32V with VANOS
Horsepower: 282@5400
Torque: 324@3600

Wheelbase: 3070mm
Overall length: 5124mm
Curb weight: 1945kg
Acceleration: 0-100 km/h: 7.3 sec

750iLA

Selected features, in addition to or instead of items featured on the 740iLA:

Auto dimming interior and exterior mirrors
Park distance control
Extended Montana leather interior
CPT7000 Fully Integrated Star Tac digital cellular telephone
Audiophile sound system with DSP
16" Radial spoke alloy wheels

Engine: 5.4 litre SOHC V12, 24V
Horsepower: 322@5000
Torque: 361@3900

Wheelbase: 3070mm
Overall length: 5124mm
Curb weight: 2085kg
Acceleration: 0-100 km/h: 6.8 sec

X5

X5 3.0i

Key features:

Electric driver seat
Dynamic Stability Control (DSC-X)
Heated seats
Xenon headlights
Automatic climate control
In-dash single CD
Premium sound system
17" 5 Spoke styling alloy wheels

Engine: 3.0 litre DOHC I-6, 24V with Double VANOS
Horsepower: 225@5900
Torque: 214@3500

Wheelbase: 2820mm
Overall length: 4667mm
Curb weight: 2050kg
Acceleration: 0-100 km/h: 8.3 sec

X5 4.4i

Selected features, in addition to or instead of items featured on the X5 3.0i:

Glass sunroof
Electric passenger seat
Poplar wood trim
18" 5 Spoke styling alloy wheels
Engine: 4.4 litre DOHC V8, 32V with VANOS
Horsepower: 282@5400
Torque: 324@3600

Wheelbase: 2820mm
Overall length: 4667mm
Curb weight: 2175kg
Acceleration: 0-100 km/h: 7.9 sec (est.)

ROADSTERS

Z3 2.5

Key features:

Side airbags
Electrically adjustable seats
Air conditioning
In-dash single CD
M sports steering wheel
16" Star spoke alloy wheels

Engine: 2.5 litre DOHC I-6, 24V with Double VANOS
Horsepower: 184@6000
Torque: 175@3500

Wheelbase: 2446mm
Overall length: 4050mm
Curb weight: 1315kg
Acceleration: 0-100 km/h: 7.5 sec

Z3 3.0

Selected features, in addition to or instead of items featured on the Z3 2.5:

Electro-mechanical softtop
Heated seats
Leather interior
Harman-Kardon sound system
17" Radial styling alloy wheels

Engine: 3.0 litre DOHC I-6, 24V with Double VANOS
Horsepower: 225@5500
Torque: 214@3500

Wheelbase: 2446mm
Overall length: 4050mm
Curb weight: 1320kg
Acceleration: 0-100 km/h: 6.4 sec

Z8

Key features:

6-speed manual transmission
Dynamic Stability Control (DSC III)
Navigation system
Harman-Kardon sound system with 6-disc CD changer
Full Nappa leather interior
Electronically adjustable heated sport seats
Automatic dimming rear view mirror
Headlight cleaning system
Hardtop
18" Light alloy wheels

Engine: 5.0 litre DOHC V8, 32V with Double VANOS
Horsepower: 394@6600
Torque: 368@3800

Wheelbase: 2505mm
Overall length: 4400mm
Curb weight: 1615kg
Acceleration: 0-100 km/h: <5.0 sec

Sole Canadian Importer: BMW Canada Inc., Whitby, Ontario L1N 6K9. All illustrations and specifications contained in this piece are based on the latest product information available at the time of printing. BMW reserves the right to make changes at any time, without notice, in colours, materials, equipment, specifications and models. BMW may, subject to legal requirements, determine the Model Year designation of its vehicles. The Model Year designation on any particular model may be longer or shorter than 12 months. Some vehicles pictured may contain non-Canadian equipment. Some models may be shown with optional equipment. Further information can be obtained from your BMW Retailer. © BMW Canada Inc., "BMW"; the BMW logo and "The Ultimate Driving Experience" are trademarks of BMW AG, used under licence by BMW Canada Inc.

Visit our web site at www.bmw.ca



3 SERIES

320i

Key features:

Air conditioning
In-dash single CD
15" Steel wheels with covers

Engine: 2.2 litre DOHC I-6, 24V with Double VANOS
Horsepower: 168@6250
Torque: 155@3500

Wheelbase: 2725mm
Overall length: 4471mm
Curb weight: 1440kg
Acceleration: 0-100km/h: 8.7 sec

325i

Key features, in addition to or instead of items featured on the 320i:

Foglights
Headlamp washers
Xenon headlights
Multifunction steering wheel including cruise control
Optional All-wheel Drive
16" Star spoke alloy wheels

Engine: 2.5 litre DOHC I-6, 24V with Double VANOS
Horsepower: 184@6000
Torque: 175@3500

Wheelbase: 2725mm
Overall length: 4471mm
Curb weight: 1470kg
Acceleration: 0-100km/h: 7.6 sec

330i

Key features, in addition to or instead of items featured on the 325i:

Glass sunroof
Heated seats
Optional All-wheel Drive
17" Radial styling alloy wheels

Engine: 3.0 litre DOHC I-6, 24V with Double VANOS
Horsepower: 225@5900
Torque: 214@3500

Wheelbase: 2725mm
Overall length: 4471mm
Curb weight: 1505kg
Acceleration: 0-100km/h: 6.8 sec

325Ci coupé

Key features:

Sport suspension
Multifunction sports steering wheel
Xenon lights
Headlamp washers
In-dash single CD
Foglights
On-board computer
16" Star spoke alloy wheels

Engine: 2.5 litre DOHC I-6, 24V with Double VANOS
Horsepower: 184@6000
Torque: 175@3500

Wheelbase: 2725mm
Overall length: 4488mm
Curb weight: 1475kg
Acceleration: 0-100km/h: 7.6 sec

330Ci coupé

Key features, in addition to or instead of items featured on the 325Ci coupé:

Glass sunroof
Heated seats
17" Star spoke alloy wheels

Engine: 3.0 litre DOHC I-6, 24V with Double VANOS
Horsepower: 225@5900
Torque: 214@3500

Wheelbase: 2725mm
Overall length: 4488mm
Curb weight: 1520kg
Acceleration: 0-100km/h: 6.8 sec

M3 coupé

Key features:

Alarm
6-speed manual transmission
Glass sunroof
Front centre armrest
Heated seats
Heated washer jets and headlamp cleaning
Xenon headlights
In-dash single CD
Harman-Kardon sound system
Nappa leather interior
18" M Styling alloy wheels

Engine: 3.2 litre DOHC I-6, 24V with Double VANOS
Horsepower: 333@7900
Torque: 262@4900

Wheelbase: 2725mm
Overall length: 4492mm
Curb weight: 1550kg (est.)
Acceleration: 0-100km/h: 5.2 sec (est.)

325Ci cabriolet

Key features:

Heated seats
Premium sound system
Electrically adjustable seats
Foglights
Xenon headlights
Air conditioning
In-dash single CD
16" Star spoke alloy wheels

Engine: 2.5 litre DOHC I-6, 24V with Double VANOS
Horsepower: 184@6000
Torque: 175@3500

Wheelbase: 2725mm
Overall length: 4488mm
Curb weight: 1615kg
Acceleration: 0-100km/h: 8.3 sec

330Ci cabriolet

Key features, in addition to or instead of items featured on the 325Ci cabriolet:

Electric convertible top
Harman-Kardon sound system
Montana leather interior
17" Star spoke alloy wheels

Engine: 3.0 litre DOHC I-6, 24V with Double VANOS
Horsepower: 225@5900
Torque: 214@3500

Wheelbase: 2725mm
Overall length: 4488mm
Curb weight: 1645kg
Acceleration: 0-100km/h: 7.5 sec

5 SERIES

525i

Key features:

Heated steering wheel
Glass sunroof
Heated seats
Electric seats with driver memory
Xenon headlights
In-dash single CD
16" Cross spoke alloy wheels

Engine: 2.5 litre DOHC I-6, 24V with Double VANOS
Horsepower: 184@6000
Torque: 175@3500

Wheelbase: 2830mm
Overall length: 4775mm
Curb weight: 1565kg
Acceleration: 0-100km/h: 8.5 sec

530i

Key features, in addition to or instead of items featured on the 525i:

Vavona wood trim
Montana leather interior
16" Parallel spoke alloy wheels

Engine: 3.0 litre DOHC I-6, 24V with Double VANOS
Horsepower: 225@5900
Torque: 214@3500

Wheelbase: 2830mm
Overall length: 4775mm
Curb weight: 1585kg
Acceleration: 0-100km/h: 7.1 sec

540i

Key features, in addition to or instead of items featured on the 530i:

Comfort seats
Dynamic Stability Control (DSC III)
16" Radial styling alloy wheels

Engine: 4.4 litre DOHC V8, 32V with VANOS
Horsepower: 282@5400
Torque: 324@3600

Wheelbase: 2830mm
Overall length: 4775mm
Curb weight: 1700kg
Acceleration: 0-100km/h: 6.0 sec

M5

Key features:

Tire pressure control
Glass sunroof
Electric rear blind
Park distance control
Navigation system
Audiophile sound system with DSP
Nappa leather interior
18" M Parallel styling alloy wheels

Engine: 5.0 litre DOHC V8, 32V with Double VANOS
Horsepower: 394@6600
Torque: 368@3800

Wheelbase: 2830mm
Overall length: 4784mm
Curb weight: 1825kg
Acceleration: 0-100 km/h: 5.3 sec



More about BMW

www.bmw.ca
1-800-667-6679



The Ultimate
Driving Experience.™