

THE NEW
iX3





CHANGE

CAN SOMETIMES SEEM
LIKE A CHALLENGE.

That's why at BMW i,
we believe in overcoming obstacles.

We have been pioneering electric
mobility for the past ten years –
and we will continue to be
at the forefront of positive change
in the future, too. To do that,
we want to discuss our ideas with you.
We want to embrace change together.

Because we believe
in the endless possibilities
of shaping the future and we believe
there are a lot of great reasons
to take that next step.

Let's take it together.
Let's make the future we want to live in
become reality.

LET'S MAKE CHANGE
HAPPEN.



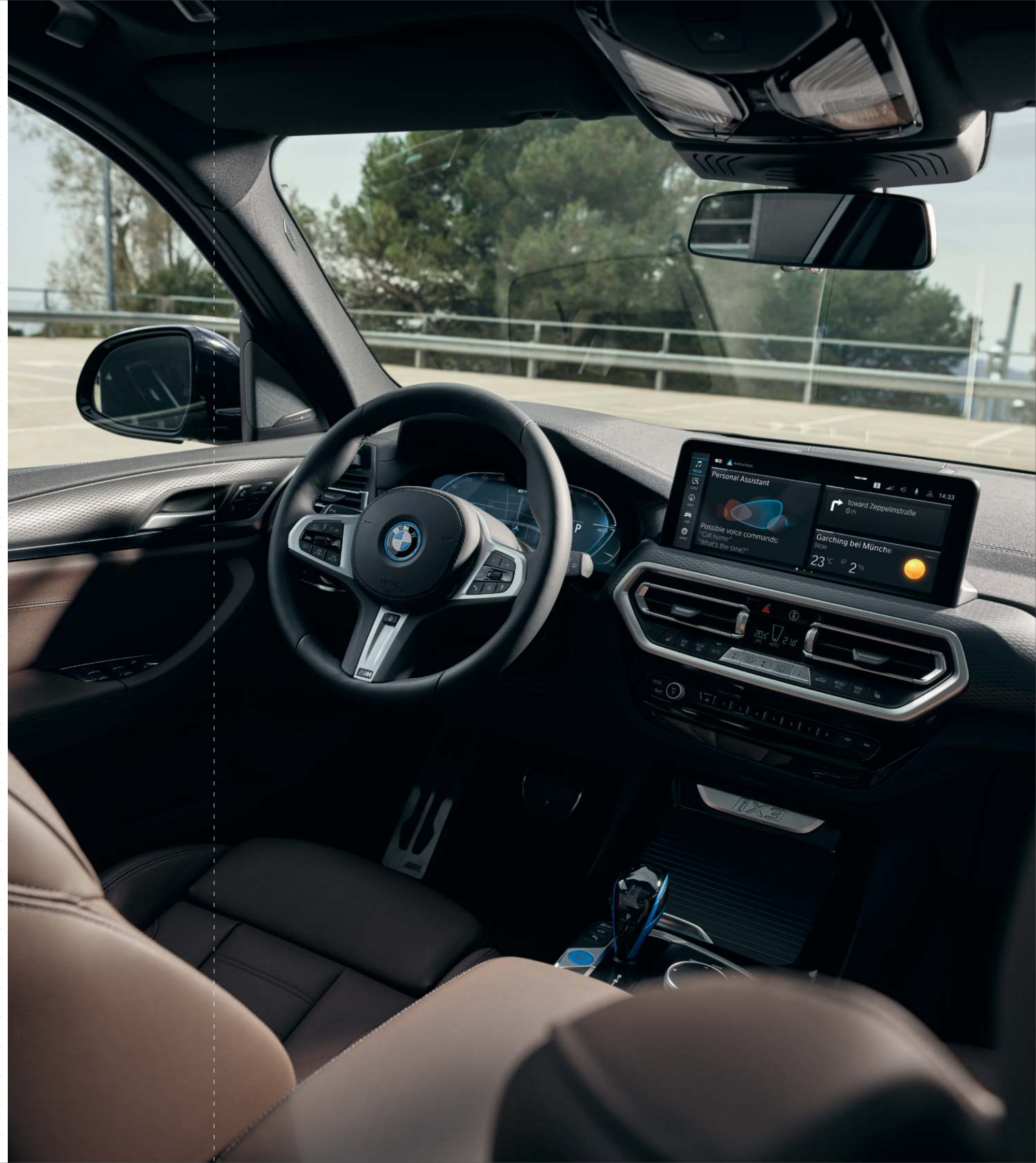
WELCOME TO THE CENTRE STAGE.

Take a seat – and discover how exciting an interior can be: from sporty to modern to absolutely luxurious, you will find everything here to make a driving experience extraordinary. Large, uncluttered decors, clearly structured control islands and maximum seating comfort – in the new BMW iX3, every journey is an experience you will remember for a long time.

■ At the centre of the action: the high-resolution 12.3" control display shows all information in a clear and easy-to-read manner. Together with BMW i-specific displays in the instrument cluster, such as the charge level, you always know you are at the centre of the action.

■ Design highlights such as blue accents in the sport leather steering wheel, detailing on the gear selector lever, the BMW iX3 badge in the centre console or the blue Start/Stop button spread a modern, luxurious ambience that fascinates at first glance.

□ Dynamic comfort – the sport seats in **'Vernasca' leather with decorative stitching** not only look breathtakingly athletic, but also provide perfect support in every curve thanks to the comprehensive range of adjustments.



IMPRESSIVE PACKAGE.



■ The individually adjustable Sport seats for the driver and front passenger feature numerous manual adjustment options, including fore-and-aft position, and the backrest and seat angle. Addition for the driver: backrest width adjustment. Thanks to larger seat and backrest bolsters, and well-defined side bolsters, they provide excellent ergonomics and a high degree of lateral support.



■ With BMW Gesture Control, certain functions can be operated by means of defined hand movements. For certain operations the system will for example recognise gestures such as 'swiping' or 'pointing' for accepting or rejecting an incoming call, or circular motions of the index finger to adjust volume.



■ Harman Kardon surround sound system with 464 watt digital amplifier, vehicle-specific equalising and loudspeakers with chrome detailing.



■ 20" M aerodynamic wheels 890 M Bicolour Jet Black with mixed tyres, gloss-lathed, wheel size front 8J x 20 with 245/45 R20 tyres, wheel size rear 9.5J x 20 with 275/40 R20 tyres.

■ The full-colour BMW Head-up display¹ projects information relevant to the journey directly into your field of vision, thereby allowing you to fully concentrate on driving. Information such as the current speed, navigation directions, Speed Limit Info, along with telephone and entertainment lists are displayed on an equipment-specific basis.

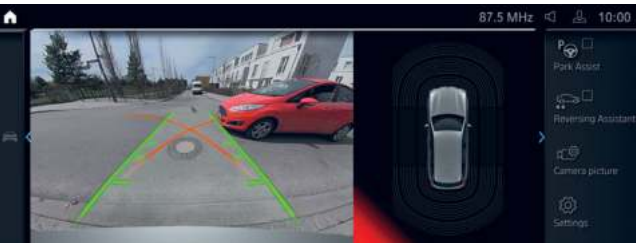


"IMPRESSIVE" MODEL ADDITIONAL EXTERIOR EQUIPMENT FEATURES COMPARED TO THE "INSPIRING" MODEL:

- 20" M aerodynamic wheels 890 M Bicolour with mixed tyres
- Comfort Access

"IMPRESSIVE" MODEL ADDITIONAL INTERIOR EQUIPMENT FEATURES COMPARED TO THE "INSPIRING" MODEL:

- Sport seats for driver and front passenger in leather 'Vernasca' Black with decorative stitching; other upholstery available
- Lumbar support for driver
- BMW Head-Up Display
- BMW Gesture Control
- Parking Assistant Plus
- Harman Kardon surround sound system
- BMW IconicSounds Electric
- Acoustic glazing



■ The Parking Assistant Plus² makes parking and manoeuvring the vehicle easier. It features among others the Surround View system including Top View, Panorama View, Remote 3D View, as well as a lateral parking aid, the emergency braking function Active Park Distance Control, Parking Assistant with longitudinal and lateral guidance and Reversing Assistant. Content shown will depend on the trims chosen.

¹ The information in the BMW Head-Up Display is not fully visible when viewed through polarised sunglasses. Content shown will depend on the equipment options chosen. Further optional equipment is required to display specific items.

² Function may be limited in darkness, fog or bright glare.

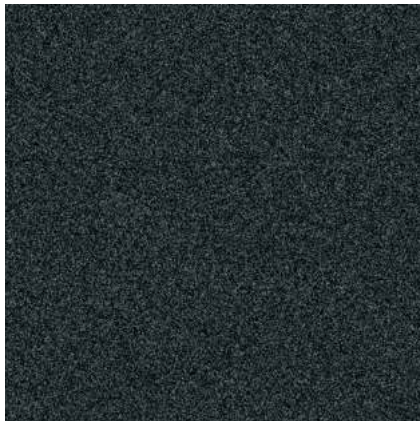
The availability of some equipment features, functions and digital services depends on engine versions or additional optional equipment. The offer structure as well as market and production availability may vary. For detailed information about availabilities, duration and costs, contact your local BMW authorised workshop.



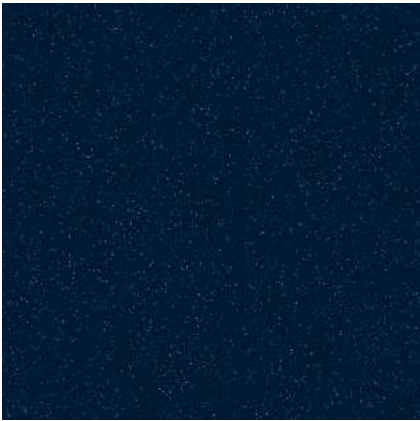
EXTERIOR COLOUR WORLD.



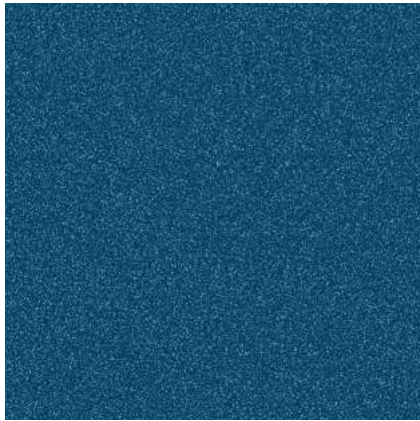
■ Metallic A96 Mineral White



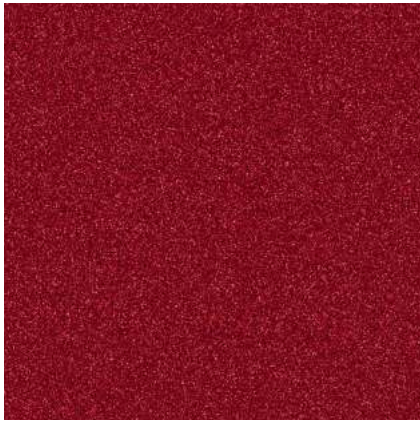
■ Metallic A90 Sophisto Grey Brilliant Effect



■ Metallic 416 M Carbon Black



■ Metallic C1M Phytomic Blue



■ Metallic C3C Piemont Red

WHEELS AND TYRES.



■ 20" M aerodynamic wheels 890 M Bicolour Jet Black with mixed tyres, gloss-lathed, wheel size front 8J x 20 with 245/45 R20 tyres, wheel size rear 9.5J x 20 with 275/40 R20 tyres.



■ 19" aerodynamic wheels, Bicolour 8J x 19 with 245/50 R19 tyres

[Colour samples] These colour samples are intended as an initial guide to the colours and materials available for your BMW. However, experience has shown that printed versions of paint, upholstery and interior trim colours cannot in all cases faithfully reproduce the appearance of the original colour. Please discuss your preferred colour choices with your BMW partner or in your dealership. There you can also see original samples and be assisted with special requests.

The availability of some equipment features, functions and digital services depends on engine versions or additional optional equipment. The offer structure as well as market and production availability may vary. For detailed information about availabilities, duration and costs, contact your local BMW authorised workshop.

INTERIOR COLOURS.

UPHOLSTERY COLOURS



□ Leather 'Vernasca' MAMU Mocha with decorative stitching, interior colour Black



□ Leather 'Vernasca' MANL Black, contrast stitching Blue, interior colour Black

INTERIOR TRIM FINISHERS



□ M interior trim finishers Aluminium Rhombicle dark with highlight trim finisher Pearl Chrome

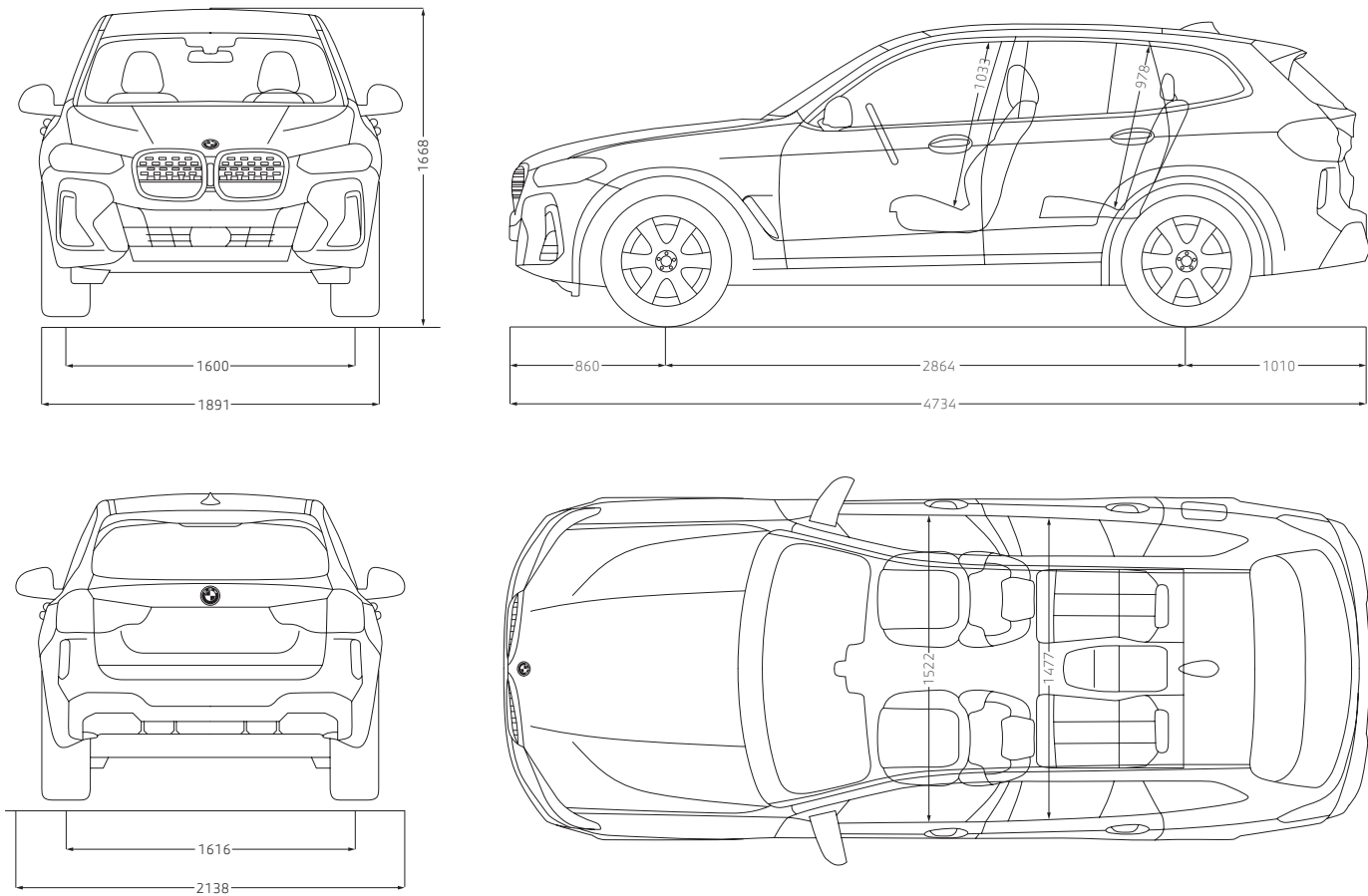


□ Interior trim finishers black high-gloss with highlight trim finisher Pearl Chrome

TECHNICAL VALUES.

		iX3 M Sport (Inspiring)	iX3 M Sport (Pro)
Engine and Performance			
Electric motor		BMW eDrive technology	BMW eDrive technology
Electrical range ¹ , NEDC	km	470	470
Electrical range ¹ , WLTP	km	up to ¹ 460	up to ¹ 460
Battery type	High voltage	Lithium-ion	Lithium-ion
High voltage battery energy content	kWh	80	80
Top speed	km/h	180	180
0-100 km/h	s	6.8	6.8
Electric energy consumption, NEDC	kWh/100 km	20.2	20.2
Electric energy consumption, WLTP	kWh/100 km	19.5 – 18.5	19.5 – 18.5
Power transmission			
Type of drive		Rear-wheel	Rear-wheel
Standard transmission		Automatic	Automatic
Power and torque			
Maximum output	kW/hp	210/286	210/286
Maximum torque	Nm	400	400
Dimension			
Length/width/ height	mm	4734/1891/1668	4734/1891/1668
Curb weight	kg	2260	2260
Luggage capacity	l	510-1560	510-1560
Wheels/tyres			
Wheels		19" aerodynamic wheels, Bicolour	20" M aerodynamic wheels, Bicolour
Tyre size		8 J × 19 / tyres 245/50 R 19	front: 8 J × 20 / tyres 245/45 R20 rear: 9.5 J × 20 / tyres 275/40 R20

TECHNICAL VALUES.



The dimensions in the technical drawing are in millimetres and may vary depending on the model and optional equipment.

¹ Range dependent on various factors. In particular: personal driving style, route characteristics, exterior temperature, heating / air conditioning, pre-conditioning.
BMW reserves the right to change all information, specifications and illustrations without prior notice and is not responsible for typographical errors.

*Actual product may vary and product specifications may differ from country to country. BMW reserves the right to change all information, specifications and illustrations without prior notice. BMW AG, Munich, Germany and BMW Thailand reserve the right to make changes at any time, without notice, in colors, material, equipment, specifications and models, and is not responsible for typographical errors. Such changes may affect vehicle pricing and vehicle content.